

# EMERGENCY RESPONSE PLAN

---

## SEELEY OIL COMPANY



July 20, 2021



PREPARED FOR

Seeley Oil Company

P.O. Box 1058

Cortez, CO 81321

(970) 565-2136

PREPARED BY

ECOPPOINT, INC

225 Hutton Ave.

Rifle, CO 81650

208-596-8194



## Contents

1. Purpose and Scope	1
2. Local Emergency Response Organizations	2
3. Operator Contacts	3
4. Health and Safety Action Level Determination	5
5. Training and Exercise	18
6. Plan Approval Finalized	19
7. Spargo 1-36 COGCC ID: 322109	20
8. Spargo 2 COGCC ID: 322111	22
9. Southeast Spargo COGCC ID: 322118	24
10. Island Butte A COGCC ID: 322115	26
11. Island Butte 3 COGCC ID: 322116	28
12. Island Butte 1 COGCC ID: 381605	30
13. Canyon 1 COGCC ID: 322117	32
14. Island Butte 7-AH COGCC ID: 313561	34
15. Island Butte 5 COGCC ID: 313557	36
16. Island Butte 12 COGCC ID: 313571	38
17. Island Butte B	40
18. Island Butte 8 COGCC ID: 313558	42
19. Cutthroat 9 COGCC ID: 313563	44
20. Cutthroat 4 COGCC ID: 313539	46
21. Cutthroat A COGCC ID: 313527	48
22. McClean 2 COGCC ID: 313455	50
23. Cutthroat 3 COGCC ID: 313536	52
24. Cutthroat B COGCC: 313548	54
25. Cutthroat 8 COGCC ID: 313553	56
26. Cutthroat 12 COGCC ID: 313578	58
27. Cutthroat 14 COGCC ID: 313581	60
Appendix A-Route Maps	62
Appendix B- Facility Maps	66



## 1. Purpose and Scope

This Emergency Response Plan (ERP) has been prepared by EcoPoint, Inc. to address activities at the Seeley Oil Co. (the Company) operations. The ERP is applicable to emergencies that may occur at any site operated by the Company and is intended for use by all Company personnel, contractors, consultants, and sub-contractors.

This plan is intended to minimize the potential for injury, loss of life and/or property, and to define the responsibilities of company personnel during emergency situations. In the event of an emergency, it is necessary to establish immediate coordination with local responders, operational, and corporate staff. A contingency plan shall be implemented, as needed, to meet local responders' requirements and response capabilities.

Emergency procedures will be updated as needed for all potential incidents, including wildfire, structural fire, explosion, toxic gas leaks, acid or caustic spills into primary water sources, weather disturbances and civil unrest. Procedures will include details on communications, firefighting, medical, security, evacuation, resumption of operations or others as required by the situation and as directed by site supervision.

In accordance with COGCC Rule 602.j.a. this ERP will be kept in at the workplace and readily available to all employees. All personnel will be trained on this policy when the policy is implemented, at the time of hire, and any time changes are made thereafter.



## 2. Local Emergency Response Organizations

Local emergency response organizations will be used for emergencies requiring specialized training and resources of those organizations. Seeley locations covered in this response plan span two counties and each location may have different responding organizations respective to the county they are in. Site specific contact information is provided in sections 7-27 for each individual location.

Company employees shall act to provide aid and resources, including information and technical assistance, to local response organizations as necessary but shall not be responsible for emergency response activities at a technical level. Employees will allow access to the property for all personnel and equipment required for emergency response, such as fire equipment, law enforcement vehicles, ambulances, and life-flight helicopters. Depending on the scope and severity of the emergency, any of these organizations, other than the hospital, could provide an Incident Commander who is responsible for managing the emergency.

### Local Emergency Coordinating Agencies

#### **Montezuma County Office of Emergency Management**

109 West Main, Suite 115  
Cortez, CO 81321  
(970) 564-4137 (Emergency Manager Jim Spratlen)

#### **Dolores County Office of Emergency Management**

8477 Road 7.7  
Dove Creek, CO 81324  
(970) 769-0005 (Keith Keesling, Emergency Manager)

### Local Fire Departments

#### **Pleasant View Fire Department**

P.O. Box 291  
Pleasant View, CO 81331  
(970) 739-6060 (Fire Chief Angela Rohwer)

#### **Dove Creek Volunteer Fire Department**

102 Main St.  
Dove Creek, CO 81324  
(970) 529-6679 (Fire Chief Jake Kline)

### Local Hospital

#### **Southwest Memorial Hospital**

1311 N Mildred Rd  
Cortez, CO 81321  
(970) 565-6666

### Local Law Enforcement

#### **Montezuma County Sheriff**

730 E Driscoll St  
Cortez, CO 81321  
(970) 565-8452

#### **Dolores County Sheriff**

409 Main St.  
Dove Creek, CO 81324  
(970) 677-2257

### Life-Flight Provider

#### **Mercy Regional Medical Center- Lifeguard 5**

1010 Three Springs Blvd.  
Durango, Colorado 81301  
(970) 247-4311

### EMS Providers

#### **Southwest Health System**

1311 N Mildred Rd.  
Cortez, CO 81321  
(970) 565-6666

#### **Dove Creek Ambulance**

102 Main St.  
Dove Creek, CO 81324  
(970) 560-1053 (EMS Chief Grant Allen)



### 3. Operator Contacts

Emergency contact number where the operator can be contacted as required by Rule 605.a.(3). and contact numbers for Operator staff that may respond or assist in response.

#### 3.1. Project Coordinator Duties and Contact:

Nathaniel Seeley

Cell: (970) 560-2780

Home: (970) 565-7138

- Serve as the primary spokesperson for the Company during a response to an emergency involving hazardous materials or events that could potentially affect the public.
- Provide interface between Company and the media.
- Delegate or transfer roles or responsibilities to appropriate personnel, as necessary.
- Notify management, the United States Environmental Protection Agency (EPA) when necessary, COGCC when necessary, and the Supervising Contractor and/or other outside agency contacts of emergency conditions and status, as required.

#### 3.2. Site Manager, Lead Operator Duties and Contact

Todd Henderson

Cell: (970) 749-0512

Home (970) 565-8226

- Provide program management, technical oversight, and expertise in field activities and assign employees roles and responsibilities.
- Review response plans, incident reports, post emergency critiques, and lessons learned.
- Ensure all employees possess the proper and adequate training to perform emergency response actions during a hazmat, fire, medical, or other type of emergency.
- Perform duties associated with the normal operations.
- Isolate the response area as directed by the guidance of this document, or per the Project Coordinator, Site Manager, or Site Safety Officer.
- Make notifications to appropriate managers/supervisors as well as the applicable emergency response organizations.
- Recognize the nature of the hazard.
- Call for evacuation or shelter-in-place, as required and if the Site Safety Officer has not arrived on site.
- If prevailing winds preclude the use of a decontamination facility in the assembly area, designate an alternative meeting place for all on-site workers, contractors, and consultants in the event of an emergency.
- Perform spill response with equipment and/or spill response kits as designated and trained to do so and in accordance with Spill Prevention Control and Countermeasure ( SPCC) Plan.
- If trained to do so, extinguish incipient stage fires using appropriate portable fire extinguishers and initiate emergency fire assistance with local fire services.



- Coordinate and ensure that facilities have been properly and thoroughly evacuated in the event of a fire or emergency.  
Ensure all personnel are properly trained on the policies contained herein.
- Ensure adequate resources are made available to personnel during an emergency or, more importantly, to prevent incidents from occurring.
- Act as the Incident Commander until a Company Corporate, Public Agency, or Private Sector Incident Commander with greater incident command experience arrives at the scene to relieve him/her of this responsibility.
- Designate primary and alternate supervisors responsible for coordination of the accounting process at all muster points once evacuation has been achieved.

### 3.3. Site Safety Officer Duties and Contact

Mike Shultz

Cell: (970) 560-5225

Home: (970) 677-2499

- Provide oversight for emergency planning.
- Serve as on-scene coordinator during the emergency.
- Direct emergency response actions using appropriate personnel and resources to control or minimize the emergency.
- Authorize site-wide evacuations of personnel or call for shelter-in-place.
- Declare an emergency.
- Delegate personnel for positions of emergency response, including operations, emergency response coordination, and public relations.
- Verify personnel accountability list.
- Maintain succession of authority during the emergency.
- Protect the health and safety of the public and site personnel.
- Conduct a post-emergency assessment as soon as practicable following stabilization of the emergency condition.
- Assist with emergency response actions.
- Assist emergency response/medical personnel in making notifications as requested.
- Keep emergency response/medical personnel apprised of emergency status.
- Provide a current inventory of chemicals and hazardous substances, materials, or wastes present on site and identify storage locations to off-site response organizations.
- Ensure emergency response communications systems are available and operational and conduct annual tests of those systems.
- Assist in preparing records of emergency response events, including incident investigation reports, for noteworthy practices and emergency response improvements.
- Ensure responders meet the requirements for medical surveys prior to and after exclusion zone entries.
- Establish a worker, contractor, and consultant sign-in or tag-in system to account for all on-site workers, contractors, or consultants in the event of an emergency.

## 4. Health and Safety Action Level Determination

For this plan, an emergency is *any condition which requires assistance over and above that which can be supplied by the normal personnel present at the time, or which cannot be handled in a routine manner.*

All emergency situations are unique and present various conditions. Always evaluate the situation before deciding on a course of action. Site personnel must not “rush in” until the following has been considered:

- Is there an immediate threat to life from fire, explosion, structure collapse, chemical spill, or release? If so, sound the alarm and evacuate.
- Is there an immediate potential for release of toxic (poisonous) chemicals or fumes in the air? If so, evacuate uphill and upwind of the release.
- Is there an immediate potential for uncontrollable energy release (pressure), electrical shock, chemical spill, fuel to “feed” a fire? If so, de-energize equipment, disconnect power, engage emergency shut off valves to pumps and fuel sources; but only do so if the action will not cause a more serious problem or endanger someone.
- Eliminate sources of ignition by shutting down all other powered equipment, including vehicles, pumps, construction equipment, welding equipment, combustors, separator burners, auxiliary generators, power tools, etc. that may be on site at the time.
- When in doubt, sound the alarm, evacuate, and call for help.

### 4.1. Actions Common to All Emergencies

Emergency Response actions should account for life safety first, the environment second, and lastly, property. The steps below should be considered during any emergency:

- Survey the scene for personal safety. If the area is deemed unsafe, re-locate.
- Warn others in the area using whatever means are available (e.g., voice, telephone, radio, portable sirens, car horn).
- Implement chain of command notification for an organized response.
- Survey the scene and determine resources needed by emergency personnel.
- Stop or secure the operation causing the emergency, but only if safe to do so.
- Minimize exposure to potentially hazardous conditions as part of the emergency.
- Identify other hazards present (e.g., the potential for fire or explosion.)
- Isolate the area and establish control boundaries, if possible.
- Contact and direct emergency response organizations to the scene as necessary.
- At no time should an emergency response be performed if the Site Safety Officer determines the area is unsafe for personnel to enter.

Good communication is essential for effective emergency responses. The simple warning system described in Table 1 will be used to notify personnel of an emergency. This warning system shall be tested at least annually by the Site Safety Officer.

Upon notification of an emergency, the Site Safety Officer will notify the Project Coordinator. Notifications to agencies and organizations will be determined by the Project Coordinator. Supplemental

actions will be determined by the on-site Site Safety Officer and carried out as quickly possible after immediate actions are addressed.

All company employees must be able to identify hazards in the immediate area and be aware of alarm notification procedures. Table 1 below describes the alarm method using a handheld air horn. DO NOT use vehicle horns if potential for ignition exists. Company personnel should be trained to recognize these alarms.

*Table 1 Warning Alarms and Actions*

Action	Warning Signal
Attention (Emergency Event)	<ol style="list-style-type: none"><li>1. Continuously blast the horn for 5 seconds. Repeat three times with a 5-second pause in between.</li><li>2. Supervisor must then radio employees to communicate further instructions to all personnel</li></ol>
Evacuation	<ol style="list-style-type: none"><li>1.1.1. Make five 10-second blasts with horn, with 5-second pauses in between each blast. Repeat two times.</li><li>1.1.2. Immediately evacuate to the designated assembly area for personnel accountability.</li></ol>
Shelter in Place	<ol style="list-style-type: none"><li>1. Continuously blast the horn for thirty seconds. Repeat one time if necessary, with a 5-second pause in between.</li><li>2. Immediately proceed to shelter-in-place and proceed with emergency preparations as indicated herein.</li></ol>

#### 4.1.2. Media Responses

No personnel will talk to any media representative without prior approval. All comments will be referred to the company media representative. Employees shall state “no comment” to any media questions posed to them.

### 4.2. Information for Specific Emergencies

#### 4.2.1. Bomb or Terrorist Threats

If a bomb threat is received, stay calm. It is important to keep the caller on the line to obtain as much information as possible. Someone other than the call recipient should notify the Project Coordinator or Site Manager of the threat while the caller is still on the line. A bomb threat may be followed by a site evacuation depending on information obtained from the caller.

#### 4.2.2. Explosions

- If flammable natural gases or liquids are released, the following action should be taken immediately:
- Evacuate all personnel from the area.
- Shut down all running equipment.
- Close all valves upstream and downstream of the leak.
- Call 911.

- Contact appropriate company personnel and implement a notification chain of command.
- Follow instructions in the “Fire” section in case of a fire.
- If personnel are injured, apply first aid as trained to do so and transport them to the nearest medical facility, if possible. Otherwise, wait for emergency responders to arrive.

#### 4.2.3. Evacuations

Depending on the emergency, personnel shall evacuate to a location upwind and uphill, if possible. Personnel shall meet at the designated safe area and a head count will be taken by the supervisor or designee to ensure that everyone is accounted for.

A call for an evacuation may be restricted to a specific work area or executed for the entire site. Area evacuations can be ordered by any Company employee, contractor, subcontractor, or others during an emergency. A site-wide evacuation may be authorized by the Project Coordinator, Site Manager, and/or Site Safety Officer.

All buildings, truck bays, and tank farms must be evacuated if the fire alarm sounds or if authorized personnel orders an evacuation. Never ignore an emergency alarm.

Evacuation beyond muster points may be required. The Site Safety Officer will direct evacuation beyond muster areas to an area of safe refuge.

When instructed to evacuate, proceed with the following:

- Implement emergency shut-down procedures by activating the emergency shut-off valves on all equipment.
- Identify the direction of the wind by observing the direction of the wind sock and evacuate immediately cross or upwind of the affected area to the designated assembly area or muster point.
- Follow the primary exit route. If the designated route or assembly point is not accessible or safe due to wind direction, proceed to a secondary or alternate assembly area as designated herein or by the Site Safety Officer.
- If the primary exit is blocked or unable to be reached, choose a secondary evacuation route.
- All radio traffic should cease except for those authorized to broadcast emergency information on the main radio channel. A radio channel may be designated for supervisors to communicate with an emergency coordinator or a Company representative.
- Assist injured persons evacuating the site as needed and if able and trained to do so. **DO NOT CAUSE MORE HARM AND DO NOT BECOME ANOTHER VICTIM BY RUSHING INTO A HAZARDOUS ENVIRONMENT.**
- All engine-driven equipment should be shut down and engines turned off. Keys should be left in the ignition.
- Vehicles should be parked and clear of traffic lanes and access routes. Emergency vehicles and personnel must have clear access to the location.
- Move to the predetermined muster point away from the incident.
- If individuals are ignoring the alarm, warn them to evacuate immediately. Do not get involved in an altercation but notify the supervisor immediately of the location of these employees.
- Do not reenter the work area until directed to do so by authorized personnel or after the “All Clear” signal has been given by the Site Supervisor.

#### 4.2.3.1. Assembly Areas/Muster Point/Decontamination Areas

Muster areas are designated safe refuge zones during a site emergency, and can be found for each site in Appendix B-Facility Maps. If prevailing winds put either the primary or secondary muster point downwind of the accident site, workers will be directed via radio or cell phone to an alternative area. All personnel must be aware of the primary and secondary muster points, even if they are NOT marked. Muster areas will also serve as decontamination areas should any personnel be impacted by hazardous materials.

#### 4.2.3.2. Evacuation Routes

Evacuation routes will be clearly communicated to all personnel by postings or radio directives as mandated by changing conditions. Evacuation routes can be found in Appendix A-Route Maps. If conditions warrant, evacuation routes shall be revised to account for upwind possibilities that are safer than traveling along the access road during certain emergency situations. The Site Safety Supervisor will determine if a change in the primary evacuation route is mandated.

- Evacuation routes shall be upwind of any hot zone or exclusion zone and windsocks shall be visible to all site personnel to determine which exit route to take during evacuation.
- If the primary evacuation route is unusable, workers shall be directed via radio or cell phone to an alternate route.

The Project Coordinator or Site Manager will ensure evacuation routes are rehearsed as a part of regularly conducted site emergency drills.

#### 4.2.3.3. Personnel Accountability

The Site Safety Officer shall use an accountability list to account for all personnel. The accountability list shall be based on the Site's daily sign-in/sign-out log or sheet. A count of all personnel shall be done at the muster point. The names of missing and/or unaccounted for personnel must be delivered to the Project Coordinator as soon as possible.

***CAUTION: Searches for missing personnel shall be conducted only if possible to do so safely. No personnel shall conduct a search in dangerous conditions.***

#### 4.2.4. Fire

The objective is to take actions that might reduce the consequences of a fire in the event one occurs. When a fire alarm sounds, leave immediately. Instruct all employees to leave the area immediately as you evacuate and notify the supervisor. Be aware of individuals who may need assistance. Do not reenter the site until directed to do so by authorized personnel.

##### 4.2.4.1. Extinguishable Fire (Incipient Stage)

- Report the fire by activating the nearest fire alarm.
- Use a fire extinguisher in your area to extinguish the fire, if trained to do so.
- Use the **PASS** system:
  - a. **P**ull the safety pin.
  - b. **A**im – Remove the hose and aim the nozzle toward the fire.

- c. Squeeze – Holding the handle, squeeze the trigger.
- d. Sweep – Extinguish the fire in a sweeping motion, from left to right.
- Immediately report the incident to the supervisor.
- Rule of thumb: If you have already discharged one 20-30 pound fire extinguisher at the base of a fire and have made no impact on the fire, then it is beyond the incipient stage and steps in section 4.b.iv.2 below must then be followed.

#### 4.2.4.2. Non-Extinguishable Fire

- Report the fire by activating the nearest fire alarm and contacting the supervisor on duty.
- Call 911 and give all needed information, referencing the emergency numbers listed herein.
- Conduct an emergency shut down and evacuate the area.

If a potential wildfire breaks out, the most important thing is accountability. First notify someone of the fire. Second, call the Montezuma or Dolores County 911 Dispatch immediately. The sooner 911 is dispatched, the quicker the response time. All fires on federal lands require immediate notification to applicable company personnel. If the fire cannot be put out by the fire extinguisher in the incipient stage, it is time to evacuate the area immediately.

#### 4.2.5. Flood

Floods are unlikely to affect operations at company operations. Flood conditions will most likely occur from runoff associated with thunderstorms, heavy rain, snow melting, or broken pipelines. It could also occur if any pipelines or on-site tanks break. The actions taken in the event of a flood will depend upon the amount of warning received before a flood occurs. Flooding associated with thunderstorms can result in rapid increase in flow in drainages and flow into the pond. Stay away and out of that area. In the event of such conditions, notify the Site Safety Officer. Flooded roadways may be encountered while traveling to or from the jobsite. Drive with care and never attempt to drive through flooded road sections.

#### 4.2.6. Earthquake

The likelihood of an earthquake at or near Western Colorado is highly unlikely. This information is provided for awareness only. Be prepared for additional aftershocks. They are usually smaller but can cause additional damage or bring weakened structures down. Do not attempt to move seriously injured persons unless they are in immediate danger of further injury. Report the location of the injured person to emergency personnel.

##### 4.2.6.1. Indoors

- Stay inside. Falling debris can cause serious injury outside.
- Take cover under a sturdy desk, table, or other furniture, in a supported doorway, or along an inside wall.
- Stay as far away from glass and windows as possible.
- Extinguish open flames and do not use lighters, matches, or candles, due to possible gas leaks.
- After tremors have ceased, leave the building until structural safety can be assessed. Do not enter any building until structural integrity can be verified.



#### 4.2.6.2. Outdoors

Move away from buildings and utility wires. Once in the open, stay there until the tremors have stopped.

#### 4.2.6.3. Moving Vehicle

- Stop as quickly as safety permits. Remain in the vehicle.
- When tremors stop, drive carefully, and watch for falling objects, downed electrical lines, and broken or undermined roadways.

#### 4.2.7. Severe Storms

Colorado weather at all times of the year can be unpredictable. To prepare for contradictory conditions, personnel shall monitor news and weather reports for forecasts. Supervisors should be warned of threatening conditions.

Company will keep supervisors informed of the changing conditions and the effects of weather on operations. Supervisors will subsequently inform all employees. Supervisors will look at the difference in the drive time to and from the work site due to severe weather and adjust accordingly, if necessary. Supervisors will also review the appropriate PPE for the weather condition and inform all employees of any necessary changes.

##### 4.2.7.1. Tornado or Severe Lightning

- If a tornado or severe lightning is seen, sound the alarm and evacuate.
- Seek shelter away from the pond, trailers, and vehicles.
- Get low to the ground, away from trees, preferably in a ditch or depression if no likelihood of flash flooding exists in the area.
- If time allows, notify others of your location and situation.
- Do not attempt to outrun severe weather or flash floods.
- Do not park beneath trees and avoid exposed areas such as ridgelines and natural washes.
- Seek shelter if available, otherwise stay in a vehicle.
- If caught out of your vehicle, proceed downhill to a less exposed side slope location. Avoid trees, fences, large rocks. Squat in the open on the balls of our feet with your head down. Cover ears with hands, elbows in, and wait the situation out.
- Never attempt to walk or drive across flooded roads or ditches.

##### 4.2.7.2. Blizzard

- Tune into and monitor local weather radio or news broadcasts.
- When a blizzard warning has been issued, immediately notify office and field personnel that may be affected.
- Inform others to tune into weather broadcasts and stay abreast of possible conditions and/or weather changes in their area.
- Inform personnel if a blizzard is underway.
- If stranded in blizzard conditions, notify others of deteriorating conditions along with your locations and situations before communications are lost.

- **DO NOT** leave your vehicle unless necessary. Assure exhaust pipe is clear of obstructions (such as snow buildup) and run engine only when needed, so fuel is conserved.
- If stranded away from a vehicle or if necessary, to abandon it, seek shelter in a stable structure and wait for help to arrive. If shelter is not available, build a snow cave and wait for help. If caught outside of shelter, build a fire if possible.
- Try and stay dry. Change to dry and weather resistant gear.
- If caught with more than one person in a blizzard, **DO NOT SEPARATE**. Aid others if you are capable.

#### 4.2.8. Power Failure

If there is a power failure, proceed with the following steps:

- Switch off all equipment being used to prevent injury when power returns.
- Ensure all other equipment or switches are turned off to prevent possible damage to equipment from power surges when power is restored.
- Notify the supervisor in charge of your actions due to the power failure.

After the power has been restored, check your area, and report any equipment or other damage to your supervisor. Verify that all electronics are up and running and report any discrepancies.

#### 4.2.9. Material or Chemical Release and/or Spills

Actions in the event of a spill of petroleum products or toxic materials, including condensate and process water, will be provided in the company's SPCC Plan.

Notify all employees and other appropriate personnel of the spill and any chemicals involved. All employees will comply with the company's personal protective equipment policy for any chemicals they are using or to which they may be exposed at the site in the event of a spill.

#### 4.2.10. Medical Emergencies

While all employees are responsible for immediate action in response to a medical emergency, no employee is required to provide first aid for which he or she has not been trained or if uneasy about doing so. Occasionally accidents will happen where individuals, including the victim, will assume that no injury has occurred, and that no medical attention is required. If symptoms become evident later, an Incident Report needs to be filled out and turned into the supervisor on duty. The injury incident will then be investigated and analyzed for root causes to mitigate or eliminate hazards that led to the incident.

Different procedures for varying degrees of medical emergencies shall be utilized by site personnel when responding to a medical emergency.

##### 4.2.10.1. Life Threatening

EXAMPLES: Unconsciousness, inability to move, potential spinal injuries, seriously broken bones, uncontrollable bleeding, heart attack, stroke, inability to breath, etc.

- Do not move the victim unless he or she is in a life-threatening situation or environment. Render first aid applicable to your training and abilities.

- Call for emergency help and reference the emergency phone numbers listed herein. If necessary, send someone to meet emergency personnel and bring them to the victim's location.
- Notify supervisor immediately and report the following:
  - Name of victim.
  - Date and time of injury.
  - Description and/or circumstances of the injury.
  - Summary of what happened and include actions taken as a result.
  - Names of witnesses.
  - Conditions of the site or location of injury.
  - Need for Incident Report Form.

#### 4.2.10.2. Non-Life Threatening

EXAMPLES: cuts, abrasions, sprains, fainting, simple fractures, etc.)

- Immediately contact medical services by referencing emergency phone numbers. Render first aid applicable to your training and abilities.
- Notify the supervisor of the injury and report the following:
  - Name of victim
  - Date and time of injury.
  - Description and/or circumstances of the injury.
  - Summary of what happened and include actions taken as a result.
  - Names of witnesses
  - Conditions of the site or location of injury.
  - Need for Incident Report Form.

#### 4.2.10.3. General

Basic guidelines for medical emergencies:

- Make sure it is safe to be in the victim's area;
- Call 911 and request an ambulance. Provide the following information:
  - Number and location of victim(s);
  - Nature of injury or illness;
  - Hazards involved; and,
  - Nearest entrance (emergency access point.)
- Alert trained employees to respond to the victim's location and bring a first aid kit and/or AED.
- Notify the Site Supervisor or Site Manager.
- Only trained responders/personnel shall provide first aid and assistance.
- Never move a victim in need of medical assistance unless:
  - Directed by a competent medical authority.
  - The injury will not be aggravated or complicated by a move.
  - Greater physical harm to the victim likely if not moved from current location.
  - Wound severity is life-threatening.
- Take "universal precautions" to prevent contact with bodily fluids and exposure to bloodborne pathogens.

- Meet the ambulance at the nearest entrance or emergency access point and direct them to the victim(s).

Never delay EMS access to the scene while applying administrative controls or prescribing personal protective equipment. Decontamination of victims, EMS personnel, and any associated equipment and materials will be performed in proportion to the nature and severity of the medical emergency.

#### 4.2.11. Public Disturbance Actions

A public disturbance is defined as a demonstration by activists or a threat to operations at Seeley operations. Public disturbances can take the form of events that may serve to:

- Disrupt Company, contractor, or subcontractor operations.
- Adversely affect Company or contractor properties.
- Jeopardize the safety and health of Company, contractor, or subcontractor employees.
- Adversely affect the reputation or public image of the Company.
- Threaten or cause bodily injury or hazardous material exposure to the general public.

If there is no immediate threat to personal safety, the Project Coordinator or Site Manager will work with the corporate and off-site emergency response organization(s) to determine the appropriate response actions needed to safeguard personnel and property during a public disturbance, as they often occur with little or no warning.

#### 4.2.12. Transportation or Vehicle Incidents

A vehicle collision is defined as any vehicle contact or damage requiring repairs to a Company vehicle, another vehicle, and injury to a pedestrian, animal, or third-party, or damage to Company property.

##### 4.2.12.1. Vehicle Accident

- **STOP. NEVER LEAVE THE SCENE OF AN ACCIDENT.**
- Obtain help for injured persons.
- Notify police and a Company supervisor.
- Obtain necessary information at the scene. Exchange only driver's license number and insurance information with other driver. **DO NOT** make commitments. State the collision will be reported to your company. Any liability will be determined by the company and its insurance carrier. **DO NOT** express opinions or become involved in arguments.
- Have witnesses provide address and telephone numbers.
- If injury results from a vehicle accident, an injury report must be completed.

##### 4.2.12.2. Transportation Incident

A transportation incident is an emergency event involving vehicle/truck transport of operation materials (such as sludge, acids, bases, or polymers) being delivered to, or shipped from, Seeley operations.

- If an injury requiring immediate medical attention occurs, or if there is a potential for impact to the environment that cannot be contained with a small spill kit or hand tools, the incident will be handled by off-site response organizations.
- The carrier used for transportation incidents shall be included in all accident investigations involving their transport vehicles.

- Conveyance or transportation employee /staff shall be trained to minimize the contamination of property by inspecting shipping equipment for any leaking material, signs of damage or excess wear prior to its use.
- Conveyance or transportation employee/staff shall be trained to respond to an emergency without endangering personal safety.
- Shipping personnel will immediately notify the Site Manager or Site Safety Officer and/or the off-site emergency response organizations of the potentially hazardous emergency and the possible threat to the public's health and safety, the potential impact to the environment, and any possible or impending damage to property.
- The Project Coordinator, Site Manager, Site Safety Officer, or the conveyance company will coordinate contractor emergency response cleanup support as needed.

#### 4.2.13. Shelter in Place

If chemical, biological, or radiological contaminants are released into the environment in such quantity and/or proximity to the site, it may be safer to remain indoors, or shelter-in-place, rather than to evacuate. Such releases may be either accidental or intentional.

"Shelter-in-place" means selecting a building with few windows, or none, in which to take refuge. In many cases, local authorities will issue advice to shelter-in-place via TV or radio. Use common sense and available information to determine if this type of refuge is necessary. In any emergency, local authorities may or may not immediately be able to provide information on what is happening and what you should do. If large amounts of debris are in the air, or if local authorities say the air is badly contaminated, a shelter-in-place order should be issued by the Site Safety Officer.

To shelter-in-place, follow these instructions:

- Lock exterior doors and close windows, air vents and other openings.
- Turn off all fans, heating, and air conditioning systems where present.
- If there is danger of explosion, cover windows to protect against flying glass and debris.
- Use duct tape and plastic sheeting to seal all windows, doors, and vents.
- Gather essential disaster supplies such as food, bottled water, battery-powered radios, first aid supplies, etc.
- Write down names of everyone in the room and contact the Company's designated emergency contact to report who is in the room with you and their affiliation with the business.
- Avoid overcrowding and do not select a room with mechanical equipment like ventilation blowers or pipes because that equipment may not be able to be sealed properly.
- Call emergency contacts and have a phone available to report a life-threatening condition, if necessary.
- Listen to radio, etc., for further information and additional emergency notifications.

#### 4.2.14. Active Threat Response

An active shooter is an individual actively engaged in killing or attempting to kill people in a confined and other populated area. In most cases, active shooters use firearms and there is no pattern or method to their selection of victims. Most active shooter situations are unpredictable and evolve quickly. Because most incidents are over within minutes, we must be prepared to deal with the situation until law enforcement personnel arrive.

Preparedness and awareness are the keys to helping protect our employees, our customers, and ourselves. Active shooter incidents are becoming more frequent. Common motives include anger, revenge, ideology, and untreated mental illness.

All employees can help prevent and prepare for potential active shooter situations. This plan provides guidance to individuals, including managers and employees, so that they can prepare to respond to an active shooter situation.

Recommended actions, not in order, are:

1. Run: If there is an accessible escape path, attempt to evacuate the premises.
2. Hide: If evacuation is not possible, find a place to hide where the active shooter is less likely to find you.
3. Fight: As a last resort, and if your life is in imminent danger, attempt to disrupt and/or incapacitate the active shooter.

Training is important to enable you to react appropriately if confronted with an active shooter situation. As these situations evolve quickly, quick decisions could mean the difference between life and death. If you are in harm's way, you will need to decide rapidly what the safest course of action is based on the scenario that is unfolding.

The first recommended action is to run. If there is an accessible escape path, attempt to evacuate the premises. When running:

1. Have an escape route and plan in mind.
2. Leave your belongings behind.
3. Help others escape, if possible.
4. Evacuate regardless of whether others agree to follow.
5. Warn individuals not to enter an area where the active shooter may be.
6. Prevent individuals from entering an area where the active shooter may be.
7. Do not attempt to move wounded people.
8. Keep your hands visible.
9. Follow the instructions of any police officers.
10. Call 911 when it is safe to do so.

The next recommended action is to hide. If safe evacuation is not possible, find a place to hide from the active shooter. The hiding place should:

- 1) Be out of the active shooter's view.
- 2) Provide protection if shots are fired (for example, an office with a closed and locked door).
- 3) Not restrict options for movement.
- 4) To prevent an active shooter from entering a hiding place:
  - a) Lock the door.
  - b) Blockade the door with heavy furniture. This also provides additional protection.
  - c) Close, cover, and move away from any windows.
- 5) If the active shooter is nearby, take the following actions:
  - a) Lock the door.
  - b) Hide behind a large item (for example, a cabinet or desk).

- c) Silence your cell phone and/or pager. (Even the vibrate setting can give away a hiding position.)
- d) Remain quiet.

Consider the difference between cover and concealment. Cover might protect a person from gunfire, while concealment will merely hide a person from the view of the shooter.

Persons in an active shooter situation should quickly choose the best space that is available. Finding cover is preferable, but if cover is not available you should find a position of concealment.

When possible, provide the following information to law enforcement officers or 911 operators:

- 1) Location of the active shooter.
- 2) Number of shooters, if more than one.
- 3) Physical description of the shooter(s).
- 4) Number and type of weapons held by the shooter(s).
- 5) Number of potential victims at the location.

Finally, as an absolute last resort, and only if in imminent danger, attempt to disrupt and/or incapacitate the active shooter.

- 1) Act as aggressively as possible.
- 2) Throw items and use improvised weapons.
- 3) Work together to incapacitate the shooter.
- 4) Commit to your actions.

When law enforcement officers arrive at an active shooter scene:

- 1) Their immediate purpose is to stop the active shooter as soon as possible.
- 2) Officers will proceed directly to the area in which the last shots were heard.
- 3) The first officers to arrive at the scene will not stop to help injured persons because their priority is to eliminate the threat. They will need to secure the scene first.

When there is an emergency such as an active shooter incident, it is important to remember that officers arriving on scene may be coming from many different duty assignments and will likely be in various types of uniforms and even in street clothes. Do not be surprised by the variations in appearance, as law enforcement personnel are trained to react quickly and work together.

Emergency medical personnel will also arrive at the scene. Rescue teams will treat and remove any injured persons. These teams may request able-bodied individuals to assist in removing the wounded from the premises.

Reacting to Law Enforcement:

- 1) Remain calm.
- 2) Put down any items.
- 3) Raise hands and spread fingers.
- 4) Avoid quick movements.
- 5) Avoid pointing, screaming, or yelling.
- 6) Proceed in a direction as directed by law enforcement.

After reaching a safe location or assembly point, all persons involved in the situation likely will be held in that area by law enforcement until the situation is under control, and all witnesses have been identified and questioned.

No one should leave the safe location or assembly point until law enforcement authorities indicate it is safe and their questioning has been completed.



## 5. Training and Exercise

### 5.1. Training

Operator will maintain training programs to ensure personnel are adequately trained and prepared for the work they perform and for potential emergencies. Personnel, contractors, and consultants who regularly work for Operator must receive training on the current ERP.

Specific training is provided to workers who have special duties during emergencies, such as the Site Supervisor and Site Operator who may need to respond directly to an incident.

Site visitors and vendors will be accompanied by trained site personnel and shall sign in upon arrival and sign out when leaving. Site-designated First Responders will train and practice procedures for any site EMS responses and off-site emergency responses. Off-site response organizations should be offered training on site hazards; potential injuries and/or illnesses that could result from contamination by contact, ingestion, or inhalation of toxic substances present on site; and contamination risks associated with fires, explosions, or other releases of materials located on site. Site tours should be offered in conjunction with training partnerships. The schedule or interval of exercises and training that will be coordinated with the local government and responders.

### 5.2. Drills

Annual on-site drills shall be conducted to practice emergency response protocol and evaluate those responses. Such drills shall simulate a variety of emergencies and may involve a single field crew, the entire site personnel, and/or off-site emergency response organizations. Drills may also involve detailed coordination and physical role-playing to establish familiarity with these procedures. Drills help improve the Emergency Response process by addressing opportunities for improvement within the Emergency Response System used at this Site.

### 5.3. Schedule

Training with local responders will be scheduled and a record kept in the ERP.

Date	Training Topic	Participants

## 6. Plan Approval Finalized

The date the plan was finalized and approved by the local responding agency.

## 7. Spargo 1-36

COGCC ID: 322109

### 7.1. Local Responder Information

#### Local Emergency Coordinating Agency

##### **Dolores County Office of Emergency Management**

8477 Road 7.7  
Dove Creek, CO 81324  
(970) 769-0005 (Keith Keesling, Emergency Manager)

#### Local Law Enforcement

##### **Dolores County Sheriff**

409 Main St.  
Dove Creek, CO 81324  
(970) 677-2257

#### Local Fire Departments

##### **Dove Creek Volunteer Fire Department**

102 Main St.  
Dove Creek, CO 81324  
(970) 529-6679 (Fire Chief Jake Kline)

#### Life-Flight Provider

##### **Mercy Regional Medical Center- Lifeguard 5**

1010 Three Springs Blvd.  
Durango, Colorado 81301  
(970) 247-4311

#### Local Hospital

##### **Southwest Memorial Hospital**

1311 N Mildred Rd  
Cortez, CO 81321  
(970) 565-6666

#### EMS Providers

##### **Dove Creek Ambulance**

102 Main St.  
Dove Creek, CO 81324  
(970) 560-1053 (EMS Chief Grant Allen)

### 7.2. Location

#### 7.2.1. Directions From the Nearest Public Road Intersection

- From the intersection of CR V and CR 2.7, drive half a mile S on CR 2.7 where the road changes to CR W.
- Continue CR W one and a quarter more miles where the access to the pad will be on the N side of CR W.
- The well pad is approximately 300 yards N of the county road.
- Route maps can be found in Appendix A-Route Maps.

#### 7.2.2. Ingress and Egress Information.

Ingress and egress to Spargo 1-36 is via a gravel access road running due S from the well pad approximately 300 yards in length.

#### 7.2.3. Legal Description and Lat/Long

39N-20W-36 SESW

37.5933487°N, 109.0072265°W

### 7.3. Site Description

Spargo 1-36 is a single well pad located on private surface in an agricultural field in a rural area in Dolores County, Colorado. The nearest occupied structure is approximately 400 yards due south of the well pad.



#### 7.3.1. Detailed Site Map

A detailed layout of the Oil and Gas Location can be found in Appendix B-Facility Maps. The layout includes an inventory of equipment and potentially hazardous equipment on site, as well as a description of any sensitive areas that have potential to be impacted by the development.

#### 7.3.2. Mitigation of Impacts

Any spills, fires, or other threats to the facility which could harm the environment or nearby populations will be responded to as soon as they are discovered and in appropriate force to mitigate impacts in accordance with the procedures outlined in this plan. If impacts cannot be prevented upon initial response, additional resources will be deployed that are sufficient to mitigate impacts to the environment or nearby populations.

#### 7.3.3. Response Equipment On-Site

A 20-30 lb. fire extinguisher is present on every well pad and truck.

Spill kits are available at each facility and on each truck.

First-aid kits are available at each facility and on each truck.

## 8. Spargo 2

COGCC ID: 322111

### 8.1. Local Responder Information

#### Local Emergency Coordinating Agency

##### **Dolores County Office of Emergency Management**

8477 Road 7.7  
Dove Creek, CO 81324  
(970) 769-0005 (Keith Keesling, Emergency Manager)

#### Local Law Enforcement

##### **Dolores County Sheriff**

409 Main St.  
Dove Creek, CO 81324  
(970) 677-2257

#### Local Fire Departments

##### **Dove Creek Volunteer Fire Department**

102 Main St.  
Dove Creek, CO 81324  
(970) 529-6679 (Fire Chief Jake Kline)

#### Life-Flight Provider

##### **Mercy Regional Medical Center- Lifeguard 5**

1010 Three Springs Blvd.  
Durango, Colorado 81301  
(970) 247-4311

#### Local Hospital

##### **Southwest Memorial Hospital**

1311 N Mildred Rd  
Cortez, CO 81321  
(970) 565-6666

#### EMS Providers

##### **Dove Creek Ambulance**

102 Main St.  
Dove Creek, CO 81324  
(970) 560-1053 (EMS Chief Grant Allen)

### 8.2. Location

#### 8.2.1. Directions From the Nearest Public Road Intersection

- From the intersection of CR V and CR 2.7, drive half a mile S on CR 2.7 where the road changes to CR W.
- Continue CR W one more mile where the access to the pad will be on the S side of CR W.
- The injection well pad is approximately 480 yards S of the county road.
- Route maps can be found in Appendix A-Route Maps.

#### 8.2.2. Ingress and Egress Information.

Ingress and egress to Spargo 2 is via a gravel access road running due North from the well pad approximately 480 yards in length.

#### 8.2.3. Legal Description and Lat/Long

38N-20W-1 SENW

37.585793°N, 109.007666°W

### 8.3. Site Description

Spargo 2 is a brine injection single well pad located on private surface on the periphery of an agricultural field in a rural area of Dolores County, Colorado. The nearest occupied structure is approximately 340 yards due North of the well pad.



#### 8.3.1. Detailed Site Map

A detailed layout of the Oil and Gas Location can be found in Appendix B-Facility Maps. The layout includes an inventory of equipment and potentially hazardous equipment on site, as well as a description of any sensitive areas that have potential to be impacted by the development.

#### 8.3.2. Mitigation of Impacts

Any spills, fires, or other threats to the facility which could harm the environment or nearby populations will be responded to as soon as they are discovered and in appropriate force to mitigate impacts in accordance with the procedures outlined in this plan. If impacts cannot be prevented upon initial response, additional resources will be deployed that are sufficient to mitigate impacts to the environment or nearby populations.

#### 8.3.3. Response Equipment On-Site

A 20-30 lb. fire extinguisher is present on every well pad and truck.

Spill kits are available at each facility and on each truck.

First-aid kits are available at each facility and on each truck.

## 9. Southeast Spargo

COGCC ID: 322118

### 9.1. Local Responder Information

#### Local Emergency Coordinating Agency

##### **Dolores County Office of Emergency Management**

8477 Road 7.7  
Dove Creek, CO 81324  
(970) 769-0005 (Keith Keesling, Emergency Manager)

#### Local Law Enforcement

##### **Dolores County Sheriff**

409 Main St.  
Dove Creek, CO 81324  
(970) 677-2257

#### Local Fire Departments

##### **Dove Creek Volunteer Fire Department**

102 Main St.  
Dove Creek, CO 81324  
(970) 529-6679 (Fire Chief Jake Kline)

#### Life-Flight Provider

##### **Mercy Regional Medical Center- Lifeguard 5**

1010 Three Springs Blvd.  
Durango, Colorado 81301  
(970) 247-4311

#### Local Hospital

##### **Southwest Memorial Hospital**

1311 N Mildred Rd  
Cortez, CO 81321  
(970) 565-6666

#### EMS Providers

##### **Dove Creek Ambulance**

102 Main St.  
Dove Creek, CO 81324  
(970) 560-1053 (EMS Chief Grant Allen)

### 9.2. Location

#### 9.2.1. Directions From the Nearest Public Road Intersection

- From the intersection of CR V and CR 3.7, drive 2 miles S on CR 3.7.
- Take a right at the private road.
- Continue on private road 0.3 miles to an unlocked wire gate.
- Continue through gate and follow road for another 0.5 miles to the well pad.
- Route maps can be found in Appendix A-Route Maps.

#### 9.2.2. Ingress and Egress Information.

Ingress and egress to Southeast Spargo is via a gravel access road running through private land approximately 0.8 miles in distance from the turn off CR 3.7.

#### 9.2.3. Legal Description and Lat/Long

38N-20W-1 SESE

37.577983°W, 108.997365°W

### 9.3. Site Description

Southeast Spargo is a single well pad located on BLM surface in a rural area of Dolores County, Colorado. The nearest occupied structure is approximately 1500 yards due South of the well pad.



#### 9.3.1. Detailed Site Map

A detailed layout of the Oil and Gas Location can be found in Appendix B-Facility Maps. The layout includes an inventory of equipment and potentially hazardous equipment on site, as well as a description of any sensitive areas that have potential to be impacted by the development.

#### 9.3.2. Mitigation of Impacts

Any spills, fires, or other threats to the facility which could harm the environment or nearby populations will be responded to as soon as they are discovered and in appropriate force to mitigate impacts in accordance with the procedures outlined in this plan. If impacts cannot be prevented upon initial response, additional resources will be deployed that are sufficient to mitigate impacts to the environment or nearby populations.

#### 9.3.3. Response Equipment On-Site

A 20-30 lb. fire extinguisher is present on every well pad and truck. In addition, Island Butte A, Island Butte B, Cutthroat A, and Cutthroat B have dry chemical, ABC Class wheeled fire extinguishers with 300 lb. capacity and 60 second discharge time available near the tank batteries in an accessible location.

Spill kits are available at each facility and on each truck.

First-aid kits are available at each facility and on each truck.



## 10. Island Butte A

COGCC ID: 322115

### 10.1. Local Responder Information

#### Local Emergency Coordinating Agency

##### **Dolores County Office of Emergency Management**

8477 Road 7.7  
Dove Creek, CO 81324  
(970) 769-0005 (Keith Keesling, Emergency Manager)

#### Local Law Enforcement

##### **Dolores County Sheriff**

409 Main St.  
Dove Creek, CO 81324  
(970) 677-2257

#### Local Fire Departments

##### **Dove Creek Volunteer Fire Department**

102 Main St.  
Dove Creek, CO 81324  
(970) 529-6679 (Fire Chief Jake Kline)

#### Life-Flight Provider

##### **Mercy Regional Medical Center- Lifeguard 5**

1010 Three Springs Blvd.  
Durango, Colorado 81301  
(970) 247-4311

#### Local Hospital

##### **Southwest Memorial Hospital**

1311 N Mildred Rd  
Cortez, CO 81321  
(970) 565-6666

#### EMS Providers

##### **Dove Creek Ambulance**

102 Main St.  
Dove Creek, CO 81324  
(970) 560-1053 (EMS Chief Grant Allen)

### 10.2. Location

#### 10.2.1. Directions From the Nearest Public Road Intersection

- From the intersection of CR V and CR 3.7, drive 3.1 miles S on CR 3.7.
- Take a right at the access road to the well pad and facility.
- Route maps can be found in Appendix A-Route Maps.

#### 10.2.2. Ingress and Egress Information.

Ingress and egress to Island Butte B is via a gravel access road running due south from the well pad and facility approximately 150 yards to CR 3.7.

#### 10.2.3. Legal Description and Lat/Long

38N-19W-7 SWNW

37.566794°W, 108.993015°W

### 10.3. Site Description

Island Butte B is a single well and facility located on private surface in an agricultural field in a rural area. The nearest occupied structure is approximately 200 yards due southeast of the pad.



#### 10.3.1. Detailed Site Map

A detailed layout of the Oil and Gas Location can be found in Appendix B-Facility Maps. The layout includes an inventory of equipment and potentially hazardous equipment on site, as well as a description of any sensitive areas that have potential to be impacted by the development.

#### 10.3.2. Mitigation of Impacts

Any spills, fires, or other threats to the facility which could harm the environment or nearby populations will be responded to as soon as they are discovered and in appropriate force to mitigate impacts in accordance with the procedures outlined in this plan. If impacts cannot be prevented upon initial response, additional resources will be deployed that are sufficient to mitigate impacts to the environment or nearby populations.

#### 10.3.3. Response Equipment On-Site

A 20-30 lb. fire extinguisher is present on every well pad and truck. In addition, Island Butte A has a dry chemical, ABC Class wheeled fire extinguishers with 300 lb. capacity and 60 second discharge time available near the tank battery in an accessible location.

Spill kits are available at each facility and on each truck.

First-aid kits are available at each facility and on each truck.

## 11. Island Butte 3

COGCC ID: 322116

### 11.1. Local Responder Information

#### Local Emergency Coordinating Agency

##### **Dolores County Office of Emergency Management**

8477 Road 7.7  
Dove Creek, CO 81324  
(970) 769-0005 (Keith Keesling, Emergency Manager)

#### Local Law Enforcement

##### **Dolores County Sheriff**

409 Main St.  
Dove Creek, CO 81324  
(970) 677-2257

#### Local Fire Departments

##### **Dove Creek Volunteer Fire Department**

102 Main St.  
Dove Creek, CO 81324  
(970) 529-6679 (Fire Chief Jake Kline)

#### Life-Flight Provider

##### **Mercy Regional Medical Center- Lifeguard 5**

1010 Three Springs Blvd.  
Durango, Colorado 81301  
(970) 247-4311

#### Local Hospital

##### **Southwest Memorial Hospital**

1311 N Mildred Rd  
Cortez, CO 81321  
(970) 565-6666

#### EMS Providers

##### **Dove Creek Ambulance**

102 Main St.  
Dove Creek, CO 81324  
(970) 560-1053 (EMS Chief Grant Allen)

### 11.2. Location

#### 11.2.1. Directions from the Nearest Public Road Intersection

- From the intersection of CR V and CR 3.7, drive 3.4 miles S on CR 3.7.
- Take a left at the access road to the well pad and facility.
- Continue due W approximately half a mile down the access road before arriving at the well pad.
- Route maps can be found in Appendix A-Route Maps.

#### 11.2.2. Ingress and Egress Information.

Ingress and egress to Island Butte 3 is via a gravel access road running due east from the well pad approximately half a mile in length to CR 3.7.

#### 11.2.3. Legal Description and Lat/Long

38N-19W-7 SESW

37.560624°W, 108.987765°W

### 11.3. Site Description

Island Butte 3 is a single well pad located on BLM surface in a rural area of Dolores County, Colorado. The nearest occupied structure is approximately 700 yards northwest of the well pad.



#### 11.3.1. Detailed Site Map

A detailed layout of the Oil and Gas Location can be found in Appendix B-Facility Maps. The layout includes an inventory of equipment and potentially hazardous equipment on site, as well as a description of any sensitive areas that have potential to be impacted by the development.

#### 11.3.2. Mitigation of Impacts

Any spills, fires, or other threats to the facility which could harm the environment or nearby populations will be responded to as soon as they are discovered and in appropriate force to mitigate impacts in accordance with the procedures outlined in this plan. If impacts cannot be prevented upon initial response, additional resources will be deployed that are sufficient to mitigate impacts to the environment or nearby populations.

#### 11.3.3. Response Equipment On-Site

A 20-30 lb. fire extinguisher is present on every well pad and truck.

Spill kits are available at each facility and on each truck.

First-aid kits are available at each facility and on each truck.

## 12. Island Butte 1

COGCC ID: 381605

### 12.1. Local Responder Information

#### Local Emergency Coordinating Agency

##### **Dolores County Office of Emergency Management**

8477 Road 7.7  
Dove Creek, CO 81324  
(970) 769-0005 (Keith Keesling, Emergency Manager)

#### Local Law Enforcement

##### **Dolores County Sheriff**

409 Main St.  
Dove Creek, CO 81324  
(970) 677-2257

#### Local Fire Departments

##### **Dove Creek Volunteer Fire Department**

102 Main St.  
Dove Creek, CO 81324  
(970) 529-6679 (Fire Chief Jake Kline)

#### Life-Flight Provider

##### **Mercy Regional Medical Center- Lifeguard 5**

1010 Three Springs Blvd.  
Durango, Colorado 81301  
(970) 247-4311

#### Local Hospital

##### **Southwest Memorial Hospital**

1311 N Mildred Rd  
Cortez, CO 81321  
(970) 565-6666

#### EMS Providers

##### **Dove Creek Ambulance**

102 Main St.  
Dove Creek, CO 81324  
(970) 560-1053 (EMS Chief Grant Allen)

### 12.2. Location

#### 12.2.1. Directions From the Nearest Public Road Intersection

- From the intersection of CR V and CR 3.7, drive 4.65 miles south on CR 3.7.
- Take a left at the access road on to the fresh water well pad.
- Route maps can be found in Appendix A-Route Maps.

#### 12.2.2. Ingress and Egress Information.

Ingress and egress to Island Butte 1 is directly off CR 3.7.

#### 12.2.3. Legal Description and Lat/Long

38N-20W-13 NENE

37.557374°W, 108.998475°W

### 12.3. Site Description

Island Butte 1 is a single well pad located on BLM surface in a rural area of Dolores County, Colorado. The nearest occupied structure is approximately 1200 yards northeast of the well pad.

#### 12.3.1. Detailed Site Map

A detailed layout of the Oil and Gas Location can be found in Appendix B-Facility Maps. The layout includes an inventory of equipment and potentially hazardous equipment on site, as well as a description of any sensitive areas that have potential to be impacted by the development.



#### 12.3.2. Mitigation of Impacts

Any spills, fires, or other threats to the facility which could harm the environment or nearby populations will be responded to as soon as they are discovered and in appropriate force to mitigate impacts in accordance with the procedures outlined in this plan. If impacts cannot be prevented upon initial response, additional resources will be deployed that are sufficient to mitigate impacts to the environment or nearby populations.

#### 12.3.3. Response Equipment On-Site

A 20-30 lb. fire extinguisher is present on every well pad and truck.

Spill kits are available at each facility and on each truck.

First-aid kits are available at each facility and on each truck.

## 13. Canyon 1

COGCC ID: 322117

### 13.1. Local Responder Information

#### Local Emergency Coordinating Agency

##### **Dolores County Office of Emergency Management**

8477 Road 7.7  
Dove Creek, CO 81324  
(970) 769-0005 (Keith Keesling, Emergency Manager)

#### Local Law Enforcement

##### **Dolores County Sheriff**

409 Main St.  
Dove Creek, CO 81324  
(970) 677-2257

#### Local Fire Departments

##### **Dove Creek Volunteer Fire Department**

102 Main St.  
Dove Creek, CO 81324  
(970) 529-6679 (Fire Chief Jake Kline)

#### Life-Flight Provider

##### **Mercy Regional Medical Center- Lifeguard 5**

1010 Three Springs Blvd.  
Durango, Colorado 81301  
(970) 247-4311

#### Local Hospital

##### **Southwest Memorial Hospital**

1311 N Mildred Rd  
Cortez, CO 81321  
(970) 565-6666

#### EMS Providers

##### **Dove Creek Ambulance**

102 Main St.  
Dove Creek, CO 81324  
(970) 560-1053 (EMS Chief Grant Allen)

### 13.2. Location

#### 13.2.1. Directions From the Nearest Public Road Intersection

- From the intersection of CR V and CR 3.7, drive 6.1 miles S on CR 3.7.
- County road will terminate at the well pad.
- Route maps can be found in Appendix A-Route Maps.

#### 13.2.2. Ingress and Egress Information.

Ingress and egress to Canyon 1 is via a gravel access road directly off of CR 3.7

#### 13.2.3. Legal Description and Lat/Long

38N-20W-23 SENE

37.540704°W, 109.016105°W

### 13.3. Site Description

Canyon 1 is a single well pad located on BLM surface in a rural area of Dolores County, Colorado. The nearest occupied structure is approximately 3,900 yards northeast of the well pad.



#### 13.3.1. Detailed Site Map

A detailed layout of the Oil and Gas Location can be found in Appendix B-Facility Maps. The layout includes an inventory of equipment and potentially hazardous equipment on site, as well as a description of any sensitive areas that have potential to be impacted by the development.

#### 13.3.2. Mitigation of Impacts

Any spills, fires, or other threats to the facility which could harm the environment or nearby populations will be responded to as soon as they are discovered and in appropriate force to mitigate impacts in accordance with the procedures outlined in this plan. If impacts cannot be prevented upon initial response, additional resources will be deployed that are sufficient to mitigate impacts to the environment or nearby populations.

#### 13.3.3. Response Equipment On-Site

A 20-30 lb. fire extinguisher is present on every well pad and truck.

Spill kits are available at each facility and on each truck.

First-aid kits are available at each facility and on each truck.



## 14. Island Butte 7-AH

COGCC ID: 313561

### 14.1. Local Responder Information

#### Local Emergency Coordinating Agency

##### **Montezuma County Office of Emergency Management**

109 West Main, Suite 115  
Cortez, CO 81321  
(970) 564-4137 (Emergency Manager Jim Spratlen)

#### Local Law Enforcement

##### **Montezuma County Sheriff**

730 E Driscoll St  
Cortez, CO 81321  
(970) 565-8452

#### Local Fire Department

##### **Pleasant View Fire Department**

P.O. Box 291  
Pleasant View, CO 81331  
(970) 739-6060 (Fire Chief Angela Rohwer)

#### Life-Flight Provider

##### **Mercy Regional Medical Center- Lifeguard 5**

1010 Three Springs Blvd.  
Durango, Colorado 81301  
(970) 247-4311

#### Local Hospital

##### **Southwest Memorial Hospital**

1311 N Mildred Rd  
Cortez, CO 81321  
(970) 565-6666

#### EMS Provider

##### **Dove Creek Ambulance**

102 Main St.  
Dove Creek, CO 81324  
(970) 560-1053 (EMS Chief Grant Allen)

### 14.2. Location

#### 14.2.1. Directions from the Nearest Public Road Intersection

- From the intersection of CR 8 and CR BB, drive 4.5 miles south on CR BB where the county road will terminate end at a private gate.
- Continue through gate with gate code 4450.
- Continue south down private road for half a mile and take a right.
- Continue main access road through gate for one mile passing by Island Butte 12.
- Near Island Butte 5 there will be another gate with code 1955.
- Go through this gate and continue past Island Butte 5
- Road will terminate at Island Butte 7-AH after meandering through a patch of juniper woodlands.
- Route maps can be found in Appendix A-Route Maps.

#### 14.2.2. Ingress and Egress Information.

Ingress and egress to Island Butte 7-AH is via a private gravel access road off CR BB via a private access road.

#### 14.2.3. Legal Description and Lat/Long

38N-19W-20 NENE

37.543344°W, 108.962264°W



### 14.3. Site Description

Island Butte 7-AH is a single well pad located on private surface in a rural area of Montezuma County, Colorado. The nearest occupied structure is approximately 200 yards east of the well pad.

#### 14.3.1. Detailed Site Map

A detailed layout of the Oil and Gas Location can be found in Appendix B-Facility Maps. The layout includes an inventory of equipment and potentially hazardous equipment on site, as well as a description of any sensitive areas that have potential to be impacted by the development.

#### 14.3.2. Mitigation of Impacts

Any spills, fires, or other threats to the facility which could harm the environment or nearby populations will be responded to as soon as they are discovered and in appropriate force to mitigate impacts in accordance with the procedures outlined in this plan. If impacts cannot be prevented upon initial response, additional resources will be deployed that are sufficient to mitigate impacts to the environment or nearby populations.

#### 14.3.3. Response Equipment On-Site

A 20-30 lb. fire extinguisher is present on every well pad and truck.

Spill kits are available at each facility and on each truck.

First-aid kits are available at each facility and on each truck.

## 15. Island Butte 5

COGCC ID: 313557

### 15.1. Local Responder Information

#### Local Emergency Coordinating Agency

##### **Montezuma County Office of Emergency Management**

109 West Main, Suite 115  
Cortez, CO 81321  
(970) 564-4137 (Emergency Manager Jim Spratlen)

#### Local Fire Department

##### **Pleasant View Fire Department**

P.O. Box 291  
Pleasant View, CO 81331  
(970) 739-6060 (Fire Chief Angela Rohwer)

#### Local Hospital

##### **Southwest Memorial Hospital**

1311 N Mildred Rd  
Cortez, CO 81321  
(970) 565-6666

#### Local Law Enforcement

##### **Montezuma County Sheriff**

730 E Driscoll St  
Cortez, CO 81321  
(970) 565-8452

#### Life-Flight Provider

##### **Mercy Regional Medical Center- Lifeguard 5**

1010 Three Springs Blvd.  
Durango, Colorado 81301  
(970) 247-4311

#### EMS Provider

##### **Dove Creek Ambulance**

102 Main St.  
Dove Creek, CO 81324  
(970) 560-1053 (EMS Chief Grant Allen)

### 15.2. Location

#### 15.2.1. Directions from the Nearest Public Road Intersection

- From the intersection of CR 8 and CR BB, drive 4.5 miles south on CR BB where the county road will terminate end at a private gate.
- Continue through gate with gate code 4450.
- Continue south down private road for half a mile and take a right.
- Continue on main access road for 3/4 mile, passing Island Butte 12 before arriving at a gate with code 1955.
- Go through this gate and you will arrive at Island Butte 5.
- Route maps can be found in Appendix A-Route Maps.

#### 15.2.2. Ingress and Egress Information.

Ingress and egress to Island Butte 5 is via a gravel access road directly off CR BB via a private access road.

#### 15.2.3. Legal Description and Lat/Long

38N-19W-20 NENE

37.541434°W, 108.959774°W



### 15.3. Site Description

Island Butte 5 is a single well pad located on private surface in a rural area of Dolores County, Colorado. The nearest occupied structure is approximately 220 yards north of the well pad.

#### 15.3.1. Detailed Site Map

A detailed layout of the Oil and Gas Location can be found in Appendix B-Facility Maps. The layout includes an inventory of equipment and potentially hazardous equipment on site, as well as a description of any sensitive areas that have potential to be impacted by the development.

#### 15.3.2. Mitigation of Impacts

Any spills, fires, or other threats to the facility which could harm the environment or nearby populations will be responded to as soon as they are discovered and in appropriate force to mitigate impacts in accordance with the procedures outlined in this plan. If impacts cannot be prevented upon initial response, additional resources will be deployed that are sufficient to mitigate impacts to the environment or nearby populations.

#### 15.3.3. Response Equipment On-Site

A 20-30 lb. fire extinguisher is present on every well pad and truck.

Spill kits are available at each facility and on each truck.

First-aid kits are available at each facility and on each truck.

## 16. Island Butte 12

COGCC ID: 313571

### 16.1. Local Responder Information

#### Local Emergency Coordinating Agency

##### **Montezuma County Office of Emergency Management**

109 West Main, Suite 115  
Cortez, CO 81321  
(970) 564-4137 (Emergency Manager Jim Spratlen)

#### Local Law Enforcement

##### **Montezuma County Sheriff**

730 E Driscoll St  
Cortez, CO 81321  
(970) 565-8452

#### Local Fire Department

##### **Pleasant View Fire Department**

P.O. Box 291  
Pleasant View, CO 81331  
(970) 739-6060 (Fire Chief Angela Rohwer)

#### Life-Flight Provider

##### **Mercy Regional Medical Center- Lifeguard 5**

1010 Three Springs Blvd.  
Durango, Colorado 81301  
(970) 247-4311

#### Local Hospital

##### **Southwest Memorial Hospital**

1311 N Mildred Rd  
Cortez, CO 81321  
(970) 565-6666

#### EMS Provider

##### **Dove Creek Ambulance**

102 Main St.  
Dove Creek, CO 81324  
(970) 560-1053 (EMS Chief Grant Allen)

### 16.2. Location

#### 16.2.1. Directions From the Nearest Public Road Intersection

- From the intersection of CR 8 and CR BB, drive 4.5 miles south on CR BB where the county road will terminate end at a private gate.
- Continue through gate with gate code 4450.
- Continue south down private road for half a mile and take a right.
- Continue on main access road for 200 yards where you will arrive at Island Butte 12.
- Route maps can be found in Appendix A-Route Maps.

#### 16.2.2. Ingress and Egress Information.

Ingress and egress to Island Butte 12 is directly off CR BB via a private access road.

#### 16.2.3. Legal Description and Lat/Long

38N-19W-21 NENW

37.541044°W, 108.951864°W

### 16.3. Site Description

Island Butte 12 is a single brine injection well pad located on private surface in a rural area of Montezuma County, Colorado. The nearest occupied structure is approximately 730 yards northwest of the well pad.

#### 16.3.1. Detailed Site Map

A detailed layout of the Oil and Gas Location can be found in Appendix B-Facility Maps. The layout includes an inventory of equipment and potentially hazardous equipment on site, as well as a description of any sensitive areas that have potential to be impacted by the development.

#### 16.3.2. Mitigation of Impacts

Any spills, fires, or other threats to the facility which could harm the environment or nearby populations will be responded to as soon as they are discovered and in appropriate force to mitigate impacts in accordance with the procedures outlined in this plan. If impacts cannot be prevented upon initial response, additional resources will be deployed that are sufficient to mitigate impacts to the environment or nearby populations.

#### 16.3.3. Response Equipment On-Site

A 20-30 lb. fire extinguisher is present on every well pad and truck.

Spill kits are available at each facility and on each truck.

First-aid kits are available at each facility and on each truck.

## 17. Island Butte B

### 17.1. Local Responder Information

#### Local Emergency Coordinating Agency

##### **Montezuma County Office of Emergency Management**

109 West Main, Suite 115  
Cortez, CO 81321  
(970) 564-4137 (Emergency Manager Jim Spratlen)

#### Local Law Enforcement

##### **Montezuma County Sheriff**

730 E Driscoll St  
Cortez, CO 81321  
(970) 565-8452

#### Local Fire Department

##### **Pleasant View Fire Department**

P.O. Box 291  
Pleasant View, CO 81331  
(970) 739-6060 (Fire Chief Angela Rohwer)

#### Life-Flight Provider

##### **Mercy Regional Medical Center- Lifeguard 5**

1010 Three Springs Blvd.  
Durango, Colorado 81301  
(970) 247-4311

#### Local Hospital

##### **Southwest Memorial Hospital**

1311 N Mildred Rd  
Cortez, CO 81321  
(970) 565-6666

#### EMS Provider

##### **Dove Creek Ambulance**

102 Main St.  
Dove Creek, CO 81324  
(970) 560-1053 (EMS Chief Grant Allen)

### 17.2. Location

#### 17.2.1. Directions From the Nearest Public Road Intersection

- From the intersection of CR 8 and CR BB, drive 4.5 miles south on CR BB where the county road will terminate end at a private gate.
- Continue through gate with gate code 4450.
- Continue south down private road for half a mile and take a left where you will arrive at Island Butte B.
- Route maps can be found in Appendix A-Route Maps.

#### 17.2.2. Ingress and Egress Information.

Ingress and egress to Island Butte B is directly off of CR BB via private access road.

#### 17.2.3. Legal Description and Lat/Long

38N-19W-21 NENW

37.5418782°N, 108.9483764°W

### 17.3. Site Description

Island Butte B is a facility located on private surface in a rural area of Montezuma County, Colorado. The nearest occupied structure is approximately 1,000 yards northwest of the well pad.

#### 17.3.1. Detailed Site Map

A detailed layout of the Oil and Gas Location can be found in Appendix B-Facility Maps. The layout includes an inventory of equipment and potentially hazardous equipment on site, as well as a description of any sensitive areas that have potential to be impacted by the development.

#### 17.3.2. Mitigation of Impacts

Any spills, fires, or other threats to the facility which could harm the environment or nearby populations will be responded to as soon as they are discovered and in appropriate force to mitigate impacts in accordance with the procedures outlined in this plan. If impacts cannot be prevented upon initial response, additional resources will be deployed that are sufficient to mitigate impacts to the environment or nearby populations.

#### 17.3.3. Response Equipment On-Site

A 20-30 lb. fire extinguisher is present on every well pad and truck. In addition, Island Butte A has a dry chemical, ABC Class wheeled fire extinguishers with 300 lb. capacity and 60 second discharge time available near the tank battery in an accessible location.

Spill kits are available at each facility and on each truck.

First-aid kits are available at each facility and on each truck.



## 18. Island Butte 8

COGCC ID: 313558

### 18.1. Local Responder Information

#### Local Emergency Coordinating Agency

##### **Montezuma County Office of Emergency Management**

109 West Main, Suite 115  
Cortez, CO 81321  
(970) 564-4137 (Emergency Manager Jim Spratlen)

#### Local Law Enforcement

##### **Montezuma County Sheriff**

730 E Driscoll St  
Cortez, CO 81321  
(970) 565-8452

#### Local Fire Department

##### **Pleasant View Fire Department**

P.O. Box 291  
Pleasant View, CO 81331  
(970) 739-6060 (Fire Chief Angela Rohwer)

#### Life-Flight Provider

##### **Mercy Regional Medical Center- Lifeguard 5**

1010 Three Springs Blvd.  
Durango, Colorado 81301  
(970) 247-4311

#### Local Hospital

##### **Southwest Memorial Hospital**

1311 N Mildred Rd  
Cortez, CO 81321  
(970) 565-6666

#### EMS Provider

##### **Dove Creek Ambulance**

102 Main St.  
Dove Creek, CO 81324  
(970) 560-1053 (EMS Chief Grant Allen)

### 18.2. Location

#### 18.2.1. Directions From the Nearest Public Road Intersection

- From the intersection of CR 8 and CR BB, drive 4.5 miles south on CR BB where the county road will terminate end at a private gate.
- Continue through gate with gate code 4450.
- Continue south down private road for half a mile and take a left.
- Continue 0.2 miles through Island Butte B, before arriving at Island Butte 8.
- Route maps can be found in Appendix A-Route Maps.

#### 18.2.2. Ingress and Egress Information.

Ingress and egress to Island Butte B is directly off CR BB via private access road.

### 18.3. Legal Description and Lat/Long

38N-19W-21 NWNE

37.5415082°N, 108.9461661°W

### 18.4. Site Description

Island Butte 8 is a single well pad located on private land in rural area of Montezuma County, Colorado. The nearest occupied structure is approximately 1,170 yards northwest of the well pad.

#### 18.4.1. Detailed Site Map

A detailed layout of the Oil and Gas Location can be found in Appendix B-Facility Maps. The layout includes an inventory of equipment and potentially hazardous equipment on site, as well as a description of any sensitive areas that have potential to be impacted by the development.

#### 18.4.2. Mitigation of Impacts

Any spills, fires, or other threats to the facility which could harm the environment or nearby populations will be responded to as soon as they are discovered and in appropriate force to mitigate impacts in accordance with the procedures outlined in this plan. If impacts cannot be prevented upon initial response, additional resources will be deployed that are sufficient to mitigate impacts to the environment or nearby populations.

#### 18.4.3. Response Equipment On-Site

A 20-30 lb. fire extinguisher is present on every well pad and truck.

Spill kits are available at each facility and on each truck.

First-aid kits are available at each facility and on each truck.

## 19. Cutthroat 9

COGCC ID: 313563

### 19.1. Local Responder Information

#### Local Emergency Coordinating Agency

##### **Montezuma County Office of Emergency Management**

109 West Main, Suite 115  
Cortez, CO 81321  
(970) 564-4137 (Emergency Manager Jim Spratlen)

#### Local Law Enforcement

##### **Montezuma County Sheriff**

730 E Driscoll St  
Cortez, CO 81321  
(970) 565-8452

#### Local Fire Department

##### **Pleasant View Fire Department**

P.O. Box 291  
Pleasant View, CO 81331  
(970) 739-6060 (Fire Chief Angela Rohwer)

#### Life-Flight Provider

##### **Mercy Regional Medical Center- Lifeguard 5**

1010 Three Springs Blvd.  
Durango, Colorado 81301  
(970) 247-4311

#### Local Hospital

##### **Southwest Memorial Hospital**

1311 N Mildred Rd  
Cortez, CO 81321  
(970) 565-6666

#### EMS Provider

##### **Southwest Health System**

1311 N Mildred Rd.  
Cortez, CO 81321  
(970) 565-6666

### 19.2. Location

#### 19.2.1. Directions From the Nearest Public Road Intersection

- From the intersection of CR Y and CR 11, drive 2.9 miles E then south on CR Y
- Take a right at CR W.6.
- Continue for 3.75 miles onto private land and access road with gate code 0801 where the road will terminate at the well pad.
- Route maps can be found in Appendix A-Route Maps.

#### 19.2.2. Ingress and Egress Information.

Ingress and egress to Cutthroat 9 is via a private gravel access road on CR W.6.

#### 19.2.3. Legal Description and Lat/Long

37N-19W-3 SENW

37.4954777°N, 108.9321577°W

### 19.3. Site Description

Cutthroat 9 is a single well pad located on private surface in a rural area of Montezuma County, Colorado. The nearest occupied structure is approximately 1,700 yards west of the well pad.



#### 19.3.1. Detailed Site Map

A detailed layout of the Oil and Gas Location can be found in Appendix B-Facility Maps. The layout includes an inventory of equipment and potentially hazardous equipment on site, as well as a description of any sensitive areas that have potential to be impacted by the development.

#### 19.3.2. Mitigation of Impacts

Any spills, fires, or other threats to the facility which could harm the environment or nearby populations will be responded to as soon as they are discovered and in appropriate force to mitigate impacts in accordance with the procedures outlined in this plan. If impacts cannot be prevented upon initial response, additional resources will be deployed that are sufficient to mitigate impacts to the environment or nearby populations.

#### 19.3.3. Response Equipment On-Site

A 20-30 lb. fire extinguisher is present on every well pad and truck.

Spill kits are available at each facility and on each truck.

First-aid kits are available at each facility and on each truck.

## 20. Cutthroat 4

COGCC ID: 313539

### 20.1. Local Responder Information

#### Local Emergency Coordinating Agency

##### **Montezuma County Office of Emergency Management**

109 West Main, Suite 115  
Cortez, CO 81321  
(970) 564-4137 (Emergency Manager Jim Spratlen)

#### Local Law Enforcement

##### **Montezuma County Sheriff**

730 E Driscoll St  
Cortez, CO 81321  
(970) 565-8452

#### Local Fire Department

##### **Pleasant View Fire Department**

P.O. Box 291  
Pleasant View, CO 81331  
(970) 739-6060 (Fire Chief Angela Rohwer)

#### Life-Flight Provider

##### **Mercy Regional Medical Center- Lifeguard 5**

1010 Three Springs Blvd.  
Durango, Colorado 81301  
(970) 247-4311

#### Local Hospital

##### **Southwest Memorial Hospital**

1311 N Mildred Rd  
Cortez, CO 81321  
(970) 565-6666

#### EMS Provider

##### **Southwest Health System**

1311 N Mildred Rd.  
Cortez, CO 81321  
(970) 565-6666

### 20.2. Location

#### 20.2.1. Directions from the Nearest Public Road Intersection

- From the intersection of CR Y and CR 11, drive 4.8 miles E then south on CR Y until arriving at locked gate with code 9231.
- Continue 2.9 more miles along CR Y, passing by McClean 2 and Cutthroat A Facility to locked gate with code 2870.
- Continue through locked gate onto private land for 0.7 miles before arriving at the well pad.
- Route maps can be found in Appendix A-Route Maps.

#### 20.2.2. Ingress and Egress Information.

Ingress and egress to Cutthroat 4 is via a private gravel access road directly off of CR Y.

#### 20.2.3. Legal Description and Lat/Long

37N-19W-10 SENW

37.4788451°N, 108.9317668°W

### 20.3. Site Description

Cutthroat 4 is a single well pad located on private surface in a rural area of Montezuma County, Colorado. The nearest occupied structure is approximately 2,470 yards northwest of the well pad.



#### 20.3.1. Detailed Site Map

A detailed layout of the Oil and Gas Location can be found in Appendix B-Facility Maps. The layout includes an inventory of equipment and potentially hazardous equipment on site, as well as a description of any sensitive areas that have potential to be impacted by the development.

#### 20.3.2. Mitigation of Impacts

Any spills, fires, or other threats to the facility which could harm the environment or nearby populations will be responded to as soon as they are discovered and in appropriate force to mitigate impacts in accordance with the procedures outlined in this plan. If impacts cannot be prevented upon initial response, additional resources will be deployed that are sufficient to mitigate impacts to the environment or nearby populations.

#### 20.3.3. Response Equipment On-Site

A 20-30 lb. fire extinguisher is present on every well pad and truck.

Spill kits are available at each facility and on each truck.

First-aid kits are available at each facility and on each truck.

## 21. Cutthroat A

COGCC ID: 313527

### 21.1. Local Responder Information

#### Local Emergency Coordinating Agency

##### **Montezuma County Office of Emergency Management**

109 West Main, Suite 115  
Cortez, CO 81321  
(970) 564-4137 (Emergency Manager Jim Spratlen)

#### Local Law Enforcement

##### **Montezuma County Sheriff**

730 E Driscoll St  
Cortez, CO 81321  
(970) 565-8452

#### Local Fire Department

##### **Pleasant View Fire Department**

P.O. Box 291  
Pleasant View, CO 81331  
(970) 739-6060 (Fire Chief Angela Rohwer)

#### Life-Flight Provider

##### **Mercy Regional Medical Center- Lifeguard 5**

1010 Three Springs Blvd.  
Durango, Colorado 81301  
(970) 247-4311

#### Local Hospital

##### **Southwest Memorial Hospital**

1311 N Mildred Rd  
Cortez, CO 81321  
(970) 565-6666

#### EMS Provider

##### **Southwest Health System**

1311 N Mildred Rd.  
Cortez, CO 81321  
(970) 565-6666

### 21.2. Location

#### 21.2.1. Directions from the Nearest Public Road Intersection

- From the intersection of CR Y and CR 11, drive 4.8 miles east then south on CR Y until arriving at a locked gate with code 9231.
- Continue 2.7 more miles along CR Y, passing by McClean 2, before arriving at Cutthroat A.
- Route maps can be found in Appendix A-Route Maps.

#### 21.2.2. Ingress and Egress Information.

Ingress and egress to Cutthroat A is via CR Y.

#### 21.2.3. Legal Description and Lat/Long

37N-19W-10 SWSE

37.4712525°N, 108.9291124°W

### 21.3. Site Description

Cutthroat A is a facility located on BLM surface in a rural area of Montezuma County, Colorado. The nearest occupied structure is approximately 3,180 yards northeast of the well pad.

#### 21.3.1. Detailed Site Map

A detailed layout of the Oil and Gas Location can be found in Appendix B-Facility Maps. The layout includes an inventory of equipment and potentially hazardous equipment on site, as well as a description of any sensitive areas that have potential to be impacted by the development.

#### 21.3.2. Mitigation of Impacts

Any spills, fires, or other threats to the facility which could harm the environment or nearby populations will be responded to as soon as they are discovered and in appropriate force to mitigate impacts in accordance with the procedures outlined in this plan. If impacts cannot be prevented upon initial response, additional resources will be deployed that are sufficient to mitigate impacts to the environment or nearby populations.

#### 21.3.3. Response Equipment On-Site

A 20-30 lb. fire extinguisher is present on every well pad and truck. In addition, Island Butte A has a dry chemical, ABC Class wheeled fire extinguishers with 300 lb. capacity and 60 second discharge time available near the tank battery in an accessible location.

Spill kits are available at each facility and on each truck.

First-aid kits are available at each facility and on each truck.



## 22. McClean 2

COGCC ID: 313455

### 22.1. Local Responder Information

#### Local Emergency Coordinating Agency

##### **Montezuma County Office of Emergency Management**

109 West Main, Suite 115  
Cortez, CO 81321  
(970) 564-4137 (Emergency Manager Jim Spratlen)

#### Local Law Enforcement

##### **Montezuma County Sheriff**

730 E Driscoll St  
Cortez, CO 81321  
(970) 565-8452

#### Local Fire Department

##### **Pleasant View Fire Department**

P.O. Box 291  
Pleasant View, CO 81331  
(970) 739-6060 (Fire Chief Angela Rohwer)

#### Life-Flight Provider

##### **Mercy Regional Medical Center- Lifeguard 5**

1010 Three Springs Blvd.  
Durango, Colorado 81301  
(970) 247-4311

#### Local Hospital

##### **Southwest Memorial Hospital**

1311 N Mildred Rd  
Cortez, CO 81321  
(970) 565-6666

#### EMS Provider

##### **Southwest Health System**

1311 N Mildred Rd.  
Cortez, CO 81321  
(970) 565-6666

### 22.2. Location

#### 22.2.1. Directions from the Nearest Public Road Intersection

- From the intersection of CR Y and CR 11, drive 4.8 miles east then south on CR Y until arriving at locked gate with code 9231.
- Continue 2.3 more miles along CR Y, turning right to arrive at. McClean 2

#### 22.2.2. Ingress and Egress Information.

Ingress and egress to McClean 2 is via CR Y.

#### 22.2.3. Legal Description and Lat/Long

37N-19W-15 SWNE

37.4654533°N, 108.9283784°W

### 22.3. Site Description

McClean 2 is a single brine injection well located on BLM surface in a rural area of Montezuma County, Colorado. The nearest occupied structure is approximately 3,500 yards NE of the well pad.

#### 22.3.1. Detailed Site Map

A detailed layout of the Oil and Gas Location can be found in Appendix B-Facility Maps. The layout includes an inventory of equipment and potentially hazardous equipment on site, as well as a description of any sensitive areas that have potential to be impacted by the development.



#### 22.3.2. Mitigation of Impacts

Any spills, fires, or other threats to the facility which could harm the environment or nearby populations will be responded to as soon as they are discovered and in appropriate force to mitigate impacts in accordance with the procedures outlined in this plan. If impacts cannot be prevented upon initial response, additional resources will be deployed that are sufficient to mitigate impacts to the environment or nearby populations.

#### 22.3.3. Response Equipment On-Site

A 20-30 lb. fire extinguisher is present on every well pad and truck.

Spill kits are available at each facility and on each truck.

First-aid kits are available at each facility and on each truck.

## 23. Cutthroat 3

COGCC ID: 313536

### 23.1. Local Responder Information

#### Local Emergency Coordinating Agency

##### **Montezuma County Office of Emergency Management**

109 West Main, Suite 115  
Cortez, CO 81321  
(970) 564-4137 (Emergency Manager Jim Spratlen)

#### Local Fire Department

##### **Pleasant View Fire Department**

P.O. Box 291  
Pleasant View, CO 81331  
(970) 739-6060 (Fire Chief Angela Rohwer)

#### Local Hospital

##### **Southwest Memorial Hospital**

1311 N Mildred Rd  
Cortez, CO 81321  
(970) 565-6666

#### Local Law Enforcement

##### **Montezuma County Sheriff**

730 E Driscoll St  
Cortez, CO 81321  
(970) 565-8452

#### Life-Flight Provider

##### **Mercy Regional Medical Center- Lifeguard 5**

1010 Three Springs Blvd.  
Durango, Colorado 81301  
(970) 247-4311

#### EMS Provider

##### **Southwest Health System**

1311 N Mildred Rd.  
Cortez, CO 81321  
(970) 565-6666

### 23.2. Location

#### 23.2.1. Directions from the Nearest Public Road Intersection

- From the intersection of CR Y and CR 9.2, drive 1.3 miles south on CR 9.2 to the locked gate.
- Lock # 5 combination is 9231.
- Continue through the gate and drive 3.6 more miles before turning off right to access Cutthroat 3.
- Route maps can be found in Appendix A-Route Maps.

#### 23.2.2. Ingress and Egress Information.

Ingress and egress to Cutthroat 3 is via a gravel access road directly off CR 9.2.

#### 23.2.3. Legal Description and Lat/Long

37N-19W-23 SESW

37.4437578°N, 108.9149385°W

### 23.3. Site Description

Cutthroat 3 a single well pad located on BLM surface in a rural area of Montezuma County, Colorado. The nearest occupied structure is approximately 4,900 yards north of the well pad.



#### 23.3.1. Detailed Site Map

A detailed layout of the Oil and Gas Location can be found in Appendix B-Facility Maps. The layout includes an inventory of equipment and potentially hazardous equipment on site, as well as a description of any sensitive areas that have potential to be impacted by the development.

#### 23.3.2. Mitigation of Impacts

Any spills, fires, or other threats to the facility which could harm the environment or nearby populations will be responded to as soon as they are discovered and in appropriate force to mitigate impacts in accordance with the procedures outlined in this plan. If impacts cannot be prevented upon initial response, additional resources will be deployed that are sufficient to mitigate impacts to the environment or nearby populations.

#### 23.3.3. Response Equipment On-Site

A 20-30 lb. fire extinguisher is present on every well pad and truck.

Spill kits are available at each facility and on each truck.

First-aid kits are available at each facility and on each truck.

## 24. Cutthroat B

COGCC: 313548

### 24.1. Local Responder Information

#### Local Emergency Coordinating Agency

##### **Montezuma County Office of Emergency Management**

109 West Main, Suite 115  
Cortez, CO 81321  
(970) 564-4137 (Emergency Manager Jim Spratlen)

#### Local Law Enforcement

##### **Montezuma County Sheriff**

730 E Driscoll St  
Cortez, CO 81321  
(970) 565-8452

#### Local Fire Department

##### **Pleasant View Fire Department**

P.O. Box 291  
Pleasant View, CO 81331  
(970) 739-6060 (Fire Chief Angela Rohwer)

#### Life-Flight Provider

##### **Mercy Regional Medical Center- Lifeguard 5**

1010 Three Springs Blvd.  
Durango, Colorado 81301  
(970) 247-4311

#### Local Hospital

##### **Southwest Memorial Hospital**

1311 N Mildred Rd  
Cortez, CO 81321  
(970) 565-6666

#### EMS Provider

##### **Southwest Health System**

1311 N Mildred Rd.  
Cortez, CO 81321  
(970) 565-6666

### 24.2. Location

#### 24.2.1. Directions from the Nearest Public Road Intersection

- From the intersection of CR Y and CR 9.2, drive 1.3 miles south on CR 9.2 to the locked gate.
- Lock # 5 combination is 9231.
- Continue through the gate and drive 4.3 more miles, arriving at Cutthroat B facility.
- Route maps can be found in Appendix A-Route Maps.

#### 24.2.2. Ingress and Egress Information.

Ingress and egress to Cutthroat B is via a gravel access road directly off CR 9.2.

#### 24.2.3. Legal Description and Lat/Long

37N-19W-26 SWNE

37.4370559°N, 108.9107124°W

### 24.3. Site Description

Cutthroat B is a well and facility located on BLM surface in a rural area of Montezuma County, Colorado. The nearest occupied structure is approximately 5,580 yards northeast of the well pad.



#### 24.3.1. Detailed Site Map

A detailed layout of the Oil and Gas Location can be found in Appendix B-Facility Maps. The layout includes an inventory of equipment and potentially hazardous equipment on site, as well as a description of any sensitive areas that have potential to be impacted by the development.

#### 24.3.2. Mitigation of Impacts

Any spills, fires, or other threats to the facility which could harm the environment or nearby populations will be responded to as soon as they are discovered and in appropriate force to mitigate impacts in accordance with the procedures outlined in this plan. If impacts cannot be prevented upon initial response, additional resources will be deployed that are sufficient to mitigate impacts to the environment or nearby populations.

#### 24.3.3. Response Equipment On-Site

A 20-30 lb. fire extinguisher is present on every well pad and truck. In addition, Island Butte A has a dry chemical, ABC Class wheeled fire extinguishers with 300 lb. capacity and 60 second discharge time available near the tank battery in an accessible location.

Spill kits are available at each facility and on each truck.

First-aid kits are available at each facility and on each truck.

## 25. Cutthroat 8

COGCC ID: 313553

### 25.1. Local Responder Information

#### Local Emergency Coordinating Agency

##### **Montezuma County Office of Emergency Management**

109 West Main, Suite 115  
Cortez, CO 81321  
(970) 564-4137 (Emergency Manager Jim Spratlen)

#### Local Law Enforcement

##### **Montezuma County Sheriff**

730 E Driscoll St  
Cortez, CO 81321  
(970) 565-8452

#### Local Fire Department

##### **Pleasant View Fire Department**

P.O. Box 291  
Pleasant View, CO 81331  
(970) 739-6060 (Fire Chief Angela Rohwer)

#### Life-Flight Provider

##### **Mercy Regional Medical Center- Lifeguard 5**

1010 Three Springs Blvd.  
Durango, Colorado 81301  
(970) 247-4311

#### Local Hospital

##### **Southwest Memorial Hospital**

1311 N Mildred Rd  
Cortez, CO 81321  
(970) 565-6666

#### EMS Provider

##### **Southwest Health System**

1311 N Mildred Rd.  
Cortez, CO 81321  
(970) 565-6666

### 25.2. Location

#### 25.2.1. Directions from the Nearest Public Road Intersection

- From the intersection of CR Y and CR 9.2, drive 1.3 miles south on CR 9.2 to the locked gate.
- Lock # 5 combination is 9231.
- Continue through the gate and drive 4.3 more miles, arriving at Cutthroat B facility.
- Continue through the Cutthroat B facility and drive S another 0.5 miles, where you will arrive at Cutthroat 8.
- Route maps can be found in Appendix A-Route Maps.

#### 25.2.2. Ingress and Egress Information.

Ingress and egress to Cutthroat 8 is via a gravel access road directly off CR 9.2 and the Cutthroat B facility

#### 25.2.3. Legal Description and Lat/Long

37N-19W-26 SWSE

37.4299459°N, 108.9109308°W

### 25.3. Site Description

Cutthroat 8 is a single well pad located on BLM surface in rural area of Montezuma County, Colorado. The nearest occupied structure is approximately 6,480 yards north of the well pad.



#### 25.3.1. Detailed Site Map

A detailed layout of the Oil and Gas Location can be found in Appendix B-Facility Maps. The layout includes an inventory of equipment and potentially hazardous equipment on site, as well as a description of any sensitive areas that have potential to be impacted by the development.

#### 25.3.2. Mitigation of Impacts

Any spills, fires, or other threats to the facility which could harm the environment or nearby populations will be responded to as soon as they are discovered and in appropriate force to mitigate impacts in accordance with the procedures outlined in this plan. If impacts cannot be prevented upon initial response, additional resources will be deployed that are sufficient to mitigate impacts to the environment or nearby populations.

#### 25.3.3. Response Equipment On-Site

A 20-30 lb. fire extinguisher is present on every well pad and truck.

Spill kits are available at each facility and on each truck.

First-aid kits are available at each facility and on each truck.



## 26. Cutthroat 12

COGCC ID: 313578

### 26.1. Local Responder Information

#### Local Emergency Coordinating Agency

##### **Montezuma County Office of Emergency Management**

109 West Main, Suite 115  
Cortez, CO 81321  
(970) 564-4137 (Emergency Manager Jim Spratlen)

#### Local Law Enforcement

##### **Montezuma County Sheriff**

730 E Driscoll St  
Cortez, CO 81321  
(970) 565-8452

#### Local Fire Department

##### **Pleasant View Fire Department**

P.O. Box 291  
Pleasant View, CO 81331  
(970) 739-6060 (Fire Chief Angela Rohwer)

#### Life-Flight Provider

##### **Mercy Regional Medical Center- Lifeguard 5**

1010 Three Springs Blvd.  
Durango, Colorado 81301  
(970) 247-4311

#### Local Hospital

##### **Southwest Memorial Hospital**

1311 N Mildred Rd  
Cortez, CO 81321  
(970) 565-6666

#### EMS Provider

##### **Southwest Health System**

1311 N Mildred Rd.  
Cortez, CO 81321  
(970) 565-6666

### 26.2. Location

#### 26.2.1. Directions from the Nearest Public Road Intersection

- From the intersection of CR Y and CR 9.2, drive 1.3 miles south on CR 9.2 to the locked gate.
- Lock # 5 combination is 9231.
- Continue through the gate and drive 4.3 more miles, arriving at Cutthroat B facility.
- Continue through the Cutthroat B facility and drive south another 1.3 miles and turn left where you will arrive at Cutthroat 12.
- Route maps can be found in Appendix A-Route Maps.

#### 26.2.2. Ingress and Egress Information.

Ingress and egress to Cutthroat 12 is via a gravel access road directly off of CR 9.2.

#### 26.2.3. Legal Description and Lat/Long

37N-19W-35 SWNE

37.4240674°N, 108.9124431°W

### 26.3. Site Description

Cutthroat 12 is a single well pad located on BLM surface in a rural area of Montezuma County, Colorado. The nearest occupied structure is approximately 7,150 yards north of the well pad.



#### 26.3.1. Detailed Site Map

A detailed layout of the Oil and Gas Location can be found in Appendix B-Facility Maps. The layout includes an inventory of equipment and potentially hazardous equipment on site, as well as a description of any sensitive areas that have potential to be impacted by the development.

#### 26.3.2. Mitigation of Impacts

Any spills, fires, or other threats to the facility which could harm the environment or nearby populations will be responded to as soon as they are discovered and in appropriate force to mitigate impacts in accordance with the procedures outlined in this plan. If impacts cannot be prevented upon initial response, additional resources will be deployed that are sufficient to mitigate impacts to the environment or nearby populations.

#### 26.3.3. Response Equipment On-Site

A 20-30 lb. fire extinguisher is present on every well pad and truck.

Spill kits are available at each facility and on each truck.

First-aid kits are available at each facility and on each truck.

## 27. Cutthroat 14

COGCC ID: 313581

### 27.1. Local Responder Information

#### Local Emergency Coordinating Agency

##### **Montezuma County Office of Emergency Management**

109 West Main, Suite 115  
Cortez, CO 81321  
(970) 564-4137 (Emergency Manager Jim Spratlen)

#### Local Law Enforcement

##### **Montezuma County Sheriff**

730 E Driscoll St  
Cortez, CO 81321  
(970) 565-8452

#### Local Fire Department

##### **Pleasant View Fire Department**

P.O. Box 291  
Pleasant View, CO 81331  
(970) 739-6060 (Fire Chief Angela Rohwer)

#### Life-Flight Provider

##### **Mercy Regional Medical Center- Lifeguard 5**

1010 Three Springs Blvd.  
Durango, Colorado 81301  
(970) 247-4311

#### Local Hospital

##### **Southwest Memorial Hospital**

1311 N Mildred Rd  
Cortez, CO 81321  
(970) 565-6666

#### EMS Provider

##### **Southwest Health System**

1311 N Mildred Rd.  
Cortez, CO 81321  
(970) 565-6666

### 27.2. Location

#### 27.2.1. Directions From the Nearest Public Road Intersection

- From the intersection of CR Y and CR 9.2, drive 1.3 miles south on CR 9.2 to the locked gate.
- Lock # 5 combination is 9231.
- Continue through the gate and drive 4.3 more miles, arriving at Cutthroat B facility.
- Continue through the Cutthroat B facility and drive south another 1.8 miles where the road terminates at Cutthroat 14.
- Route maps can be found in Appendix A-Route Maps.

#### 27.2.2. Ingress and Egress Information.

Ingress and egress to Cutthroat 14 is via a gravel access road directly off of CR 9.2.

#### 27.2.3. Legal Description and Lat/Long

37N-19W-35 SESW

37.4164736°N, 108.9137980°W

### 27.3. Site Description

Cutthroat 14 is located on BLM land in a rural area of Montezuma County, Colorado. The nearest occupied structure is approximately 8,100 yards NE of the well pad.

#### 27.3.1. Detailed Site Map

A detailed layout of the Oil and Gas Location can be found in Appendix B-Facility Maps. The layout includes an inventory of equipment and potentially hazardous equipment on site, as well as a description of any sensitive areas that have potential to be impacted by the development.

#### 27.3.2. Mitigation of Impacts

Any spills, fires, or other threats to the facility which could harm the environment or nearby populations will be responded to as soon as they are discovered and in appropriate force to mitigate impacts in accordance with the procedures outlined in this plan. If impacts cannot be prevented upon initial response, additional resources will be deployed that are sufficient to mitigate impacts to the environment or nearby populations.

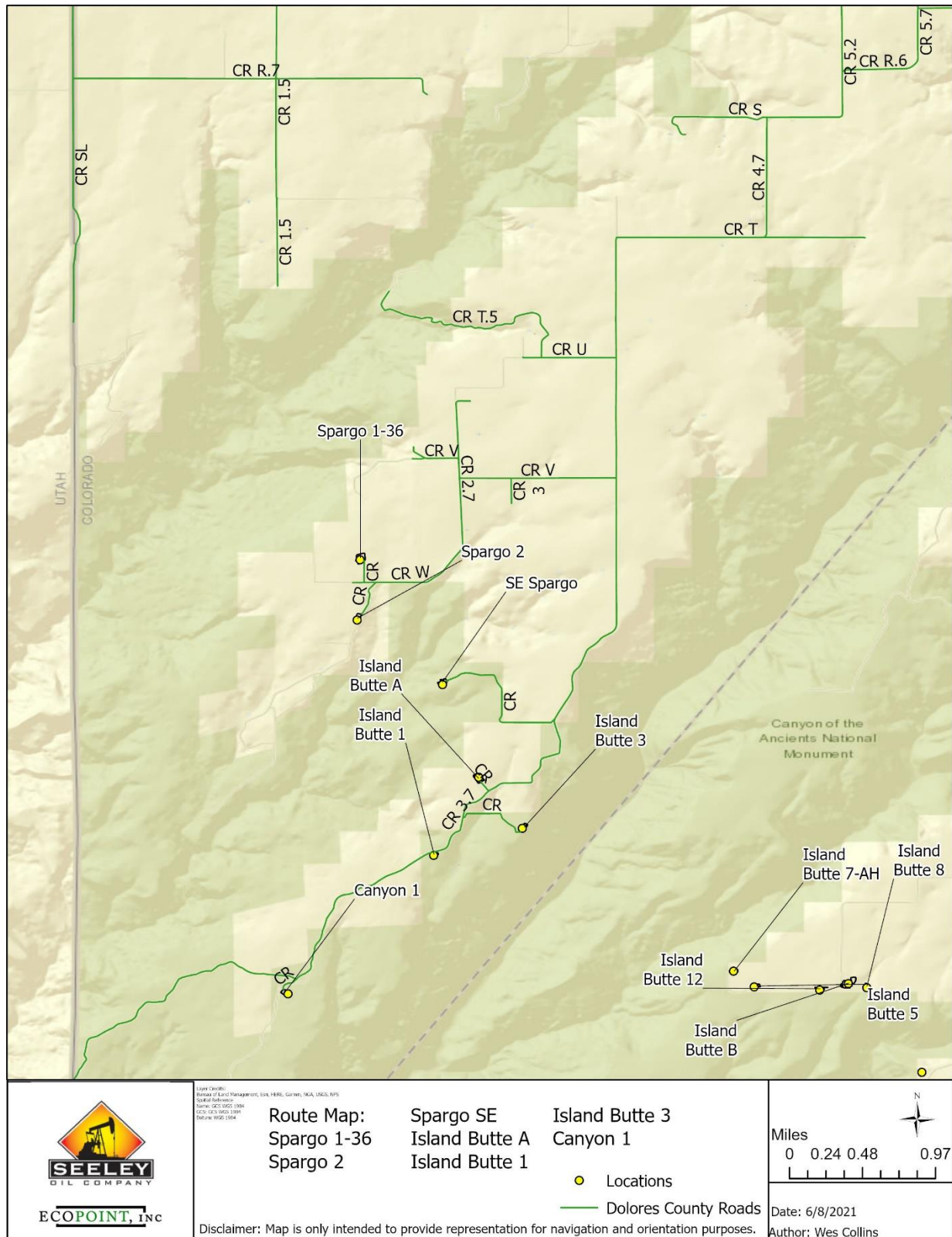
#### 27.3.3. Response Equipment On-Site

A 20-30 lb. fire extinguisher is present on every well pad and truck.

Spill kits are available at each facility and on each truck.

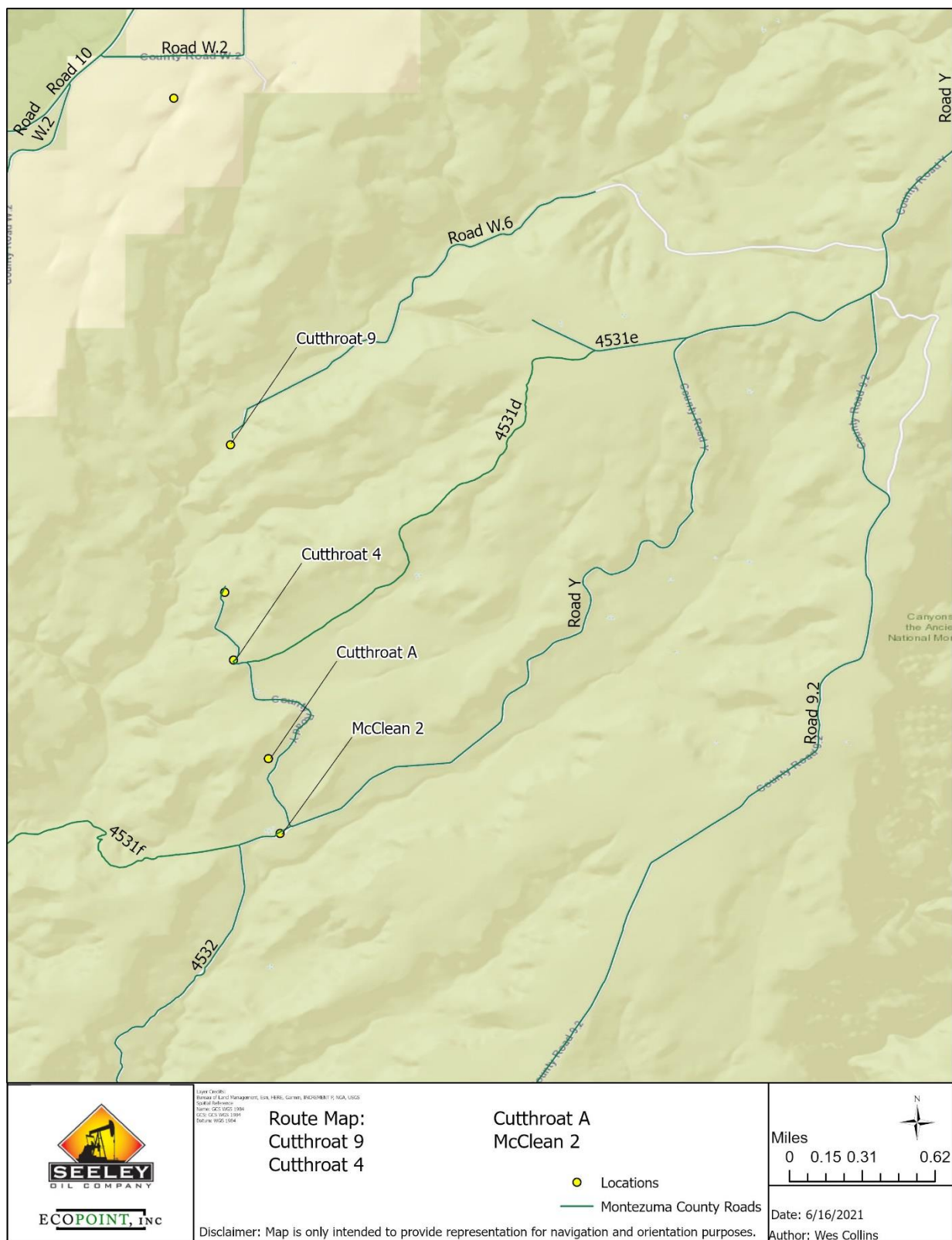
First-aid kits are available at each facility and on each truck.

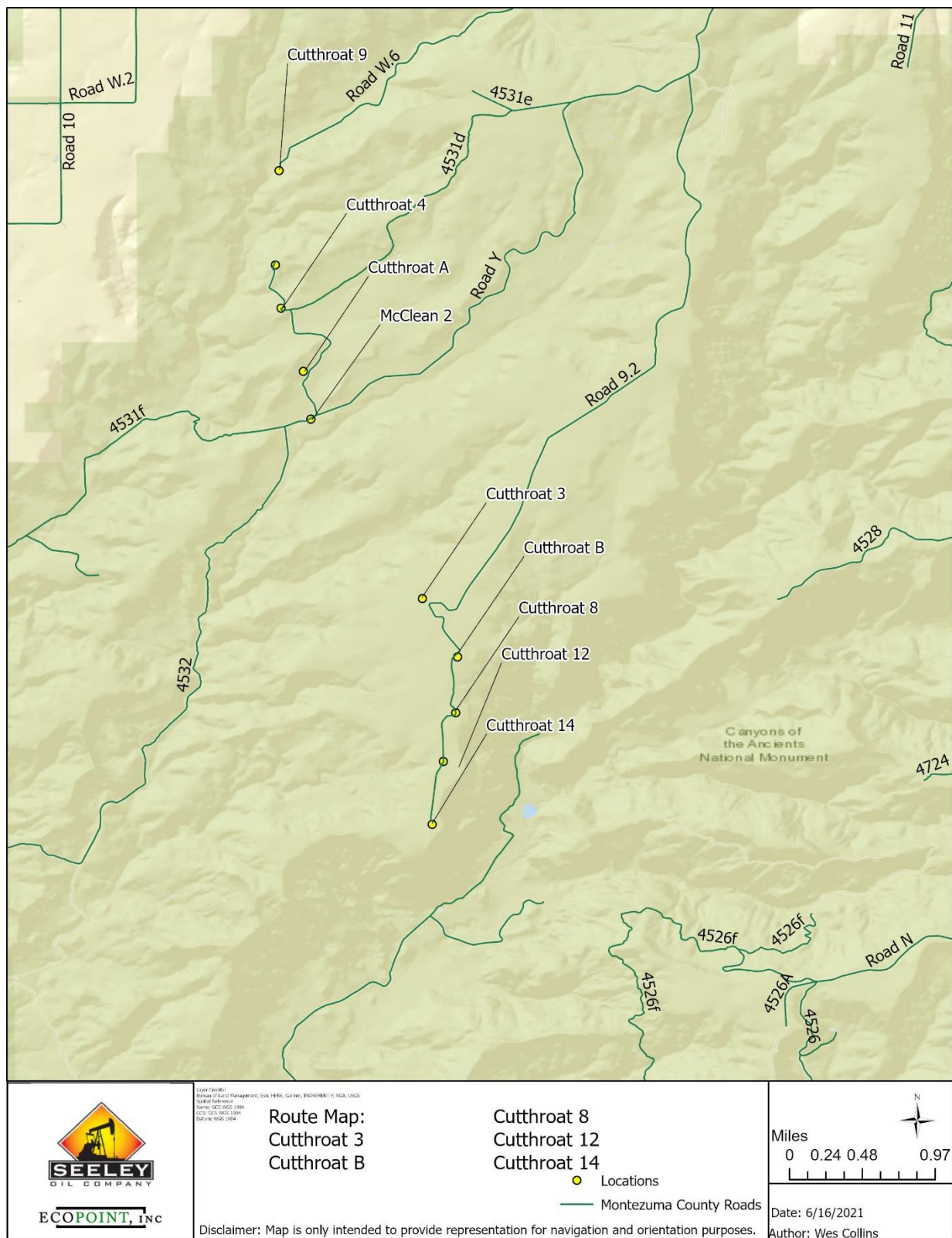
## Appendix A-Route Maps





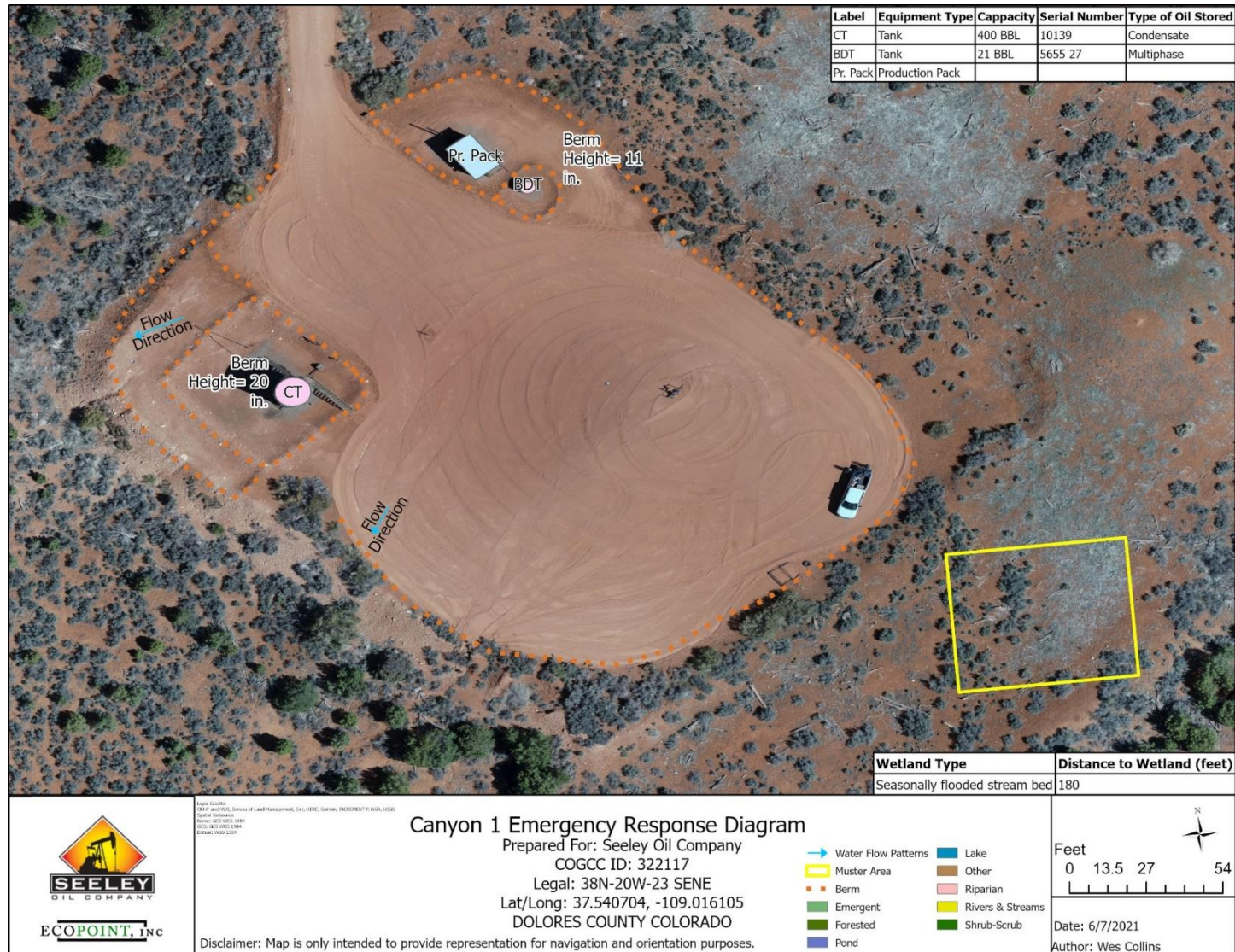




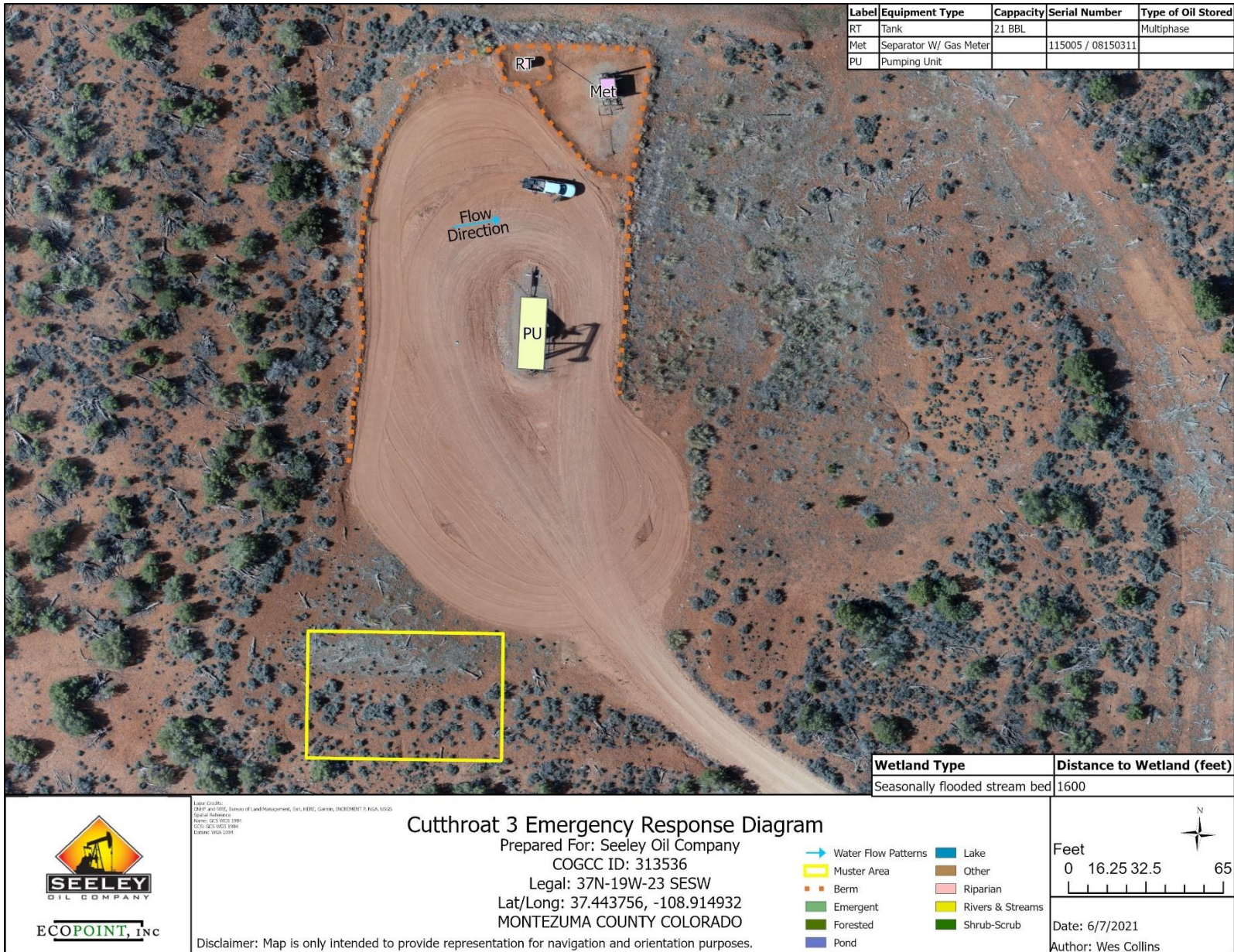




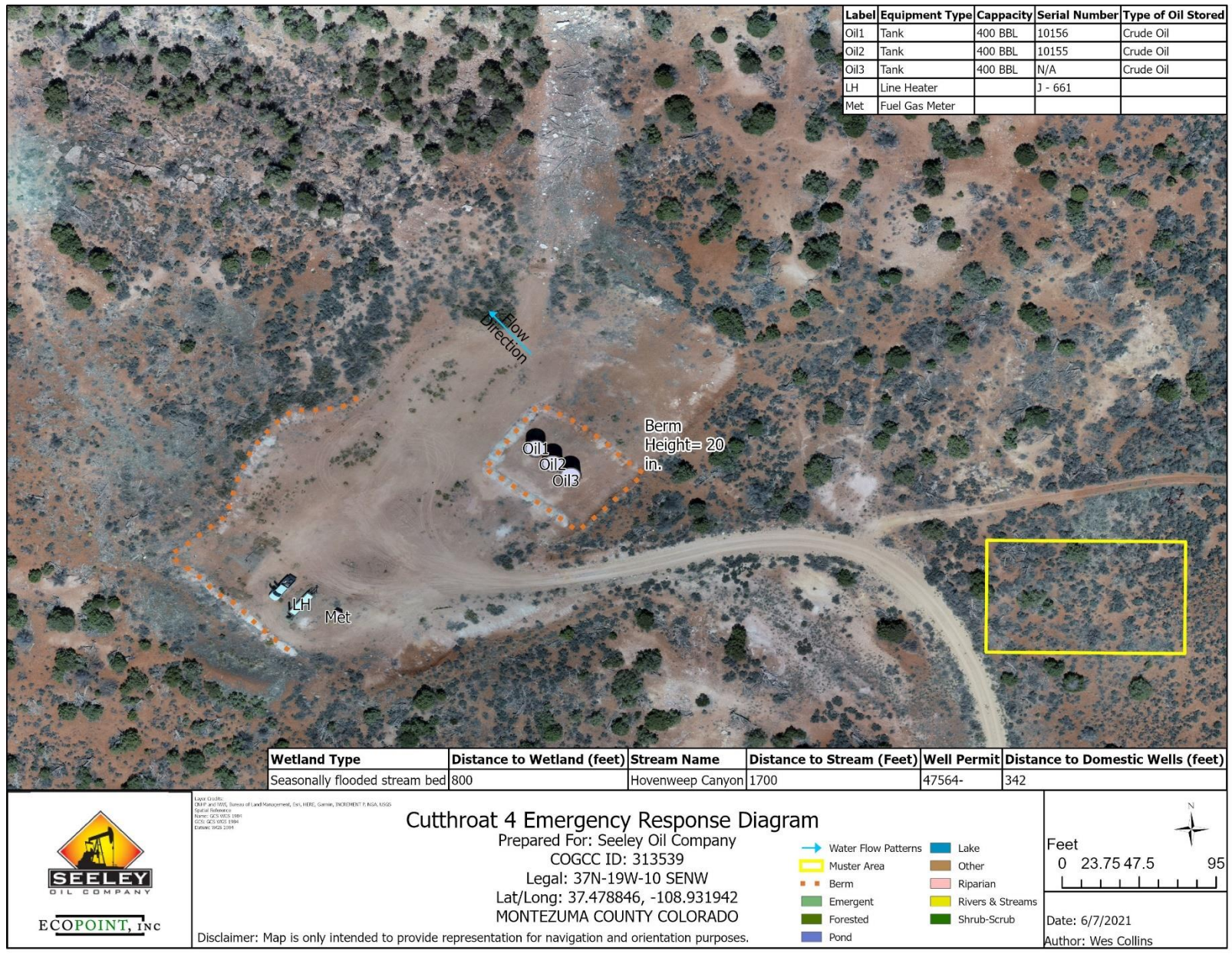
## Appendix B- Facility Maps











### Cutthroat 4 Emergency Response Diagram

Prepared For: Seeley Oil Company  
 COGCC ID: 313539  
 Legal: 37N-19W-10 SENW  
 Lat/Long: 37.478846, -108.931942  
 MONTEZUMA COUNTY COLORADO

Disclaimer: Map is only intended to provide representation for navigation and orientation purposes.





