

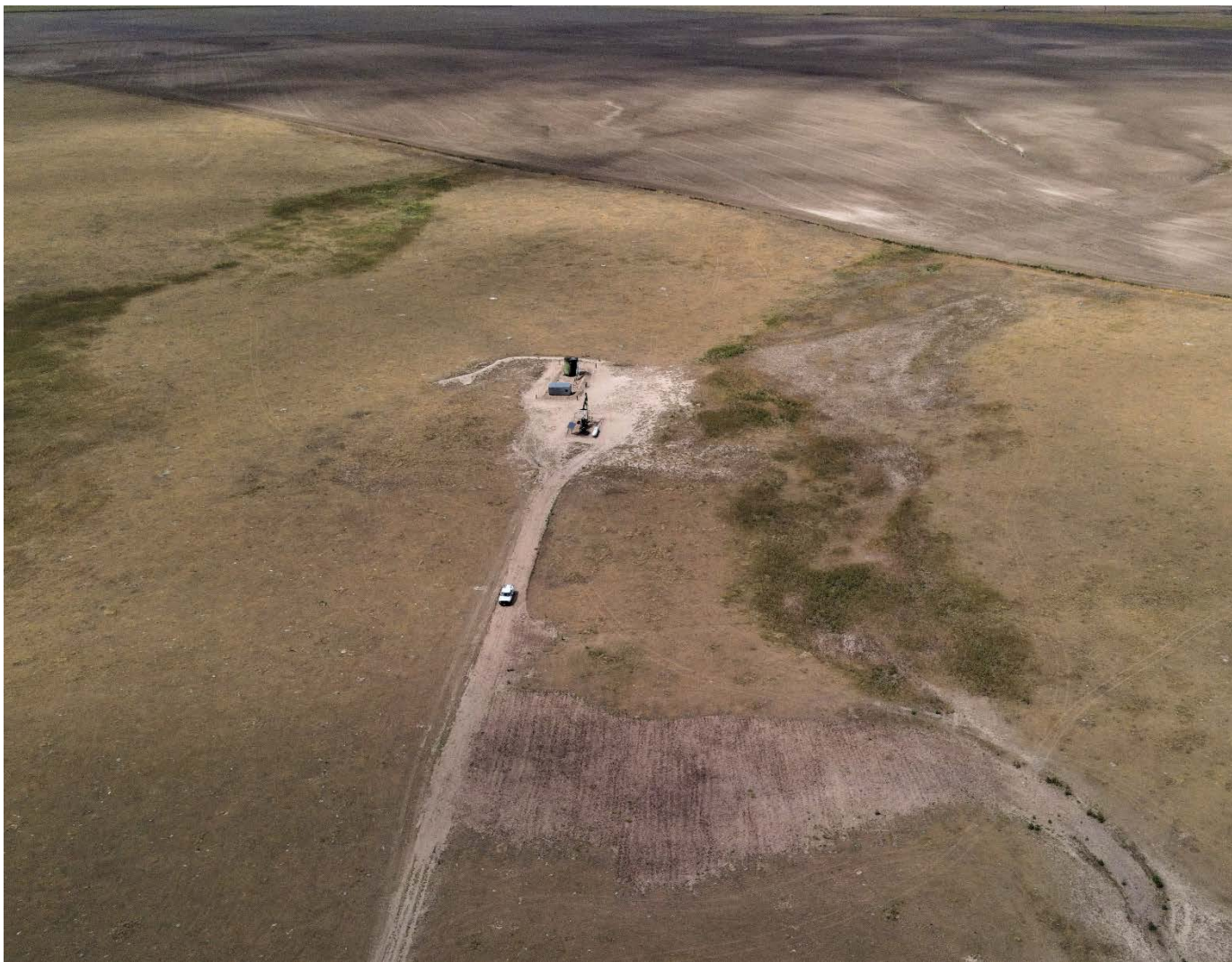
Location Name: Red Lady 1-36 Location ID/API #: Spill 480038



Location Name: Red Lady 1-36 Location ID/API #: Spill 480038



Location Name: Red Lady 1-36 Location ID/API #: Spill 480038



COLORADO
Oil & Gas Conservation
Commission
Department of Natural Resources

Location Name: Red Lady 1-36 Location ID/API #: Spill 480038



COLORADO
Oil & Gas Conservation
Commission
Department of Natural Resources

Location Name: Red Lady 1-36 Location ID/API #: Spill 480038



Ripped area where impacted soil was removed.