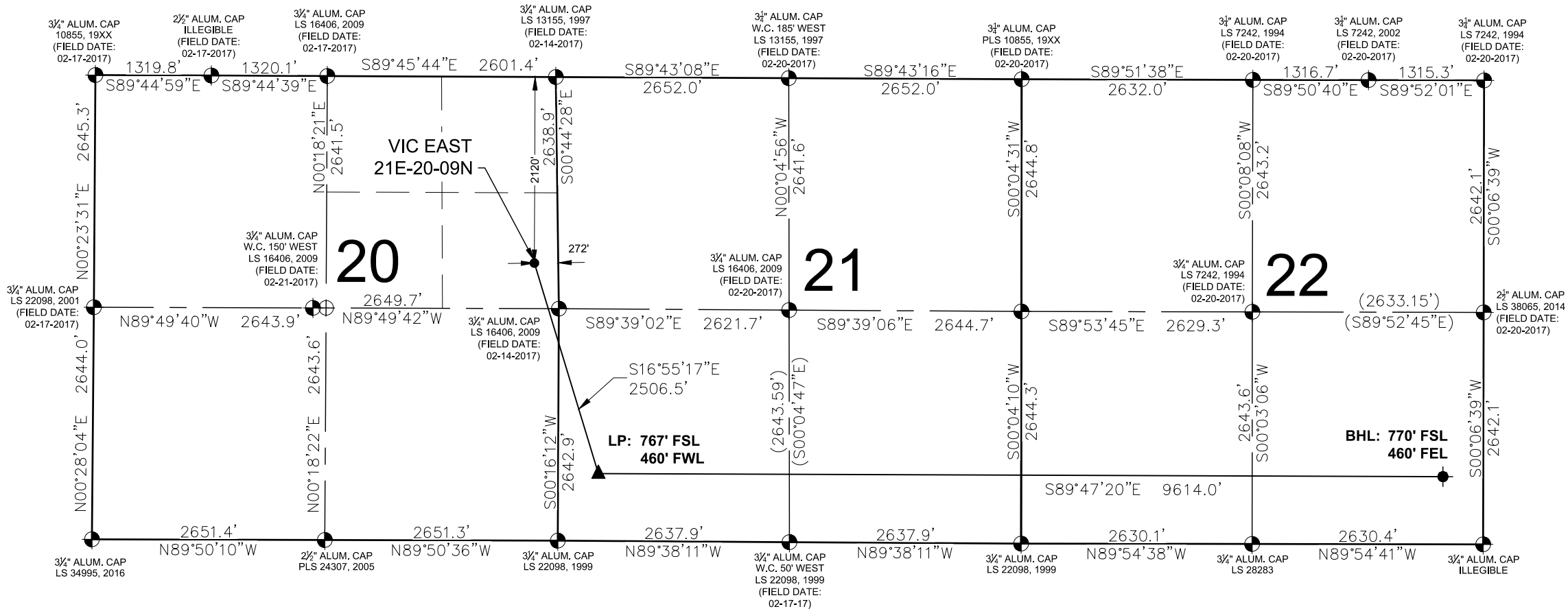


VIC EAST 21E-20-09N
WELL LOCATION EXHIBIT



- NOTES:
1. THIS FIELD SURVEY CONFORMS TO THE MINIMUM STANDARDS SET BY THE COGCC, RULE NO. 215
 2. ALL DISTANCES AND BEARINGS SHOWN HEREON ARE GROUND VALUES AS GPS MEASURED IN THE FIELD, WITH TIES TO WELLS MEASURED PERPENDICULAR TO LINES SHOWN HEREON. THIS LOW DISTORTION PROJECTION (LDP) IS BASED ON THE NORTH AMERICAN DATUM OF 1983, U.S. SURVEY FOOT WITH A LATITUDE ORIGIN OF 40.566967°N, A CENTRAL MERIDIAN LONGITUDE OF 104.88823°W, AND A SCALE FACTOR ON THE CENTRAL MERIDIAN OF 1.000237 (EXACT). THE LDP BASIS OF BEARINGS IS GEODETIC NORTH.
 3. FIELD VERIFICATION OF MONUMENTS COMPLETED WITHIN 1 YEAR OF SIGNATURE DATE, UNLESS OTHERWISE NOTED.

LEGEND

● = EXISTING MONUMENT	▲ = LANDING POINT
○ = CALCULATED POSITION	◆ = EXISTING WELL
● = PROPOSED WELL	LP = LANDING POINT
◆ = BOTTOM HOLE	BHL = BOTTOM HOLE

I, JAMES COMBS, A LICENSED PROFESSIONAL LAND SURVEYOR IN THE STATE OF COLORADO, DO HEREBY STATE TO **EXTRACTION OIL & GAS** THAT THE WELL LOCATION EXHIBIT SHOWN HEREON WAS PREPARED BY ME OR UNDER MY DIRECT SUPERVISION AND THE DRAWING SHOWN HEREON ACCURATELY DEPICTS THE PROPOSED LOCATION OF THE WELL. THIS EXHIBIT MEETS THE REQUIREMENTS OF A GIS LAND POSITION AS DEFINED BY SECTION 38-51-109.3 C.R.S. AND AS SUCH PER SECTION 38-51-109.3 C.R.S. CANNOT BE RELIED UPON TO DETERMINE OWNERSHIP.



JAMES COMBS, PLS 38658
COLORADO LICENSED PROFESSIONAL LAND SURVEYOR
FOR AND ON BEHALF OF P.F.S., LLC
d.b.a. ASCENT GEOMATICS SOLUTIONS

WELL VIC EAST 21E-20-09N TO BE
LOCATED 2120' FNL & 272' FEL

WELL BORE COORDINATES
(NAD83)

SURFACE LOCATION:
GROUND ELEVATION=5008'
LATITUDE:40.561227°N
LONGITUDE:104.908790°W

LANDING POINT:
LATITUDE:40.554646°N
LONGITUDE:104.906167°W

BOTTOM HOLE:
LATITUDE:40.554537°N
LONGITUDE:104.871578°W

WELL NOTES:
BH LOCATION PROVIDED BY CLIENT.
LAND SURFACE USE - IRRIGATED CROP
SEE LOCATION DRAWING FOR ADDITIONAL IMPROVEMENTS
WITHIN 500'

PDOP=1.4
GPS OPERATOR: ROSS TODD

