



**RADIAL CEMENT BOND W/  
VARIABLE DENSITY,  
GAMMA RAY, CCL, TEMP LOG**

Company		Renegade Oil & Gas Company, LLC					
Well		Nordman Estates 10-7					
Field		Caledonia					
County		Elbert					
State		COLORADO					
Location:		API # : 05-039-06477					
Permanent Datum		GL					
Log Measured From		KB					
Drilling Measured From		KB					
SEC 10 TWP 6S RGE 64W		Elevation 6036'					
Other Services		NONE					
Date		17-AUG-2021					
Run Number		One					
Depth Driller		8500'					
Depth Logger		8245'					
Bottom Logged Interval		8246'					
Top Log Interval		Surface					
Open Hole Size		-					
Type Fluid		WATER					
Density / Viscosity		-					
Max. Recorded Temp.		217 DegF					
Estimated Cement Top		-					
Time Well Ready		1700					
Time Logger on Bottom		1804					
Equipment Number		65					
Location		PLATTEVILLE					
Recorded By		H.HILL					
Witnessed By		E.lngve					
Borehole Record		Tubing Record					
Run Number	Bit	From	To	Size	Weight	From	To
Casing Record	Size			Wgt/Ft		Top	Bottom
Surface String	8-5/8"			24#		SURFACE	310'
Prot. String							
Production String	4-1/2"			11.6#		SURFACE	8500'
Liner							


<<< Fold Here >>>

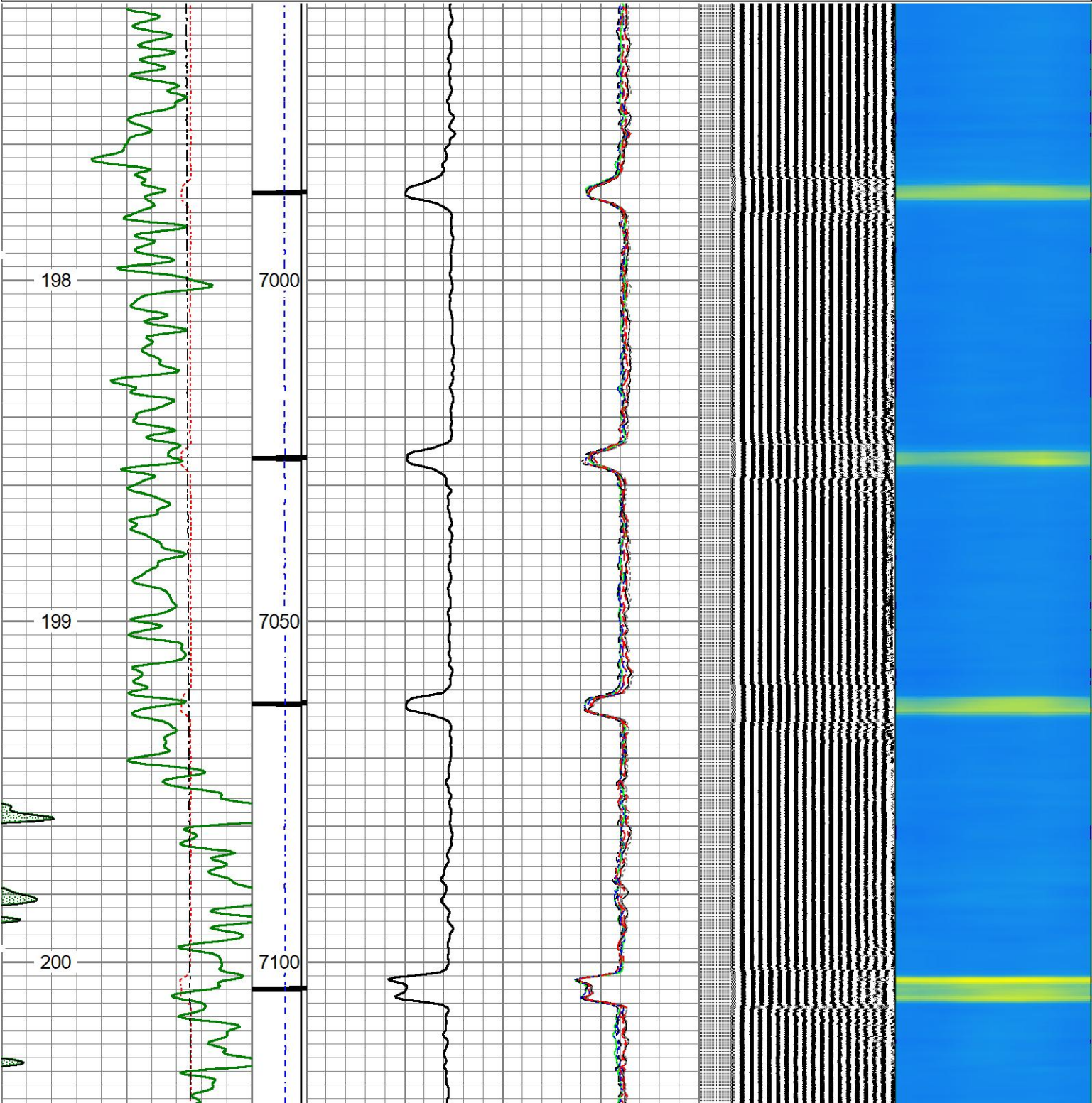
All interpretations are opinions based on inferences from electrical or other measurements and we cannot and do not guarantee the accuracy or correctness of any interpretation, and we shall not, except in the case of gross or willful negligence on our part, be liable or responsible for any loss, costs, damages, or expenses incurred or sustained by anyone resulting from any interpretation made by any of our officers, agents or employees. These interpretations are also subject to our general terms and conditions set out in our current Price Schedule.

Comments

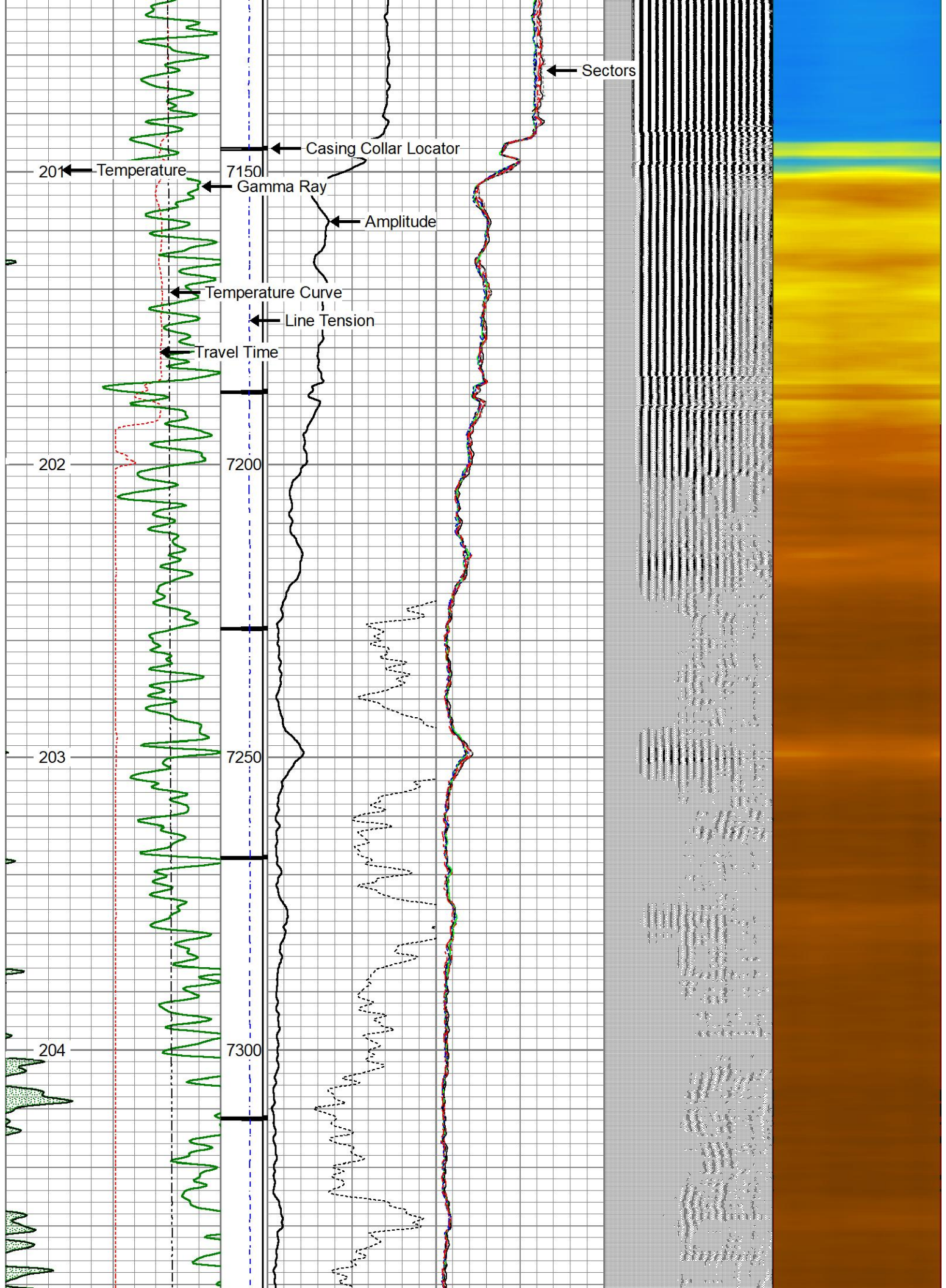
TOOLS RAN AS PER TOOLSTRING DIAGRAM  
TOOL CENTRALIZED VIA 3 X GEMCO CENTRALIZERS  
LOG CORRELATED TO OPEN HOLE GAMMA RAY AT 8194' & 8156'  
TAGGED RBP AND PICKED UP AT 8246'

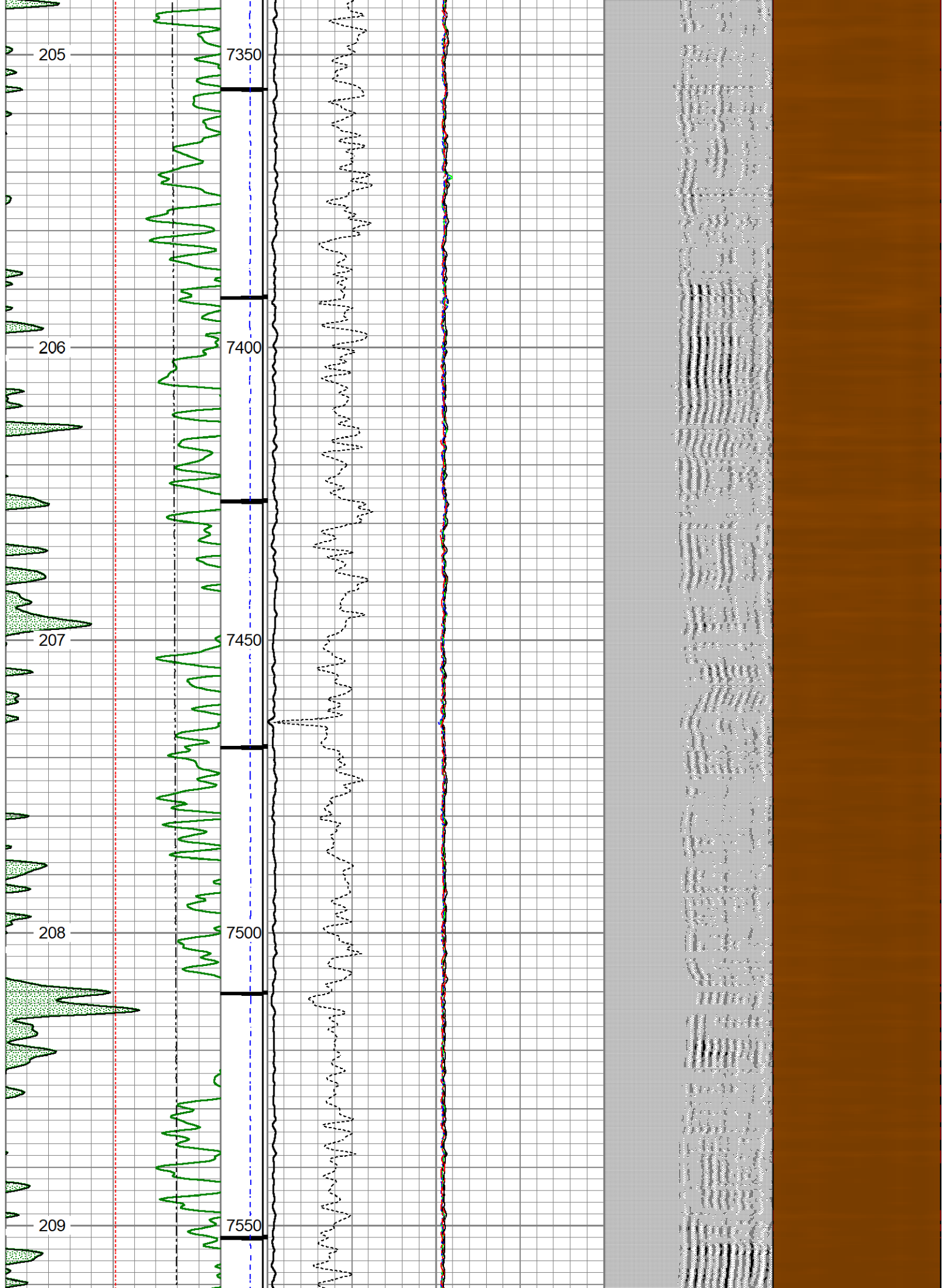
THANK YOU FOR USING KLX ENERGY SERVICES!

Database File		gmt nordman estates 10-7 rcbl 081721.db												
Dataset Pathname		pass15												
Presentation Format		rcbl_hh												
Dataset Creation		Tue Aug 17 17:58:34 2021												
Charted by		Depth in Feet scaled 1:240												
400	Travel Time (usec)	200	ing Co	0	Amplitude (mV)	100	-5	Sector 1	150	Variable Density		1	Cement Map	8
0	Gamma Ray (GAPI)	150	9 -1		Amplified Amplitude		-5	Sector 2	150	200	(usec)	1200		
50	TEMP (degF)	250	e Tens	0	(mV)	10	-5	Sector 3	150					
TEMP			(lb				-5	Sector 4	150					
(degF)			(2000				-5	Sector 5	150					
							-5	Sector 6	150					
							-5	Sector 7	150					
							-5	Sector 8	150					

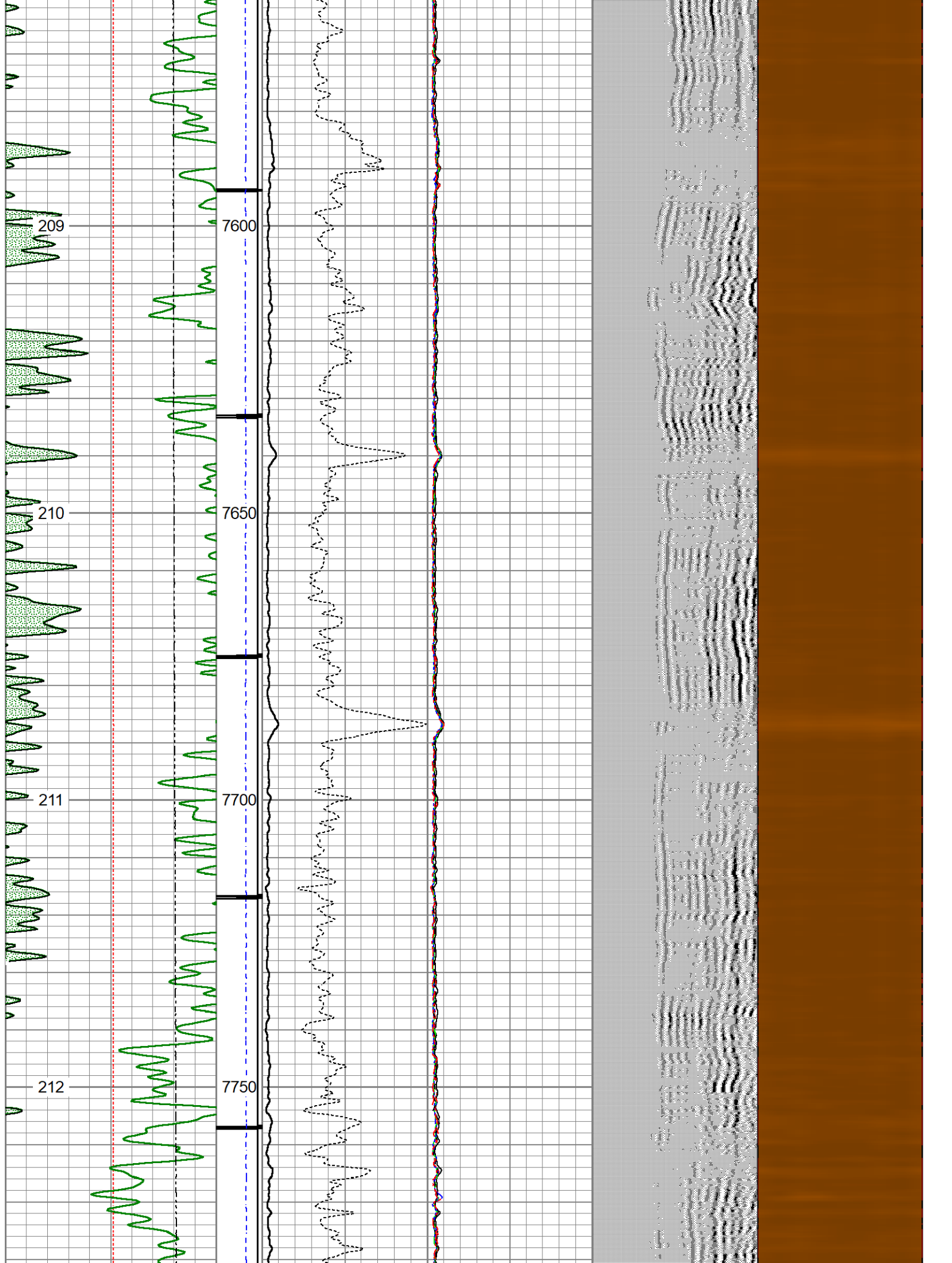


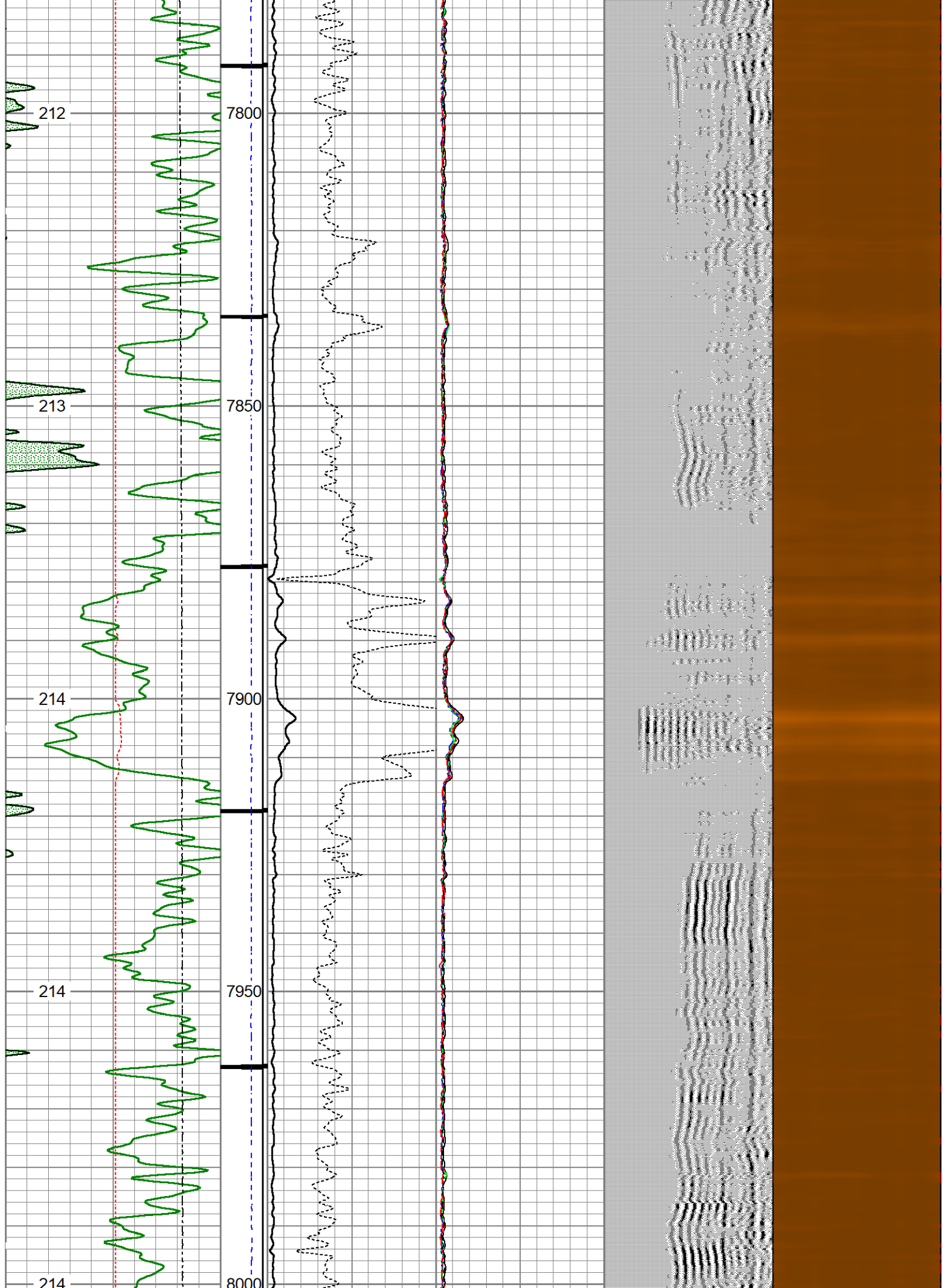


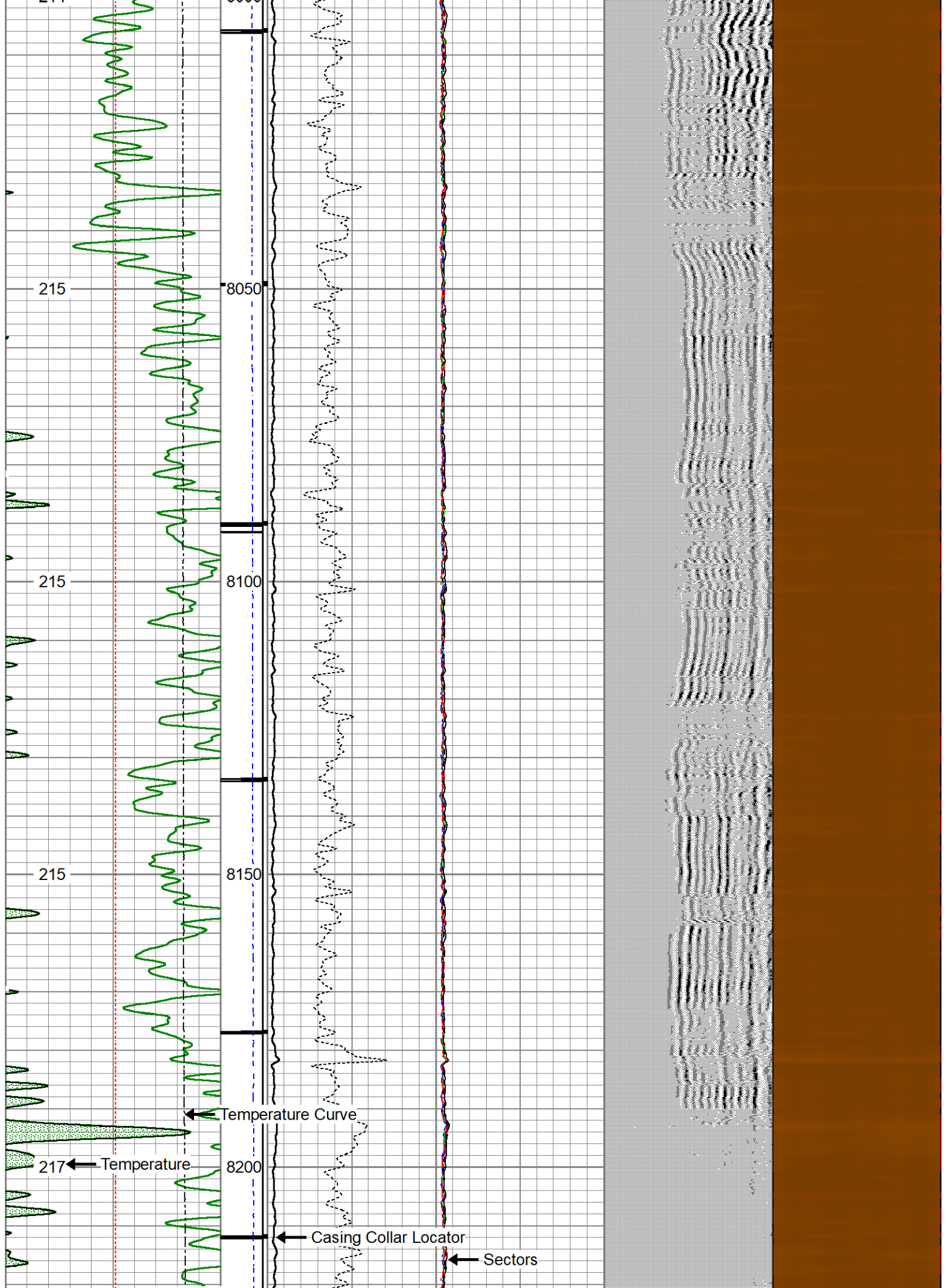




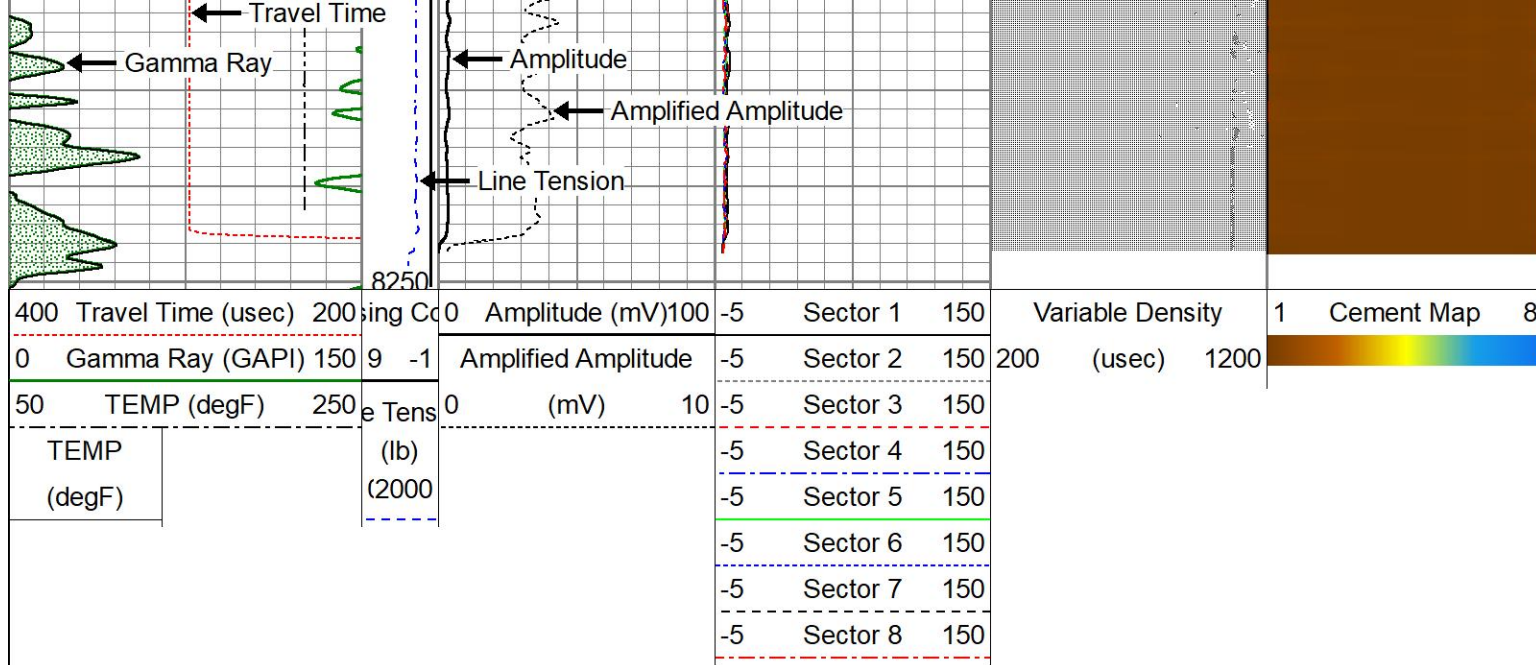








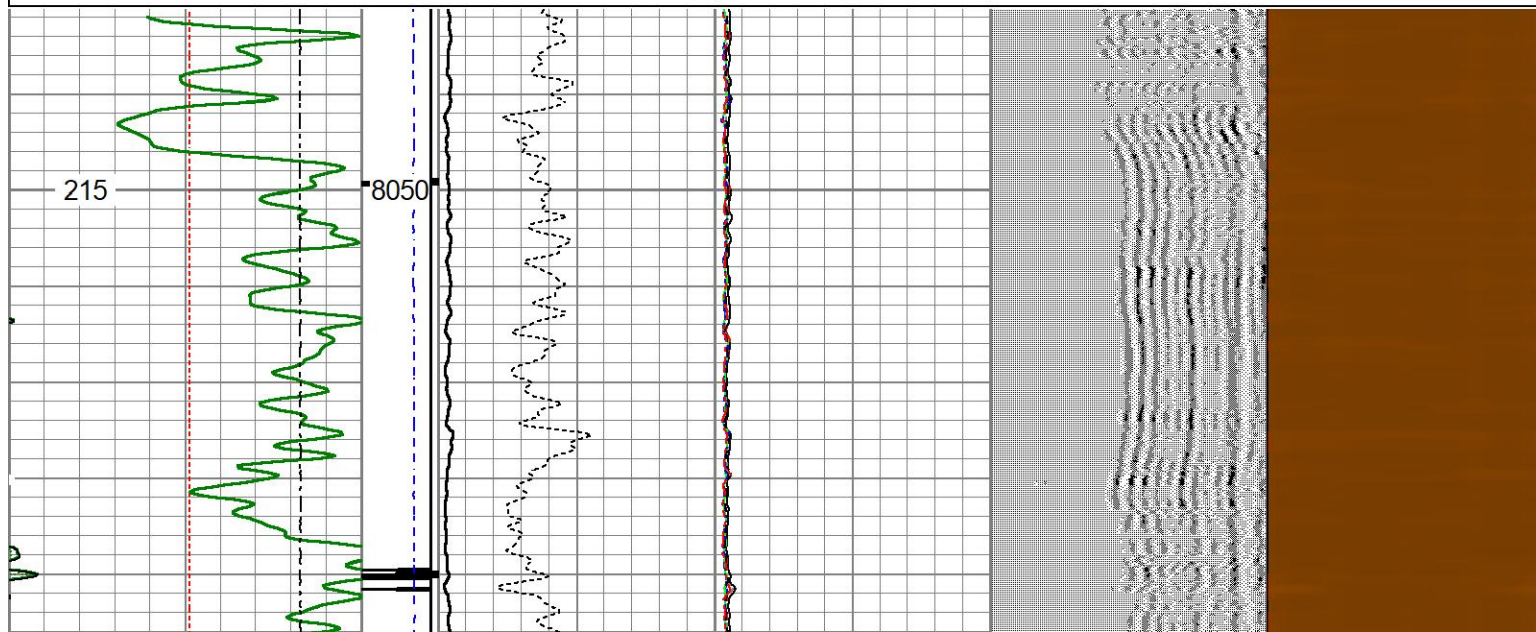
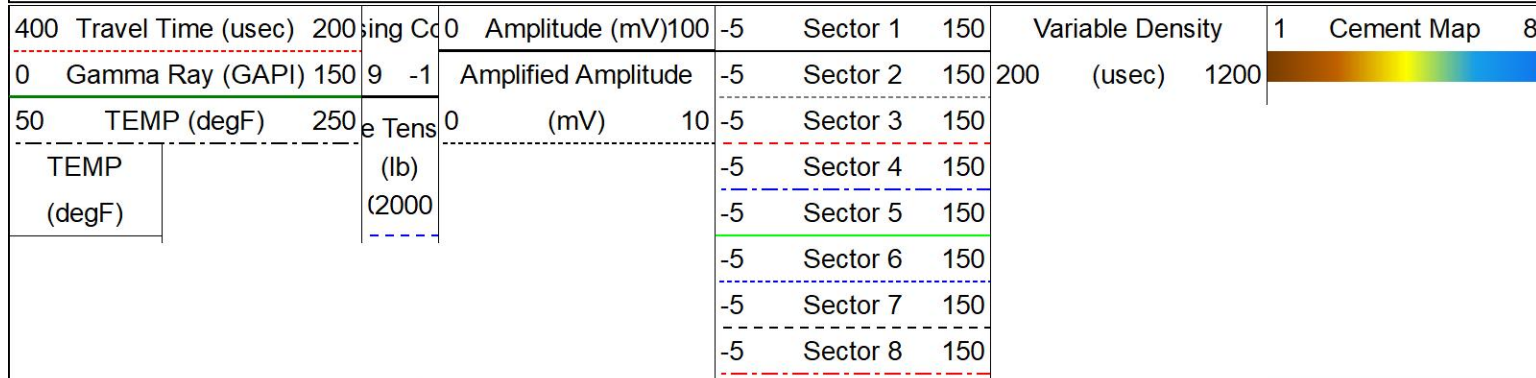




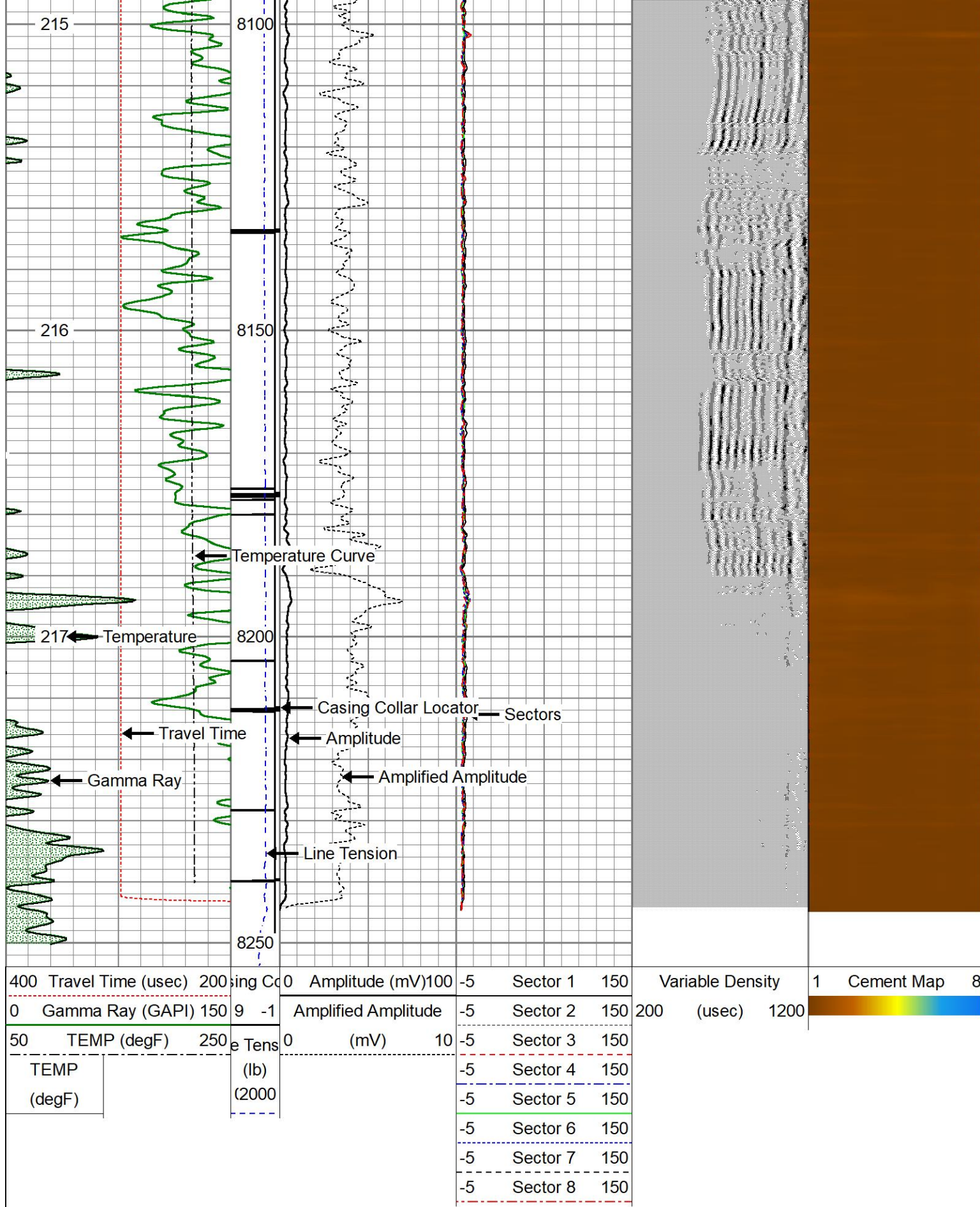
# Repeat Pass

## 0 PSI

Database File	gmt nordman estates 10-7 rcbl 081721.db
Dataset Pathname	pass13
Presentation Format	rcbl_hh
Dataset Creation	Tue Aug 17 17:54:26 2021
Charted by	Depth in Feet scaled 1:240

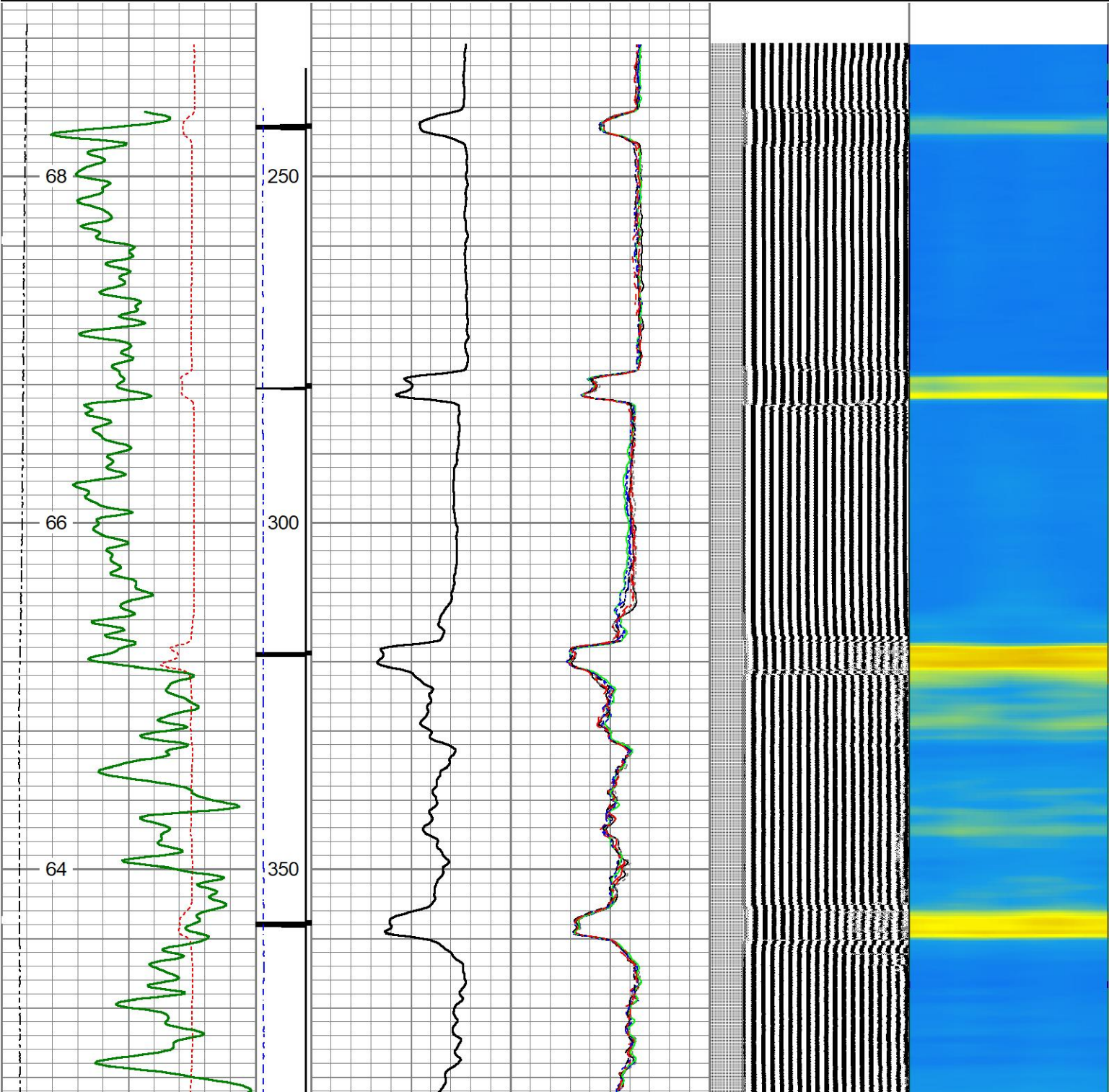




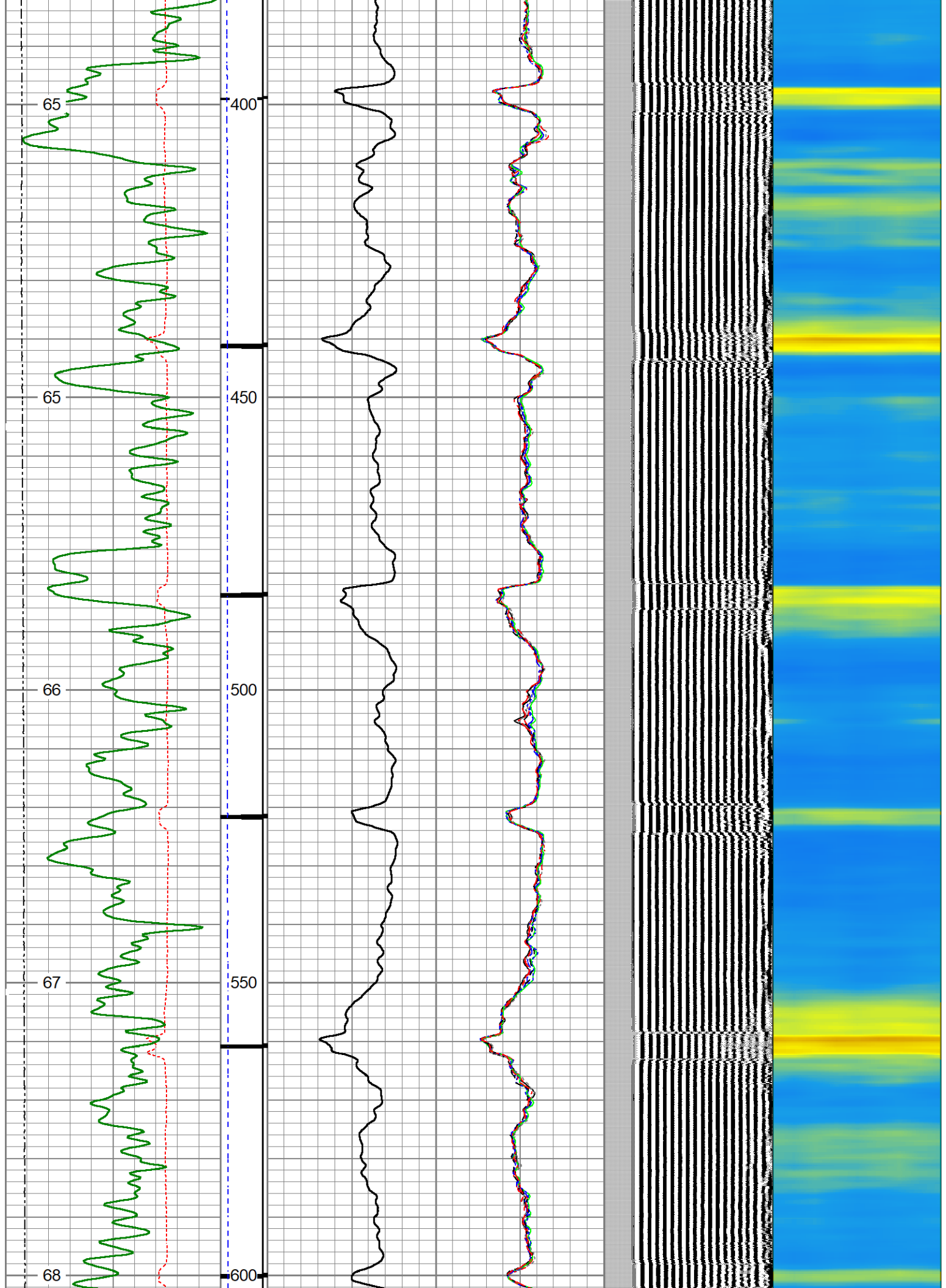


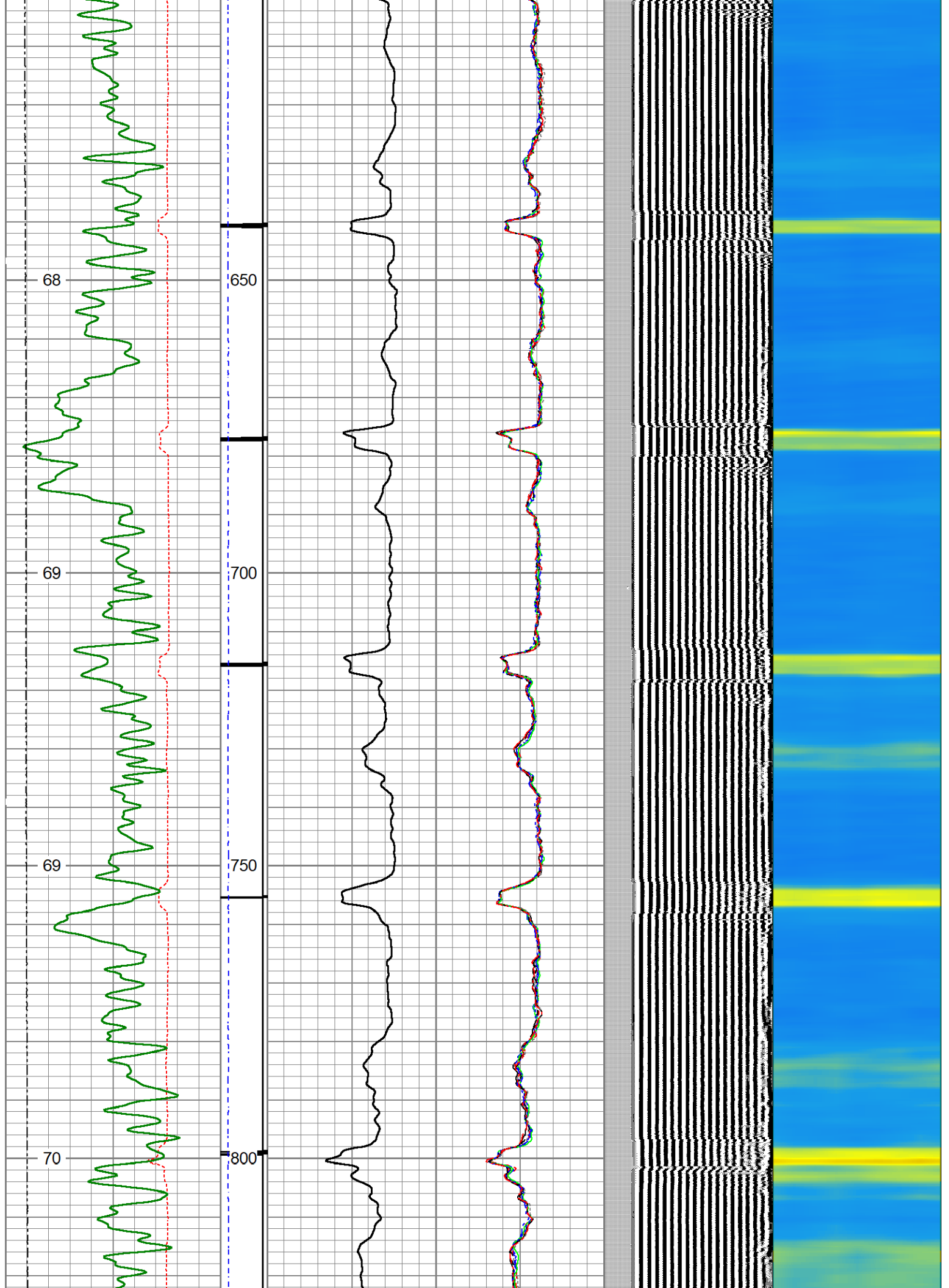


Database File		gmt nordman estates 10-7 rcbl 081721.db												
Dataset Pathname		merge1												
Presentation Format		rcbl_hh												
Dataset Creation		Tue Aug 17 19:15:14 2021												
Charted by		Depth in Feet scaled 1:240												
400	Travel Time (usec)	200	ing Co	0	Amplitude (mV)	100	-5	Sector 1	150	Variable Density		1	Cement Map	8
0	Gamma Ray (GAPI)	150	9 -1		Amplified Amplitude		-5	Sector 2	150			200	(usec)	1200
50	TEMP (degF)	250	e Tens	0	(mV)	10	-5	Sector 3	150					
TEMP			(lb)				-5	Sector 4	150					
(degF)			(2000				-5	Sector 5	150					
							-5	Sector 6	150					
							-5	Sector 7	150					
							-5	Sector 8	150					

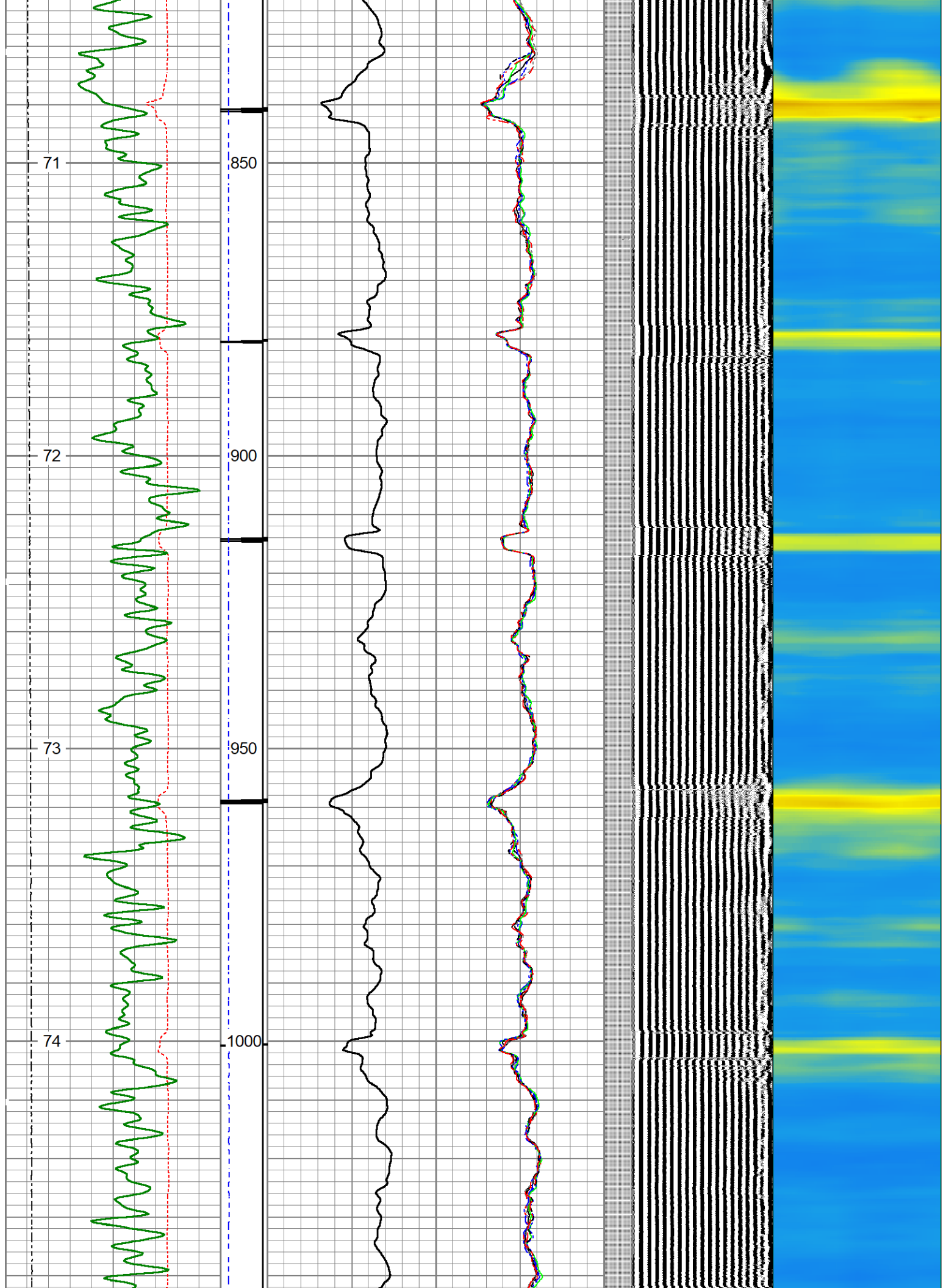


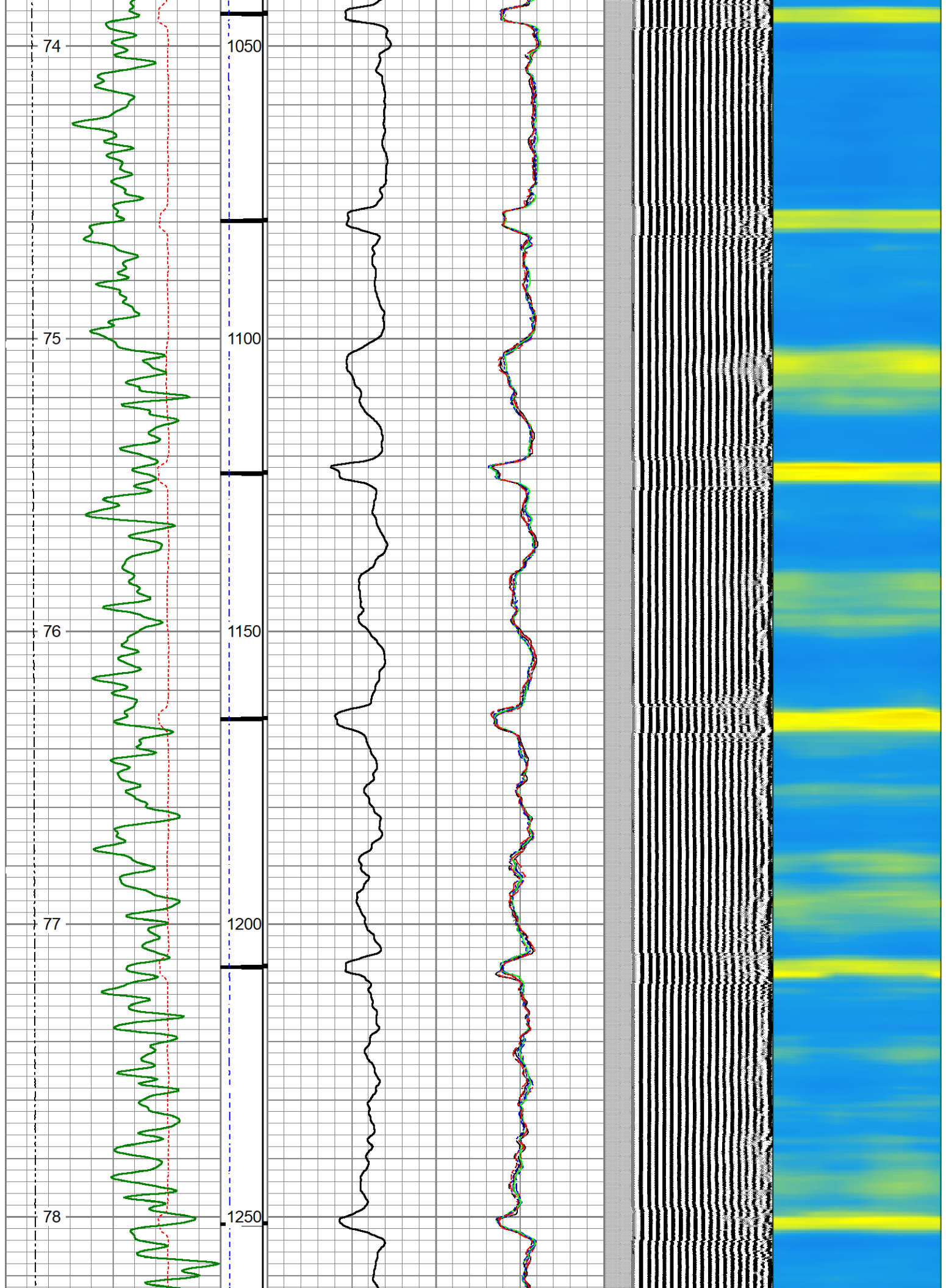




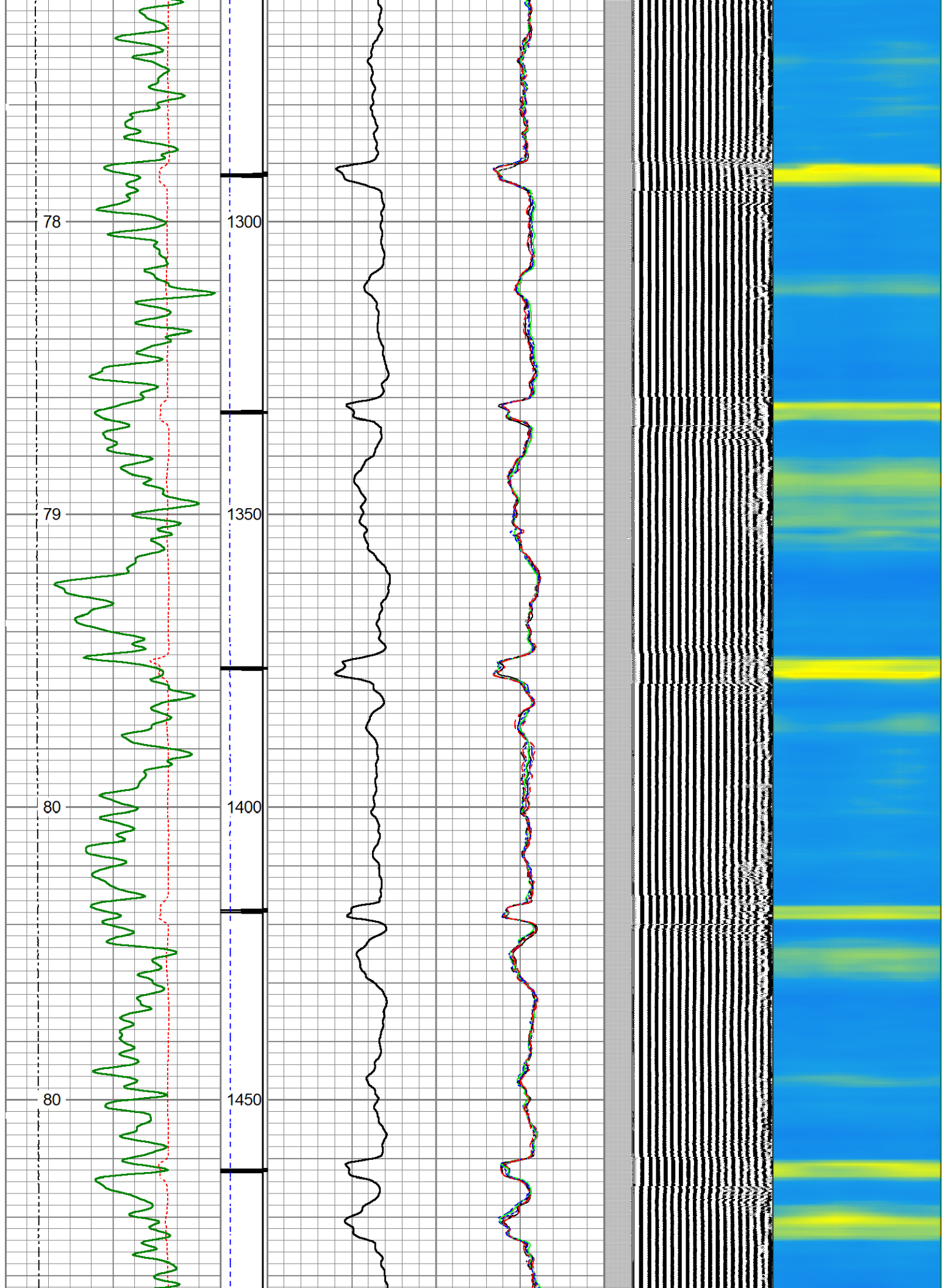


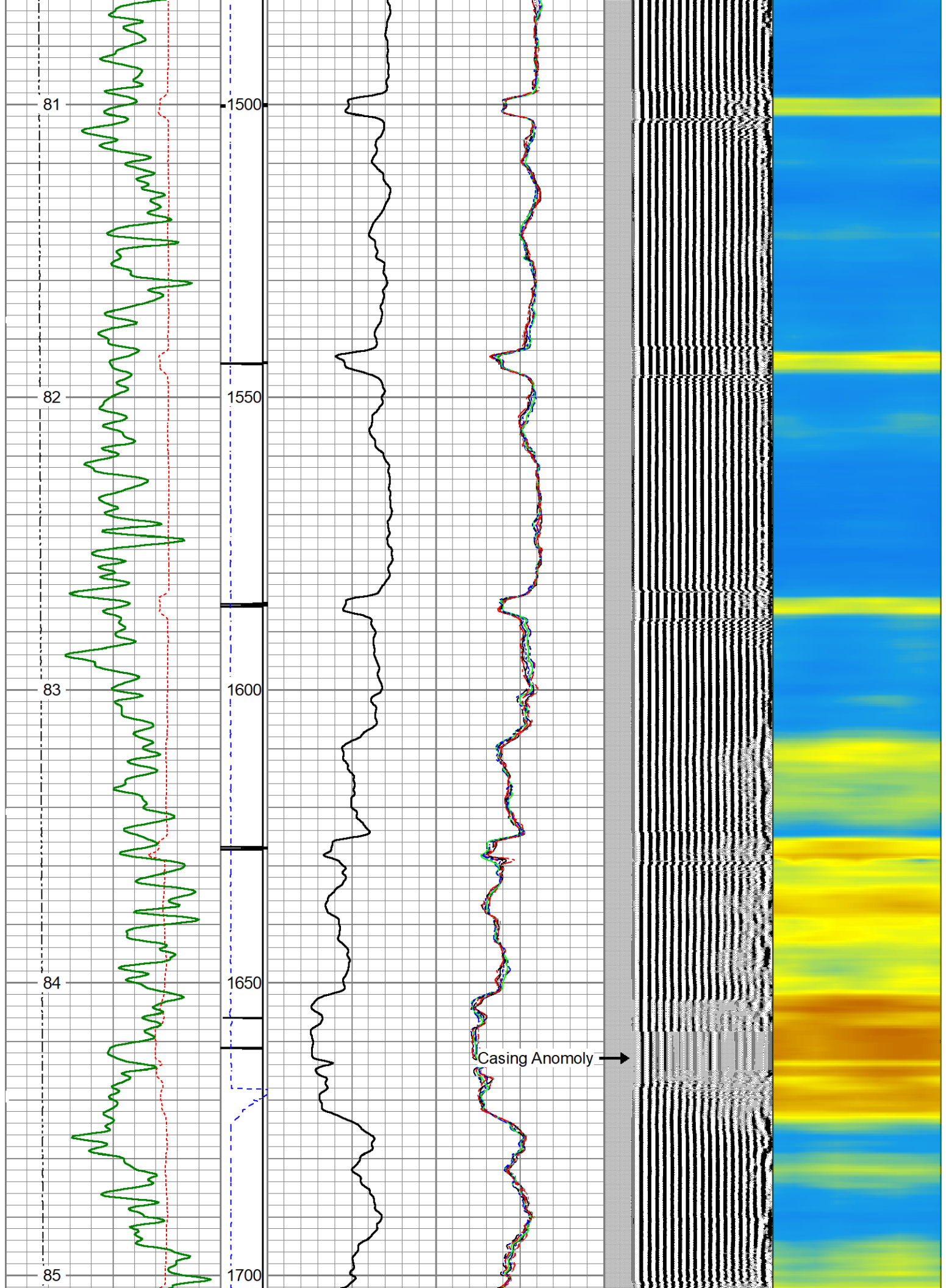




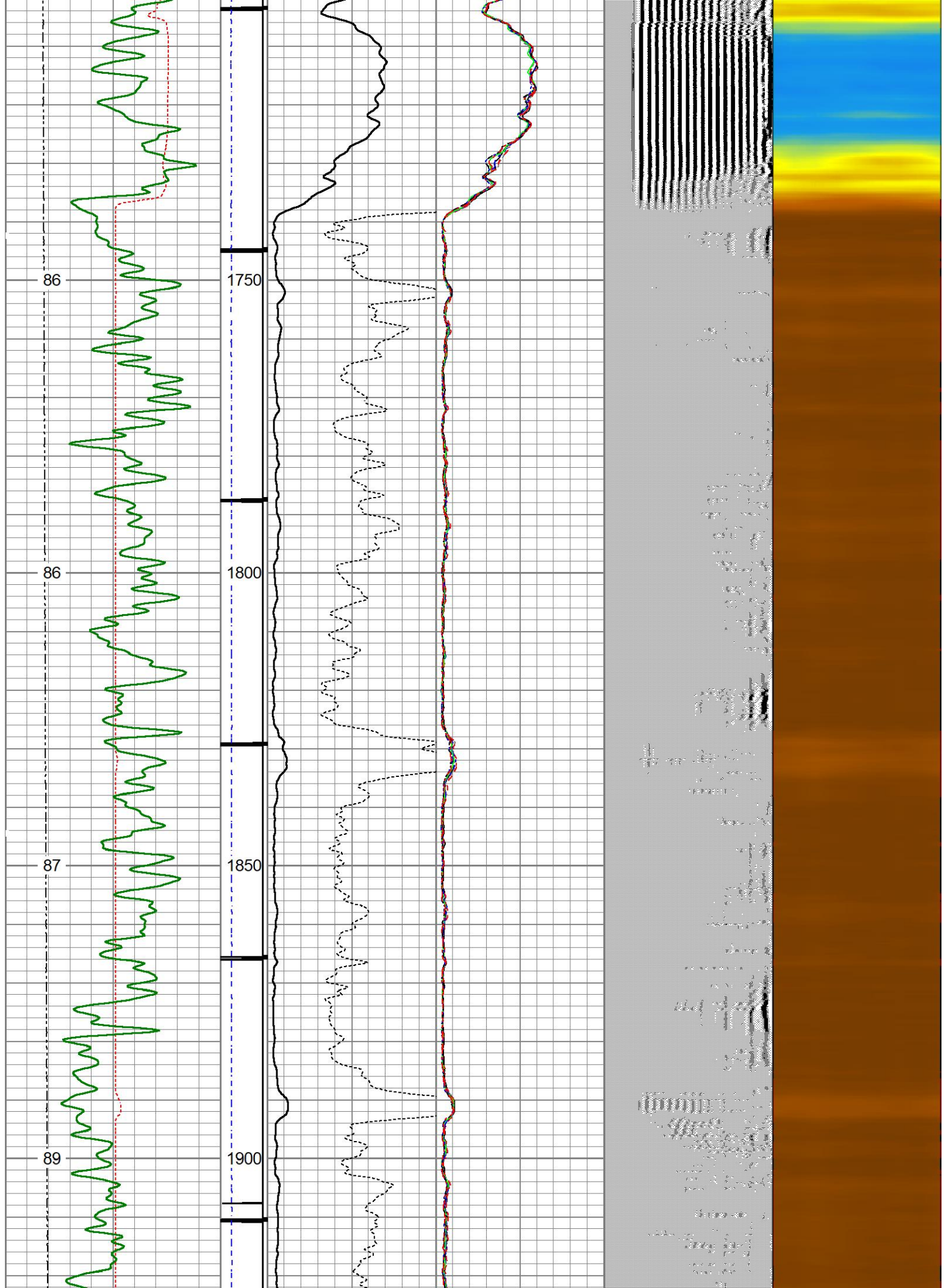




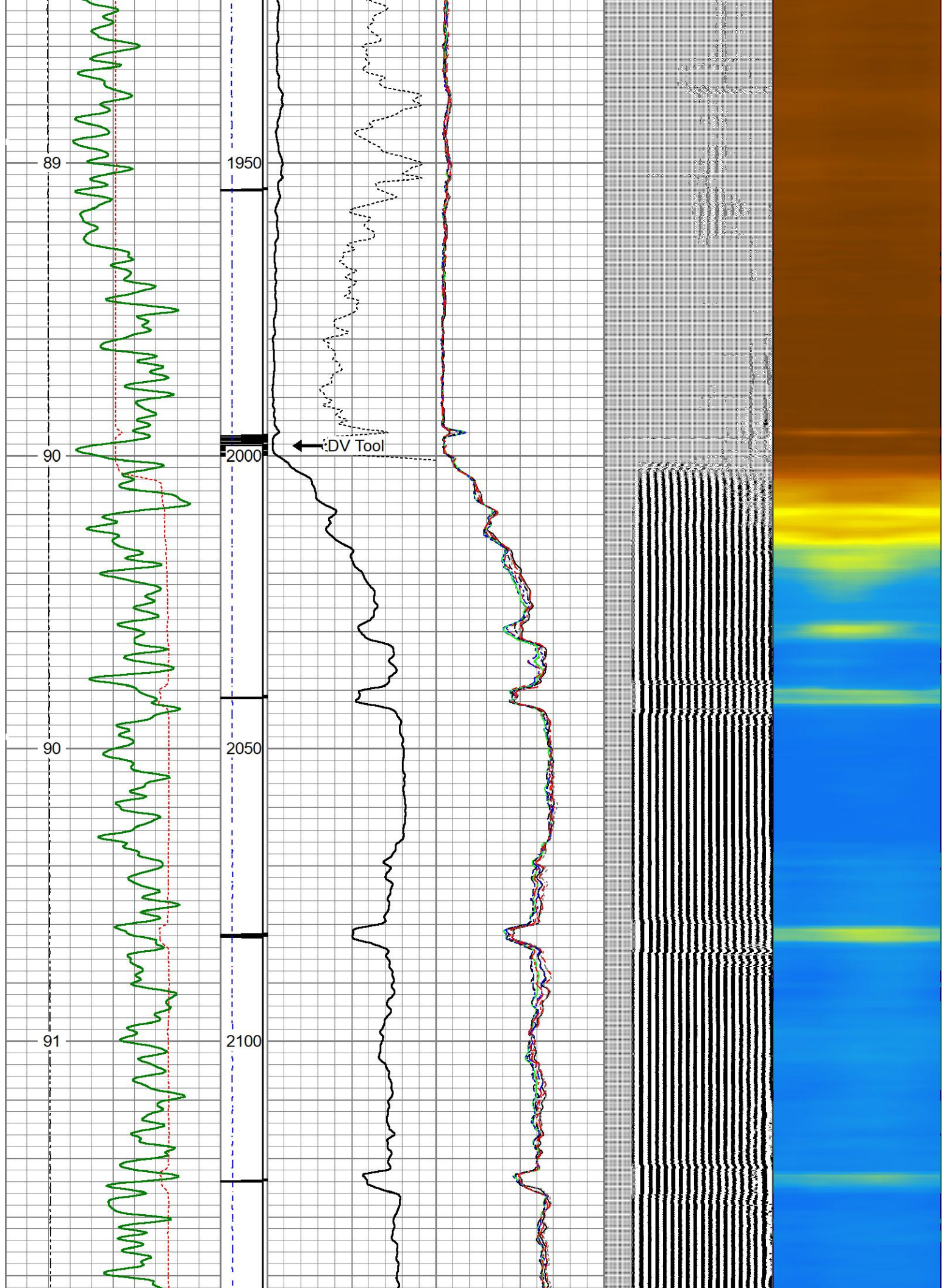




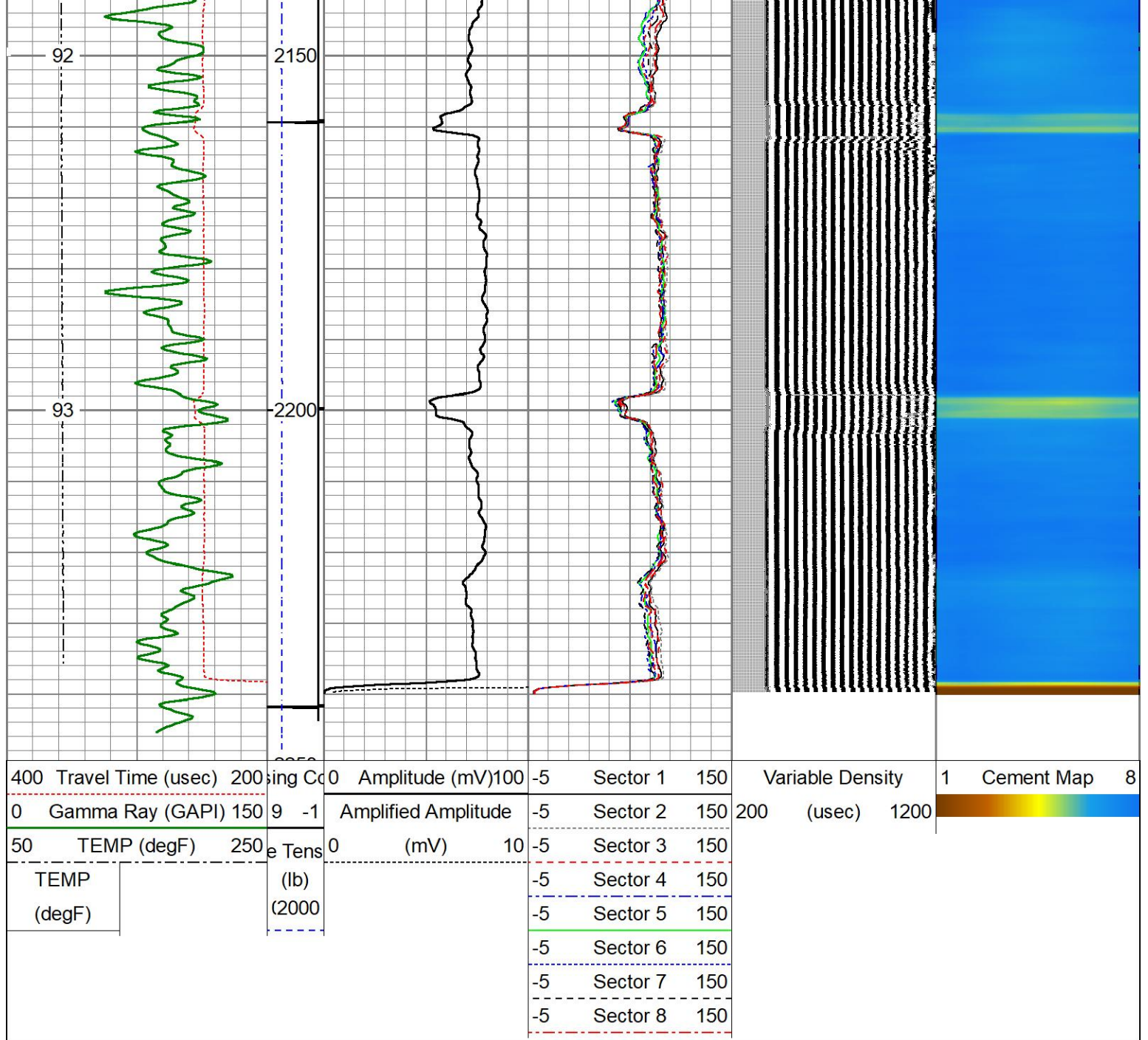












Calibration Report						
Database File	gmt nordman estates 10-7 rcbl 081721.db					
Dataset Pathname	pass18					
Dataset Creation	Tue Aug 17 18:37:47 2021					
Gamma Ray Calibration Report						
Type / Serial:			Probe275dig / 080829			
SHOP CALIBRATION		Wed Sep 23 10:09:42 2020				
	Counts/Sec.	Gain	Offset	Jig	Units	
Background	0.0				cps	
Calibrator	1.0				cps	
		0.8000			GAPI/cps	
PRIMARY VERIFICATION						
Background	0.0				cps	
Calibrator	0.0				cps	
Difference				0.0	GAPI	

Difference

0.0

GAPI

## BEFORE SURVEY VERIFICATION

Background	0.0		cps
Calibrator	0.0		cps
Difference		0.0	GAPI

## AFTER SURVEY VERIFICATION

Background	0.0		cps
Calibrator	0.0		cps
Difference		0.0	GAPI

## Segmented Cement Bond Log Calibration Report

Serial Number: FW1409-41  
Tool Model: Probe 2.75 Radii W/Temp

Calibration Casing Diameter: 5.500 in  
Calibration Depth: 4403.567 ft

Master Calibration, performed Tue Aug 17 17:39:35 2021:

	Raw (v)		Calibrated (mv)		Results	
	Zero	Cal	Zero	Cal	Gain	Offset
3'	0.003	0.387	1.000	81.200	208.976	0.332
CAL	0.002	0.546				
5'	0.003	0.310	1.000	81.200	261.201	0.212
SUM						
S1	0.004	0.379	0.000	100.000	266.710	-1.104
S2	0.002	0.380	0.000	100.000	264.369	-0.410
S3	0.000	0.393	0.000	100.000	254.276	-0.019
S4	0.002	0.401	0.000	100.000	250.957	-0.576
S5	0.002	0.404	0.000	100.000	248.431	-0.458
S6	0.002	0.404	0.000	100.000	248.906	-0.568
S7	0.002	0.391	0.000	100.000	257.012	-0.464
S8	0.002	0.373	0.000	100.000	268.996	-0.453


Internal Reference Calibration, performed (Not Performed):

	Raw (v)		Calibrated (v)		Results	
	Zero	Cal	Zero	Cal	Gain	Offset
CAL	0.000	0.000	0.002	0.546	1.000	0.000

Air Zero Calibration, performed Mon Aug 31 16:50:37 2020:

	Raw (v)		Calibrated (v)		Results	
	Zero		Zero		Offset	
3'	0.000		0.000		0.000	
5'	0.000		0.000		0.000	
SUM						
S1	0.000		0.000		0.000	
S2	0.000		0.000		0.000	
S3	0.000		0.000		0.000	
S4	0.000		0.000		0.000	
S5	0.000		0.000		0.000	
S6	0.000		0.000		0.000	
S7	0.000		0.000		0.000	
S8	0.000		0.000		0.000	



Sensor	Offset (ft)	Schematic	Description	Length (ft)	O.D. (in)	Weight (lb)
HeadVolt	15.73		CHD-Titan Titan 1 7/16" GO Cablehead	1.00	1.44	5.00
Temp	12.88					
WVFS8	10.65		RBT-Probe 2.75 Radii W/Temp (FW1409-41) Probe 2.75" Radial with Integral Temperature Sub	9.21	2.75	90.00
WVFS7	10.65					
WVFS6	10.65					
WVFS5	10.65					
WVFS4	10.65					
WVFS3	10.65					
WVFS2	10.65					
WVFS1	10.65					
WVFCAL	10.65					
WVF3FT	10.65					
WVF5FT	9.65					
HEADVOLT	6.40					
CCL	5.44					
GR	1.42		GR-Probe275dig (080829) HT Probe 2 3/4" Gamma CCL	6.40	2.75	57.00

Total Weight: 152.00 lb  
O.D.: 2.75 in



Company	Renegade Oil & Gas Company, LLC		
Well	Nordman 10-7		
Field	Caledonia		
County	Elbert		
State	COLORADO	Country	USA