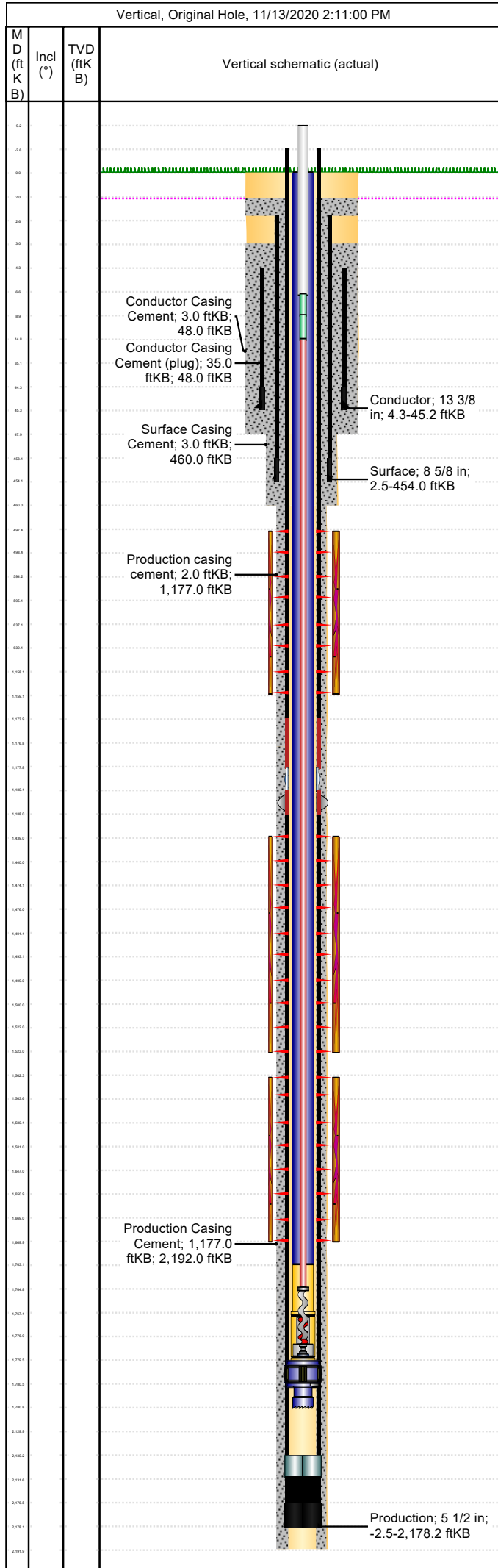


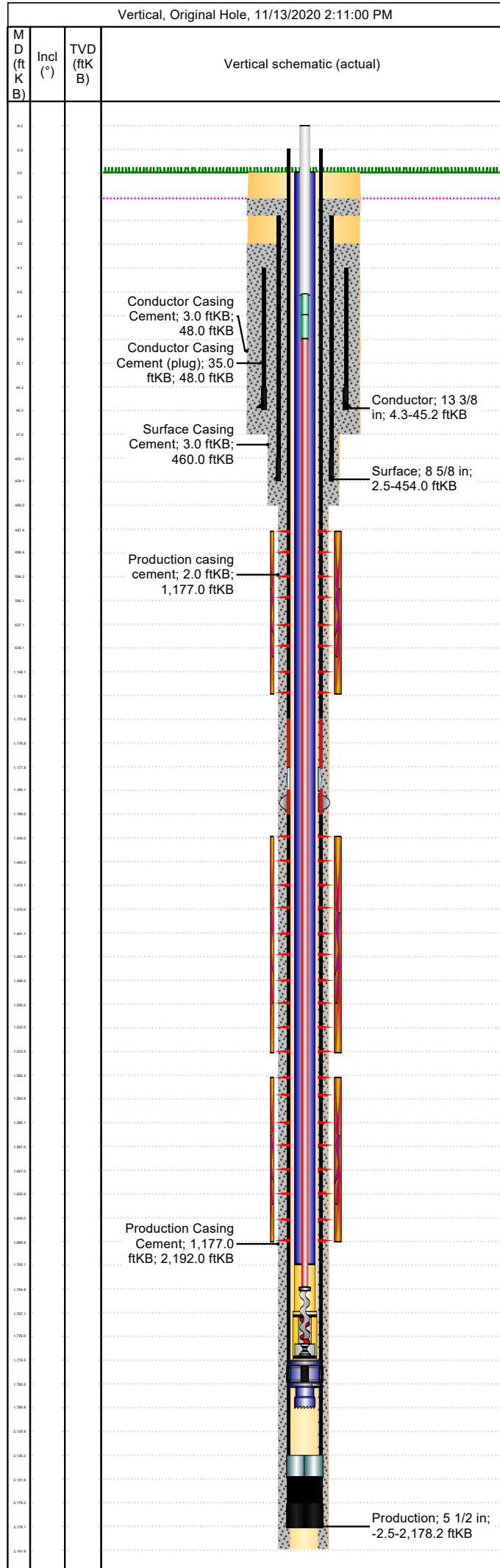
API/UWI 05071095580000	Location T35S-R68W-S01	Field Name Purgatoire River	Permit Number 20081051	State/Province Colorado	Well Configuration Type Vertical
Gr Elev (ft) 8,529.00	Casing Flange Elevation (ft) 8,527.00	KB-Ground Distance (ft) 0.00	KB-Casing Flange Distance (ft) 2.00	Spud Date 1/23/2010 11:30	Rig Release Date 1/26/2010 11:30



Wellbore										
Wellbore Name			Profile Type			Vertical Section Direction (°)				
Section Des		Size (in)		Act Top (ftKB)		Act Btm (ftKB)				
Kick Offs & Key Depths										
Type		Top Depth (ftKB)			Depth Top (TVD) (ftKB)					
Wellhead										
Type										
Des		Make		Model		SN		WP Top (psi)		
Last Mud Check										
Date	Type	Depth (ftKB)	Dens (lb/gal)	Vis (s/qt)	Gel 10s (lb/100ft ²)	Gel 10m (lb/100ft ²)	PV (cP)	YP (lb/100ft ²)		
Casing										
Casing Description Conductor			Run Date 1/23/2010 13:30		Set Depth (ftKB) 45.2		Wellbore Original Hole			
Centralizers 1					Scratchers					
Jts	Item Des	OD (in)	ID (in)	Wt (lb/ft)	Grade	Len (ft)	Top (ftKB)	Btm (ftKB)		
1	Casing Joints	13 3/8	12.62	54.50	J-55	39.90	4.3	44.2		
1	Guide Shoe	13 3/8				1.00	44.2	45.2		
Casing Description Surface			Run Date 1/24/2010 11:00		Set Depth (ftKB) 454.0		Wellbore Original Hole			
Centralizers 2 turbo/3 centr					Scratchers					
Jts	Item Des	OD (in)	ID (in)	Wt (lb/ft)	Grade	Len (ft)	Top (ftKB)	Btm (ftKB)		
10	Casing Joints	8 5/8	7.92	32.00	J-55	450.54	2.5	453.0		
1	Guide Shoe	8 5/8	7.92			1.00	453.0	454.0		
Casing Description Production			Run Date 1/26/2010 05:30		Set Depth (ftKB) 2,178.2		Wellbore Original Hole			
Centralizers 2 turbo/13 centr					Scratchers					
Jts	Item Des	OD (in)	ID (in)	Wt (lb/ft)	Grade	Len (ft)	Top (ftKB)	Btm (ftKB)		
26	Casing Joints	5 1/2	4.95	15.50	J-55	1,176.48	-2.5	1,173.9		
1	Casing Pup Joint	5 1/2	4.95	15.50	J-55	4.00	1,173.9	1,177.9		
1	Stage Collar	5 1/2	4.95	15.50	J-55	2.20	1,177.9	1,180.1		
1	External Casing Packer	5 1/2	4.96	15.50	J-55	8.00	1,180.1	1,188.1		
21	Casing Joints	5 1/2	4.95	15.50	J-55	942.15	1,188.1	2,130.3		
1	Float Collar	5 1/2	0.00	15.50	J-55	1.13	2,130.3	2,131.4		
1	Casing Joints	5 1/2	0.00	15.50	J-55	45.23	2,131.4	2,176.6		
1	Float Shoe	5 1/2	0.00	15.50	J-55	1.55	2,176.6	2,178.2		
Cement: <Description?>										
Cementing Start Date			Cementing End Date			Wellbore				
Evaluation Method			Cement Evaluation Results							
Comment										
Cement Stage: <Description?>										
Top Depth (ftKB)		Bottom Depth (ftKB)		Full Return?		Vol Cement		Top Plug?		
Initial Pump Rate (bbl/min)		Final Pump Rate (bbl/min)		Avg Pump Rate (bbl/min)		Final Pump Pressure (psi)		Plug Bump Pressure (psi)		
Pipe Reciprocated?		Stroke (ft)		Reciprocation Rate (spm)		Pipe Rotated?		Pipe RPM (rpm)		
Tagged Depth (ftKB)		Tag Method		Depth Plug Drilled Out To		Drill Out Diameter (in)		Drill Out Date		
Cement Fluid: <Description?>										
Fluid Type		Fluid Description				Amount (sack)		Class		Volume Pumped (bbl)
Estimated Top (ftKB)		Est Btm (ftKB)		Yield (ft ³ /sack)		Mix H2O Ratio (gal/sack)		Free Water (%)		
Density (lb/gal)			Plastic Viscosity (cP)			Thickening Time (hr)		1st Compressive Strength (psi)		

Well Name: Hill Ranch 01-14

API/UWI 05071095580000	Location T35S-R68W-S01	Field Name Purgatoire River	Permit Number 20081051	State/Province Colorado	Well Configuration Type Vertical
Gr Elev (ft) 8,529.00	Casing Flange Elevation (ft) 8,527.00	KB-Ground Distance (ft) 0.00	KB-Casing Flange Distance (ft) 2.00	Spud Date 1/23/2010 11:30	Rig Release Date 1/26/2010 11:30



Cement Fluid Additives

Add	Type	Conc
-----	------	------