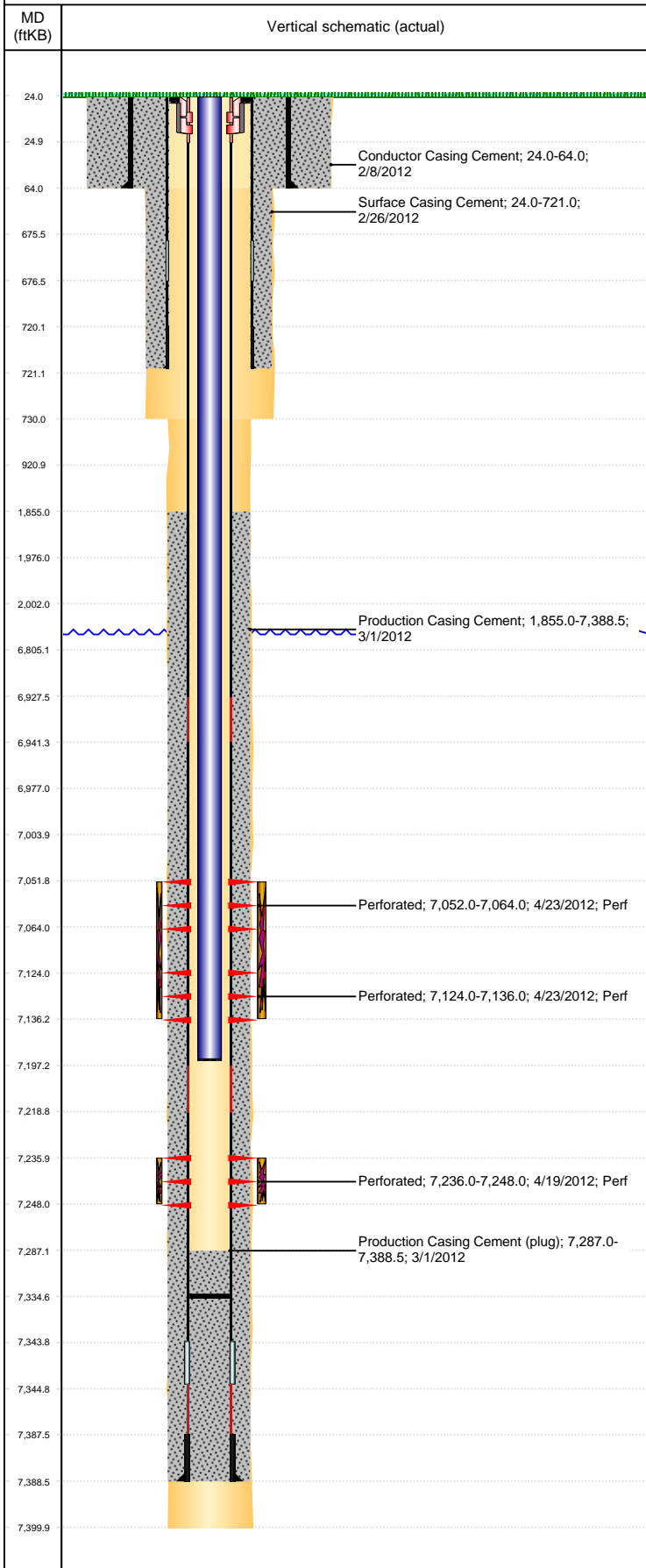


Well Name: PANTHER C11-28D

DEVIATED, ORIGINAL HOLE, 8/17/2021 5:04:06 PM



Well Header

API 05-123-34677	Business Unit DJ BASIN	District 15	Well Config DEVIATED
KB - GL / MSL (ft... 24.00	Spud Date 2/25/2012	P & A Date	Well Production Status PR
SoRT No			

Comment
REQUESTED FINAL DIRECTIONAL SURVEY FROM HALLIBURTON - 2X - NO RESPONSE OR SURVEY AS OF 6/26/2012

Surface Location (Congressional)

Qtr 3	Qtr 4	Section	Twnshp	Twnsh...	Range	Rng E/...	Actual Latitude (°)	Actual Longitude (°)
SE	SE	2	4	N	64	W	40.33600579	-104.51124792

Wellbore Sections

Section Des	Size (in)	Act Top, MD (ftKB)	Act Btm, MD (ftKB)
CONDUCTOR	24	24	64
SURFACE	12 1/4	64	730
PRODUCTION	7 7/8	730	7,400

Casing Strings

Csg Des	Run Date	OD (in)	Wt/Len (lb/ft)	Grade	Top, MD (ftKB)	MD (ftKB)
Conductor	2/8/2012	16	88.20	Q-125	24.0	64.0
Surface	2/26/2012	8 5/8	24.00	J-55	24.0	721.0
Production	2/29/2012	4 1/2	11.60	M-80	24.0	7,388.5

Cement

Des	Start Date	Top (ftKB)	Btm (ftKB)
Conductor Casing Cement	2/8/2012	24.0	64.0
Surface Casing Cement	2/26/2012	24.0	721.0
Production Casing Cement	3/1/2012	1,855.0	7,388.5

Zone Statuses

Zone Name	Status Date	Status	Fluid Type	Job	Prod Method
NIOBRARA	5/7/2012	PR		DRILLING/COMPLETION - ORIGINAL, 2/21/2012...	
CODELL	5/7/2012	PR		DRILLING/COMPLETION - ORIGINAL, 2/21/2012...	

Perforation Data

Linked Zone	Bnch/Stg	Entered Shot Total	Top (ftKB)	Btm (ftKB)	Date
NIOBRARA, ORIGINAL HOLE	B	24	7,052.00	7,064.00	4/23/2012
NIOBRARA, ORIGINAL HOLE	C	24	7,124.00	7,136.00	4/23/2012
CODELL, ORIGINAL HOLE	01	48	7,236.00	7,248.00	4/19/2012

Stimulation Intervals

Zone	Start Date	Top (ftKB)	Btm (ftKB)
NIOBRARA, ORIGINAL HOLE	4/24/2012	7,052.0	7,136.0
	4/24/2012	7,052.0	6,805.0
CODELL, ORIGINAL HOLE	4/23/2012	7,236.0	7,248.0
	4/23/2012	7,236.0	6,805.0

Other In Hole

Run Date	Des	Make	OD (in)	Top (ftKB)	Btm (ftKB)

Logs

Date	Type	Top, MD (ftKB)	Btm, MD (ftKB)
2/29/2012	Caliper/Comp. Density/Neutron/GR/SP/ML	721.0	7,379.0
2/29/2012	DIL/GR/SP/Caliper	720.0	7,399.0
4/17/2012	CBL/CCL/GR	660.0	7,286.0

Plug Back Total Depths

Date	Type	Com	Depth (ftKB)
4/17/2012	FILL	DEPTH LOGGER	7,287.0
6/19/2012	FILL	C/O W/226JTS ALL IN CONE BIT/P/S	7,334.5