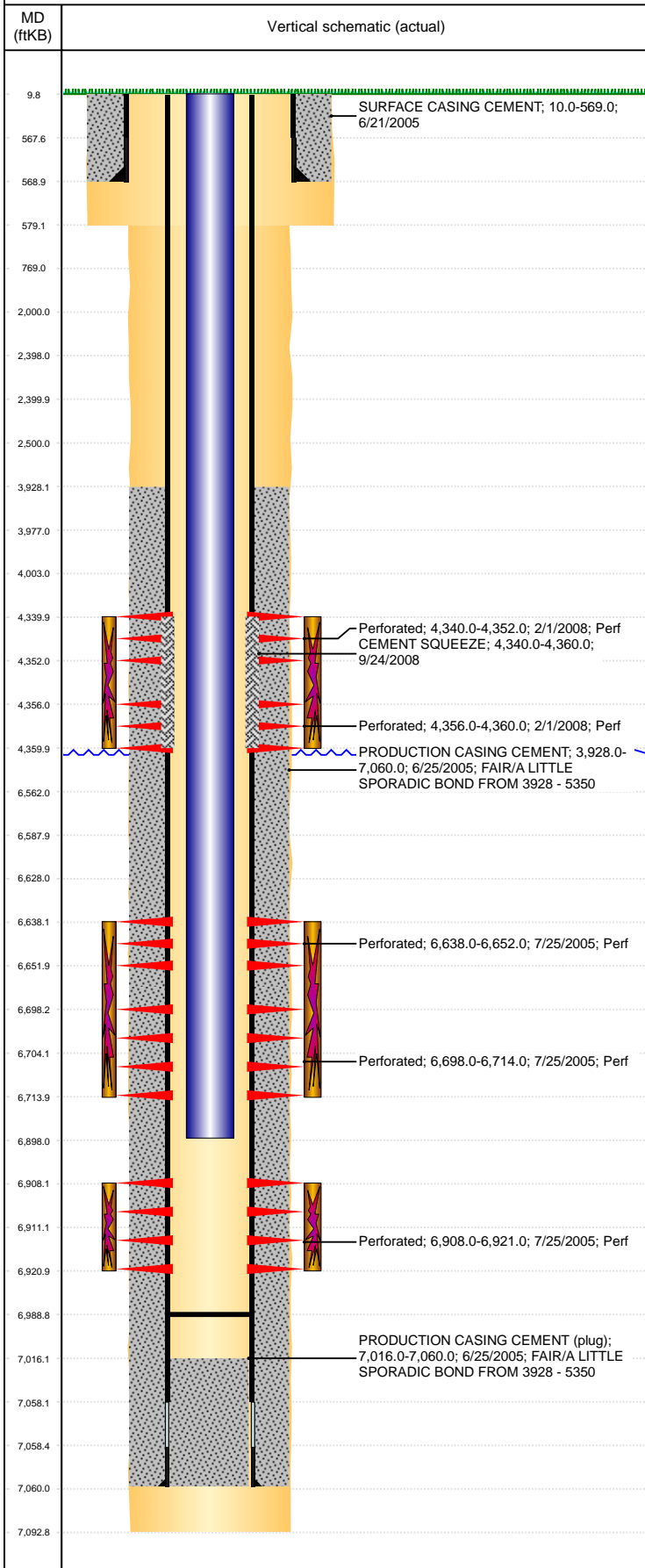


**Well Name: LINDSAY C33-25**

VERTICAL, ORIGINAL HOLE, 8/17/2021 8:59:07 AM



Well Header									
API 05-123-23011		Business Unit DJ BASIN			District 15		Well Config VERTICAL		
KB - GL / MSL (ft... 10.00		Spud Date 6/21/2005		P & A Date		Well Production Status TA (AT SURFACE)			SoRT No
Comment SUSSEX FRAC'D BUT NEVER PRODUCED - CMT SQZ'D 9/24/2008; CDL/NIO PLUG DRILLED OUT 9/26/2008									
Surface Location (Congressional)									
Qtr 3 SE	Qtr 4 SW	Section 33	Twnshp 4	Twnsh... N	Range 64	Rng E/... W	Actual Latitude (°) 40.26513267	Actual Longitude (°) -104.56047170	
Wellbore Sections									
Section Des			Size (in)			Act Top, MD (ftKB)		Act Btm, MD (ftKB)	
SURFACE			12 1/4			10		579	
PRODUCTION			7 7/8			579		7,093	
Casing Strings									
Csg Des		Run Date		OD (in)	Wt/Len (lb/ft)	Grade	Top, MD (ftKB)	MD (ftKB)	
Surface Casing		6/21/2005		8 5/8	24.00		9.8	569.0	
Production		6/25/2005		4 1/2	11.60	M-80	10.0	7,060.0	
Cement									
Des				Start Date		Top (ftKB)		Btm (ftKB)	
SURFACE CASING CEMENT				6/21/2005		10.0		569.0	
PRODUCTION CASING CEMENT				6/25/2005		3,928.0		7,060.0	
CEMENT SQUEEZE				9/24/2008		4,340.0		4,360.0	
Zone Statuses									
Zone Name	Status Date	Status	Fluid Type	Job			Prod Method		
SUSSEX	9/24/2008	AB		RECOMPLETION, 1/30/2008 13:00					
NIOBRARA	2/1/2008	SI		RECOMPLETION, 1/30/2008 13:00					
NIOBRARA	9/26/2008	PR		RECOMPLETION, 1/30/2008 13:00					
CODELL	2/1/2008	SI		RECOMPLETION, 1/30/2008 13:00					
CODELL	9/26/2008	PR		RECOMPLETION, 1/30/2008 13:00					
Perforation Data									
Linked Zone		Bnch/Stg	Entered Shot Total	Top (ftKB)		Btm (ftKB)		Date	
SUSSEX, ORIGINAL HOLE			48	4,340.00		4,352.00		2/1/2008	
SUSSEX, ORIGINAL HOLE			16	4,356.00		4,360.00		2/1/2008	
NIOBRARA, ORIGINAL HOLE			84	6,638.00		6,652.00		7/25/2005	
NIOBRARA, ORIGINAL HOLE			96	6,698.00		6,714.00		7/25/2005	
CODELL, ORIGINAL HOLE			52	6,908.00		6,921.00		7/25/2005	
Stimulation Intervals									
Zone			Start Date		Top (ftKB)		Btm (ftKB)		
SUSSEX, ORIGINAL HOLE			2/14/2008		4,340.0		4,360.0		
NIOBRARA, ORIGINAL HOLE			7/25/2005		6,638.0		6,714.0		
CODELL, ORIGINAL HOLE			7/25/2005		6,908.0		6,921.0		
Other In Hole									
Run Date	Des				Make	OD (in)	Top (ftKB)	Btm (ftKB)	
Logs									
Date		Type				Top, MD (ftKB)		Btm, MD (ftKB)	
6/25/2005		Compensated Density				3,500.0		7,063.0	
6/25/2005		Induction				569.0		7,083.0	
7/14/2005		CBL/CCL/GR				3,700.0		6,999.0	
Plug Back Total Depths									
Date		Type		Com				Depth (ftKB)	
9/23/2008		FILL						4,394.0	
9/29/2008		PLUG REMNANTS		PUSHED PLUG TO 6989'				6,989.0	