

Final Reclamation Inspection

August 4, 2021

Operator: PDC ENERGY INC - 69175

Location ID: 319054

Inspection Document #: 701900029

Weld County, CO

NENE Section 27 T6N R66W

Corey McDonough
Reclamation Contractor, COGCC



COLORADO

**Oil & Gas Conservation
Commission**

Department of Natural Resources

Inspection Photos
Location Name: LEFFLER 1-27
Location ID: 319054

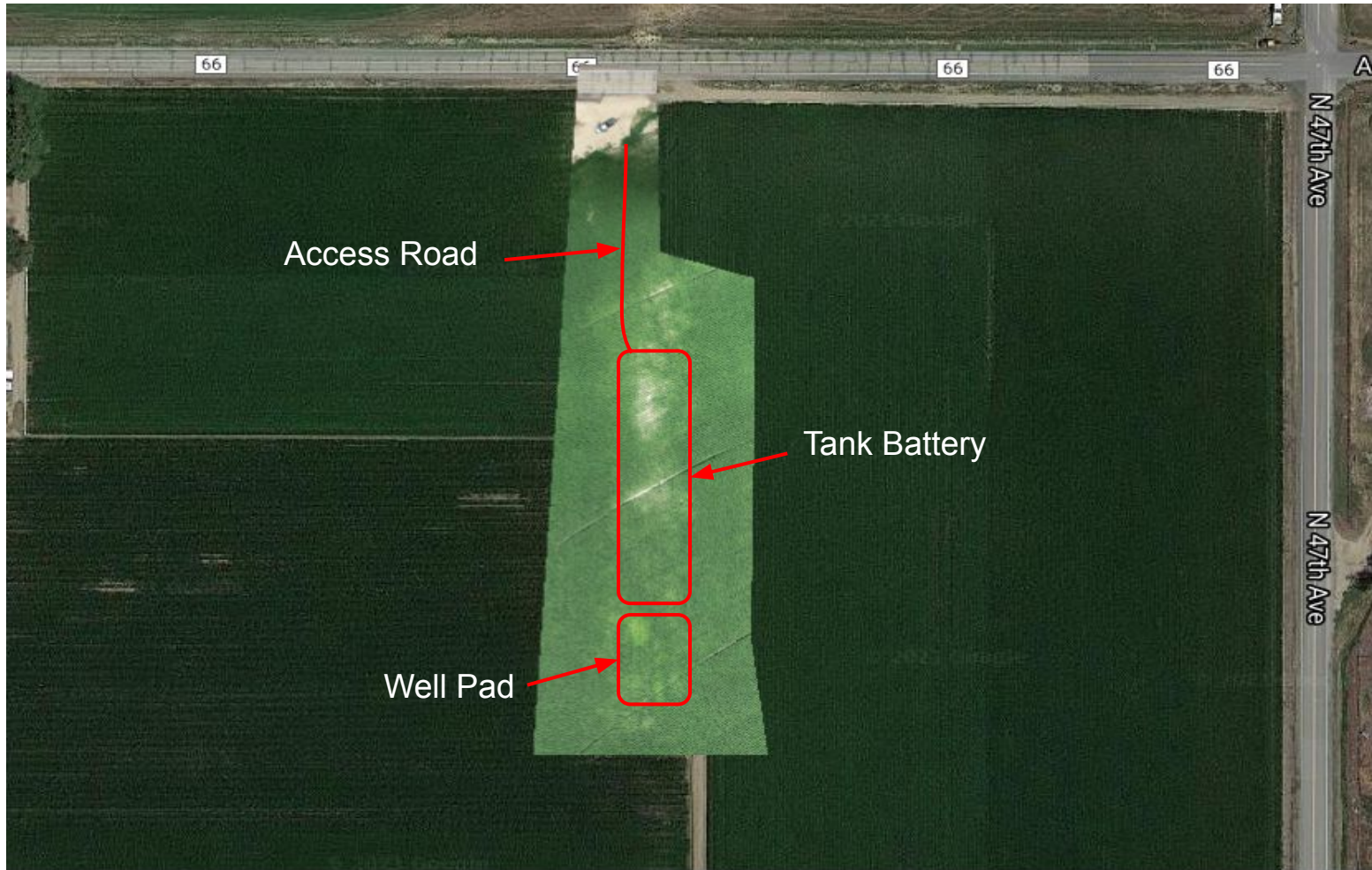


Photo 1. 2019 Imagery with drone map plan overview shows tank battery, well pad and associated access road. See photo 2 for plant elevation model. (north is up)

Inspection Photos
Location Name: LEFFLER 1-27
Location ID: 319054

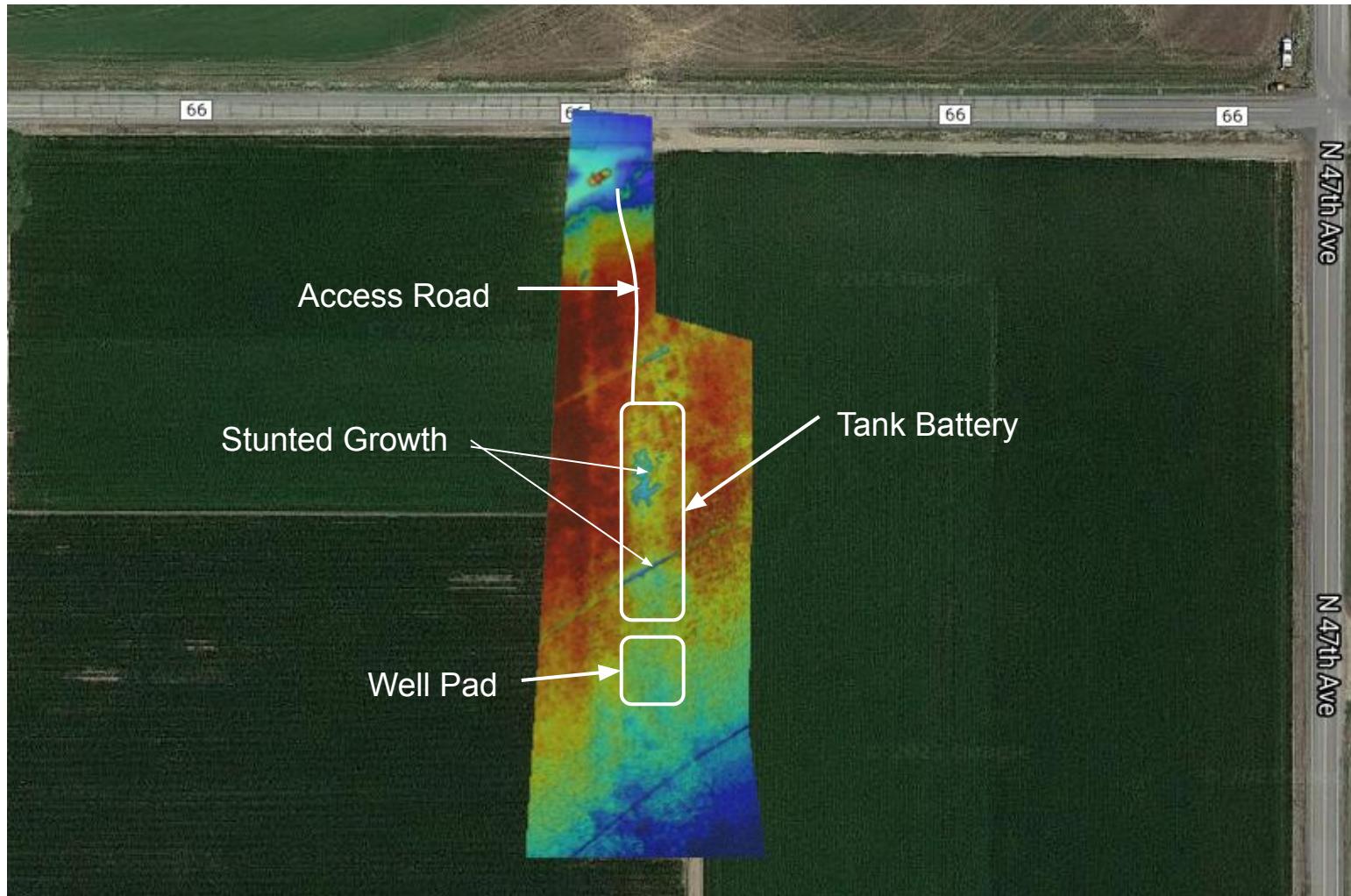


Photo 2. Plant elevation model of tank battery, well pad and associated access road taken using a drone. Photo shows stunted growth in portions of tank battery. (north is up)

Inspection Photos
Location Name: LEFFLER 1-27
Location ID: 319054

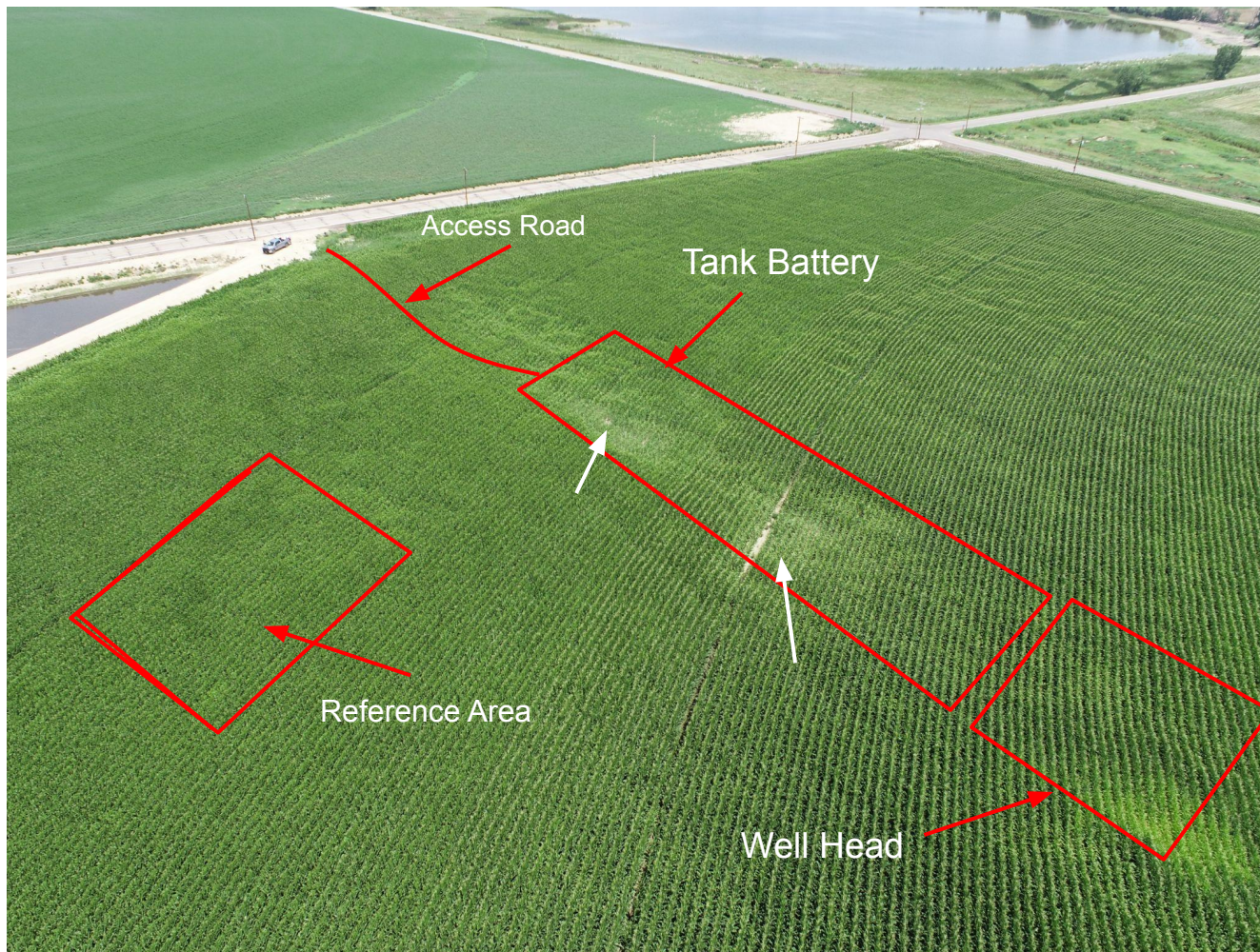


Photo 3. Overview photo of tank battery, well head, access road and reference area taken from west side of tank battery using a drone. Photo shows stunted growth in sections of tank battery (indicated by white arrows), while well pad crop growth appears consistent with adjacent reference area.

Inspection Photos
Location Name: LEFFLER 1-27
Location ID: 319054

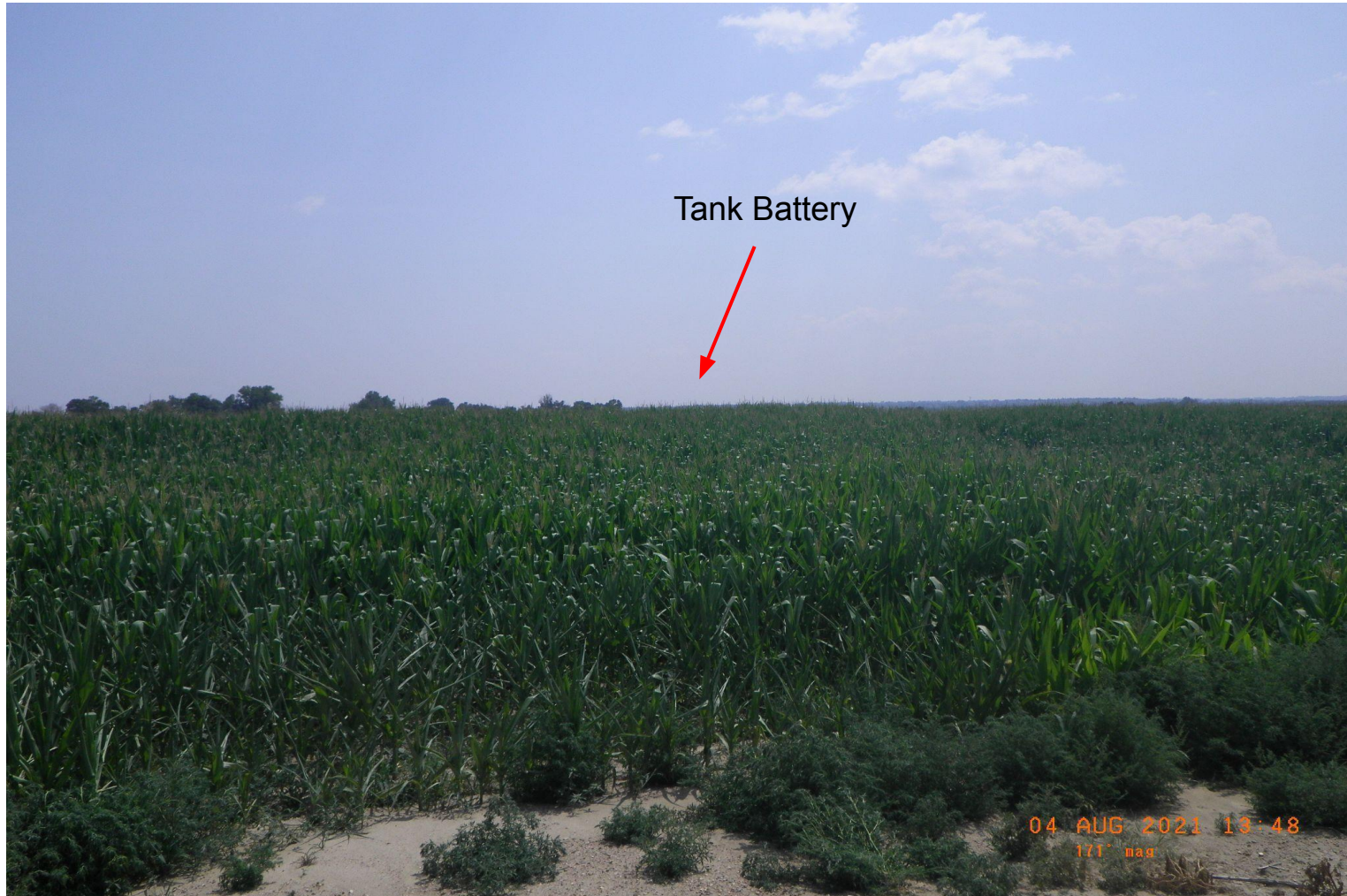


Photo 4. Photo taken at ground level north of tank battery and well head, looking south down access road. Bare patch at bottom of photo is not associated with oil and gas operations.