

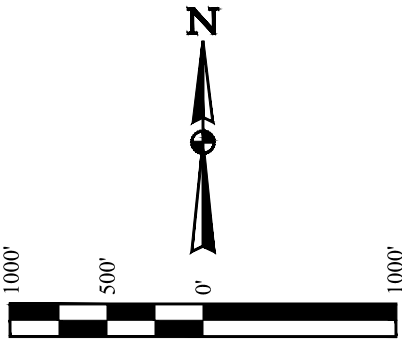
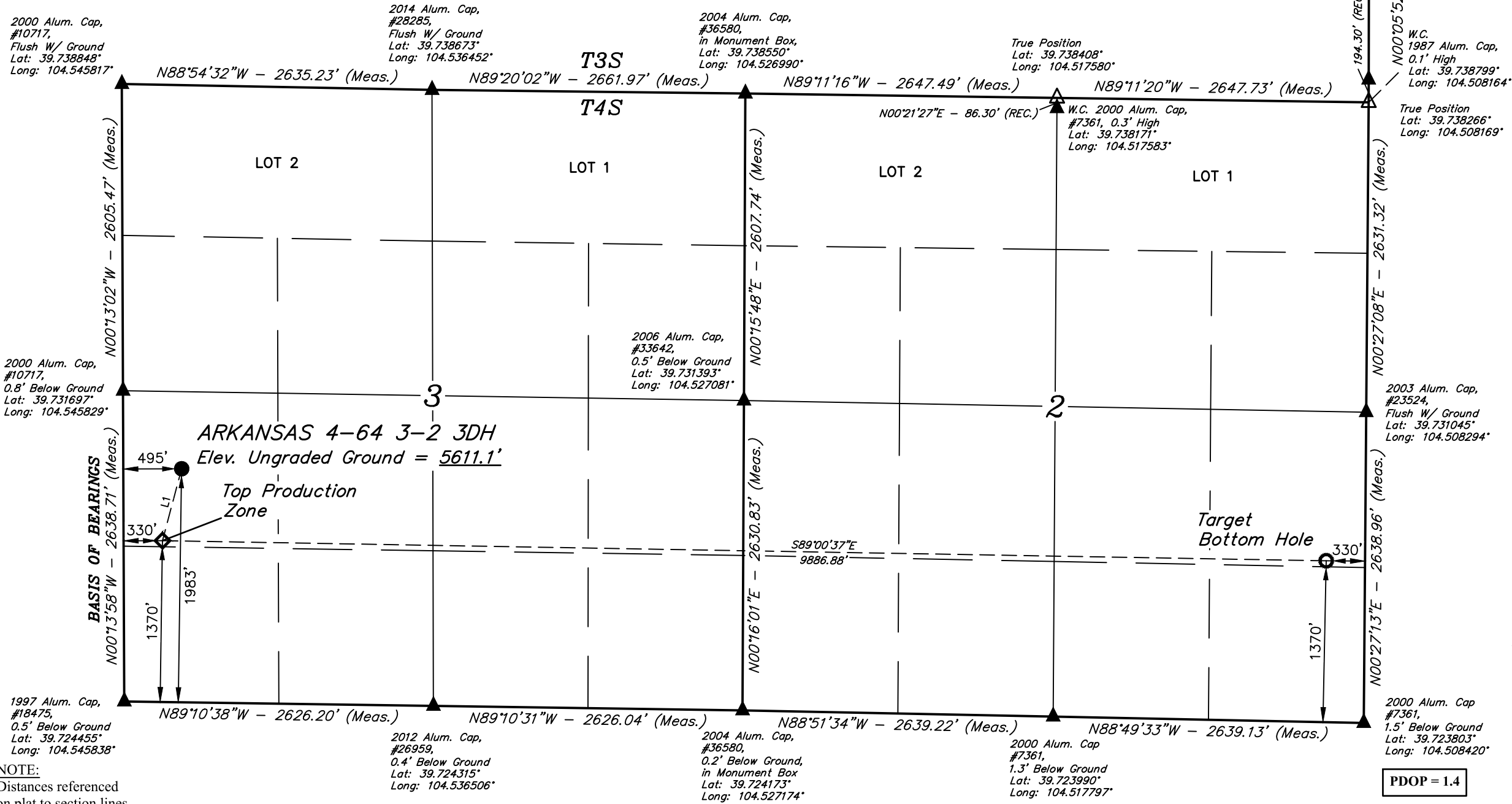
T4S, R64W, 6th P.M.

CRESTONE PEAK RESOURCES OPERATING LLC

ARKANSAS 4-64 3-2 3DH
NW 1/4 SW 1/4, SECTION 3, T4S, R64W, 6th P.M.
ARAPAHOE COUNTY, COLORADO

LINE TABLE		
LINE	DIRECTION	LENGTH
L1	S14°53'58"W	632.14'

BASIS OF ELEVATION
OPUS SOLUTION GENERATED NAVD 88



CERTIFICATE
THIS IS TO CERTIFY THAT THE ABOVE PLAT WAS PREPARED FROM FIELD NOTES OF ACTUAL SURVEYS MADE BY ME OR UNDER MY SUPERVISION, AND THAT THE SAME ARE TRUE AND CORRECT TO THE BEST OF MY KNOWLEDGE AND BELIEF.



NOTE:
Distances referenced on plat to section lines are perpendicular.

LEGEND:
● = PROPOSED WELLHEAD.
◆ = TOP PRODUCTION ZONE.
○ = TARGET BOTTOM HOLE.
▲ = SECTION CORNERS LOCATED. (NAD 83)
△ = SECTION CORNERS RE-ESTABLISHED. (Not Set on Ground.) (NAD 83)

NAD 83 (SURFACE LOCATION)	NAD 83 (TOP PRODUCTION ZONE)	NAD 83 (TARGET BOTTOM HOLE)
LATITUDE = 39°43'47.54" (39.729872°)	LATITUDE = 39°43'41.51" (39.728198°)	LATITUDE = 39°43'39.31" (39.727586°)
LONGITUDE = 104°32'38.66" (104.544072°)	LONGITUDE = 104°32'40.78" (104.544660°)	LONGITUDE = 104°30'34.30" (104.509527°)
NAD 27 (SURFACE LOCATION)	NAD 27 (TOP PRODUCTION ZONE)	NAD 27 (TARGET BOTTOM HOLE)
LATITUDE = 39°43'47.59" (39.729886°)	LATITUDE = 39°43'41.56" (39.728212°)	LATITUDE = 39°43'39.36" (39.727600°)
LONGITUDE = 104°32'36.78" (104.543551°)	LONGITUDE = 104°32'38.90" (104.544140°)	LONGITUDE = 104°30'32.43" (104.509008°)
STATE PLANE NAD 83 (CO. CEN.)	STATE PLANE NAD 83 (CO. CEN.)	STATE PLANE NAD 83 (CO. CEN.)
N: 1692150.12' E: 3268862.11'	N: 1691538.51' E: 3268702.93'	N: 1691421.48' E: 3278586.61'
STATE PLANE NAD 27 (CO. CEN.)	STATE PLANE NAD 27 (CO. CEN.)	STATE PLANE NAD 27 (CO. CEN.)
N: 692142.83' E: 2269015.36'	N: 691531.23' E: 2268856.20'	N: 691414.35' E: 2278739.79'

ENGINEERING & LAND SURVEYING

UELS, LLC
Corporate Office * 85 South 200 East
Vernal, UT 84078 * (435) 789-1017

SURVEYED BY	DALLAS NIELSEN	07-10-18	SCALE
DRAWN BY	C.IVIE	04-13-21	1" = 1000'

WELL LOCATION PLAT

REV: 1 07-13-21 C.C. (TPZ & TBH CHANGES)