

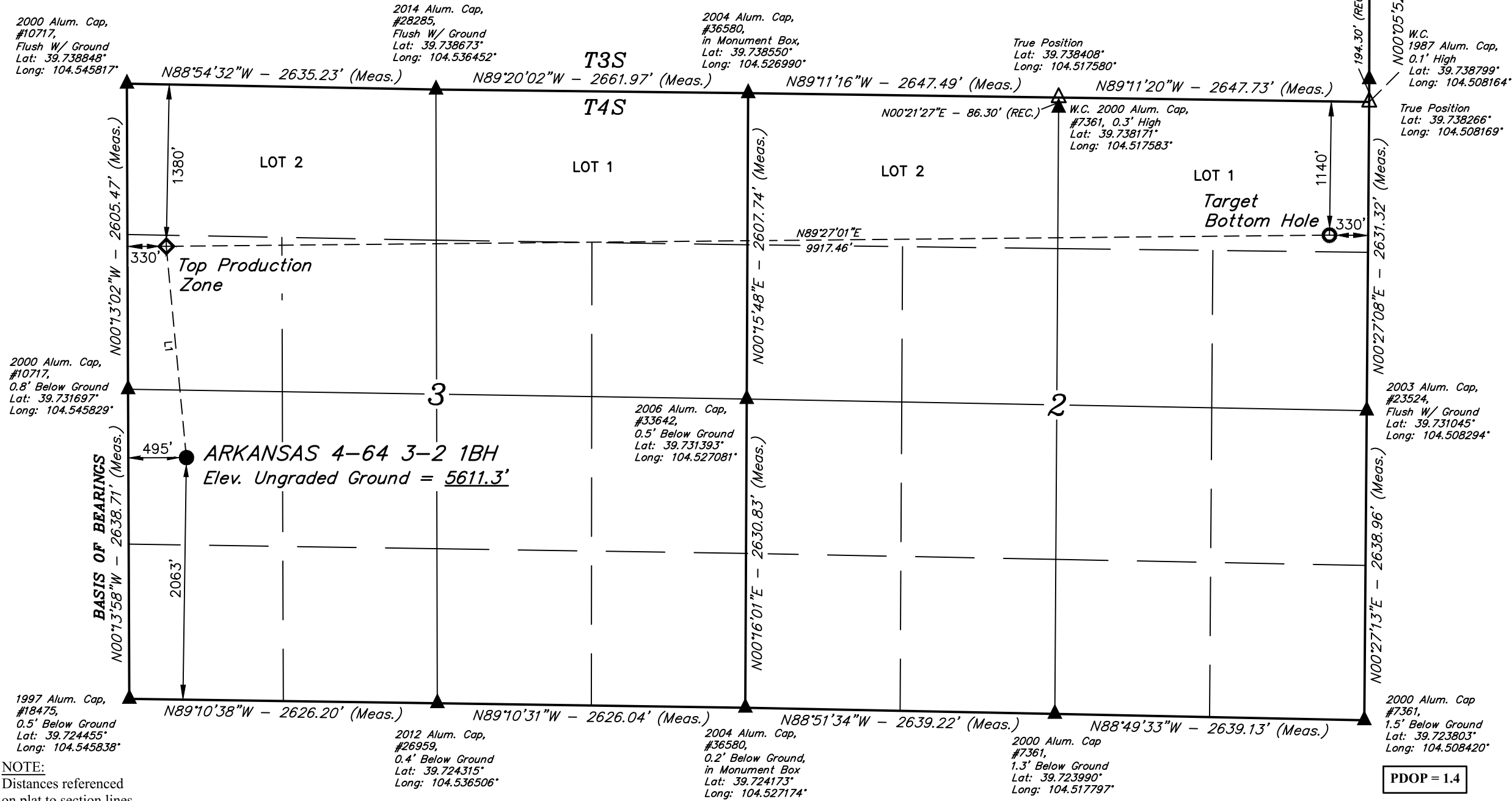
T4S, R64W, 6th P.M.

CRESTONE PEAK RESOURCES OPERATING LLC

ARKANSAS 4-64 3-2 1BH  
NW 1/4 SW 1/4, SECTION 3, T4S, R64W, 6th P.M.  
ARAPAHOE COUNTY, COLORADO

LINE TABLE		
LINE	DIRECTION	LENGTH
L1	N05°27'18"W	1809.38'

BASIS OF ELEVATION  
OPUS SOLUTION GENERATED NAVD 88



NOTE:  
Distances referenced  
on plat to section lines  
are perpendicular.

LEGEND:

- = PROPOSED WELLHEAD.
- ◆ = TOP PRODUCTION ZONE.
- = TARGET BOTTOM HOLE.
- ▲ = SECTION CORNERS LOCATED. (NAD 83)
- △ = SECTION CORNERS RE-ESTABLISHED.  
(Not Set on Ground.) (NAD 83)

NAD 83 (SURFACE LOCATION)	NAD 83 (TOP PRODUCTION ZONE)	NAD 83 (TARGET BOTTOM HOLE)
LATITUDE = 39°43'48.33" (39.730092°)	LATITUDE = 39°44'06.13" (39.735037°)	LATITUDE = 39°44'06.56" (39.735155°)
LONGITUDE = 104°32'38.66" (104.544071°)	LONGITUDE = 104°32'40.74" (104.544650°)	LONGITUDE = 104°30'33.83" (104.509396°)
NAD 27 (SURFACE LOCATION)	NAD 27 (TOP PRODUCTION ZONE)	NAD 27 (TARGET BOTTOM HOLE)
LATITUDE = 39°43'48.38" (39.730105°)	LATITUDE = 39°44'06.18" (39.735051°)	LATITUDE = 39°44'06.61" (39.735169°)
LONGITUDE = 104°32'36.78" (104.543551°)	LONGITUDE = 104°32'38.87" (104.544130°)	LONGITUDE = 104°30'31.96" (104.508877°)
STATE PLANE NAD 83 (CO. CEN.)	STATE PLANE NAD 83 (CO. CEN.)	STATE PLANE NAD 83 (CO. CEN.)
N: 1692230.05' E: 3268861.34'	N: 1694029.81' E: 3268679.59'	N: 1694178.83' E: 3278593.43'
STATE PLANE NAD 27 (CO. CEN.)	STATE PLANE NAD 27 (CO. CEN.)	STATE PLANE NAD 27 (CO. CEN.)
N: 692222.76' E: 2269014.60'	N: 694022.49' E: 2268832.82'	N: 694171.65' E: 2278746.56'

PDOP = 1.4

REV: 1 07-13-21 C.C. (TPZ & TBH CHANGES)



UELS, LLC  
Corporate Office \* 85 South 200 East  
Vernal, UT 84078 \* (435) 789-1017

SURVEYED BY	DALLAS NIELSEN	07-10-18	SCALE
DRAWN BY	C.IVIE	04-13-21	1" = 1000'

WELL LOCATION PLAT