

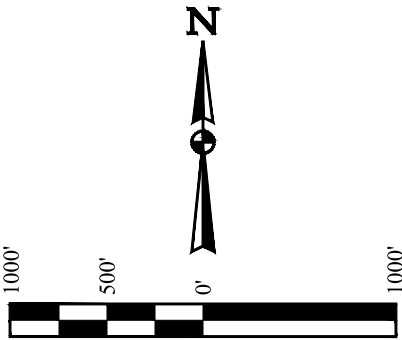
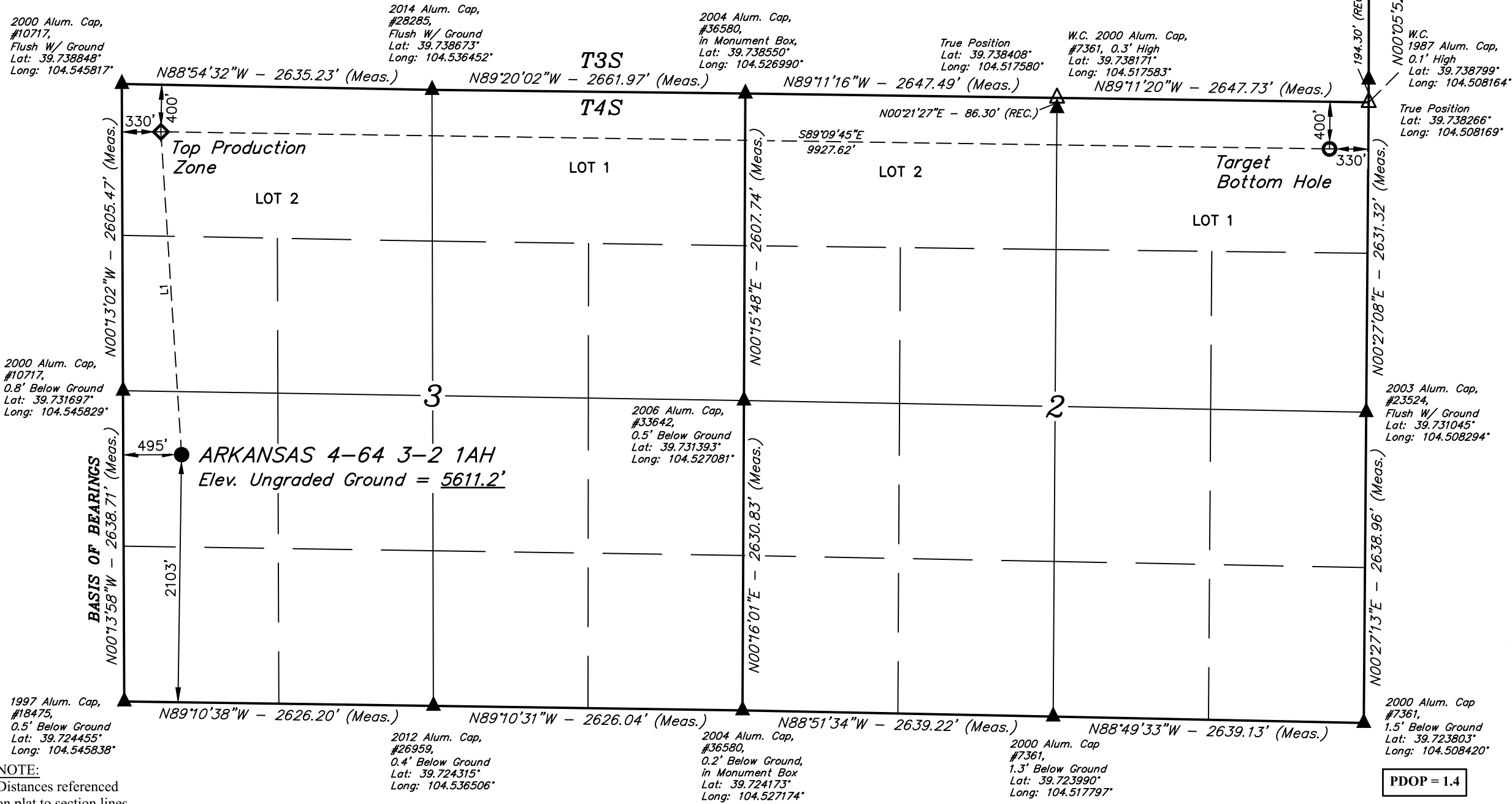
T4S, R64W, 6th P.M.

CRESTONE PEAK RESOURCES OPERATING LLC

ARKANSAS 4-64 3-2 1AH
NW 1/4 SW 1/4, SECTION 3, T4S, R64W, 6th P.M.
ARAPAHOE COUNTY, COLORADO

LINE TABLE		
LINE	DIRECTION	LENGTH
L1	N03°39'52"W	2747.22'

BASIS OF ELEVATION
OPUS SOLUTION GENERATED NAVD 88



NOTE:
Distances referenced
on plat to section lines
are perpendicular.

LEGEND:

- = PROPOSED WELLHEAD.
- ◆ = TOP PRODUCTION ZONE.
- = TARGET BOTTOM HOLE.
- ▲ = SECTION CORNERS LOCATED. (NAD 83)
- △ = SECTION CORNERS RE-ESTABLISHED.
(Not Set on Ground.) (NAD 83)

NAD 83 (SURFACE LOCATION)	NAD 83 (TOP PRODUCTION ZONE)	NAD 83 (TARGET BOTTOM HOLE)
LATITUDE = 39°43'48.72" (39.730201°)	LATITUDE = 39°44'15.82" (39.737728°)	LATITUDE = 39°44'13.87" (39.737186°)
LONGITUDE = 104°32'38.66" (104.544071°)	LONGITUDE = 104°32'40.72" (104.544646°)	LONGITUDE = 104°30'33.70" (104.509361°)
NAD 27 (SURFACE LOCATION)	NAD 27 (TOP PRODUCTION ZONE)	NAD 27 (TARGET BOTTOM HOLE)
LATITUDE = 39°43'48.77" (39.730215°)	LATITUDE = 39°44'15.87" (39.737742°)	LATITUDE = 39°44'13.92" (39.737200°)
LONGITUDE = 104°32'36.78" (104.543551°)	LONGITUDE = 104°32'38.85" (104.544126°)	LONGITUDE = 104°30'31.83" (104.508842°)
STATE PLANE NAD 83 (CO. CEN.)	STATE PLANE NAD 83 (CO. CEN.)	STATE PLANE NAD 83 (CO. CEN.)
N: 1692269.86' E: 3268860.99'	N: 1695009.78' E: 3268670.55'	N: 1694918.65' E: 3278595.25'
STATE PLANE NAD 27 (CO. CEN.)	STATE PLANE NAD 27 (CO. CEN.)	STATE PLANE NAD 27 (CO. CEN.)
N: 692262.57' E: 2269014.24'	N: 695002.44' E: 2268823.76'	N: 694911.46' E: 2278748.37'

PDOP = 1.4

REV: 1 07-13-21 C.C. (TPZ & TBH CHANGES)



UELS, LLC
Corporate Office * 85 South 200 East
Vernal, UT 84078 * (435) 789-1017

SURVEYED BY	DALLAS NIELSEN	07-10-18	SCALE
DRAWN BY	C.IVIE	04-13-21	1" = 1000'

WELL LOCATION PLAT