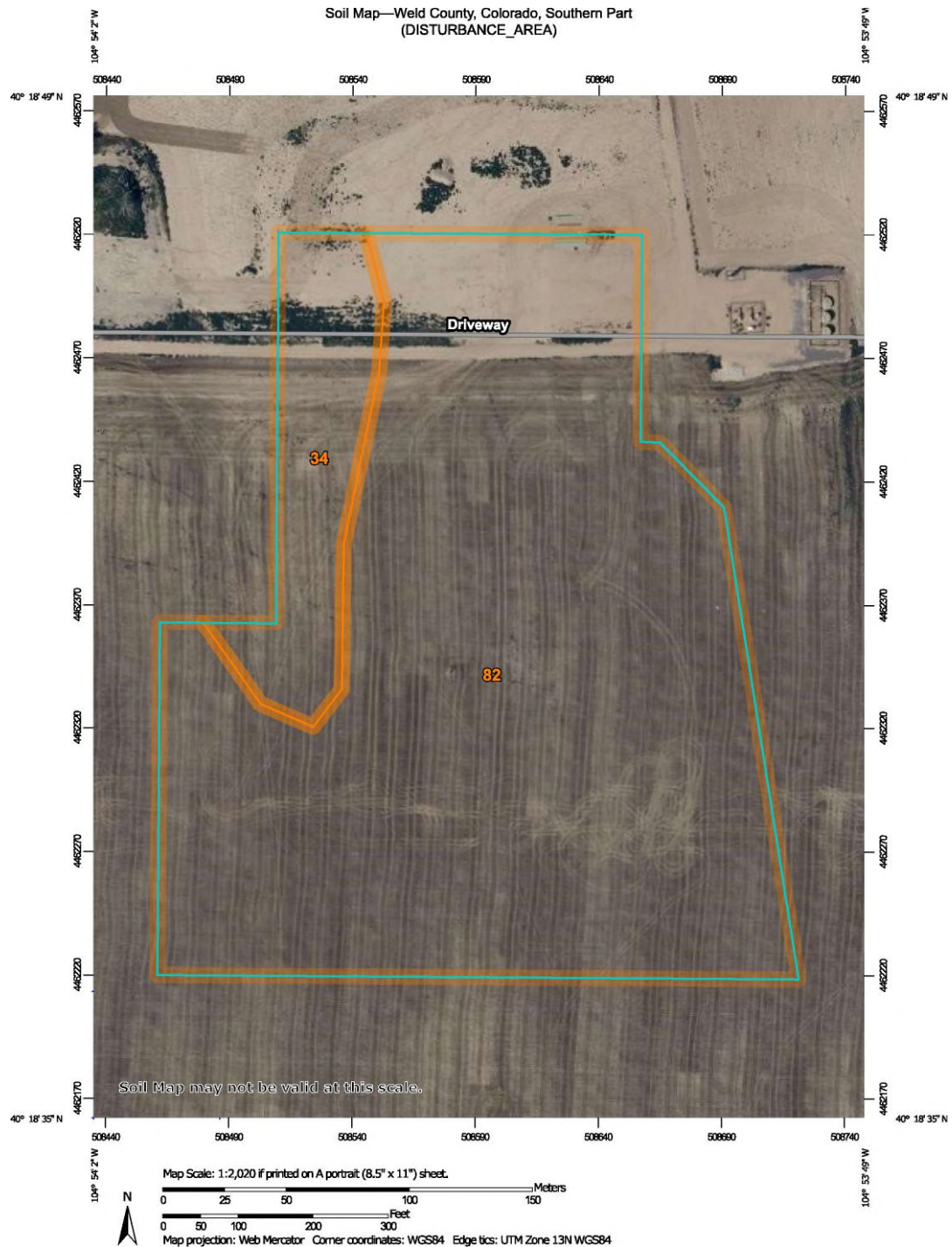


Kerr-McGee Oil & Gas Onshore LP (KMOG) Dust Mitigation Plan – Point Three 11-16

KMOG has developed this Dust Mitigation Plan in compliance with the Colorado Oil and Gas Conservation Commission (COGCC) Rule 427.

427.a(1) Soil Type



Map Unit Symbol	Map Unit Name	Acres in AOI	Percent of AOI
34	Kim loam, 5 to 9 percent slopes	1.8	11.7%
82	Wiley-Colby complex, 1 to 3 percent slopes	13.4	88.3%
Totals for Area of Interest		15.2	100.0%

427.a(2) Proposed Vehicle Speed Limits to Minimize Dust

- 10 mph on lease road from WCR 44 north into location and 5 mph once vehicles reach well pad/ facility

427.a(3) Total Area of Disturbance (In Acres)

- Well pad and Facility – 15.2 acres
- O&G Access Road – approximately 2.2 acres
 - Soil type – 82 Wiley-Colby, 83 Wiley-Colby & Kim loam
- Emergency Access Road (used for emergency vehicles) – approximately 2.4 acres
 - Soil type – 8 Ascalom loam, 34 Kim loam & 82 Wiley-Colby

427.a(4) Whether Access Roads are Paved

- Access roads are not paved

427.a(5) Number of Anticipated Truck Trips During Each Phase

- Construction Phase (includes pad and production facility construction) – 6,440 truck trips
- Drilling Phase – 7,892 truck trips
- Completions Phase – 13,026 truck trips
- Production Phase – 624 / average annual truck trips

427.a(6) A plan for Suppressing Fugitive Dust Caused Solely by Wind

- On active locations, in the event dust is caused solely by the wind KMOG will have fresh water deployed to suppress dust for the duration of the wind event
- In addition, disturbed soils will be placed to minimize ability for soil particles to become airborne. Various techniques to be used depending on soil type specific to each location:
 - Track pack/compact topsoil piles, consolidate soil used to construct perimeter ditch/berm and sediment traps
 - Hydro mulch and/or hydroseed topsoil piles and/or other stormwater BMP features
 - Seed/straw crimp disturbed soils where feasible
 - Place and compact gravel layer on working pad surfaces and access roads

427.a(7) Best Management Practices

- KMOG will proactively deploy fresh water to suppress dust along access road to well pad/ facility during all phases of pre-production operations
- Speed limits will be reduced to 10 mph on access road and 5 mph once vehicles reach well pad/ facility
- Access roads and Vehicle Tracking Control will receive maintenance as needed throughout operations

- In the event of high winds that generate dust that cannot be mitigated with an application of water, KMOG will shut down construction operations.
- KMOG coordinate with Weld County and Johnstown to apply magnesium chloride on WCR 44 from our location entrance east to WCR 19 (0.5 miles)