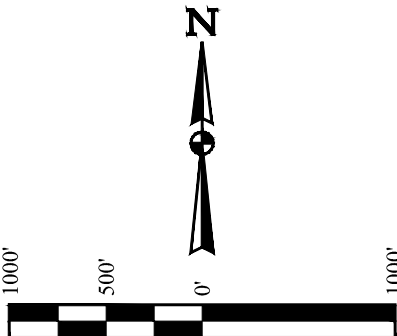


T4S, R65W, 6th P.M.

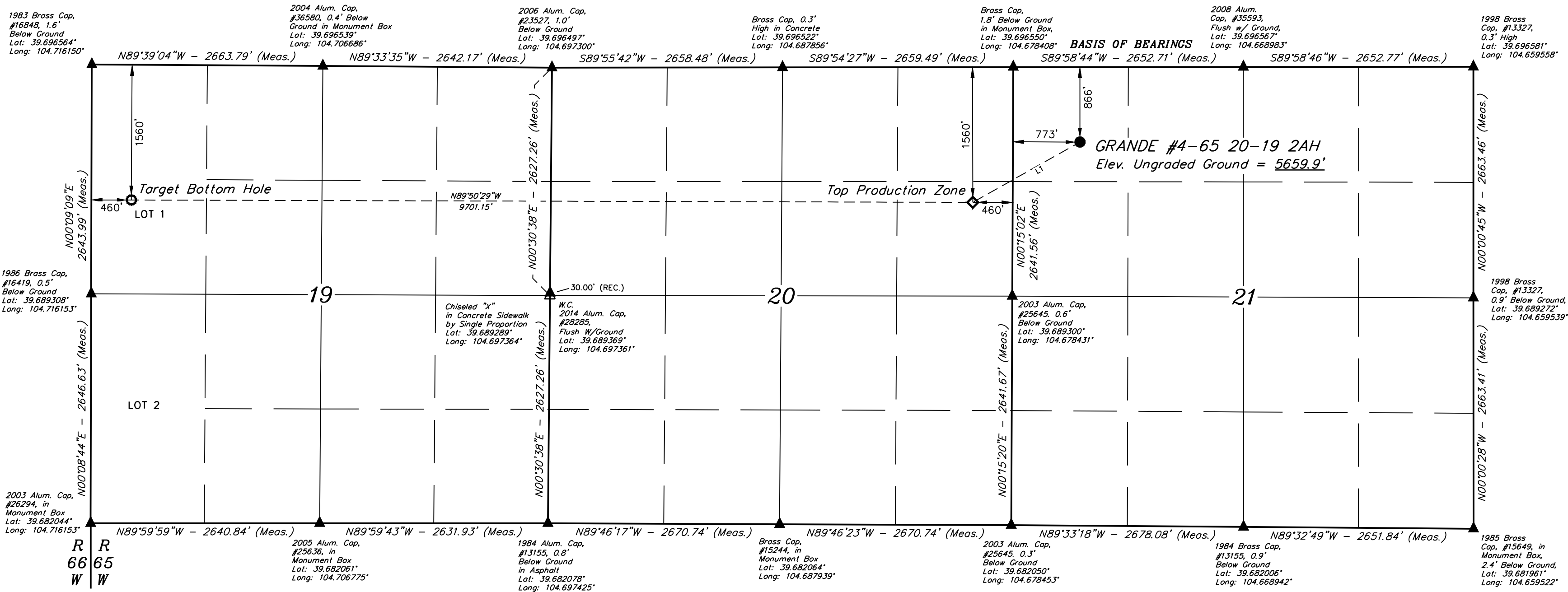
CRESTONE PEAK RESOURCES OPERATING LLC

GRANDE #4-65 20-19 2AH  
NW 1/4 NW 1/4, SECTION 21, T4S, R65W, 6th P.M.  
ARAPAHOE COUNTY, COLORADO

BASIS OF ELEVATION  
BENCHMARK 374 LOCATED ON THE SECTION LINE BETWEEN  
SECTIONS 12 & 13, T5S, R64W, 6th P.M., TAKEN FROM 1988  
PUBLISHED DATUM BY THE UNITED STATES DEPARTMENT OF  
THE INTERIOR, GEOLOGICAL SURVEY AS BEING 6054.61 FEET.



LINE TABLE		
LINE	DIRECTION	LENGTH
L1	S60°38'28"W	1417.92'



- LEGEND:
- = PROPOSED WELLHEAD.
  - ◆ = TOP PRODUCTION ZONE.
  - = TARGET BOTTOM HOLE.
  - ▲ = SECTION CORNERS LOCATED. (NAD 83)
  - △ = SECTION CORNERS RE-ESTABLISHED. (Not Set on Ground.) (NAD 83)

NOTE:  
DISTANCES REFERENCED ON PLAT TO  
SECTION LINES ARE PERPENDICULAR.

PDOP = 1.8		
NAD 83 (SURFACE LOCATION)	NAD 83 (TOP PRODUCTION ZONE)	NAD 83 (TARGET BOTTOM HOLE)
LATITUDE = 39°41'39.04" (39.694178)	LATITUDE = 39°41'32.15" (39.692263)	LATITUDE = 39°41'32.20" (39.692279)
LONGITUDE = 104°40'32.41" (104.675669)	LONGITUDE = 104°40'48.20" (104.680054)	LONGITUDE = 104°42'52.26" (104.714517)
NAD 27 (SURFACE LOCATION)	NAD 27 (TOP PRODUCTION ZONE)	NAD 27 (TARGET BOTTOM HOLE)
LATITUDE = 39°41'39.09" (39.694190)	LATITUDE = 39°41'32.19" (39.692276)	LATITUDE = 39°41'32.25" (39.692291)
LONGITUDE = 104°40'30.52" (104.675144)	LONGITUDE = 104°40'46.30" (104.679529)	LONGITUDE = 104°42'50.37" (104.713991)
STATE PLANE NAD 83 (CO. CEN.)	STATE PLANE NAD 83 (CO. CEN.)	STATE PLANE NAD 83 (CO. CEN.)
N: 1678785.70 E: 3231968.37	N: 1678077.17 E: 3230740.64	N: 1677997.23 E: 3221042.69
STATE PLANE NAD 27 (CO. CEN.)	STATE PLANE NAD 27 (CO. CEN.)	STATE PLANE NAD 27 (CO. CEN.)
N: 678778.03 E: 2232122.16	N: 678069.49 E: 2230894.46	N: 677989.40 E: 2221196.58

CERTIFICATE OF SURVEY  
THIS IS TO CERTIFY THAT THE ABOVE DESCRIBED SURVEY WAS MADE BY ME OR UNDER MY SUPERVISION AND THAT THE SAME ARE TRUE AND CORRECT TO THE BEST OF MY KNOWLEDGE AND BELIEF.  
REGISTERED LAND SURVEYOR  
REGISTRATION NO. 28285  
STATE OF COLORADO  
JULIAN L. RYAN, JR.

UINTEAH  
ENGINEERING & LAND SURVEYING

UELS, LLC  
Corporate Office \* 85 South 200 East  
Vernal, UT 84078 \* (435) 789-1017

SURVEYED BY CHAD MEIERS, O.R.  
DRAWN BY K.B.

08-24-18  
07-17-17

SCALE  
1" = 1000'

WELL LOCATION PLAT