



**CEMENT BOND LOG
WITH GAMMA RAY**

Comp. ANADARKO PETROLEUM CORP.
 Well PULLOS JAMES GU 2
 Field WATTENBERG
 Co. WELD
 State COLORADO

Company **ANADARKO PETROLEUM CORP.**
 Well **PULLOS JAMES GU 2**
 Field **WATTENBERG**
 County **WELD** State **COLORADO**

Location: API #: 05-123-09776
 SEC 10 TWP 2N RGE 6SW
 NW NW
 Permanent Datum GL Elevation 4853'
 Log Measured From KB 10' Above Perm. Datum
 Drilling Measured From KB
 Other Services
 PERF
 K.B. 4863'
 D.F. N/A
 G.L. 4853'

Date of Service	05/07/2021			
Run Number	ONE			
Depth Driller or P8TD	7735'			
Depth Logger	3000'			
Bottom Log Interval	3000'			
Top Log Interval	SURFACE			
Open Hole Size	7-7/8"			
Type Fluid	WATER			
Fluid Level	SURFACE			
Fluid Density	N/A			
Max. Recorded Temperature	135			
Max. Wellhead Pressure	0			
Wellhead Connection	FULL LUB			
Estimated Cement Top	N/A			
Unit Number	P-132			
Wireline Size	9/32"			
Location	FORT MORGAN CO.			
Recorded By	P LOPEZ			
Witnessed By	VICTOR ILDEFONSO			
Tubing Record	Size	WFt	Top	Bottom
Surface Casing	8-5/8"	24	SURFACE	683'
Production Casing	4-1/2"	11.6	SURFACE	7734'
Liner Record				

<<< Fold Here >>>

All interpretations are opinions based on inferences from electrical or other measurements and Pioneer Wireline Services, LLC cannot and does not guarantee the accuracy or correctness of any interpretation, and Pioneer Wireline Services, LLC will not be liable or responsible for any loss, costs, damages, or expenses incurred or sustained by anyone resulting from any interpretation made by any of our officers, agents or employees.

Comments

N/A DENOTES NOT AVAILABLE OR NON-APPLICABLE.
 LOG CORRELATED TO J-W WIRELINE CBL DATED JULY-26-2010

THANK YOU FOR USING PIONEER ENERGY SERVICES!

Your Pioneer Energy Services Crew		Tool Data - Services	Serial Number
Engineer: P. LOPEZ	Operator: A. WHITE	RBL-DC	FW1411-67
Operator: T. CROW	Operator:	GR CCL	130588

Log Variables

Dataset field/well/run1/pass9/_vars_

Top - Bottom

BHTEMP_Src TEMP	BOREID in 7.875	BOTTEMP degF 120	CASEOD in 4.5	CASETHCK in 0.25	CASEWGHT lb/ft 11.6	MAXAMPL mV 0
MINAMPL mV 0.7	MINATTN db/ft 0.8	PERFS No	PPT usec 249	SRFTEMP degF 50	TDEPTH ft 3000	

Variable Description

BHTEMP_Src : BHTEMP Input Source Selector
 BOREID : Borehole I.D.
 BOTTEMP : Bottom Hole Temperature
 CASEOD : Casing O.D.
 CASETHCK : Casing Thickness
 CASEWGHT : Casing Weight
 MAXAMPL : Maximum Amplitude

MINAMPL : Minimum Amplitude
 MINATTN : Minimum Attenuation
 PERFS : Perforation Flag
 PPT : Predicted Pipe Time
 SRFTEMP : Surface Temperature
 TDEPTH : Total Depth

Sensor	Offset (ft)	Schematic	Description	Length (ft)	O.D. (in)	Weight (lb)	
			Cable Head-Titan_144 1 7/16" Titan Cable Head	1.03	1.44	2.00	
			Centralizer-275 Probe 2 3/4" Probe Adjustable Spring Centralizer	2.88	2.75	15.00	
TEMP	17.26			PROBE-RBT-DIGITAL-RBL-DCT (FW1411-67) Probe 2 3/4" Radii Bond with Temp-Corrosion Package	9.25	2.75	105.00
WVFS8	14.97						
WVFS7	14.97						
WVFS6	14.97						
WVFS5	14.97						
WVFS4	14.97						
WVFS3	14.97						
WVFS2	14.97						
WVFS1	14.97						
WVFCAL	14.97						
WV3FT	14.97						
WV5FT	13.97						
HEADVOLT	10.78		Centralizer-275 Probe 2 3/4" Probe Adjustable Spring Centralizer	2.88	2.75	15.00	

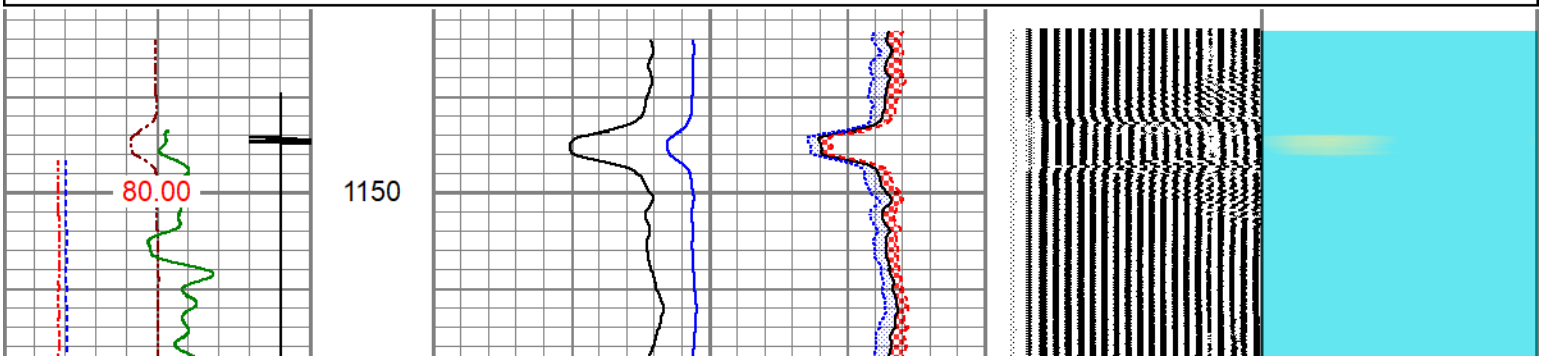
CCL	7.09		PROBE-GR/CCL-DIGITAL-275 Probe GCT (130588) Probe 2 3/4" Gamma Ray/Temp/CCL	4.69	2.75	60.00
GCT_TEMP	6.29		Centralizer-275 Probe 2 3/4" Probe Adjustable Spring Centralizer	2.88	2.75	15.00
GR	5.71		Bullnose-PROBE Probe Go Pin Pressure Cap	0.33	1.38	1.00
Dataset: anadarko_pullos james gu 2_0512309776_20210507_scbl.db: field/well/run1/pass9 Total length: 23.94 ft Total weight: 213.00 lb O.D.: 2.75 in						

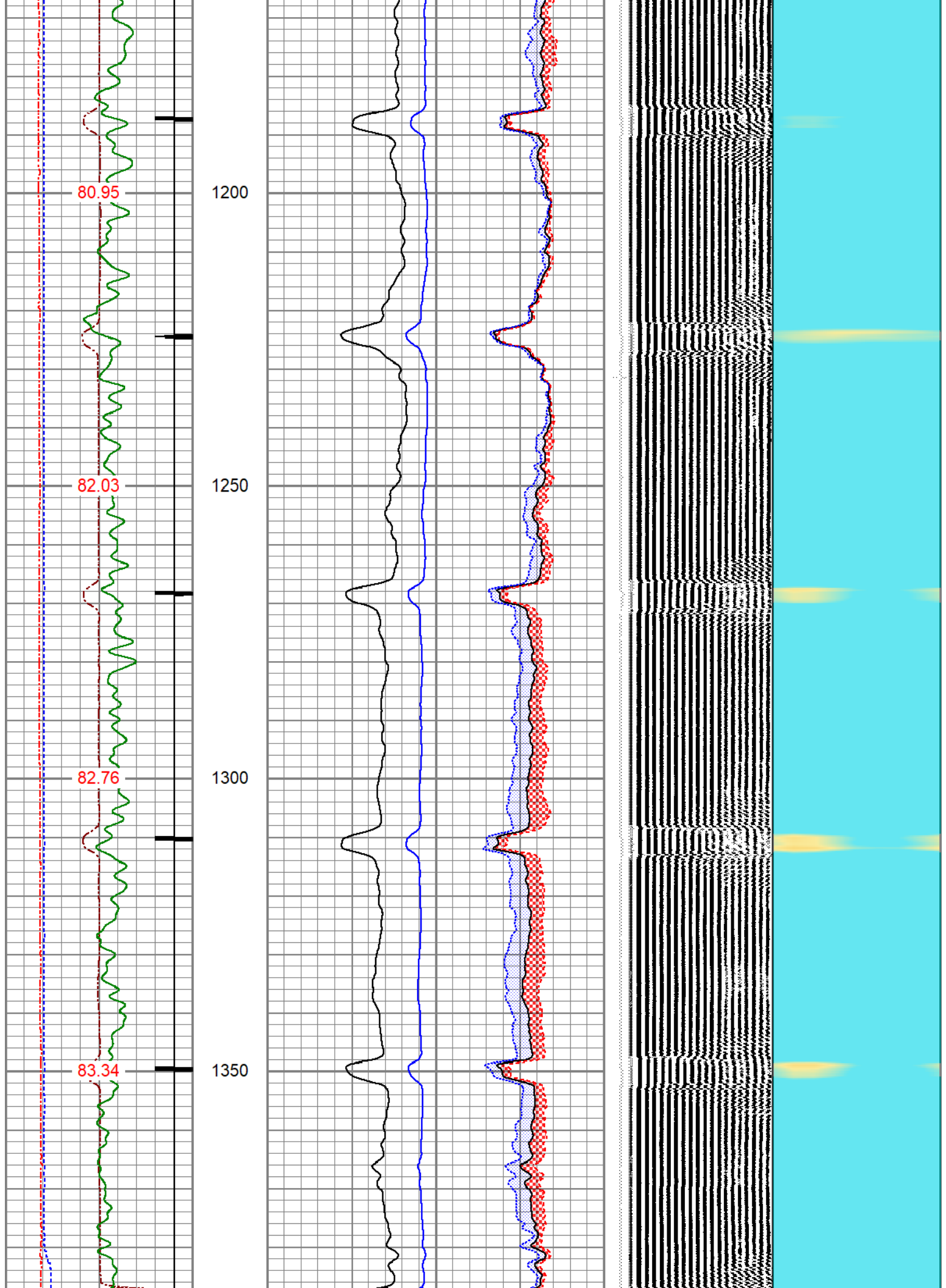
FREE PIPE SECTION

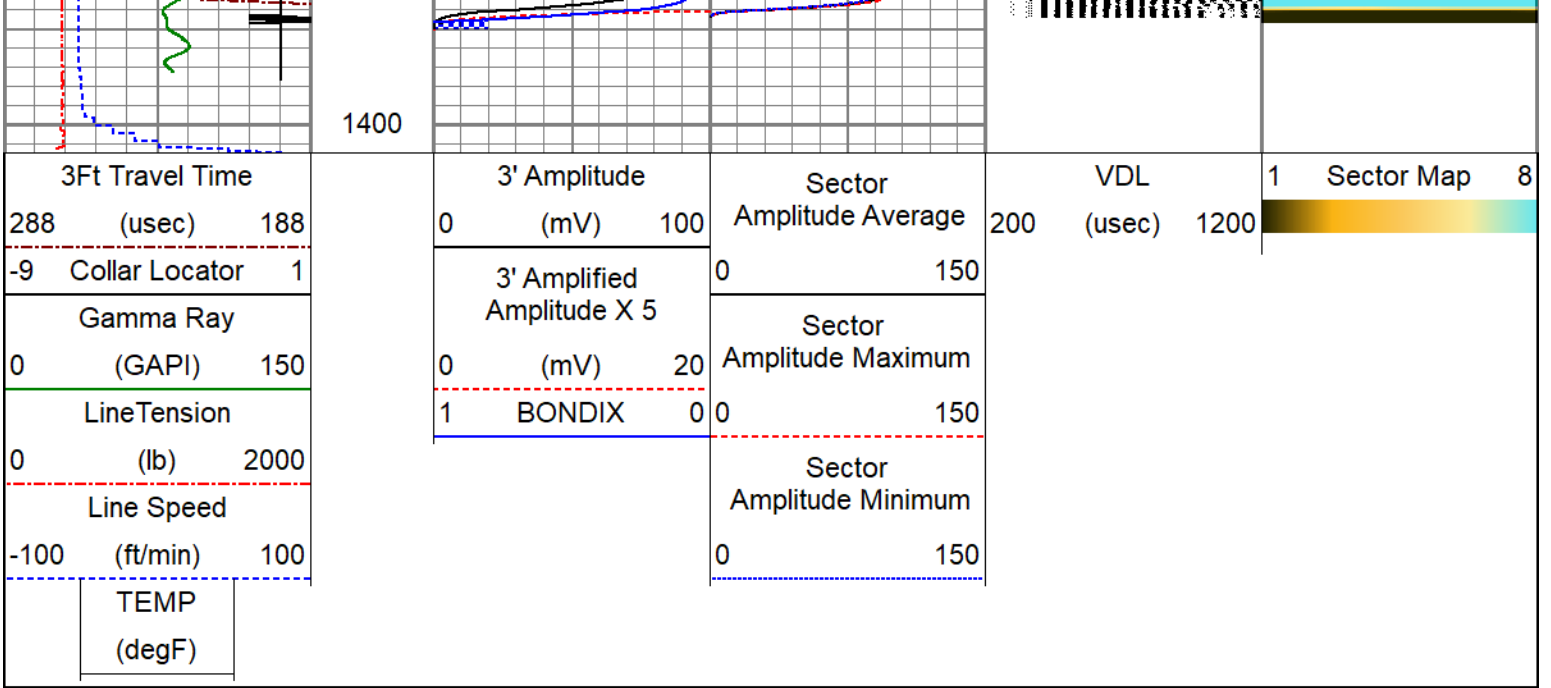
0 PSI APPLIED AT SURFACE

Database File: anadarko_pullos james gu 2_0512309776_20210507_scbl.db
 Dataset Pathname: pass4
 Presentation Format: pinr_scbl
 Dataset Creation: Fri May 07 08:45:38 2021
 Charted by: Depth in Feet scaled 1:240

3Ft Travel Time	3' Amplitude	Sector Amplitude Average	VDL	1	Sector Map	8
288 (usec) 188	0 (mV) 100	0 150	(usec) 1200			
-9 Collar Locator 1	3' Amplified Amplitude X 5	Sector Amplitude Maximum				
0 (GAPI) 150	0 (mV) 20	0 150				
LineTension	1 BONDIX 0	Sector Amplitude Minimum				
0 (lb) 2000		0 150				
Line Speed						
-100 (ft/min) 100						
TEMP (degF)						



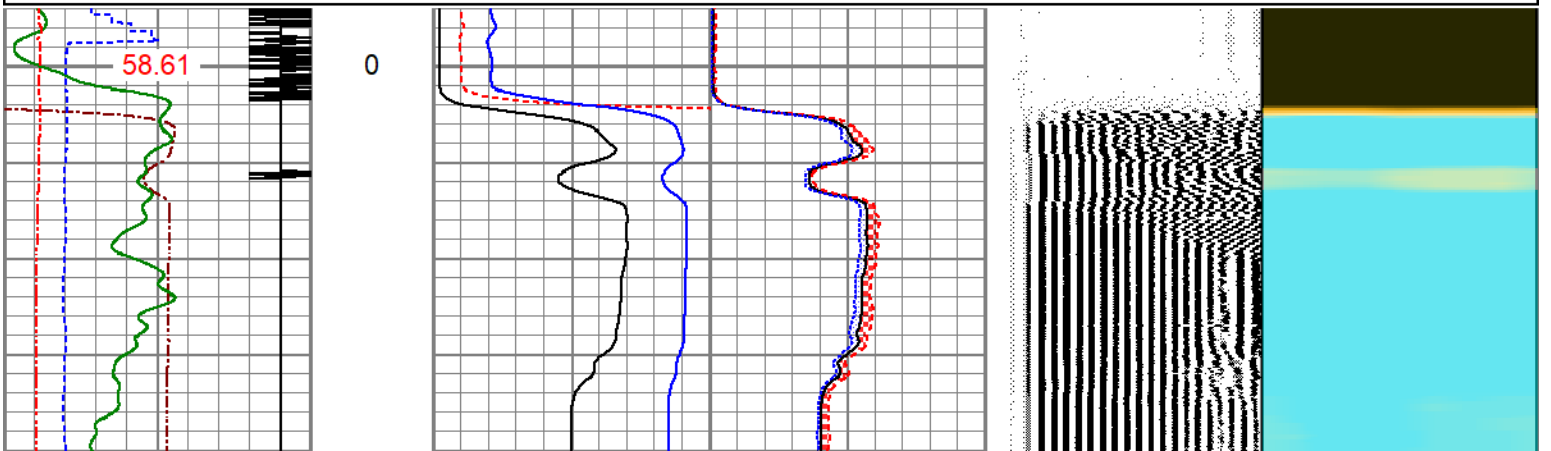
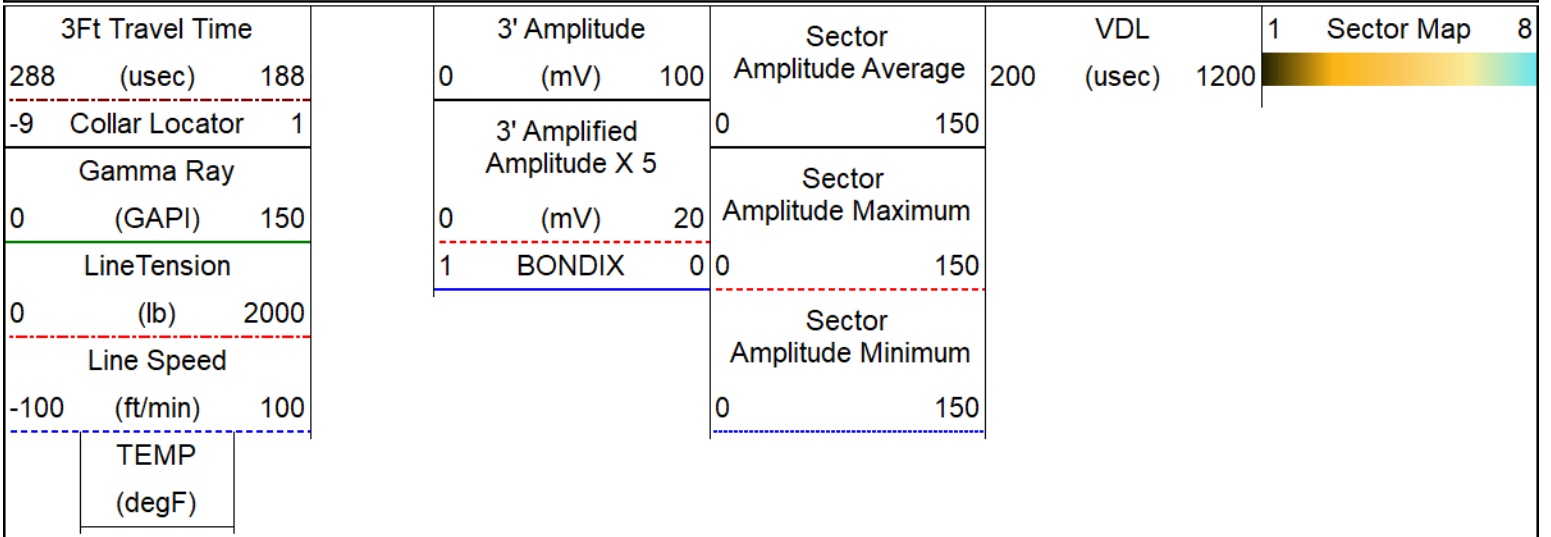


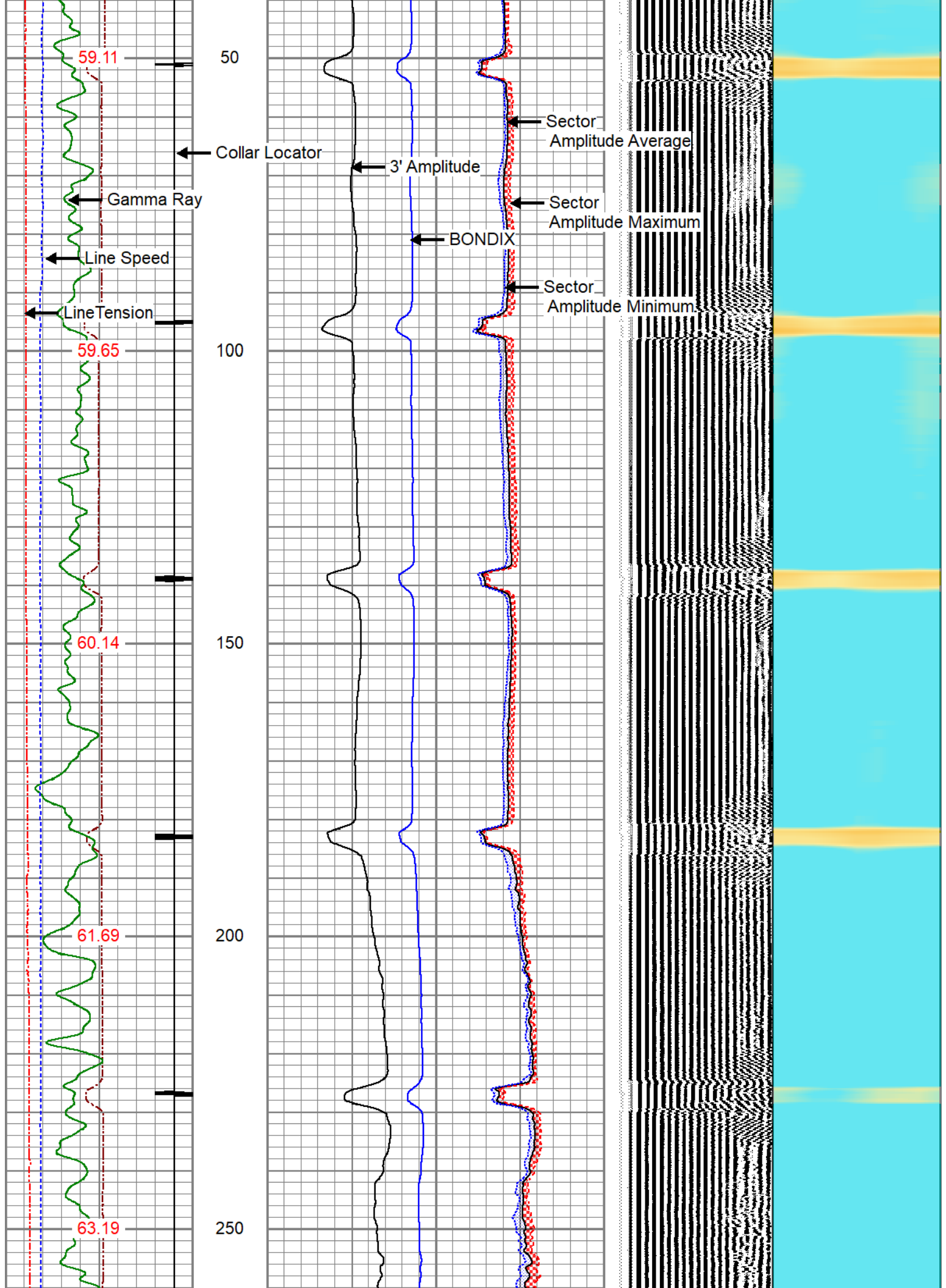


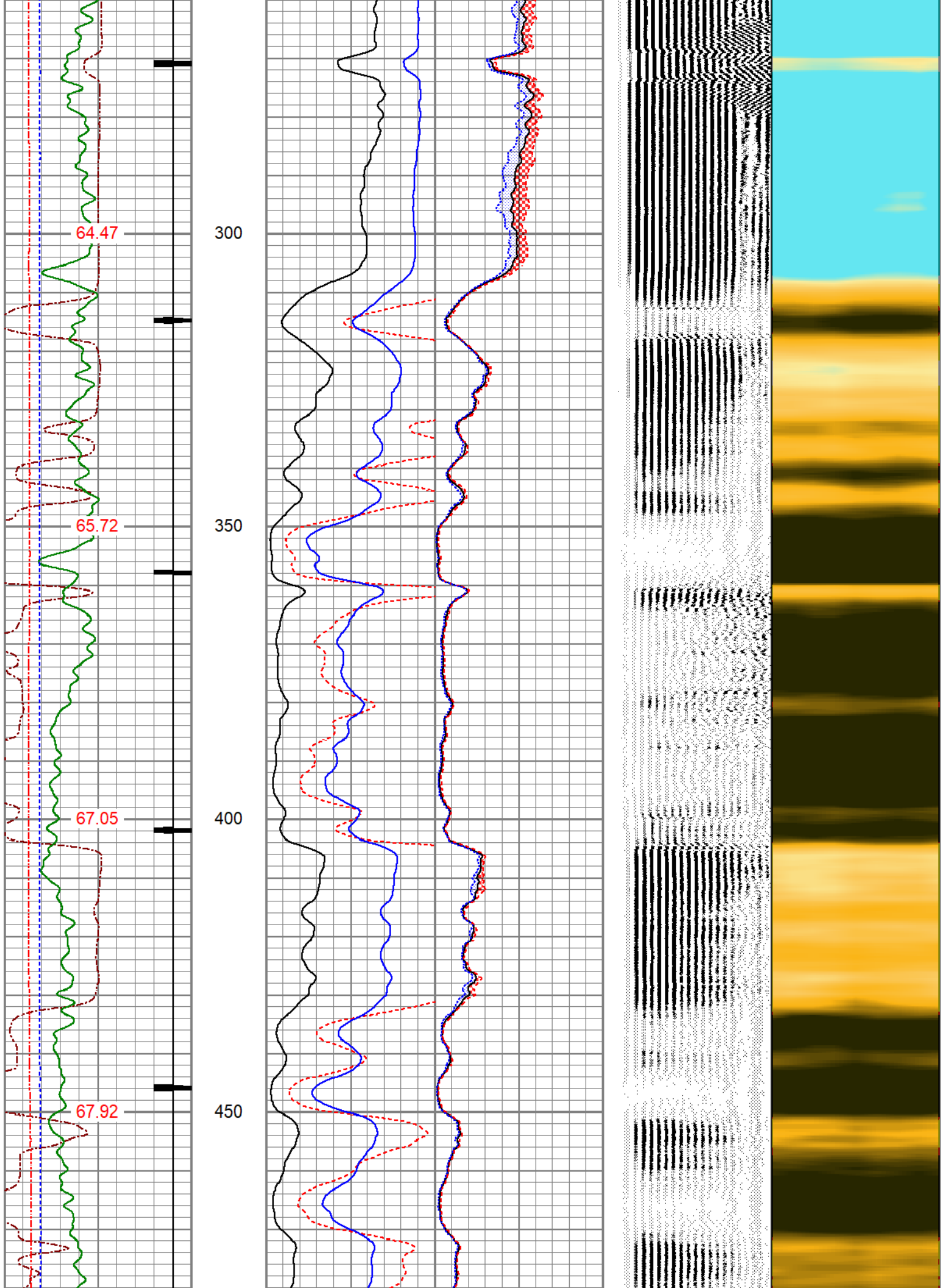
MAIN LOG

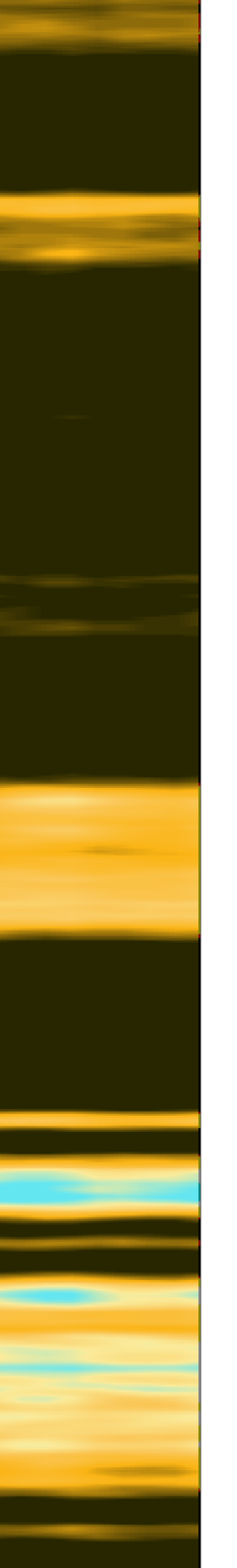
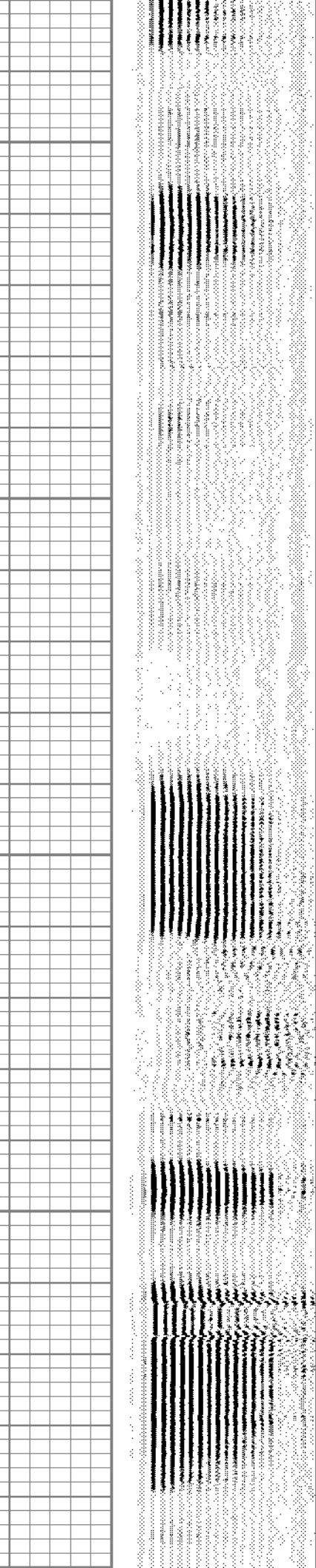
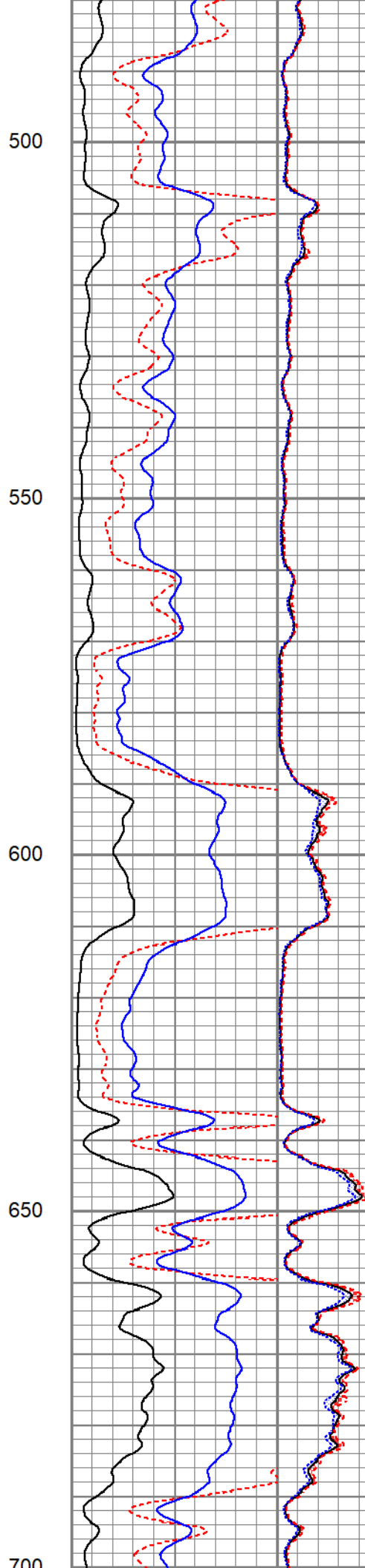
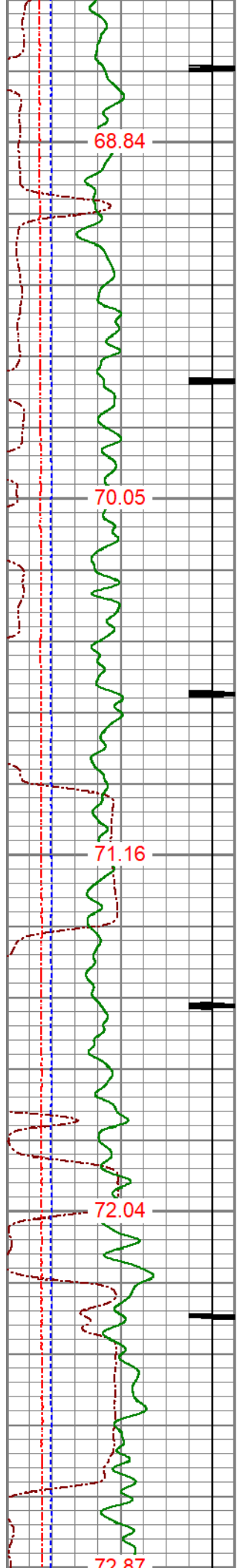
0 PSI APPLIED AT SURFACE

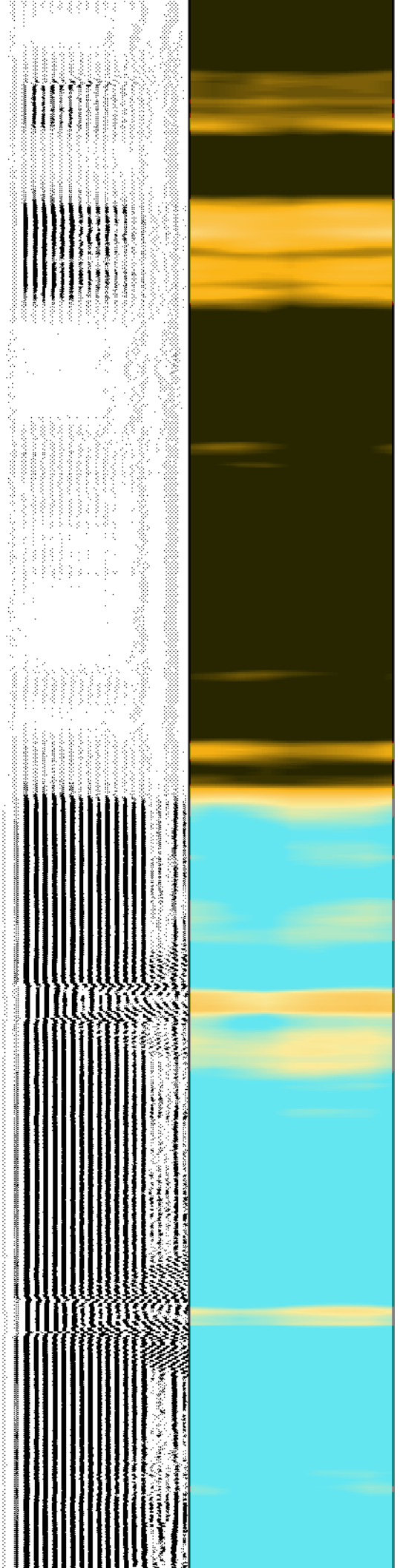
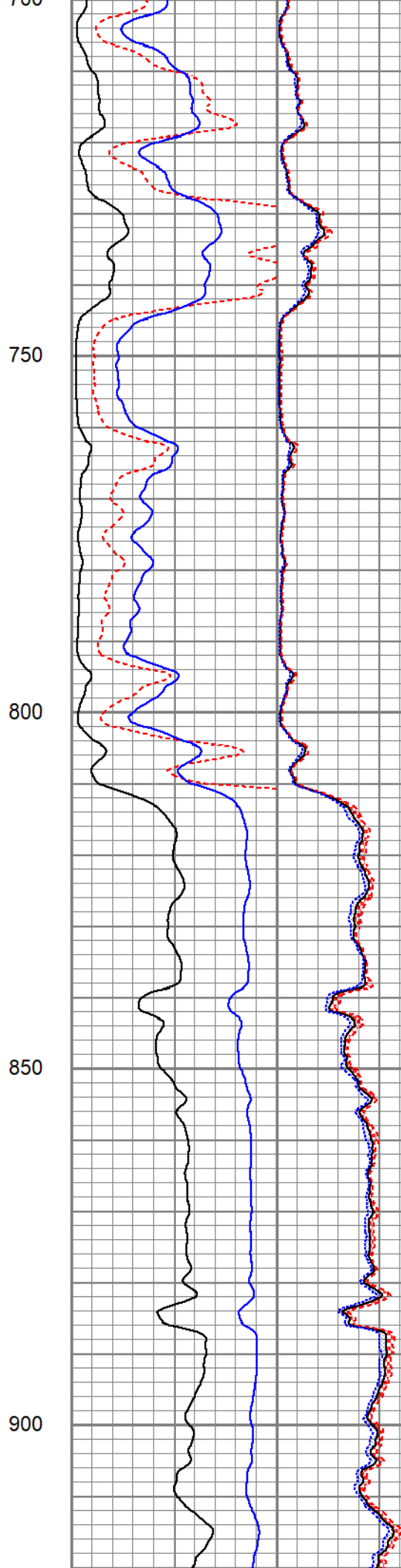
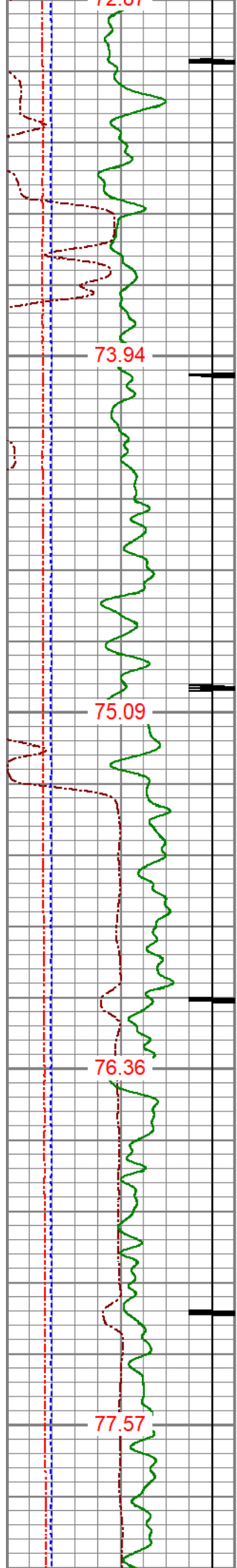
Database File: anadarko_pullos james gu 2_0512309776_20210507_scbl.db
 Dataset Pathname: pass9.1
 Presentation Format: pinr_scbl
 Dataset Creation: Fri May 07 09:53:20 2021
 Charted by: Depth in Feet scaled 1:240

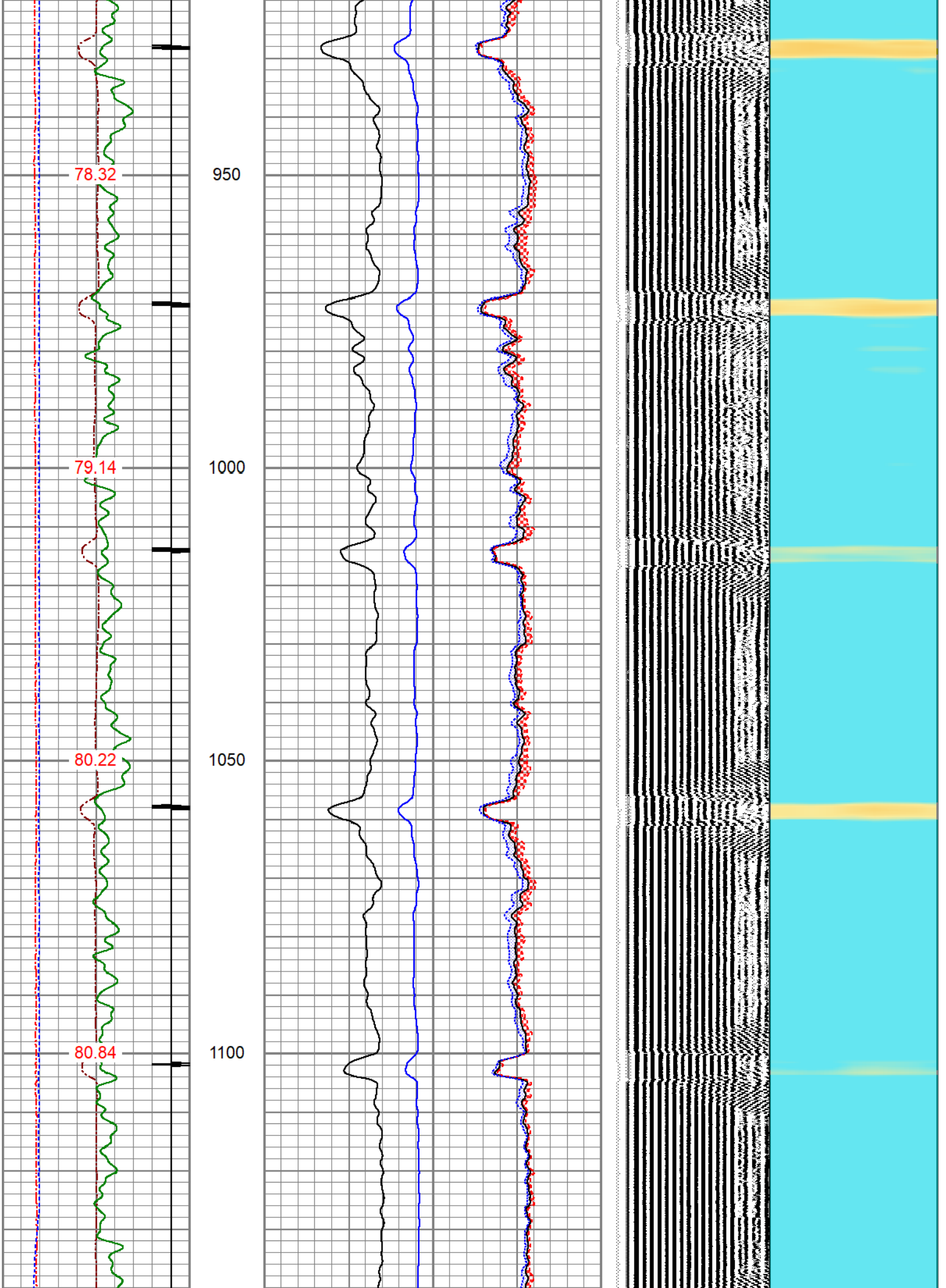


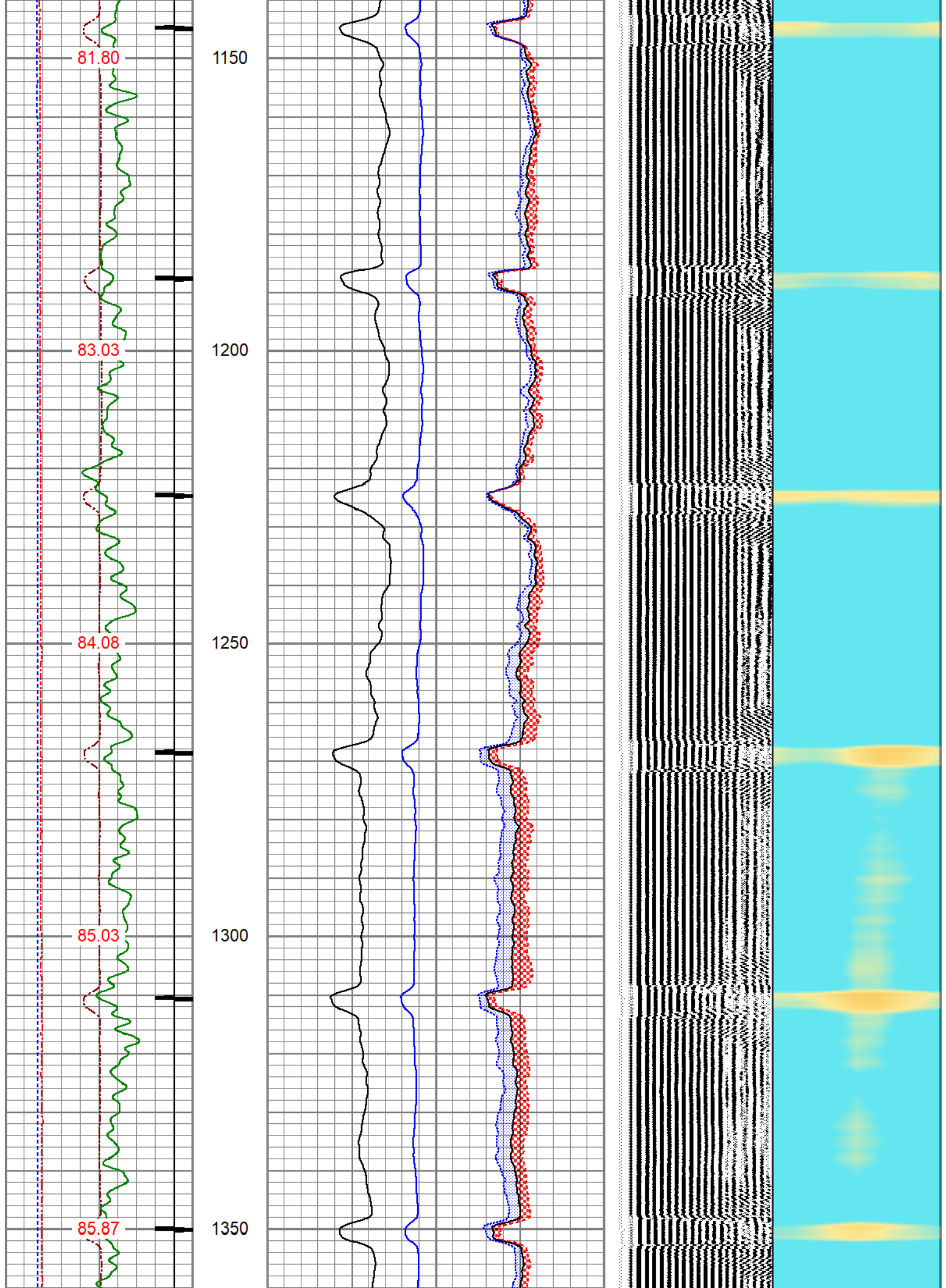


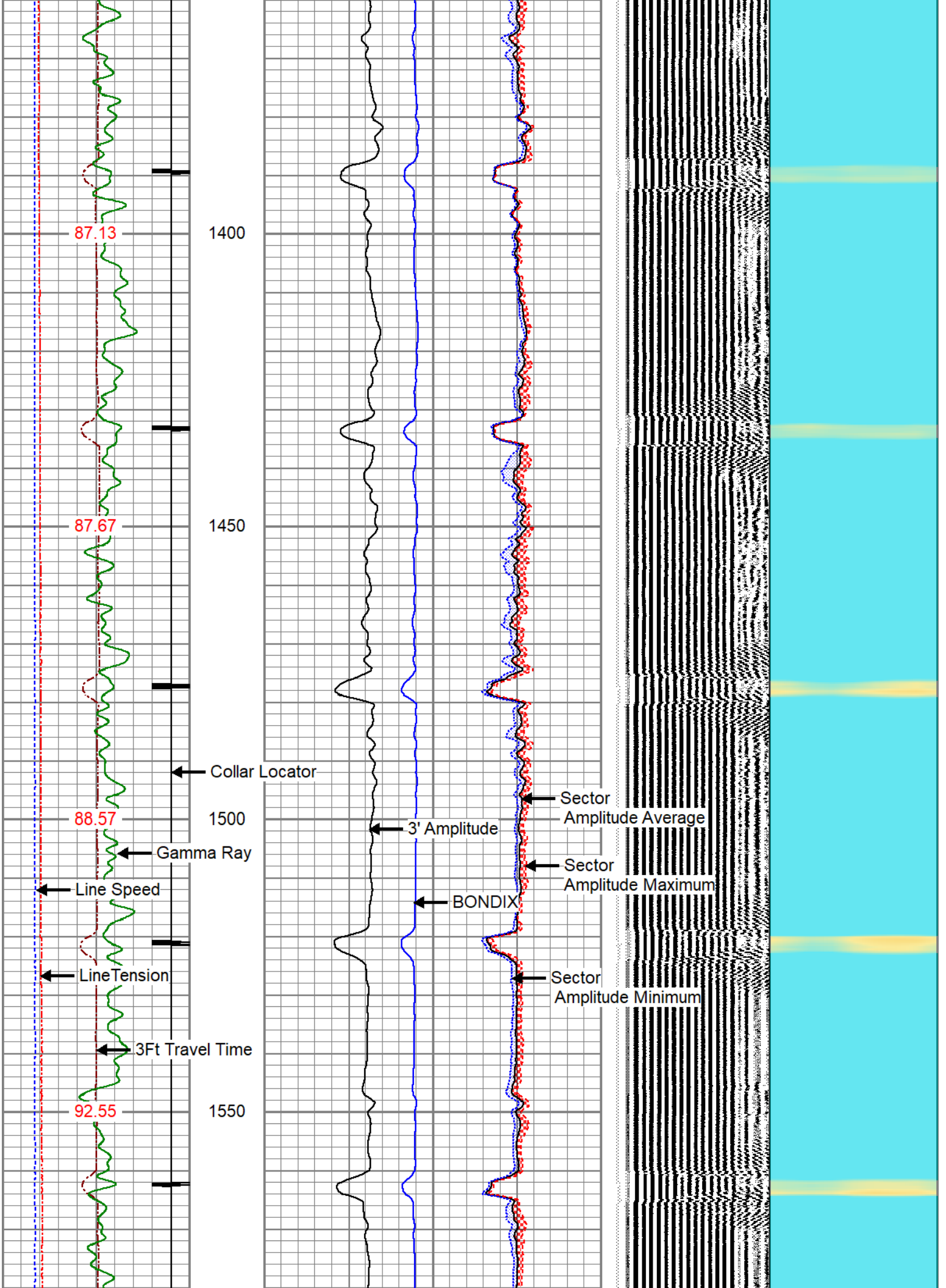


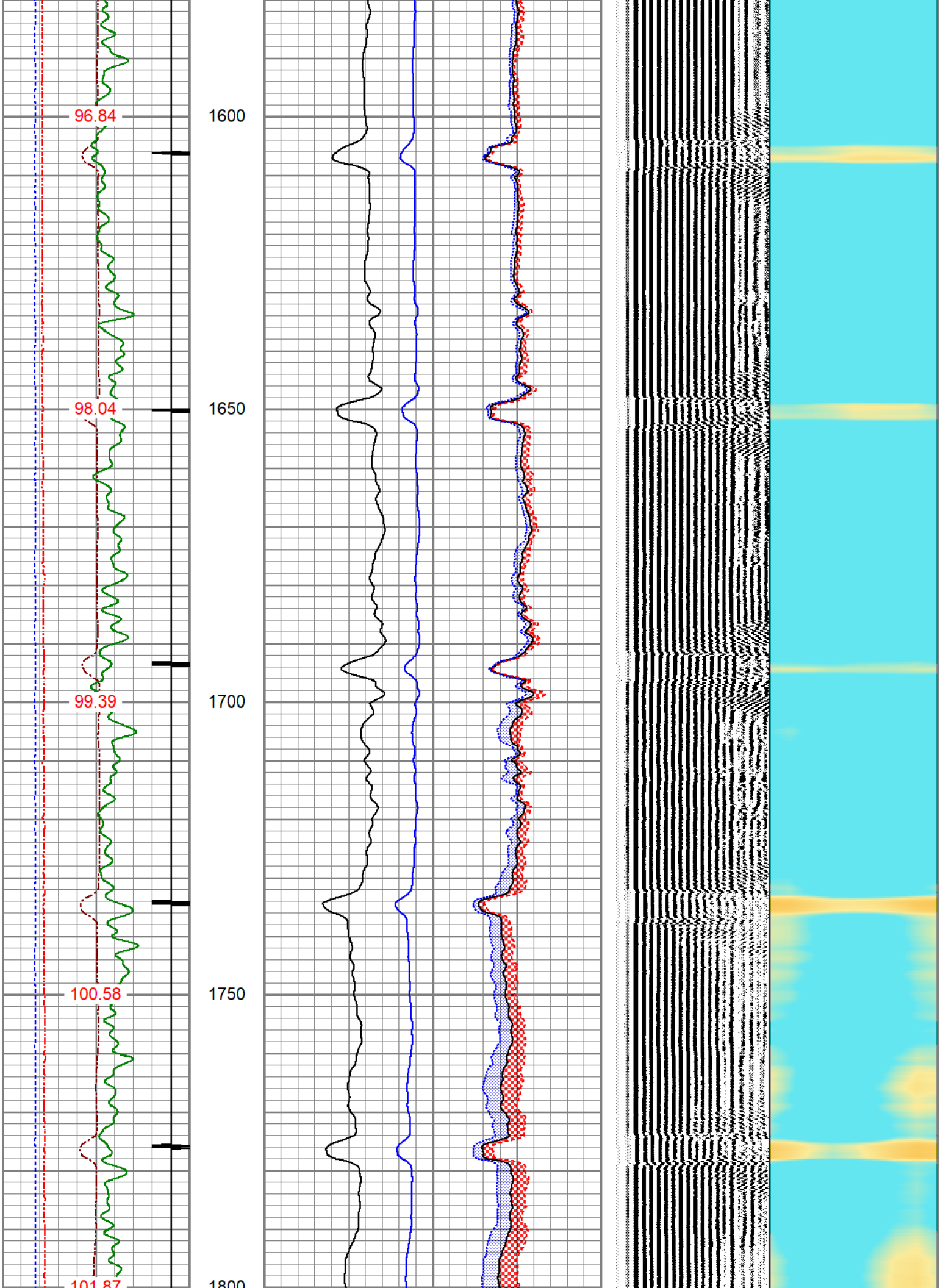


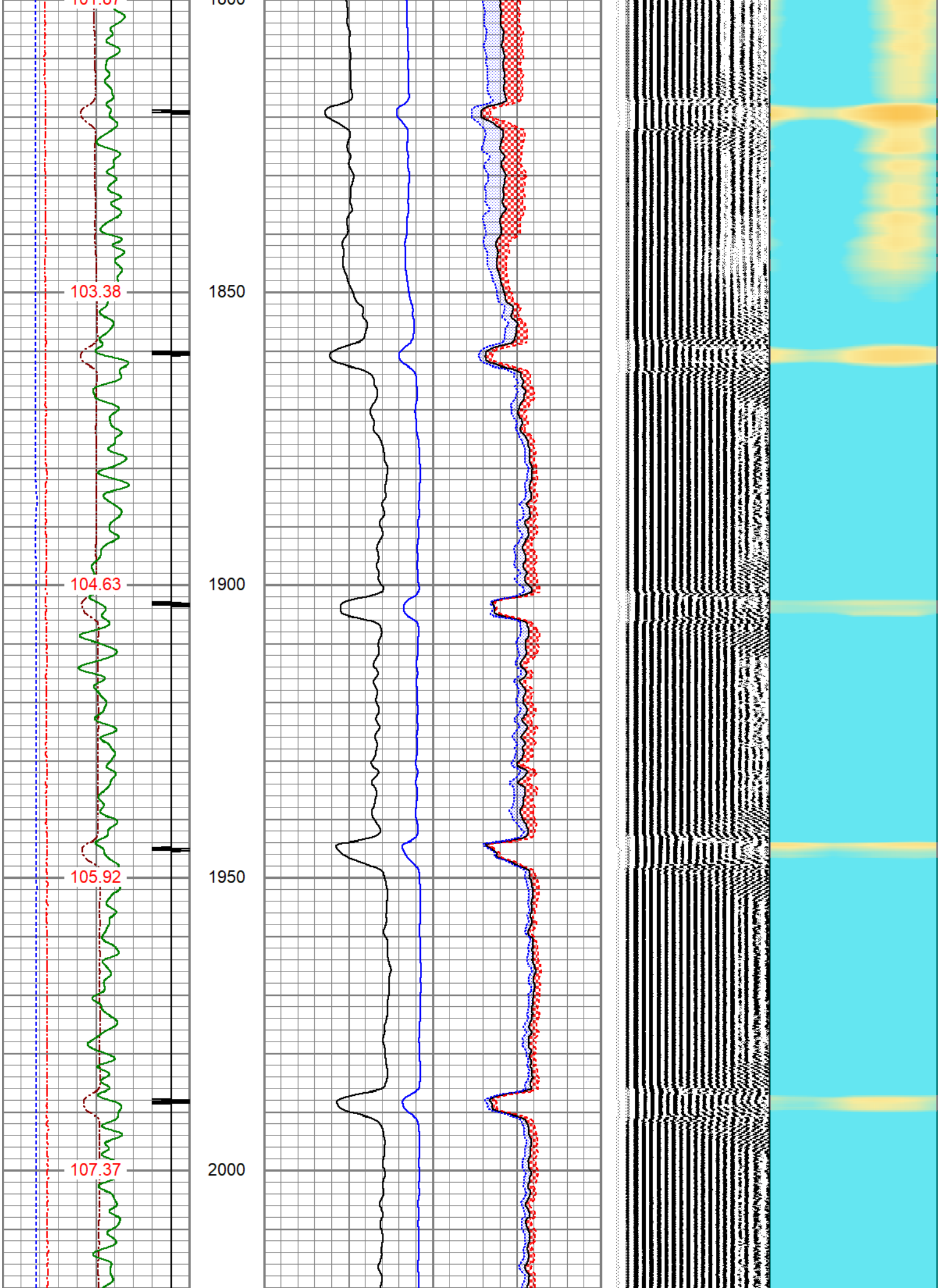


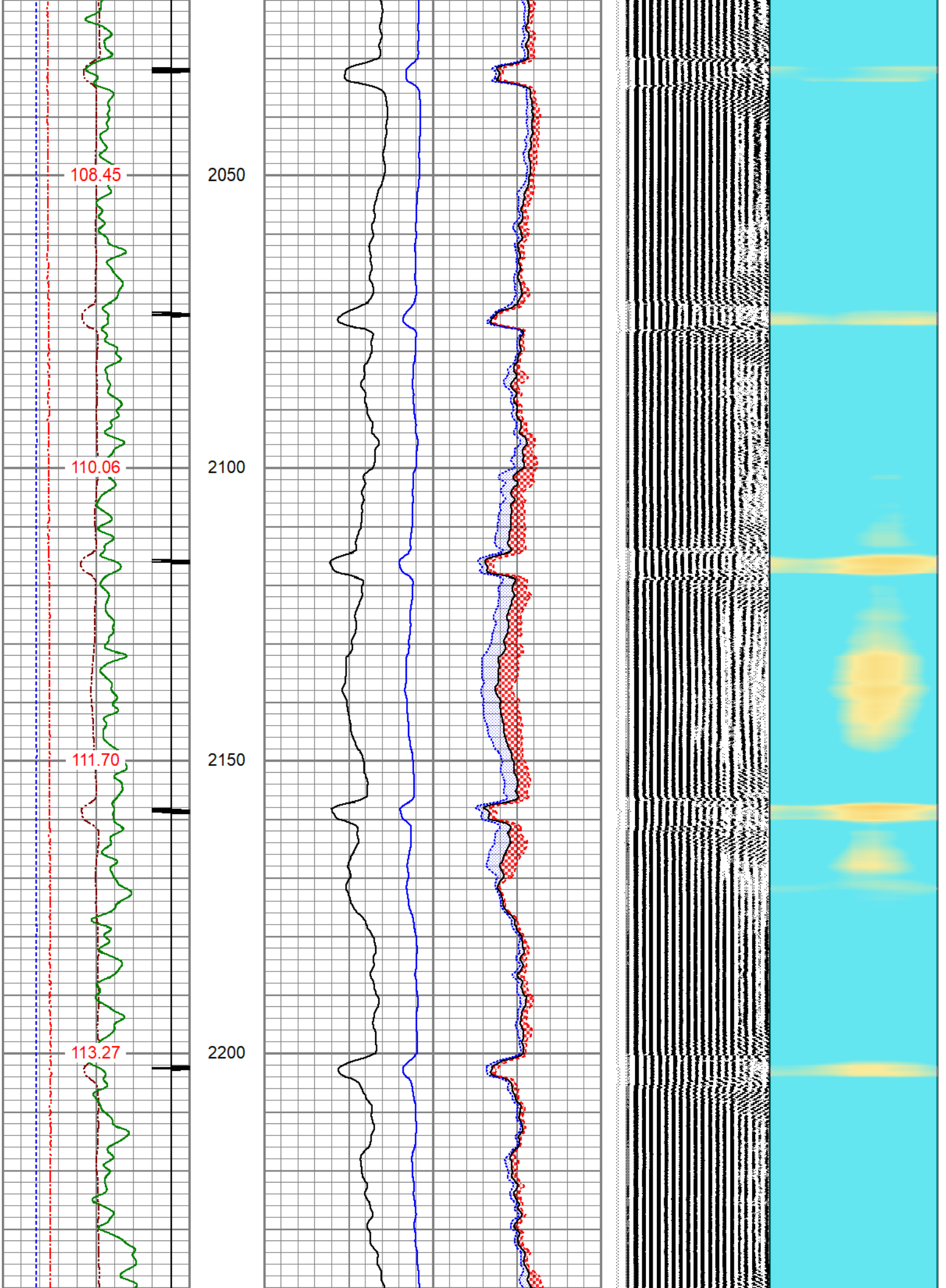


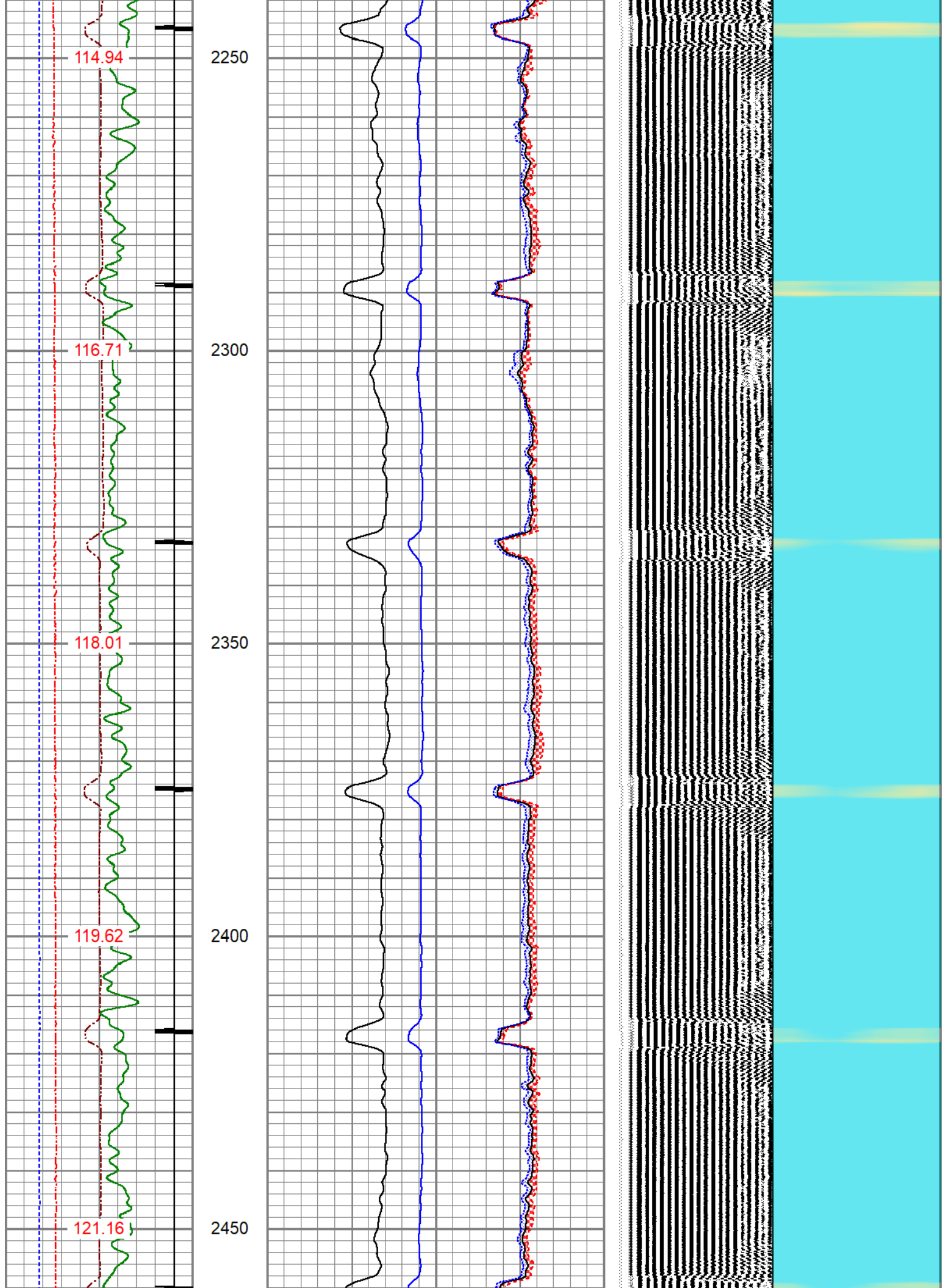


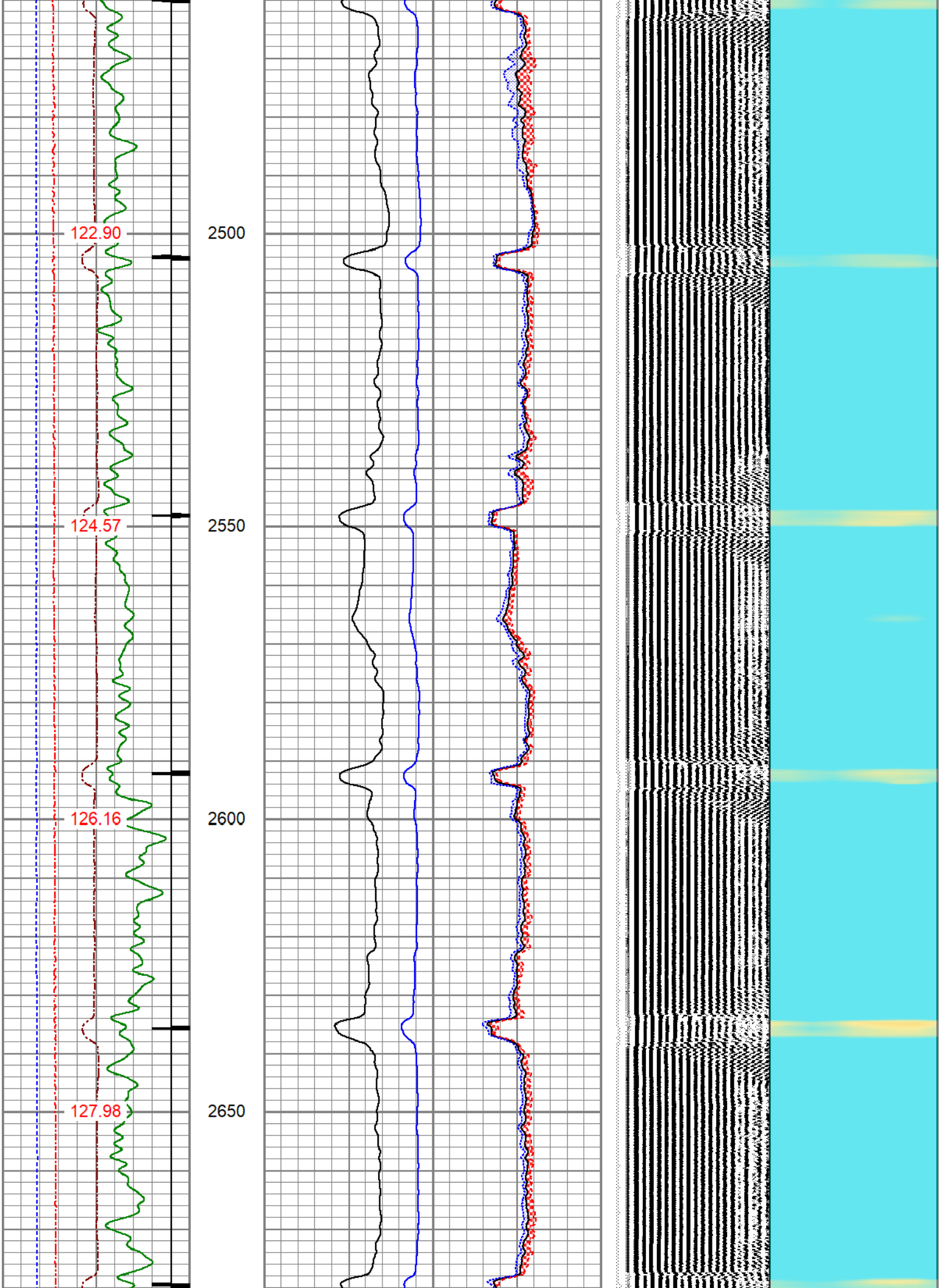


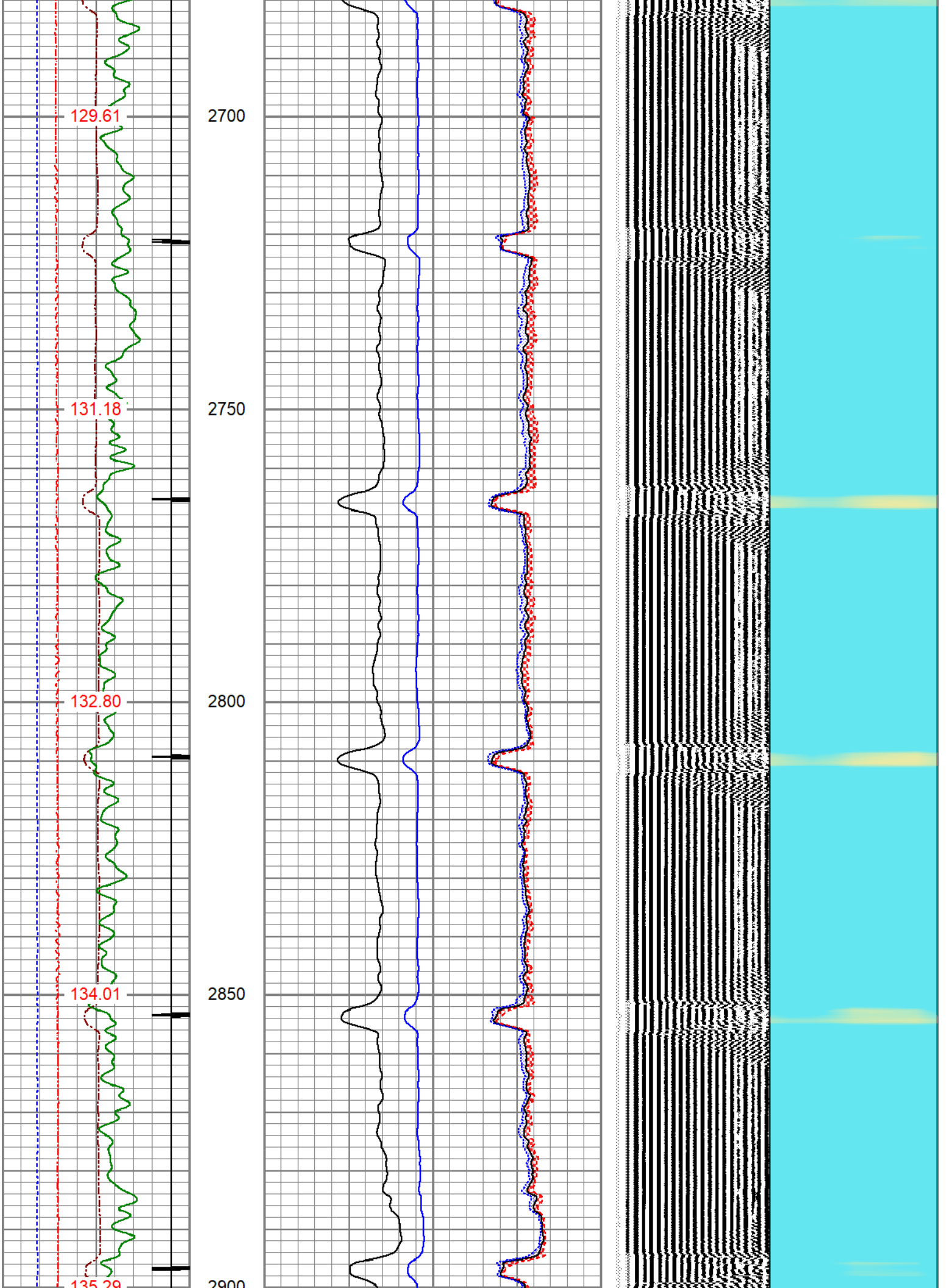


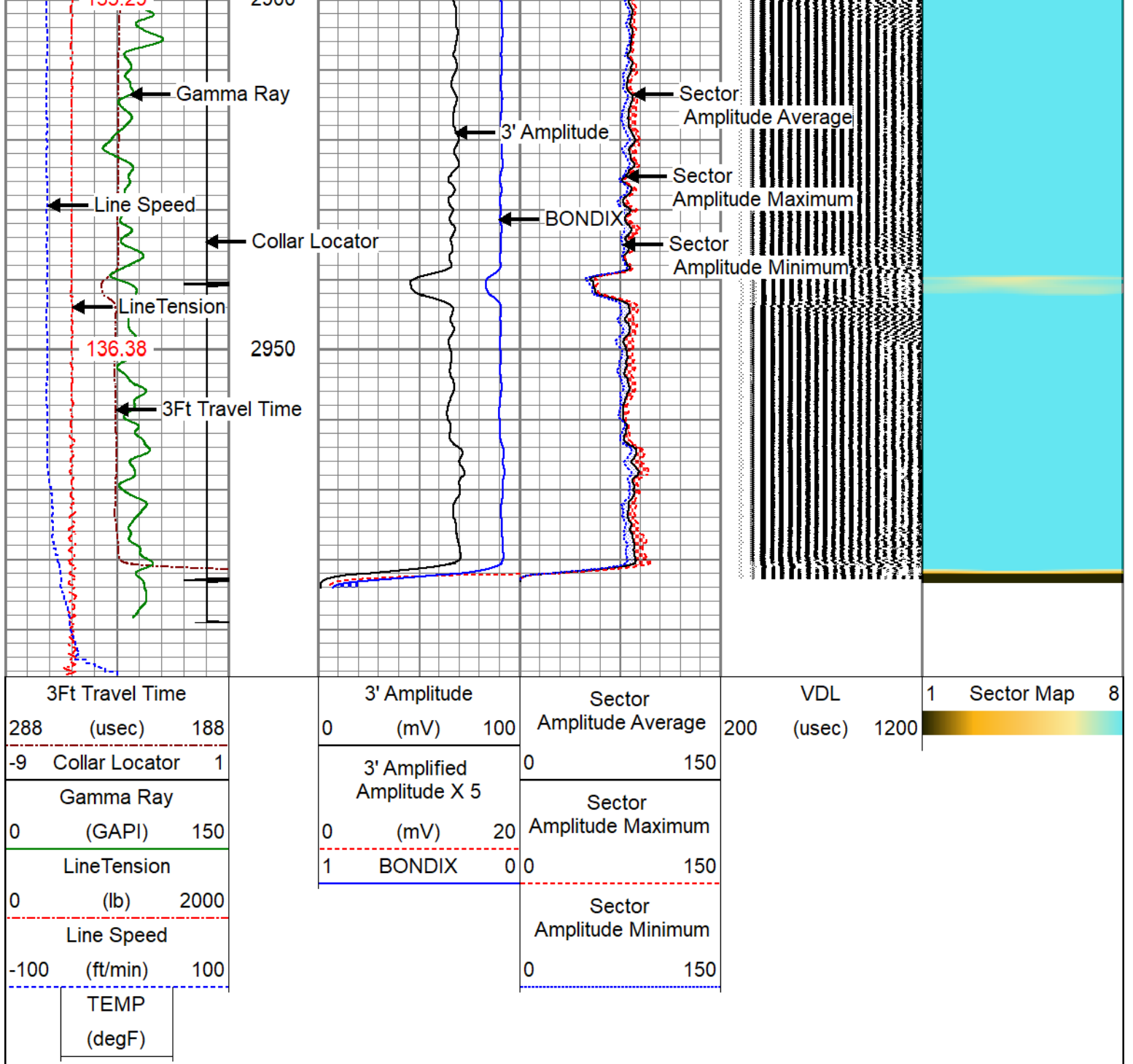











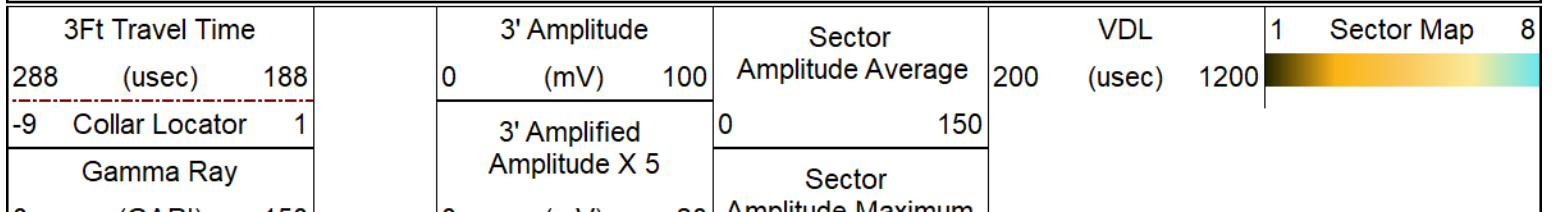




REPEAT SECTION

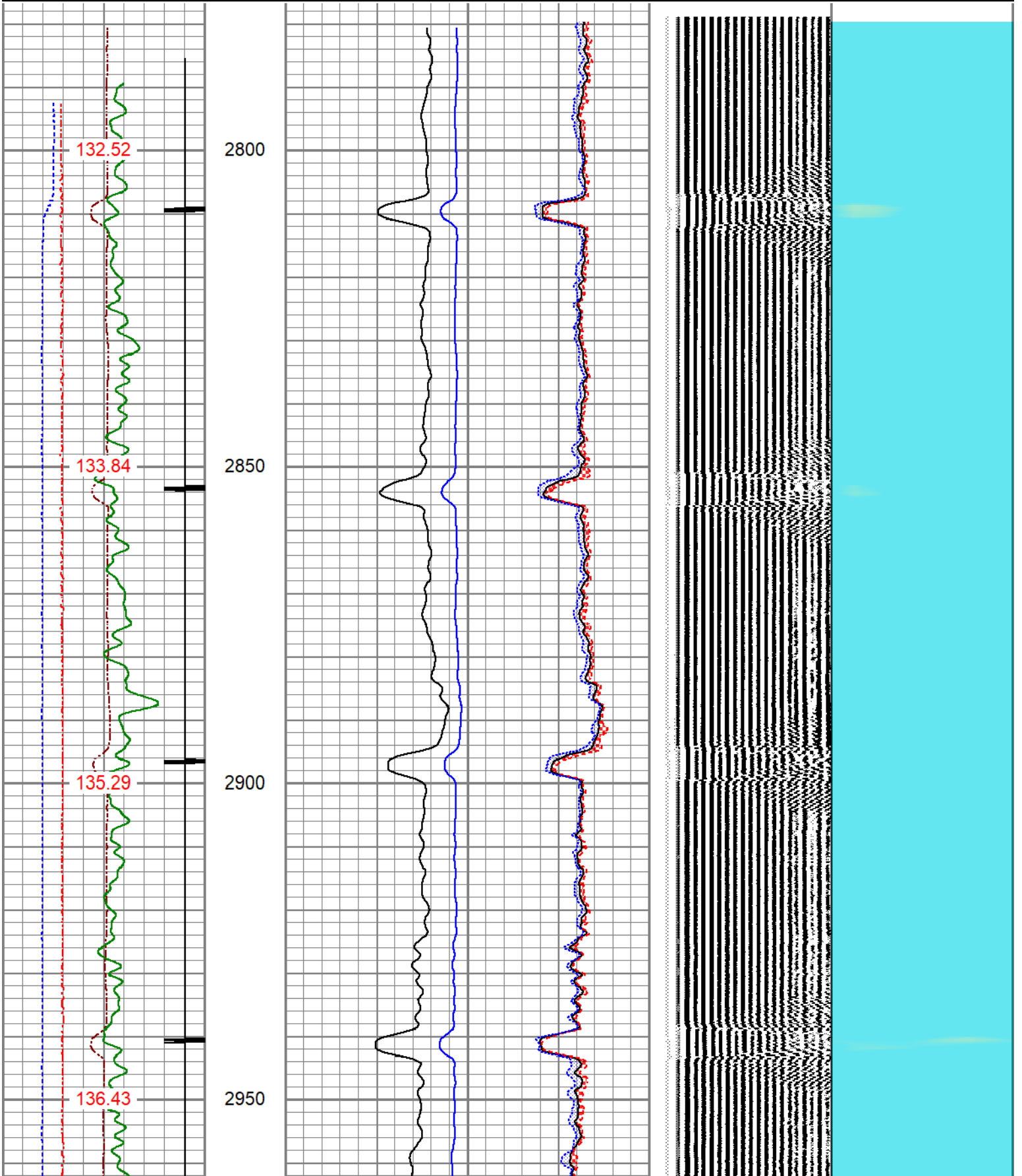
0 PSI APPLIED AT SURFACE

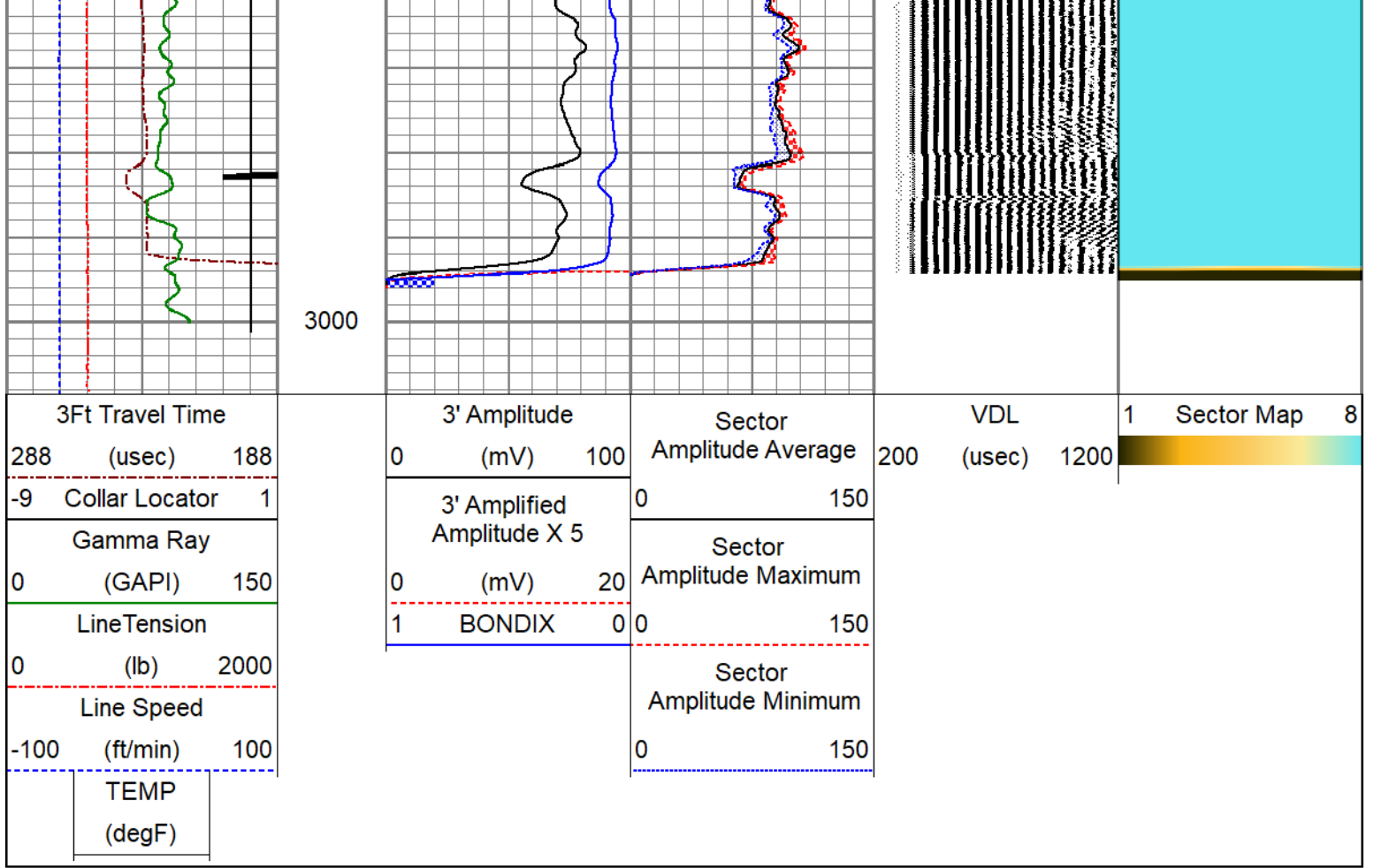
Database File anadarko_pullos james gu 2_0512309776_20210507_scbl.db
 Dataset Pathname pass6
 Presentation Format pinr_scbl
 Dataset Creation Fri May 07 08:57:04 2021
 Charted by Depth in Feet scaled 1:240



0	(GAPI)	150
Line Tension		
0	(lb)	2000
Line Speed		
-100	(ft/min)	100
TEMP		
(degF)		

0	(mV)	20	Amplitude Maximum	0	150
BONDIX					
1		0	Sector		
Amplitude Minimum					
0				0	150





Calibration Report

Database File anadarko_pullos james gu 2_0512309776_20210507_scbl.db
 Dataset Pathname pass9
 Dataset Creation Fri May 07 09:03:27 2021

Gamma Ray Calibration Report

Serial Number: 130588
 Tool Model: 275 Probe GCT
 Performed: Wed Dec 09 15:38:33 2020

Calibrator Value: 1.0 GAPI

Background Reading: 0.0 cps
 Calibrator Reading: 1.0 cps

Sensitivity: 0.7000 GAPI/cps

Segmented Cement Bond Log Calibration Report

Serial Number: FW1411-67
 Tool Model: RBL-DCT

Calibration Casing Diameter: 4.500 in
 Calibration Depth: 1256.792 ft

Master Calibration, performed Fri May 07 08:44:07 2021:

Raw (v)		Calibrated (mv)		Results	
Zero	Cal	Zero	Cal	Gain	Offset

3'	0.013	0.973	1.000	81.196	83.526	-0.045
CAL	0.013	1.293				
5'	0.012	0.957	1.000	81.196	84.907	-0.057
SUM						
S1	0.013	0.966	0.000	100.000	104.923	-1.327
S2	0.013	1.083	0.000	100.000	93.461	-1.183
S3	0.013	1.119	0.000	100.000	90.367	-1.133
S4	0.013	1.109	0.000	100.000	91.237	-1.156
S5	0.013	1.044	0.000	100.000	96.919	-1.220
S6	0.013	0.961	0.000	100.000	105.464	-1.330
S7	0.013	0.934	0.000	100.000	108.557	-1.369
S8	0.013	0.915	0.000	100.000	110.773	-1.389

Air Zero Calibration, performed Mon Aug 03 16:41:04 2020:

	Raw (v)		Calibrated (v)		Results	
	Zero		Zero		Offset	
3'	0.000		0.000		0.000	
5'	0.000		0.000		0.000	
SUM						
S1	0.000		0.000		0.000	
S2	0.000		0.000		0.000	
S3	0.000		0.000		0.000	
S4	0.000		0.000		0.000	
S5	0.000		0.000		0.000	
S6	0.000		0.000		0.000	
S7	0.000		0.000		0.000	
S8	0.000		0.000		0.000	

Temperature Calibration Report

Serial Number: FW1411-67
Tool Model: RBL-DCT
Performed: (Not Performed)

	Reference	Reading
Low Reference:	0.00 degF	0.00 degF
High Reference:	1.00 degF	1.00 degF

Gain: 1.00
Offset: 0.00
Delta Spacing: 1



PIONEER
Pioneer Energy Services

Company ANADARKO PETROLEUM CORP.
Well PULLOS JAMES GU 2
Field WATTENBERG
County WELD
State COLORADO