

LEGEND:

- = PROPOSED WELLHEAD.
○ = TARGET BOTTOM HOLE.
▲ = SECTION CORNERS LOCATED. (NAD 83)
◇ = TOP PRODUCTION ZONE.

NOTE:

- Distances referenced on plat to section lines are perpendicular.

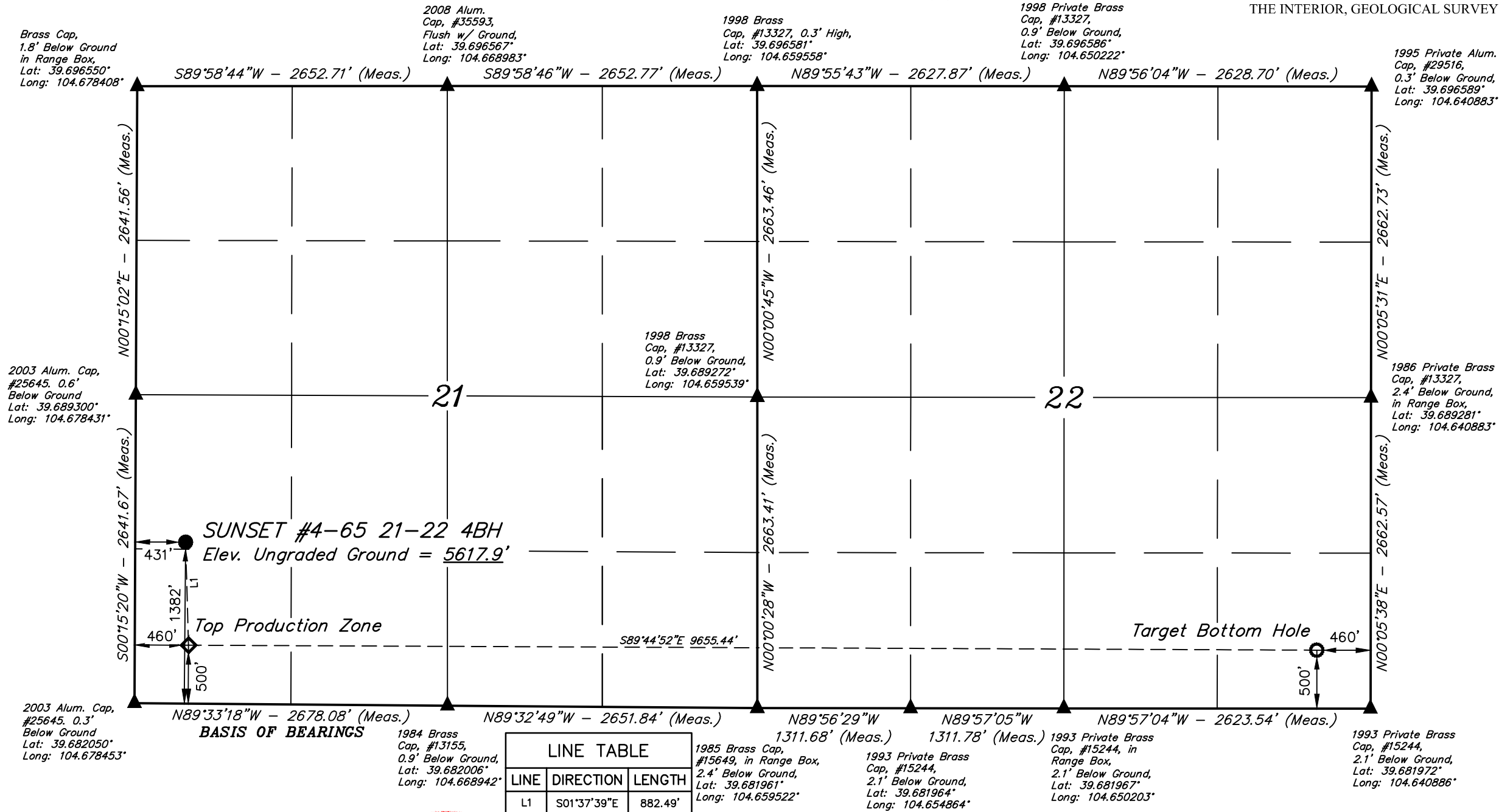
T4S, R65W, 6th P.M.

CRESTONE PEAK RESOURCES OPERATING LLC

SUNSET #4-65 21-22 4BH
NW 1/4 SW 1/4, SECTION 21, T4S, R65W, 6th P.M.
ARAPAHOE COUNTY, COLORADO

BASIS OF ELEVATION

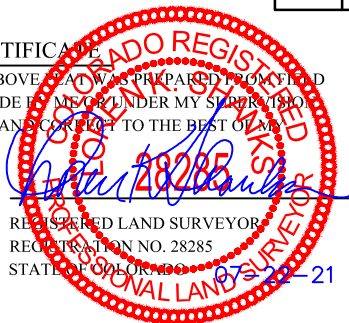
BENCHMARK 374 LOCATED ON THE SECTION LINE BETWEEN SECTIONS 12 & 13, T5S, R64W, 6th. P.M., TAKEN FROM 1988 PUBLISHED DATUM BY THE UNITED STATES DEPARTMENT OF THE INTERIOR, GEOLOGICAL SURVEY AS BEING 6054.61 FEET.



CERTIFICATION

THIS IS TO CERTIFY THAT THE ABOVE PLAT WAS PREPARED FROM FIELD NOTES OF ACTUAL SURVEYS MADE BY ME OR UNDER MY SUPERVISION, AND THAT THE SAME ARE TRUE AND CORRECT TO THE BEST OF MY KNOWLEDGE AND BELIEF.

REGISTERED LAND SURVEYOR
REGISTRATION NO. 28285
STATE OF COLORADO



NAD 83 (SURFACE LOCATION)	NAD 83 (TOP PRODUCTION ZONE)	NAD 83 (TARGET BOTTOM HOLE)
LATITUDE = 39°41'09.01" (39.685835)	LATITUDE = 39°41'00.29" (39.683414)	LATITUDE = 39°41'00.04" (39.683344)
LONGITUDE = 104°40'36.88" (104.676910)	LONGITUDE = 104°40'36.53" (104.676815)	LONGITUDE = 104°38'33.07" (104.642519)
NAD 27 (SURFACE LOCATION)	NAD 27 (TOP PRODUCTION ZONE)	NAD 27 (TARGET BOTTOM HOLE)
LATITUDE = 39°41'09.05" (39.685848)	LATITUDE = 39°41'00.34" (39.683427)	LATITUDE = 39°41'00.09" (39.683357)
LONGITUDE = 104°40'34.98" (104.676385)	LONGITUDE = 104°40'34.64" (104.676289)	LONGITUDE = 104°38'31.18" (104.641995)
STATE PLANE NAD 83 (CO. CEN.)	STATE PLANE NAD 83 (CO. CEN.)	STATE PLANE NAD 83 (CO. CEN.)
N: 1675743.84 E: 3231646.77	N: 1674862.29 E: 3231681.54	N: 1674926.03 E: 3241333.91
STATE PLANE NAD 27 (CO. CEN.)	STATE PLANE NAD 27 (CO. CEN.)	STATE PLANE NAD 27 (CO. CEN.)
N: 675736.21 E: 2231800.61	N: 674854.67 E: 2231835.39	N: 674918.57 E: 2241487.68



UELS, LLC
Corporate Office * 85 South 200 East
Vernal, UT 84078 * (435) 789-1017

SURVEYED BY	JONATHON BAYLIFF, J.C.	04-20-18	SCALE
DRAWN BY	L.C.S.	11-03-16	1" = 1000'

WELL LOCATION PLAT