

LEGEND:

- = PROPOSED WELLHEAD.
- = TARGET BOTTOM HOLE.
- ▲ = SECTION CORNERS LOCATED. (NAD 83)
- ◇ = TOP PRODUCTION ZONE.

NOTE:
 • Distances referenced on plat to section lines are perpendicular.

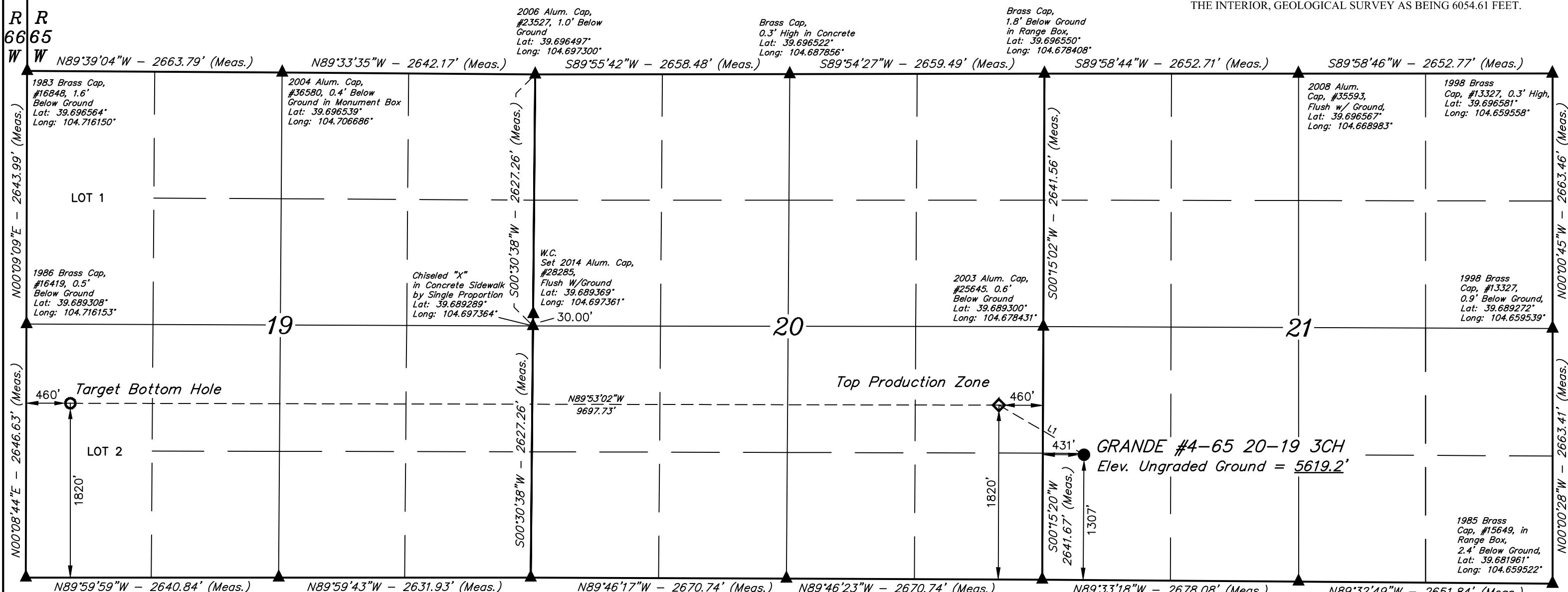
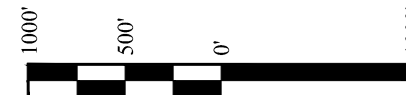
T4S, R65W, 6th P.M.

CRESTONE PEAK RESOURCES OPERATING LLC

GRANDE #4-65 20-19 3CH
 SW 1/4 SW 1/4, SECTION 21, T4S, R65W, 6th P.M.
 ARAPAHOE COUNTY, COLORADO

BASIS OF ELEVATION

BENCHMARK 374 LOCATED ON THE SECTION LINE BETWEEN SECTIONS 12 & 13, T5S, R64W, 6th. P.M., TAKEN FROM 1988 PUBLISHED DATUM BY THE UNITED STATES DEPARTMENT OF THE INTERIOR, GEOLOGICAL SURVEY AS BEING 6054.61 FEET.



LINE TABLE		
LINE	DIRECTION	LENGTH
L1	N59°45'06"W	1028.77'

BASIS OF BEARINGS	
2003 Alum. Cap, #26294, in Monument Box Lat: 39.682044° Long: 104.716153°	1984 Brass Cap, #13155, 0.9' Below Ground, Lat: 39.682006° Long: 104.668942°
2005 Alum. Cap, #25636, in Monument Box Lat: 39.682061° Long: 104.706775°	1984 Alum. Cap, #13155, 0.8' Below Ground in Asphalt Lat: 39.682078° Long: 104.697425°
2003 Alum. Cap, #25645, 0.3' Below Ground Lat: 39.682050° Long: 104.678453°	1984 Brass Cap, #13155, 0.9' Below Ground, Lat: 39.682006° Long: 104.668942°

PDOP = 1.3

REV: 4 07-22-21 Z.L. (SHL MOVE)

CERTIFICATION
 THIS IS TO CERTIFY THAT THE ABOVE PLAT WAS PREPARED FROM FIELD NOTES OF ACTUAL SURVEYS MADE BY ME OR UNDER MY SUPERVISION AND THAT THE SAME ARE TRUE AND CORRECT TO THE BEST OF MY KNOWLEDGE AND BELIEF.

[Signature]
 REGISTERED LAND SURVEYOR
 REGISTRATION NO. 28285
 STATE OF COLORADO

NAD 83 (SURFACE LOCATION)	NAD 83 (TOP PRODUCTION ZONE)	NAD 83 (TARGET BOTTOM HOLE)
LATITUDE = 39°41'08.27" (39.685629) LONGITUDE = 104°40'36.88" (104.676910)	LATITUDE = 39°41'13.37" (39.687047) LONGITUDE = 104°40'48.26" (104.680071)	LATITUDE = 39°41'13.36" (39.687043) LONGITUDE = 104°42'52.27" (104.714519)
LATITUDE = 39°41'08.31" (39.685642) LONGITUDE = 104°40'34.99" (104.676385)	LATITUDE = 39°41'13.41" (39.687060) LONGITUDE = 104°40'46.36" (104.679545)	LATITUDE = 39°41'13.40" (39.687055) LONGITUDE = 104°42'50.37" (104.713992)
STATE PLANE NAD 83 (CO. CEN.) N: 1675668.86 E: 3231647.27	STATE PLANE NAD 83 (CO. CEN.) N: 1676177.14 E: 3230753.18	STATE PLANE NAD 83 (CO. CEN.) N: 1676090.06 E: 3221058.72
STATE PLANE NAD 27 (CO. CEN.) N: 675661.23 E: 2231801.11	STATE PLANE NAD 27 (CO. CEN.) N: 676169.49 E: 2230907.02	STATE PLANE NAD 27 (CO. CEN.) N: 676082.25 E: 2221212.64

UINTEAH
 ENGINEERING & LAND SURVEYING

UELS, LLC
 Corporate Office * 85 South 200 East
 Vernal, UT 84078 * (435) 789-1017

SURVEYED BY	JONATHON BAYLIFF, J.C.	04-20-18	SCALE
DRAWN BY	L.C.S.	11-03-16	1" = 1000'

WELL LOCATION PLAT