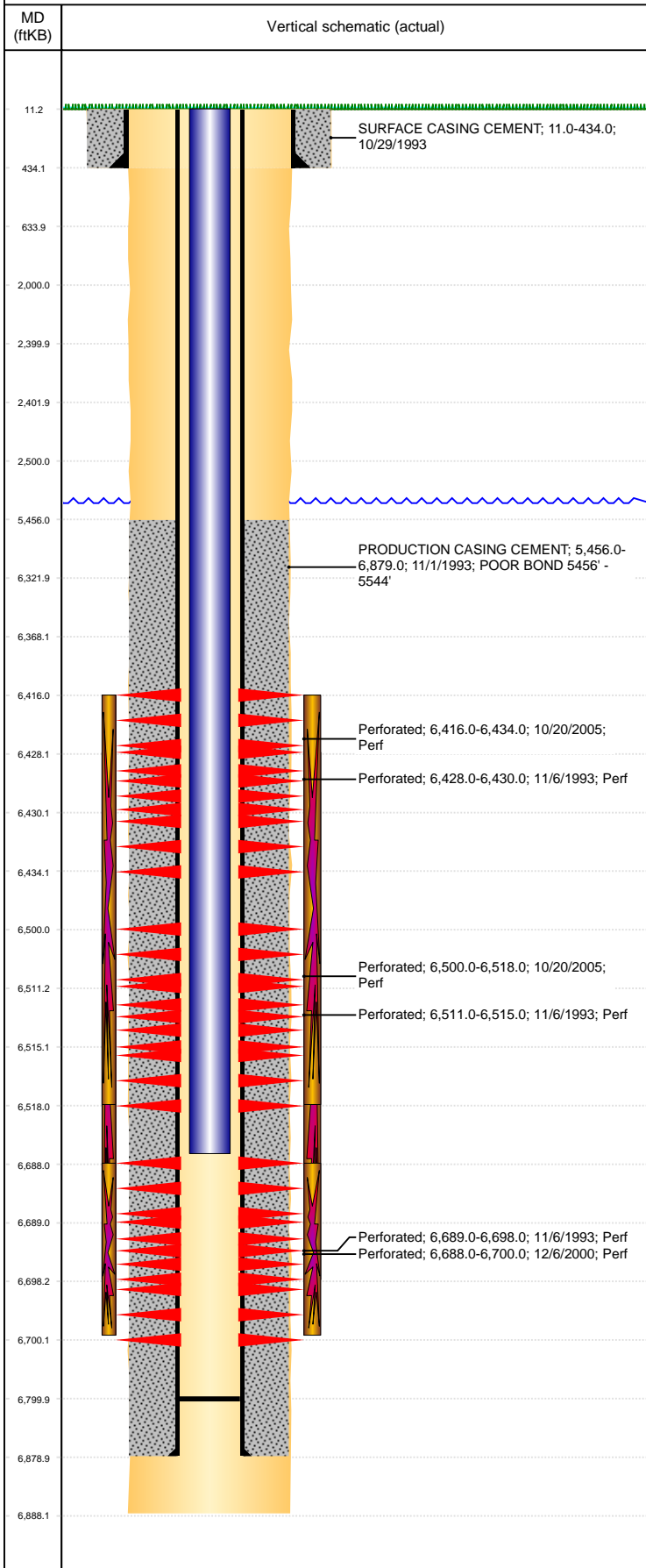


**Well Name: AMIGO FARMS 01-12**

VERTICAL, ORIGINAL HOLE, 8/3/2021 10:55:07 AM



Well Header									
API 05-123-17530			Business Unit DJ BASIN			District 15		Well Config VERTICAL	
KB - GL / MSL (ft... 11.00		Spud Date 10/28/1993		P & A Date		Well Production Status SI			SoRT No
Comment									
Surface Location (Congressional)									
Qtr 3 NW	Qtr 4 SW	Section 1	Twnshp 4	Twنش... N	Range 64	Rng E/... W	Actual Latitude (°) 40.33959023		Actual Longitude (°) -104.50582762
Wellbore Sections									
Section Des			Size (in)			Act Top, MD (ftKB)		Act Btm, MD (ftKB)	
SURFACE			12 1/4			11		434	
PRODUCTION			7 7/8			434		6,888	
Casing Strings									
Csg Des			Run Date		OD (in)	Wt/Len (lb/ft)	Grade	Top, MD (ftKB)	MD (ftKB)
Surface			10/29/1993		8 5/8	23.00		11.0	434.0
Production			11/1/1993		3 1/2	7.70	M75	11.0	6,879.0
Cement									
Des					Start Date		Top (ftKB)		Btm (ftKB)
SURFACE CASING CEMENT					10/29/1993		11.0		434.0
PRODUCTION CASING CEMENT					11/1/1993		5,456.0		6,879.0
Zone Statuses									
Zone Name		Status Date		Status	Fluid Type	Job			Prod Method
NIOBRARA-CO...		11/27/1993		PR	Water	DRILLING/COMPLETION - ORIGINAL, 10/28/199...			Flowing
NIOBRARA-CO...		6/17/2009		PR		COMMINGLE ZONES, 5/1/2008 07:00			
NIOBRARA		5/7/2008		PR	Water				Flowing
NIOBRARA		6/17/2009		PR					
CODELL		6/17/2009		PR	Water				Flowing
CODELL		11/29/2016		SI					
Perforation Data									
Linked Zone			Bnch/Stg	Entered Shot Total	Top (ftKB)		Btm (ftKB)		Date
NIOBRARA, ORIGINAL HOLE			A	108	6,416.00		6,434.00		10/20/2005
NIOBRARA, ORIGINAL HOLE				2	6,428.00		6,430.00		11/6/1993
NIOBRARA, ORIGINAL HOLE			B	108	6,500.00		6,518.00		10/20/2005
NIOBRARA, ORIGINAL HOLE				4	6,511.00		6,515.00		11/6/1993
CODELL, ORIGINAL HOLE				48	6,688.00		6,700.00		12/6/2000
CODELL, ORIGINAL HOLE				9	6,689.00		6,698.00		11/6/1993
Stimulation Intervals									
Zone				Start Date		Top (ftKB)		Btm (ftKB)	
NIOBRARA, ORIGINAL HOLE				11/3/2005		6,416.0		6,518.0	
NIOBRARA-CODELL, ORIGINAL HOLE				11/17/1993		6,428.0		6,698.0	
CODELL, ORIGINAL HOLE				12/8/2000		6,688.0		6,700.0	
Other In Hole									
Run Date		Des			Make		OD (in)	Top (ftKB)	Btm (ftKB)
Logs									
Date		Type					Top, MD (ftKB)		Btm, MD (ftKB)
11/1/1993		Compensated Density					3,990.0		6,886.0
11/1/1993		Induction					434.0		6,886.0
11/6/1993		CEMENT BOND					3,990.0		6,886.0
10/8/2005		CBL/CCL/GR					5,200.0		6,779.0
10/12/2011		GYRO					11.0		6,600.0
Plug Back Total Depths									
Date		Type			Com				Depth (ftKB)
11/1/1993									6,830.0
5/2/2008		FILL			CLEANED OUT SAND PLUG W/ SHOE TO 6800', SHOE KEPT...				6,800.0