



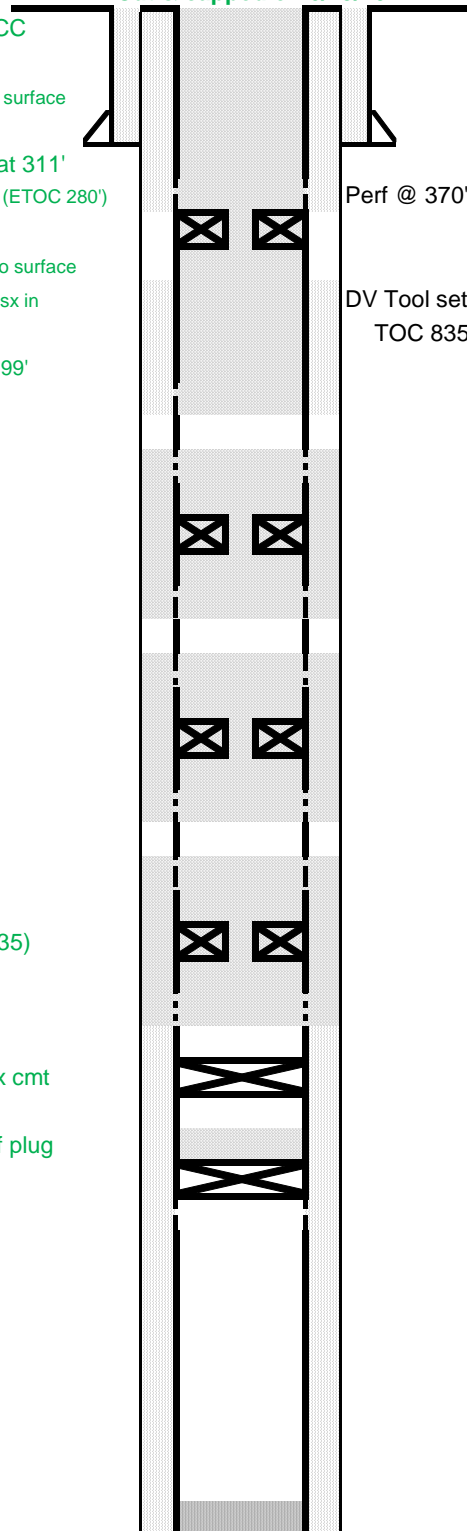
**WELLBORE DIAGRAM**  
PROPOSED WBD

1980' FSL 660' FEL

No PR Sussex  
Deepest WW within 1 Mile: 1321'  
Fox Hills: 1053'-1258'  
Upper Pierre Base: 2328'

Cut and Cap (Well Name,  
API, Legal Desc.) 4-6'  
below ground level.  
Cut & capped on 6/29/2021

Topped off w/ 5 sx Class G +3%CC  
Pump 25 sx Class G+3%CC from 280' to surface  
Drilled cement to 407', set CICR at 311'  
Pump 30 sx thru CICR, leave 5 sx on top (ETOC 280')  
Pump 112 sx Class G+2%CC from 873' to surface  
Squeeze 42 sx behind casing, leaving 70sx in  
Tag plug at 884'  
Pump 56 sx Class G+2%CC from 1399'  
ETOC @ 650'  
Perf @ 2200'  
Set CICR @ 2300'  
Pump 30 sx thru CICR (thixo)  
leave 5 sx on top, ETOC 2194'  
Perf @ 2400'  
Perf @ 4700'  
Set CICR @ 4814'  
Pump 30 sx thru CICR (thixo)  
leave 5 sx on top, ETOC 4699'  
Perf @ 4900'  
Perf @ 6940'  
Set CICR @ 7048'  
Pump 40 sx thru CICR (Thermal 35)  
leave 10 sx on top, ETOC 6874'  
Perf @ 7140'  
Set CIBP at 7400', dump bail 2 sx cmt  
Pump 25 sx Thermal 35 on top of plug  
from 8062' - 7465'  
CIBP @ 8125' w/ 2 sx cmt



TVD = PBTVD =  
MD = 8370' PBMD = 8349'

**Operator:** KP Kauffman Company Inc  
**Well Name:** Freeman D 1  
**Lease Number:**  
**Location:** NESE 31 1S 66W  
**Field:** Bugle - #7800  
**County, State:** Adams, CO  
**API Number:** 05-001-06964  
**Diagram Date:** 7/27/2021  
**Lat/Long** 39.919854 -104.811048

KB 5098'  
GL 5088'  
Spud Date: 1/8/1975

Perf @ 370', squeezed 135 sx to surface  
DV Tool set @ 1357' cmt w/ 250 sx  
TOC 835' (CBL)

**Surface Casing :**  
8-5/8" 24# set @ 271'  
Cmt w/ 300 sx + 3%CC

**Production Casing :**  
4-1/2" 11.6# set @ 8369'  
Cmt'd w/ 300 sx 50/50 poz  
Calc TOC @ 6711' w/ 7-7/8" hole

**Tubing Detail:**

**Formation Tops:**

Base of Fox Hills	1258' DWR
Sussex	4897'
Niobrara	7465'
Carlile	7923'
Greenhorn	7973'
Bentonite	8058'
D Sand	8166'
J Sand	8211'

Perforations	Top	Bottom
D Sand	8174'	8182'

175  
7290  
6965