

## Inspection Photos

Location Name:TEP ROCKY MOUNTAIN LLC FEDERAL-66S96W /36NWNW

Location ID: 335189



Photo #4535 from entrance to location.



Photo #4536 from entrance to location.



**COLORADO**  
Oil & Gas Conservation  
Commission  
Department of Natural Resources



## Inspection Photos

Location Name:TEP ROCKY MOUNTAIN LLC FEDERAL-66S96W /36NWNW

Location ID: 335189



**Photo #4537 Location lacks stabilization.**



**Photo #4538 Location lacks stabilization.**



## Inspection Photos

Location Name:TEP ROCKY MOUNTAIN LLC FEDERAL-66S96W /36NWNW

Location ID: 335189



**Photo #4539** No form of tracking BMP located at entrance to location.



**Photo #4540** Sediment and debris that over ran the access road.



## Inspection Photos

Location Name:TEP ROCKY MOUNTAIN LLC FEDERAL-66S96W /36NWNW

Location ID: 335189



**Photo #4541 Drainage that intersects access road.**



**Photo #4542 Drainage that intersects access road.**



## Inspection Photos

Location Name:TEP ROCKY MOUNTAIN LLC FEDERAL-66S96W /36NWNW

Location ID: 335189



**Photo #4543 Sediment and debris that over ran the access road.**



**Photo #4544 Sediment choking off vegetation.**



**COLORADO**  
Oil & Gas Conservation  
Commission  
Department of Natural Resources



## Inspection Photos

Location Name:TEP ROCKY MOUNTAIN LLC FEDERAL-66S96W /36NWNW

Location ID: 335189



**Photo #4545 Sediment appears to have been bladed to the side of access road.**



**Photo #4546 Sediment appears to have been bladed to the side of access road.**



## Inspection Photos

**Location Name:TEP ROCKY MOUNTAIN LLC FEDERAL-66S96W /36NWNW**

**Location ID: 335189**



**Photo #4549 Ditch that sediment was transported down and on to location #335096.**

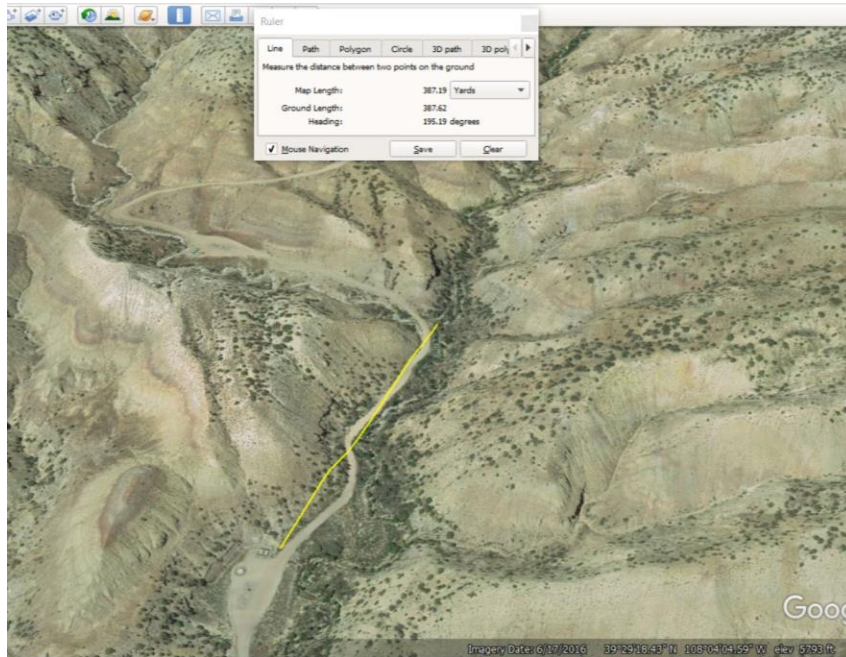


**Photo #4550 Sediment and debris encroaching on production equipment.**





**Inspection Photos**  
**Location Name:TEP ROCKY MOUNTAIN LLC FEDERAL-66S96W /36NWNW**  
**Location ID: 335189**



**Sediment has been transported approximately 380 yards on to location #335096.**