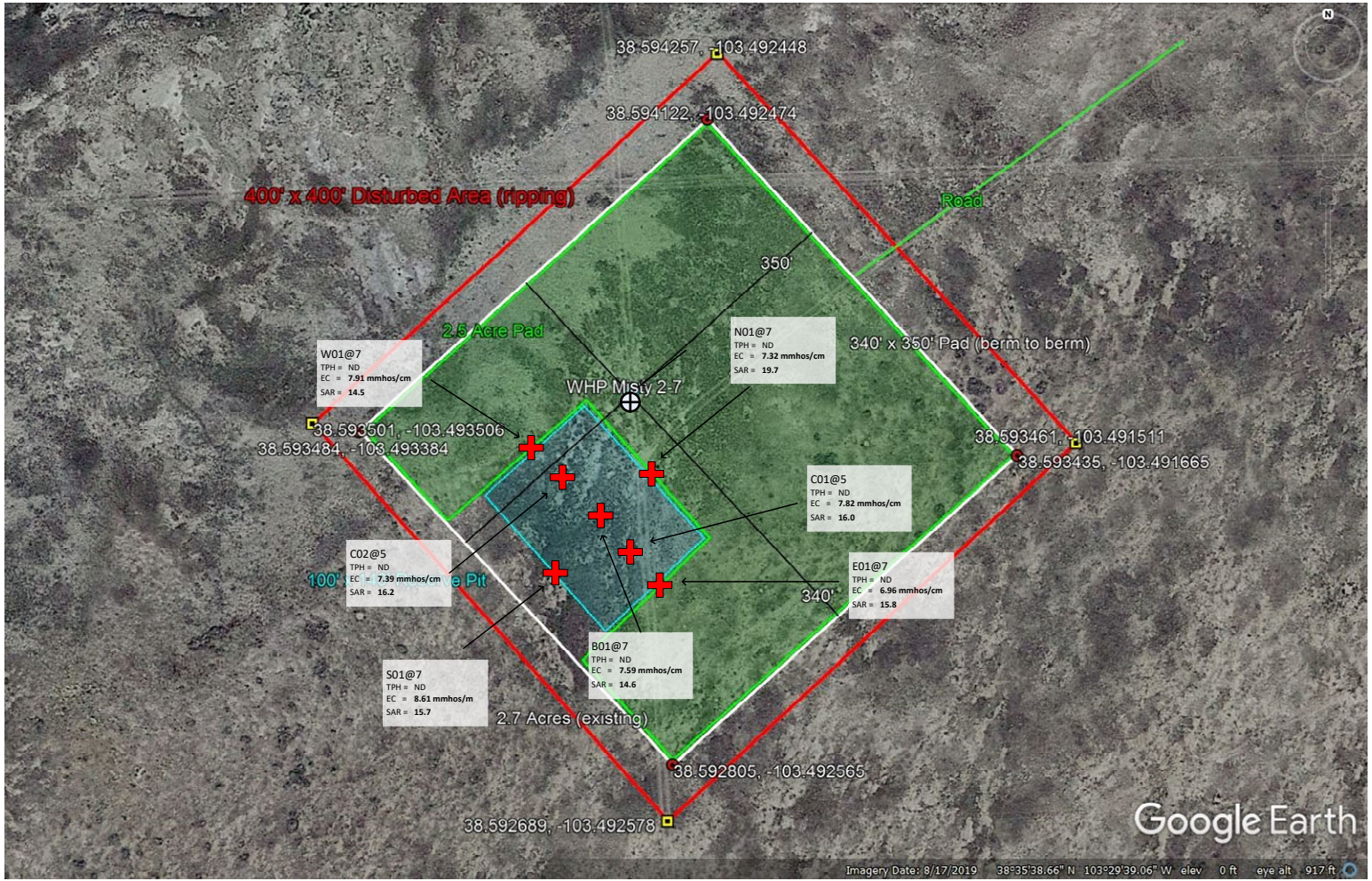


Koda Exploration, LLC. WHP Misty 2-7 NWNE, Sec. 7, T16S, R54W, 6th PM Soil Sample Location Figure



Legend

- Pad Boundary
- Construction Boundary
- Pit Boundary
- + Sample Location
- + Wellhead

Sample Results Legend:

- TPH = Total Volatile and Extractable Petroleum Hydrocarbons
- EC = Electrical Conductivity
- SAR = Sodium Adsorption Ratio
- ND = Non detect, laboratory results below the reporting limit
- mmhos/cm = millimhos/centimeter
- BOLD** = Result above Table 915-1 standards

