

Final Reclamation Inspection

July 13, 2021

Operator: PDC ENERGY INC - 69175

Location ID: 331991

Inspection Document #: 701900005

Weld County, CO

SENW Section 36 T4N R68W

Logan McConnell, Corey McDonough
Reclamation Contractor, COGCC



COLORADO

**Oil & Gas Conservation
Commission**

Department of Natural Resources

Inspection Photos
Location Name: GADDIS #22-36
Location ID: 331991



Photo 1. 2019 aerial imagery illustrates the well location, well location access road and associated tank battery.

Inspection Photos
Location Name: GADDIS #22-36
Location ID: 331991

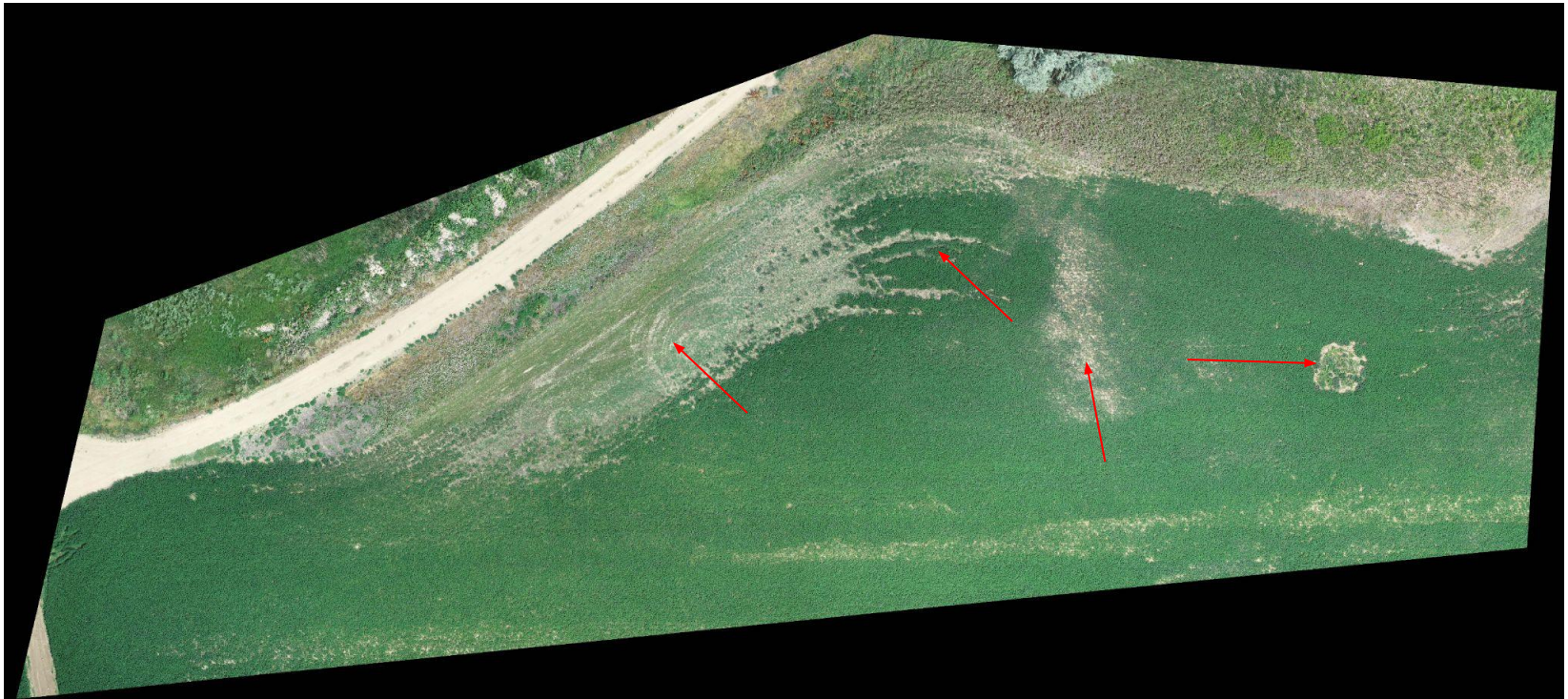


Photo 2. Overview photo taken of well head and associated access road using a drone. Photo illustrates the well location and various well location access roads do not comply with rule 1004. Crops have not been re-established to pre disturbance levels.

Inspection Photos
Location Name: GADDIS #22-36
Location ID: 331991



Photo 3. Drone photo taken south of well head displaying stunted growth within the well head footprint. Photo also displays reference site.

Inspection Photos
Location Name: GADDIS #22-36
Location ID: 331991



Photo 4. Photo shows detached crop plant in hand at the tank battery. Crop was harvested before site visit, however unharvested crop stalks at the reference site and tank battery were the same height.

Inspection Photos
Location Name: GADDIS #22-36
Location ID: 331991



Photo 5. Photo taken from the associated tank battery location, facing West. See comments under Photo 4.



Photo 6. Photo taken from the associated tank battery location, facing North. See comments under Photo 4.

Inspection Photos
Location Name: GADDIS #22-36
Location ID: 331991



Photo 7. Photo taken from the associated tank battery location, facing East. See comments under Photo 4.



Photo 8. Photo taken from the associated tank battery location, facing South. See comments under Photo 4.

Inspection Photos
Location Name: GADDIS #22-36
Location ID: 331991



Photo 9. Reference photo was taken north of the tank battery facing northwest.