

# Inspection Photos

7/21/2021

Operator: CAERUS PICEANCE LLC - 10456

Location ID: 414880

Garfield County, CO

Aaron Trujillo

NW Reclamation Specialist

COGCC

Inspection Photos  
Operator Name: CAERUS PICEANCE LLC - 10456  
Location ID: 414880

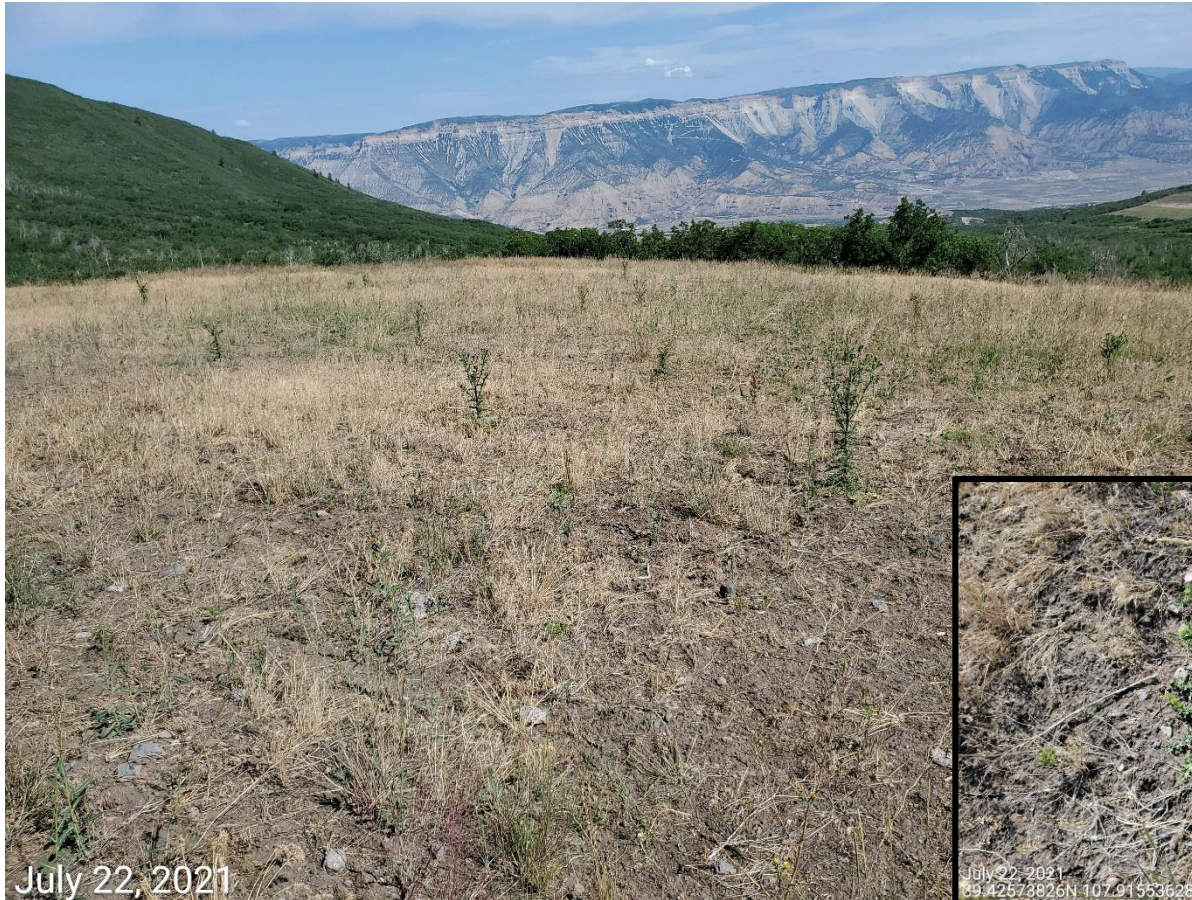


**Photo 1:** On 7/22/2021, Reclamation Specialist mapped the Location with the use of a small UAS. Photo shows aerial image of the location.





Inspection Photos  
Operator Name: CAERUS PICEANCE LLC - 10456  
Location ID: 414880



**Photo 2:** Photo taken from the Location. Photo provides example of noxious weeds observed remaining on the Location. Noxious weeds observed appears to be Plumeless thistle, houdstongue and bindweed.





Inspection Photos  
Operator Name: CAERUS PICEANCE LLC - 10456  
Location ID: 414880



**Photo 3:** Photo shows example of areas on the north/northeast end of the Location where desirable plant germination/establishment was not evident, or not progressing towards 1004 Standards.





Inspection Photos  
Operator Name: CAERUS PICEANCE LLC - 10456  
Location ID: 414880



**Photo 3.b:** It was observed that areas on the north/northeast end of the Location is not progressing towards 1004 standards. Photo shows example of areas observed.





## Inspection Photos

Operator Name: CAERUS PICEANCE LLC - 10456

Location ID: 414880



**Photo 4:** Photo taken from the east end of the Location, facing south. Photo shows example of areas observed where reclamation is progressing towards 1004 standards.



**COLORADO**  
Oil & Gas Conservation  
Commission  
Department of Natural Resources



Inspection Photos  
Operator Name: CAERUS PICEANCE LLC - 10456  
Location ID: 414880



**Photo 5.b:** Photo shows areas of the Location's disturbance, on the east side of the fence line, that is not progressing towards 1004 standards.





Inspection Photos  
Operator Name: CAERUS PICEANCE LLC - 10456  
Location ID: 414880



**Photo 6:** Photo shows noxious weed (bindweed) establishment observed on the northwest end of the Location.





Inspection Photos  
Operator Name: CAERUS PICEANCE LLC - 10456  
Location ID: 414880



July 22, 2021  
39.42476625N 107.91635581W

**Photo 7:** Photo shows noxious weed establishment (Plumeless thistle) along the fence on the south end of the Location.





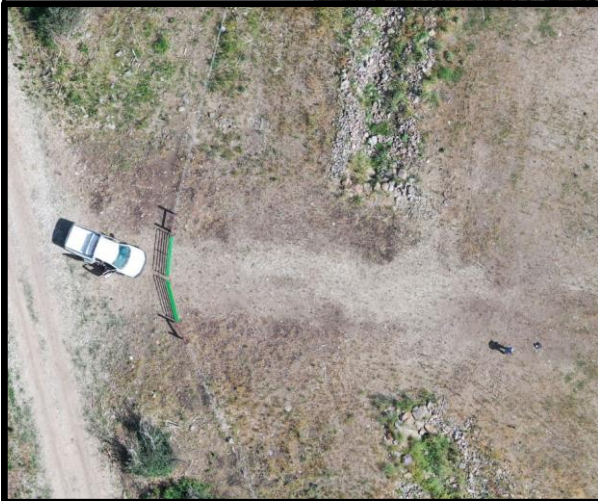
Inspection Photos  
Operator Name: CAERUS PICEANCE LLC - 10456  
Location ID: 414880



**Photo 8:** Shows stormwater diversion ditch remaining on the west end of the Location. Ditch should be removed/reclaimed if no longer required; ditch and culvert will required removal for site to receive a passing final inspection.



Inspection Photos  
Operator Name: CAERUS PICEANCE LLC - 10456  
Location ID: 414880



7 8129301W



**Photo 9:** Photo taken from the Location entrance on the east end of the Location. Photo shows areas of the entrance has not been reclaimed in accordance with 1004 Rules; gravel/road base and culvert remaining. Areas require reclamation.



Inspection Photos  
Operator Name: CAERUS PICEANCE LLC - 10456  
Location ID: 414880



July 22, 2021  
39.42393512N 107.91468847W

**Photo 10:** Photo taken from the south end of the Location, facing north. Photo shows the former access road leading into the Location has not been entirely reclaimed. Road requires reclamation.



**COLORADO**  
Oil & Gas Conservation  
Commission  
Department of Natural Resources