

Inspection Photos
John Weigandt Consolidation
Spill ID 465402 (AC)



Photo 1 – Spill excavation area.



Photo 2 – Spill excavation area.

Inspection Photos
John Weigandt Consolidation
Spill ID 465402 (AC)



Photo 3 – Soil Sample Collection Points.

Inspection Photos
John Weigandt Consolidation
Spill ID 465402 (AC)



Photo 4 – Soil Sample Collection Points

Inspection Photos
John Weigandt Consolidation
Spill ID 465402 (AC)



Photo 5 – Soil Sample Collection Points.

Inspection Photos
John Weigandt Consolidation
Spill ID 465402 (AC)

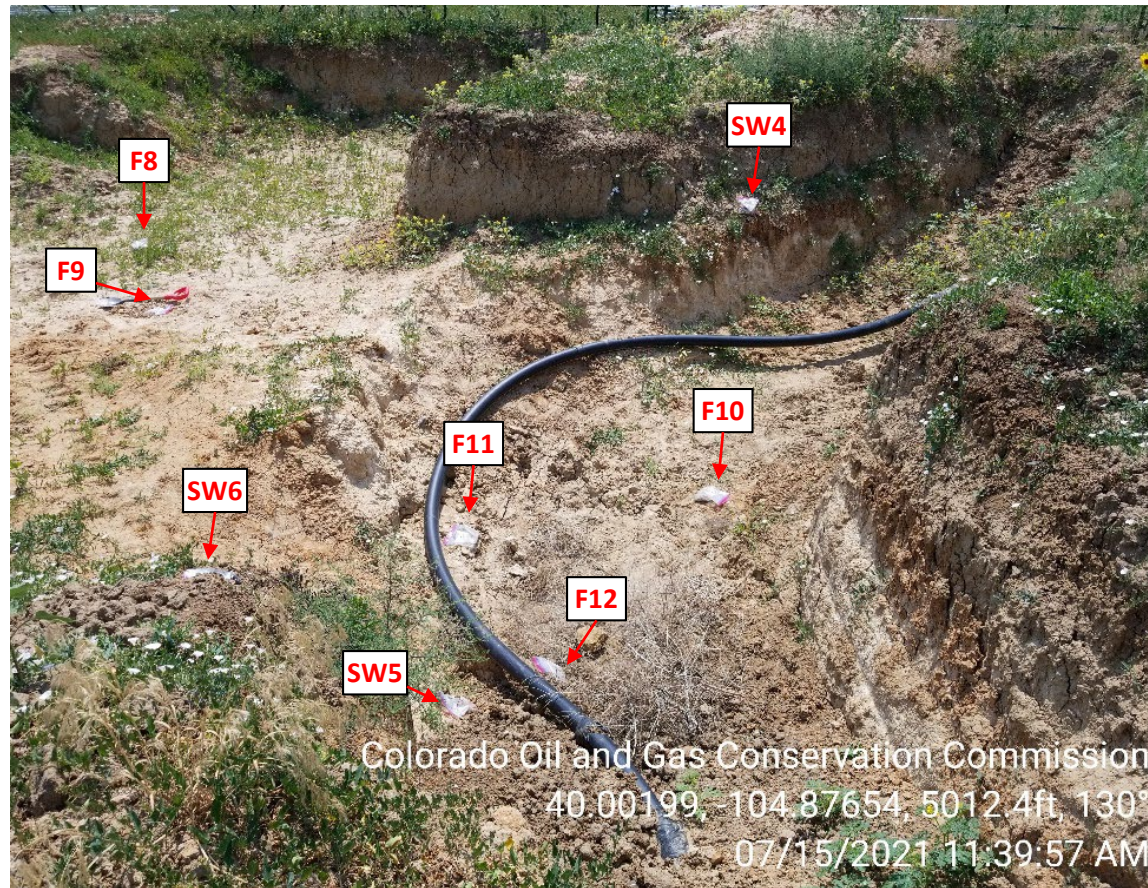


Photo 6 – Soil Sample Collection Points.

Inspection Photos
John Weigandt Consolidation
Spill ID 465402 (AC)



Photo 7– Stained soil observed on excavation floor.



Photo 8 – Stained soil observed on excavation floor.

Inspection Photos
John Weigandt Consolidation
Spill ID 465402 (AC)



Photo 9 – Floor sample 1 (F1) location.

PID reading: 593 ppm

TPH (lab): 38,699 mg/kg



Photo 10 – Floor sample 9 (F9) location.

PID reading: 593 ppm

TPH (lab): 38,699 mg/kg

Inspection Photos
John Weigandt Consolidation
Spill ID 465402 (AC)



Photo 11 – Floor sample 5 (F5) location. Sample sent to lab for inorganics – results pending.



Photo 12 – Floor sample 8 (F8) location. Sample sent to lab for inorganics – results pending.

Inspection Photos
John Weigandt Consolidation
Spill ID 465402 (AC)



Photo 13 – Floor sample 2 (F2) location.
PID reading: 314 ppm

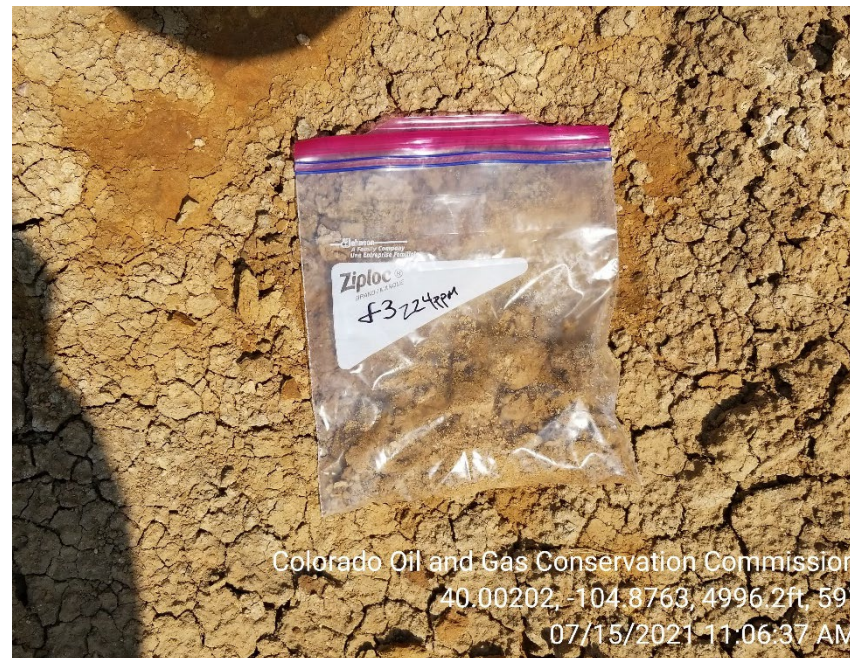


Photo 14 – Floor sample 3(F3) location.
PID reading: 224 ppm

Inspection Photos
John Weigandt Consolidation
Spill ID 465402 (AC)



Photo 15 – Floor sample 4 (F4) location.

PID reading: 527 ppm



Photo 16 – Sidewall sample 3 (SW3) location.

PID reading: 104 ppm

Inspection Photos John Weigandt Consolidation Spill ID 465402 (AC)

Analyte	Table 915-1	
	Residential Soil Screening Level Concentrations (mg/kg)	Protection of Groundwater Soil Screening Level Concentrations (mg/kg)
TPH	500	500
Benzene	1.2	0.0026
Toluene	490	0.69
Ethylbenzene	5.8	0.78
Xylenes	5.8	9.9
Napthalene	2	0.0038

Analyte	F1	F9
	COGCC Sample Points	
	Results (mg/kg)	Results (mg/kg)
TPH	38,699	27,816
Benzene	0.0495	0.133
Toluene	0.971	4.71
Ethylbenzene	0.927	4.75
Xylenes	25.5	38.3
Napthalene	7.75	10.8

Analyte	7	8
	Closest Operator Sample Points	
	Results (mg/kg)	Results (mg/kg)
TPH	<100	<100
Benzene	<0.002	<0.002
Toluene	<0.0050	<0.0050
Ethylbenzene	<0.0050	<0.0050
Xylenes	<.001	<.001
Napthalene	<0.038	<0.038

Table 1 – Analytical Results of COGCC Sampling Points F1 and F9 compared to KPK Sampling Points 7 and 8 (as provided in Form 27 Doc #402727469)

Inspection Photos John Weigandt Consolidation Spill ID 465402 (AC)

Type	Sample Pt	PID
Floor	F1	593
Floor	F2	314
Floor	F3	224
Floor	F4	527
Floor	F5	9.1
Floor	F6	6.4
Floor	F7	28
Floor	F8	96
Floor	F9	944
Floor	F10	18
Floor	F11	39
Floor	F12	39
Floor	F13	65.7
Wall	SW1	20.9
Wall	SW2	7.2
Wall	SW3	104
Wall	SW4	48
Wall	SW5	0.3
Wall	SW6	18

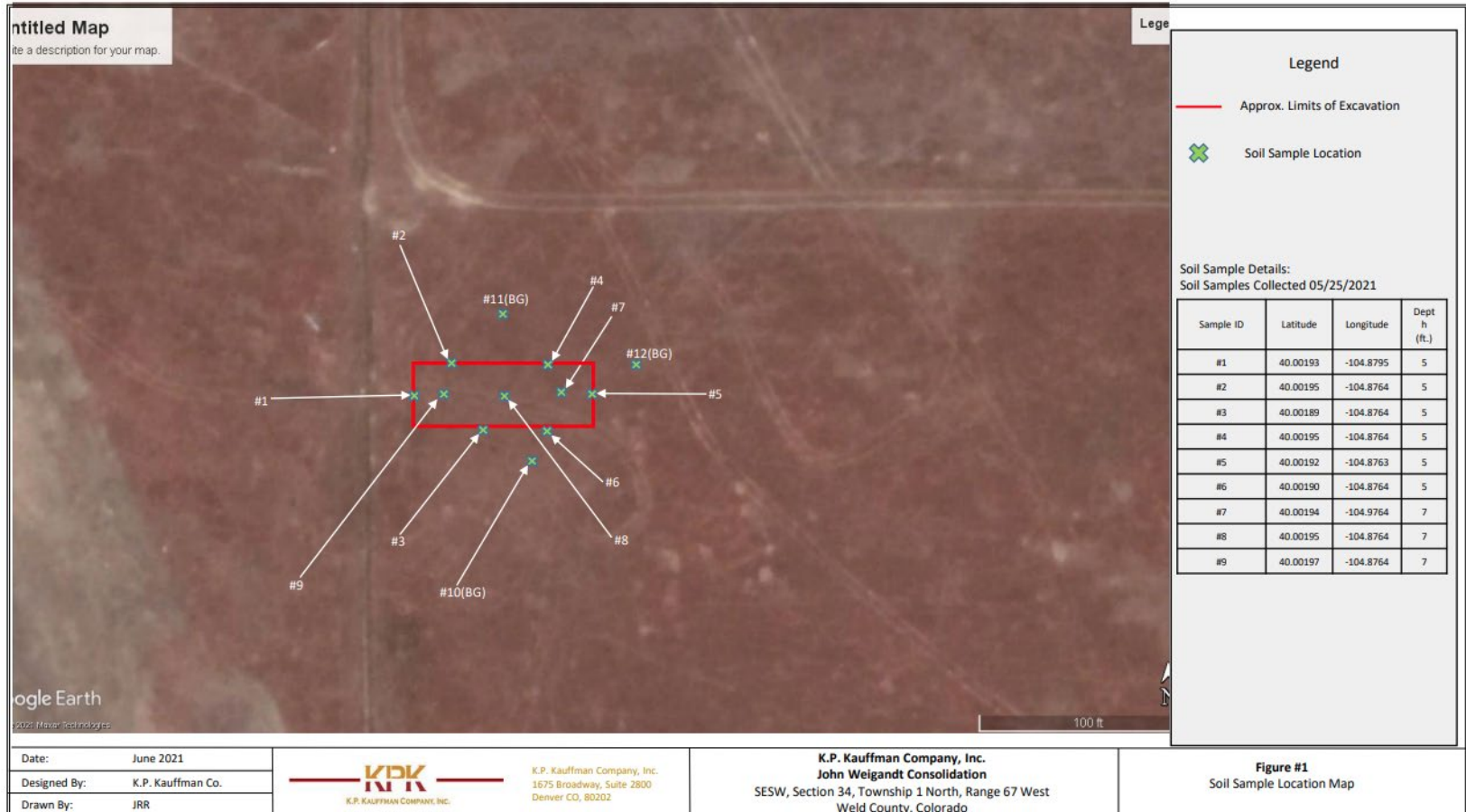


COGCC sample collection points (lat/long based off cellphone GPS)

Inspection Photos

John Weigandt Consolidation

Spill ID 465402 (AC)



KPK sample collection points (as provided in Form 27 Doc #402727469)