

Location Name: GINNIE 24-10, API #: 071-06849, Insp. #:695104605





37.26871, -104.66286

$\Delta$   $\frac{\text{ft}}{\pm 11\text{ft}}$

7278

$\triangle$   $\frac{^\circ\text{T}}{\pm 14}$

NE46

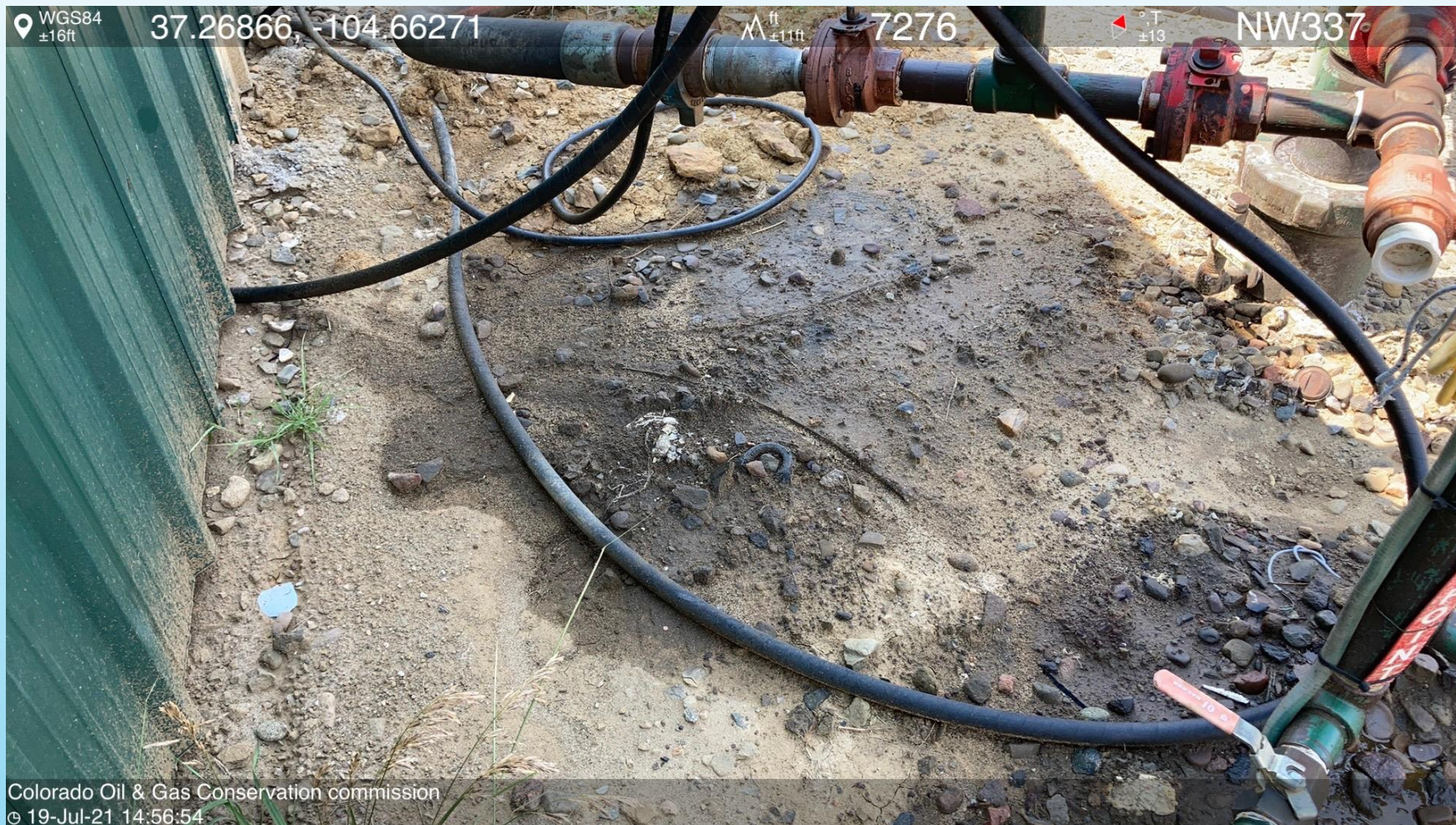


& Gas Conservation commission  
4:55:32









**PHOTO 4: ANOTHER IMAGE OF IMPACTED SOIL AROUND WELLHEAD.**



