

SCALE: 1" = 1000'

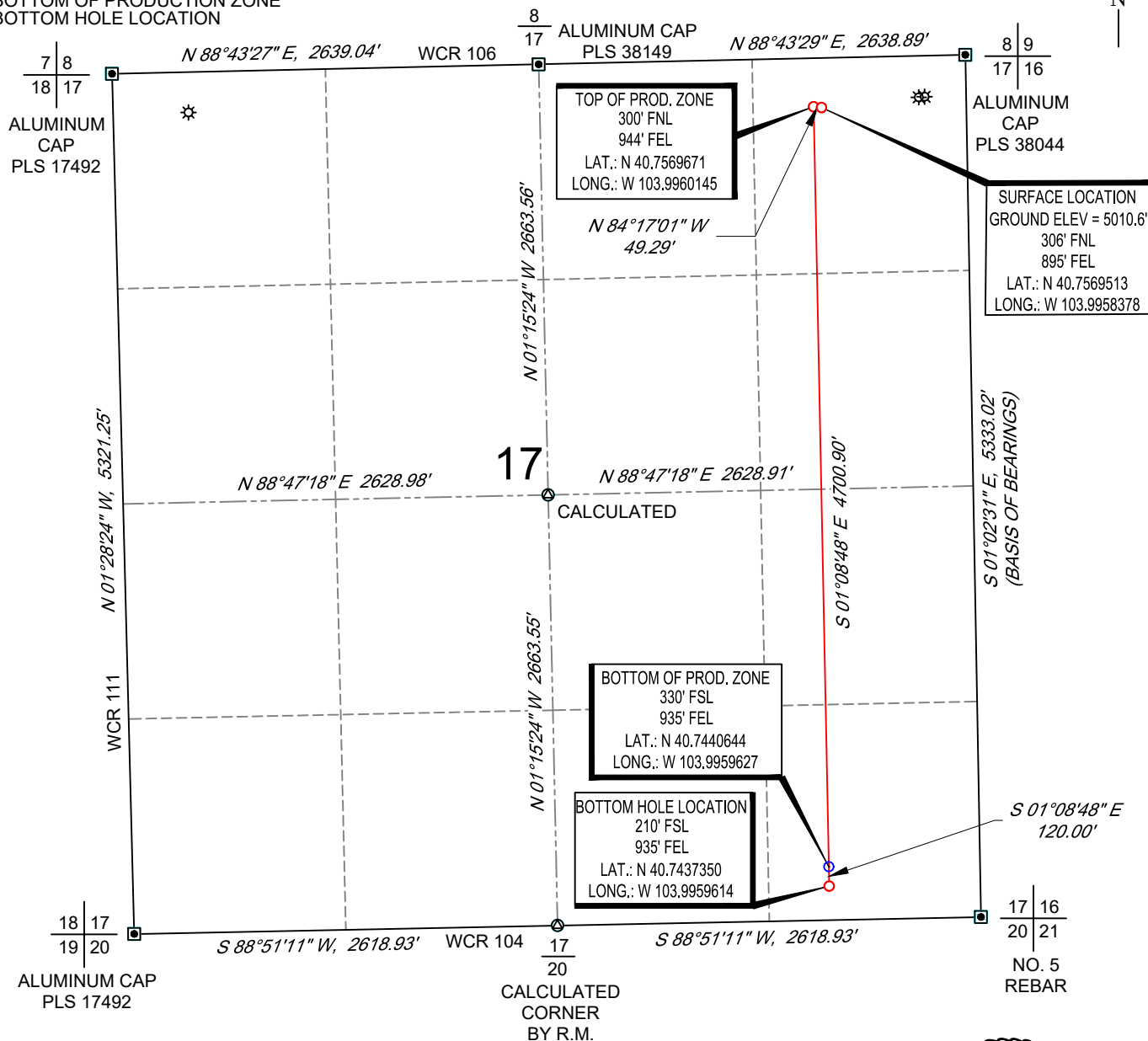
0' 500' 1000'

## LEGEND

✱ EXISTING WELLHEAD  
 SHL SURFACE HOLE LOCATION  
 TPZ TOP OF PRODUCTION ZONE  
 BPZ BOTTOM OF PRODUCTION ZONE  
 BHL BOTTOM HOLE LOCATION

## WELL LOCATION MAP

SHL NE/4 NE/4, SECTION 17, TOWNSHIP 9-N, RANGE 59-W  
 TPZ NE/4 NE/4, SECTION 17, TOWNSHIP 9-N, RANGE 59-W  
 BPZ/BHL SE/4 SE/4, SECTION 17, TOWNSHIP 9-N, RANGE 59-W  
 WELD COUNTY, COLORADO



## NOTES

1. Horizontal (NAD 83) and vertical (NAVD 88) datum is based on the Trimble VRS Network. The lineal units of measurement are U.S. Survey Foot.
2. All directions, distances, and dimensions shown hereon are based on coordinates from the "Colorado coordinate system of 1983 north zone" (Title 38, Article 52 C.R.S.).
3. All section line dimensions shown hereon are based on field measurements of existing monuments and/or physical evidence found in the field unless otherwise indicated.
4. Physical features shown hereon are for graphical representation only.
5. See Form 2A for visible improvements within 500' of wellhead.
6. Distances to nearest section lines are measured perpendicularly.
7. This is not a land survey nor land survey plat.

PDOP Reading: 1.5 Instrument Operator: **Brent Garcia**

Date Surveyed: **03/20/2018**



## SURVEYOR'S STATEMENT

The undersigned hereby states that the well location shown hereon was staked on the ground based on existing monumentation and/or physical evidence found in the field and is correct to the best of my knowledge, information and belief.



VERDAD RESOURCES  
**TIMBRO 1717-13H**  
**JOB NO: 116051**

JLS	03/30/2018	REVISION:	
SHEET :	1 OF 1	PAV	04/28/2021
FILE:LO_TIMBRO_1717_13H_REV3	JLS		02/24/2020