



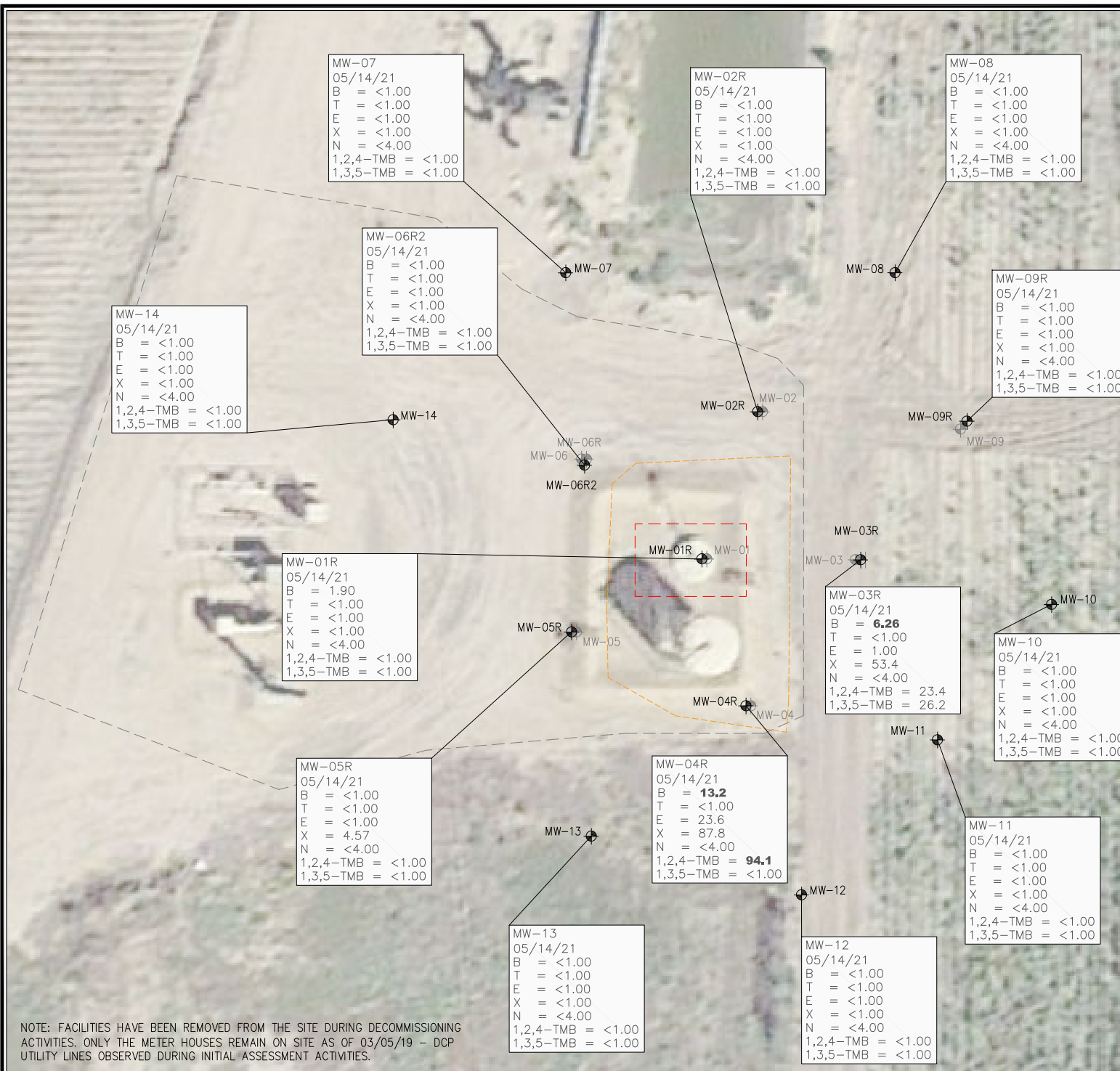
FIGURES

Figure 1: Groundwater Analytical Map (05/14/21)

Figure 2: Inorganic Groundwater Parameters Map (05/14/21)

Figure 3: Groundwater Elevation Map (05/14/21)

Figure 4: Remedial Well Location Map



LEGEND

- APPROXIMATE TANK BATTERY BOUNDARY
- - - INITIAL ASSESSMENT BOUNDARIES
- - - APPROXIMATE SOURCE EXCAVATION BOUNDARIES
- APPROXIMATE MONITORING WELL LOCATIONS
- DESTROYED (DES) MONITORING WELL LOCATIONS

PARAMETERS

GROUNDWATER SAMPLE LOCATION

DATE

B = BENZENE (µg/L)
T = TOLUENE (µg/L)
E = ETHYLBENZENE (µg/L)
X = TOTAL XYLENES (µg/L)
N = NAPHTHALENE (µg/L)
1,2,4-TMB = 1,2,4-TRIMETHYLBENZENE (µg/L)
1,3,5-TMB = 1,3,5-TRIMETHYLBENZENE (µg/L)

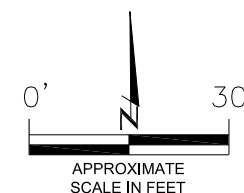
µg/L = MILLIGRAMS PER LITER

NOTES:

VALUES PRESENTED WITH A LESS THAN SYMBOL (<) DID NOT CONTAIN CONCENTRATIONS AT OR ABOVE THE LABORATORY REPORTING LIMIT

VALUES PRESENTED IN **BOLD** EXCEED THE COGCC TABLE 915-1 REGULATORY LIMITS FOR THAT COMPOUND

COGCC = COLORADO OIL AND GAS CONSERVATION COMMISSION



GROUNDWATER ANALYTICAL MAP

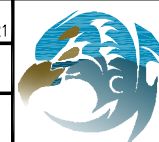
(05/14/21)

AGRICULTURAL PRODUCTS FEDERAL #32-17
HISTORICAL RELEASE
40.2695761 / -104.797120
SW1/4 NE1/4 SEC.32 T4N R66W 6PM
WELD COUNTY, COLORADO
REMEDIATION # 12471

DATE:
07/07/21

DRAWN BY:
AMN

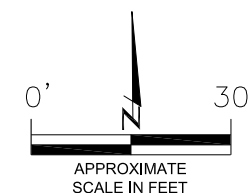
FIG.
NO. 1



EAGLE
ENVIRONMENTAL
CONSULTING, INC.
8000 W 44th Ave, Wheat Ridge, CO 80033
Ph: 303-433-0479 • F: 303-325-5449



NOTE: FACILITIES HAVE BEEN REMOVED FROM THE SITE DURING DECOMMISSIONING ACTIVITIES. ONLY THE METER HOUSES REMAIN ON SITE AS OF 03/05/19 - DCP UTILITY LINES OBSERVED DURING INITIAL ASSESSMENT ACTIVITIES.

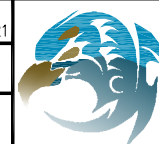


INORGANIC GROUNDWATER PARAMETERS MAP
 (05/14/21)
 AGRICULTURAL PRODUCTS FEDERAL #32-17
 HISTORICAL RELEASE
 40.2695761 / -104.797120
 SW1/4 NE1/4 SEC.32 T4N R66W 6PM
 WELD COUNTY, COLORADO
 REMEDIATION # 12471

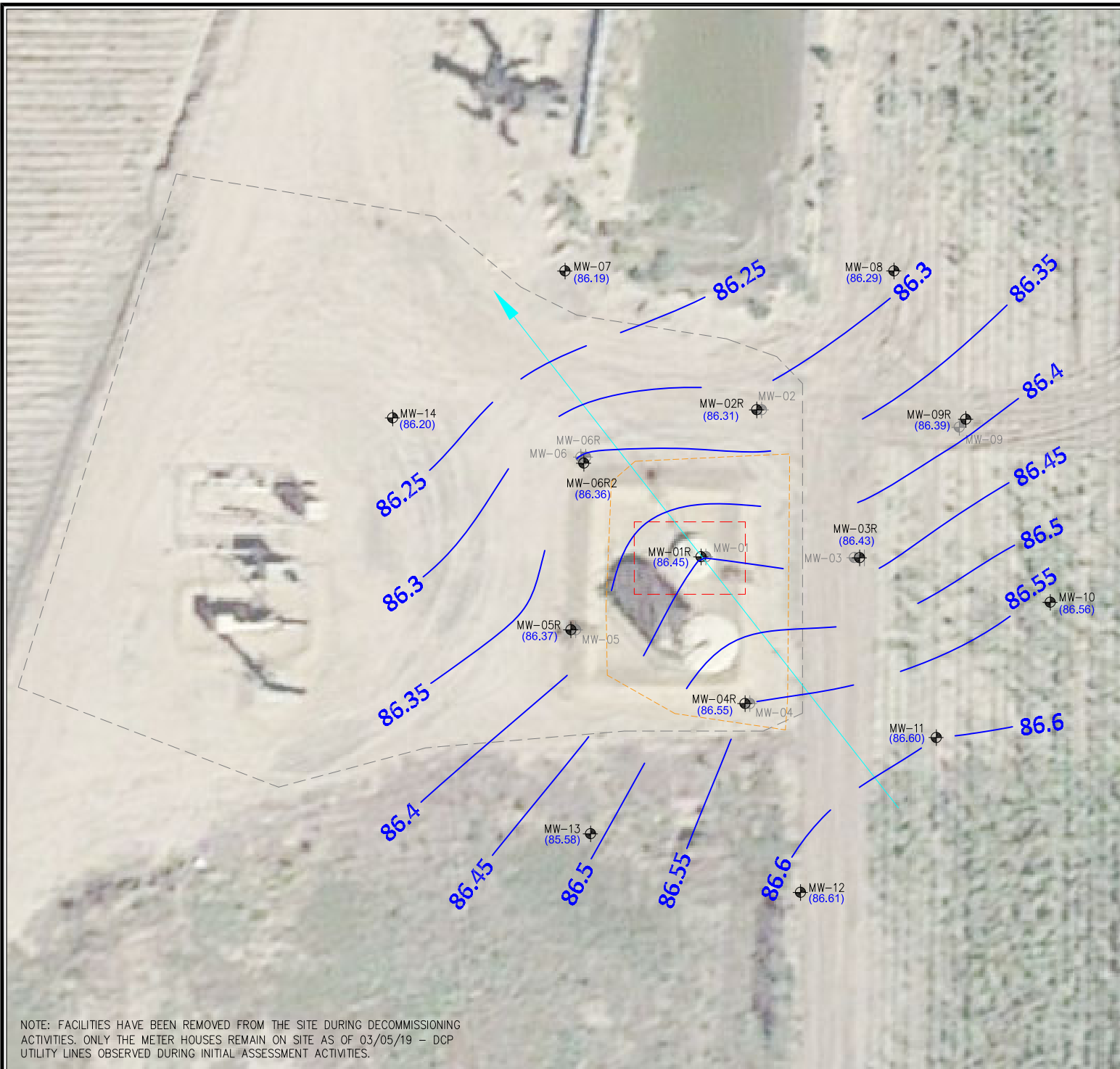
DATE:
07/07/21

DRAWN BY:
AMN

FIG.
NO. 2



EAGLE
 ENVIRONMENTAL
 CONSULTING, INC.
 8000 W 44th Ave, Wheat Ridge, CO 80033
 Ph: 303-433-0479 • F: 303-325-5449



NOTE: FACILITIES HAVE BEEN REMOVED FROM THE SITE DURING DECOMMISSIONING ACTIVITIES. ONLY THE METER HOUSES REMAIN ON SITE AS OF 03/05/19 – DCP UTILITY LINES OBSERVED DURING INITIAL ASSESSMENT ACTIVITIES.

LEGEND

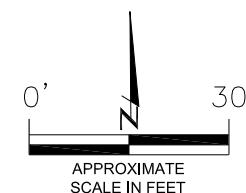
- APPROXIMATE TANK BATTERY BOUNDARY
- INITIAL ASSESSMENT BOUNDARIES
- APPROXIMATE SOURCE EXCAVATION BOUNDARIES
- ⊕ APPROXIMATE MONITORING WELL LOCATIONS
- ⊕ DESTROYED (DES) MONITORING WELL LOCATIONS
- (87.31) RELATIVE GROUNDWATER ELEVATION (FT.)
- INFERRED GROUNDWATER ELEVATION CONTOUR (FT.)
- APPROXIMATE GROUNDWATER FLOW DIRECTION

FT. = FEET

NOTE:

GROUNDWATER ELEVATION DATA WAS COLLECTED FROM ALL MONITORING WELLS ON 05/14/21.

GROUNDWATER ELEVATION DATA COLLECTED FROM MONITORING WELL MW-13 WAS NOT USED IN THE CONSTRUCTION OF INFERRED GROUNDWATER ELEVATION CONTOURS.



GROUNDWATER ELEVATION MAP

(05/14/21)

AGRICULTURAL PRODUCTS FEDERAL #32-17
HISTORICAL RELEASE
40.269576 / -104.797120
SW1/4 NE1/4 SEC.32 T4N R66W 6PM
WELD COUNTY, COLORADO
REMEDATION # 12471

DATE:
07/07/21

DRAWN BY:
AMN

FIG.
NO. 3



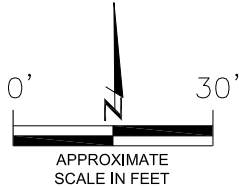
EAGLE
ENVIRONMENTAL
CONSULTING, INC.
8000 W 44th Ave, Wheat Ridge, CO 80033
Ph: 303-433-0479 • F: 303-325-5449



NOTE: FACILITIES HAVE BEEN REMOVED FROM THE SITE DURING DECOMMISSIONING ACTIVITIES. ONLY THE METER HOUSES REMAIN ON SITE AS OF 03/05/19 – DCP UTILITY LINES OBSERVED DURING INITIAL ASSESSMENT ACTIVITIES.

LEGEND

- APPROXIMATE TANK BATTERY BOUNDARY
- INITIAL EXCAVATION BOUNDARIES
- ⊕ APPROXIMATE MONITORING WELL LOCATIONS
- ⊕ DESTROYED (DES) MONITORING WELL LOCATIONS
- ▲ APPROXIMATE AIR SPARGE WELL LOCATIONS
- ⊕ APPROXIMATE SOIL VAPOR EXTRACTION WELL LOCATIONS



REMEDIAL WELL LOCATION MAP
AGRICULTURAL PRODUCTS FEDERAL #32-17
HISTORICAL RELEASE
40.2695761 / -104.797120
SW1/4 NE1/4 SEC.32 T4N R66W 6PM
WELD COUNTY, COLORADO
REMEDATION # 12471

DATE:
06/29/21
DRAWN BY:
AMN
FIG.
NO. 4



EAGLE
ENVIRONMENTAL
CONSULTING, INC.
8000 W 44th Ave, Wheat Ridge, CO 80033
Ph: 303-433-0479 • F: 303-325-5449



TABLES

Table 1: Groundwater Analytical Results Summary

Table 2: Inorganic Groundwater Parameters Summary

Table 3: Groundwater Elevation Summary

Table 4: Air Sparge / Soil Vapor Extraction Mobile Event Summary

TABLE 1
GROUNDWATER ANALYTICAL RESULTS SUMMARY
AGRICULTURAL PRODUCTS FEDERAL #32-17
HISTORICAL RELEASE
40.269576 / -104.797120
SW¼ NE¼ SEC.32 T4N R66W 6PM
WELD COUNTY, COLORADO
REMEDATION # 12471

Sample Location (Latitude/Longitude)	Date	Benzene (µg/L)	Toluene (µg/L)	Ethylbenzene (µg/L)	Total Xylenes (µg/L)	Naphthalene (µg/L)	1,2,4-TMB (µg/L)	1,3,5-TMB (µg/L)
COGCC Table 915-1 Regulatory Limits (µg/L)		5	560	700	1,400	140	67	67
GW-01 (40.269576 / -104.797125)	02/21/19	8250	<4.00	898	8890	NA	NA	NA
MW-01 (40.269582 / -104.797111)	04/09/19	255	<1.00	99.3	1390	NA	NA	NA
	06/24/19	DES						
MW-01R (40.269582 / -104.797111)	11/13/19	1340	<4.00	564	319	NA	NA	NA
	02/12/20	504	<50.0	114	2650	NA	NA	NA
	05/06/20	132	<1.00	44.8	572	NA	NA	NA
	11/25/20	740	<1.00	278	5920	NA	NA	NA
	02/16/21	44.1	<4.00	24.3	251	<16.0	67.8	48.4
	05/14/21	1.90	<1.00	<1.00	<1.00	<4.00	<1.00	<1.00
MW-02 (40.269667 / -104.797065)	04/09/19	475	<1.00	116	482	NA	NA	NA
	06/24/19	DES						
MW-02R (40.269667 / -104.797065)	11/13/19	46.8	<4.00	4.60	24.8	NA	NA	NA
	02/12/20	19.6	<4.00	<4.00	<4.00	NA	NA	NA
	05/06/20	1.59	<1.00	<1.00	<1.00	NA	NA	NA
	11/25/20	<1.00	<1.00	<1.00	<1.00	NA	NA	NA
	02/16/21	<4.00	<4.00	<4.00	<4.00	<16.0	<4.00	<4.00
	05/14/21	<1.00	<1.00	<1.00	<1.00	<4.00	<1.00	<1.00
MW-03 (40.269580 / -104.796995)	04/09/19	438	<1.00	175	2740	NA	NA	NA
	06/24/19	DES						
MW-03R (40.269580 / -104.796995)	11/13/19	19.0	<4.00	<4.00	627	NA	NA	NA
	02/12/20	254	<4.00	197	1080	NA	NA	NA
	05/06/20	73.8	<1.00	21.8	267	NA	NA	NA
	11/25/20	581	<4.00	38.0	524	NA	NA	NA
	02/16/21	151	<4.00	15.6	599	<16.0	201	125
	05/14/21	6.26	<1.00	1.00	53.4	<4.00	23.4	26.2
MW-04 (40.269496 / -104.797073)	04/09/19	1990	<1.00	480	2720	NA	NA	NA
	06/24/19	DES						
MW-04R (40.269496 / -104.797073)	11/13/19	22.2	<4.00	<4.00	961	NA	NA	NA
	02/12/20	31.6	<4.00	286	1210	NA	NA	NA
	05/06/20	34.0	<1.00	246	1340	NA	NA	NA
	11/25/20	24.0	<4.00	49.4	308	NA	NA	NA
	02/16/21	23.7	<4.00	46.8	283	<16.0	148	12.0
	05/14/21	13.2	<1.00	23.6	87.8	<4.00	94.1	<1.00
MW-05 (40.269534 / -104.797222)	04/09/19	<4.00	<4.00	76.6	583	NA	NA	NA
	06/24/19	DES						
MW-05R (40.269534 / -104.797222)	11/13/19	<4.00	<4.00	<4.00	381	NA	NA	NA
	02/12/20	<4.00	<4.00	<4.00	14.5	NA	NA	NA
	05/06/20	<1.00	<1.00	17.8	114	NA	NA	NA
	11/25/20	<1.00	<1.00	10.1	4.62	NA	NA	NA
	02/16/21	<4.00	<4.00	11.0	<4.00	<16.0	<4.00	<4.00
	05/14/21	<1.00	<1.00	<1.00	4.57	<4.00	<1.00	<1.00
MW-06 (40.269640 / -104.797210)	04/09/19	<1.00	<1.00	69.9	1650	NA	NA	NA
	06/24/19	DES						
MW-06R (40.269640 / -104.797210)	11/13/19	DES						

TABLE 1
GROUNDWATER ANALYTICAL RESULTS SUMMARY
AGRICULTURAL PRODUCTS FEDERAL #32-17
HISTORICAL RELEASE
40.269576 / -104.797120
SW¼ NE¼ SEC.32 T4N R66W 6PM
WELD COUNTY, COLORADO
REMEDIATION # 12471

Sample Location (Latitude/Longitude)	Date	Benzene (µg/L)	Toluene (µg/L)	Ethylbenzene (µg/L)	Total Xylenes (µg/L)	Naphthalene (µg/L)	1,2,4-TMB (µg/L)	1,3,5-TMB (µg/L)
COGCC Table 915-1 Regulatory Limits (µg/L)		5	560	700	1,400	140	67	67
MW-06R2 (40.269640 / -104.797210)	02/12/20	2.05	<1.00	116	1950	NA	NA	NA
	05/06/20	<1.00	<1.00	<1.00	<1.00	NA	NA	NA
	11/25/20	<1.00	<1.00	<1.00	<1.00	NA	NA	NA
	02/16/21	<4.00	<4.00	<4.00	<4.00	<16.0	<4.00	<4.00
	05/14/21	<1.00	<1.00	<1.00	<1.00	<4.00	<1.00	<1.00
MW-07 (40.267725 / -104.797232)	02/12/20	<1.00	<1.00	<1.00	<1.00	NA	NA	NA
	05/06/20	<1.00	<1.00	<1.00	<1.00	NA	NA	NA
	11/25/20	<1.00	<1.00	<1.00	<1.00	NA	NA	NA
	02/16/21	<1.00	<1.00	<1.00	<1.00	<4.00	<1.00	<1.00
	05/14/21	<1.00	<1.00	<1.00	<1.00	<4.01	<1.00	<1.00
MW-08 (40.269726 / -104.796981)	02/12/20	<1.00	<1.00	<1.00	<1.00	NA	NA	NA
	05/06/20	<1.00	<1.00	<1.00	<1.00	NA	NA	NA
	11/25/20	<1.00	<1.00	<1.00	<1.00	NA	NA	NA
	02/16/21	<1.00	<1.00	<1.00	<1.00	<4.00	<1.00	<1.00
	05/14/21	<1.00	<1.00	<1.00	<1.00	<4.00	<1.00	<1.00
MW-09 (40.269643 / -104.796927)	02/12/20	<1.00	<1.00	16.4	119	NA	NA	NA
	05/06/20	<1.00	<1.00	2.84	32.5	NA	NA	NA
MW-09R (40.269643 / -104.796927)	DES							
	11/25/20	<1.00	<1.00	<1.00	<1.00	NA	NA	NA
	02/16/21	<1.00	<1.00	<1.00	<1.00	<4.00	<1.00	<1.00
	05/14/21	<1.00	<1.00	<1.00	<1.00	<4.00	<1.00	<1.00
MW-10 (40.269535 / -104.796859)	02/12/20	<1.00	<1.00	<1.00	3.53	NA	NA	NA
	05/06/20	<1.00	<1.00	<1.00	3.53	NA	NA	NA
	11/25/20	<1.00	<1.00	<1.00	<1.00	NA	NA	NA
	02/16/21	<1.00	<1.00	<1.00	<1.00	<4.00	<1.00	13.1
	05/14/21	<1.00	<1.00	<1.00	<1.00	<4.00	<1.00	<1.00
MW-11 (40.269466 / -104.796932)	02/12/20	<1.00	<1.00	<1.00	<1.00	NA	NA	NA
	05/06/20	<1.00	<1.00	<1.00	<1.00	NA	NA	NA
	11/25/20	<1.00	<1.00	<1.00	<1.00	NA	NA	NA
	02/16/21	<1.00	<1.00	<1.00	<1.00	<4.00	<1.00	<1.00
	05/14/21	<1.00	<1.00	<1.00	<1.00	<4.00	<1.00	<1.00
MW-12 (40.269383 / -104.797047)	02/12/20	<1.00	<1.00	<1.00	<1.00	NA	NA	NA
	05/06/20	<1.00	<1.00	<1.00	<1.00	NA	NA	NA
	11/25/20	<1.00	<1.00	<1.00	<1.00	NA	NA	NA
	02/16/21	<1.00	<1.00	<1.00	<1.00	<4.00	<1.00	<1.00
	05/14/21	<1.00	<1.00	<1.00	<1.00	<4.00	<1.00	<1.00
MW-13 (40.269415 / -104.797204)	02/12/20	<1.00	<1.00	<1.00	<1.00	NA	NA	NA
	05/06/20	<1.00	<1.00	<1.00	<1.00	NA	NA	NA
	11/25/20	<1.00	<1.00	<1.00	<1.00	NA	NA	NA
	02/16/21	<1.00	<1.00	<1.00	<1.00	<4.00	<1.00	<1.00
	05/14/21	<1.00	<1.00	<1.00	<1.00	<4.00	<1.00	<1.00

TABLE 1
GROUNDWATER ANALYTICAL RESULTS SUMMARY
AGRICULTURAL PRODUCTS FEDERAL #32-17
HISTORICAL RELEASE
40.269576 / -104.797120
SW¼ NE¼ SEC.32 T4N R66W 6PM
WELD COUNTY, COLORADO
REMEDIATION # 12471

Sample Location (Latitude/Longitude)	Date	Benzene (µg/L)	Toluene (µg/L)	Ethylbenzene (µg/L)	Total Xylenes (µg/L)	Naphthalene (µg/L)	1,2,4-TMB (µg/L)	1,3,5-TMB (µg/L)
COGCC Table 915-1 Regulatory Limits (µg/L)		5	560	700	1,400	140	67	67
MW-14 (40.269640 / -104.797361)	03/04/20	<1.00	<1.00	6.99	13.6	NA	NA	NA
	05/06/20	<1.00	<1.00	<1.00	<1.00	NA	NA	NA
	11/25/20	<1.00	<1.00	<1.00	<1.00	NA	NA	NA
	02/16/21	<1.00	<1.00	<1.00	<1.00	<4.00	<1.00	<1.00
	05/14/21	<1.00	<1.00	<1.00	<1.00	<4.00	<1.00	<1.00
COGCC = Colorado Oil and Gas Conservation Commission µg/L - micrograms per liter DES - Destroyed INA - Inaccessible NA - Not Analyzed 1,2,4-TMB = 1,2,4 - Trimethylbenzene 1,3,5-TMB = 1,3,5 - Trimethylbenzene Note: Values presented with a less than symbol (<) indicate concentrations were not observed at or above the laboratory reporting limit. Values presented in bold typeface exceed their respective COGCC - Regulatory Limits (Table 915-1).								

TABLE 2
INORGANIC GROUNDWATER PARAMETERS SUMMARY
AGRICULTURAL PRODUCTS FEDERAL #32-17
HISTORICAL RELEASE
40.269576 / -104.797120
SW¼ NE¼ SEC.32 T4N R66W 6PM
WELD COUNTY, COLORADO
REMEDATION # 12471

Sample Location (Latitude/Longitude)	Date	Chloride (mg/L)	Sulfate (mg/L)	Total Dissolved Solids (mg/L)
<i>COGCC Table 91-1 Regulatory Limits (mg/L)</i>		<1.25xLocal Background (190 to 220)	<1.25xLocal Background (300 to 645)	<1.25xLocal Background (1206.3 to 2275)
MW-01R (40.269582 / -104.797111)	02/16/21	82.3	71.9	3880
	05/14/21	72.4	421	872
MW-02R (40.269667 / -104.797065)	02/16/21	116	158	874
	05/14/21	NOP		
MW-03R (40.269580 / -104.796995)	02/16/21	133	244	1210
	05/14/21	60.3	1060	1160
MW-04R (40.269496 / -104.797073)	02/16/21	57.0	7.79	690
	05/14/21	NOP		
MW-05R (40.269534 / -104.797222)	02/16/21	160	137	1160
	05/14/21	NOP		
MW-06R2 (40.269640 / -104.797210)	02/16/21	155	300	1400
	05/14/21	104	553	1220
MW-07 (40.267725 / -104.797232)	02/16/21	121	190	955
	05/14/21	NOP		
MW-08 (40.269726 / -104.796981)	02/16/21	154	226	975
	05/14/21	NOP		
MW-09R (40.269643 / -104.796927)	02/16/21	148	167	910
	05/14/21	NOP		
MW-10 (40.269535 / -104.796859)	02/16/21	176	240	965
	05/14/21	NOP		

TABLE 2
INORGANIC GROUNDWATER PARAMETERS SUMMARY
AGRICULTURAL PRODUCTS FEDERAL #32-17
HISTORICAL RELEASE
40.269576 / -104.797120
SW¼ NE¼ SEC.32 T4N R66W 6PM
WELD COUNTY, COLORADO
REMEDATION # 12471

Sample Location (Latitude/Longitude)	Date	Chloride (mg/L)	Sulfate (mg/L)	Total Dissolved Solids (mg/L)
COGCC Table 91-1 Regulatory Limits (mg/L)		<1.25xLocal Background (190 to 220)	<1.25xLocal Background (300 to 645)	<1.25xLocal Background (1206.3 to 2275)
MW-11 (40.269466 / -104.796932)	02/16/21	138	183	995
	05/14/21	NOP		
MW-12 (40.269383 / -104.797047)	02/16/21	139	210	944
	05/14/21	NOP		
MW-13 (40.269415 / -104.797204)	02/16/21	152	516	1820
	05/14/21	66.1	1360	1540
MW-14 (40.269640 / -104.797361)	02/16/21	133	191	1250
	05/14/21	NOP		
COGCC - Colorado Oil and Gas Conservation Commission mg/L - milligrams per liter NOP - Not On Sampling Plan determination of "local background" levels at the site. Local "regulatory limit" (1.25*local background) presented (in parentheses). Values presented in bold typeface exceed their respective COGCC - Regulatory Limits (Table 915-1).				

TABLE 3
GROUNDWATER ELEVATION SUMMARY
AGRICULTURAL PRODUCTS FEDERAL #32-17
HISTORICAL RELEASE
40.269576 / -104.797120
SW¼ NE¼ SEC.32 T4N R66W 6PM
WELD COUNTY, COLORADO
REMEDIATION # 12471

Sample Location (Latitude/Longitude)	Date	Top of Casing Elevation (feet)	Depth to Groundwater from TOC (feet)	Relative Groundwater Elevation (feet) (TOC)	Depth to Groundwater (feet)(bgs)	Stick Up Height (feet)
MW-01 (40.269582 / -104.797111)	04/09/19	99.54	11.28	88.26	8.79	2.49
	06/24/19	DES				
MW-01R (40.269582 / -104.797111)	11/13/19	99.88	10.73	89.15	7.52	3.21
	02/12/20		12.45	87.43	9.24	
	05/06/20		11.86	88.02	8.65	
	11/25/20		11.60	88.28	8.39	
	02/16/21		13.59	86.29	10.38	
	05/14/21		13.43	86.45	10.22	
MW-02 (40.269667 / -104.797065)	04/09/19	99.72	11.60	88.12	8.90	2.70
	06/24/19	DES				
MW-02R (40.269667 / -104.797065)	11/13/19	99.71	10.64	89.07	7.39	3.25
	02/12/20		12.30	87.41	9.05	
	05/06/20		11.64	88.07	8.39	
	11/25/20		11.50	88.21	8.25	
	02/16/21		13.49	86.22	10.24	
	05/14/21		13.40	86.31	10.15	
MW-03 (40.269580 / -104.796995)	04/09/19	98.90	10.61	88.29	8.55	2.06
	06/24/19	DES				
MW-03R (40.269580 / -104.796995)	11/13/19	99.42	10.24	89.18	7.01	3.23
	02/12/20		11.89	87.53	8.66	
	05/06/20		11.20	88.22	7.97	
	11/25/20		11.10	88.32	7.87	
	02/16/21		13.07	86.35	9.84	
	05/14/21		12.99	86.43	9.76	
MW-04 (40.269496 / -104.797073)	04/09/19	100.00	11.53	88.47	8.90	2.63
	06/24/19	DES				
MW-04R (40.269496 / -104.797073)	11/13/19	99.58	10.29	89.29	7.18	3.11
	02/12/20		11.96	87.62	8.85	
	05/06/20		11.30	88.28	8.19	
	11/25/20		11.18	88.40	8.07	
	02/16/21		13.15	86.43	10.04	
	05/14/21		13.03	86.55	9.92	
MW-05 (40.269534 / -104.797222)	04/09/19	99.67	11.41	88.26	8.89	2.52
	06/24/19	DES				
MW-05R (40.269534 / -104.797222)	11/13/19	100.00	10.82	89.18	7.57	3.25
	02/12/20		12.52	87.48	9.27	
	05/06/20		11.90	88.10	8.65	
	11/25/20		11.73	88.27	8.48	
	02/16/21		13.70	86.30	10.45	
	05/14/21		13.63	86.37	10.38	

TABLE 3
GROUNDWATER ELEVATION SUMMARY
AGRICULTURAL PRODUCTS FEDERAL #32-17
HISTORICAL RELEASE
40.269576 / -104.797120
SW¼ NE¼ SEC.32 T4N R66W 6PM
WELD COUNTY, COLORADO
REMEDIAION # 12471

Sample Location (Latitude/Longitude)	Date	Top of Casing Elevation (feet)	Depth to Groundwater from TOC (feet)	Relative Groundwater Elevation (feet) (TOC)	Depth to Groundwater (feet)(bgs)	Stick Up Height (feet)
MW-06 (40.269640 / -104.797210)	04/09/19	99.57	11.44	88.13	8.95	2.49
	06/24/19	DES				
MW-06R (40.269640 / -104.797210)	11/13/19	99.95	DES			
MW-06R2 (40.269640 / -104.797210)	02/12/20	96.60	9.15	87.45	9.15	NA
	05/06/20		8.52	88.08	8.52	
	11/25/20		8.36	88.24	8.36	
	02/16/21		10.36	86.24	10.36	
	05/14/21		10.24	86.36	10.24	
MW-07 (40.267725 / -104.797232)	02/12/20	95.84	9.56	86.28	9.56	NA
	05/06/20		7.89	87.95	7.89	
	11/25/20		7.72	88.12	7.72	
	02/16/21		9.73	86.11	9.73	
	05/14/21		9.65	86.19	9.65	
MW-08 (40.269726 / -104.796981)	02/12/20	95.61	8.19	87.42	8.19	NA
	05/06/20		7.51	88.10	7.51	
	11/25/20		7.41	88.20	7.41	
	02/16/21		9.41	86.20	9.41	
	05/14/21		9.32	86.29	9.32	
MW-09 (40.269643 / -104.796927)	02/12/20	95.82	8.32	87.50	8.32	NA
	05/06/20		7.59	88.23	7.59	
		DES				
MW-09R (40.269643 / -104.796927)	11/25/20	95.90	7.62	88.28	7.62	NA
	02/16/21		9.60	86.30	9.60	
	05/14/21		9.51	86.39	9.51	
MW-10 (40.269535 / -104.796859)	02/12/20	95.64	7.98	87.66	7.98	NA
	05/06/20		7.24	88.40	7.24	
	11/25/20		7.23	88.41	7.23	
	02/16/21		9.19	86.45	9.19	
	05/14/21		9.08	86.56	9.08	
MW-11 (40.269466 / -104.796932)	02/12/20	95.54	7.81	87.73	7.81	NA
	05/06/20		7.12	88.42	7.12	
	11/25/20		7.03	88.51	7.03	
	02/16/21		9.01	86.53	9.01	
	05/14/21		8.94	86.60	8.94	
MW-12 (40.269383 / -104.797047)	02/12/20	96.09	8.32	87.77	8.32	NA
	05/06/20		7.65	88.44	7.65	
	11/25/20		7.57	88.52	7.57	
	02/16/21		9.54	86.55	9.54	
	05/14/21		9.48	86.61	9.48	

TABLE 3
GROUNDWATER ELEVATION SUMMARY
AGRICULTURAL PRODUCTS FEDERAL #32-17
HISTORICAL RELEASE
40.269576 / -104.797120
SW¼ NE¼ SEC.32 T4N R66W 6PM
WELD COUNTY, COLORADO
REMEDATION # 12471

Sample Location (Latitude/Longitude)	Date	Top of Casing Elevation (feet)	Depth to Groundwater from TOC (feet)	Relative Groundwater Elevation (feet) (TOC)	Depth to Groundwater (feet)(bgs)	Stick Up Height (feet)
MW-13 (40.269415 / -104.797204)	02/12/20	95.07	8.35	86.72	8.35	NA
	05/06/20		7.74	87.33	7.74	
	11/25/20		7.59	87.48	7.59	
	02/16/21		9.57	85.50	9.57	
	05/14/21		9.49	85.58	9.49	
MW-14 (40.269640 / -104.797361)	03/04/20	96.60	9.79	86.81	9.79	NA
	05/06/20		8.69	87.91	10.79	
	11/25/20		8.49	88.11	8.49	
	02/16/21		10.49	86.11	10.49	
	05/14/21		10.40	86.20	10.40	
COGCC = Colorado Oil and Gas Conservation Commission bgs- below ground surface NA - not applicable TOC - Top of Casing DES - Destroyed						

TABLE 4
AIR SPARGE/SOIL VAPOR EXTRACTION MOBILE EVENT SUMMARY
AGRICULTURAL PRODUCTS FEDERAL #32-17
HISTORICAL RELEASE
40.269576 / -104.797120
SW¼ NE¼ SEC.32 T4N R66W 6PM
WELD COUNTY, COLORADO
REMEDIATION # 12471

Date	Operation Time (Hours)
01/06/21	8
01/11/21	7.5
01/26/21	7.5
03/01/21	7.5
03/23/21	6
04/13/21	8
04/29/21	8
05/24/21	8.5
06/25/21	8
Notes: Mobile Air Sparge (AS) and Soil Vapor Extraction (SVE) events began at the site in January 2021. Site access limited (saturated conditions) 2Q21.	



ATTACHMENT A

Laboratory Analytical Reports



May 24, 2021

Eagle Environmental Consulting, Inc.

Martin C Eckert III

8000 W 44th Ave

Wheat Ridge CO 80033

**Project Name - Noble - Agricultural Products
Federal #32-17**

Project Number - [none]

Attached are your analytical results for Noble - Agricultural Products Federal #32-17 received by Origins Laboratory, Inc. May 14, 2021. This project is associated with Origins project number Y105275-01.

The analytical results in the following report were analyzed under the guidelines of EPA Methods. These methods are identified as follows; "SW" are defined in SW-846, "EPA" are defined in 40CFR part 136 and "SM" are defined in the most current revision of Standard Methods For the Examination of Water and Wastewater.

The analytical results apply specifically to the samples and analyses specified per the attached Chain of Custody. As such, this report shall not be reproduced except in full, without the written approval of Origin's laboratory.

Unless otherwise noted, the analytical results for all soil samples are reported on a wet weight basis. All analytical analyses were performed under NELAP guidelines unless noted by a data qualifier.

Any holding time exceedances, deviations from the method specifications or deviations from Origins Laboratory's Standard Operating Procedures are outlined in the case narrative.

Thank you for selecting Origins for your analytical needs. Please contact us with any questions concerning this report, or if we can help with anything at all.

Origins Laboratory, Inc.
303.433.1322
o-squad@oelabinc.com



1725 Elk Place, Denver, CO 80211 | Phone: 303.433.1322 | Fax: 303.265.9645

Eagle Environmental Consulting, Inc.

8000 W 44th Ave

Wheat Ridge CO 80033

Martin C Eckert III

Project Number: [none]

Project: Noble - Agricultural Products Federal
#32-17

CROSS REFERENCE REPORT

Sample ID	Laboratory ID	Matrix	Date Sampled	Date Received
MW-01R	Y105275-01	Water	May 14, 2021 10:12	05/14/2021 11:59
MW-03R	Y105275-02	Water	May 14, 2021 10:34	05/14/2021 11:59
MW-06R2	Y105275-03	Water	May 14, 2021 9:51	05/14/2021 11:59
MW-13	Y105275-04	Water	May 14, 2021 11:26	05/14/2021 11:59

Origins Laboratory, Inc.



The results in this report apply to the samples analyzed in accordance with the chain of custody document. This analytical report must be reproduced in its entirety.

Eagle Environmental Consulting, Inc.

8000 W 44th Ave

Wheat Ridge CO 80033

Martin C Eckert III

Project Number: [none]

Project: Noble - Agricultural Products Federal #32-17

Origins Laboratory

Sample Receipt Checklist

F-012207-01-R1
Effective Date: 01/09/12

Origins Work Order: Y105275

Client: Eagle

Client Project ID: Ag Product Federal

Checklist Completed by: JG

Shipped Via: HD

(UPS, FedEx, Hand Delivered, Pick-up, etc.)

Date/time completed: 5/14/21

Airbill #: N/A

Matrix(s) Received: (Check all that apply): Soil/Solid ☒ Water ☐ Other: _____

Cooler Number/Temperature: 1 5.3 °C 1 °C 1 °C (Describe) _____ °C

Thermometer ID: T003

Requirement Description	Yes	No	N/A	Comments (if any)
If samples require cooling, was the temperature between 0°C to ≤ 6°C ⁽¹⁾ ?	<input checked="" type="checkbox"/>	<input type="checkbox"/>	<input type="checkbox"/>	
Is there ice present (document if blue ice is used)	<input checked="" type="checkbox"/>	<input type="checkbox"/>	<input type="checkbox"/>	
Are custody seals present on cooler? (if so, document in comments if they are signed and dated, broken or intact)	<input checked="" type="checkbox"/>	<input checked="" type="checkbox"/>	<input type="checkbox"/>	
Are custody seals present on each sample container? (if so, document in comments if they are signed and dated, broken or intact)	<input checked="" type="checkbox"/>	<input checked="" type="checkbox"/>	<input type="checkbox"/>	
Were all samples received intact ⁽¹⁾ ?	<input checked="" type="checkbox"/>	<input type="checkbox"/>	<input type="checkbox"/>	
Was adequate sample volume provided ⁽¹⁾ ?	<input checked="" type="checkbox"/>	<input type="checkbox"/>	<input type="checkbox"/>	
Are short holding time analytes or samples with HTs due within 48 hours present ⁽¹⁾ ?	<input checked="" type="checkbox"/>	<input checked="" type="checkbox"/>	<input type="checkbox"/>	
Is a chain-of-custody (COC) present and filled out completely ⁽¹⁾ ?	<input checked="" type="checkbox"/>	<input type="checkbox"/>	<input type="checkbox"/>	
Does the COC agree with the number and type of sample bottles received ⁽¹⁾ ?	<input checked="" type="checkbox"/>	<input type="checkbox"/>	<input type="checkbox"/>	
Do the sample IDs on the bottle labels match the COC ⁽¹⁾ ?	<input checked="" type="checkbox"/>	<input type="checkbox"/>	<input type="checkbox"/>	
Is the COC properly relinquished by the client with date and time recorded ⁽¹⁾ ?	<input checked="" type="checkbox"/>	<input type="checkbox"/>	<input type="checkbox"/>	
For volatiles in water – is there headspace (> ¼ inch bubble) present? If yes, contact client and note in narrative.	<input checked="" type="checkbox"/>	<input checked="" type="checkbox"/>	<input type="checkbox"/>	
Are samples preserved that require preservation and was it checked ⁽¹⁾ ? (note ID of confirmation instrument used in comments) / (preservation is not confirmed for subcontracted analyses in order to insure sample integrity)/pH < 2 for samples preserved with HNO ₃ , HCL, H ₂ SO ₄ / (pH > 10 for samples preserved with NaAsO ₂ +NaOH, ZnAc+NaOH)	<input checked="" type="checkbox"/>	<input checked="" type="checkbox"/>	<input type="checkbox"/>	
Additional Comments (if any):				

⁽¹⁾If NO, then contact the client before proceeding with analysis and note date/time and person contacted as well as the corrective action to in the additional comments (above) and the case narrative.

Reviewed by (Project Manager) Jm

5-17-21
Date/Time Reviewed

Origins Laboratory, Inc.

Jm

The results in this report apply to the samples analyzed in accordance with the chain of custody document. This analytical report must be reproduced in its entirety.

Eagle Environmental Consulting, Inc.

8000 W 44th Ave

Wheat Ridge CO 80033

Martin C Eckert III

Project Number: [none]

Project: Noble - Agricultural Products Federal
#32-17

MW-01R

5/14/2021 10:12:00AM

Analyte	Result	Reporting		Units	Dilution	Batch	Analyst	Prepared	Analyzed	Notes
		Limit								

Origins Laboratory, Inc.

Y105275-01 (Water)

Anions by IC 300.0

Chloride	72.4	31.2	mg/L	125	B1E1705		05/17/2021	05/17/2021
Sulfate	421	31.2	"	"	"		"	"

Total Dissolved Solids by 2540C

Total Dissolved Solids	872	5.00	"	1	B1E2012	D	05/20/2021	05/21/2021
------------------------	-----	------	---	---	---------	---	------------	------------

Origins Laboratory, Inc.



The results in this report apply to the samples analyzed in accordance with the chain of custody document. This analytical report must be reproduced in its entirety.

Eagle Environmental Consulting, Inc.
8000 W 44th Ave
Wheat Ridge CO 80033

Martin C Eckert III
Project Number: [none]
Project: Noble - Agricultural Products Federal #32-17

MW-03R

5/14/2021 10:34:00AM

Analyte	Result	Reporting Limit	Units	Dilution	Batch	Analyst	Prepared	Analyzed	Notes
---------	--------	-----------------	-------	----------	-------	---------	----------	----------	-------

Origins Laboratory, Inc. Y105275-02 (Water)

Anions by IC 300.0

Chloride	60.3	31.2	mg/L	125	B1E1705		05/17/2021	05/17/2021	
Sulfate	1060	31.2	"	"	"		"	"	

Total Dissolved Solids by 2540C

Total Dissolved Solids	1160	5.00	"	1	B1E2012	D	05/20/2021	05/21/2021	
------------------------	------	------	---	---	---------	---	------------	------------	--

Origins Laboratory, Inc.



The results in this report apply to the samples analyzed in accordance with the chain of custody document. This analytical report must be reproduced in its entirety.

Eagle Environmental Consulting, Inc.

8000 W 44th Ave

Wheat Ridge CO 80033

Martin C Eckert III

Project Number: [none]

Project: Noble - Agricultural Products Federal
#32-17

MW-06R2

5/14/2021 9:51:00AM

Analyte	Result	Reporting		Units	Dilution	Batch	Analyst	Prepared	Analyzed	Notes
		Limit								

Origins Laboratory, Inc.

Y105275-03 (Water)

Anions by IC 300.0

Chloride	104	31.2	mg/L	125	B1E1705		05/17/2021	05/17/2021
Sulfate	553	31.2	"	"	"		"	"

Total Dissolved Solids by 2540C

Total Dissolved Solids	1220	5.00	"	1	B1E2012	D	05/20/2021	05/21/2021
------------------------	------	------	---	---	---------	---	------------	------------

Origins Laboratory, Inc.

The results in this report apply to the samples analyzed in accordance with the chain of custody document. This analytical report must be reproduced in its entirety.

Eagle Environmental Consulting, Inc.

8000 W 44th Ave

Wheat Ridge CO 80033

Martin C Eckert III

Project Number: [none]

Project: Noble - Agricultural Products Federal
#32-17

MW-13

5/14/2021 11:26:00AM

Analyte	Result	Reporting		Units	Dilution	Batch	Analyst	Prepared	Analyzed	Notes
		Limit								

Origins Laboratory, Inc.

Y105275-04 (Water)

Anions by IC 300.0

Chloride	66.1	31.2	mg/L	125	B1E1705		05/17/2021	05/17/2021
Sulfate	1360	31.2	"	"	"		"	"

Total Dissolved Solids by 2540C

Total Dissolved Solids	1540	5.00	"	1	B1E2012	D	05/20/2021	05/21/2021
------------------------	------	------	---	---	---------	---	------------	------------

Origins Laboratory, Inc.

The results in this report apply to the samples analyzed in accordance with the chain of custody document. This analytical report must be reproduced in its entirety.

Eagle Environmental Consulting, Inc.
8000 W 44th Ave
Wheat Ridge CO 80033

Martin C Eckert III
Project Number: [none]
Project: Noble - Agricultural Products Federal #32-17

Classical Chemistry Parameters - Quality Control Origins Laboratory, Inc.

Analyte	Result	Reporting Limit	Units	Spike Level	Source Result	%REC	%REC Limits	RPD	RPD Limit	Notes
Batch B1E1705 - Filter .45um non acidified										
Blank (B1E1705-BLK1)					Prepared: 05/17/2021 Analyzed: 05/17/2021					
Chloride	ND	0.250	mg/L							
Sulfate	ND	0.250	"							
LCS (B1E1705-BS1)					Prepared: 05/17/2021 Analyzed: 05/17/2021					
Chloride	4.10	0.250	mg/L	4.00		103	90-110			
Sulfate	4.02	0.250	"	4.00		101	90-110			
Matrix Spike (B1E1705-MS1)					Source: Y105258-01		Prepared: 05/17/2021 Analyzed: 05/17/2021			
Chloride	884		mg/L	500	375	102	80-120			
Sulfate	1500		"	500	994	101	80-120			
Matrix Spike Dup (B1E1705-MSD1)					Source: Y105258-01		Prepared: 05/17/2021 Analyzed: 05/17/2021			
Chloride	891		mg/L	500	375	103	80-120	0.751	20	
Sulfate	1500		"	500	994	101	80-120	0.176	20	
Batch B1E2012 - NO PREP										
Blank (B1E2012-BLK1)					Prepared: 05/20/2021 Analyzed: 05/21/2021					
Total Dissolved Solids	ND	5.00	mg/L							
LCS (B1E2012-BS1)					Prepared: 05/20/2021 Analyzed: 05/21/2021					
Total Dissolved Solids	809	5.00	mg/L	716		113	85-115			
Duplicate (B1E2012-D P1)					Source: Y105254-23		Prepared: 05/20/2021 Analyzed: 05/21/2021			
Total Dissolved Solids	1690	5.00	mg/L		1750			3.48	20	

Origins Laboratory, Inc.

The results in this report apply to the samples analyzed in accordance with the chain of custody document. This analytical report must be reproduced in its entirety.

Eagle Environmental Consulting, Inc.

8000 W 44th Ave

Wheat Ridge CO 80033

Martin C Eckert III

Project Number: [none]

Project: Noble - Agricultural Products Federal
#32-17

Notes and Definitions

ND Analyte NOT DETECTED at or above the reporting limit

RPD Relative Percent Difference

All soil results are reported at a wet weight basis.

Origins Laboratory, Inc.



*The results in this report apply to the samples analyzed in
accordance with the chain of custody document. This
analytical report must be reproduced in its entirety.*



May 21, 2021

Eagle Environmental Consulting, Inc.

Martin C Eckert III

8000 W 44th Ave

Wheat Ridge CO 80033

**Project Name - Noble - Agricultural Products
Federal #32-17**

Project Number - [none]

Attached are your analytical results for Noble - Agricultural Products Federal #32-17 received by Origins Laboratory, Inc. May 14, 2021. This project is associated with Origins project number Y105274-01.

The analytical results in the following report were analyzed under the guidelines of EPA Methods. These methods are identified as follows; "SW" are defined in SW-846, "EPA" are defined in 40CFR part 136 and "SM" are defined in the most current revision of Standard Methods For the Examination of Water and Wastewater.

The analytical results apply specifically to the samples and analyses specified per the attached Chain of Custody. As such, this report shall not be reproduced except in full, without the written approval of Origin's laboratory.

Unless otherwise noted, the analytical results for all soil samples are reported on a wet weight basis. All analytical analyses were performed under NELAP guidelines unless noted by a data qualifier.

Any holding time exceedances, deviations from the method specifications or deviations from Origins Laboratory's Standard Operating Procedures are outlined in the case narrative.

Thank you for selecting Origins for your analytical needs. Please contact us with any questions concerning this report, or if we can help with anything at all.

Origins Laboratory, Inc.
303.433.1322
o-squad@oelabinc.com



1725 Elk Place, Denver, CO 80211 | Phone: 303.433.1322 | Fax: 303.265.9645

Eagle Environmental Consulting, Inc.

8000 W 44th Ave

Wheat Ridge CO 80033

Martin C Eckert III

Project Number: [none]

Project: Noble - Agricultural Products Federal
#32-17

CROSS REFERENCE REPORT

Sample ID	Laboratory ID	Matrix	Date Sampled	Date Received
MW-01R	Y105274-01	Water	May 14, 2021 10:12	05/14/2021 11:59
MW-02R	Y105274-02	Water	May 14, 2021 10:25	05/14/2021 11:59
MW-03R	Y105274-03	Water	May 14, 2021 10:34	05/14/2021 11:59
MW-04R	Y105274-04	Water	May 14, 2021 10:51	05/14/2021 11:59
MW-05R	Y105274-05	Water	May 14, 2021 10:43	05/14/2021 11:59
MW-06R2	Y105274-06	Water	May 14, 2021 9:51	05/14/2021 11:59
MW-07	Y105274-07	Water	May 14, 2021 9:10	05/14/2021 11:59
MW-08	Y105274-08	Water	May 14, 2021 9:20	05/14/2021 11:59
MW-09R	Y105274-09	Water	May 14, 2021 9:42	05/14/2021 11:59
MW-10	Y105274-10	Water	May 14, 2021 10:01	05/14/2021 11:59
MW-11	Y105274-11	Water	May 14, 2021 11:04	05/14/2021 11:59
MW-12	Y105274-12	Water	May 14, 2021 11:15	05/14/2021 11:59
MW-13	Y105274-13	Water	May 14, 2021 11:26	05/14/2021 11:59
MW-14	Y105274-14	Water	May 14, 2021 9:32	05/14/2021 11:59

Origins Laboratory, Inc.



*The results in this report apply to the samples analyzed in
accordance with the chain of custody document. This
analytical report must be reproduced in its entirety.*

Eagle Environmental Consulting, Inc.

8000 W 44th Ave

Wheat Ridge CO 80033

Martin C Eckert III

Project Number: [none]

Project: Noble - Agricultural Products Federal
#32-17

Origins Laboratory, Inc.



*The results in this report apply to the samples analyzed in
accordance with the chain of custody document. This
analytical report must be reproduced in its entirety.*

Eagle Environmental Consulting, Inc.
8000 W 44th Ave
Wheat Ridge CO 80033

Martin C Eckert III
Project Number: [none]
Project: Noble - Agricultural Products Federal #32-17

www.originslaboratory.com

page 1 of 2

Y105274

Project Manager: Martin C Eckert III

Project Name: Agricultural Products Federal #32-17

Project Number: -

Samples Collected By: Sam Mendenhall

Client: Eagle Environmental Consulting

Address: 8000 W 44th Ave

Telephone Number: 303-433-0179

Email Address: NCE3@eagle-enviro.com

ORIGINS LABORATORY, INC

Fax: 303.265.9645 | Phone: 303.433.1322 | Denver, CO 80211

Sample ID Description	Date Sampled	Time Sampled	# of Containers	Preservative				Matrix	Analysis	Sample Instructions
				Unpreserved	HCl	HNO ₃	Other			
MW-01B	5-14-21	10:12	3	X				Soil	X	1
MW-02B		10:25	1					Soil	X	2
MW-03B		10:34	1					Soil	X	3
MW-04B		10:51	1					Soil	X	4
MW-05B		10:43	1					Soil	X	5
MW-06B2		09:51	1					Soil	X	6
MW-07		09:16	1					Soil	X	7
MW-08		09:20	1					Soil	X	8
MW-09B		09:42	1					Soil	X	9
MW-10		10:01	1					Soil	X	10

Relinquished By: Sam Mendenhall Date: 5-14-21 Time: 10:19

Relinquished By: Sam Mendenhall Date: 05-14-21 Time: 10:19

Received By: Sam Mendenhall Date: 05-14-21 Time: 10:19

Received By: Sam Mendenhall Date: 05-14-21 Time: 10:19

Turnaround Time: Same Day ☐ 24 Hr ☐ 48 Hr ☐ 72 Hr ☒ Standard

Date Results Needed: Noble

Temp Received: 5.3

*Bill to Jacob

Origins Laboratory, Inc.

Jordan A. Merrill

The results in this report apply to the samples analyzed in accordance with the chain of custody document. This analytical report must be reproduced in its entirety.

Eagle Environmental Consulting, Inc.

8000 W 44th Ave

Wheat Ridge CO 80033

Martin C Eckert III

Project Number: [none]

Project: Noble - Agricultural Products Federal #32-17

Origins Laboratory

F-012207-01-R1
Effective Date: 01/09/12

Sample Receipt Checklist

Origins Work Order: Y105274

Client: Eagle

Client Project ID: Ag Products Federal 32

Checklist Completed by: JG

Shipped Via: HD

(UPS, FedEx, Hand Delivered, Pick-up, etc.)

Date/time completed: 5/14/21

Airbill #: N/A

Matrix(s) Received: (Check all that apply): Soil/Solid ☒ Water ☐ Other: ☐

Cooler Number/Temperature: 1 / 5.3 °C 1 / 1 °C 1 / 1 °C (Describe)

Thermometer ID: T003

Requirement Description	Yes	No	N/A	Comments (if any)
If samples require cooling, was the temperature between 0°C to ≤ 5°C ⁽¹⁾ ?	<input checked="" type="checkbox"/>	<input type="checkbox"/>	<input type="checkbox"/>	
Is there ice present (document if blue ice is used)	<input checked="" type="checkbox"/>	<input type="checkbox"/>	<input type="checkbox"/>	
Are custody seals present on cooler? (if so, document in comments if they are signed and dated, broken or intact)	<input type="checkbox"/>	<input checked="" type="checkbox"/>	<input type="checkbox"/>	
Are custody seals present on each sample container? (if so, document in comments if they are signed and dated, broken or intact)	<input type="checkbox"/>	<input checked="" type="checkbox"/>	<input type="checkbox"/>	
Were all samples received intact ⁽¹⁾ ?	<input checked="" type="checkbox"/>	<input type="checkbox"/>	<input type="checkbox"/>	
Was adequate sample volume provided ⁽¹⁾ ?	<input checked="" type="checkbox"/>	<input type="checkbox"/>	<input type="checkbox"/>	
Are short holding time analytes or samples with HTs due within 48 hours present ⁽¹⁾ ?	<input type="checkbox"/>	<input checked="" type="checkbox"/>	<input type="checkbox"/>	
Is a chain-of-custody (COC) present and filled out completely ⁽¹⁾ ?	<input checked="" type="checkbox"/>	<input type="checkbox"/>	<input type="checkbox"/>	
Does the COC agree with the number and type of sample bottles received ⁽¹⁾ ?	<input checked="" type="checkbox"/>	<input type="checkbox"/>	<input type="checkbox"/>	
Do the sample IDs on the bottle labels match the COC ⁽¹⁾ ?	<input checked="" type="checkbox"/>	<input type="checkbox"/>	<input type="checkbox"/>	
Is the COC properly relinquished by the client with date and time recorded ⁽¹⁾ ?	<input checked="" type="checkbox"/>	<input type="checkbox"/>	<input type="checkbox"/>	
For volatiles in water – is there headspace (> ¼ inch bubble) present? If yes, contact client and note in narrative.	<input type="checkbox"/>	<input checked="" type="checkbox"/>	<input type="checkbox"/>	
Are samples preserved that require preservation and was it checked ⁽¹⁾ ? (note ID of confirmation instrument used in comments) / (preservation is not confirmed for subcontracted analyses in order to insure sample integrity)/(pH < 2 for samples preserved with HNO ₃ , HCL, H ₂ SO ₄) / (pH > 10 for samples preserved with NaAsO ₂ +NaOH, ZnAc+NaOH)	<input type="checkbox"/>	<input checked="" type="checkbox"/>	<input type="checkbox"/>	
Additional Comments (if any):				

⁽¹⁾If NO, then contact the client before proceeding with analysis and note date/time and person contacted as well as the corrective action to in the additional comments (above) and the case narrative.

Reviewed by JM (Project Manager)

5-17-21
Date/Time Reviewed

Origins Laboratory, Inc.

Jordan A. Merrill

The results in this report apply to the samples analyzed in accordance with the chain of custody document. This analytical report must be reproduced in its entirety.

Eagle Environmental Consulting, Inc.
8000 W 44th Ave
Wheat Ridge CO 80033

Martin C Eckert III
Project Number: [none]
Project: Noble - Agricultural Products Federal #32-17

MW-01R

5/14/2021 10:12:00AM

Analyte	Result	Reporting Limit	Units	Dilution	Batch	Analyst	Prepared	Analyzed	Notes
---------	--------	-----------------	-------	----------	-------	---------	----------	----------	-------

Origins Laboratory, Inc. Y105274-01 (Water)

BTEX+N+TMBs by 8260D

1,2,4-Trimethylbenzene	ND	1.00	ug/L	1	B1E1703	TEM	05/17/2021	05/17/2021	U
1,3,5-Trimethylbenzene	ND	1.00	"	"	"	TEM	"	"	U
Benzene	1.90	1.00	"	"	"	TEM	"	"	
Ethylbenzene	ND	1.00	"	"	"	TEM	"	"	U
Naphthalene	ND	4.00	"	"	"	TEM	"	"	U
Toluene	ND	1.00	"	"	"	TEM	"	"	U
Xylenes, total	ND	1.00	"	"	"	TEM	"	"	U

Surrogate: 1,2-Dichloroethane-d4	96.3 %	70-130	"	"	"
Surrogate: Toluene-d8	102 %	70-130	"	"	"
Surrogate: 4-Bromofluorobenzene	101 %	70-130	"	"	"

Origins Laboratory, Inc.



The results in this report apply to the samples analyzed in accordance with the chain of custody document. This analytical report must be reproduced in its entirety.

Eagle Environmental Consulting, Inc.
8000 W 44th Ave
Wheat Ridge CO 80033

Martin C Eckert III
Project Number: [none]
Project: Noble - Agricultural Products Federal #32-17

MW-02R

5/14/2021 10:25:00AM

Analyte	Result	Reporting Limit	Units	Dilution	Batch	Analyst	Prepared	Analyzed	Notes
---------	--------	-----------------	-------	----------	-------	---------	----------	----------	-------

Origins Laboratory, Inc. Y105274-02 (Water)

BTEX+N+TMBs by 8260D

1,2,4-Trimethylbenzene	ND	1.00	ug/L	1	B1E1703	TEM	05/17/2021	05/17/2021	U
1,3,5-Trimethylbenzene	ND	1.00	"	"	"	TEM	"	"	U
Benzene	ND	1.00	"	"	"	TEM	"	"	U
Ethylbenzene	ND	1.00	"	"	"	TEM	"	"	U
Naphthalene	ND	4.00	"	"	"	TEM	"	"	U
Toluene	ND	1.00	"	"	"	TEM	"	"	U
Xylenes, total	ND	1.00	"	"	"	TEM	"	"	U

Surrogate: 1,2-Dichloroethane-d4	99.8 %	70-130	"	"	"
Surrogate: Toluene-d8	102 %	70-130	"	"	"
Surrogate: 4-Bromofluorobenzene	93.1 %	70-130	"	"	"

Origins Laboratory, Inc.



The results in this report apply to the samples analyzed in accordance with the chain of custody document. This analytical report must be reproduced in its entirety.

Eagle Environmental Consulting, Inc.

8000 W 44th Ave

Wheat Ridge CO 80033

Martin C Eckert III

Project Number: [none]

Project: Noble - Agricultural Products Federal #32-17

MW-03R

5/14/2021 10:34:00AM

Analyte	Result	Reporting Limit	Units	Dilution	Batch	Analyst	Prepared	Analyzed	Notes
---------	--------	-----------------	-------	----------	-------	---------	----------	----------	-------

Origins Laboratory, Inc.

Y105274-03 (Water)

BTEX+N+TMBs by 8260D

1,2,4-Trimethylbenzene	23.4	1.00	ug/L	1	B1E1703	TEM	05/17/2021	05/17/2021	
1,3,5-Trimethylbenzene	26.2	1.00	"	"	"	TEM	"	"	
Benzene	6.26	1.00	"	"	"	TEM	"	"	
Ethylbenzene	1.00	1.00	"	"	"	TEM	"	"	
Naphthalene	ND	4.00	"	"	"	TEM	"	"	U
Toluene	ND	1.00	"	"	"	TEM	"	"	U
Xylenes, total	53.4	1.00	"	"	"	TEM	"	"	

Surrogate: 1,2-Dichloroethane-d4

99.2 %

70-130

"

"

"

Surrogate: Toluene-d8

103 %

70-130

"

"

"

Surrogate: 4-Bromofluorobenzene

92.8 %

70-130

"

"

"

Origins Laboratory, Inc.

The results in this report apply to the samples analyzed in accordance with the chain of custody document. This analytical report must be reproduced in its entirety.

Eagle Environmental Consulting, Inc.
8000 W 44th Ave
Wheat Ridge CO 80033

Martin C Eckert III
Project Number: [none]
Project: Noble - Agricultural Products Federal #32-17

MW-04R

5/14/2021 10:51:00AM

Analyte	Result	Reporting Limit	Units	Dilution	Batch	Analyst	Prepared	Analyzed	Notes
---------	--------	-----------------	-------	----------	-------	---------	----------	----------	-------

Origins Laboratory, Inc. Y105274-04 (Water)

BTEX+N+TMBs by 8260D

1,2,4-Trimethylbenzene	94.1	1.00	ug/L	1	B1E1703	TEM	05/17/2021	05/17/2021	
1,3,5-Trimethylbenzene	ND	1.00	"	"	"	TEM	"	"	U
Benzene	13.2	1.00	"	"	"	TEM	"	"	
Ethylbenzene	23.6	1.00	"	"	"	TEM	"	"	
Naphthalene	ND	4.00	"	"	"	TEM	"	"	U
Toluene	ND	1.00	"	"	"	TEM	"	"	U
Xylenes, total	87.8	1.00	"	"	"	TEM	"	"	

Surrogate: 1,2-Dichloroethane-d4	97.6 %	70-130			"	"	"
Surrogate: Toluene-d8	102 %	70-130			"	"	"
Surrogate: 4-Bromofluorobenzene	94.4 %	70-130			"	"	"

Origins Laboratory, Inc.



The results in this report apply to the samples analyzed in accordance with the chain of custody document. This analytical report must be reproduced in its entirety.

Eagle Environmental Consulting, Inc.
8000 W 44th Ave
Wheat Ridge CO 80033

Martin C Eckert III
Project Number: [none]
Project: Noble - Agricultural Products Federal #32-17

MW-05R

5/14/2021 10:43:00AM

Analyte	Result	Reporting Limit	Units	Dilution	Batch	Analyst	Prepared	Analyzed	Notes
---------	--------	-----------------	-------	----------	-------	---------	----------	----------	-------

Origins Laboratory, Inc. Y105274-05 (Water)

BTEX+N+TMBs by 8260D

1,2,4-Trimethylbenzene	ND	1.00	ug/L	1	B1E1703	TEM	05/17/2021	05/17/2021	U
1,3,5-Trimethylbenzene	ND	1.00	"	"	"	TEM	"	"	U
Benzene	ND	1.00	"	"	"	TEM	"	"	U
Ethylbenzene	ND	1.00	"	"	"	TEM	"	"	U
Naphthalene	ND	4.00	"	"	"	TEM	"	"	U
Toluene	ND	1.00	"	"	"	TEM	"	"	U
Xylenes, total	4.57	1.00	"	"	"	TEM	"	"	

Surrogate: 1,2-Dichloroethane-d4
Surrogate: Toluene-d8
Surrogate: 4-Bromofluorobenzene

102 % 70-130
101 % 70-130
91.8 % 70-130

" "
" "
" "

Origins Laboratory, Inc.



The results in this report apply to the samples analyzed in accordance with the chain of custody document. This analytical report must be reproduced in its entirety.

Eagle Environmental Consulting, Inc.
8000 W 44th Ave
Wheat Ridge CO 80033

Martin C Eckert III
Project Number: [none]
Project: Noble - Agricultural Products Federal #32-17

MW-06R2

5/14/2021 9:51:00AM

Analyte	Result	Reporting Limit	Units	Dilution	Batch	Analyst	Prepared	Analyzed	Notes
---------	--------	-----------------	-------	----------	-------	---------	----------	----------	-------

Origins Laboratory, Inc. Y105274-06 (Water)

BTEX+N+TMBs by 8260D

1,2,4-Trimethylbenzene	ND	1.00	ug/L	1	B1E1703	TEM	05/17/2021	05/17/2021	U
1,3,5-Trimethylbenzene	ND	1.00	"	"	"	TEM	"	"	U
Benzene	ND	1.00	"	"	"	TEM	"	"	U
Ethylbenzene	ND	1.00	"	"	"	TEM	"	"	U
Naphthalene	ND	4.00	"	"	"	TEM	"	"	U
Toluene	ND	1.00	"	"	"	TEM	"	"	U
Xylenes, total	ND	1.00	"	"	"	TEM	"	"	U

Surrogate: 1,2-Dichloroethane-d4	103 %	70-130	"	"	"
Surrogate: Toluene-d8	100 %	70-130	"	"	"
Surrogate: 4-Bromofluorobenzene	92.3 %	70-130	"	"	"

Origins Laboratory, Inc.



The results in this report apply to the samples analyzed in accordance with the chain of custody document. This analytical report must be reproduced in its entirety.

Eagle Environmental Consulting, Inc.
8000 W 44th Ave
Wheat Ridge CO 80033

Martin C Eckert III
Project Number: [none]
Project: Noble - Agricultural Products Federal #32-17

MW-07

5/14/2021 9:10:00AM

Analyte	Result	Reporting Limit	Units	Dilution	Batch	Analyst	Prepared	Analyzed	Notes
---------	--------	-----------------	-------	----------	-------	---------	----------	----------	-------

Origins Laboratory, Inc. Y105274-07 (Water)

BTEX+N+TMBs by 8260D

1,2,4-Trimethylbenzene	ND	1.00	ug/L	1	B1E1703	TEM	05/17/2021	05/17/2021	U
1,3,5-Trimethylbenzene	ND	1.00	"	"	"	TEM	"	"	U
Benzene	ND	1.00	"	"	"	TEM	"	"	U
Ethylbenzene	ND	1.00	"	"	"	TEM	"	"	U
Naphthalene	ND	4.00	"	"	"	TEM	"	"	U
Toluene	ND	1.00	"	"	"	TEM	"	"	U
Xylenes, total	ND	1.00	"	"	"	TEM	"	"	U

Surrogate: 1,2-Dichloroethane-d4	102 %	70-130	"	"	"
Surrogate: Toluene-d8	99.9 %	70-130	"	"	"
Surrogate: 4-Bromofluorobenzene	103 %	70-130	"	"	"

Origins Laboratory, Inc.



The results in this report apply to the samples analyzed in accordance with the chain of custody document. This analytical report must be reproduced in its entirety.

Eagle Environmental Consulting, Inc.
8000 W 44th Ave
Wheat Ridge CO 80033

Martin C Eckert III
Project Number: [none]
Project: Noble - Agricultural Products Federal #32-17

MW-08

5/14/2021 9:20:00AM

Analyte	Result	Reporting Limit	Units	Dilution	Batch	Analyst	Prepared	Analyzed	Notes
---------	--------	-----------------	-------	----------	-------	---------	----------	----------	-------

Origins Laboratory, Inc. Y105274-08 (Water)

BTEX+N+TMBs by 8260D

1,2,4-Trimethylbenzene	ND	1.00	ug/L	1	B1E1703	TEM	05/17/2021	05/17/2021	U
1,3,5-Trimethylbenzene	ND	1.00	"	"	"	TEM	"	"	U
Benzene	ND	1.00	"	"	"	TEM	"	"	U
Ethylbenzene	ND	1.00	"	"	"	TEM	"	"	U
Naphthalene	ND	4.00	"	"	"	TEM	"	"	U
Toluene	ND	1.00	"	"	"	TEM	"	"	U
Xylenes, total	ND	1.00	"	"	"	TEM	"	"	U

Surrogate: 1,2-Dichloroethane-d4	104 %	70-130	"	"	"
Surrogate: Toluene-d8	101 %	70-130	"	"	"
Surrogate: 4-Bromofluorobenzene	92.0 %	70-130	"	"	"

Origins Laboratory, Inc.



The results in this report apply to the samples analyzed in accordance with the chain of custody document. This analytical report must be reproduced in its entirety.

Eagle Environmental Consulting, Inc.
8000 W 44th Ave
Wheat Ridge CO 80033

Martin C Eckert III
Project Number: [none]
Project: Noble - Agricultural Products Federal #32-17

MW-09R

5/14/2021 9:42:00AM

Analyte	Result	Reporting Limit	Units	Dilution	Batch	Analyst	Prepared	Analyzed	Notes
---------	--------	-----------------	-------	----------	-------	---------	----------	----------	-------

Origins Laboratory, Inc. Y105274-09 (Water)

BTEX+N+TMBs by 8260D

1,2,4-Trimethylbenzene	ND	1.00	ug/L	1	B1E1703	TEM	05/17/2021	05/17/2021	U
1,3,5-Trimethylbenzene	ND	1.00	"	"	"	TEM	"	"	U
Benzene	ND	1.00	"	"	"	TEM	"	"	U
Ethylbenzene	ND	1.00	"	"	"	TEM	"	"	U
Naphthalene	ND	4.00	"	"	"	TEM	"	"	U
Toluene	ND	1.00	"	"	"	TEM	"	"	U
Xylenes, total	ND	1.00	"	"	"	TEM	"	"	U

Surrogate: 1,2-Dichloroethane-d4	105 %	70-130	"	"	"
Surrogate: Toluene-d8	101 %	70-130	"	"	"
Surrogate: 4-Bromofluorobenzene	77.3 %	70-130	"	"	"

Origins Laboratory, Inc.



The results in this report apply to the samples analyzed in accordance with the chain of custody document. This analytical report must be reproduced in its entirety.

Eagle Environmental Consulting, Inc.
8000 W 44th Ave
Wheat Ridge CO 80033

Martin C Eckert III
Project Number: [none]
Project: Noble - Agricultural Products Federal #32-17

MW-10

5/14/2021 10:01:00AM

Analyte	Result	Reporting Limit	Units	Dilution	Batch	Analyst	Prepared	Analyzed	Notes
---------	--------	-----------------	-------	----------	-------	---------	----------	----------	-------

Origins Laboratory, Inc. Y105274-10 (Water)

BTEX+N+TMBs by 8260D

1,2,4-Trimethylbenzene	ND	1.00	ug/L	1	B1E1703	TEM	05/17/2021	05/17/2021	U
1,3,5-Trimethylbenzene	ND	1.00	"	"	"	TEM	"	"	U
Benzene	ND	1.00	"	"	"	TEM	"	"	U
Ethylbenzene	ND	1.00	"	"	"	TEM	"	"	U
Naphthalene	ND	4.00	"	"	"	TEM	"	"	U
Toluene	ND	1.00	"	"	"	TEM	"	"	U
Xylenes, total	ND	1.00	"	"	"	TEM	"	"	U

Surrogate: 1,2-Dichloroethane-d4	103 %	70-130	"	"	"
Surrogate: Toluene-d8	99.9 %	70-130	"	"	"
Surrogate: 4-Bromofluorobenzene	94.4 %	70-130	"	"	"

Origins Laboratory, Inc.



The results in this report apply to the samples analyzed in accordance with the chain of custody document. This analytical report must be reproduced in its entirety.

Eagle Environmental Consulting, Inc.
8000 W 44th Ave
Wheat Ridge CO 80033

Martin C Eckert III
Project Number: [none]
Project: Noble - Agricultural Products Federal #32-17

MW-11

5/14/2021 11:04:00AM

Analyte	Result	Reporting Limit	Units	Dilution	Batch	Analyst	Prepared	Analyzed	Notes
---------	--------	-----------------	-------	----------	-------	---------	----------	----------	-------

Origins Laboratory, Inc. Y105274-11 (Water)

BTEX+N+TMBs by 8260D

1,2,4-Trimethylbenzene	ND	1.00	ug/L	1	B1E1703	TEM	05/17/2021	05/17/2021	U
1,3,5-Trimethylbenzene	ND	1.00	"	"	"	TEM	"	"	U
Benzene	ND	1.00	"	"	"	TEM	"	"	U
Ethylbenzene	ND	1.00	"	"	"	TEM	"	"	U
Naphthalene	ND	4.00	"	"	"	TEM	"	"	U
Toluene	ND	1.00	"	"	"	TEM	"	"	U
Xylenes, total	ND	1.00	"	"	"	TEM	"	"	U

Surrogate: 1,2-Dichloroethane-d4	105 %	70-130	"	"	"
Surrogate: Toluene-d8	98.2 %	70-130	"	"	"
Surrogate: 4-Bromofluorobenzene	93.6 %	70-130	"	"	"

Origins Laboratory, Inc.



The results in this report apply to the samples analyzed in accordance with the chain of custody document. This analytical report must be reproduced in its entirety.

Eagle Environmental Consulting, Inc.
8000 W 44th Ave
Wheat Ridge CO 80033

Martin C Eckert III
Project Number: [none]
Project: Noble - Agricultural Products Federal #32-17

MW-12

5/14/2021 11:15:00AM

Analyte	Result	Reporting Limit	Units	Dilution	Batch	Analyst	Prepared	Analyzed	Notes
---------	--------	-----------------	-------	----------	-------	---------	----------	----------	-------

Origins Laboratory, Inc. Y105274-12 (Water)

BTEX+N+TMBs by 8260D

1,2,4-Trimethylbenzene	ND	1.00	ug/L	1	B1E1703	TEM	05/17/2021	05/17/2021	U
1,3,5-Trimethylbenzene	ND	1.00	"	"	"	TEM	"	"	U
Benzene	ND	1.00	"	"	"	TEM	"	"	U
Ethylbenzene	ND	1.00	"	"	"	TEM	"	"	U
Naphthalene	ND	4.00	"	"	"	TEM	"	"	U
Toluene	ND	1.00	"	"	"	TEM	"	"	U
Xylenes, total	ND	1.00	"	"	"	TEM	"	"	U

Surrogate: 1,2-Dichloroethane-d4	105 %	70-130	"	"	"
Surrogate: Toluene-d8	98.3 %	70-130	"	"	"
Surrogate: 4-Bromofluorobenzene	94.1 %	70-130	"	"	"

Origins Laboratory, Inc.



The results in this report apply to the samples analyzed in accordance with the chain of custody document. This analytical report must be reproduced in its entirety.

Eagle Environmental Consulting, Inc.
8000 W 44th Ave
Wheat Ridge CO 80033

Martin C Eckert III
Project Number: [none]
Project: Noble - Agricultural Products Federal #32-17

MW-13

5/14/2021 11:26:00AM

Analyte	Result	Reporting Limit	Units	Dilution	Batch	Analyst	Prepared	Analyzed	Notes
---------	--------	-----------------	-------	----------	-------	---------	----------	----------	-------

Origins Laboratory, Inc. Y105274-13 (Water)

BTEX+N+TMBs by 8260D

1,2,4-Trimethylbenzene	ND	1.00	ug/L	1	B1E1703	TEM	05/17/2021	05/17/2021	U
1,3,5-Trimethylbenzene	ND	1.00	"	"	"	TEM	"	"	U
Benzene	ND	1.00	"	"	"	TEM	"	"	U
Ethylbenzene	ND	1.00	"	"	"	TEM	"	"	U
Naphthalene	ND	4.00	"	"	"	TEM	"	"	U
Toluene	ND	1.00	"	"	"	TEM	"	"	U
Xylenes, total	ND	1.00	"	"	"	TEM	"	"	U

Surrogate: 1,2-Dichloroethane-d4	107 %	70-130	"	"	"
Surrogate: Toluene-d8	98.8 %	70-130	"	"	"
Surrogate: 4-Bromofluorobenzene	92.4 %	70-130	"	"	"

Origins Laboratory, Inc.



The results in this report apply to the samples analyzed in accordance with the chain of custody document. This analytical report must be reproduced in its entirety.

Eagle Environmental Consulting, Inc.
8000 W 44th Ave
Wheat Ridge CO 80033

Martin C Eckert III
Project Number: [none]
Project: Noble - Agricultural Products Federal #32-17

MW-14

5/14/2021 9:32:00AM

Analyte	Result	Reporting Limit	Units	Dilution	Batch	Analyst	Prepared	Analyzed	Notes
---------	--------	-----------------	-------	----------	-------	---------	----------	----------	-------

Origins Laboratory, Inc. Y105274-14 (Water)

BTEX+N+TMBs by 8260D

1,2,4-Trimethylbenzene	ND	1.00	ug/L	1	B1E1703	TEM	05/17/2021	05/17/2021	U
1,3,5-Trimethylbenzene	ND	1.00	"	"	"	TEM	"	"	U
Benzene	ND	1.00	"	"	"	TEM	"	"	U
Ethylbenzene	ND	1.00	"	"	"	TEM	"	"	U
Naphthalene	ND	4.00	"	"	"	TEM	"	"	U
Toluene	ND	1.00	"	"	"	TEM	"	"	U
Xylenes, total	ND	1.00	"	"	"	TEM	"	"	U

Surrogate: 1,2-Dichloroethane-d4	107 %	70-130	"	"	"
Surrogate: Toluene-d8	100 %	70-130	"	"	"
Surrogate: 4-Bromofluorobenzene	92.8 %	70-130	"	"	"

Origins Laboratory, Inc.



The results in this report apply to the samples analyzed in accordance with the chain of custody document. This analytical report must be reproduced in its entirety.

Eagle Environmental Consulting, Inc.

8000 W 44th Ave

Wheat Ridge CO 80033

Martin C Eckert III

Project Number: [none]

Project: Noble - Agricultural Products Federal #32-17

Volatile Organic Compounds by GC/MS SW846 8260D - Quality Control
Origins Laboratory, Inc.

Analyte	Result	Reporting Limit	Units	Spike Level	Source Result	%REC	%REC Limits	RPD	RPD Limit	Notes
---------	--------	-----------------	-------	-------------	---------------	------	-------------	-----	-----------	-------

Batch B1E1703 - EPA 5030B (Water)

Blank (B1E1703-BLK1)

Prepared: 05/17/2021 Analyzed: 05/17/2021

1,2,4-Trimethylbenzene	ND	1.00	ug/L							U
1,3,5-Trimethylbenzene	ND	1.00	"							U
Benzene	ND	1.00	"							U
Ethylbenzene	ND	1.00	"							U
Naphthalene	ND	4.00	"							U
Toluene	ND	1.00	"							U
Xylenes, total	ND	1.00	"							U
Surrogate: 1,2-Dichloroethane-d4	64		"	62.5		102	70-130			
Surrogate: Toluene-d8	61		"	62.5		98.4	70-130			
Surrogate: 4-Bromofluorobenzene	57		"	62.5		90.8	70-130			

Origins Laboratory, Inc.



The results in this report apply to the samples analyzed in accordance with the chain of custody document. This analytical report must be reproduced in its entirety.

Eagle Environmental Consulting, Inc.

8000 W 44th Ave

Wheat Ridge CO 80033

Martin C Eckert III

Project Number: [none]

Project: Noble - Agricultural Products Federal #32-17

Volatile Organic Compounds by GC/MS SW846 8260D - Quality Control
Origins Laboratory, Inc.

Analyte	Result	Reporting Limit	Units	Spike Level	Source Result	%REC	%REC Limits	RPD	RPD Limit	Notes
---------	--------	-----------------	-------	-------------	---------------	------	-------------	-----	-----------	-------

Batch B1E1703 - EPA 5030B (Water)

LCS (B1E1703-BS1)

Prepared: 05/17/2021 Analyzed: 05/17/2021

1,2,4-Trimethylbenzene	51.7	1.00	ug/L	50.0		103	70-130			
1,3,5-Trimethylbenzene	56.3	1.00	"	50.0		113	70-130			
Benzene	56.2	1.00	"	50.0		112	70-130			
Ethylbenzene	58.9	1.00	"	50.0		118	70-130			
m,p-Xylene	119	2.00	"	100		119	70-130			
Naphthalene	51.3	4.00	"	50.0		103	70-130			
o-Xylene	59.3	1.00	"	50.0		119	70-130			
Toluene	59.4	1.00	"	50.0		119	70-130			
Surrogate: 1,2-Dichloroethane-d4	68		"	62.5		108	70-130			
Surrogate: Toluene-d8	65		"	62.5		103	70-130			
Surrogate: 4-Bromofluorobenzene	59		"	62.5		94.2	70-130			

Origins Laboratory, Inc.



The results in this report apply to the samples analyzed in accordance with the chain of custody document. This analytical report must be reproduced in its entirety.

Eagle Environmental Consulting, Inc.

8000 W 44th Ave

Wheat Ridge CO 80033

Martin C Eckert III

Project Number: [none]

Project: Noble - Agricultural Products Federal #32-17

Volatile Organic Compounds by GC/MS SW846 8260D - Quality Control
Origins Laboratory, Inc.

Analyte	Result	Reporting Limit	Units	Spike Level	Source Result	%REC	%REC Limits	RPD	RPD Limit	Notes
---------	--------	-----------------	-------	-------------	---------------	------	-------------	-----	-----------	-------

Batch B1E1703 - EPA 5030B (Water)

Matrix Spike (B1E1703-MS1)		Source: Y105274-01			Prepared: 05/17/2021 Analyzed: 05/17/2021					
1,2,4-Trimethylbenzene	49.6	1.00	ug/L	50.0	0.320	98.5	70-130			
1,3,5-Trimethylbenzene	54.4	1.00	"	50.0	0.430	108	70-130			
Benzene	51.4	1.00	"	50.0	1.90	99.0	70-130			
Ethylbenzene	52.9	1.00	"	50.0	0.240	105	70-130			
m,p-Xylene	107	2.00	"	100	1.72	105	70-130			
Naphthalene	50.6	4.00	"	50.0	ND	101	70-130			
o-Xylene	51.2	1.00	"	50.0	0.200	102	70-130			
Toluene	52.5	1.00	"	50.0	ND	105	70-130			
Surrogate: 1,2-Dichloroethane-d4	61		"	62.5		98.1	70-130			
Surrogate: Toluene-d8	65		"	62.5		105	70-130			
Surrogate: 4-Bromofluorobenzene	60		"	62.5		96.2	70-130			

Origins Laboratory, Inc.



The results in this report apply to the samples analyzed in accordance with the chain of custody document. This analytical report must be reproduced in its entirety.

Eagle Environmental Consulting, Inc.
8000 W 44th Ave
Wheat Ridge CO 80033

Martin C Eckert III
Project Number: [none]
Project: Noble - Agricultural Products Federal #32-17

Volatile Organic Compounds by GC/MS SW846 8260D - Quality Control
Origins Laboratory, Inc.

Analyte	Result	Reporting Limit	Units	Spike Level	Source Result	%REC	%REC Limits	RPD	RPD Limit	Notes
Batch B1E1703 - EPA 5030B (Water)										
Matrix Spike Dup (B1E1703-MSD1)										
					Source: Y105274-01					
										Prepared: 05/17/2021 Analyzed: 05/17/2021
1,2,4-Trimethylbenzene	44.1	1.00	ug/L	50.0	0.320	87.5	70-130	11.8	20	
1,3,5-Trimethylbenzene	46.7	1.00	"	50.0	0.430	92.5	70-130	15.3	20	
Benzene	45.8	1.00	"	50.0	1.90	87.8	70-130	11.5	20	
Ethylbenzene	45.8	1.00	"	50.0	0.240	91.1	70-130	14.5	20	
m,p-Xylene	95.6	2.00	"	100	1.72	93.9	70-130	11.4	20	
Naphthalene	52.2	4.00	"	50.0	ND	104	70-130	3.14	20	
o-Xylene	46.8	1.00	"	50.0	0.200	93.1	70-130	9.05	20	
Toluene	46.3	1.00	"	50.0	ND	92.6	70-130	12.6	20	
Surrogate: 1,2-Dichloroethane-d4	62		"	62.5		98.7	70-130			
Surrogate: Toluene-d8	65		"	62.5		104	70-130			
Surrogate: 4-Bromofluorobenzene	60		"	62.5		96.7	70-130			

Origins Laboratory, Inc.



The results in this report apply to the samples analyzed in accordance with the chain of custody document. This analytical report must be reproduced in its entirety.

Eagle Environmental Consulting, Inc.

8000 W 44th Ave

Wheat Ridge CO 80033

Martin C Eckert III

Project Number: [none]

Project: Noble - Agricultural Products Federal
#32-17

Notes and Definitions

U Sample is Non-Detect.

ND Analyte NOT DETECTED at or above the reporting limit

RPD Relative Percent Difference

All soil results are reported at a wet weight basis.

Origins Laboratory, Inc.



The results in this report apply to the samples analyzed in accordance with the chain of custody document. This analytical report must be reproduced in its entirety.