



Verdad Resources LLC

Schlumberger

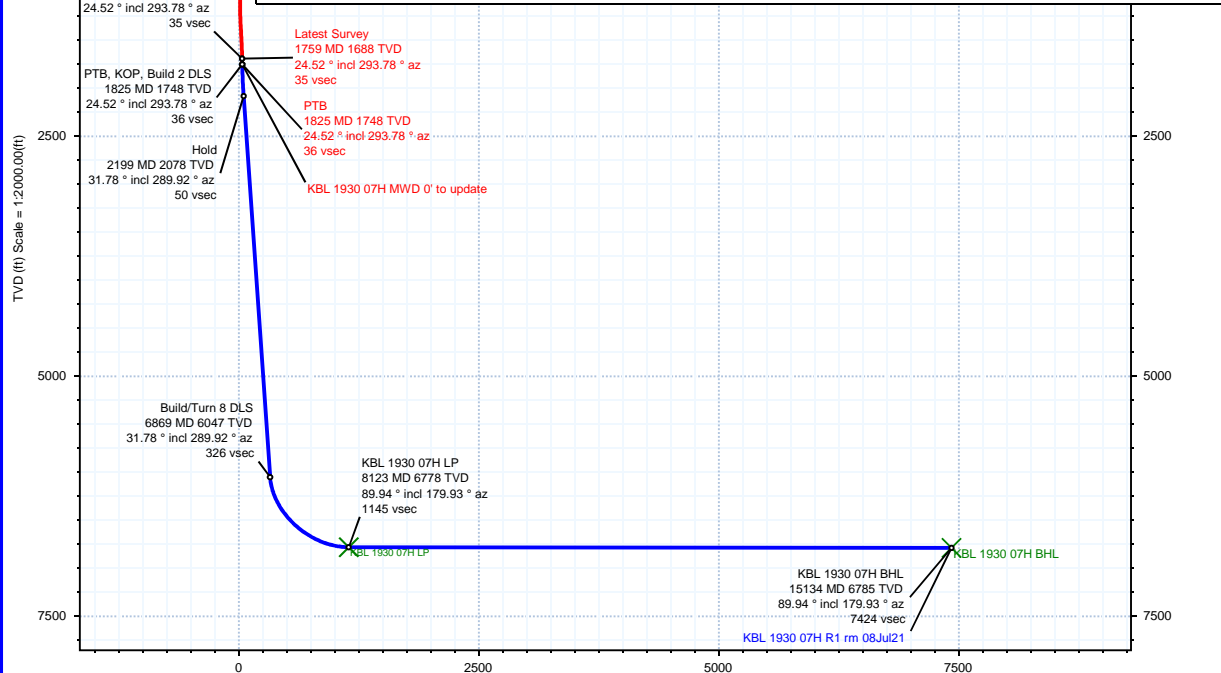
Rev 1

Borehole:	Well:	Field:	Structure:
Original Hole	KBL 1930 07H	CO, Weld County (NAD 83 NZ) - 2019	Verdad Resources 19-02N-63W (KBL 1930 Pad)

Gravity & Magnetic Parameters	Surface Location	NAD83 Colorado State Plane, Northern Zone, US Feet	Miscellaneous
Model: HDGM 2021	Lat: N 40 7 17.79	Northing: 1288791.8ftUS	Slot: KBL 1930 07H
Dip: 66.474°	Long: W 104 28 41.82	Easting: 3285720.67ftUS	TVD Ref: KB 21ft(4881ft above MSL)
Date: 14-Jul-2021		Scale Fact: 0.99995937	Plan: KBL 1930 07H R1 rm 08Jul21
MagDec: 8.013°			
FS: 51858.915mT			
Gravity FS: 999.019mgn (9.80665 Based)			

Target Description		Surface Location		Grid Coord		Local Coord	
Northing: 1288791.80378721		Easting: 3285720.66948594		Latitude: N 40 7 17.79		Longitude: W 104 28 41.82	
VSec Azimuth: 206.36		TVD		VSec		N(+)/S(-)	
E(+)/W(-)		DLS		N(+)/S(-)		E(+)/W(-)	
KBL 1930 Pad Sec 19 460' SB - S	N 40 7 17.79	W 104 28 41.82	1288791.80	3285720.67	4881.00	0.00	0.00
KBL 1930 Pad Sec 19-30 460' SB	N 40 7 17.79	W 104 28 41.82	1288791.80	3285720.67	4881.00	0.00	0.00
KBL 1930 Pad Sec 19-30	N 40 7 17.79	W 104 28 41.82	1288791.80	3285720.67	4881.00	0.00	0.00
KBL 1930 Pad Sec 19 - Mid line	N 40 7 17.79	W 104 28 41.82	1288791.80	3285720.67	4881.00	0.00	0.00
KBL 1930 Pad Sec 19 460' SB - N	N 40 7 17.79	W 104 28 41.82	1288791.80	3285720.67	4881.00	0.00	0.00
KBL 1930 07H LP	N 40 7 21.34	W 104 29 24.37	1289113.10	3282411.84	6778.00	1145.43	-3305.04
KBL 1930 07H BHL	N 40 6 12.05	W 104 29 24.24	1282102.76	3282501.48	6785.00	7423.69	-3296.19

Critical Points								
Critical Point	MD	INCL	AZIM	TVD	VSEC	N(+)/S(-)	E(+)/W(-)	DLS
Tie In	1759.00	24.52	293.78	1687.96	34.53	149.83	-380.12	
PTB, Build 2 DLS	1825.00	24.52	293.78	1748.01	35.76	160.87	-405.18	0.00
Hold	2198.95	31.78	289.92	2077.54	50.31	225.81	-569.00	2.00
Build/Turn 8 DLS	6868.82	31.78	289.92	6047.37	326.03	1063.82	-2881.10	0.00
KBL 1930 07H LP	8122.88	89.94	179.93	6778.00	1145.43	359.41	-3305.04	8.00
KBL 1930 07H BHL	15134.09	89.94	179.93	6785.00	7423.69	-6651.79	-3296.19	0.00



Vertical Section (ft) Azim = 206.36° Scale = 1:2000.00(ft) Origin = 0N/-S, 0E/-W

Proposal



True North
Tot Corr (M->T 8.013°)
Mag Dec (8.013°)
Grid Conv (0.660°)

EW (ft) Scale =

