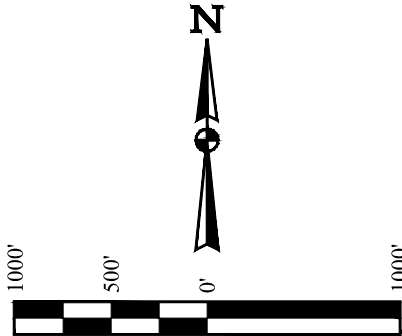


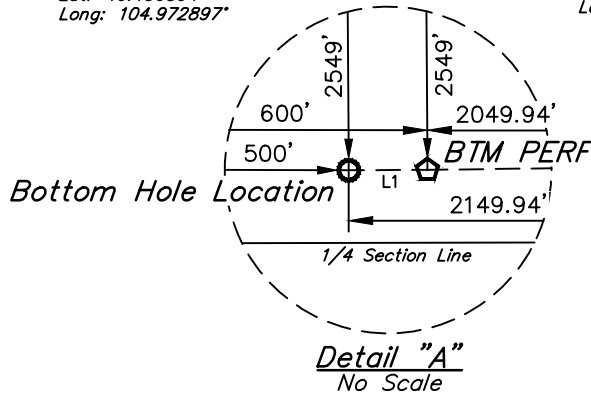
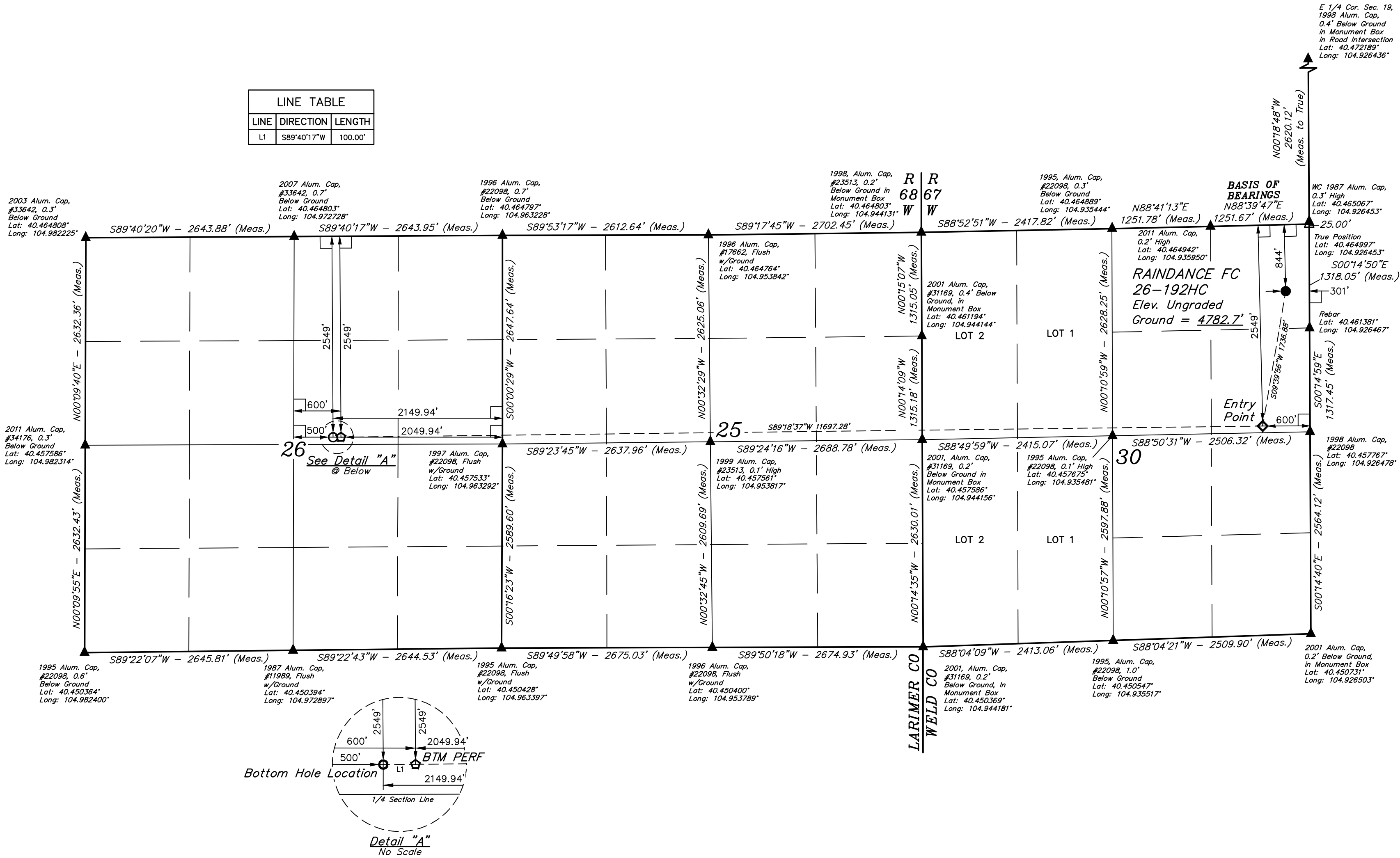
T6N, R67W, 6th P.M.

GREAT WESTERN OPERATING COMPANY
RAINDANCE FC 26-192HC
NE 1/4 NE 1/4, SECTION 30, T6N, R67W, 6th P.M.
WELD COUNTY, COLORADO

BASIS OF ELEVATION
USGS COOPERATIVE BASE NETWORK CONTROL STATION,
DESIGNATION "VERMILYEA". NGS DATA SHEET LISTS THE
NAVD 88 ELEVATION AS BEING 5026 FEET.



LINE TABLE		
LINE	DIRECTION	LENGTH
L1	S89°40'17"W	100.00'



LEGEND:

- 90° SYMBOL
- PROPOSED WELLHEAD.
- TARGET BOTTOM HOLE.
- ENTRY POINT.
- BTM PERF.
- SECTION CORNERS LOCATED. (NAD 83)
- SECTION CORNERS RE-ESTABLISHED. (Not Set on Ground.) (NAD 83)

NAD 83 (SURFACE LOCATION)	NAD 83 (ENTRY POINT)	NAD 83 (BTM PERF)	NAD 83 (BOTTOM HOLE LOCATION)
LATITUDE = 40°27'45.61" (40.462668)	LATITUDE = 40°27'28.71" (40.457976)	LATITUDE = 40°27'28.11" (40.457808)	LATITUDE = 40°27'28.11" (40.457808)
LONGITUDE = 104°55'39.15" (104.927542)	LONGITUDE = 104°55'43.08" (104.928633)	LONGITUDE = 104°58'14.35" (104.970654)	LONGITUDE = 104°58'15.65" (104.971013)
NAD 27 (SURFACE LOCATION)	NAD 27 (ENTRY POINT)	NAD 27 (BTM PERF)	NAD 27 (BOTTOM HOLE LOCATION)
LATITUDE = 40°27'45.67" (40.462686)	LATITUDE = 40°27'28.78" (40.457993)	LATITUDE = 40°27'28.17" (40.457825)	LATITUDE = 40°27'28.17" (40.457825)
LONGITUDE = 104°55'37.24" (104.927012)	LONGITUDE = 104°55'41.17" (104.928103)	LONGITUDE = 104°58'12.44" (104.970123)	LONGITUDE = 104°58'13.74" (104.970482)

PDOP = 1.5

REV: 8 03-31-21 J.J. (EP & TBH MOVE)

UINTEAH
ENGINEERING & LAND SURVEYING

SURVEYED BY CHAD MEIERS, J.C.
DRAWN BY K.B.

10-14-16
02-25-16

SCALE
1" = 1000'

WELL LOCATION PLAT

CERTIFICATE OF ACCURACY
THIS IS TO CERTIFY THAT THE ABOVE DESCRIBED SURVEY WAS MADE IN ACCORDANCE WITH THE NOTES OF ACTUAL SURVEYS MADE AND UNDER MY SUPERVISION AND THAT THE SAME ARE TRUE AND CORRECT TO THE BEST OF MY KNOWLEDGE AND BELIEF.

REGISTERED LAND SURVEYOR
REGISTRATION NO. 28285
STATE OF COLORADO
J.J. MEIERS

UELS, LLC
Corporate Office * 85 South 200 East
Vernal, UT 84078 * (435) 789-1017