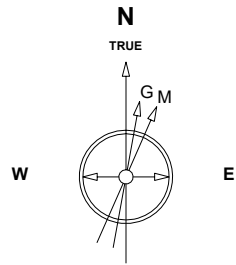


Great Western Operating Company, LLC

Location Colorado
Field Wattenburg
Installation Gus

Slot W05 - Gus LD 34-375HN
Well Gus LD 34-375HN
Wellbore Gus LD 34-375HN (PWB)

Created by mmount
Date plotted 30-Jun-2021
Plot reference is Gus LD 34-375HN (PWB).
Ref wellpath is Gus LD 34-375HN (PWP#1).
Coordinates are in Feet reference W05 - Gus LD 34-375HN.
True Vertical Depths are reference Rig Datum.
Measured Depths are reference Rig Datum.
Rig Datum: Planned Datum #1
Rig Datum to Mean Sea Level: 5144.00 ft.
Plot North is aligned to TRUE North.



Oct-22-2018
EMM-2015 Dip: 66.27 deg Field: 51954.5 nT
Lat: N39 57 11.9124 Long: W104 53 9.4056 Elev: 5124.00 ft
Magnetic North is 8.17 deg East of TRUE North
To correct azimuth from Magnetic to TRUE add 8.17 deg

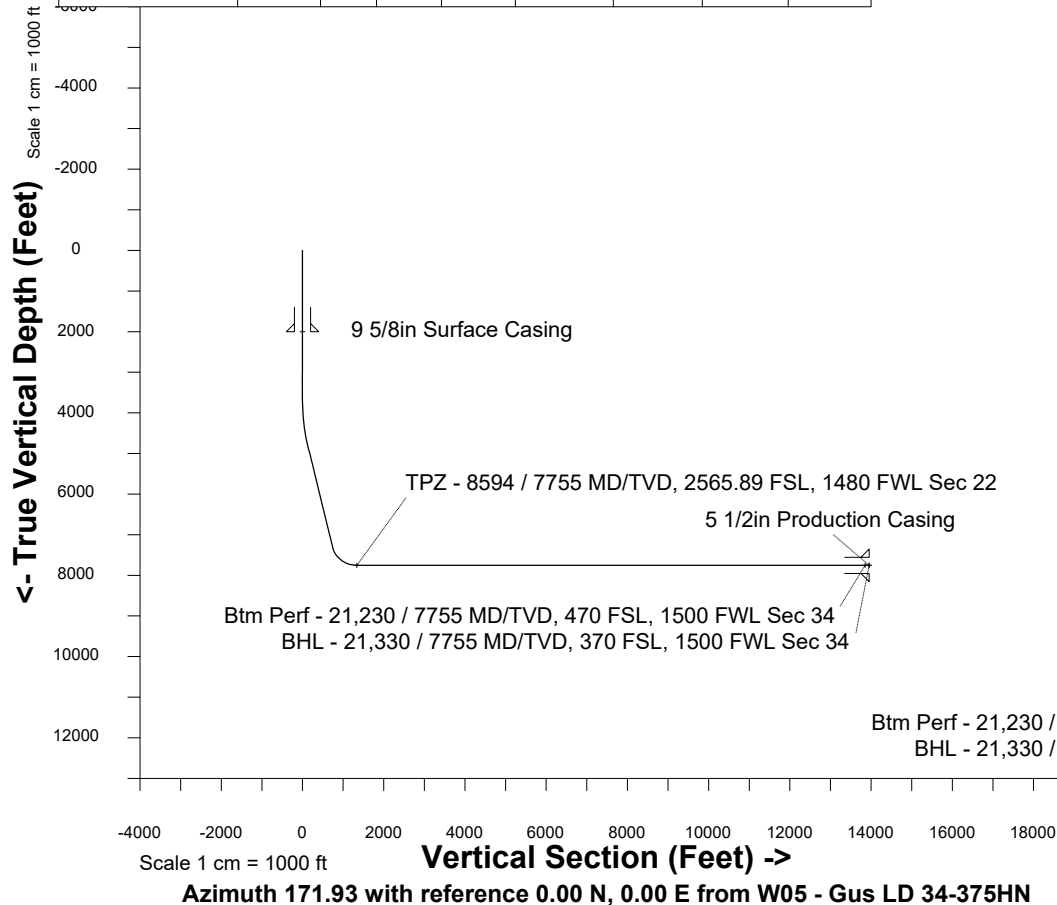
Scale 1 cm = 600 ft

East (Feet) ->

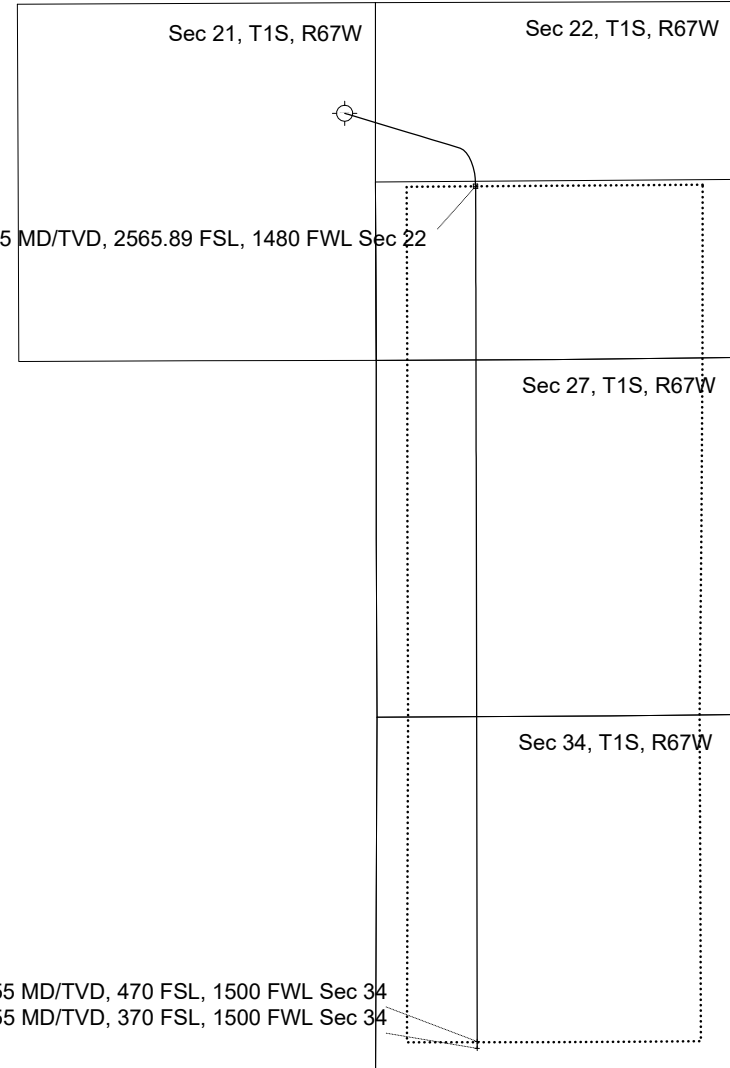
-9600 -8400 -7200 -6000 -4800 -3600 -2400 -1200 0 1200 2400 3600 4800 6000

WELL PROFILE DATA

Point	MD	Inc	Azi	TVD	North	East	deg/100ft	V. Sect
Tie on	0.00	0.00	0.00	0.00	S 0.00	W 0.00		0.00
KOP	3743.00	0.00	106.79	3743.00	S 0.00	W 0.00	0.00	0.00
End of Build	4742.93	30.00	106.79	4697.87	S 73.90	E 244.93	3.00	107.56
End of Hold	7777.63	30.00	106.79	7326.05	S 512.14	E 1697.52	0.00	745.42
Target TPZ - ...Sec 22	8594.08	90.00	179.89	7754.70	S 1078.57	E 1935.37	10.00	1339.63
Target Btm Pe...Sec 34	21229.63	90.00	179.89	7754.70	S 13714.10	E 1959.36	0.00	13853.35
End of Turn	21232.31	90.00	180.16	7754.70	S 13716.78	E 1959.36	10.00	13856.01
T.D. & Target BHL... 34	21329.81	90.00	180.16	7754.70	S 13814.28	E 1959.09	0.00	13952.50



TPZ - 8594/ 7755 MD/TVD, 2565.89 FSL, 1480 FWL Sec 22



<- North(Feet)

Scale 1 cm = 600 ft

Header Information	measured depth (ft)	inclination (°)	azimuth (°)	true vertical depth (ft)	northing +N/-S (ft)	easting +E/-W (ft)
Operator Name	100	0.00	0.00	100	0.00	0.00
Great Western Oil & Gas Company LLC	200	0.00	0.00	200	0.00	0.00
Operator Number	300	0.00	0.00	300	0.00	0.00
10110	400	0.00	0.00	400	0.00	0.00
Well Name and Number	500	0.00	0.00	500	0.00	0.00
Gus LD 34-375HN	600	0.00	0.00	600	0.00	0.00
API Number (if available)	700	0.00	0.00	700	0.00	0.00
05-001-10496	800	0.00	0.00	800	0.00	0.00
Location: QQ SEC TWP RGE	900	0.00	0.00	900	0.00	0.00
SENE 21 1S 67W	1000	0.00	0.00	1000	0.00	0.00
Citing Type: Planned or Actual	1100	0.00	0.00	1100	0.00	0.00
Planned	1200	0.00	0.00	1200	0.00	0.00
Deviation Indicator	1300	0.00	0.00	1300	0.00	0.00
Horizontal ▼	1400	0.00	0.00	1400	0.00	0.00
North Reference	1500	0.00	0.00	1500	0.00	0.00
True ▼	1600	0.00	0.00	1600	0.00	0.00
Grid Type	1700	0.00	0.00	1700	0.00	0.00
▼	1800	0.00	0.00	1800	0.00	0.00
	1900	0.00	0.00	1900	0.00	0.00
	2000	0.00	0.00	2000	0.00	0.00
	2100	0.00	0.00	2100	0.00	0.00
	2200	0.00	0.00	2200	0.00	0.00
	2300	0.00	0.00	2300	0.00	0.00
	2400	0.00	0.00	2400	0.00	0.00
	2500	0.00	0.00	2500	0.00	0.00
	2600	0.00	0.00	2600	0.00	0.00
	2700	0.00	0.00	2700	0.00	0.00
	2800	0.00	0.00	2800	0.00	0.00
	2900	0.00	0.00	2900	0.00	0.00

3000	0.00	0.00	3000	0.00	0.00
3100	0.00	0.00	3100	0.00	0.00
3200	0.00	0.00	3200	0.00	0.00
3300	0.00	0.00	3300	0.00	0.00
3400	0.00	0.00	3400	0.00	0.00
3500	0.00	0.00	3500	0.00	0.00
3600	0.00	0.00	3600	0.00	0.00
3700	0.00	0.00	3700	0.00	0.00
3800	1.71	106.79	3800	-0.25	0.81
3900	4.71	106.79	3900	-1.86	6.17
4000	7.71	106.79	3999	-4.99	16.53
4100	10.71	106.79	4098	-9.61	31.85
4200	13.71	106.79	4196	-15.72	52.10
4300	16.71	106.79	4292	-23.29	77.21
4400	19.71	106.79	4387	-32.32	107.13
4500	22.71	106.79	4480	-42.77	141.76
4600	25.71	106.79	4572	-54.61	181.01
4700	28.71	106.79	4660	-67.82	224.79
4800	30.00	106.79	4747	-82.14	272.25
4900	30.00	106.79	4834	-96.58	320.12
5000	30.00	106.79	4921	-111.02	367.98
5100	30.00	106.79	5007	-125.46	415.85
5200	30.00	106.79	5094	-139.90	463.71
5300	30.00	106.79	5180	-154.34	511.58
5400	30.00	106.79	5267	-168.79	559.45
5500	30.00	106.79	5354	-183.23	607.31
5600	30.00	106.79	5440	-197.67	655.18
5700	30.00	106.79	5527	-212.11	703.04
5800	30.00	106.79	5613	-226.55	750.91
5900	30.00	106.79	5700	-240.99	798.78
6000	30.00	106.79	5787	-255.43	846.64
6100	30.00	106.79	5873	-269.87	894.51
6200	30.00	106.79	5960	-284.31	942.37
6300	30.00	106.79	6046	-298.76	990.24

6400	30.00	106.79	6133	-313.20	1038.11
6500	30.00	106.79	6220	-327.64	1085.97
6600	30.00	106.79	6306	-342.08	1133.84
6700	30.00	106.79	6393	-356.52	1181.70
6800	30.00	106.79	6479	-370.96	1229.57
6900	30.00	106.79	6566	-385.40	1277.43
7000	30.00	106.79	6653	-399.84	1325.30
7100	30.00	106.79	6739	-414.29	1373.17
7200	30.00	106.79	6826	-428.73	1421.03
7300	30.00	106.79	6912	-443.17	1468.90
7400	30.00	106.79	6999	-457.61	1516.76
7500	30.00	106.79	7086	-472.05	1564.63
7600	30.00	106.79	7172	-486.49	1612.50
7700	30.00	106.79	7259	-500.93	1660.36
7800	30.64	111.04	7345	-515.81	1708.20
7900	34.97	127.74	7430	-542.56	1754.76
8000	41.11	140.61	7508	-585.62	1798.39
8100	48.34	150.46	7580	-643.67	1837.77
8200	56.24	158.22	7641	-714.96	1871.70
8300	64.54	164.65	7690	-797.30	1899.14
8400	73.09	170.22	7726	-888.21	1919.27
8500	81.77	175.31	7748	-984.92	1931.47
8594	90.00	179.89	7755	-1078.57	1935.37
8600	90.00	179.89	7755	-1084.49	1935.39
8700	90.00	179.89	7755	-1184.49	1935.58
8800	90.00	179.89	7755	-1284.49	1935.77
8900	90.00	179.89	7755	-1384.49	1935.96
9000	90.00	179.89	7755	-1484.49	1936.14
9100	90.00	179.89	7755	-1584.49	1936.33
9200	90.00	179.89	7755	-1684.49	1936.52
9300	90.00	179.89	7755	-1784.49	1936.71
9400	90.00	179.89	7755	-1884.49	1936.90
9500	90.00	179.89	7755	-1984.49	1937.09
9600	90.00	179.89	7755	-2084.49	1937.28

9700	90.00	179.89	7755	-2184.49	1937.47
9800	90.00	179.89	7755	-2284.49	1937.66
9900	90.00	179.89	7755	-2384.49	1937.85
10000	90.00	179.89	7755	-2484.49	1938.04
10100	90.00	179.89	7755	-2584.49	1938.23
10200	90.00	179.89	7755	-2684.49	1938.42
10300	90.00	179.89	7755	-2784.49	1938.61
10400	90.00	179.89	7755	-2884.49	1938.80
10500	90.00	179.89	7755	-2984.49	1938.99
10600	90.00	179.89	7755	-3084.49	1939.18
10700	90.00	179.89	7755	-3184.49	1939.37
10800	90.00	179.89	7755	-3284.49	1939.56
10900	90.00	179.89	7755	-3384.49	1939.75
11000	90.00	179.89	7755	-3484.49	1939.94
11100	90.00	179.89	7755	-3584.49	1940.13
11200	90.00	179.89	7755	-3684.49	1940.32
11300	90.00	179.89	7755	-3784.49	1940.51
11400	90.00	179.89	7755	-3884.49	1940.70
11500	90.00	179.89	7755	-3984.49	1940.89
11600	90.00	179.89	7755	-4084.49	1941.08
11700	90.00	179.89	7755	-4184.49	1941.27
11800	90.00	179.89	7755	-4284.49	1941.46
11900	90.00	179.89	7755	-4384.49	1941.65
12000	90.00	179.89	7755	-4484.49	1941.84
12100	90.00	179.89	7755	-4584.49	1942.03
12200	90.00	179.89	7755	-4684.49	1942.22
12300	90.00	179.89	7755	-4784.49	1942.41
12400	90.00	179.89	7755	-4884.49	1942.60
12500	90.00	179.89	7755	-4984.49	1942.79
12600	90.00	179.89	7755	-5084.49	1942.98
12700	90.00	179.89	7755	-5184.49	1943.17
12800	90.00	179.89	7755	-5284.49	1943.36
12900	90.00	179.89	7755	-5384.49	1943.55
13000	90.00	179.89	7755	-5484.49	1943.74

13100	90.00	179.89	7755	-5584.49	1943.93
13200	90.00	179.89	7755	-5684.49	1944.12
13300	90.00	179.89	7755	-5784.49	1944.31
13400	90.00	179.89	7755	-5884.49	1944.50
13500	90.00	179.89	7755	-5984.49	1944.69
13600	90.00	179.89	7755	-6084.48	1944.88
13700	90.00	179.89	7755	-6184.48	1945.07
13800	90.00	179.89	7755	-6284.48	1945.26
13900	90.00	179.89	7755	-6384.48	1945.45
14000	90.00	179.89	7755	-6484.48	1945.64
14100	90.00	179.89	7755	-6584.48	1945.83
14200	90.00	179.89	7755	-6684.48	1946.02
14300	90.00	179.89	7755	-6784.48	1946.21
14400	90.00	179.89	7755	-6884.48	1946.40
14500	90.00	179.89	7755	-6984.48	1946.59
14600	90.00	179.89	7755	-7084.48	1946.78
14700	90.00	179.89	7755	-7184.48	1946.96
14800	90.00	179.89	7755	-7284.48	1947.15
14900	90.00	179.89	7755	-7384.48	1947.34
15000	90.00	179.89	7755	-7484.48	1947.53
15100	90.00	179.89	7755	-7584.48	1947.72
15200	90.00	179.89	7755	-7684.48	1947.91
15300	90.00	179.89	7755	-7784.48	1948.10
15400	90.00	179.89	7755	-7884.48	1948.29
15500	90.00	179.89	7755	-7984.48	1948.48
15600	90.00	179.89	7755	-8084.48	1948.67
15700	90.00	179.89	7755	-8184.48	1948.86
15800	90.00	179.89	7755	-8284.48	1949.05
15900	90.00	179.89	7755	-8384.48	1949.24
16000	90.00	179.89	7755	-8484.48	1949.43
16100	90.00	179.89	7755	-8584.48	1949.62
16200	90.00	179.89	7755	-8684.48	1949.81
16300	90.00	179.89	7755	-8784.48	1950.00
16400	90.00	179.89	7755	-8884.48	1950.19

16500	90.00	179.89	7755	-8984.48	1950.38
16600	90.00	179.89	7755	-9084.48	1950.57
16700	90.00	179.89	7755	-9184.48	1950.76
16800	90.00	179.89	7755	-9284.48	1950.95
16900	90.00	179.89	7755	-9384.48	1951.14
17000	90.00	179.89	7755	-9484.48	1951.33
17100	90.00	179.89	7755	-9584.48	1951.52
17200	90.00	179.89	7755	-9684.48	1951.71
17300	90.00	179.89	7755	-9784.48	1951.90
17400	90.00	179.89	7755	-9884.48	1952.09
17500	90.00	179.89	7755	-9984.48	1952.28
17600	90.00	179.89	7755	-10084.48	1952.47
17700	90.00	179.89	7755	-10184.48	1952.66
17800	90.00	179.89	7755	-10284.48	1952.85
17900	90.00	179.89	7755	-10384.48	1953.04
18000	90.00	179.89	7755	-10484.48	1953.23
18100	90.00	179.89	7755	-10584.48	1953.42
18200	90.00	179.89	7755	-10684.48	1953.61
18300	90.00	179.89	7755	-10784.48	1953.80
18400	90.00	179.89	7755	-10884.48	1953.99
18500	90.00	179.89	7755	-10984.48	1954.18
18600	90.00	179.89	7755	-11084.48	1954.37
18700	90.00	179.89	7755	-11184.48	1954.56
18800	90.00	179.89	7755	-11284.48	1954.75
18900	90.00	179.89	7755	-11384.48	1954.94
19000	90.00	179.89	7755	-11484.48	1955.13
19100	90.00	179.89	7755	-11584.47	1955.32
19200	90.00	179.89	7755	-11684.47	1955.51
19300	90.00	179.89	7755	-11784.47	1955.70
19400	90.00	179.89	7755	-11884.47	1955.89
19500	90.00	179.89	7755	-11984.47	1956.08
19600	90.00	179.89	7755	-12084.47	1956.27
19700	90.00	179.89	7755	-12184.47	1956.46
19800	90.00	179.89	7755	-12284.47	1956.65

[illegible]

[illegible]

