

Project: Rio Blanco County, CO  
 Site: ELU J14 496 Pad  
 Well: ELU J14 FED 15D-14 496  
 Wellbore: Wellbore #1  
 Design: Design #1  
 Latitude: 39.700752  
 Longitude: -108.135816  
 Ground Level: 7902.0  
 RKB @ 7932.0usft (H&P 330)

PROJECT DETAILS: Rio Blanco County, CO  
 Geodetic System: Universal Transverse Mercator (US Survey Feet)  
 Datum: NAD 1927 - Western US  
 Ellipsoid: Clarke 1866  
 Zone: Zone 12N (114 W to 108 W)  
 System Datum: Mean Sea Level

#### REFERENCE INFORMATION

Co-ordinate (N/E) Reference: Well ELU J14 FED 15D-14 496 - Slot 15D-14, True North  
 Vertical (TVD) Reference: RKB @ 7932.0usft (H&P 330)  
 Section (VS) Reference: Slot - 15D-14(0.0N, 0.0E)  
 Measured Depth Reference: RKB @ 7932.0usft (H&P 330)  
 Calculation Method: Minimum Curvature

#### SECTION DETAILS

MD	Inc	Azi	TVD	+N-S	+E-W	Dleg	TFace	VSect	Annotation
0.0	0.00	0.00	0.0	0.0	0.0	0.00	0.00	0.0	
200.0	0.00	0.00	200.0	0.0	0.0	0.00	0.00	0.0	Build 3° / 100'
366.7	5.00	175.00	366.5	-7.2	0.6	3.00	175.00	3.6	EOB @ 5.00° Inc. / 175.00° Azm / Build 3° / 100'
976.8	20.29	235.23	961.6	-94.8	-84.7	3.00	73.40	123.7	EOB @ 20.29° Inc. / 235.23° Azm
7795.0	20.29	235.23	7356.8	-1442.8	-2026.7	0.00	0.00	2487.6	Drop 3° / 100'
8471.2	0.00	0.00	8019.0	-1510.3	-2124.0	3.00	180.00	2606.1	EOD @ Vertical / Build 1.5° / 100'
8569.1	1.47	250.00	8116.9	-1510.8	-2125.2	1.50	250.00	2607.3	EOB @ 1.47° Inc. / 250.00° Azm
12423.5	1.47	250.00	11970.0	-1544.5	-2218.0	0.00	0.00	2702.8	TD @ 12423.5' MD / 11970.0' TVD

#### DESIGN TARGET DETAILS

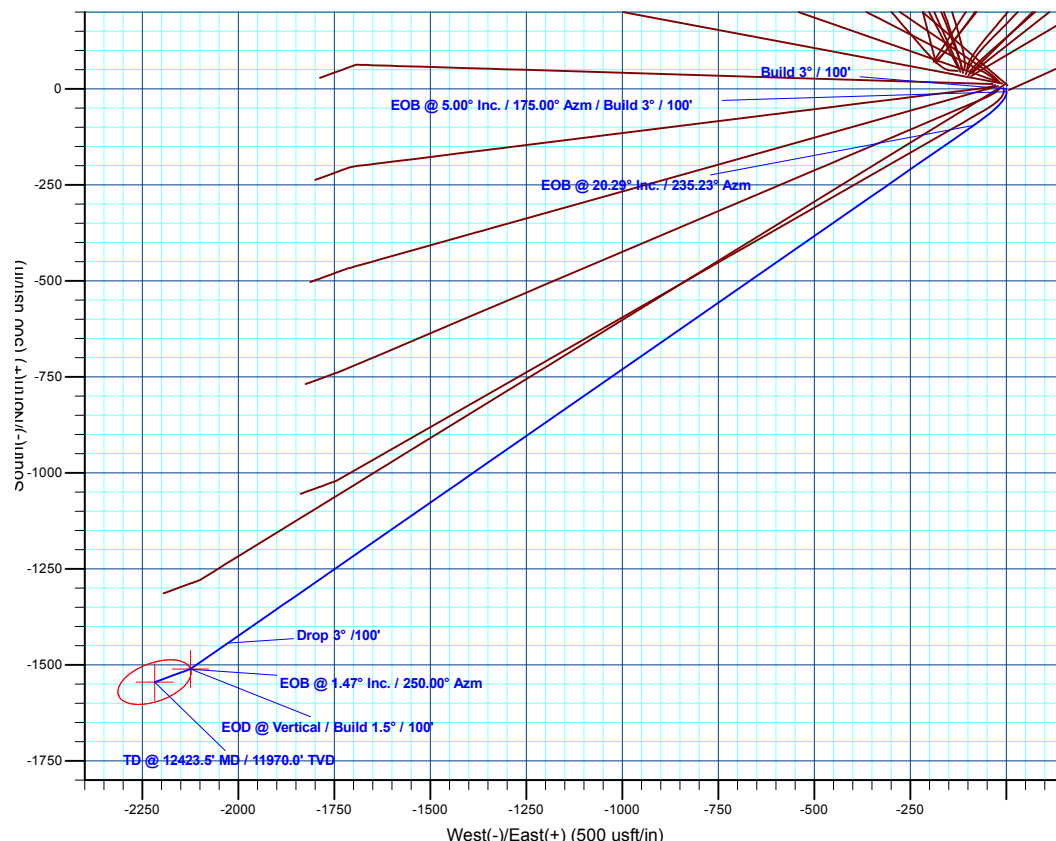
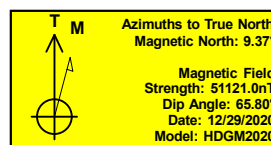
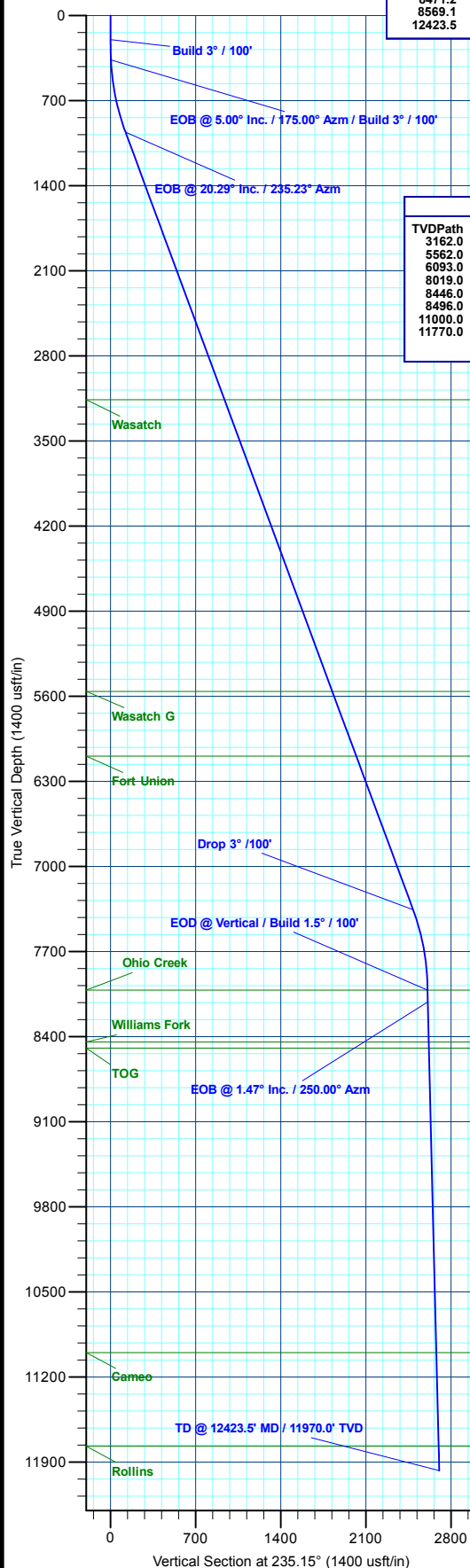
Name	TVD	+N-S	+E-W	Northing	Easting	Latitude	Longitude
15D-14 - OHCR	8019.0	-1510.3	-2124.0	14428373.09	2444033.23	39.696607	-108.143361
15D-14 - PBHL	11970.0	-1544.5	-2218.0	14428335.90	2443940.40	39.696513	-108.143695

#### FORMATION TOP DETAILS

TVDPth	MDPth	Formation
3162.0	3322.7	Wasatch
5562.0	5881.5	Wasatch G
6093.0	6447.6	Fort Union
8019.0	8471.2	Ohio Creek
8446.0	8698.3	Williams Fork
8496.0	8948.3	TOG
11000.0	11453.2	Cameo
11770.0	12223.4	Rollins

#### WELL DETAILS: ELU J14 FED 15D-14 496

+N-S	+E-W	Northing	Easting	Latitude	Longitude	15D-14
0.0	0.0	14429950.50	2446107.90	39.700752	-108.135816	



Plan: Design #1 (ELU J14 FED 15D-14 496/Wellbore #1)

Created By: Will Jircik

Date: 8:56, January 11 2021



## **Caerus Oil & Gas**

**Rio Blanco County, CO**

**ELU J14 496 Pad**

**ELU J14 FED 15D-14 496 - Slot 15D-14**

**Wellbore #1**

**Plan: Design #1**

## **QES Well Planning Report**

**08 January, 2021**



<b>Database:</b>	EDM 5000.1 Single User Db	<b>Local Co-ordinate Reference:</b>	Well ELU J14 FED 15D-14 496 - Slot 15D-14
<b>Company:</b>	Caerus Oil & Gas	<b>TVD Reference:</b>	RKB @ 7932.0usft (H&P 330)
<b>Project:</b>	Rio Blanco County, CO	<b>MD Reference:</b>	RKB @ 7932.0usft (H&P 330)
<b>Site:</b>	ELU J14 496 Pad	<b>North Reference:</b>	True
<b>Well:</b>	ELU J14 FED 15D-14 496	<b>Survey Calculation Method:</b>	Minimum Curvature
<b>Wellbore:</b>	Wellbore #1		
<b>Design:</b>	Design #1		

<b>Project</b>	Rio Blanco County, CO		
<b>Map System:</b>	Universal Transverse Mercator (US Survey Fee	<b>System Datum:</b>	Mean Sea Level
<b>Geo Datum:</b>	NAD 1927 - Western US		
<b>Map Zone:</b>	Zone 12N (114 W to 108 W)		

Site		ELU J14 496 Pad				
Site Position:		Northing:	14,429,993.30 usft	Latitude:	39.700881	
From:	Map	Easting:	2,445,979.90 usft	Longitude:	-108.136266	
Position Uncertainty:		0.0 usft	Slot Radius:	13-3/16 "	Grid Convergence:	1.83 °

Well		ELU J14 FED 15D-14 496 - Slot 15D-14				
Well Position	+N/-S	-46.9 usft	Northing:	14,429,950.50 usft	Latitude:	39.700752
	+E/-W	126.6 usft	Easting:	2,446,107.90 usft	Longitude:	-108.135816
Position Uncertainty	0.0 usft		Wellhead Elevation:		Ground Level:	7,902.0 usft

<b>Wellbore</b>	Wellbore #1				
<b>Magnetics</b>	<b>Model Name</b>	<b>Sample Date</b>	<b>Declination (°)</b>	<b>Dip Angle (°)</b>	<b>Field Strength (nT)</b>
	HDGM2020	12/29/2020	9.37	65.80	51,121.00000000

<b>Design</b>	Design #1			
<b>Audit Notes:</b>				
<b>Version:</b>	<b>Phase:</b>	PLAN	<b>Tie On Depth:</b>	0.0
<b>Vertical Section:</b>	<b>Depth From (TVD) (usft)</b>	<b>+N/-S (usft)</b>	<b>+E/-W (usft)</b>	<b>Direction (°)</b>
	0.0	0.0	0.0	235.15

<b>Plan Sections</b>										
Measured Depth (usft)	Inclination (°)	Azimuth (°)	Vertical Depth (usft)	+N/-S (usft)	+E/-W (usft)	Dogleg Rate (°/100usft)	Build Rate (°/100usft)	Turn Rate (°/100usft)	TFO (°)	Target
0.0	0.00	0.00	0.0	0.0	0.0	0.00	0.00	0.00	0.00	
200.0	0.00	0.00	200.0	0.0	0.0	0.00	0.00	0.00	0.00	
366.7	5.00	175.00	366.5	-7.2	0.6	3.00	3.00	0.00	175.00	
976.8	20.29	235.23	961.6	-94.8	-84.7	3.00	2.51	9.87	73.40	
7,795.0	20.29	235.23	7,356.8	-1,442.8	-2,026.7	0.00	0.00	0.00	0.00	
8,471.2	0.00	0.00	8,019.0	-1,510.3	-2,124.0	3.00	-3.00	0.00	180.00	15D-14 - OHCR
8,569.1	1.47	250.00	8,116.9	-1,510.8	-2,125.2	1.50	1.50	-112.40	250.00	
12,423.5	1.47	250.00	11,970.0	-1,544.5	-2,218.0	0.00	0.00	0.00	0.00	15D-14 - PBHL

<b>Database:</b>	EDM 5000.1 Single User Db	<b>Local Co-ordinate Reference:</b>	Well ELU J14 FED 15D-14 496 - Slot 15D-14
<b>Company:</b>	Caerus Oil & Gas	<b>TVD Reference:</b>	RKB @ 7932.0usft (H&P 330)
<b>Project:</b>	Rio Blanco County, CO	<b>MD Reference:</b>	RKB @ 7932.0usft (H&P 330)
<b>Site:</b>	ELU J14 496 Pad	<b>North Reference:</b>	True
<b>Well:</b>	ELU J14 FED 15D-14 496	<b>Survey Calculation Method:</b>	Minimum Curvature
<b>Wellbore:</b>	Wellbore #1		
<b>Design:</b>	Design #1		

Planned Survey									
Measured Depth (usft)	Inclination (°)	Azimuth (°)	Vertical Depth (usft)	+N/-S (usft)	+E/-W (usft)	Vertical Section (usft)	Dogleg Rate (°/100usft)	Build Rate (°/100usft)	Turn Rate (°/100usft)
0.0	0.00	0.00	0.0	0.0	0.0	0.0	0.00	0.00	0.00
100.0	0.00	0.00	100.0	0.0	0.0	0.0	0.00	0.00	0.00
<b>Build 3° / 100'</b>									
200.0	0.00	0.00	200.0	0.0	0.0	0.0	0.00	0.00	0.00
300.0	3.00	175.00	300.0	-2.6	0.2	1.3	3.00	3.00	0.00
<b>EOB @ 5.00° Inc. / 175.00° Azm / Build 3° / 100'</b>									
366.7	5.00	175.00	366.5	-7.2	0.6	3.6	3.00	3.00	0.00
400.0	5.37	185.29	399.7	-10.2	0.6	5.3	3.00	1.11	30.87
500.0	7.24	207.04	499.1	-20.5	-2.7	13.9	3.00	1.87	21.75
600.0	9.69	218.94	598.0	-32.7	-10.8	27.6	3.00	2.45	11.90
700.0	12.38	225.90	696.1	-46.7	-23.8	46.2	3.00	2.69	6.96
800.0	15.19	230.36	793.2	-62.5	-41.6	69.9	3.00	2.81	4.46
900.0	18.06	233.44	889.0	-80.1	-64.2	98.4	3.00	2.87	3.08
<b>EOB @ 20.29° Inc. / 235.23° Azm</b>									
976.8	20.29	235.23	961.6	-94.8	-84.7	123.7	3.00	2.90	2.33
1,000.0	20.29	235.23	983.3	-99.4	-91.3	131.7	0.00	0.00	0.00
1,100.0	20.29	235.23	1,077.1	-119.1	-119.8	166.4	0.00	0.00	0.00
1,200.0	20.29	235.23	1,170.9	-138.9	-148.2	201.0	0.00	0.00	0.00
1,300.0	20.29	235.23	1,264.7	-158.7	-176.7	235.7	0.00	0.00	0.00
1,400.0	20.29	235.23	1,358.5	-178.5	-205.2	270.4	0.00	0.00	0.00
1,500.0	20.29	235.23	1,452.3	-198.2	-233.7	305.0	0.00	0.00	0.00
1,600.0	20.29	235.23	1,546.1	-218.0	-262.2	339.7	0.00	0.00	0.00
1,700.0	20.29	235.23	1,639.9	-237.8	-290.7	374.4	0.00	0.00	0.00
1,800.0	20.29	235.23	1,733.7	-257.5	-319.1	409.1	0.00	0.00	0.00
1,900.0	20.29	235.23	1,827.5	-277.3	-347.6	443.7	0.00	0.00	0.00
2,000.0	20.29	235.23	1,921.3	-297.1	-376.1	478.4	0.00	0.00	0.00
2,100.0	20.29	235.23	2,015.1	-316.8	-404.6	513.1	0.00	0.00	0.00
2,200.0	20.29	235.23	2,108.9	-336.6	-433.1	547.8	0.00	0.00	0.00
2,300.0	20.29	235.23	2,202.7	-356.4	-461.6	582.4	0.00	0.00	0.00
2,400.0	20.29	235.23	2,296.5	-376.2	-490.0	617.1	0.00	0.00	0.00
2,500.0	20.29	235.23	2,390.3	-395.9	-518.5	651.8	0.00	0.00	0.00
2,600.0	20.29	235.23	2,484.1	-415.7	-547.0	686.4	0.00	0.00	0.00
2,700.0	20.29	235.23	2,577.9	-435.5	-575.5	721.1	0.00	0.00	0.00
2,800.0	20.29	235.23	2,671.7	-455.2	-604.0	755.8	0.00	0.00	0.00
2,900.0	20.29	235.23	2,765.5	-475.0	-632.4	790.5	0.00	0.00	0.00
3,000.0	20.29	235.23	2,859.3	-494.8	-660.9	825.1	0.00	0.00	0.00
3,100.0	20.29	235.23	2,953.1	-514.6	-689.4	859.8	0.00	0.00	0.00
3,200.0	20.29	235.23	3,046.9	-534.3	-717.9	894.5	0.00	0.00	0.00
3,300.0	20.29	235.23	3,140.7	-554.1	-746.4	929.1	0.00	0.00	0.00
<b>Wasatch</b>									
3,322.7	20.29	235.23	3,162.0	-558.6	-752.9	937.0	0.00	0.00	0.00
3,400.0	20.29	235.23	3,234.5	-573.9	-774.9	963.8	0.00	0.00	0.00
3,500.0	20.29	235.23	3,328.3	-593.6	-803.3	998.5	0.00	0.00	0.00
3,600.0	20.29	235.23	3,422.1	-613.4	-831.8	1,033.2	0.00	0.00	0.00
3,700.0	20.29	235.23	3,515.9	-633.2	-860.3	1,067.8	0.00	0.00	0.00
3,800.0	20.29	235.23	3,609.6	-652.9	-888.8	1,102.5	0.00	0.00	0.00
3,900.0	20.29	235.23	3,703.4	-672.7	-917.3	1,137.2	0.00	0.00	0.00
4,000.0	20.29	235.23	3,797.2	-692.5	-945.8	1,171.8	0.00	0.00	0.00
4,100.0	20.29	235.23	3,891.0	-712.3	-974.2	1,206.5	0.00	0.00	0.00
4,200.0	20.29	235.23	3,984.8	-732.0	-1,002.7	1,241.2	0.00	0.00	0.00
4,300.0	20.29	235.23	4,078.6	-751.8	-1,031.2	1,275.9	0.00	0.00	0.00
4,400.0	20.29	235.23	4,172.4	-771.6	-1,059.7	1,310.5	0.00	0.00	0.00
4,500.0	20.29	235.23	4,266.2	-791.3	-1,088.2	1,345.2	0.00	0.00	0.00
4,600.0	20.29	235.23	4,360.0	-811.1	-1,116.7	1,379.9	0.00	0.00	0.00

<b>Database:</b>	EDM 5000.1 Single User Db	<b>Local Co-ordinate Reference:</b>	Well ELU J14 FED 15D-14 496 - Slot 15D-14
<b>Company:</b>	Caerus Oil & Gas	<b>TVD Reference:</b>	RKB @ 7932.0usft (H&P 330)
<b>Project:</b>	Rio Blanco County, CO	<b>MD Reference:</b>	RKB @ 7932.0usft (H&P 330)
<b>Site:</b>	ELU J14 496 Pad	<b>North Reference:</b>	True
<b>Well:</b>	ELU J14 FED 15D-14 496	<b>Survey Calculation Method:</b>	Minimum Curvature
<b>Wellbore:</b>	Wellbore #1		
<b>Design:</b>	Design #1		

Planned Survey									
Measured Depth (usft)	Inclination (°)	Azimuth (°)	Vertical Depth (usft)	+N/-S (usft)	+E/-W (usft)	Vertical Section (usft)	Dogleg Rate (°/100usft)	Build Rate (°/100usft)	Turn Rate (°/100usft)
4,700.0	20.29	235.23	4,453.8	-830.9	-1,145.1	1,414.6	0.00	0.00	0.00
4,800.0	20.29	235.23	4,547.6	-850.7	-1,173.6	1,449.2	0.00	0.00	0.00
4,900.0	20.29	235.23	4,641.4	-870.4	-1,202.1	1,483.9	0.00	0.00	0.00
5,000.0	20.29	235.23	4,735.2	-890.2	-1,230.6	1,518.6	0.00	0.00	0.00
5,100.0	20.29	235.23	4,829.0	-910.0	-1,259.1	1,553.2	0.00	0.00	0.00
5,200.0	20.29	235.23	4,922.8	-929.7	-1,287.6	1,587.9	0.00	0.00	0.00
5,300.0	20.29	235.23	5,016.6	-949.5	-1,316.0	1,622.6	0.00	0.00	0.00
5,400.0	20.29	235.23	5,110.4	-969.3	-1,344.5	1,657.3	0.00	0.00	0.00
5,500.0	20.29	235.23	5,204.2	-989.0	-1,373.0	1,691.9	0.00	0.00	0.00
5,600.0	20.29	235.23	5,298.0	-1,008.8	-1,401.5	1,726.6	0.00	0.00	0.00
5,700.0	20.29	235.23	5,391.8	-1,028.6	-1,430.0	1,761.3	0.00	0.00	0.00
5,800.0	20.29	235.23	5,485.6	-1,048.4	-1,458.5	1,795.9	0.00	0.00	0.00
<b>Wasatch G</b>									
5,881.5	20.29	235.23	5,562.0	-1,064.5	-1,481.7	1,824.2	0.00	0.00	0.00
5,900.0	20.29	235.23	5,579.4	-1,068.1	-1,486.9	1,830.6	0.00	0.00	0.00
6,000.0	20.29	235.23	5,673.2	-1,087.9	-1,515.4	1,865.3	0.00	0.00	0.00
6,100.0	20.29	235.23	5,767.0	-1,107.7	-1,543.9	1,900.0	0.00	0.00	0.00
6,200.0	20.29	235.23	5,860.8	-1,127.4	-1,572.4	1,934.6	0.00	0.00	0.00
6,300.0	20.29	235.23	5,954.6	-1,147.2	-1,600.9	1,969.3	0.00	0.00	0.00
6,400.0	20.29	235.23	6,048.4	-1,167.0	-1,629.3	2,004.0	0.00	0.00	0.00
<b>Fort Union</b>									
6,447.6	20.29	235.23	6,093.0	-1,176.4	-1,642.9	2,020.5	0.00	0.00	0.00
6,500.0	20.29	235.23	6,142.2	-1,186.8	-1,657.8	2,038.6	0.00	0.00	0.00
6,600.0	20.29	235.23	6,236.0	-1,206.5	-1,686.3	2,073.3	0.00	0.00	0.00
6,700.0	20.29	235.23	6,329.8	-1,226.3	-1,714.8	2,108.0	0.00	0.00	0.00
6,800.0	20.29	235.23	6,423.6	-1,246.1	-1,743.3	2,142.7	0.00	0.00	0.00
6,900.0	20.29	235.23	6,517.4	-1,265.8	-1,771.8	2,177.3	0.00	0.00	0.00
7,000.0	20.29	235.23	6,611.1	-1,285.6	-1,800.2	2,212.0	0.00	0.00	0.00
7,100.0	20.29	235.23	6,704.9	-1,305.4	-1,828.7	2,246.7	0.00	0.00	0.00
7,200.0	20.29	235.23	6,798.7	-1,325.1	-1,857.2	2,281.4	0.00	0.00	0.00
7,300.0	20.29	235.23	6,892.5	-1,344.9	-1,885.7	2,316.0	0.00	0.00	0.00
7,400.0	20.29	235.23	6,986.3	-1,364.7	-1,914.2	2,350.7	0.00	0.00	0.00
7,500.0	20.29	235.23	7,080.1	-1,384.5	-1,942.7	2,385.4	0.00	0.00	0.00
7,600.0	20.29	235.23	7,173.9	-1,404.2	-1,971.1	2,420.0	0.00	0.00	0.00
7,700.0	20.29	235.23	7,267.7	-1,424.0	-1,999.6	2,454.7	0.00	0.00	0.00
<b>Drop 3° /100'</b>									
7,795.0	20.29	235.23	7,356.8	-1,442.8	-2,026.7	2,487.6	0.00	0.00	0.00
7,800.0	20.14	235.23	7,361.5	-1,443.8	-2,028.1	2,489.4	3.00	-3.00	0.00
7,900.0	17.14	235.23	7,456.3	-1,462.0	-2,054.4	2,521.3	3.00	-3.00	0.00
8,000.0	14.14	235.23	7,552.6	-1,477.4	-2,076.5	2,548.3	3.00	-3.00	0.00
8,100.0	11.14	235.23	7,650.1	-1,489.8	-2,094.5	2,570.2	3.00	-3.00	0.00
8,200.0	8.14	235.23	7,748.7	-1,499.4	-2,108.2	2,586.9	3.00	-3.00	0.00
8,300.0	5.14	235.23	7,848.0	-1,506.0	-2,117.7	2,598.4	3.00	-3.00	0.00
8,400.0	2.14	235.23	7,947.8	-1,509.6	-2,122.9	2,604.8	3.00	-3.00	0.00
<b>EOD @ Vertical / Build 1.5° / 100' - Ohio Creek</b>									
8,471.2	0.00	0.00	8,019.0	-1,510.3	-2,124.0	2,606.1	3.00	-3.00	0.00
8,500.0	0.43	250.00	8,047.8	-1,510.4	-2,124.1	2,606.2	1.50	1.50	0.00
<b>EOB @ 1.47° Inc. / 250.00° Azm</b>									
8,569.1	1.47	250.00	8,116.9	-1,510.8	-2,125.2	2,607.3	1.50	1.50	0.00
8,600.0	1.47	250.00	8,147.8	-1,511.0	-2,125.9	2,608.1	0.00	0.00	0.00
8,700.0	1.47	250.00	8,247.7	-1,511.9	-2,128.3	2,610.6	0.00	0.00	0.00
8,800.0	1.47	250.00	8,347.7	-1,512.8	-2,130.7	2,613.0	0.00	0.00	0.00
<b>Williams Fork</b>									

<b>Database:</b>	EDM 5000.1 Single User Db	<b>Local Co-ordinate Reference:</b>	Well ELU J14 FED 15D-14 496 - Slot 15D-14
<b>Company:</b>	Caerus Oil & Gas	<b>TVD Reference:</b>	RKB @ 7932.0usft (H&P 330)
<b>Project:</b>	Rio Blanco County, CO	<b>MD Reference:</b>	RKB @ 7932.0usft (H&P 330)
<b>Site:</b>	ELU J14 496 Pad	<b>North Reference:</b>	True
<b>Well:</b>	ELU J14 FED 15D-14 496	<b>Survey Calculation Method:</b>	Minimum Curvature
<b>Wellbore:</b>	Wellbore #1		
<b>Design:</b>	Design #1		

Planned Survey									
Measured Depth (usft)	Inclination (°)	Azimuth (°)	Vertical Depth (usft)	+N/-S (usft)	+E/-W (usft)	Vertical Section (usft)	Dogleg Rate (°/100usft)	Build Rate (°/100usft)	Turn Rate (°/100usft)
8,898.3	1.47	250.00	8,446.0	-1,513.6	-2,133.1	2,615.5	0.00	0.00	0.00
8,900.0	1.47	250.00	8,447.7	-1,513.7	-2,133.1	2,615.5	0.00	0.00	0.00
<b>TOG</b>									
8,948.3	1.47	250.00	8,496.0	-1,514.1	-2,134.3	2,616.7	0.00	0.00	0.00
9,000.0	1.47	250.00	8,547.6	-1,514.5	-2,135.6	2,618.0	0.00	0.00	0.00
9,100.0	1.47	250.00	8,647.6	-1,515.4	-2,138.0	2,620.5	0.00	0.00	0.00
9,200.0	1.47	250.00	8,747.6	-1,516.3	-2,140.4	2,622.9	0.00	0.00	0.00
9,300.0	1.47	250.00	8,847.5	-1,517.2	-2,142.8	2,625.4	0.00	0.00	0.00
9,400.0	1.47	250.00	8,947.5	-1,518.0	-2,145.2	2,627.9	0.00	0.00	0.00
9,500.0	1.47	250.00	9,047.5	-1,518.9	-2,147.6	2,630.4	0.00	0.00	0.00
9,600.0	1.47	250.00	9,147.4	-1,519.8	-2,150.0	2,632.9	0.00	0.00	0.00
9,700.0	1.47	250.00	9,247.4	-1,520.7	-2,152.4	2,635.3	0.00	0.00	0.00
9,800.0	1.47	250.00	9,347.4	-1,521.5	-2,154.8	2,637.8	0.00	0.00	0.00
9,900.0	1.47	250.00	9,447.3	-1,522.4	-2,157.2	2,640.3	0.00	0.00	0.00
10,000.0	1.47	250.00	9,547.3	-1,523.3	-2,159.6	2,642.8	0.00	0.00	0.00
10,100.0	1.47	250.00	9,647.3	-1,524.2	-2,162.0	2,645.2	0.00	0.00	0.00
10,200.0	1.47	250.00	9,747.2	-1,525.1	-2,164.4	2,647.7	0.00	0.00	0.00
10,300.0	1.47	250.00	9,847.2	-1,525.9	-2,166.9	2,650.2	0.00	0.00	0.00
10,400.0	1.47	250.00	9,947.2	-1,526.8	-2,169.3	2,652.7	0.00	0.00	0.00
10,500.0	1.47	250.00	10,047.1	-1,527.7	-2,171.7	2,655.1	0.00	0.00	0.00
10,600.0	1.47	250.00	10,147.1	-1,528.6	-2,174.1	2,657.6	0.00	0.00	0.00
10,700.0	1.47	250.00	10,247.1	-1,529.4	-2,176.5	2,660.1	0.00	0.00	0.00
10,800.0	1.47	250.00	10,347.0	-1,530.3	-2,178.9	2,662.6	0.00	0.00	0.00
10,900.0	1.47	250.00	10,447.0	-1,531.2	-2,181.3	2,665.0	0.00	0.00	0.00
11,000.0	1.47	250.00	10,547.0	-1,532.1	-2,183.7	2,667.5	0.00	0.00	0.00
11,100.0	1.47	250.00	10,647.0	-1,532.9	-2,186.1	2,670.0	0.00	0.00	0.00
11,200.0	1.47	250.00	10,746.9	-1,533.8	-2,188.5	2,672.5	0.00	0.00	0.00
11,300.0	1.47	250.00	10,846.9	-1,534.7	-2,190.9	2,675.0	0.00	0.00	0.00
11,400.0	1.47	250.00	10,946.9	-1,535.6	-2,193.3	2,677.4	0.00	0.00	0.00
<b>Cameo</b>									
11,453.2	1.47	250.00	11,000.0	-1,536.0	-2,194.6	2,678.7	0.00	0.00	0.00
11,500.0	1.47	250.00	11,046.8	-1,536.4	-2,195.7	2,679.9	0.00	0.00	0.00
11,600.0	1.47	250.00	11,146.8	-1,537.3	-2,198.1	2,682.4	0.00	0.00	0.00
11,700.0	1.47	250.00	11,246.8	-1,538.2	-2,200.6	2,684.9	0.00	0.00	0.00
11,800.0	1.47	250.00	11,346.7	-1,539.1	-2,203.0	2,687.3	0.00	0.00	0.00
11,900.0	1.47	250.00	11,446.7	-1,539.9	-2,205.4	2,689.8	0.00	0.00	0.00
12,000.0	1.47	250.00	11,546.7	-1,540.8	-2,207.8	2,692.3	0.00	0.00	0.00
12,100.0	1.47	250.00	11,646.6	-1,541.7	-2,210.2	2,694.8	0.00	0.00	0.00
12,200.0	1.47	250.00	11,746.6	-1,542.6	-2,212.6	2,697.2	0.00	0.00	0.00
<b>Rollins</b>									
12,223.4	1.47	250.00	11,770.0	-1,542.8	-2,213.2	2,697.8	0.00	0.00	0.00
12,300.0	1.47	250.00	11,846.6	-1,543.5	-2,215.0	2,699.7	0.00	0.00	0.00
12,400.0	1.47	250.00	11,946.5	-1,544.3	-2,217.4	2,702.2	0.00	0.00	0.00
<b>TD @ 12423.5' MD / 11970.0' TVD</b>									
12,423.5	1.47	250.00	11,970.0	-1,544.5	-2,218.0	2,702.8	0.00	0.00	0.00

<b>Database:</b>	EDM 5000.1 Single User Db	<b>Local Co-ordinate Reference:</b>	Well ELU J14 FED 15D-14 496 - Slot 15D-14
<b>Company:</b>	Caerus Oil & Gas	<b>TVD Reference:</b>	RKB @ 7932.0usft (H&P 330)
<b>Project:</b>	Rio Blanco County, CO	<b>MD Reference:</b>	RKB @ 7932.0usft (H&P 330)
<b>Site:</b>	ELU J14 496 Pad	<b>North Reference:</b>	True
<b>Well:</b>	ELU J14 FED 15D-14 496	<b>Survey Calculation Method:</b>	Minimum Curvature
<b>Wellbore:</b>	Wellbore #1		
<b>Design:</b>	Design #1		

Design Targets									
Target Name									
- hit/miss target	Dip Angle	Dip Dir.	TVD	+N/-S	+E/-W	Northing	Easting	Latitude	Longitude
- Shape	(°)	(°)	(usft)	(usft)	(usft)	(usft)	(usft)		
15D-14 - OHCR	0.00	0.00	8,019.0	-1,510.3	-2,124.0	14,428,373.09	2,444,033.23	39.696607	-108.143362
- plan hits target center									
- Point									
15D-14 - PBHL	0.00	0.00	11,970.0	-1,544.5	-2,218.0	14,428,335.90	2,443,940.40	39.696513	-108.143696
- plan hits target center									
- Ellipse (radii L100.0 W50.0 on 250.00 azi)									

Formations						
Measured Depth (usft)	Vertical Depth (usft)	Name	Lithology	Dip (°)	Dip Direction (°)	
3,322.7	3,162.0	Wasatch				
5,881.5	5,562.0	Wasatch G				
6,447.6	6,093.0	Fort Union				
8,471.2	8,019.0	Ohio Creek				
8,898.3	8,446.0	Williams Fork				
8,948.3	8,496.0	TOG				
11,453.2	11,000.0	Cameo				
12,223.4	11,770.0	Rollins				

Plan Annotations				
Measured Depth (usft)	Vertical Depth (usft)	Local Coordinates		Comment
		+N/-S (usft)	+E/-W (usft)	
200.0	200.0	0.0	0.0	Build 3° / 100'
366.7	366.5	-7.2	0.6	EOB @ 5.00° Inc. / 175.00° Azm / Build 3° / 100'
976.8	961.6	-94.8	-84.7	EOB @ 20.29° Inc. / 235.23° Azm
7,795.0	7,356.8	-1,442.8	-2,026.7	Drop 3° / 100'
8,471.2	8,019.0	-1,510.3	-2,124.0	EOD @ Vertical / Build 1.5° / 100'
8,569.1	8,116.9	-1,510.8	-2,125.2	EOB @ 1.47° Inc. / 250.00° Azm
12,423.5	11,970.0	-1,544.5	-2,218.0	TD @ 12423.5' MD / 11970.0' TVD