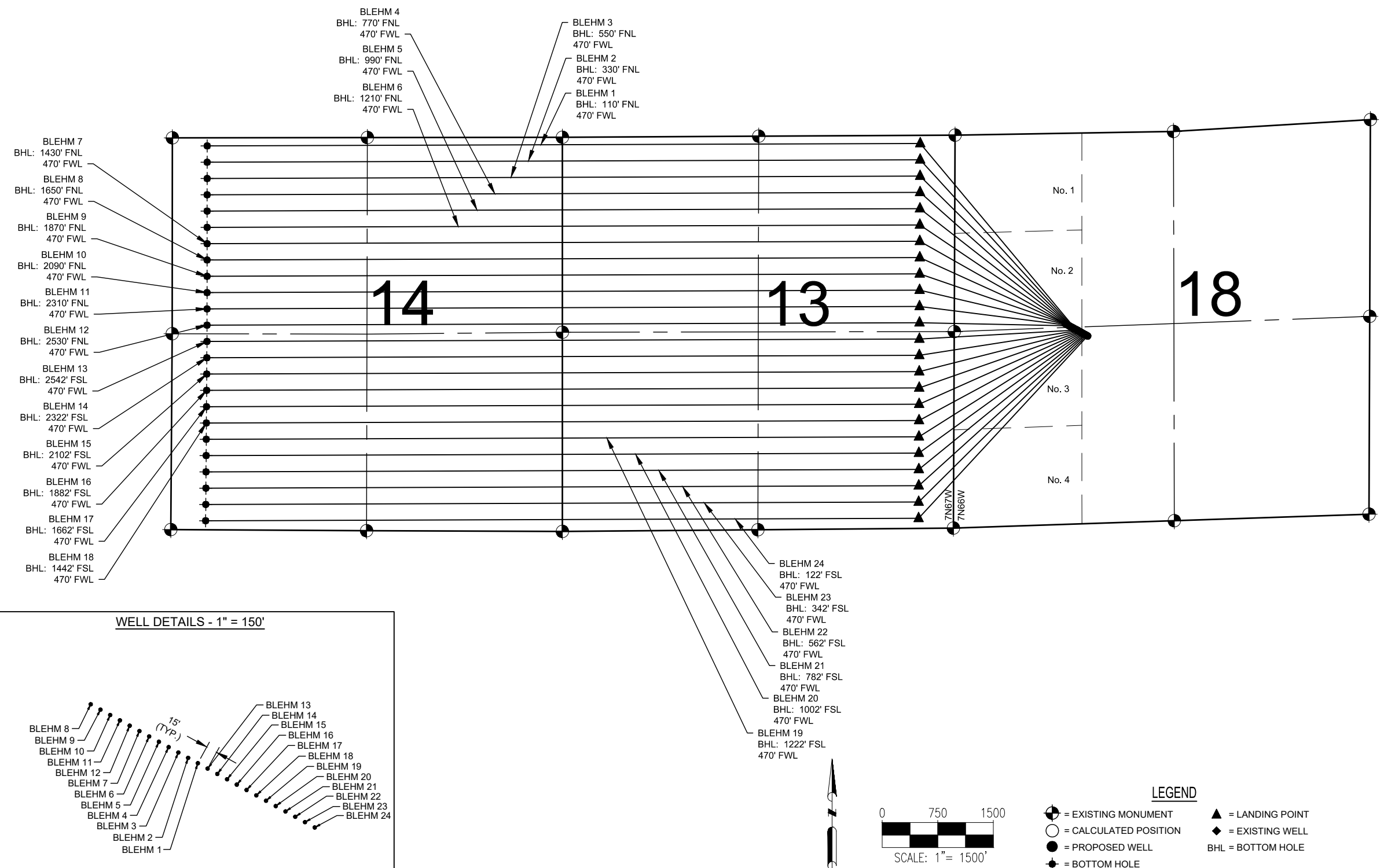


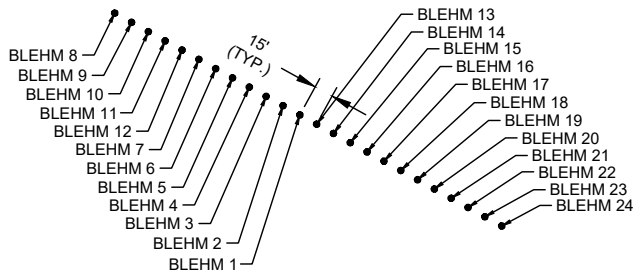
BLEHM 18-I PAD
DIRECTIONAL WELL PLAT



- NOTES:
1. THIS FIELD SURVEY CONFORMS TO THE MINIMUM STANDARDS SET BY THE COGCC, RULE NO. 215
 2. ALL DISTANCES AND BEARINGS SHOWN HEREON ARE GROUND VALUES AS GPS MEASURED IN THE FIELD, WITH TIES TO WELLS MEASURED PERPENDICULAR TO LINES SHOWN HEREON. THIS LOW DISTORTION PROJECTION (LDP) IS BASED ON THE NORTH AMERICAN DATUM OF 1983, U.S. SURVEY FOOT WITH A LATITUDE ORIGIN OF 40.567905°N, A CENTRAL MERIDIAN LONGITUDE OF 104.773473°W, AND A SCALE FACTOR ON THE CENTRAL MERIDIAN OF 1.000235 (EXACT). THE LDP BASIS OF BEARINGS IS GEODETIC NORTH.
 3. FIELD VERIFICATION OF MONUMENTS COMPLETED WITHIN 1 YEAR OF SIGNATURE DATE, UNLESS OTHERWISE NOTED.

- NOTES:
- BLEHM 1 TO BE AT 2623' FSL & 1642' FWL.
BOTTOM HOLE AT 110' FNL & 470' FWL, SEC. 14, T7N, R67W.
- BLEHM 2 TO BE AT 2631' FSL & 1629' FWL.
BOTTOM HOLE AT 330' FNL & 470' FWL, SEC. 14, T7N, R67W.
- BLEHM 3 TO BE AT 2639' FSL & 1616' FWL.
BOTTOM HOLE AT 550' FNL & 470' FWL, SEC. 14, T7N, R67W.
- BLEHM 4 TO BE AT 2646' FSL & 1603' FWL.
BOTTOM HOLE AT 770' FNL & 470' FWL, SEC. 14, T7N, R67W.
- BLEHM 5 TO BE AT 2654' FSL & 1590' FWL.
BOTTOM HOLE AT 990' FNL & 470' FWL, SEC. 14, T7N, R67W.
- BLEHM 6 TO BE AT 2615' FNL & 1577' FWL.
BOTTOM HOLE AT 1210' FNL & 470' FWL, SEC. 14, T7N, R67W.
- BLEHM 7 TO BE AT 2607' FNL & 1563' FWL.
BOTTOM HOLE AT 1430' FNL & 470' FWL, SEC. 14, T7N, R67W.
- BLEHM 8 TO BE AT 2570' FNL & 1498' FWL.
BOTTOM HOLE AT 1650' FNL & 470' FWL, SEC. 14, T7N, R67W.
- BLEHM 9 TO BE AT 2577' FNL & 1511' FWL.
BOTTOM HOLE AT 1870' FNL & 470' FWL, SEC. 14, T7N, R67W.
- BLEHM 10 TO BE AT 2585' FNL & 1524' FWL.
BOTTOM HOLE AT 2090' FNL & 470' FWL, SEC. 14, T7N, R67W.
- BLEHM 11 TO BE AT 2592' FNL & 1537' FWL.
BOTTOM HOLE AT 2310' FNL & 470' FWL, SEC. 14, T7N, R67W.
- BLEHM 12 TO BE AT 2600' FNL & 1550' FWL.
BOTTOM HOLE AT 2530' FNL & 470' FWL, SEC. 14, T7N, R67W.
- BLEHM 13 TO BE AT 2616' FSL & 1656' FWL.
BOTTOM HOLE AT 2542' FSL & 470' FWL, SEC. 14, T7N, R67W.
- BLEHM 14 TO BE AT 2608' FSL & 1669' FWL.
BOTTOM HOLE AT 2322' FSL & 470' FWL, SEC. 14, T7N, R67W.
- BLEHM 15 TO BE AT 2600' FSL & 1682' FWL.
BOTTOM HOLE AT 2102' FSL & 470' FWL, SEC. 14, T7N, R67W.
- BLEHM 16 TO BE AT 2593' FSL & 1695' FWL.
BOTTOM HOLE AT 1882' FSL & 470' FWL, SEC. 14, T7N, R67W.
- BLEHM 17 TO BE AT 2585' FSL & 1708' FWL.
BOTTOM HOLE AT 1662' FSL & 470' FWL, SEC. 14, T7N, R67W.
- BLEHM 18 TO BE AT 2577' FSL & 1721' FWL.
BOTTOM HOLE AT 1442' FSL & 470' FWL, SEC. 14, T7N, R67W.
- BLEHM 19 TO BE AT 2570' FSL & 1735' FWL.
BOTTOM HOLE AT 1222' FSL & 470' FWL, SEC. 14, T7N, R67W.
- BLEHM 20 TO BE AT 2562' FSL & 1748' FWL.
BOTTOM HOLE AT 1002' FSL & 470' FWL, SEC. 14, T7N, R67W.
- BLEHM 21 TO BE AT 2554' FSL & 1761' FWL.
BOTTOM HOLE AT 782' FSL & 470' FWL, SEC. 14, T7N, R67W.
- BLEHM 22 TO BE AT 2547' FSL & 1774' FWL.
BOTTOM HOLE AT 562' FSL & 470' FWL, SEC. 14, T7N, R67W.
- BLEHM 23 TO BE AT 2539' FSL & 1787' FWL.
BOTTOM HOLE AT 342' FSL & 470' FWL, SEC. 14, T7N, R67W.
- BLEHM 24 TO BE AT 2531' FSL & 1801' FWL.
BOTTOM HOLE AT 122' FSL & 470' FWL, SEC. 14, T7N, R67W.

WELL DETAILS - 1" = 150'



FIELD DATE:
02-20-20

DRAWING DATE:
04-26-21

BY:
CSG

CHECKED:
JG

WELL NAME:
BLEHM 18-I PAD

SURFACE LOCATION:
LOT 3 SEC. 18, T7N, R66W, 6TH P.M.
WELD COUNTY, COLORADO

PREPARED FOR:

BAYSWATER
EXPLORATION AND PRODUCTION, LLC