

Stormwater Inspection

July 8, 2021

Operator: COLORADO INTERSTATE GAS COMPANY LLC- 18600

Facility ID: 120785

Inspection Document #: 697503055

Weld County, CO

SWNE Section 5 T11N R66W

Chris Binschus
Reclamation Specialist, COGCC



COLORADO
Oil & Gas Conservation
Commission

Department of Natural Resources

Inspection Photos
Facility Name: Cheyenne Compressor Station
Facility ID: 120785



Photo 1. Google Earth aerial imagery illustrates the area of interest regarding stormwater erosion coming off the Cheyenne Compressor Station, which is impacting other down gradient surface owners. Photo 2 is a zoomed in (red box) aerial of the specific reach of stormwater erosion taken in 2019 and Photo 3 was taken in 1999.

Inspection Photos
Facility Name: Cheyenne Compressor Station
Facility ID: 120785

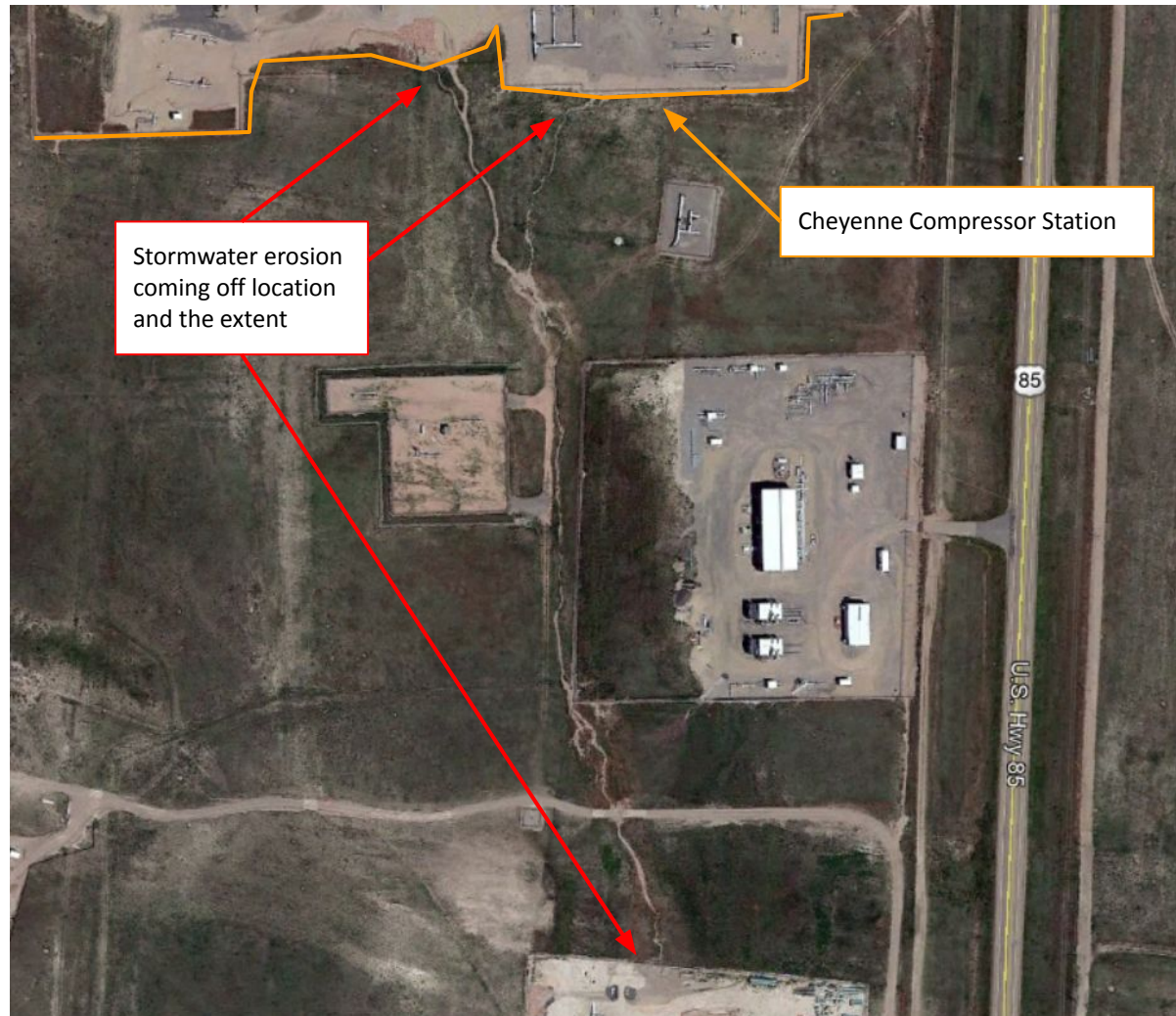


Photo 2. Zoomed in aerial imagery from 2019 illustrates stormwater erosion coming off the Cheyenne Compressor Station which is causing gully erosion off location and impacting downgradient surface owners.

Inspection Photos
Facility Name: Cheyenne Compressor Station
Facility ID: 120785



Photo 3. Zoomed in aerial imagery from 1999 illustrates there may have been a natural swale, but there was no incised channel. Overtime, due to stormwater runoff from the Cheyenne Compressor Station, it has caused gully erosion along the natural swale.

Inspection Photos
Facility Name: Cheyenne Compressor Station
Facility ID: 120785



Photo 4. Photo taken from the southern Cheyenne Compressor Station, facing North. Photo illustrates unmanaged stormwater erosion coming off the location going around some adjacent rip-rap.

Inspection Photos
Facility Name: Cheyenne Compressor Station
Facility ID: 120785



Photo 5. Photo taken from the southern Cheyenne Compressor Station, facing West. Photo illustrates unmanaged stormwater erosion coming off the location and causing gully erosion.

Inspection Photos
Facility Name: Cheyenne Compressor Station
Facility ID: 120785



Photo 6. Photo taken south of the Cheyenne Compressor Station, facing North. Photo illustrates the stormwater erosion impacts coming off the location and causing gully erosion.



COLORADO
Oil & Gas Conservation
Commission
Department of Natural Resources

Inspection Number: 697503055

Inspection Photos
Facility Name: Cheyenne Compressor Station
Facility ID: 120785



Photo 7. Photo taken south of the Cheyenne Compressor Station, facing North. See comments under Photo 6.

Inspection Photos
Facility Name: Cheyenne Compressor Station
Facility ID: 120785



Photo 8. Photo taken from the southern property boundary of the Cheyenne Compressor Station, facing South. Photo illustrates the stormwater erosion impacts coming off the location and causing gully erosion and impacting the downgradient surface owners. This portion of the reach is a safety hazard for cattle operations and exposed buried lines from the adjacent facilities.

Inspection Photos
Facility Name: Cheyenne Compressor Station
Facility ID: 120785



Photo 9. Photo taken from the southern property boundary of the Cheyenne Compressor Station, facing North. See comments under Photo 8.

Inspection Photos
Facility Name: Cheyenne Compressor Station
Facility ID: 120785



Photo 10. Photo taken from the southern reach of the stormwater erosion, facing South. Photo illustrates impacts to recent stormwater and reclamation work that has been impacted by unmanaged stormwater runoff from the Cheyenne Compressor Station.