

Project: Rio Blanco County, CO  
 Site: ELU J14 496 Pad  
 Well: ELU J14 FED 15A-14 496  
 Wellbore: Wellbore #1  
 Design: Design #1  
 Latitude: 39.700766  
 Longitude: -108.135866  
 Ground Level: 7902.0  
 RKB @ 7932.0usft (H&P 330)

PROJECT DETAILS: Rio Blanco County, CO  
 Geodetic System: Universal Transverse Mercator (US Survey Feet)  
 Datum: NAD 1927 - Western US  
 Ellipsoid: Clarke 1866  
 Zone: Zone 12N (114 W to 108 W)  
 System Datum: Mean Sea Level

REFERENCE INFORMATION  
 Co-ordinate (N/E) Reference: Well ELU J14 FED 15A-14 496 - Slot 15A-14, True North  
 Vertical (TVD) Reference: RKB @ 7932.0usft (H&P 330)  
 Section (VS) Reference: Slot - 15A-14(0.0N, 0.0E)  
 Measured Depth Reference: RKB @ 7932.0usft (H&P 330)  
 Calculation Method: Minimum Curvature

#### SECTION DETAILS

MD	Inc	Azi	TVD	+N/-S	+E/-W	Dleg	TFace	VSect	Annotation
0.0	0.00	0.00	0.0	0.0	0.0	0.00	0.00	0.0	
200.0	0.00	0.00	200.0	0.0	0.0	0.00	0.00	0.0	Build 3° / 100'
366.7	5.00	220.00	366.5	-5.6	-4.7	3.00	220.00	6.5	EOB @ 5.00° Inc. / 220.00° Azm / Build 3° / 100'
700.1	14.20	247.00	695.0	-32.7	-51.8	3.00	39.89	60.5	EOB @ 14.20° Inc. / 247.00° Azm
7833.6	14.20	247.00	7610.4	-716.5	-1662.8	0.00	0.00	1810.6	Drop 3° / 100'
8307.0	0.00	0.00	8079.0	-739.4	-1716.6	3.00	180.00	1869.0	EOD @ Vertical / Build 1.5° / 100'
8404.8	1.47	250.00	8176.8	-739.8	-1717.7	1.50	250.00	1870.3	EOB @ 1.47° Inc. / 250.00° Azm
12261.2	1.47	250.00	12032.0	-773.6	-1810.5	0.00	0.00	1968.9	TD @ 12261.2' MD / 12032.0' TVD

#### DESIGN TARGET DETAILS

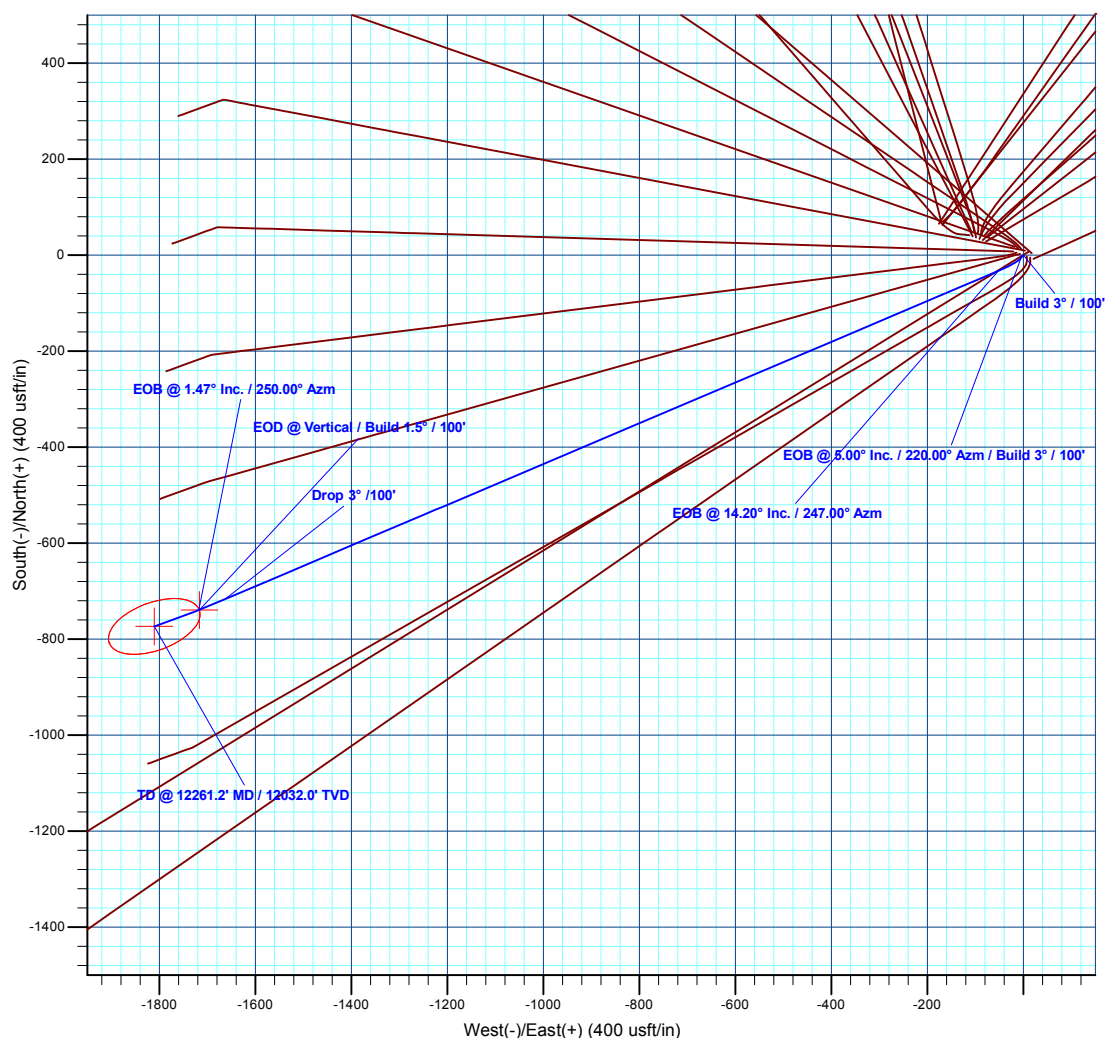
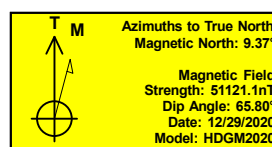
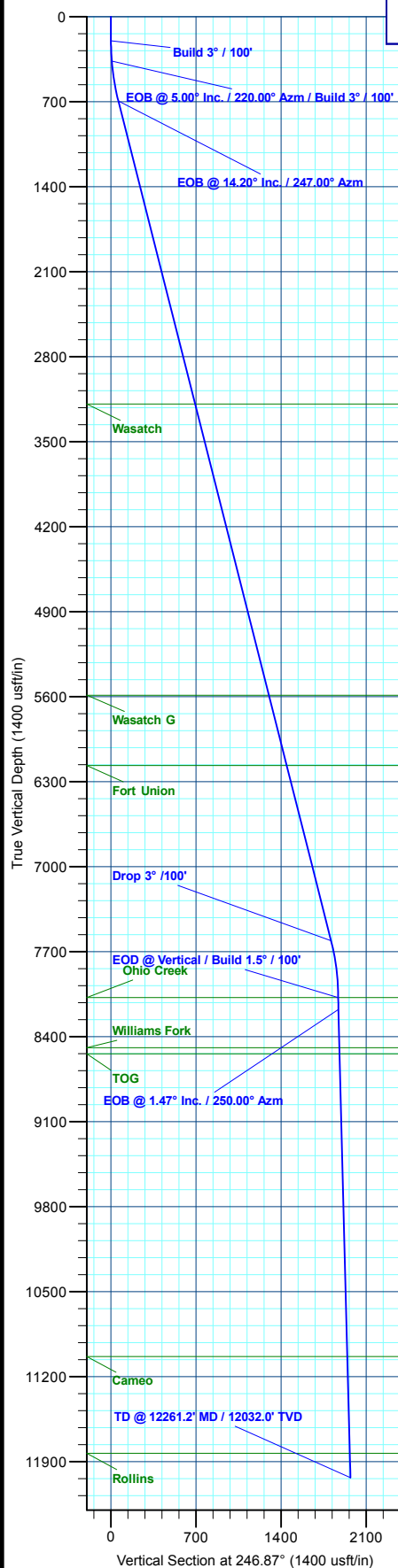
Name	TVD	+N/-S	+E/-W	Northing	Easting	Latitude	Longitude
15A-14 - OHCR	8079.0	-739.4	-1716.6	14429161.39	2444401.63	39.698737	-108.141964
15A-14 - PBHL	12032.0	-773.6	-1810.5	14429124.20	2444308.80	39.698643	-108.142298

#### FORMATION TOP DETAILS

TVDPATH	MDPATH	Formation
3190.0	3273.8	Wasatch
5590.0	5749.4	Wasatch G
6168.0	6345.7	Fort Union
8079.0	8307.0	Ohio Creek
8492.0	8720.1	Williams Fork
8542.0	8770.1	TOG
11036.0	11264.9	Cameo
11832.0	12061.2	Rollins

#### WELL DETAILS: ELU J14 FED 15A-14 496

+N/-S	+E/-W	Northing	7902.0 Easting	Latitude	Longitude
0.0	0.0	14429955.20	2446093.70	39.700766	-108.135866



Plan: Design #1 (ELU J14 FED 15A-14 496/Wellbore #1)

Created By: Will Jircik

Date: 8:44, January 11 2021



## **Caerus Oil & Gas**

**Rio Blanco County, CO**

**ELU J14 496 Pad**

**ELU J14 FED 15A-14 496 - Slot 15A-14**

**Wellbore #1**

**Plan: Design #1**

## **QES Well Planning Report**

**08 January, 2021**



<b>Database:</b>	EDM 5000.1 Single User Db	<b>Local Co-ordinate Reference:</b>	Well ELU J14 FED 15A-14 496 - Slot 15A-14
<b>Company:</b>	Caerus Oil & Gas	<b>TVD Reference:</b>	RKB @ 7932.0usft (H&P 330)
<b>Project:</b>	Rio Blanco County, CO	<b>MD Reference:</b>	RKB @ 7932.0usft (H&P 330)
<b>Site:</b>	ELU J14 496 Pad	<b>North Reference:</b>	True
<b>Well:</b>	ELU J14 FED 15A-14 496	<b>Survey Calculation Method:</b>	Minimum Curvature
<b>Wellbore:</b>	Wellbore #1		
<b>Design:</b>	Design #1		

<b>Project</b>	Rio Blanco County, CO		
<b>Map System:</b>	Universal Transverse Mercator (US Survey Fee	<b>System Datum:</b>	Mean Sea Level
<b>Geo Datum:</b>	NAD 1927 - Western US		
<b>Map Zone:</b>	Zone 12N (114 W to 108 W)		

Site		ELU J14 496 Pad			
Site Position:		Northing:	14,429,993.30 usft	Latitude:	39.700881
From:	Map	Easting:	2,445,979.90 usft	Longitude:	-108.136266
Position Uncertainty:	0.0 usft	Slot Radius:	13-3/16 "	Grid Convergence:	1.83 °

Well	ELU J14 FED 15A-14 496 - Slot 15A-14					
Well Position	+N/-S	-41.7 usft	Northing:	14,429,955.20 usft	Latitude:	39.700766
	+E/-W	112.5 usft	Easting:	2,446,093.70 usft	Longitude:	-108.135866
Position Uncertainty	0.0 usft		Wellhead Elevation:		Ground Level:	7,902.0 usft

<b>Wellbore</b>	Wellbore #1				
<b>Magnetics</b>	<b>Model Name</b>	<b>Sample Date</b>	<b>Declination (°)</b>	<b>Dip Angle (°)</b>	<b>Field Strength (nT)</b>
	HDGM2020	12/29/2020	9.37	65.80	51,121.10000000

<b>Design</b>	Design #1			
<b>Audit Notes:</b>				
<b>Version:</b>	<b>Phase:</b>	PLAN	<b>Tie On Depth:</b>	0.0
<b>Vertical Section:</b>	<b>Depth From (TVD) (usft)</b>	<b>+N/-S (usft)</b>	<b>+E/-W (usft)</b>	<b>Direction (°)</b>
	0.0	0.0	0.0	246.87

<b>Plan Sections</b>										
Measured Depth (usft)	Inclination (°)	Azimuth (°)	Vertical Depth (usft)	+N/-S (usft)	+E/-W (usft)	Dogleg Rate (°/100usft)	Build Rate (°/100usft)	Turn Rate (°/100usft)	TFO (°)	Target
0.0	0.00	0.00	0.0	0.0	0.0	0.00	0.00	0.00	0.00	
200.0	0.00	0.00	200.0	0.0	0.0	0.00	0.00	0.00	0.00	
366.7	5.00	220.00	366.5	-5.6	-4.7	3.00	3.00	0.00	220.00	
700.1	14.20	247.00	695.0	-32.7	-51.8	3.00	2.76	8.10	39.89	
7,833.6	14.20	247.00	7,610.4	-716.5	-1,662.8	0.00	0.00	0.00	0.00	
8,307.0	0.00	0.00	8,079.0	-739.4	-1,716.6	3.00	-3.00	0.00	180.00	15A-14 - OHCR
8,404.8	1.47	250.00	8,176.8	-739.8	-1,717.7	1.50	1.50	-112.45	250.00	
12,261.2	1.47	250.00	12,032.0	-773.6	-1,810.5	0.00	0.00	0.00	0.00	15A-14 - PBHL

<b>Database:</b>	EDM 5000.1 Single User Db	<b>Local Co-ordinate Reference:</b>	Well ELU J14 FED 15A-14 496 - Slot 15A-14
<b>Company:</b>	Caerus Oil & Gas	<b>TVD Reference:</b>	RKB @ 7932.0usft (H&P 330)
<b>Project:</b>	Rio Blanco County, CO	<b>MD Reference:</b>	RKB @ 7932.0usft (H&P 330)
<b>Site:</b>	ELU J14 496 Pad	<b>North Reference:</b>	True
<b>Well:</b>	ELU J14 FED 15A-14 496	<b>Survey Calculation Method:</b>	Minimum Curvature
<b>Wellbore:</b>	Wellbore #1		
<b>Design:</b>	Design #1		

Planned Survey									
Measured Depth (usft)	Inclination (°)	Azimuth (°)	Vertical Depth (usft)	+N/-S (usft)	+E/-W (usft)	Vertical Section (usft)	Dogleg Rate (°/100usft)	Build Rate (°/100usft)	Turn Rate (°/100usft)
0.0	0.00	0.00	0.0	0.0	0.0	0.0	0.00	0.00	0.00
100.0	0.00	0.00	100.0	0.0	0.0	0.0	0.00	0.00	0.00
<b>Build 3° / 100'</b>									
200.0	0.00	0.00	200.0	0.0	0.0	0.0	0.00	0.00	0.00
300.0	3.00	220.00	300.0	-2.0	-1.7	2.3	3.00	3.00	0.00
<b>EOB @ 5.00° Inc. / 220.00° Azm / Build 3° / 100'</b>									
366.7	5.00	220.00	366.5	-5.6	-4.7	6.5	3.00	3.00	0.00
400.0	5.80	226.36	399.6	-7.8	-6.8	9.4	3.00	2.41	19.07
500.0	8.47	237.69	498.9	-15.3	-16.7	21.4	3.00	2.66	11.33
600.0	11.30	243.51	597.4	-23.6	-31.7	38.4	3.00	2.83	5.82
<b>EOB @ 14.20° Inc. / 247.00° Azm</b>									
700.1	14.20	247.00	695.0	-32.7	-51.8	60.5	3.00	2.90	3.49
800.0	14.20	247.00	791.8	-42.3	-74.3	85.0	0.00	0.00	0.00
900.0	14.20	247.00	888.8	-51.9	-96.9	109.5	0.00	0.00	0.00
1,000.0	14.20	247.00	985.7	-61.5	-119.5	134.1	0.00	0.00	0.00
1,100.0	14.20	247.00	1,082.7	-71.1	-142.1	158.6	0.00	0.00	0.00
1,200.0	14.20	247.00	1,179.6	-80.7	-164.7	183.1	0.00	0.00	0.00
1,300.0	14.20	247.00	1,276.6	-90.3	-187.3	207.7	0.00	0.00	0.00
1,400.0	14.20	247.00	1,373.5	-99.8	-209.9	232.2	0.00	0.00	0.00
1,500.0	14.20	247.00	1,470.4	-109.4	-232.4	256.7	0.00	0.00	0.00
1,600.0	14.20	247.00	1,567.4	-119.0	-255.0	281.3	0.00	0.00	0.00
1,700.0	14.20	247.00	1,664.3	-128.6	-277.6	305.8	0.00	0.00	0.00
1,800.0	14.20	247.00	1,761.3	-138.2	-300.2	330.3	0.00	0.00	0.00
1,900.0	14.20	247.00	1,858.2	-147.8	-322.8	354.9	0.00	0.00	0.00
2,000.0	14.20	247.00	1,955.2	-157.4	-345.4	379.4	0.00	0.00	0.00
2,100.0	14.20	247.00	2,052.1	-166.9	-367.9	403.9	0.00	0.00	0.00
2,200.0	14.20	247.00	2,149.1	-176.5	-390.5	428.5	0.00	0.00	0.00
2,300.0	14.20	247.00	2,246.0	-186.1	-413.1	453.0	0.00	0.00	0.00
2,400.0	14.20	247.00	2,342.9	-195.7	-435.7	477.5	0.00	0.00	0.00
2,500.0	14.20	247.00	2,439.9	-205.3	-458.3	502.1	0.00	0.00	0.00
2,600.0	14.20	247.00	2,536.8	-214.9	-480.9	526.6	0.00	0.00	0.00
2,700.0	14.20	247.00	2,633.8	-224.5	-503.4	551.1	0.00	0.00	0.00
2,800.0	14.20	247.00	2,730.7	-234.0	-526.0	575.7	0.00	0.00	0.00
2,900.0	14.20	247.00	2,827.7	-243.6	-548.6	600.2	0.00	0.00	0.00
3,000.0	14.20	247.00	2,924.6	-253.2	-571.2	624.8	0.00	0.00	0.00
3,100.0	14.20	247.00	3,021.5	-262.8	-593.8	649.3	0.00	0.00	0.00
3,200.0	14.20	247.00	3,118.5	-272.4	-616.4	673.8	0.00	0.00	0.00
<b>Wasatch</b>									
3,273.8	14.20	247.00	3,190.0	-279.5	-633.0	691.9	0.00	0.00	0.00
3,300.0	14.20	247.00	3,215.4	-282.0	-639.0	698.4	0.00	0.00	0.00
3,400.0	14.20	247.00	3,312.4	-291.6	-661.5	722.9	0.00	0.00	0.00
3,500.0	14.20	247.00	3,409.3	-301.1	-684.1	747.4	0.00	0.00	0.00
3,600.0	14.20	247.00	3,506.3	-310.7	-706.7	772.0	0.00	0.00	0.00
3,700.0	14.20	247.00	3,603.2	-320.3	-729.3	796.5	0.00	0.00	0.00
3,800.0	14.20	247.00	3,700.1	-329.9	-751.9	821.0	0.00	0.00	0.00
3,900.0	14.20	247.00	3,797.1	-339.5	-774.5	845.6	0.00	0.00	0.00
4,000.0	14.20	247.00	3,894.0	-349.1	-797.0	870.1	0.00	0.00	0.00
4,100.0	14.20	247.00	3,991.0	-358.7	-819.6	894.6	0.00	0.00	0.00
4,200.0	14.20	247.00	4,087.9	-368.2	-842.2	919.2	0.00	0.00	0.00
4,300.0	14.20	247.00	4,184.9	-377.8	-864.8	943.7	0.00	0.00	0.00
4,400.0	14.20	247.00	4,281.8	-387.4	-887.4	968.2	0.00	0.00	0.00
4,500.0	14.20	247.00	4,378.8	-397.0	-910.0	992.8	0.00	0.00	0.00
4,600.0	14.20	247.00	4,475.7	-406.6	-932.6	1,017.3	0.00	0.00	0.00
4,700.0	14.20	247.00	4,572.6	-416.2	-955.1	1,041.8	0.00	0.00	0.00

<b>Database:</b>	EDM 5000.1 Single User Db	<b>Local Co-ordinate Reference:</b>	Well ELU J14 FED 15A-14 496 - Slot 15A-14
<b>Company:</b>	Caerus Oil & Gas	<b>TVD Reference:</b>	RKB @ 7932.0usft (H&P 330)
<b>Project:</b>	Rio Blanco County, CO	<b>MD Reference:</b>	RKB @ 7932.0usft (H&P 330)
<b>Site:</b>	ELU J14 496 Pad	<b>North Reference:</b>	True
<b>Well:</b>	ELU J14 FED 15A-14 496	<b>Survey Calculation Method:</b>	Minimum Curvature
<b>Wellbore:</b>	Wellbore #1		
<b>Design:</b>	Design #1		

Planned Survey									
Measured Depth (usft)	Inclination (°)	Azimuth (°)	Vertical Depth (usft)	+N/-S (usft)	+E/-W (usft)	Vertical Section (usft)	Dogleg Rate (°/100usft)	Build Rate (°/100usft)	Turn Rate (°/100usft)
4,800.0	14.20	247.00	4,669.6	-425.8	-977.7	1,066.4	0.00	0.00	0.00
4,900.0	14.20	247.00	4,766.5	-435.3	-1,000.3	1,090.9	0.00	0.00	0.00
5,000.0	14.20	247.00	4,863.5	-444.9	-1,022.9	1,115.4	0.00	0.00	0.00
5,100.0	14.20	247.00	4,960.4	-454.5	-1,045.5	1,140.0	0.00	0.00	0.00
5,200.0	14.20	247.00	5,057.4	-464.1	-1,068.1	1,164.5	0.00	0.00	0.00
5,300.0	14.20	247.00	5,154.3	-473.7	-1,090.6	1,189.0	0.00	0.00	0.00
5,400.0	14.20	247.00	5,251.2	-483.3	-1,113.2	1,213.6	0.00	0.00	0.00
5,500.0	14.20	247.00	5,348.2	-492.9	-1,135.8	1,238.1	0.00	0.00	0.00
5,600.0	14.20	247.00	5,445.1	-502.4	-1,158.4	1,262.6	0.00	0.00	0.00
5,700.0	14.20	247.00	5,542.1	-512.0	-1,181.0	1,287.2	0.00	0.00	0.00
<b>Wasatch G</b>									
5,749.4	14.20	247.00	5,590.0	-516.8	-1,192.1	1,299.3	0.00	0.00	0.00
5,800.0	14.20	247.00	5,639.0	-521.6	-1,203.6	1,311.7	0.00	0.00	0.00
5,900.0	14.20	247.00	5,736.0	-531.2	-1,226.1	1,336.3	0.00	0.00	0.00
6,000.0	14.20	247.00	5,832.9	-540.8	-1,248.7	1,360.8	0.00	0.00	0.00
6,100.0	14.20	247.00	5,929.8	-550.4	-1,271.3	1,385.3	0.00	0.00	0.00
6,200.0	14.20	247.00	6,026.8	-560.0	-1,293.9	1,409.9	0.00	0.00	0.00
6,300.0	14.20	247.00	6,123.7	-569.5	-1,316.5	1,434.4	0.00	0.00	0.00
<b>Fort Union</b>									
6,345.7	14.20	247.00	6,168.0	-573.9	-1,326.8	1,445.6	0.00	0.00	0.00
6,400.0	14.20	247.00	6,220.7	-579.1	-1,339.1	1,458.9	0.00	0.00	0.00
6,500.0	14.20	247.00	6,317.6	-588.7	-1,361.7	1,483.5	0.00	0.00	0.00
6,600.0	14.20	247.00	6,414.6	-598.3	-1,384.2	1,508.0	0.00	0.00	0.00
6,700.0	14.20	247.00	6,511.5	-607.9	-1,406.8	1,532.5	0.00	0.00	0.00
6,800.0	14.20	247.00	6,608.5	-617.5	-1,429.4	1,557.1	0.00	0.00	0.00
6,900.0	14.20	247.00	6,705.4	-627.1	-1,452.0	1,581.6	0.00	0.00	0.00
7,000.0	14.20	247.00	6,802.3	-636.6	-1,474.6	1,606.1	0.00	0.00	0.00
7,100.0	14.20	247.00	6,899.3	-646.2	-1,497.2	1,630.7	0.00	0.00	0.00
7,200.0	14.20	247.00	6,996.2	-655.8	-1,519.7	1,655.2	0.00	0.00	0.00
7,300.0	14.20	247.00	7,093.2	-665.4	-1,542.3	1,679.7	0.00	0.00	0.00
7,400.0	14.20	247.00	7,190.1	-675.0	-1,564.9	1,704.3	0.00	0.00	0.00
7,500.0	14.20	247.00	7,287.1	-684.6	-1,587.5	1,728.8	0.00	0.00	0.00
7,600.0	14.20	247.00	7,384.0	-694.2	-1,610.1	1,753.3	0.00	0.00	0.00
7,700.0	14.20	247.00	7,480.9	-703.7	-1,632.7	1,777.9	0.00	0.00	0.00
7,800.0	14.20	247.00	7,577.9	-713.3	-1,655.3	1,802.4	0.00	0.00	0.00
<b>Drop 3° /100'</b>									
7,833.6	14.20	247.00	7,610.4	-716.5	-1,662.8	1,810.6	0.00	0.00	0.00
7,900.0	12.21	247.00	7,675.1	-722.5	-1,676.8	1,825.8	3.00	-3.00	0.00
8,000.0	9.21	247.00	7,773.4	-729.7	-1,693.9	1,844.4	3.00	-3.00	0.00
8,100.0	6.21	247.00	7,872.4	-735.0	-1,706.3	1,857.8	3.00	-3.00	0.00
8,200.0	3.21	247.00	7,972.1	-738.2	-1,713.8	1,866.0	3.00	-3.00	0.00
<b>EOD @ Vertical / Build 1.5° / 100' - Ohio Creek</b>									
8,307.0	0.00	0.00	8,079.0	-739.4	-1,716.6	1,869.0	3.00	-3.00	0.00
<b>EOB @ 1.47° Inc. / 250.00° Azm</b>									
8,404.8	1.47	250.00	8,176.8	-739.8	-1,717.7	1,870.3	1.50	1.50	0.00
8,500.0	1.47	250.00	8,272.0	-740.6	-1,720.0	1,872.7	0.00	0.00	0.00
8,600.0	1.47	250.00	8,372.0	-741.5	-1,722.4	1,875.3	0.00	0.00	0.00
8,700.0	1.47	250.00	8,471.9	-742.4	-1,724.8	1,877.8	0.00	0.00	0.00
<b>Williams Fork</b>									
8,720.1	1.47	250.00	8,492.0	-742.5	-1,725.3	1,878.3	0.00	0.00	0.00
<b>TOG</b>									
8,770.1	1.47	250.00	8,542.0	-743.0	-1,726.5	1,879.6	0.00	0.00	0.00
8,800.0	1.47	250.00	8,571.9	-743.2	-1,727.3	1,880.4	0.00	0.00	0.00

<b>Database:</b>	EDM 5000.1 Single User Db	<b>Local Co-ordinate Reference:</b>	Well ELU J14 FED 15A-14 496 - Slot 15A-14
<b>Company:</b>	Caerus Oil & Gas	<b>TVD Reference:</b>	RKB @ 7932.0usft (H&P 330)
<b>Project:</b>	Rio Blanco County, CO	<b>MD Reference:</b>	RKB @ 7932.0usft (H&P 330)
<b>Site:</b>	ELU J14 496 Pad	<b>North Reference:</b>	True
<b>Well:</b>	ELU J14 FED 15A-14 496	<b>Survey Calculation Method:</b>	Minimum Curvature
<b>Wellbore:</b>	Wellbore #1		
<b>Design:</b>	Design #1		

Planned Survey									
Measured Depth (usft)	Inclination (°)	Azimuth (°)	Vertical Depth (usft)	+N/-S (usft)	+E/-W (usft)	Vertical Section (usft)	Dogleg Rate (°/100usft)	Build Rate (°/100usft)	Turn Rate (°/100usft)
8,900.0	1.47	250.00	8,671.9	-744.1	-1,729.7	1,882.9	0.00	0.00	0.00
9,000.0	1.47	250.00	8,771.8	-745.0	-1,732.1	1,885.5	0.00	0.00	0.00
9,100.0	1.47	250.00	8,871.8	-745.9	-1,734.5	1,888.0	0.00	0.00	0.00
9,200.0	1.47	250.00	8,971.8	-746.7	-1,736.9	1,890.6	0.00	0.00	0.00
9,300.0	1.47	250.00	9,071.7	-747.6	-1,739.3	1,893.2	0.00	0.00	0.00
9,400.0	1.47	250.00	9,171.7	-748.5	-1,741.7	1,895.7	0.00	0.00	0.00
9,500.0	1.47	250.00	9,271.7	-749.4	-1,744.1	1,898.3	0.00	0.00	0.00
9,600.0	1.47	250.00	9,371.6	-750.3	-1,746.5	1,900.8	0.00	0.00	0.00
9,700.0	1.47	250.00	9,471.6	-751.1	-1,748.9	1,903.4	0.00	0.00	0.00
9,800.0	1.47	250.00	9,571.6	-752.0	-1,751.3	1,905.9	0.00	0.00	0.00
9,900.0	1.47	250.00	9,671.5	-752.9	-1,753.7	1,908.5	0.00	0.00	0.00
10,000.0	1.47	250.00	9,771.5	-753.8	-1,756.1	1,911.0	0.00	0.00	0.00
10,100.0	1.47	250.00	9,871.5	-754.6	-1,758.5	1,913.6	0.00	0.00	0.00
10,200.0	1.47	250.00	9,971.4	-755.5	-1,760.9	1,916.2	0.00	0.00	0.00
10,300.0	1.47	250.00	10,071.4	-756.4	-1,763.3	1,918.7	0.00	0.00	0.00
10,400.0	1.47	250.00	10,171.4	-757.3	-1,765.7	1,921.3	0.00	0.00	0.00
10,500.0	1.47	250.00	10,271.3	-758.1	-1,768.2	1,923.8	0.00	0.00	0.00
10,600.0	1.47	250.00	10,371.3	-759.0	-1,770.6	1,926.4	0.00	0.00	0.00
10,700.0	1.47	250.00	10,471.3	-759.9	-1,773.0	1,928.9	0.00	0.00	0.00
10,800.0	1.47	250.00	10,571.2	-760.8	-1,775.4	1,931.5	0.00	0.00	0.00
10,900.0	1.47	250.00	10,671.2	-761.6	-1,777.8	1,934.1	0.00	0.00	0.00
11,000.0	1.47	250.00	10,771.2	-762.5	-1,780.2	1,936.6	0.00	0.00	0.00
11,100.0	1.47	250.00	10,871.1	-763.4	-1,782.6	1,939.2	0.00	0.00	0.00
11,200.0	1.47	250.00	10,971.1	-764.3	-1,785.0	1,941.7	0.00	0.00	0.00
<b>Cameo</b>									
11,264.9	1.47	250.00	11,036.0	-764.8	-1,786.6	1,943.4	0.00	0.00	0.00
11,300.0	1.47	250.00	11,071.1	-765.1	-1,787.4	1,944.3	0.00	0.00	0.00
11,400.0	1.47	250.00	11,171.0	-766.0	-1,789.8	1,946.8	0.00	0.00	0.00
11,500.0	1.47	250.00	11,271.0	-766.9	-1,792.2	1,949.4	0.00	0.00	0.00
11,600.0	1.47	250.00	11,371.0	-767.8	-1,794.6	1,952.0	0.00	0.00	0.00
11,700.0	1.47	250.00	11,470.9	-768.6	-1,797.0	1,954.5	0.00	0.00	0.00
11,800.0	1.47	250.00	11,570.9	-769.5	-1,799.4	1,957.1	0.00	0.00	0.00
11,900.0	1.47	250.00	11,670.9	-770.4	-1,801.8	1,959.6	0.00	0.00	0.00
12,000.0	1.47	250.00	11,770.8	-771.3	-1,804.2	1,962.2	0.00	0.00	0.00
<b>Rollins</b>									
12,061.2	1.47	250.00	11,832.0	-771.8	-1,805.7	1,963.7	0.00	0.00	0.00
12,100.0	1.47	250.00	11,870.8	-772.1	-1,806.7	1,964.7	0.00	0.00	0.00
12,200.0	1.47	250.00	11,970.8	-773.0	-1,809.1	1,967.3	0.00	0.00	0.00
<b>TD @ 12261.2' MD / 12032.0' TVD</b>									
12,261.2	1.47	250.00	12,032.0	-773.6	-1,810.5	1,968.9	0.00	0.00	0.00

<b>Database:</b>	EDM 5000.1 Single User Db	<b>Local Co-ordinate Reference:</b>	Well ELU J14 FED 15A-14 496 - Slot 15A-14
<b>Company:</b>	Caerus Oil & Gas	<b>TVD Reference:</b>	RKB @ 7932.0usft (H&P 330)
<b>Project:</b>	Rio Blanco County, CO	<b>MD Reference:</b>	RKB @ 7932.0usft (H&P 330)
<b>Site:</b>	ELU J14 496 Pad	<b>North Reference:</b>	True
<b>Well:</b>	ELU J14 FED 15A-14 496	<b>Survey Calculation Method:</b>	Minimum Curvature
<b>Wellbore:</b>	Wellbore #1		
<b>Design:</b>	Design #1		

## Design Targets

## Target Name

- hit/miss target - Shape	Dip Angle (°)	Dip Dir. (°)	TVD (usft)	+N/-S (usft)	+E/-W (usft)	Northing (usft)	Easting (usft)	Latitude	Longitude
15A-14 - OHCR - plan hits target center - Point	0.00	0.00	8,079.0	-739.4	-1,716.6	14,429,161.39	2,444,401.63	39.698737	-108.141964
15A-14 - PBHL - plan hits target center - Ellipse (radii L100.0 W50.0 on 250.00 azi)	0.00	0.00	12,032.0	-773.6	-1,810.5	14,429,124.20	2,444,308.80	39.698643	-108.142298

## Formations

Measured Depth (usft)	Vertical Depth (usft)	Name	Lithology	Dip (°)	Dip Direction (°)
3,273.8	3,190.0	Wasatch			
5,749.4	5,590.0	Wasatch G			
6,345.7	6,168.0	Fort Union			
8,307.0	8,079.0	Ohio Creek			
8,720.1	8,492.0	Williams Fork			
8,770.1	8,542.0	TOG			
11,264.9	11,036.0	Cameo			
12,061.2	11,832.0	Rollins			

## Plan Annotations

Measured Depth (usft)	Vertical Depth (usft)	Local Coordinates		Comment
		+N/-S (usft)	+E/-W (usft)	
200.0	200.0	0.0	0.0	Build 3° / 100'
366.7	366.5	-5.6	-4.7	EOB @ 5.00° Inc. / 220.00° Azm / Build 3° / 100'
700.1	695.0	-32.7	-51.8	EOB @ 14.20° Inc. / 247.00° Azm
7,833.6	7,610.4	-716.5	-1,662.8	Drop 3° / 100'
8,307.0	8,079.0	-739.4	-1,716.6	EOD @ Vertical / Build 1.5° / 100'
8,404.8	8,176.8	-739.8	-1,717.7	EOB @ 1.47° Inc. / 250.00° Azm
12,261.2	12,032.0	-773.6	-1,810.5	TD @ 12261.2' MD / 12032.0' TVD