

Project: Rio Blanco County, CO
 Site: ELU J14 496 Pad
 Well: ELU J14 FED 14C-14 496
 Wellbore: Wellbore #1
 Design: Design #1
 Latitude: 39.700781
 Longitude: -108.135916
 Ground Level: 7902.0
 RKB @ 7932.0usft (H&P #330)

PROJECT DETAILS: Rio Blanco County, CO
 Geodetic System: Universal Transverse Mercator (US Survey Feet)
 Datum: NAD 1927 - Western US
 Ellipsoid: Clarke 1866
 Zone: Zone 12N (114 W to 108 W)
 System Datum: Mean Sea Level

REFERENCE INFORMATION
 Co-ordinate (N/E) Reference: Well ELU J14 FED 14C-14 496 - Slot 14C-14, True North
 Vertical (TVD) Reference: RKB @ 7932.0usft (H&P #330)
 Section (VS) Reference: Slot - 14C-14(0.0N, 0.0E)
 Measured Depth Reference: RKB @ 7932.0usft (H&P #330)
 Calculation Method: Minimum Curvature

SECTION DETAILS

MD	Inc	Azi	TVD	+N/-S	+E/-W	Dleg	TFace	VSect	Annotation
0.0	0.00	0.00	0.0	0.0	0.0	0.00	0.00	0.0	Build 3° / 100'
215.0	0.00	0.00	215.0	0.0	0.0	0.00	0.00	0.0	EOB @ 5.00° Inc. / 250.00° Azm / Build 3° / 100'
381.7	5.00	250.00	381.5	-2.5	-6.8	3.00	250.00	7.1	EOB @ 12.74° Inc. / 262.91° Azm
646.4	12.74	262.91	642.9	-10.0	-46.7	3.00	20.88	47.6	Drop 3° / 100'
7885.6	12.74	262.91	7703.9	-207.1	-1630.8	0.00	0.00	1643.8	EOD @ Vertical / Build 1.5° / 100'
8310.2	0.00	0.00	8125.0	-212.9	-1677.4	3.00	180.00	1690.8	EOB @ 1.47° Inc. / 250.00° Azm
8408.5	1.47	250.00	8223.2	-213.4	-1678.6	1.50	250.00	1692.0	TD @ 12247.5' MD / 12061.0' TVD
12247.5	1.47	250.00	12061.0	-247.1	-1771.4	0.00	0.00	1788.6	

DESIGN TARGET DETAILS

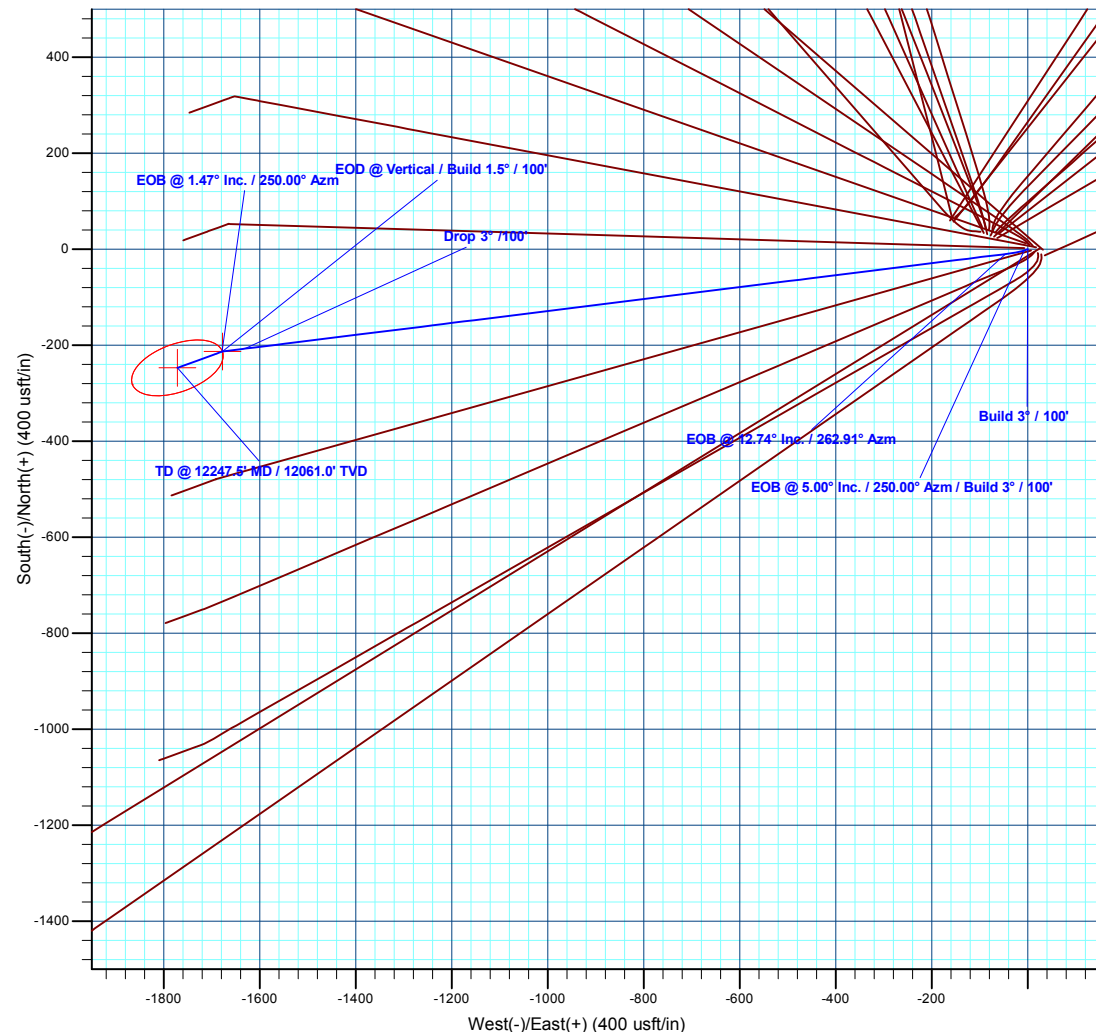
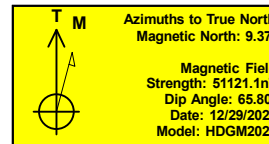
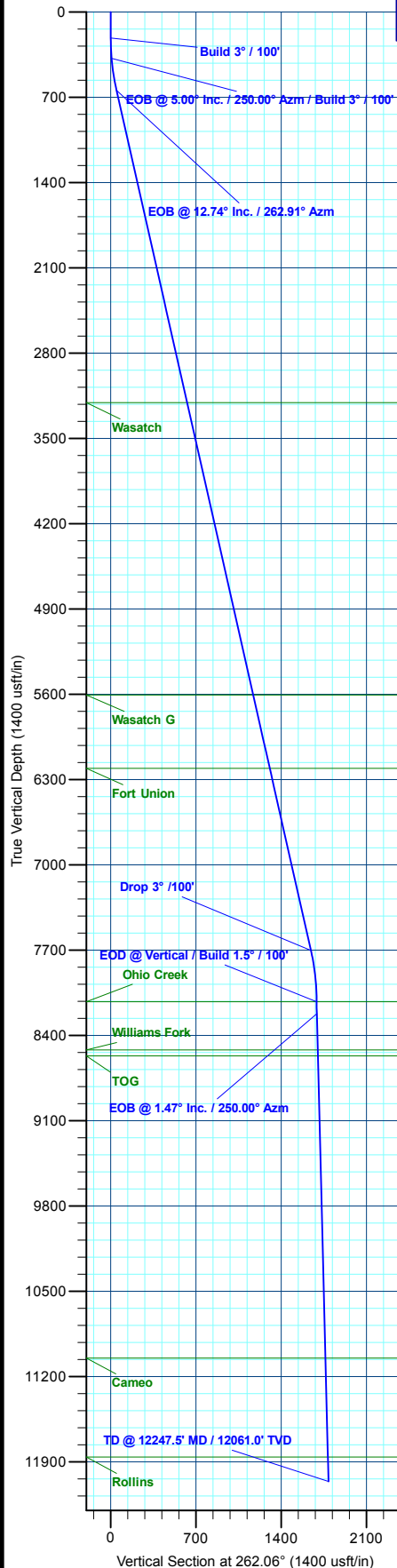
Name	TVD	+N/-S	+E/-W	Northing	Easting	Latitude	Longitude
14C-14 - OHCR	8125.0	-212.9	-1677.4	14429693.59	2444409.63	39.700196	-108.141875
14C-14 - PBHL	12061.0	-247.1	-1771.4	14429656.40	2444316.80	39.700102	-108.142209

FORMATION TOP DETAILS

TVDPth	MDPth	Formation
3206.0	3274.2	Wasatch
5606.0	5734.8	Wasatch G
6208.0	6352.0	Fort Union
8125.0	8310.2	Ohio Creek
8519.0	8704.3	Williams Fork
8569.0	8754.4	TOG
11050.0	11236.2	Cameo
11861.0	12047.4	Rollins

WELL DETAILS: ELU J14 FED 14C-14 496

+N/-S	+E/-W	Northing	Easting	Latitude	Longitude
0.0	0.0	14429960.00	2446079.40	39.700781	-108.135916
					14C-14



Plan: Design #1 (ELU J14 FED 14C-14 496/Wellbore #1)

Created By: Will Jircik

Date: 8:37, January 11 2021



Caerus Oil & Gas

Rio Blanco County, CO

ELU J14 496 Pad

ELU J14 FED 14C-14 496 - Slot 14C-14

Wellbore #1

Plan: Design #1

QES Well Planning Report

08 January, 2021



Database:	EDM 5000.1 Single User Db	Local Co-ordinate Reference:	Well ELU J14 FED 14C-14 496 - Slot 14C-14
Company:	Caerus Oil & Gas	TVD Reference:	RKB @ 7932.0usft (H&P #330)
Project:	Rio Blanco County, CO	MD Reference:	RKB @ 7932.0usft (H&P #330)
Site:	ELU J14 496 Pad	North Reference:	True
Well:	ELU J14 FED 14C-14 496	Survey Calculation Method:	Minimum Curvature
Wellbore:	Wellbore #1		
Design:	Design #1		

Project	Rio Blanco County, CO		
Map System:	Universal Transverse Mercator (US Survey Fee	System Datum:	Mean Sea Level
Geo Datum:	NAD 1927 - Western US		
Map Zone:	Zone 12N (114 W to 108 W)		

Site		ELU J14 496 Pad			
Site Position:		Northing:	14,429,993.30 usft	Latitude:	39.700881
From:	Map	Easting:	2,445,979.90 usft	Longitude:	-108.136266
Position Uncertainty:	0.0 usft	Slot Radius:	13-3/16 "	Grid Convergence:	1.83 °

Well	ELU J14 FED 14C-14 496 - Slot 14C-14					
Well Position	+N/-S	-36.5 usft	Northing:	14,429,960.00 usft	Latitude:	39.700781
	+E/-W	98.4 usft	Easting:	2,446,079.40 usft	Longitude:	-108.135917
Position Uncertainty		0.0 usft	Wellhead Elevation:		Ground Level:	7,902.0 usft

Wellbore	Wellbore #1				
Magnetics	Model Name	Sample Date	Declination (°)	Dip Angle (°)	Field Strength (nT)
	HDGM2020	12/29/2020	9.37	65.80	51,121.10000000

Design	Design #1			
Audit Notes:				
Version:	Phase:	PLAN	Tie On Depth:	0.0
Vertical Section:	Depth From (TVD) (usft)	+N/-S (usft)	+E/-W (usft)	Direction (°)
	0.0	0.0	0.0	262.06

Plan Sections										
Measured Depth (usft)	Inclination (°)	Azimuth (°)	Vertical Depth (usft)	+N/-S (usft)	+E/-W (usft)	Dogleg Rate (°/100usft)	Build Rate (°/100usft)	Turn Rate (°/100usft)	TFO (°)	Target
0.0	0.00	0.00	0.0	0.0	0.0	0.00	0.00	0.00	0.00	
215.0	0.00	0.00	215.0	0.0	0.0	0.00	0.00	0.00	0.00	
381.7	5.00	250.00	381.5	-2.5	-6.8	3.00	3.00	0.00	250.00	
646.4	12.74	262.91	642.9	-10.0	-46.7	3.00	2.92	4.88	20.88	
7,885.6	12.74	262.91	7,703.9	-207.1	-1,630.8	0.00	0.00	0.00	0.00	
8,310.2	0.00	0.00	8,125.0	-212.9	-1,677.4	3.00	-3.00	0.00	180.00	14C-14 - OHCR
8,408.5	1.47	250.00	8,223.2	-213.4	-1,678.6	1.50	1.50	-111.96	250.00	
12,247.5	1.47	250.00	12,061.0	-247.1	-1,771.4	0.00	0.00	0.00	0.00	14C-14 - PBHL

Database:	EDM 5000.1 Single User Db	Local Co-ordinate Reference:	Well ELU J14 FED 14C-14 496 - Slot 14C-14
Company:	Caerus Oil & Gas	TVD Reference:	RKB @ 7932.0usft (H&P #330)
Project:	Rio Blanco County, CO	MD Reference:	RKB @ 7932.0usft (H&P #330)
Site:	ELU J14 496 Pad	North Reference:	True
Well:	ELU J14 FED 14C-14 496	Survey Calculation Method:	Minimum Curvature
Wellbore:	Wellbore #1		
Design:	Design #1		

Planned Survey									
Measured Depth (usft)	Inclination (°)	Azimuth (°)	Vertical Depth (usft)	+N/-S (usft)	+E/-W (usft)	Vertical Section (usft)	Dogleg Rate (°/100usft)	Build Rate (°/100usft)	Turn Rate (°/100usft)
0.0	0.00	0.00	0.0	0.0	0.0	0.0	0.00	0.00	0.00
100.0	0.00	0.00	100.0	0.0	0.0	0.0	0.00	0.00	0.00
200.0	0.00	0.00	200.0	0.0	0.0	0.0	0.00	0.00	0.00
Build 3° / 100'									
215.0	0.00	0.00	215.0	0.0	0.0	0.0	0.00	0.00	0.00
300.0	2.55	250.00	300.0	-0.6	-1.8	1.8	3.00	3.00	0.00
EOB @ 5.00° Inc. / 250.00° Azm / Build 3° / 100'									
381.7	5.00	250.00	381.5	-2.5	-6.8	7.1	3.00	3.00	0.00
400.0	5.52	252.04	399.7	-3.0	-8.4	8.8	3.00	2.82	11.12
500.0	8.41	258.68	499.0	-5.9	-20.2	20.8	3.00	2.89	6.64
600.0	11.36	261.91	597.5	-8.8	-37.1	38.0	3.00	2.95	3.23
EOB @ 12.74° Inc. / 262.91° Azm									
646.4	12.74	262.91	642.9	-10.0	-46.7	47.6	3.00	2.97	2.15
700.0	12.74	262.91	695.1	-11.5	-58.4	59.5	0.00	0.00	0.00
800.0	12.74	262.91	792.7	-14.2	-80.3	81.5	0.00	0.00	0.00
900.0	12.74	262.91	890.2	-17.0	-102.2	103.6	0.00	0.00	0.00
1,000.0	12.74	262.91	987.7	-19.7	-124.1	125.6	0.00	0.00	0.00
1,100.0	12.74	262.91	1,085.3	-22.4	-146.0	147.6	0.00	0.00	0.00
1,200.0	12.74	262.91	1,182.8	-25.1	-167.8	169.7	0.00	0.00	0.00
1,300.0	12.74	262.91	1,280.4	-27.8	-189.7	191.7	0.00	0.00	0.00
1,400.0	12.74	262.91	1,377.9	-30.6	-211.6	213.8	0.00	0.00	0.00
1,500.0	12.74	262.91	1,475.4	-33.3	-233.5	235.8	0.00	0.00	0.00
1,600.0	12.74	262.91	1,573.0	-36.0	-255.4	257.9	0.00	0.00	0.00
1,700.0	12.74	262.91	1,670.5	-38.7	-277.2	279.9	0.00	0.00	0.00
1,800.0	12.74	262.91	1,768.1	-41.5	-299.1	302.0	0.00	0.00	0.00
1,900.0	12.74	262.91	1,865.6	-44.2	-321.0	324.0	0.00	0.00	0.00
2,000.0	12.74	262.91	1,963.1	-46.9	-342.9	346.1	0.00	0.00	0.00
2,100.0	12.74	262.91	2,060.7	-49.6	-364.8	368.1	0.00	0.00	0.00
2,200.0	12.74	262.91	2,158.2	-52.3	-386.7	390.2	0.00	0.00	0.00
2,300.0	12.74	262.91	2,255.7	-55.1	-408.5	412.2	0.00	0.00	0.00
2,400.0	12.74	262.91	2,353.3	-57.8	-430.4	434.3	0.00	0.00	0.00
2,500.0	12.74	262.91	2,450.8	-60.5	-452.3	456.3	0.00	0.00	0.00
2,600.0	12.74	262.91	2,548.4	-63.2	-474.2	478.4	0.00	0.00	0.00
2,700.0	12.74	262.91	2,645.9	-66.0	-496.1	500.4	0.00	0.00	0.00
2,800.0	12.74	262.91	2,743.4	-68.7	-517.9	522.5	0.00	0.00	0.00
2,900.0	12.74	262.91	2,841.0	-71.4	-539.8	544.5	0.00	0.00	0.00
3,000.0	12.74	262.91	2,938.5	-74.1	-561.7	566.6	0.00	0.00	0.00
3,100.0	12.74	262.91	3,036.1	-76.8	-583.6	588.6	0.00	0.00	0.00
3,200.0	12.74	262.91	3,133.6	-79.6	-605.5	610.7	0.00	0.00	0.00
Wasatch									
3,274.2	12.74	262.91	3,206.0	-81.6	-621.7	627.0	0.00	0.00	0.00
3,300.0	12.74	262.91	3,231.1	-82.3	-627.4	632.7	0.00	0.00	0.00
3,400.0	12.74	262.91	3,328.7	-85.0	-649.2	654.8	0.00	0.00	0.00
3,500.0	12.74	262.91	3,426.2	-87.7	-671.1	676.8	0.00	0.00	0.00
3,600.0	12.74	262.91	3,523.7	-90.5	-693.0	698.9	0.00	0.00	0.00
3,700.0	12.74	262.91	3,621.3	-93.2	-714.9	720.9	0.00	0.00	0.00
3,800.0	12.74	262.91	3,718.8	-95.9	-736.8	743.0	0.00	0.00	0.00
3,900.0	12.74	262.91	3,816.4	-98.6	-758.6	765.0	0.00	0.00	0.00
4,000.0	12.74	262.91	3,913.9	-101.3	-780.5	787.0	0.00	0.00	0.00
4,100.0	12.74	262.91	4,011.4	-104.1	-802.4	809.1	0.00	0.00	0.00
4,200.0	12.74	262.91	4,109.0	-106.8	-824.3	831.1	0.00	0.00	0.00
4,300.0	12.74	262.91	4,206.5	-109.5	-846.2	853.2	0.00	0.00	0.00
4,400.0	12.74	262.91	4,304.1	-112.2	-868.1	875.2	0.00	0.00	0.00
4,500.0	12.74	262.91	4,401.6	-115.0	-889.9	897.3	0.00	0.00	0.00

Database:	EDM 5000.1 Single User Db	Local Co-ordinate Reference:	Well ELU J14 FED 14C-14 496 - Slot 14C-14
Company:	Caerus Oil & Gas	TVD Reference:	RKB @ 7932.0usft (H&P #330)
Project:	Rio Blanco County, CO	MD Reference:	RKB @ 7932.0usft (H&P #330)
Site:	ELU J14 496 Pad	North Reference:	True
Well:	ELU J14 FED 14C-14 496	Survey Calculation Method:	Minimum Curvature
Wellbore:	Wellbore #1		
Design:	Design #1		

Planned Survey									
Measured Depth (usft)	Inclination (°)	Azimuth (°)	Vertical Depth (usft)	+N/-S (usft)	+E/-W (usft)	Vertical Section (usft)	Dogleg Rate (°/100usft)	Build Rate (°/100usft)	Turn Rate (°/100usft)
4,600.0	12.74	262.91	4,499.1	-117.7	-911.8	919.3	0.00	0.00	0.00
4,700.0	12.74	262.91	4,596.7	-120.4	-933.7	941.4	0.00	0.00	0.00
4,800.0	12.74	262.91	4,694.2	-123.1	-955.6	963.4	0.00	0.00	0.00
4,900.0	12.74	262.91	4,791.7	-125.8	-977.5	985.5	0.00	0.00	0.00
5,000.0	12.74	262.91	4,889.3	-128.6	-999.4	1,007.5	0.00	0.00	0.00
5,100.0	12.74	262.91	4,986.8	-131.3	-1,021.2	1,029.6	0.00	0.00	0.00
5,200.0	12.74	262.91	5,084.4	-134.0	-1,043.1	1,051.6	0.00	0.00	0.00
5,300.0	12.74	262.91	5,181.9	-136.7	-1,065.0	1,073.7	0.00	0.00	0.00
5,400.0	12.74	262.91	5,279.4	-139.5	-1,086.9	1,095.7	0.00	0.00	0.00
5,500.0	12.74	262.91	5,377.0	-142.2	-1,108.8	1,117.8	0.00	0.00	0.00
5,600.0	12.74	262.91	5,474.5	-144.9	-1,130.6	1,139.8	0.00	0.00	0.00
5,700.0	12.74	262.91	5,572.1	-147.6	-1,152.5	1,161.9	0.00	0.00	0.00
Wasatch G									
5,734.8	12.74	262.91	5,606.0	-148.6	-1,160.1	1,169.5	0.00	0.00	0.00
5,800.0	12.74	262.91	5,669.6	-150.4	-1,174.4	1,183.9	0.00	0.00	0.00
5,900.0	12.74	262.91	5,767.1	-153.1	-1,196.3	1,206.0	0.00	0.00	0.00
6,000.0	12.74	262.91	5,864.7	-155.8	-1,218.2	1,228.0	0.00	0.00	0.00
6,100.0	12.74	262.91	5,962.2	-158.5	-1,240.1	1,250.1	0.00	0.00	0.00
6,200.0	12.74	262.91	6,059.7	-161.2	-1,261.9	1,272.1	0.00	0.00	0.00
6,300.0	12.74	262.91	6,157.3	-164.0	-1,283.8	1,294.2	0.00	0.00	0.00
Fort Union									
6,352.0	12.74	262.91	6,208.0	-165.4	-1,295.2	1,305.6	0.00	0.00	0.00
6,400.0	12.74	262.91	6,254.8	-166.7	-1,305.7	1,316.2	0.00	0.00	0.00
6,500.0	12.74	262.91	6,352.4	-169.4	-1,327.6	1,338.3	0.00	0.00	0.00
6,600.0	12.74	262.91	6,449.9	-172.1	-1,349.5	1,360.3	0.00	0.00	0.00
6,700.0	12.74	262.91	6,547.4	-174.9	-1,371.3	1,382.4	0.00	0.00	0.00
6,800.0	12.74	262.91	6,645.0	-177.6	-1,393.2	1,404.4	0.00	0.00	0.00
6,900.0	12.74	262.91	6,742.5	-180.3	-1,415.1	1,426.4	0.00	0.00	0.00
7,000.0	12.74	262.91	6,840.1	-183.0	-1,437.0	1,448.5	0.00	0.00	0.00
7,100.0	12.74	262.91	6,937.6	-185.7	-1,458.9	1,470.5	0.00	0.00	0.00
7,200.0	12.74	262.91	7,035.1	-188.5	-1,480.8	1,492.6	0.00	0.00	0.00
7,300.0	12.74	262.91	7,132.7	-191.2	-1,502.6	1,514.6	0.00	0.00	0.00
7,400.0	12.74	262.91	7,230.2	-193.9	-1,524.5	1,536.7	0.00	0.00	0.00
7,500.0	12.74	262.91	7,327.7	-196.6	-1,546.4	1,558.7	0.00	0.00	0.00
7,600.0	12.74	262.91	7,425.3	-199.4	-1,568.3	1,580.8	0.00	0.00	0.00
7,700.0	12.74	262.91	7,522.8	-202.1	-1,590.2	1,602.8	0.00	0.00	0.00
7,800.0	12.74	262.91	7,620.4	-204.8	-1,612.0	1,624.9	0.00	0.00	0.00
Drop 3° / 100'									
7,885.6	12.74	262.91	7,703.9	-207.1	-1,630.8	1,643.8	0.00	0.00	0.00
7,900.0	12.31	262.91	7,717.9	-207.5	-1,633.9	1,646.9	3.00	-3.00	0.00
8,000.0	9.31	262.91	7,816.1	-209.8	-1,652.5	1,665.6	3.00	-3.00	0.00
8,100.0	6.31	262.91	7,915.2	-211.5	-1,666.0	1,679.2	3.00	-3.00	0.00
8,200.0	3.31	262.91	8,014.8	-212.5	-1,674.3	1,687.6	3.00	-3.00	0.00
8,300.0	0.31	262.91	8,114.8	-212.9	-1,677.4	1,690.7	3.00	-3.00	0.00
EOD @ Vertical / Build 1.5° / 100' - Ohio Creek									
8,310.2	0.00	0.00	8,125.0	-212.9	-1,677.4	1,690.8	3.00	-3.00	0.00
EOB @ 1.47° Inc. / 250.00° Azm									
8,408.5	1.47	250.00	8,223.2	-213.4	-1,678.6	1,692.0	1.50	1.50	0.00
8,500.0	1.47	250.00	8,314.7	-214.2	-1,680.8	1,694.3	0.00	0.00	0.00
8,600.0	1.47	250.00	8,414.7	-215.1	-1,683.2	1,696.8	0.00	0.00	0.00
8,700.0	1.47	250.00	8,514.7	-215.9	-1,685.7	1,699.3	0.00	0.00	0.00
Williams Fork									
8,704.3	1.47	250.00	8,519.0	-216.0	-1,685.8	1,699.4	0.00	0.00	0.00

Database:	EDM 5000.1 Single User Db	Local Co-ordinate Reference:	Well ELU J14 FED 14C-14 496 - Slot 14C-14
Company:	Caerus Oil & Gas	TVD Reference:	RKB @ 7932.0usft (H&P #330)
Project:	Rio Blanco County, CO	MD Reference:	RKB @ 7932.0usft (H&P #330)
Site:	ELU J14 496 Pad	North Reference:	True
Well:	ELU J14 FED 14C-14 496	Survey Calculation Method:	Minimum Curvature
Wellbore:	Wellbore #1		
Design:	Design #1		

Planned Survey									
Measured Depth (usft)	Inclination (°)	Azimuth (°)	Vertical Depth (usft)	+N/-S (usft)	+E/-W (usft)	Vertical Section (usft)	Dogleg Rate (°/100usft)	Build Rate (°/100usft)	Turn Rate (°/100usft)
TOG									
8,754.4	1.47	250.00	8,569.0	-216.4	-1,687.0	1,700.7	0.00	0.00	0.00
8,800.0	1.47	250.00	8,614.6	-216.8	-1,688.1	1,701.8	0.00	0.00	0.00
8,900.0	1.47	250.00	8,714.6	-217.7	-1,690.5	1,704.4	0.00	0.00	0.00
9,000.0	1.47	250.00	8,814.6	-218.6	-1,692.9	1,706.9	0.00	0.00	0.00
9,100.0	1.47	250.00	8,914.5	-219.5	-1,695.3	1,709.4	0.00	0.00	0.00
9,200.0	1.47	250.00	9,014.5	-220.3	-1,697.7	1,711.9	0.00	0.00	0.00
9,300.0	1.47	250.00	9,114.5	-221.2	-1,700.2	1,714.4	0.00	0.00	0.00
9,400.0	1.47	250.00	9,214.4	-222.1	-1,702.6	1,716.9	0.00	0.00	0.00
9,500.0	1.47	250.00	9,314.4	-223.0	-1,705.0	1,719.5	0.00	0.00	0.00
9,600.0	1.47	250.00	9,414.4	-223.9	-1,707.4	1,722.0	0.00	0.00	0.00
9,700.0	1.47	250.00	9,514.3	-224.7	-1,709.8	1,724.5	0.00	0.00	0.00
9,800.0	1.47	250.00	9,614.3	-225.6	-1,712.2	1,727.0	0.00	0.00	0.00
9,900.0	1.47	250.00	9,714.3	-226.5	-1,714.7	1,729.5	0.00	0.00	0.00
10,000.0	1.47	250.00	9,814.2	-227.4	-1,717.1	1,732.0	0.00	0.00	0.00
10,100.0	1.47	250.00	9,914.2	-228.2	-1,719.5	1,734.5	0.00	0.00	0.00
10,200.0	1.47	250.00	10,014.2	-229.1	-1,721.9	1,737.1	0.00	0.00	0.00
10,300.0	1.47	250.00	10,114.1	-230.0	-1,724.3	1,739.6	0.00	0.00	0.00
10,400.0	1.47	250.00	10,214.1	-230.9	-1,726.7	1,742.1	0.00	0.00	0.00
10,500.0	1.47	250.00	10,314.1	-231.8	-1,729.2	1,744.6	0.00	0.00	0.00
10,600.0	1.47	250.00	10,414.0	-232.6	-1,731.6	1,747.1	0.00	0.00	0.00
10,700.0	1.47	250.00	10,514.0	-233.5	-1,734.0	1,749.6	0.00	0.00	0.00
10,800.0	1.47	250.00	10,614.0	-234.4	-1,736.4	1,752.1	0.00	0.00	0.00
10,900.0	1.47	250.00	10,713.9	-235.3	-1,738.8	1,754.7	0.00	0.00	0.00
11,000.0	1.47	250.00	10,813.9	-236.2	-1,741.2	1,757.2	0.00	0.00	0.00
11,100.0	1.47	250.00	10,913.9	-237.0	-1,743.7	1,759.7	0.00	0.00	0.00
11,200.0	1.47	250.00	11,013.8	-237.9	-1,746.1	1,762.2	0.00	0.00	0.00
Cameo									
11,236.2	1.47	250.00	11,050.0	-238.2	-1,747.0	1,763.1	0.00	0.00	0.00
11,300.0	1.47	250.00	11,113.8	-238.8	-1,748.5	1,764.7	0.00	0.00	0.00
11,400.0	1.47	250.00	11,213.8	-239.7	-1,750.9	1,767.2	0.00	0.00	0.00
11,500.0	1.47	250.00	11,313.7	-240.6	-1,753.3	1,769.8	0.00	0.00	0.00
11,600.0	1.47	250.00	11,413.7	-241.4	-1,755.7	1,772.3	0.00	0.00	0.00
11,700.0	1.47	250.00	11,513.7	-242.3	-1,758.2	1,774.8	0.00	0.00	0.00
11,800.0	1.47	250.00	11,613.6	-243.2	-1,760.6	1,777.3	0.00	0.00	0.00
11,900.0	1.47	250.00	11,713.6	-244.1	-1,763.0	1,779.8	0.00	0.00	0.00
12,000.0	1.47	250.00	11,813.6	-245.0	-1,765.4	1,782.3	0.00	0.00	0.00
Rollins									
12,047.4	1.47	250.00	11,861.0	-245.4	-1,766.6	1,783.5	0.00	0.00	0.00
12,100.0	1.47	250.00	11,913.5	-245.8	-1,767.8	1,784.8	0.00	0.00	0.00
12,200.0	1.47	250.00	12,013.5	-246.7	-1,770.3	1,787.4	0.00	0.00	0.00
TD @ 12247.5' MD / 12061.0' TVD									
12,247.5	1.47	250.00	12,061.0	-247.1	-1,771.4	1,788.6	0.00	0.00	0.00

Database:	EDM 5000.1 Single User Db	Local Co-ordinate Reference:	Well ELU J14 FED 14C-14 496 - Slot 14C-14
Company:	Caerus Oil & Gas	TVD Reference:	RKB @ 7932.0usft (H&P #330)
Project:	Rio Blanco County, CO	MD Reference:	RKB @ 7932.0usft (H&P #330)
Site:	ELU J14 496 Pad	North Reference:	True
Well:	ELU J14 FED 14C-14 496	Survey Calculation Method:	Minimum Curvature
Wellbore:	Wellbore #1		
Design:	Design #1		

Design Targets

Target Name

- hit/miss target	Dip Angle (°)	Dip Dir. (°)	TVD (usft)	+N/-S (usft)	+E/-W (usft)	Northing (usft)	Easting (usft)	Latitude	Longitude
- Shape									
14C-14 - OHCR	0.00	0.00	8,125.0	-212.9	-1,677.4	14,429,693.59	2,444,409.63	39.700196	-108.141876
- plan hits target center									
- Point									
14C-14 - PBHL	0.00	0.00	12,061.0	-247.1	-1,771.4	14,429,656.40	2,444,316.80	39.700102	-108.142210
- plan hits target center									
- Ellipse (radii L100.0 W50.0 on 250.00 azi)									

Formations

Measured Depth (usft)	Vertical Depth (usft)	Name	Lithology	Dip (°)	Dip Direction (°)
3,274.2	3,206.0	Wasatch			
5,734.8	5,606.0	Wasatch G			
6,352.0	6,208.0	Fort Union			
8,310.2	8,125.0	Ohio Creek			
8,704.3	8,519.0	Williams Fork			
8,754.4	8,569.0	TOG			
11,236.2	11,050.0	Cameo			
12,047.4	11,861.0	Rollins			

Plan Annotations

Measured Depth (usft)	Vertical Depth (usft)	Local Coordinates		Comment
		+N/-S (usft)	+E/-W (usft)	
215.0	215.0	0.0	0.0	Build 3° / 100'
381.7	381.5	-2.5	-6.8	EOB @ 5.00° Inc. / 250.00° Azm / Build 3° / 100'
646.4	642.9	-10.0	-46.7	EOB @ 12.74° Inc. / 262.91° Azm
7,885.6	7,703.9	-207.1	-1,630.8	Drop 3° / 100'
8,310.2	8,125.0	-212.9	-1,677.4	EOD @ Vertical / Build 1.5° / 100'
8,408.5	8,223.2	-213.4	-1,678.6	EOB @ 1.47° Inc. / 250.00° Azm
12,247.5	12,061.0	-247.1	-1,771.4	TD @ 12247.5' MD / 12061.0' TVD