

Project: Rio Blanco County, CO
 Site: ELU J14 496 Pad
 Well: ELU J14 FED 14B-14 496
 Wellbore: Wellbore #1
 Design: Design #1
 Latitude: 39.700788
 Longitude: -108.135941
 Ground Level: 7902.0
 RKB @ 7932.0usft (H&P #330)

PROJECT DETAILS: Rio Blanco County, CO
 Geodetic System: Universal Transverse Mercator (US Survey Feet)
 Datum: NAD 1927 - Western US
 Ellipsoid: Clarke 1866
 Zone: Zone 12N (114 W to 108 W)
 System Datum: Mean Sea Level

REFERENCE INFORMATION
 Co-ordinate (N/E) Reference: Well ELU J14 FED 14B-14 496 - Slot 14B-14, True North
 Vertical (TVD) Reference: RKB @ 7932.0usft (H&P #330)
 Section (VS) Reference: Slot - 14B-14(0.0N, 0.0E)
 Measured Depth Reference: RKB @ 7932.0usft (H&P #330)
 Calculation Method: Minimum Curvature

SECTION DETAILS

MD	Inc	Azi	TVD	+N/-S	+E/-W	Dieg	TFace	VSect	Annotation
0.0	0.00	0.00	0.0	0.0	0.0	0.00	0.00	0.0	
200.0	0.00	0.00	200.0	0.0	0.0	0.00	0.00	0.0	Build 3° / 100'
614.4	12.43	271.74	611.2	1.4	-44.8	3.00	271.74	44.8	EOB @ 12.43° Inc. / 271.74° Azm
7903.0	12.43	271.74	7728.8	48.9	-1613.1	0.00	0.00	1613.5	Drop 3° / 100'
8317.4	0.00	0.00	8140.0	50.3	-1657.9	3.00	180.00	1658.3	EOD @ Vertical / Build 1.5° / 100'
8415.6	1.47	250.00	8238.2	49.8	-1659.1	1.50	250.00	1659.5	EOB @ 1.47° Inc. / 250.00° Azm
12256.7	1.47	250.00	12078.0	16.1	-1751.9	0.00	0.00	1752.0	TD @ 12256.7' MD / 12078.0' TVD

DESIGN TARGET DETAILS

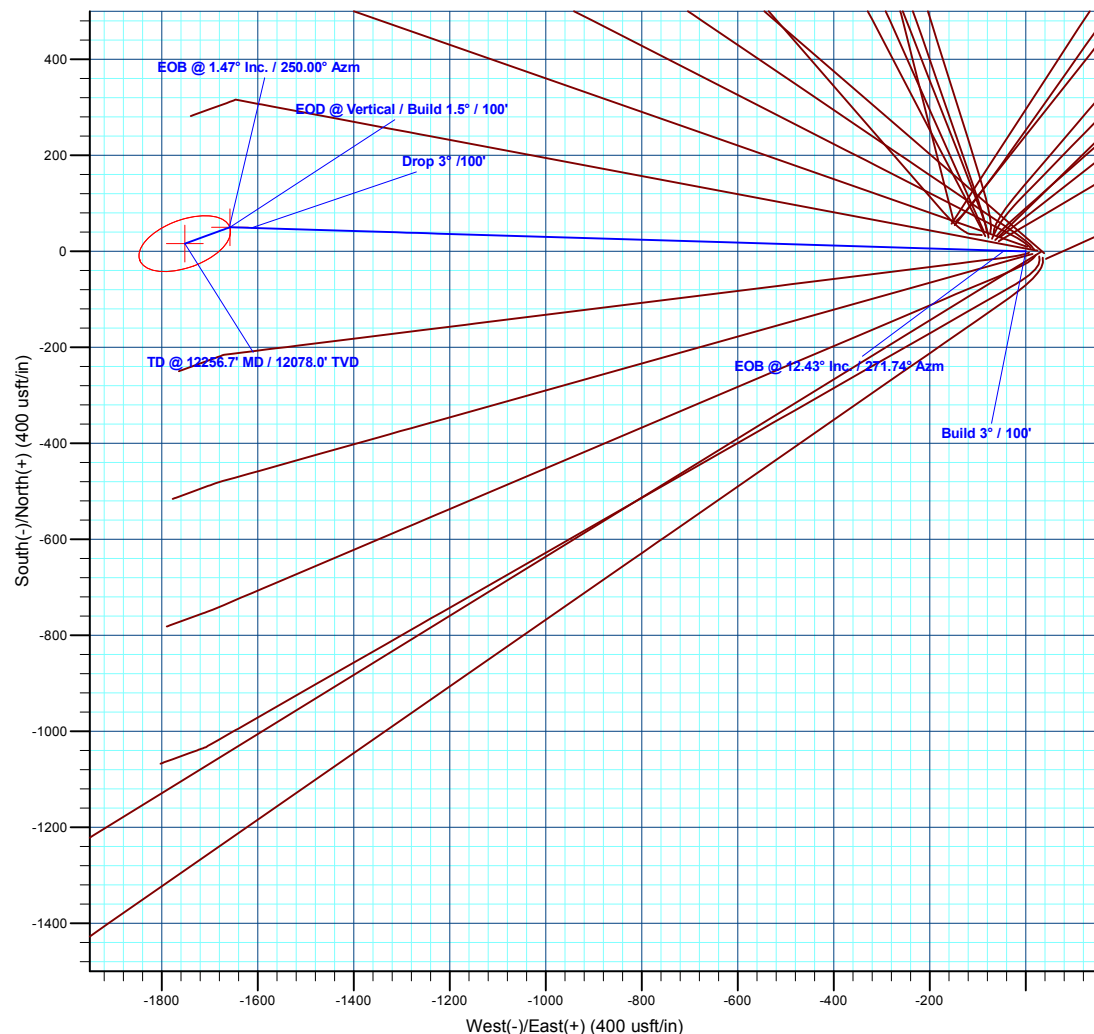
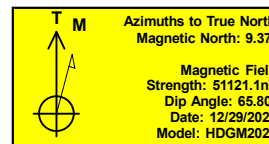
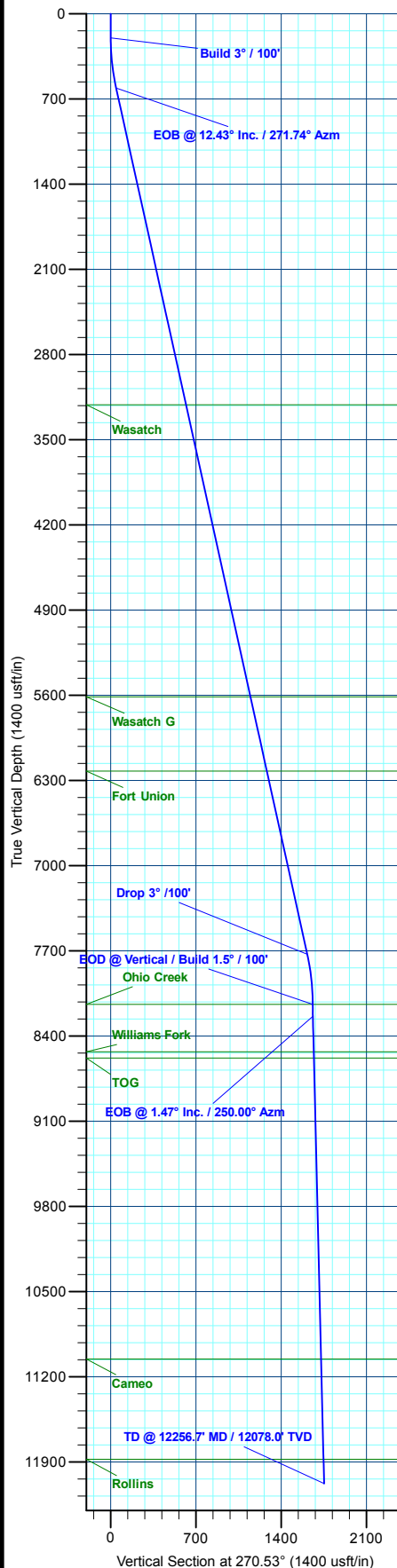
Name	TVD	+N/-S	+E/-W	Northing	Easting	Latitude	Longitude
14B-14 - OHCR	8140.0	50.3	-1657.9	14429959.69	2444413.63	39.700926	-108.141831
14B-14 - PBHL	12078.0	16.1	-1751.9	14429922.50	2444320.80	39.700832	-108.142165

FORMATION TOP DETAILS

TVDPATH	MDPATH	Formation
3213.0	3278.7	Wasatch
5613.0	5736.3	Wasatch G
6224.0	6362.0	Fort Union
8140.0	8317.4	Ohio Creek
8531.0	8708.5	Williams Fork
8581.0	8758.5	TOG
11055.0	11233.3	Cameo
11878.0	12056.6	Rollins

WELL DETAILS: ELU J14 FED 14B-14 496

+N/-S	+E/-W	Northing	Easting	Latitude	Longitude	14B-14
0.0	0.0	14429962.40	2446072.30	39.700788	-108.135941	



Plan: Design #1 (ELU J14 FED 14B-14 496/Wellbore #1)

Created By: Will Jircik

Date: 8:34, January 11 2021



Caerus Oil & Gas

Rio Blanco County, CO

ELU J14 496 Pad

ELU J14 FED 14B-14 496 - Slot 14B-14

Wellbore #1

Plan: Design #1

QES Well Planning Report

08 January, 2021



Database:	EDM 5000.1 Single User Db	Local Co-ordinate Reference:	Well ELU J14 FED 14B-14 496 - Slot 14B-14
Company:	Caerus Oil & Gas	TVD Reference:	RKB @ 7932.0usft (H&P #330)
Project:	Rio Blanco County, CO	MD Reference:	RKB @ 7932.0usft (H&P #330)
Site:	ELU J14 496 Pad	North Reference:	True
Well:	ELU J14 FED 14B-14 496	Survey Calculation Method:	Minimum Curvature
Wellbore:	Wellbore #1		
Design:	Design #1		

Project	Rio Blanco County, CO		
Map System:	Universal Transverse Mercator (US Survey Fee	System Datum:	Mean Sea Level
Geo Datum:	NAD 1927 - Western US		
Map Zone:	Zone 12N (114 W to 108 W)		

Site		ELU J14 496 Pad			
Site Position:		Northing:	14,429,993.30 usft	Latitude:	39.700881
From:	Map	Easting:	2,445,979.90 usft	Longitude:	-108.136266
Position Uncertainty:	0.0 usft	Slot Radius:	13-3/16 "	Grid Convergence:	1.83 °

Well	ELU J14 FED 14B-14 496 - Slot 14B-14					
Well Position	+N/-S	-33.8 usft	Northing:	14,429,962.40 usft	Latitude:	39.700788
	+E/-W	91.4 usft	Easting:	2,446,072.30 usft	Longitude:	-108.135942
Position Uncertainty	0.0 usft		Wellhead Elevation:		Ground Level:	7,902.0 usft

Wellbore	Wellbore #1				
Magnetics	Model Name	Sample Date	Declination (°)	Dip Angle (°)	Field Strength (nT)
	HDGM2020	12/29/2020	9.37	65.80	51,121.10000000

Design	Design #1				
Audit Notes:					
Version:	Phase:	PLAN	Tie On Depth:	0.0	
Vertical Section:	Depth From (TVD) (usft)	+N/-S (usft)	+E/-W (usft)	Direction (°)	
	0.0	0.0	0.0	270.53	

Plan Sections										
Measured Depth (usft)	Inclination (°)	Azimuth (°)	Vertical Depth (usft)	+N/-S (usft)	+E/-W (usft)	Dogleg Rate (°/100usft)	Build Rate (°/100usft)	Turn Rate (°/100usft)	TFO (°)	Target
0.0	0.00	0.00	0.0	0.0	0.0	0.00	0.00	0.00	0.00	
200.0	0.00	0.00	200.0	0.0	0.0	0.00	0.00	0.00	0.00	
614.4	12.43	271.74	611.2	1.4	-44.8	3.00	3.00	0.00	271.74	
7,903.0	12.43	271.74	7,728.8	48.9	-1,613.1	0.00	0.00	0.00	0.00	
8,317.4	0.00	0.00	8,140.0	50.3	-1,657.9	3.00	-3.00	0.00	180.00	14B-14 - OHCR
8,415.6	1.47	250.00	8,238.2	49.8	-1,659.1	1.50	1.50	-112.02	250.00	
12,256.7	1.47	250.00	12,078.0	16.1	-1,751.9	0.00	0.00	0.00	0.00	14B-14 - PBHL

Database:	EDM 5000.1 Single User Db	Local Co-ordinate Reference:	Well ELU J14 FED 14B-14 496 - Slot 14B-14
Company:	Caerus Oil & Gas	TVD Reference:	RKB @ 7932.0usft (H&P #330)
Project:	Rio Blanco County, CO	MD Reference:	RKB @ 7932.0usft (H&P #330)
Site:	ELU J14 496 Pad	North Reference:	True
Well:	ELU J14 FED 14B-14 496	Survey Calculation Method:	Minimum Curvature
Wellbore:	Wellbore #1		
Design:	Design #1		

Planned Survey									
Measured Depth (usft)	Inclination (°)	Azimuth (°)	Vertical Depth (usft)	+N/-S (usft)	+E/-W (usft)	Vertical Section (usft)	Dogleg Rate (°/100usft)	Build Rate (°/100usft)	Turn Rate (°/100usft)
0.0	0.00	0.00	0.0	0.0	0.0	0.0	0.00	0.00	0.00
100.0	0.00	0.00	100.0	0.0	0.0	0.0	0.00	0.00	0.00
Build 3° / 100'									
200.0	0.00	0.00	200.0	0.0	0.0	0.0	0.00	0.00	0.00
300.0	3.00	271.74	300.0	0.1	-2.6	2.6	3.00	3.00	0.00
400.0	6.00	271.74	399.6	0.3	-10.5	10.5	3.00	3.00	0.00
500.0	9.00	271.74	498.8	0.7	-23.5	23.5	3.00	3.00	0.00
600.0	12.00	271.74	597.1	1.3	-41.7	41.7	3.00	3.00	0.00
EOB @ 12.43° Inc. / 271.74° Azm									
614.4	12.43	271.74	611.2	1.4	-44.8	44.8	3.00	3.00	0.00
700.0	12.43	271.74	694.7	1.9	-63.2	63.2	0.00	0.00	0.00
800.0	12.43	271.74	792.4	2.6	-84.7	84.7	0.00	0.00	0.00
900.0	12.43	271.74	890.1	3.2	-106.2	106.2	0.00	0.00	0.00
1,000.0	12.43	271.74	987.7	3.9	-127.7	127.8	0.00	0.00	0.00
1,100.0	12.43	271.74	1,085.4	4.5	-149.3	149.3	0.00	0.00	0.00
1,200.0	12.43	271.74	1,183.0	5.2	-170.8	170.8	0.00	0.00	0.00
1,300.0	12.43	271.74	1,280.7	5.8	-192.3	192.3	0.00	0.00	0.00
1,400.0	12.43	271.74	1,378.3	6.5	-213.8	213.9	0.00	0.00	0.00
1,500.0	12.43	271.74	1,476.0	7.1	-235.3	235.4	0.00	0.00	0.00
1,600.0	12.43	271.74	1,573.6	7.8	-256.8	256.9	0.00	0.00	0.00
1,700.0	12.43	271.74	1,671.3	8.4	-278.4	278.4	0.00	0.00	0.00
1,800.0	12.43	271.74	1,769.0	9.1	-299.9	300.0	0.00	0.00	0.00
1,900.0	12.43	271.74	1,866.6	9.7	-321.4	321.5	0.00	0.00	0.00
2,000.0	12.43	271.74	1,964.3	10.4	-342.9	343.0	0.00	0.00	0.00
2,100.0	12.43	271.74	2,061.9	11.1	-364.4	364.5	0.00	0.00	0.00
2,200.0	12.43	271.74	2,159.6	11.7	-386.0	386.0	0.00	0.00	0.00
2,300.0	12.43	271.74	2,257.2	12.4	-407.5	407.6	0.00	0.00	0.00
2,400.0	12.43	271.74	2,354.9	13.0	-429.0	429.1	0.00	0.00	0.00
2,500.0	12.43	271.74	2,452.5	13.7	-450.5	450.6	0.00	0.00	0.00
2,600.0	12.43	271.74	2,550.2	14.3	-472.0	472.1	0.00	0.00	0.00
2,700.0	12.43	271.74	2,647.9	15.0	-493.5	493.7	0.00	0.00	0.00
2,800.0	12.43	271.74	2,745.5	15.6	-515.1	515.2	0.00	0.00	0.00
2,900.0	12.43	271.74	2,843.2	16.3	-536.6	536.7	0.00	0.00	0.00
3,000.0	12.43	271.74	2,940.8	16.9	-558.1	558.2	0.00	0.00	0.00
3,100.0	12.43	271.74	3,038.5	17.6	-579.6	579.8	0.00	0.00	0.00
3,200.0	12.43	271.74	3,136.1	18.2	-601.1	601.3	0.00	0.00	0.00
Wasatch									
3,278.7	12.43	271.74	3,213.0	18.7	-618.1	618.2	0.00	0.00	0.00
3,300.0	12.43	271.74	3,233.8	18.9	-622.7	622.8	0.00	0.00	0.00
3,400.0	12.43	271.74	3,331.4	19.5	-644.2	644.3	0.00	0.00	0.00
3,500.0	12.43	271.74	3,429.1	20.2	-665.7	665.9	0.00	0.00	0.00
3,600.0	12.43	271.74	3,526.7	20.8	-687.2	687.4	0.00	0.00	0.00
3,700.0	12.43	271.74	3,624.4	21.5	-708.7	708.9	0.00	0.00	0.00
3,800.0	12.43	271.74	3,722.1	22.1	-730.3	730.4	0.00	0.00	0.00
3,900.0	12.43	271.74	3,819.7	22.8	-751.8	751.9	0.00	0.00	0.00
4,000.0	12.43	271.74	3,917.4	23.4	-773.3	773.5	0.00	0.00	0.00
4,100.0	12.43	271.74	4,015.0	24.1	-794.8	795.0	0.00	0.00	0.00
4,200.0	12.43	271.74	4,112.7	24.8	-816.3	816.5	0.00	0.00	0.00
4,300.0	12.43	271.74	4,210.3	25.4	-837.8	838.0	0.00	0.00	0.00
4,400.0	12.43	271.74	4,308.0	26.1	-859.4	859.6	0.00	0.00	0.00
4,500.0	12.43	271.74	4,405.6	26.7	-880.9	881.1	0.00	0.00	0.00
4,600.0	12.43	271.74	4,503.3	27.4	-902.4	902.6	0.00	0.00	0.00
4,700.0	12.43	271.74	4,601.0	28.0	-923.9	924.1	0.00	0.00	0.00

Database:	EDM 5000.1 Single User Db	Local Co-ordinate Reference:	Well ELU J14 FED 14B-14 496 - Slot 14B-14
Company:	Caerus Oil & Gas	TVD Reference:	RKB @ 7932.0usft (H&P #330)
Project:	Rio Blanco County, CO	MD Reference:	RKB @ 7932.0usft (H&P #330)
Site:	ELU J14 496 Pad	North Reference:	True
Well:	ELU J14 FED 14B-14 496	Survey Calculation Method:	Minimum Curvature
Wellbore:	Wellbore #1		
Design:	Design #1		

Planned Survey									
Measured Depth (usft)	Inclination (°)	Azimuth (°)	Vertical Depth (usft)	+N/-S (usft)	+E/-W (usft)	Vertical Section (usft)	Dogleg Rate (°/100usft)	Build Rate (°/100usft)	Turn Rate (°/100usft)
4,800.0	12.43	271.74	4,698.6	28.7	-945.4	945.7	0.00	0.00	0.00
4,900.0	12.43	271.74	4,796.3	29.3	-967.0	967.2	0.00	0.00	0.00
5,000.0	12.43	271.74	4,893.9	30.0	-988.5	988.7	0.00	0.00	0.00
5,100.0	12.43	271.74	4,991.6	30.6	-1,010.0	1,010.2	0.00	0.00	0.00
5,200.0	12.43	271.74	5,089.2	31.3	-1,031.5	1,031.8	0.00	0.00	0.00
5,300.0	12.43	271.74	5,186.9	31.9	-1,053.0	1,053.3	0.00	0.00	0.00
5,400.0	12.43	271.74	5,284.5	32.6	-1,074.5	1,074.8	0.00	0.00	0.00
5,500.0	12.43	271.74	5,382.2	33.2	-1,096.1	1,096.3	0.00	0.00	0.00
5,600.0	12.43	271.74	5,479.9	33.9	-1,117.6	1,117.8	0.00	0.00	0.00
5,700.0	12.43	271.74	5,577.5	34.5	-1,139.1	1,139.4	0.00	0.00	0.00
Wasatch G									
5,736.3	12.43	271.74	5,613.0	34.8	-1,146.9	1,147.2	0.00	0.00	0.00
5,800.0	12.43	271.74	5,675.2	35.2	-1,160.6	1,160.9	0.00	0.00	0.00
5,900.0	12.43	271.74	5,772.8	35.8	-1,182.1	1,182.4	0.00	0.00	0.00
6,000.0	12.43	271.74	5,870.5	36.5	-1,203.7	1,203.9	0.00	0.00	0.00
6,100.0	12.43	271.74	5,968.1	37.2	-1,225.2	1,225.5	0.00	0.00	0.00
6,200.0	12.43	271.74	6,065.8	37.8	-1,246.7	1,247.0	0.00	0.00	0.00
6,300.0	12.43	271.74	6,163.4	38.5	-1,268.2	1,268.5	0.00	0.00	0.00
Fort Union									
6,362.0	12.43	271.74	6,224.0	38.9	-1,281.6	1,281.9	0.00	0.00	0.00
6,400.0	12.43	271.74	6,261.1	39.1	-1,289.7	1,290.0	0.00	0.00	0.00
6,500.0	12.43	271.74	6,358.7	39.8	-1,311.2	1,311.6	0.00	0.00	0.00
6,600.0	12.43	271.74	6,456.4	40.4	-1,332.8	1,333.1	0.00	0.00	0.00
6,700.0	12.43	271.74	6,554.1	41.1	-1,354.3	1,354.6	0.00	0.00	0.00
6,800.0	12.43	271.74	6,651.7	41.7	-1,375.8	1,376.1	0.00	0.00	0.00
6,900.0	12.43	271.74	6,749.4	42.4	-1,397.3	1,397.7	0.00	0.00	0.00
7,000.0	12.43	271.74	6,847.0	43.0	-1,418.8	1,419.2	0.00	0.00	0.00
7,100.0	12.43	271.74	6,944.7	43.7	-1,440.4	1,440.7	0.00	0.00	0.00
7,200.0	12.43	271.74	7,042.3	44.3	-1,461.9	1,462.2	0.00	0.00	0.00
7,300.0	12.43	271.74	7,140.0	45.0	-1,483.4	1,483.7	0.00	0.00	0.00
7,400.0	12.43	271.74	7,237.6	45.6	-1,504.9	1,505.3	0.00	0.00	0.00
7,500.0	12.43	271.74	7,335.3	46.3	-1,526.4	1,526.8	0.00	0.00	0.00
7,600.0	12.43	271.74	7,433.0	46.9	-1,548.0	1,548.3	0.00	0.00	0.00
7,700.0	12.43	271.74	7,530.6	47.6	-1,569.5	1,569.8	0.00	0.00	0.00
7,800.0	12.43	271.74	7,628.3	48.2	-1,591.0	1,591.4	0.00	0.00	0.00
Drop 3° /100'									
7,903.0	12.43	271.74	7,728.8	48.9	-1,613.1	1,613.5	0.00	0.00	0.00
8,000.0	9.52	271.74	7,824.1	49.5	-1,631.6	1,632.0	3.00	-3.00	0.00
8,100.0	6.52	271.74	7,923.1	49.9	-1,645.6	1,645.9	3.00	-3.00	0.00
8,200.0	3.52	271.74	8,022.7	50.2	-1,654.3	1,654.7	3.00	-3.00	0.00
8,300.0	0.52	271.74	8,122.6	50.3	-1,657.8	1,658.2	3.00	-3.00	0.00
EOD @ Vertical / Build 1.5° / 100' - Ohio Creek									
8,317.4	0.00	0.00	8,140.0	50.3	-1,657.9	1,658.3	3.00	-3.00	507.47
8,400.0	1.24	250.00	8,222.6	50.0	-1,658.8	1,659.1	1.50	1.50	-133.16
EOB @ 1.47° Inc. / 250.00° Azm									
8,415.6	1.47	250.00	8,238.2	49.8	-1,659.1	1,659.5	1.50	1.50	0.00
8,500.0	1.47	250.00	8,322.6	49.1	-1,661.1	1,661.5	0.00	0.00	0.00
8,600.0	1.47	250.00	8,422.5	48.2	-1,663.6	1,663.9	0.00	0.00	0.00
8,700.0	1.47	250.00	8,522.5	47.3	-1,666.0	1,666.3	0.00	0.00	0.00
Williams Fork									
8,708.5	1.47	250.00	8,531.0	47.3	-1,666.2	1,666.5	0.00	0.00	0.00
TOG									
8,758.5	1.47	250.00	8,581.0	46.8	-1,667.4	1,667.7	0.00	0.00	0.00

Database:	EDM 5000.1 Single User Db	Local Co-ordinate Reference:	Well ELU J14 FED 14B-14 496 - Slot 14B-14
Company:	Caerus Oil & Gas	TVD Reference:	RKB @ 7932.0usft (H&P #330)
Project:	Rio Blanco County, CO	MD Reference:	RKB @ 7932.0usft (H&P #330)
Site:	ELU J14 496 Pad	North Reference:	True
Well:	ELU J14 FED 14B-14 496	Survey Calculation Method:	Minimum Curvature
Wellbore:	Wellbore #1		
Design:	Design #1		

Planned Survey									
Measured Depth (usft)	Inclination (°)	Azimuth (°)	Vertical Depth (usft)	+N/-S (usft)	+E/-W (usft)	Vertical Section (usft)	Dogleg Rate (°/100usft)	Build Rate (°/100usft)	Turn Rate (°/100usft)
8,800.0	1.47	250.00	8,622.5	46.5	-1,668.4	1,668.7	0.00	0.00	0.00
8,900.0	1.47	250.00	8,722.4	45.6	-1,670.8	1,671.1	0.00	0.00	0.00
9,000.0	1.47	250.00	8,822.4	44.7	-1,673.2	1,673.6	0.00	0.00	0.00
9,100.0	1.47	250.00	8,922.4	43.8	-1,675.6	1,676.0	0.00	0.00	0.00
9,200.0	1.47	250.00	9,022.3	42.9	-1,678.0	1,678.4	0.00	0.00	0.00
9,300.0	1.47	250.00	9,122.3	42.1	-1,680.5	1,680.8	0.00	0.00	0.00
9,400.0	1.47	250.00	9,222.3	41.2	-1,682.9	1,683.2	0.00	0.00	0.00
9,500.0	1.47	250.00	9,322.2	40.3	-1,685.3	1,685.6	0.00	0.00	0.00
9,600.0	1.47	250.00	9,422.2	39.4	-1,687.7	1,688.0	0.00	0.00	0.00
9,700.0	1.47	250.00	9,522.2	38.5	-1,690.1	1,690.4	0.00	0.00	0.00
9,800.0	1.47	250.00	9,622.1	37.7	-1,692.5	1,692.8	0.00	0.00	0.00
9,900.0	1.47	250.00	9,722.1	36.8	-1,695.0	1,695.2	0.00	0.00	0.00
10,000.0	1.47	250.00	9,822.1	35.9	-1,697.4	1,697.6	0.00	0.00	0.00
10,100.0	1.47	250.00	9,922.0	35.0	-1,699.8	1,700.0	0.00	0.00	0.00
10,200.0	1.47	250.00	10,022.0	34.2	-1,702.2	1,702.4	0.00	0.00	0.00
10,300.0	1.47	250.00	10,122.0	33.3	-1,704.6	1,704.8	0.00	0.00	0.00
10,400.0	1.47	250.00	10,221.9	32.4	-1,707.0	1,707.3	0.00	0.00	0.00
10,500.0	1.47	250.00	10,321.9	31.5	-1,709.4	1,709.7	0.00	0.00	0.00
10,600.0	1.47	250.00	10,421.9	30.6	-1,711.9	1,712.1	0.00	0.00	0.00
10,700.0	1.47	250.00	10,521.8	29.8	-1,714.3	1,714.5	0.00	0.00	0.00
10,800.0	1.47	250.00	10,621.8	28.9	-1,716.7	1,716.9	0.00	0.00	0.00
10,900.0	1.47	250.00	10,721.8	28.0	-1,719.1	1,719.3	0.00	0.00	0.00
11,000.0	1.47	250.00	10,821.7	27.1	-1,721.5	1,721.7	0.00	0.00	0.00
11,100.0	1.47	250.00	10,921.7	26.2	-1,723.9	1,724.1	0.00	0.00	0.00
11,200.0	1.47	250.00	11,021.7	25.4	-1,726.4	1,726.5	0.00	0.00	0.00
Cameo									
11,233.3	1.47	250.00	11,055.0	25.1	-1,727.2	1,727.3	0.00	0.00	0.00
11,300.0	1.47	250.00	11,121.6	24.5	-1,728.8	1,728.9	0.00	0.00	0.00
11,400.0	1.47	250.00	11,221.6	23.6	-1,731.2	1,731.3	0.00	0.00	0.00
11,500.0	1.47	250.00	11,321.6	22.7	-1,733.6	1,733.7	0.00	0.00	0.00
11,600.0	1.47	250.00	11,421.5	21.8	-1,736.0	1,736.1	0.00	0.00	0.00
11,700.0	1.47	250.00	11,521.5	21.0	-1,738.4	1,738.6	0.00	0.00	0.00
11,800.0	1.47	250.00	11,621.5	20.1	-1,740.8	1,741.0	0.00	0.00	0.00
11,900.0	1.47	250.00	11,721.4	19.2	-1,743.3	1,743.4	0.00	0.00	0.00
12,000.0	1.47	250.00	11,821.4	18.3	-1,745.7	1,745.8	0.00	0.00	0.00
Rollins									
12,056.6	1.47	250.00	11,878.0	17.8	-1,747.0	1,747.1	0.00	0.00	0.00
12,100.0	1.47	250.00	11,921.4	17.4	-1,748.1	1,748.2	0.00	0.00	0.00
12,200.0	1.47	250.00	12,021.3	16.6	-1,750.5	1,750.6	0.00	0.00	0.00
TD @ 12256.7' MD / 12078.0' TVD									
12,256.7	1.47	250.00	12,078.0	16.1	-1,751.9	1,752.0	0.00	0.00	0.00

Database:	EDM 5000.1 Single User Db	Local Co-ordinate Reference:	Well ELU J14 FED 14B-14 496 - Slot 14B-14
Company:	Caerus Oil & Gas	TVD Reference:	RKB @ 7932.0usft (H&P #330)
Project:	Rio Blanco County, CO	MD Reference:	RKB @ 7932.0usft (H&P #330)
Site:	ELU J14 496 Pad	North Reference:	True
Well:	ELU J14 FED 14B-14 496	Survey Calculation Method:	Minimum Curvature
Wellbore:	Wellbore #1		
Design:	Design #1		

Design Targets

Target Name

- hit/miss target	Dip Angle	Dip Dir.	TVD	+N/-S	+E/-W	Northing	Easting	Latitude	Longitude
- Shape	(°)	(°)	(usft)	(usft)	(usft)	(usft)	(usft)		
14B-14 - OHCR	0.00	0.00	8,140.0	50.3	-1,657.9	14,429,959.69	2,444,413.63	39.700926	-108.141831
- plan hits target center									
- Point									
14B-14 - PBHL	0.00	0.00	12,078.0	16.1	-1,751.9	14,429,922.50	2,444,320.80	39.700832	-108.142165
- plan hits target center									
- Ellipse (radii L100.0 W50.0 on 250.00 azi)									

Formations

Measured Depth	Vertical Depth	Name	Lithology	Dip	Dip Direction
(usft)	(usft)			(°)	(°)
3,278.7	3,213.0	Wasatch			
5,736.3	5,613.0	Wasatch G			
6,362.0	6,224.0	Fort Union			
8,317.4	8,140.0	Ohio Creek			
8,708.5	8,531.0	Williams Fork			
8,758.5	8,581.0	TOG			
11,233.3	11,055.0	Cameo			
12,056.6	11,878.0	Rollins			

Plan Annotations

Measured Depth	Vertical Depth	Local Coordinates		Comment
(usft)	(usft)	+N/-S (usft)	+E/-W (usft)	
200.0	200.0	0.0	0.0	Build 3° / 100'
614.4	611.2	1.4	-44.8	EOB @ 12.43° Inc. / 271.74° Azm
7,903.0	7,728.8	48.9	-1,613.1	Drop 3° /100'
8,317.4	8,140.0	50.3	-1,657.9	EOD @ Vertical / Build 1.5° / 100'
8,415.6	8,238.2	49.8	-1,659.1	EOB @ 1.47° Inc. / 250.00° Azm
12,256.7	12,078.0	16.1	-1,751.9	TD @ 12256.7' MD / 12078.0' TVD