



Pad Name: Almont-Dotsero 6 South Pad
Well Name: Dotsero 6
Ground Level: 4989.0
SHL Latitude: 40° 35' 55.536 N
SHL Longitude: 104° 35' 4.380 W

SECTION DETAILS

Sec	MD	Inc	Azi	TVD	+N/-S	+E/-W	Dleg	TFace	VSect	Target
1	0.0	0.00	0.00	0.0	0.0	0.0	0.00	0.00	0.0	
2	500.0	0.00	0.00	500.0	0.0	0.0	0.00	0.00	0.0	
3	1093.5	11.87	149.75	1089.3	-52.9	30.9	2.00	149.75	-25.6	
4	6167.5	11.87	149.75	6054.7	-954.6	556.6	0.00	0.00	-461.8	
5	6761.0	0.00	270.57	6644.0	-1007.5	587.5	2.00	180.00	-487.4	
6	7658.9	89.79	270.57	7217.0	-1001.9	16.7	10.00	0.00	80.2	Dotsero 6 LP
7	17043.0	89.79	270.57	7252.0	-909.0	-9367.0	0.00	0.00	9411.0	Dotsero 6 PBHL

DESIGN TARGET DETAILS

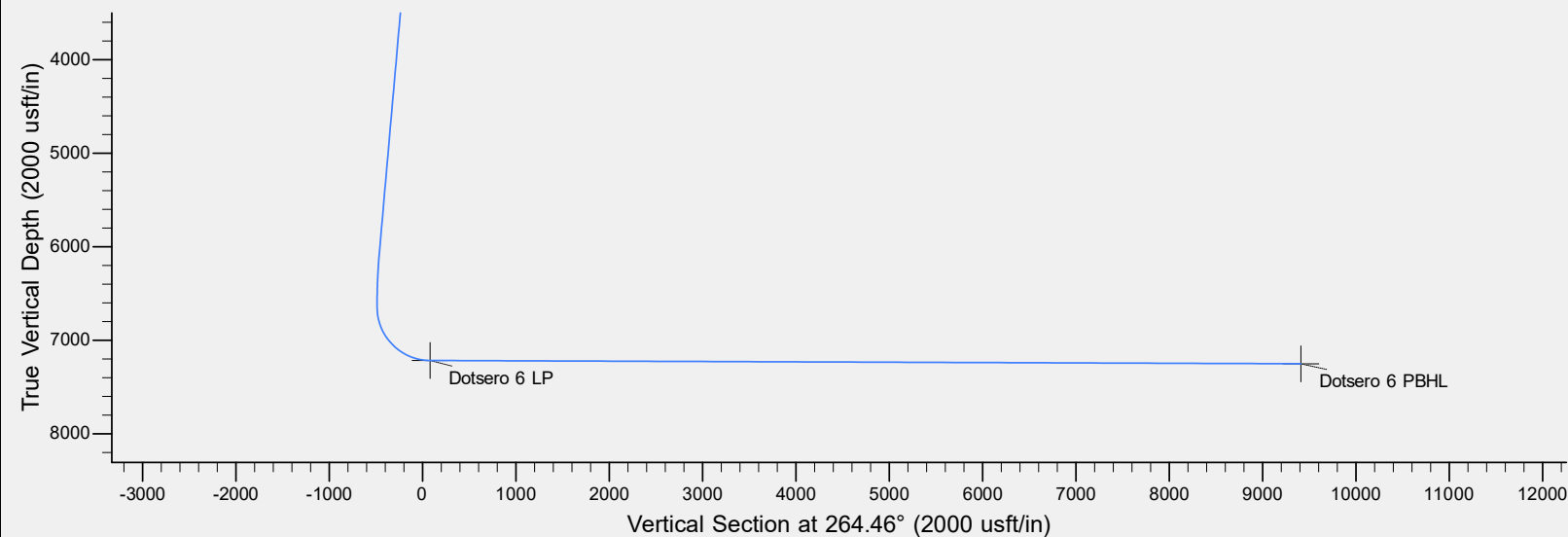
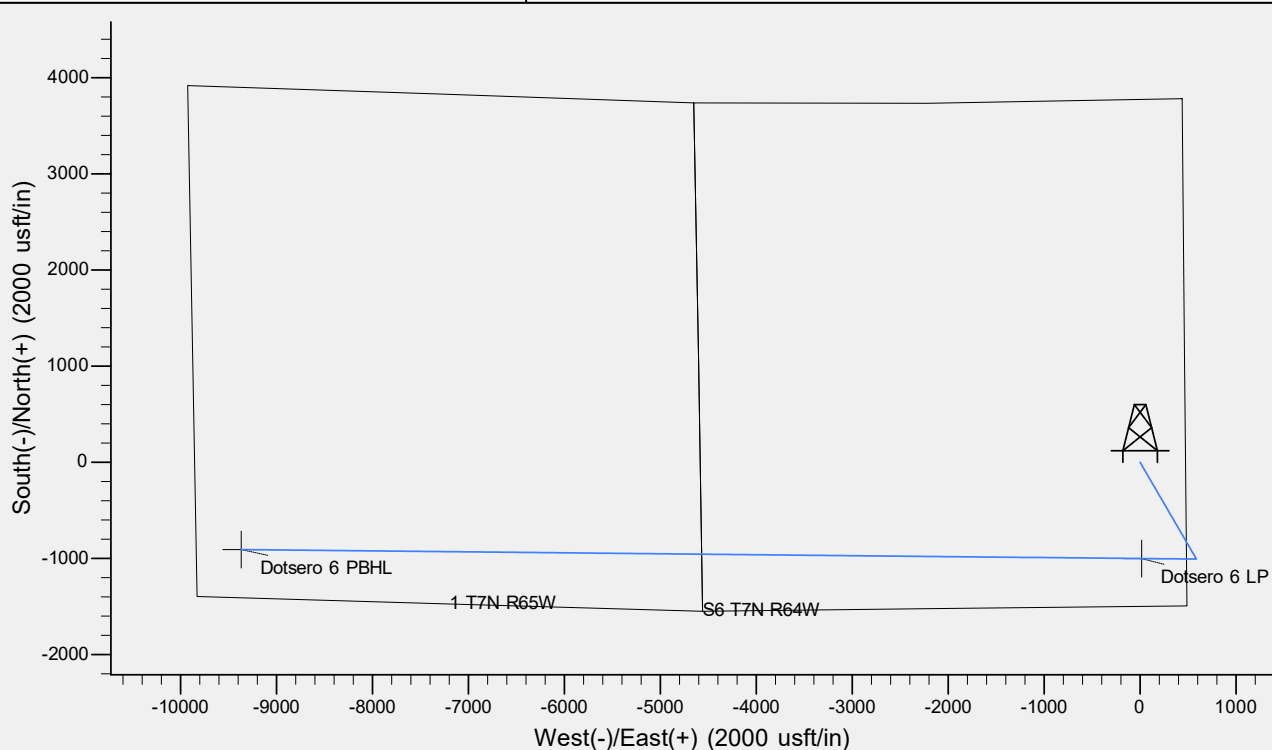
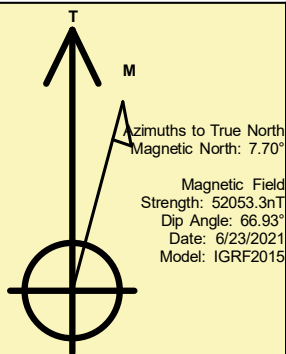
Name	TVD	+N/-S	+E/-W	Northing	Easting	Latitude	Longitude	Shape
Dotsero 6 LP	7217.0	-1001.9	16.7	1461280.32	3254237.26	40° 35' 45.636 N	104° 35' 4.164 W	Point
Dotsero 6 PBHL	- plan hits target center 7252.0	-909.0	-9367.0	1461276.31	3244853.19	40° 35' 46.536 N	104° 37' 5.808 W	Point
	- plan hits target center							

REFERENCE INFORMATION

Co-ordinate (N/E) Reference: Well Dotsero 6, True North
Vertical (TVD) Reference: KB @ 5012.0usft (Original Well Elev)
Section (VS) Reference: Slot - (0.0N, 0.0E)
Measured Depth Reference: KB @ 5012.0usft (Original Well Elev)
Calculation Method: Minimum Curvature

CASING DETAILS

No casing data is available



Bayswater Exploration & Production, LLC

DJ Basin

Almont-Dotsero 6 South Pad

Dotsero 6

Wellbore #1

Plan: Design #1

Standard Planning Report

24 June, 2021

Bayswater Exploration & Production LLC

Planning Report

Database:	edm	Local Co-ordinate Reference:	Well Dotsero 6
Company:	Bayswater Exploration & Production, LLC	TVD Reference:	KB @ 5012.0usft (Original Well Elev)
Project:	DJ Basin	MD Reference:	KB @ 5012.0usft (Original Well Elev)
Site:	Almont-Dotsero 6 South Pad	North Reference:	True
Well:	Dotsero 6	Survey Calculation Method:	Minimum Curvature
Wellbore:	Wellbore #1		
Design:	Design #1		

Project	DJ Basin, DJ Basin		
Map System:	US State Plane 1983	System Datum:	Mean Sea Level
Geo Datum:	North American Datum 1983		
Map Zone:	Colorado Northern Zone		

Site		Almont-Dotsero 6 South Pad			
Site Position:		Northing:	1,462,405.83 usft	Latitude:	40° 35' 56.760 N
From:	Lat/Long	Easting:	3,254,208.98 usft	Longitude:	104° 35' 4.380 W
Position Uncertainty:	0.0 usft	Slot Radius:	13-3/16 "	Grid Convergence:	0.59 °

Well	Dotsero 6					
Well Position	+N/-S	-123.9 usft	Northing:	1,462,281.96 usft	Latitude:	40° 35' 55.536 N
	+E/-W	0.0 usft	Easting:	3,254,210.26 usft	Longitude:	104° 35' 4.380 W
Position Uncertainty		0.0 usft	Wellhead Elevation:		Ground Level:	4,989.0 usft

Wellbore	Wellbore #1				
Magnetics	Model Name	Sample Date	Declination (°)	Dip Angle (°)	Field Strength (nT)
	IGRF2015	6/23/2021	7.70	66.93	52,053.33206678

Design	Design #1			
Audit Notes:				
Version:	Phase:	PLAN	Tie On Depth:	0.0
Vertical Section:	Depth From (TVD) (usft)	+N/-S (usft)	+E/-W (usft)	Direction (°)
	0.0	0.0	0.0	264.46

Plan Survey Tool Program	Date	6/24/2021		
Depth From (usft)	Depth To (usft)	Survey (Wellbore)	Tool Name	Remarks
1	0.0	17,043.0	Design #1 (Wellbore #1)	MWD
				OWSG MWD - Standard

Plan Sections										
Measured Depth (usft)	Inclination (°)	Azimuth (°)	Vertical Depth (usft)	+N/-S (usft)	+E/-W (usft)	Dogleg Rate (°/100usft)	Build Rate (°/100usft)	Turn Rate (°/100usft)	TFO (°)	Target
0.0	0.00	0.00	0.0	0.0	0.0	0.00	0.00	0.00	0.00	
500.0	0.00	0.00	500.0	0.0	0.0	0.00	0.00	0.00	0.00	
1,093.5	11.87	149.75	1,089.3	-52.9	30.9	2.00	2.00	0.00	149.75	
6,167.5	11.87	149.75	6,054.7	-954.6	556.6	0.00	0.00	0.00	0.00	
6,761.0	0.00	270.57	6,644.0	-1,007.5	587.5	2.00	-2.00	0.00	180.00	
7,658.9	89.79	270.57	7,217.0	-1,001.9	16.7	10.00	10.00	0.00	0.00	Dotsero 6 LP
17,043.0	89.79	270.57	7,252.0	-909.0	-9,367.0	0.00	0.00	0.00	0.00	Dotsero 6 PBHL

Bayswater Exploration & Production LLC

Planning Report

Database:	edm	Local Co-ordinate Reference:	Well Dotsero 6
Company:	Bayswater Exploration & Production, LLC	TVD Reference:	KB @ 5012.0usft (Original Well Elev)
Project:	DJ Basin	MD Reference:	KB @ 5012.0usft (Original Well Elev)
Site:	Almont-Dotsero 6 South Pad	North Reference:	True
Well:	Dotsero 6	Survey Calculation Method:	Minimum Curvature
Wellbore:	Wellbore #1		
Design:	Design #1		

Planned Survey									
Measured Depth (usft)	Inclination (°)	Azimuth (°)	Vertical Depth (usft)	+N/-S (usft)	+E/-W (usft)	Vertical Section (usft)	Dogleg Rate (°/100usft)	Build Rate (°/100usft)	Turn Rate (°/100usft)
0.0	0.00	0.00	0.0	0.0	0.0	0.0	0.00	0.00	0.00
100.0	0.00	0.00	100.0	0.0	0.0	0.0	0.00	0.00	0.00
200.0	0.00	0.00	200.0	0.0	0.0	0.0	0.00	0.00	0.00
300.0	0.00	0.00	300.0	0.0	0.0	0.0	0.00	0.00	0.00
400.0	0.00	0.00	400.0	0.0	0.0	0.0	0.00	0.00	0.00
500.0	0.00	0.00	500.0	0.0	0.0	0.0	0.00	0.00	0.00
600.0	2.00	149.75	600.0	-1.5	0.9	-0.7	2.00	2.00	0.00
700.0	4.00	149.75	699.8	-6.0	3.5	-2.9	2.00	2.00	0.00
800.0	6.00	149.75	799.5	-13.6	7.9	-6.6	2.00	2.00	0.00
900.0	8.00	149.75	898.7	-24.1	14.0	-11.7	2.00	2.00	0.00
1,000.0	10.00	149.75	997.5	-37.6	21.9	-18.2	2.00	2.00	0.00
1,093.5	11.87	149.75	1,089.3	-52.9	30.9	-25.6	2.00	2.00	0.00
1,100.0	11.87	149.75	1,095.6	-54.1	31.5	-26.2	0.00	0.00	0.00
1,200.0	11.87	149.75	1,193.5	-71.8	41.9	-34.8	0.00	0.00	0.00
1,300.0	11.87	149.75	1,291.3	-89.6	52.3	-43.4	0.00	0.00	0.00
1,400.0	11.87	149.75	1,389.2	-107.4	62.6	-51.9	0.00	0.00	0.00
1,500.0	11.87	149.75	1,487.1	-125.2	73.0	-60.5	0.00	0.00	0.00
1,600.0	11.87	149.75	1,584.9	-142.9	83.3	-69.1	0.00	0.00	0.00
1,700.0	11.87	149.75	1,682.8	-160.7	93.7	-77.7	0.00	0.00	0.00
1,800.0	11.87	149.75	1,780.7	-178.5	104.1	-86.3	0.00	0.00	0.00
1,900.0	11.87	149.75	1,878.5	-196.2	114.4	-94.9	0.00	0.00	0.00
2,000.0	11.87	149.75	1,976.4	-214.0	124.8	-103.5	0.00	0.00	0.00
2,100.0	11.87	149.75	2,074.2	-231.8	135.1	-112.1	0.00	0.00	0.00
2,200.0	11.87	149.75	2,172.1	-249.5	145.5	-120.7	0.00	0.00	0.00
2,300.0	11.87	149.75	2,270.0	-267.3	155.9	-129.3	0.00	0.00	0.00
2,400.0	11.87	149.75	2,367.8	-285.1	166.2	-137.9	0.00	0.00	0.00
2,500.0	11.87	149.75	2,465.7	-302.9	176.6	-146.5	0.00	0.00	0.00
2,600.0	11.87	149.75	2,563.5	-320.6	187.0	-155.1	0.00	0.00	0.00
2,700.0	11.87	149.75	2,661.4	-338.4	197.3	-163.7	0.00	0.00	0.00
2,800.0	11.87	149.75	2,759.3	-356.2	207.7	-172.3	0.00	0.00	0.00
2,900.0	11.87	149.75	2,857.1	-373.9	218.0	-180.9	0.00	0.00	0.00
3,000.0	11.87	149.75	2,955.0	-391.7	228.4	-189.5	0.00	0.00	0.00
3,100.0	11.87	149.75	3,052.9	-409.5	238.8	-198.1	0.00	0.00	0.00
3,200.0	11.87	149.75	3,150.7	-427.2	249.1	-206.7	0.00	0.00	0.00
3,300.0	11.87	149.75	3,248.6	-445.0	259.5	-215.3	0.00	0.00	0.00
3,400.0	11.87	149.75	3,346.4	-462.8	269.8	-223.9	0.00	0.00	0.00
3,500.0	11.87	149.75	3,444.3	-480.6	280.2	-232.5	0.00	0.00	0.00
3,600.0	11.87	149.75	3,542.2	-498.3	290.6	-241.1	0.00	0.00	0.00
3,700.0	11.87	149.75	3,640.0	-516.1	300.9	-249.7	0.00	0.00	0.00
3,800.0	11.87	149.75	3,737.9	-533.9	311.3	-258.3	0.00	0.00	0.00
3,900.0	11.87	149.75	3,835.7	-551.6	321.7	-266.9	0.00	0.00	0.00
4,000.0	11.87	149.75	3,933.6	-569.4	332.0	-275.5	0.00	0.00	0.00
4,100.0	11.87	149.75	4,031.5	-587.2	342.4	-284.1	0.00	0.00	0.00
4,200.0	11.87	149.75	4,129.3	-605.0	352.7	-292.7	0.00	0.00	0.00
4,300.0	11.87	149.75	4,227.2	-622.7	363.1	-301.2	0.00	0.00	0.00
4,400.0	11.87	149.75	4,325.1	-640.5	373.5	-309.8	0.00	0.00	0.00
4,500.0	11.87	149.75	4,422.9	-658.3	383.8	-318.4	0.00	0.00	0.00
4,600.0	11.87	149.75	4,520.8	-676.0	394.2	-327.0	0.00	0.00	0.00
4,700.0	11.87	149.75	4,618.6	-693.8	404.5	-335.6	0.00	0.00	0.00
4,800.0	11.87	149.75	4,716.5	-711.6	414.9	-344.2	0.00	0.00	0.00
4,900.0	11.87	149.75	4,814.4	-729.3	425.3	-352.8	0.00	0.00	0.00
5,000.0	11.87	149.75	4,912.2	-747.1	435.6	-361.4	0.00	0.00	0.00
5,100.0	11.87	149.75	5,010.1	-764.9	446.0	-370.0	0.00	0.00	0.00
5,200.0	11.87	149.75	5,107.9	-782.7	456.3	-378.6	0.00	0.00	0.00

Bayswater Exploration & Production LLC

Planning Report

Database:	edm	Local Co-ordinate Reference:	Well Dotsero 6
Company:	Bayswater Exploration & Production, LLC	TVD Reference:	KB @ 5012.0usft (Original Well Elev)
Project:	DJ Basin	MD Reference:	KB @ 5012.0usft (Original Well Elev)
Site:	Almont-Dotsero 6 South Pad	North Reference:	True
Well:	Dotsero 6	Survey Calculation Method:	Minimum Curvature
Wellbore:	Wellbore #1		
Design:	Design #1		

Planned Survey									
Measured Depth (usft)	Inclination (°)	Azimuth (°)	Vertical Depth (usft)	+N/-S (usft)	+E/-W (usft)	Vertical Section (usft)	Dogleg Rate (°/100usft)	Build Rate (°/100usft)	Turn Rate (°/100usft)
5,300.0	11.87	149.75	5,205.8	-800.4	466.7	-387.2	0.00	0.00	0.00
5,400.0	11.87	149.75	5,303.7	-818.2	477.1	-395.8	0.00	0.00	0.00
5,500.0	11.87	149.75	5,401.5	-836.0	487.4	-404.4	0.00	0.00	0.00
5,600.0	11.87	149.75	5,499.4	-853.7	497.8	-413.0	0.00	0.00	0.00
5,700.0	11.87	149.75	5,597.3	-871.5	508.2	-421.6	0.00	0.00	0.00
5,800.0	11.87	149.75	5,695.1	-889.3	518.5	-430.2	0.00	0.00	0.00
5,900.0	11.87	149.75	5,793.0	-907.0	528.9	-438.8	0.00	0.00	0.00
6,000.0	11.87	149.75	5,890.8	-924.8	539.2	-447.4	0.00	0.00	0.00
6,100.0	11.87	149.75	5,988.7	-942.6	549.6	-456.0	0.00	0.00	0.00
6,167.5	11.87	149.75	6,054.7	-954.6	556.6	-461.8	0.00	0.00	0.00
6,200.0	11.22	149.75	6,086.6	-960.2	559.9	-464.5	2.00	-2.00	0.00
6,300.0	9.22	149.75	6,185.0	-975.5	568.8	-471.9	2.00	-2.00	0.00
6,400.0	7.22	149.75	6,284.0	-987.9	576.0	-477.9	2.00	-2.00	0.00
6,500.0	5.22	149.75	6,383.4	-997.2	581.5	-482.4	2.00	-2.00	0.00
6,600.0	3.22	149.75	6,483.1	-1,003.6	585.2	-485.5	2.00	-2.00	0.00
6,700.0	1.22	149.75	6,583.0	-1,006.9	587.1	-487.1	2.00	-2.00	0.00
6,761.0	0.00	270.57	6,644.0	-1,007.5	587.5	-487.4	2.00	-2.00	0.00
6,800.0	3.90	270.57	6,683.0	-1,007.5	586.1	-486.1	10.00	10.00	0.00
6,900.0	13.90	270.57	6,781.7	-1,007.3	570.7	-470.7	10.00	10.00	0.00
7,000.0	23.90	270.57	6,876.1	-1,007.0	538.3	-438.6	10.00	10.00	0.00
7,100.0	33.90	270.57	6,963.6	-1,006.5	490.1	-390.6	10.00	10.00	0.00
7,200.0	43.90	270.57	7,041.3	-1,005.9	427.4	-328.2	10.00	10.00	0.00
7,300.0	53.90	270.57	7,107.0	-1,005.2	352.1	-253.4	10.00	10.00	0.00
7,400.0	63.90	270.57	7,158.6	-1,004.3	266.6	-168.4	10.00	10.00	0.00
7,500.0	73.90	270.57	7,194.5	-1,003.4	173.4	-75.7	10.00	10.00	0.00
7,600.0	83.90	270.57	7,213.8	-1,002.4	75.4	21.7	10.00	10.00	0.00
7,658.9	89.79	270.57	7,217.0	-1,001.9	16.7	80.2	10.00	10.00	0.00
7,700.0	89.79	270.57	7,217.2	-1,001.5	-24.4	121.1	0.00	0.00	0.00
7,800.0	89.79	270.57	7,217.5	-1,000.5	-124.4	220.5	0.00	0.00	0.00
7,900.0	89.79	270.57	7,217.9	-999.5	-224.4	319.9	0.00	0.00	0.00
8,000.0	89.79	270.57	7,218.3	-998.5	-324.4	419.4	0.00	0.00	0.00
8,100.0	89.79	270.57	7,218.6	-997.5	-424.4	518.8	0.00	0.00	0.00
8,200.0	89.79	270.57	7,219.0	-996.5	-524.4	618.2	0.00	0.00	0.00
8,300.0	89.79	270.57	7,219.4	-995.5	-624.4	717.6	0.00	0.00	0.00
8,400.0	89.79	270.57	7,219.8	-994.5	-724.4	817.1	0.00	0.00	0.00
8,500.0	89.79	270.57	7,220.1	-993.5	-824.4	916.5	0.00	0.00	0.00
8,600.0	89.79	270.57	7,220.5	-992.5	-924.4	1,015.9	0.00	0.00	0.00
8,700.0	89.79	270.57	7,220.9	-991.6	-1,024.4	1,115.4	0.00	0.00	0.00
8,800.0	89.79	270.57	7,221.3	-990.6	-1,124.4	1,214.8	0.00	0.00	0.00
8,900.0	89.79	270.57	7,221.6	-989.6	-1,224.4	1,314.2	0.00	0.00	0.00
9,000.0	89.79	270.57	7,222.0	-988.6	-1,324.4	1,413.7	0.00	0.00	0.00
9,100.0	89.79	270.57	7,222.4	-987.6	-1,424.4	1,513.1	0.00	0.00	0.00
9,200.0	89.79	270.57	7,222.7	-986.6	-1,524.4	1,612.5	0.00	0.00	0.00
9,300.0	89.79	270.57	7,223.1	-985.6	-1,624.4	1,712.0	0.00	0.00	0.00
9,400.0	89.79	270.57	7,223.5	-984.6	-1,724.3	1,811.4	0.00	0.00	0.00
9,500.0	89.79	270.57	7,223.9	-983.6	-1,824.3	1,910.8	0.00	0.00	0.00
9,600.0	89.79	270.57	7,224.2	-982.6	-1,924.3	2,010.3	0.00	0.00	0.00
9,700.0	89.79	270.57	7,224.6	-981.7	-2,024.3	2,109.7	0.00	0.00	0.00
9,800.0	89.79	270.57	7,225.0	-980.7	-2,124.3	2,209.1	0.00	0.00	0.00
9,900.0	89.79	270.57	7,225.4	-979.7	-2,224.3	2,308.5	0.00	0.00	0.00
10,000.0	89.79	270.57	7,225.7	-978.7	-2,324.3	2,408.0	0.00	0.00	0.00
10,100.0	89.79	270.57	7,226.1	-977.7	-2,424.3	2,507.4	0.00	0.00	0.00
10,200.0	89.79	270.57	7,226.5	-976.7	-2,524.3	2,606.8	0.00	0.00	0.00
10,300.0	89.79	270.57	7,226.9	-975.7	-2,624.3	2,706.3	0.00	0.00	0.00

Bayswater Exploration & Production LLC

Planning Report

Database:	edm	Local Co-ordinate Reference:	Well Dotsero 6
Company:	Bayswater Exploration & Production, LLC	TVD Reference:	KB @ 5012.0usft (Original Well Elev)
Project:	DJ Basin	MD Reference:	KB @ 5012.0usft (Original Well Elev)
Site:	Almont-Dotsero 6 South Pad	North Reference:	True
Well:	Dotsero 6	Survey Calculation Method:	Minimum Curvature
Wellbore:	Wellbore #1		
Design:	Design #1		

Planned Survey									
Measured Depth (usft)	Inclination (°)	Azimuth (°)	Vertical Depth (usft)	+N/-S (usft)	+E/-W (usft)	Vertical Section (usft)	Dogleg Rate (°/100usft)	Build Rate (°/100usft)	Turn Rate (°/100usft)
10,400.0	89.79	270.57	7,227.2	-974.7	-2,724.3	2,805.7	0.00	0.00	0.00
10,500.0	89.79	270.57	7,227.6	-973.7	-2,824.3	2,905.1	0.00	0.00	0.00
10,600.0	89.79	270.57	7,228.0	-972.8	-2,924.3	3,004.6	0.00	0.00	0.00
10,700.0	89.79	270.57	7,228.3	-971.8	-3,024.3	3,104.0	0.00	0.00	0.00
10,800.0	89.79	270.57	7,228.7	-970.8	-3,124.3	3,203.4	0.00	0.00	0.00
10,900.0	89.79	270.57	7,229.1	-969.8	-3,224.3	3,302.9	0.00	0.00	0.00
11,000.0	89.79	270.57	7,229.5	-968.8	-3,324.3	3,402.3	0.00	0.00	0.00
11,100.0	89.79	270.57	7,229.8	-967.8	-3,424.3	3,501.7	0.00	0.00	0.00
11,200.0	89.79	270.57	7,230.2	-966.8	-3,524.2	3,601.2	0.00	0.00	0.00
11,300.0	89.79	270.57	7,230.6	-965.8	-3,624.2	3,700.6	0.00	0.00	0.00
11,400.0	89.79	270.57	7,231.0	-964.8	-3,724.2	3,800.0	0.00	0.00	0.00
11,500.0	89.79	270.57	7,231.3	-963.8	-3,824.2	3,899.4	0.00	0.00	0.00
11,600.0	89.79	270.57	7,231.7	-962.9	-3,924.2	3,998.9	0.00	0.00	0.00
11,700.0	89.79	270.57	7,232.1	-961.9	-4,024.2	4,098.3	0.00	0.00	0.00
11,800.0	89.79	270.57	7,232.4	-960.9	-4,124.2	4,197.7	0.00	0.00	0.00
11,900.0	89.79	270.57	7,232.8	-959.9	-4,224.2	4,297.2	0.00	0.00	0.00
12,000.0	89.79	270.57	7,233.2	-958.9	-4,324.2	4,396.6	0.00	0.00	0.00
12,100.0	89.79	270.57	7,233.6	-957.9	-4,424.2	4,496.0	0.00	0.00	0.00
12,200.0	89.79	270.57	7,233.9	-956.9	-4,524.2	4,595.5	0.00	0.00	0.00
12,300.0	89.79	270.57	7,234.3	-955.9	-4,624.2	4,694.9	0.00	0.00	0.00
12,400.0	89.79	270.57	7,234.7	-954.9	-4,724.2	4,794.3	0.00	0.00	0.00
12,500.0	89.79	270.57	7,235.1	-954.0	-4,824.2	4,893.8	0.00	0.00	0.00
12,600.0	89.79	270.57	7,235.4	-953.0	-4,924.2	4,993.2	0.00	0.00	0.00
12,700.0	89.79	270.57	7,235.8	-952.0	-5,024.2	5,092.6	0.00	0.00	0.00
12,800.0	89.79	270.57	7,236.2	-951.0	-5,124.2	5,192.1	0.00	0.00	0.00
12,900.0	89.79	270.57	7,236.5	-950.0	-5,224.2	5,291.5	0.00	0.00	0.00
13,000.0	89.79	270.57	7,236.9	-949.0	-5,324.1	5,390.9	0.00	0.00	0.00
13,100.0	89.79	270.57	7,237.3	-948.0	-5,424.1	5,490.3	0.00	0.00	0.00
13,200.0	89.79	270.57	7,237.7	-947.0	-5,524.1	5,589.8	0.00	0.00	0.00
13,300.0	89.79	270.57	7,238.0	-946.0	-5,624.1	5,689.2	0.00	0.00	0.00
13,400.0	89.79	270.57	7,238.4	-945.0	-5,724.1	5,788.6	0.00	0.00	0.00
13,500.0	89.79	270.57	7,238.8	-944.1	-5,824.1	5,888.1	0.00	0.00	0.00
13,600.0	89.79	270.57	7,239.2	-943.1	-5,924.1	5,987.5	0.00	0.00	0.00
13,700.0	89.79	270.57	7,239.5	-942.1	-6,024.1	6,086.9	0.00	0.00	0.00
13,800.0	89.79	270.57	7,239.9	-941.1	-6,124.1	6,186.4	0.00	0.00	0.00
13,900.0	89.79	270.57	7,240.3	-940.1	-6,224.1	6,285.8	0.00	0.00	0.00
14,000.0	89.79	270.57	7,240.7	-939.1	-6,324.1	6,385.2	0.00	0.00	0.00
14,100.0	89.79	270.57	7,241.0	-938.1	-6,424.1	6,484.7	0.00	0.00	0.00
14,200.0	89.79	270.57	7,241.4	-937.1	-6,524.1	6,584.1	0.00	0.00	0.00
14,300.0	89.79	270.57	7,241.8	-936.1	-6,624.1	6,683.5	0.00	0.00	0.00
14,400.0	89.79	270.57	7,242.1	-935.2	-6,724.1	6,783.0	0.00	0.00	0.00
14,500.0	89.79	270.57	7,242.5	-934.2	-6,824.1	6,882.4	0.00	0.00	0.00
14,600.0	89.79	270.57	7,242.9	-933.2	-6,924.1	6,981.8	0.00	0.00	0.00
14,700.0	89.79	270.57	7,243.3	-932.2	-7,024.1	7,081.2	0.00	0.00	0.00
14,800.0	89.79	270.57	7,243.6	-931.2	-7,124.0	7,180.7	0.00	0.00	0.00
14,900.0	89.79	270.57	7,244.0	-930.2	-7,224.0	7,280.1	0.00	0.00	0.00
15,000.0	89.79	270.57	7,244.4	-929.2	-7,324.0	7,379.5	0.00	0.00	0.00
15,100.0	89.79	270.57	7,244.8	-928.2	-7,424.0	7,479.0	0.00	0.00	0.00
15,200.0	89.79	270.57	7,245.1	-927.2	-7,524.0	7,578.4	0.00	0.00	0.00
15,300.0	89.79	270.57	7,245.5	-926.2	-7,624.0	7,677.8	0.00	0.00	0.00
15,400.0	89.79	270.57	7,245.9	-925.3	-7,724.0	7,777.3	0.00	0.00	0.00
15,500.0	89.79	270.57	7,246.2	-924.3	-7,824.0	7,876.7	0.00	0.00	0.00
15,600.0	89.79	270.57	7,246.6	-923.3	-7,924.0	7,976.1	0.00	0.00	0.00
15,700.0	89.79	270.57	7,247.0	-922.3	-8,024.0	8,075.6	0.00	0.00	0.00

Bayswater Exploration & Production LLC

Planning Report

Database:	edm	Local Co-ordinate Reference:	Well Dotsero 6
Company:	Bayswater Exploration & Production, LLC	TVD Reference:	KB @ 5012.0usft (Original Well Elev)
Project:	DJ Basin	MD Reference:	KB @ 5012.0usft (Original Well Elev)
Site:	Almont-Dotsero 6 South Pad	North Reference:	True
Well:	Dotsero 6	Survey Calculation Method:	Minimum Curvature
Wellbore:	Wellbore #1		
Design:	Design #1		

Planned Survey										
Measured Depth (usft)	Inclination (°)	Azimuth (°)	Vertical Depth (usft)	+N/-S (usft)	+E/-W (usft)	Vertical Section (usft)	Dogleg Rate (°/100usft)	Build Rate (°/100usft)	Turn Rate (°/100usft)	
15,800.0	89.79	270.57	7,247.4	-921.3	-8,124.0	8,175.0	0.00	0.00	0.00	
15,900.0	89.79	270.57	7,247.7	-920.3	-8,224.0	8,274.4	0.00	0.00	0.00	
16,000.0	89.79	270.57	7,248.1	-919.3	-8,324.0	8,373.9	0.00	0.00	0.00	
16,100.0	89.79	270.57	7,248.5	-918.3	-8,424.0	8,473.3	0.00	0.00	0.00	
16,200.0	89.79	270.57	7,248.9	-917.3	-8,524.0	8,572.7	0.00	0.00	0.00	
16,300.0	89.79	270.57	7,249.2	-916.4	-8,624.0	8,672.1	0.00	0.00	0.00	
16,400.0	89.79	270.57	7,249.6	-915.4	-8,724.0	8,771.6	0.00	0.00	0.00	
16,500.0	89.79	270.57	7,250.0	-914.4	-8,823.9	8,871.0	0.00	0.00	0.00	
16,600.0	89.79	270.57	7,250.3	-913.4	-8,923.9	8,970.4	0.00	0.00	0.00	
16,700.0	89.79	270.57	7,250.7	-912.4	-9,023.9	9,069.9	0.00	0.00	0.00	
16,800.0	89.79	270.57	7,251.1	-911.4	-9,123.9	9,169.3	0.00	0.00	0.00	
16,900.0	89.79	270.57	7,251.5	-910.4	-9,223.9	9,268.7	0.00	0.00	0.00	
17,000.0	89.79	270.57	7,251.8	-909.4	-9,323.9	9,368.2	0.00	0.00	0.00	
17,043.0	89.79	270.57	7,252.0	-909.0	-9,367.0	9,411.0	0.00	0.00	0.00	
20" Casing										

Design Targets										
Target Name	Dip Angle (°)	Dip Dir. (°)	TVD (usft)	+N/-S (usft)	+E/-W (usft)	Northing (usft)	Easting (usft)	Latitude	Longitude	
- hit/miss target										
- Shape										
Dotsero 6 LP	0.00	0.00	7,217.0	-1,001.9	16.7	1,461,280.33	3,254,237.27	40° 35' 45.636 N	104° 35' 4.164 W	
- plan hits target center										
- Point										
Dotsero 6 PBHL	0.00	0.00	7,252.0	-909.0	-9,367.0	1,461,276.31	3,244,853.19	40° 35' 46.536 N	104° 37' 5.808 W	
- plan hits target center										
- Point										

Casing Points					
Measured Depth (usft)	Vertical Depth (usft)	Name	Casing Diameter (")	Hole Diameter (")	
17,043.0	7,252.0	20" Casing	20	24	