



Pad Name: Almont-Dotsero 6 South Pad
Well Name: Dotsero 4
Ground Level: 4989.0
SHL Latitude: 40° 35' 56.040 N
SHL Longitude: 104° 35' 4.380 W

SECTION DETAILS

Sec	MD	Inc	Azi	TVD	+N/-S	+E/-W	Dleg	TFace	VSect	Target
1	0.0	0.00	0.00	0.0	0.0	0.0	0.00	0.00	0.0	
2	500.0	0.00	0.00	500.0	0.0	0.0	0.00	0.00	0.0	
3	942.7	8.85	38.98	940.9	26.5	21.5	2.00	38.98	-19.1	
4	6359.4	8.85	38.98	6293.1	674.6	545.9	0.00	0.00	-486.8	
5	6802.1	0.00	270.57	6734.0	701.1	567.4	2.00	180.00	-505.9	
6	7699.4	89.73	270.57	7307.0	706.8	-2.8	10.00	0.00	62.7	Dotsero 4 LP
7	17096.8	89.73	270.57	7352.0	799.6	-9399.6	0.00	0.00	9433.6	Dotsero 4 PBHL

DESIGN TARGET DETAILS

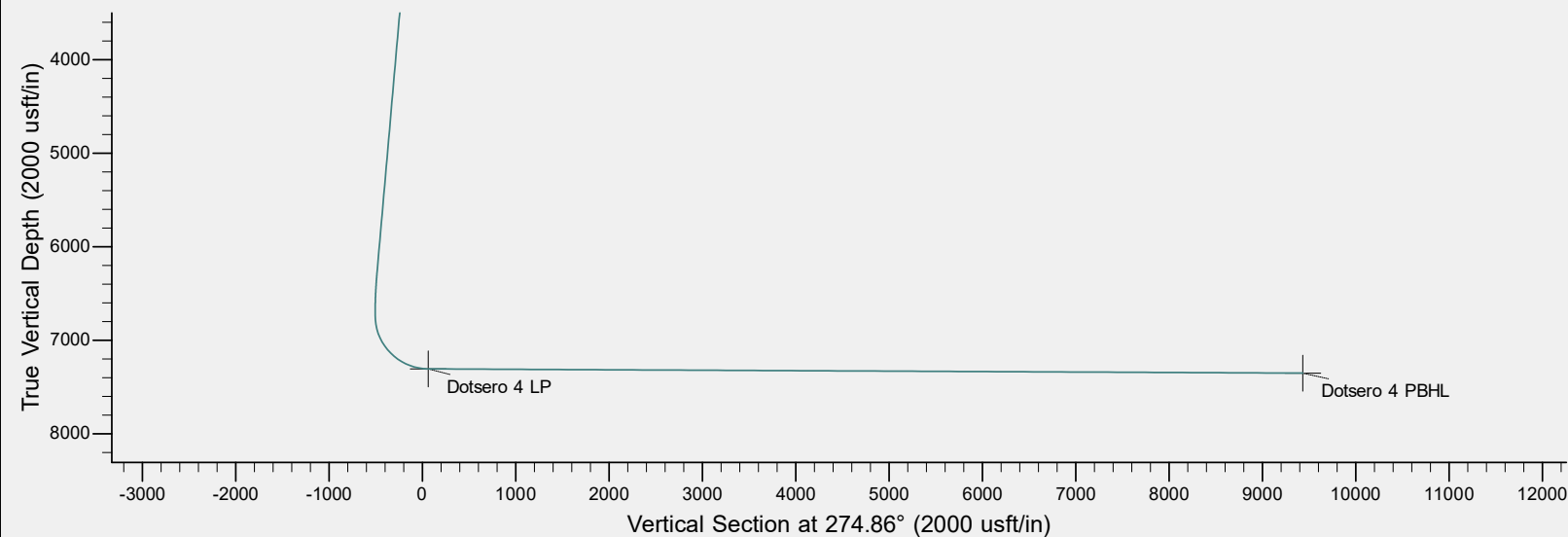
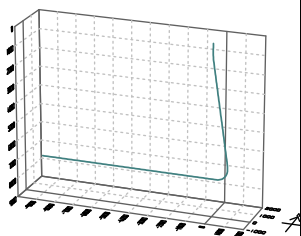
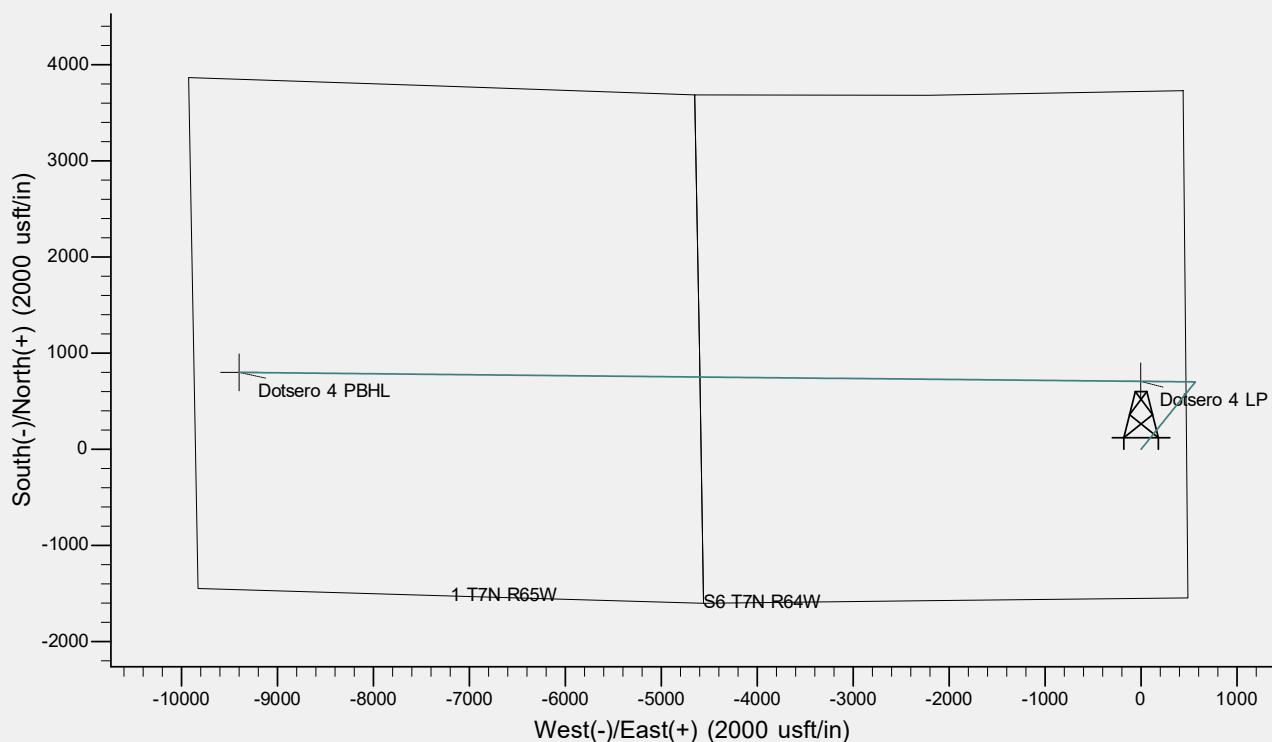
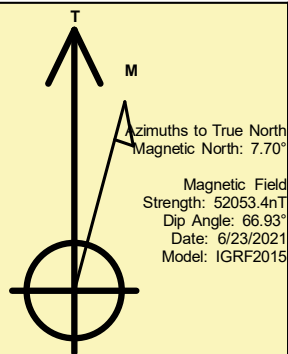
Name	TVD	+N/-S	+E/-W	Northing	Easting	Latitude	Longitude	Shape
Dotsero 4 LP	7307.0	706.8	-2.8	1463039.67	3254199.66	40° 36' 3.024 N	104° 35' 4.416 W	Point
Dotsero 4 PBHL	- plan hits target center 7352.0	799.6	-9399.6	1463035.53	3244802.37	40° 36' 3.924 N	104° 37' 6.240 W	Point
	- plan hits target center							

REFERENCE INFORMATION

Co-ordinate (N/E) Reference: Well Dotsero 4, True North
Vertical (TVD) Reference: KB @ 5012.0usft (Original Well Elev)
Section (VS) Reference: Slot - (0.0N, 0.0E)
Measured Depth Reference: KB @ 5012.0usft (Original Well Elev)
Calculation Method: Minimum Curvature

CASING DETAILS

No casing data is available



Bayswater Exploration & Production, LLC

DJ Basin

Almont-Dotsero 6 South Pad

Dotsero 4

Wellbore #1

Plan: Design #1

Standard Planning Report

24 June, 2021

Bayswater Exploration & Production LLC

Planning Report

Database:	edm	Local Co-ordinate Reference:	Well Dotsero 4
Company:	Bayswater Exploration & Production, LLC	TVD Reference:	KB @ 5012.0usft (Original Well Elev)
Project:	DJ Basin	MD Reference:	KB @ 5012.0usft (Original Well Elev)
Site:	Almont-Dotsero 6 South Pad	North Reference:	True
Well:	Dotsero 4	Survey Calculation Method:	Minimum Curvature
Wellbore:	Wellbore #1		
Design:	Design #1		

Project	DJ Basin, DJ Basin		
Map System:	US State Plane 1983	System Datum:	Mean Sea Level
Geo Datum:	North American Datum 1983		
Map Zone:	Colorado Northern Zone		

Site		Almont-Dotsero 6 South Pad			
Site Position:		Northing:	1,462,405.83 usft	Latitude:	40° 35' 56.760 N
From:	Lat/Long	Easting:	3,254,208.98 usft	Longitude:	104° 35' 4.380 W
Position Uncertainty:	0.0 usft	Slot Radius:	13-3/16 "	Grid Convergence:	0.59 °

Well	Dotsero 4					
Well Position	+N/-S	-72.9 usft	Northing:	1,462,332.96 usft	Latitude:	40° 35' 56.040 N
	+E/-W	0.0 usft	Easting:	3,254,209.74 usft	Longitude:	104° 35' 4.380 W
Position Uncertainty		0.0 usft	Wellhead Elevation:		Ground Level:	4,989.0 usft

Wellbore	Wellbore #1				
Magnetics	Model Name	Sample Date	Declination (°)	Dip Angle (°)	Field Strength (nT)
	IGRF2015	6/23/2021	7.70	66.93	52,053.40368066

Design	Design #1			
Audit Notes:				
Version:	Phase:	PLAN	Tie On Depth:	0.0
Vertical Section:	Depth From (TVD) (usft)	+N/-S (usft)	+E/-W (usft)	Direction (°)
	0.0	0.0	0.0	274.86

Plan Survey Tool Program	Date	6/24/2021		
Depth From (usft)	Depth To (usft)	Survey (Wellbore)	Tool Name	Remarks
1	0.0	17,096.8	Design #1 (Wellbore #1)	MWD
				OWSG MWD - Standard

Plan Sections										
Measured Depth (usft)	Inclination (°)	Azimuth (°)	Vertical Depth (usft)	+N/-S (usft)	+E/-W (usft)	Dogleg Rate (°/100usft)	Build Rate (°/100usft)	Turn Rate (°/100usft)	TFO (°)	Target
0.0	0.00	0.00	0.0	0.0	0.0	0.00	0.00	0.00	0.00	
500.0	0.00	0.00	500.0	0.0	0.0	0.00	0.00	0.00	0.00	
942.7	8.85	38.98	940.9	26.5	21.5	2.00	2.00	0.00	38.98	
6,359.4	8.85	38.98	6,293.1	674.6	545.9	0.00	0.00	0.00	0.00	
6,802.1	0.00	270.57	6,734.0	701.1	567.4	2.00	-2.00	0.00	180.00	
7,699.4	89.73	270.57	7,307.0	706.8	-2.8	10.00	10.00	0.00	0.00	Dotsero 4 LP
17,096.8	89.73	270.57	7,352.0	799.6	-9,399.6	0.00	0.00	0.00	0.00	Dotsero 4 PBHL

Bayswater Exploration & Production LLC

Planning Report

Database:	edm	Local Co-ordinate Reference:	Well Dotsero 4
Company:	Bayswater Exploration & Production, LLC	TVD Reference:	KB @ 5012.0usft (Original Well Elev)
Project:	DJ Basin	MD Reference:	KB @ 5012.0usft (Original Well Elev)
Site:	Almont-Dotsero 6 South Pad	North Reference:	True
Well:	Dotsero 4	Survey Calculation Method:	Minimum Curvature
Wellbore:	Wellbore #1		
Design:	Design #1		

Planned Survey									
Measured Depth (usft)	Inclination (°)	Azimuth (°)	Vertical Depth (usft)	+N/-S (usft)	+E/-W (usft)	Vertical Section (usft)	Dogleg Rate (°/100usft)	Build Rate (°/100usft)	Turn Rate (°/100usft)
0.0	0.00	0.00	0.0	0.0	0.0	0.0	0.00	0.00	0.00
100.0	0.00	0.00	100.0	0.0	0.0	0.0	0.00	0.00	0.00
200.0	0.00	0.00	200.0	0.0	0.0	0.0	0.00	0.00	0.00
300.0	0.00	0.00	300.0	0.0	0.0	0.0	0.00	0.00	0.00
400.0	0.00	0.00	400.0	0.0	0.0	0.0	0.00	0.00	0.00
500.0	0.00	0.00	500.0	0.0	0.0	0.0	0.00	0.00	0.00
600.0	2.00	38.98	600.0	1.4	1.1	-1.0	2.00	2.00	0.00
700.0	4.00	38.98	699.8	5.4	4.4	-3.9	2.00	2.00	0.00
800.0	6.00	38.98	799.5	12.2	9.9	-8.8	2.00	2.00	0.00
900.0	8.00	38.98	898.7	21.7	17.5	-15.6	2.00	2.00	0.00
942.7	8.85	38.98	940.9	26.5	21.5	-19.1	2.00	2.00	0.00
1,000.0	8.85	38.98	997.6	33.4	27.0	-24.1	0.00	0.00	0.00
1,100.0	8.85	38.98	1,096.4	45.4	36.7	-32.7	0.00	0.00	0.00
1,200.0	8.85	38.98	1,195.2	57.3	46.4	-41.4	0.00	0.00	0.00
1,300.0	8.85	38.98	1,294.0	69.3	56.1	-50.0	0.00	0.00	0.00
1,400.0	8.85	38.98	1,392.8	81.2	65.8	-58.6	0.00	0.00	0.00
1,500.0	8.85	38.98	1,491.6	93.2	75.4	-67.3	0.00	0.00	0.00
1,600.0	8.85	38.98	1,590.4	105.2	85.1	-75.9	0.00	0.00	0.00
1,700.0	8.85	38.98	1,689.2	117.1	94.8	-84.5	0.00	0.00	0.00
1,800.0	8.85	38.98	1,788.0	129.1	104.5	-93.2	0.00	0.00	0.00
1,900.0	8.85	38.98	1,886.8	141.1	114.2	-101.8	0.00	0.00	0.00
2,000.0	8.85	38.98	1,985.6	153.0	123.8	-110.4	0.00	0.00	0.00
2,100.0	8.85	38.98	2,084.5	165.0	133.5	-119.1	0.00	0.00	0.00
2,200.0	8.85	38.98	2,183.3	177.0	143.2	-127.7	0.00	0.00	0.00
2,300.0	8.85	38.98	2,282.1	188.9	152.9	-136.3	0.00	0.00	0.00
2,400.0	8.85	38.98	2,380.9	200.9	162.6	-145.0	0.00	0.00	0.00
2,500.0	8.85	38.98	2,479.7	212.9	172.3	-153.6	0.00	0.00	0.00
2,600.0	8.85	38.98	2,578.5	224.8	181.9	-162.2	0.00	0.00	0.00
2,700.0	8.85	38.98	2,677.3	236.8	191.6	-170.9	0.00	0.00	0.00
2,800.0	8.85	38.98	2,776.1	248.7	201.3	-179.5	0.00	0.00	0.00
2,900.0	8.85	38.98	2,874.9	260.7	211.0	-188.1	0.00	0.00	0.00
3,000.0	8.85	38.98	2,973.7	272.7	220.7	-196.8	0.00	0.00	0.00
3,100.0	8.85	38.98	3,072.5	284.6	230.4	-205.4	0.00	0.00	0.00
3,200.0	8.85	38.98	3,171.3	296.6	240.0	-214.0	0.00	0.00	0.00
3,300.0	8.85	38.98	3,270.2	308.6	249.7	-222.7	0.00	0.00	0.00
3,400.0	8.85	38.98	3,369.0	320.5	259.4	-231.3	0.00	0.00	0.00
3,500.0	8.85	38.98	3,467.8	332.5	269.1	-239.9	0.00	0.00	0.00
3,600.0	8.85	38.98	3,566.6	344.5	278.8	-248.6	0.00	0.00	0.00
3,700.0	8.85	38.98	3,665.4	356.4	288.4	-257.2	0.00	0.00	0.00
3,800.0	8.85	38.98	3,764.2	368.4	298.1	-265.8	0.00	0.00	0.00
3,900.0	8.85	38.98	3,863.0	380.4	307.8	-274.5	0.00	0.00	0.00
4,000.0	8.85	38.98	3,961.8	392.3	317.5	-283.1	0.00	0.00	0.00
4,100.0	8.85	38.98	4,060.6	404.3	327.2	-291.7	0.00	0.00	0.00
4,200.0	8.85	38.98	4,159.4	416.2	336.9	-300.4	0.00	0.00	0.00
4,300.0	8.85	38.98	4,258.2	428.2	346.5	-309.0	0.00	0.00	0.00
4,400.0	8.85	38.98	4,357.0	440.2	356.2	-317.6	0.00	0.00	0.00
4,500.0	8.85	38.98	4,455.9	452.1	365.9	-326.3	0.00	0.00	0.00
4,600.0	8.85	38.98	4,554.7	464.1	375.6	-334.9	0.00	0.00	0.00
4,700.0	8.85	38.98	4,653.5	476.1	385.3	-343.5	0.00	0.00	0.00
4,800.0	8.85	38.98	4,752.3	488.0	394.9	-352.2	0.00	0.00	0.00
4,900.0	8.85	38.98	4,851.1	500.0	404.6	-360.8	0.00	0.00	0.00
5,000.0	8.85	38.98	4,949.9	512.0	414.3	-369.4	0.00	0.00	0.00
5,100.0	8.85	38.98	5,048.7	523.9	424.0	-378.1	0.00	0.00	0.00
5,200.0	8.85	38.98	5,147.5	535.9	433.7	-386.7	0.00	0.00	0.00

Bayswater Exploration & Production LLC

Planning Report

Database:	edm	Local Co-ordinate Reference:	Well Dotsero 4
Company:	Bayswater Exploration & Production, LLC	TVD Reference:	KB @ 5012.0usft (Original Well Elev)
Project:	DJ Basin	MD Reference:	KB @ 5012.0usft (Original Well Elev)
Site:	Almont-Dotsero 6 South Pad	North Reference:	True
Well:	Dotsero 4	Survey Calculation Method:	Minimum Curvature
Wellbore:	Wellbore #1		
Design:	Design #1		

Planned Survey									
Measured Depth (usft)	Inclination (°)	Azimuth (°)	Vertical Depth (usft)	+N/-S (usft)	+E/-W (usft)	Vertical Section (usft)	Dogleg Rate (°/100usft)	Build Rate (°/100usft)	Turn Rate (°/100usft)
5,300.0	8.85	38.98	5,246.3	547.9	443.4	-395.3	0.00	0.00	0.00
5,400.0	8.85	38.98	5,345.1	559.8	453.0	-404.0	0.00	0.00	0.00
5,500.0	8.85	38.98	5,443.9	571.8	462.7	-412.6	0.00	0.00	0.00
5,600.0	8.85	38.98	5,542.7	583.7	472.4	-421.2	0.00	0.00	0.00
5,700.0	8.85	38.98	5,641.6	595.7	482.1	-429.9	0.00	0.00	0.00
5,800.0	8.85	38.98	5,740.4	607.7	491.8	-438.5	0.00	0.00	0.00
5,900.0	8.85	38.98	5,839.2	619.6	501.5	-447.1	0.00	0.00	0.00
6,000.0	8.85	38.98	5,938.0	631.6	511.1	-455.8	0.00	0.00	0.00
6,100.0	8.85	38.98	6,036.8	643.6	520.8	-464.4	0.00	0.00	0.00
6,200.0	8.85	38.98	6,135.6	655.5	530.5	-473.0	0.00	0.00	0.00
6,300.0	8.85	38.98	6,234.4	667.5	540.2	-481.7	0.00	0.00	0.00
6,359.4	8.85	38.98	6,293.1	674.6	545.9	-486.8	0.00	0.00	0.00
6,400.0	8.04	38.98	6,333.3	679.2	549.7	-490.1	2.00	-2.00	0.00
6,500.0	6.04	38.98	6,432.5	688.8	557.4	-497.0	2.00	-2.00	0.00
6,600.0	4.04	38.98	6,532.1	695.6	562.9	-501.9	2.00	-2.00	0.00
6,700.0	2.04	38.98	6,632.0	699.7	566.3	-504.9	2.00	-2.00	0.00
6,800.0	0.04	38.98	6,731.9	701.1	567.4	-505.9	2.00	-2.00	0.00
6,802.1	0.00	270.57	6,734.0	701.1	567.4	-505.9	2.00	-2.00	0.00
6,900.0	9.79	270.57	6,831.5	701.2	559.1	-497.6	10.00	10.00	0.00
7,000.0	19.79	270.57	6,928.0	701.5	533.6	-472.2	10.00	10.00	0.00
7,100.0	29.79	270.57	7,018.7	701.9	491.7	-430.4	10.00	10.00	0.00
7,200.0	39.79	270.57	7,100.7	702.5	434.7	-373.6	10.00	10.00	0.00
7,300.0	49.79	270.57	7,171.6	703.1	364.4	-303.5	10.00	10.00	0.00
7,400.0	59.79	270.57	7,229.2	704.0	282.8	-222.1	10.00	10.00	0.00
7,500.0	69.79	270.57	7,271.7	704.8	192.4	-132.0	10.00	10.00	0.00
7,600.0	79.79	270.57	7,297.9	705.8	96.0	-35.9	10.00	10.00	0.00
7,699.4	89.73	270.57	7,307.0	706.8	-2.8	62.7	10.00	10.00	0.00
7,700.0	89.73	270.57	7,307.0	706.8	-3.4	63.3	0.00	0.00	0.00
7,800.0	89.73	270.57	7,307.5	707.8	-103.4	163.0	0.00	0.00	0.00
7,900.0	89.73	270.57	7,308.0	708.8	-203.4	262.7	0.00	0.00	0.00
8,000.0	89.73	270.57	7,308.4	709.7	-303.4	362.5	0.00	0.00	0.00
8,100.0	89.73	270.57	7,308.9	710.7	-403.4	462.2	0.00	0.00	0.00
8,200.0	89.73	270.57	7,309.4	711.7	-503.4	561.9	0.00	0.00	0.00
8,300.0	89.73	270.57	7,309.9	712.7	-603.4	661.6	0.00	0.00	0.00
8,400.0	89.73	270.57	7,310.4	713.7	-703.4	761.3	0.00	0.00	0.00
8,500.0	89.73	270.57	7,310.8	714.7	-803.4	861.1	0.00	0.00	0.00
8,600.0	89.73	270.57	7,311.3	715.7	-903.4	960.8	0.00	0.00	0.00
8,700.0	89.73	270.57	7,311.8	716.7	-1,003.3	1,060.5	0.00	0.00	0.00
8,800.0	89.73	270.57	7,312.3	717.7	-1,103.3	1,160.2	0.00	0.00	0.00
8,900.0	89.73	270.57	7,312.7	718.6	-1,203.3	1,259.9	0.00	0.00	0.00
9,000.0	89.73	270.57	7,313.2	719.6	-1,303.3	1,359.6	0.00	0.00	0.00
9,100.0	89.73	270.57	7,313.7	720.6	-1,403.3	1,459.4	0.00	0.00	0.00
9,200.0	89.73	270.57	7,314.2	721.6	-1,503.3	1,559.1	0.00	0.00	0.00
9,300.0	89.73	270.57	7,314.7	722.6	-1,603.3	1,658.8	0.00	0.00	0.00
9,400.0	89.73	270.57	7,315.1	723.6	-1,703.3	1,758.5	0.00	0.00	0.00
9,500.0	89.73	270.57	7,315.6	724.6	-1,803.3	1,858.2	0.00	0.00	0.00
9,600.0	89.73	270.57	7,316.1	725.6	-1,903.3	1,957.9	0.00	0.00	0.00
9,700.0	89.73	270.57	7,316.6	726.5	-2,003.3	2,057.7	0.00	0.00	0.00
9,800.0	89.73	270.57	7,317.1	727.5	-2,103.3	2,157.4	0.00	0.00	0.00
9,900.0	89.73	270.57	7,317.5	728.5	-2,203.3	2,257.1	0.00	0.00	0.00
10,000.0	89.73	270.57	7,318.0	729.5	-2,303.3	2,356.8	0.00	0.00	0.00
10,100.0	89.73	270.57	7,318.5	730.5	-2,403.3	2,456.5	0.00	0.00	0.00
10,200.0	89.73	270.57	7,319.0	731.5	-2,503.3	2,556.3	0.00	0.00	0.00
10,300.0	89.73	270.57	7,319.5	732.5	-2,603.3	2,656.0	0.00	0.00	0.00

Bayswater Exploration & Production LLC

Planning Report

Database:	edm	Local Co-ordinate Reference:	Well Dotsero 4
Company:	Bayswater Exploration & Production, LLC	TVD Reference:	KB @ 5012.0usft (Original Well Elev)
Project:	DJ Basin	MD Reference:	KB @ 5012.0usft (Original Well Elev)
Site:	Almont-Dotsero 6 South Pad	North Reference:	True
Well:	Dotsero 4	Survey Calculation Method:	Minimum Curvature
Wellbore:	Wellbore #1		
Design:	Design #1		

Planned Survey									
Measured Depth (usft)	Inclination (°)	Azimuth (°)	Vertical Depth (usft)	+N/-S (usft)	+E/-W (usft)	Vertical Section (usft)	Dogleg Rate (°/100usft)	Build Rate (°/100usft)	Turn Rate (°/100usft)
10,400.0	89.73	270.57	7,319.9	733.5	-2,703.2	2,755.7	0.00	0.00	0.00
10,500.0	89.73	270.57	7,320.4	734.5	-2,803.2	2,855.4	0.00	0.00	0.00
10,600.0	89.73	270.57	7,320.9	735.4	-2,903.2	2,955.1	0.00	0.00	0.00
10,700.0	89.73	270.57	7,321.4	736.4	-3,003.2	3,054.8	0.00	0.00	0.00
10,800.0	89.73	270.57	7,321.8	737.4	-3,103.2	3,154.6	0.00	0.00	0.00
10,900.0	89.73	270.57	7,322.3	738.4	-3,203.2	3,254.3	0.00	0.00	0.00
11,000.0	89.73	270.57	7,322.8	739.4	-3,303.2	3,354.0	0.00	0.00	0.00
11,100.0	89.73	270.57	7,323.3	740.4	-3,403.2	3,453.7	0.00	0.00	0.00
11,200.0	89.73	270.57	7,323.8	741.4	-3,503.2	3,553.4	0.00	0.00	0.00
11,300.0	89.73	270.57	7,324.2	742.4	-3,603.2	3,653.2	0.00	0.00	0.00
11,400.0	89.73	270.57	7,324.7	743.3	-3,703.2	3,752.9	0.00	0.00	0.00
11,500.0	89.73	270.57	7,325.2	744.3	-3,803.2	3,852.6	0.00	0.00	0.00
11,600.0	89.73	270.57	7,325.7	745.3	-3,903.2	3,952.3	0.00	0.00	0.00
11,700.0	89.73	270.57	7,326.2	746.3	-4,003.2	4,052.0	0.00	0.00	0.00
11,800.0	89.73	270.57	7,326.6	747.3	-4,103.2	4,151.7	0.00	0.00	0.00
11,900.0	89.73	270.57	7,327.1	748.3	-4,203.2	4,251.5	0.00	0.00	0.00
12,000.0	89.73	270.57	7,327.6	749.3	-4,303.2	4,351.2	0.00	0.00	0.00
12,100.0	89.73	270.57	7,328.1	750.3	-4,403.1	4,450.9	0.00	0.00	0.00
12,200.0	89.73	270.57	7,328.6	751.3	-4,503.1	4,550.6	0.00	0.00	0.00
12,300.0	89.73	270.57	7,329.0	752.2	-4,603.1	4,650.3	0.00	0.00	0.00
12,400.0	89.73	270.57	7,329.5	753.2	-4,703.1	4,750.0	0.00	0.00	0.00
12,500.0	89.73	270.57	7,330.0	754.2	-4,803.1	4,849.8	0.00	0.00	0.00
12,600.0	89.73	270.57	7,330.5	755.2	-4,903.1	4,949.5	0.00	0.00	0.00
12,700.0	89.73	270.57	7,330.9	756.2	-5,003.1	5,049.2	0.00	0.00	0.00
12,800.0	89.73	270.57	7,331.4	757.2	-5,103.1	5,148.9	0.00	0.00	0.00
12,900.0	89.73	270.57	7,331.9	758.2	-5,203.1	5,248.6	0.00	0.00	0.00
13,000.0	89.73	270.57	7,332.4	759.2	-5,303.1	5,348.4	0.00	0.00	0.00
13,100.0	89.73	270.57	7,332.9	760.1	-5,403.1	5,448.1	0.00	0.00	0.00
13,200.0	89.73	270.57	7,333.3	761.1	-5,503.1	5,547.8	0.00	0.00	0.00
13,300.0	89.73	270.57	7,333.8	762.1	-5,603.1	5,647.5	0.00	0.00	0.00
13,400.0	89.73	270.57	7,334.3	763.1	-5,703.1	5,747.2	0.00	0.00	0.00
13,500.0	89.73	270.57	7,334.8	764.1	-5,803.1	5,846.9	0.00	0.00	0.00
13,600.0	89.73	270.57	7,335.3	765.1	-5,903.1	5,946.7	0.00	0.00	0.00
13,700.0	89.73	270.57	7,335.7	766.1	-6,003.0	6,046.4	0.00	0.00	0.00
13,800.0	89.73	270.57	7,336.2	767.1	-6,103.0	6,146.1	0.00	0.00	0.00
13,900.0	89.73	270.57	7,336.7	768.1	-6,203.0	6,245.8	0.00	0.00	0.00
14,000.0	89.73	270.57	7,337.2	769.0	-6,303.0	6,345.5	0.00	0.00	0.00
14,100.0	89.73	270.57	7,337.6	770.0	-6,403.0	6,445.3	0.00	0.00	0.00
14,200.0	89.73	270.57	7,338.1	771.0	-6,503.0	6,545.0	0.00	0.00	0.00
14,300.0	89.73	270.57	7,338.6	772.0	-6,603.0	6,644.7	0.00	0.00	0.00
14,400.0	89.73	270.57	7,339.1	773.0	-6,703.0	6,744.4	0.00	0.00	0.00
14,500.0	89.73	270.57	7,339.6	774.0	-6,803.0	6,844.1	0.00	0.00	0.00
14,600.0	89.73	270.57	7,340.0	775.0	-6,903.0	6,943.8	0.00	0.00	0.00
14,700.0	89.73	270.57	7,340.5	776.0	-7,003.0	7,043.6	0.00	0.00	0.00
14,800.0	89.73	270.57	7,341.0	776.9	-7,103.0	7,143.3	0.00	0.00	0.00
14,900.0	89.73	270.57	7,341.5	777.9	-7,203.0	7,243.0	0.00	0.00	0.00
15,000.0	89.73	270.57	7,342.0	778.9	-7,303.0	7,342.7	0.00	0.00	0.00
15,100.0	89.73	270.57	7,342.4	779.9	-7,403.0	7,442.4	0.00	0.00	0.00
15,200.0	89.73	270.57	7,342.9	780.9	-7,503.0	7,542.1	0.00	0.00	0.00
15,300.0	89.73	270.57	7,343.4	781.9	-7,603.0	7,641.9	0.00	0.00	0.00
15,400.0	89.73	270.57	7,343.9	782.9	-7,702.9	7,741.6	0.00	0.00	0.00
15,500.0	89.73	270.57	7,344.4	783.9	-7,802.9	7,841.3	0.00	0.00	0.00
15,600.0	89.73	270.57	7,344.8	784.9	-7,902.9	7,941.0	0.00	0.00	0.00
15,700.0	89.73	270.57	7,345.3	785.8	-8,002.9	8,040.7	0.00	0.00	0.00

Bayswater Exploration & Production LLC

Planning Report

Database:	edm	Local Co-ordinate Reference:	Well Dotsero 4
Company:	Bayswater Exploration & Production, LLC	TVD Reference:	KB @ 5012.0usft (Original Well Elev)
Project:	DJ Basin	MD Reference:	KB @ 5012.0usft (Original Well Elev)
Site:	Almont-Dotsero 6 South Pad	North Reference:	True
Well:	Dotsero 4	Survey Calculation Method:	Minimum Curvature
Wellbore:	Wellbore #1		
Design:	Design #1		

Planned Survey										
Measured Depth (usft)	Inclination (°)	Azimuth (°)	Vertical Depth (usft)	+N/-S (usft)	+E/-W (usft)	Vertical Section (usft)	Dogleg Rate (°/100usft)	Build Rate (°/100usft)	Turn Rate (°/100usft)	
15,800.0	89.73	270.57	7,345.8	786.8	-8,102.9	8,140.5	0.00	0.00	0.00	
15,900.0	89.73	270.57	7,346.3	787.8	-8,202.9	8,240.2	0.00	0.00	0.00	
16,000.0	89.73	270.57	7,346.7	788.8	-8,302.9	8,339.9	0.00	0.00	0.00	
16,100.0	89.73	270.57	7,347.2	789.8	-8,402.9	8,439.6	0.00	0.00	0.00	
16,200.0	89.73	270.57	7,347.7	790.8	-8,502.9	8,539.3	0.00	0.00	0.00	
16,300.0	89.73	270.57	7,348.2	791.8	-8,602.9	8,639.0	0.00	0.00	0.00	
16,400.0	89.73	270.57	7,348.7	792.8	-8,702.9	8,738.8	0.00	0.00	0.00	
16,500.0	89.73	270.57	7,349.1	793.8	-8,802.9	8,838.5	0.00	0.00	0.00	
16,600.0	89.73	270.57	7,349.6	794.7	-8,902.9	8,938.2	0.00	0.00	0.00	
16,700.0	89.73	270.57	7,350.1	795.7	-9,002.9	9,037.9	0.00	0.00	0.00	
16,800.0	89.73	270.57	7,350.6	796.7	-9,102.9	9,137.6	0.00	0.00	0.00	
16,900.0	89.73	270.57	7,351.1	797.7	-9,202.9	9,237.4	0.00	0.00	0.00	
17,000.0	89.73	270.57	7,351.5	798.7	-9,302.8	9,337.1	0.00	0.00	0.00	
17,096.8	89.73	270.57	7,352.0	799.6	-9,399.6	9,433.6	0.00	0.00	0.00	
20" Casing										

Design Targets										
Target Name	Dip Angle (°)	Dip Dir. (°)	TVD (usft)	+N/-S (usft)	+E/-W (usft)	Northing (usft)	Easting (usft)	Latitude	Longitude	
- hit/miss target										
- Shape										
Dotsero 4 LP	0.00	0.00	7,307.0	706.8	-2.8	1,463,039.67	3,254,199.66	40° 36' 3.024 N	104° 35' 4.416 W	
- plan hits target center										
- Point										
Dotsero 4 PBHL	0.00	0.00	7,352.0	799.6	-9,399.6	1,463,035.53	3,244,802.37	40° 36' 3.924 N	104° 37' 6.240 W	
- plan hits target center										
- Point										

Casing Points					
Measured Depth (usft)	Vertical Depth (usft)	Name	Casing Diameter (")	Hole Diameter (")	
17,096.8	7,352.0	20" Casing	20	24	