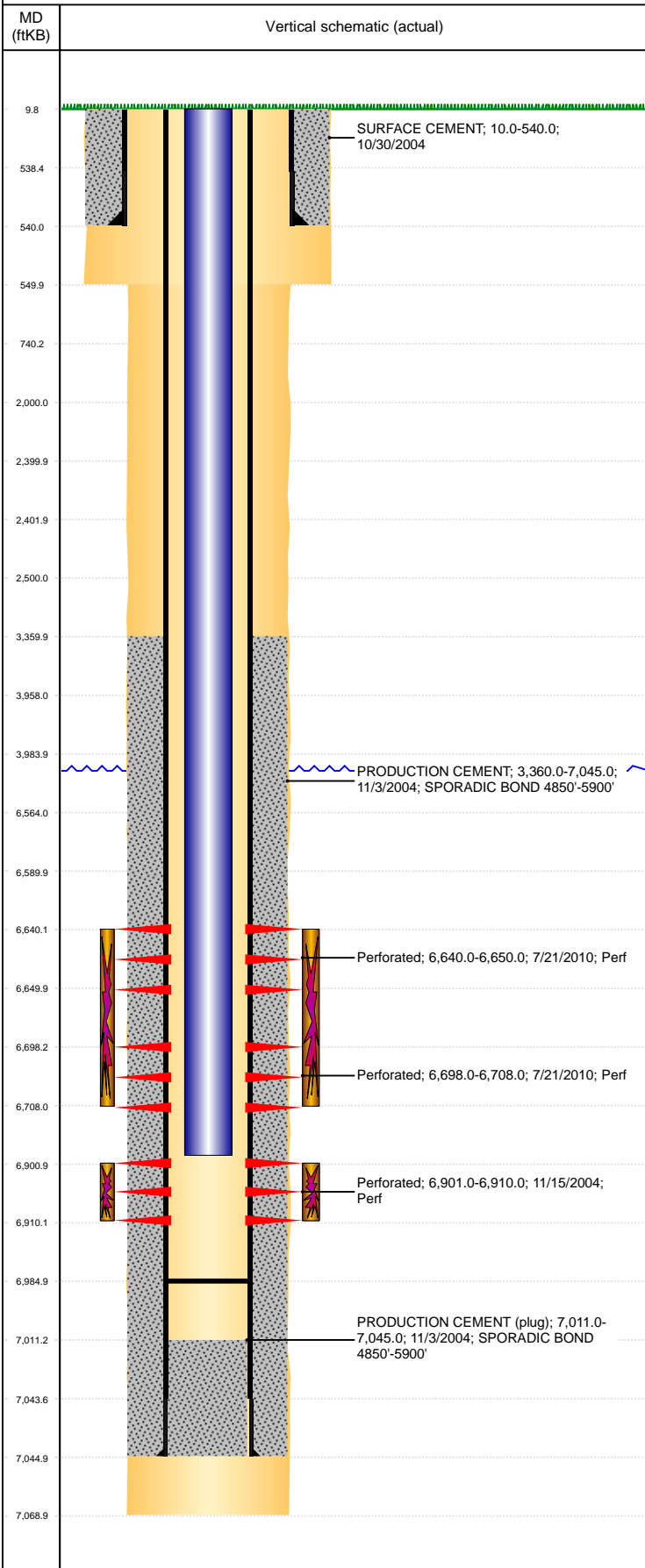


Well Name: MARIE D04-19

VERTICAL, ORIGINAL HOLE, 7/9/2021 9:10:23 AM



Well Header									
API 05-123-22512		Business Unit DJ BASIN			District 15		Well Config VERTICAL		
KB - GL / MSL (ft... 10.00		Spud Date 10/30/2004		P & A Date		Well Production Status SI			SoRT No
Comment									
Surface Location (Congressional)									
Qtr 3 SE	Qtr 4 NW	Section 4	Twnshp 3	Twnsh... N	Range 64	Rng E... W	Actual Latitude (°) 40.25819610		Actual Longitude (°) -104.55979839
Wellbore Sections									
Section Des			Size (in)			Act Top, MD (ftKB)		Act Btm, MD (ftKB)	
SURFACE			12 1/4			10		550	
PRODUCTION			7 7/8			550		7,069	
Casing Strings									
Csg Des			Run Date		OD (in)	Wt/Len (lb/ft)	Grade	Top, MD (ftKB)	MD (ftKB)
Surface Casing			10/30/2004		8 5/8	24.00	J-55	10.0	540.0
Production			11/3/2004		4 1/2	11.60	M-80	10.0	7,045.0
Cement									
Des					Start Date		Top (ftKB)		Btm (ftKB)
SURFACE CEMENT					10/30/2004		10.0		540.0
PRODUCTION CEMENT					11/3/2004		3,360.0		7,045.0
Zone Statuses									
Zone Name	Status Date	Status	Fluid Type	Job					Prod Method
CODELL	7/23/2010	PR	Water	RE-FRAC & RECOMPLETE, 7/14/2010 06:00					Flowing
CODELL	5/9/2017	SI							
NIOBRARA	7/31/2009	PR							
NIOBRARA	7/23/2010	PR		RE-FRAC & RECOMPLETE, 7/14/2010 06:00					
Perforation Data									
Linked Zone		Bnch/Stg	Entered Shot Total	Top (ftKB)		Btm (ftKB)		Date	
NIOBRARA, ORIGINAL HOLE			20	6,640.00		6,650.00		7/21/2010	
NIOBRARA, ORIGINAL HOLE			20	6,698.00		6,708.00		7/21/2010	
CODELL, ORIGINAL HOLE			36	6,901.00		6,910.00		11/15/2004	
Stimulation Intervals									
Zone				Start Date		Top (ftKB)		Btm (ftKB)	
NIOBRARA, ORIGINAL HOLE				7/21/2010		6,640.0		6,708.0	
CODELL, ORIGINAL HOLE				11/17/2004		6,901.0		6,910.0	
CODELL, ORIGINAL HOLE				7/21/2010		6,901.0		6,910.0	
Other In Hole									
Run Date	Des				Make		OD (in)	Top (ftKB)	Btm (ftKB)
Logs									
Date		Type					Top, MD (ftKB)		Btm, MD (ftKB)
11/2/2004		COMPENSATED DENSITY					4,250.0		7,049.0
11/2/2004		INDUCTION					4,250.0		7,069.0
11/11/2004		CBL/CCL/GR					3,100.0		7,008.0
6/5/2020		GYRO					100.0		6,800.0
Plug Back Total Depths									
Date		Type			Com				Depth (ftKB)
11/11/2004					DEPTH LOGGER				7,011.0
7/30/2010		PLUG REMNANTS			75' OF RAT HOLE				6,985.0