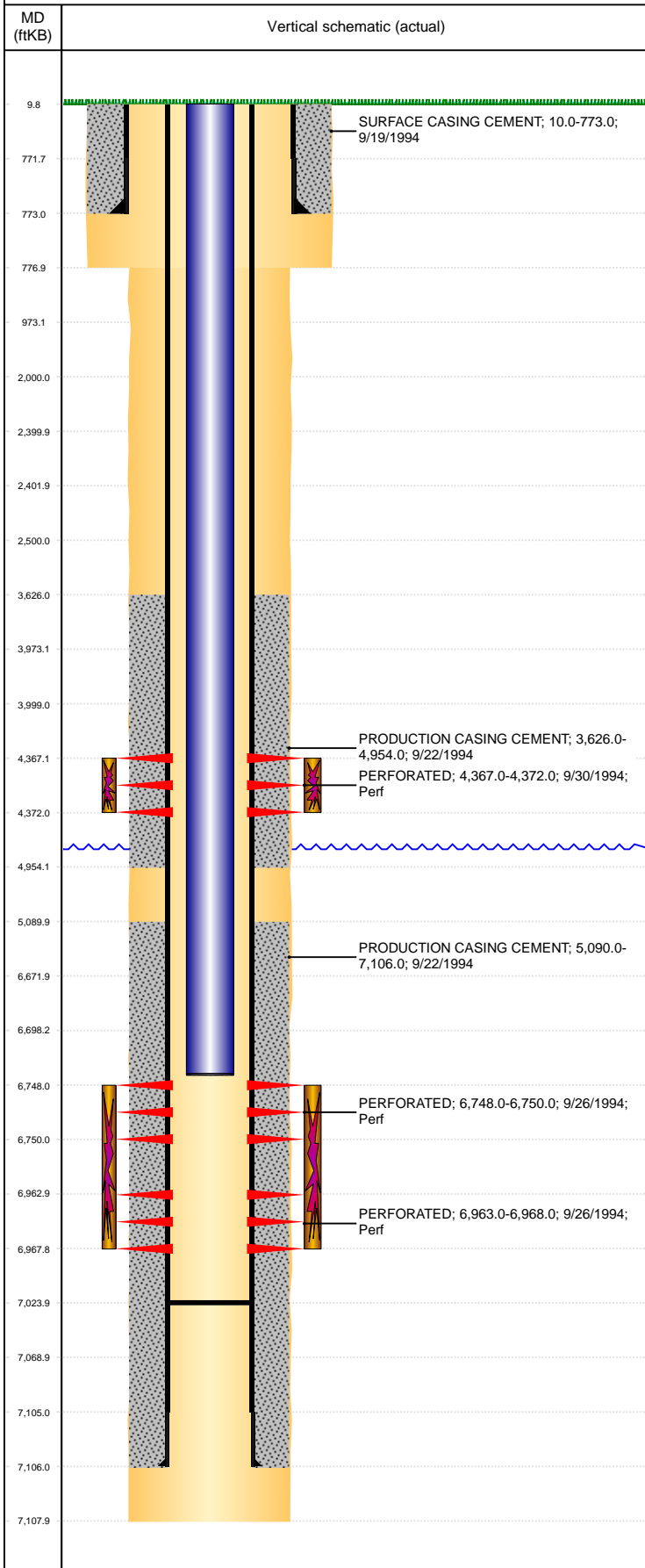


Well Name: LDS A 15-8

VERTICAL, ORIGINAL HOLE, 7/8/2021 11:02:04 AM



Well Header									
API 05-123-18415		Business Unit DJ BASIN			District 15		Well Config VERTICAL		
KB - GL / MSL (ft... 10.00		Spud Date 9/19/1994		P & A Date		Well Production Status SI			SoRT No
Comment NO DATA IN FILE HAD TO USE REPORTS ON COGIS FOR INFORMATION, LIMITED ENTRY									
Surface Location (Congressional)									
Qtr 3 SW	Qtr 4 SE	Section 8	Twnshp 3	Twنش... N	Range 64	Rng E/... W	Actual Latitude (°) 40.23473230	Actual Longitude (°) -104.57263850	
Wellbore Sections									
Section Des			Size (in)			Act Top, MD (ftKB)		Act Btm, MD (ftKB)	
SURFACE			12 1/4			10		777	
PRODUCTION			7 7/8			777		7,108	
Casing Strings									
Csg Des		Run Date		OD (in)	Wt/Len (lb/ft)	Grade	Top, MD (ftKB)	MD (ftKB)	
Surface		9/19/1994		8 5/8	24.00		10.0	773.0	
PRODUCTION CASING		9/22/1994		4 1/2	11.60	I-70	10.0	7,106.0	
Cement									
Des				Start Date		Top (ftKB)		Btm (ftKB)	
SURFACE CASING CEMENT				9/19/1994		10.0		773.0	
PRODUCTION CASING CEMENT				9/22/1994		3,626.0		4,954.0	
PRODUCTION CASING CEMENT				9/22/1994		5,090.0		7,106.0	
Zone Statuses									
Zone Name	Status Date	Status	Fluid Type	Job				Prod Method	
SUSSEX	3/10/2014	PR	Water					Flowing	
SUSSEX	3/22/2017	SI							
NIOBRARA	3/10/2014	PR	Water	DRILLING/COMPLETION - ORIGINAL, 9/19/1994...				Flowing	
NIOBRARA	3/22/2017	SI							
CODELL	10/13/1994	PR						Flowing	
CODELL	3/10/2014	PR	Water						
Perforation Data									
Linked Zone		Bnch/Stg	Entered Shot Total	Top (ftKB)		Btm (ftKB)		Date	
SUSSEX, ORIGINAL HOLE		B	12	4,367.00		4,372.00		9/30/1994	
NIOBRARA, ORIGINAL HOLE			6	6,748.00		6,750.00		9/26/1994	
CODELL, ORIGINAL HOLE			12	6,963.00		6,968.00		9/26/1994	
Stimulation Intervals									
Zone			Start Date			Top (ftKB)		Btm (ftKB)	
SUSSEX, ORIGINAL HOLE			9/30/1994			4,367.0		4,372.0	
NIOBRARA-CODELL, ORIGINAL HOLE			9/26/1994			6,748.0		6,968.0	
Other In Hole									
Run Date	Des				Make	OD (in)	Top (ftKB)	Btm (ftKB)	
Logs									
Date		Type				Top, MD (ftKB)		Btm, MD (ftKB)	
9/22/1994		GAMMA RAY				4,200.0		7,111.0	
9/22/1994		INDUCTION				773.0		7,111.0	
9/26/1994		CEMENT BOND				3,540.0		7,017.0	
Plug Back Total Depths									
Date		Type		Com				Depth (ftKB)	
9/22/1994		FLOAT COLLAR		TOP OF FLOAT COLLAR				7,090.0	
9/26/1994		FILL		DEPTH LOGGER ON CBL				7,024.0	