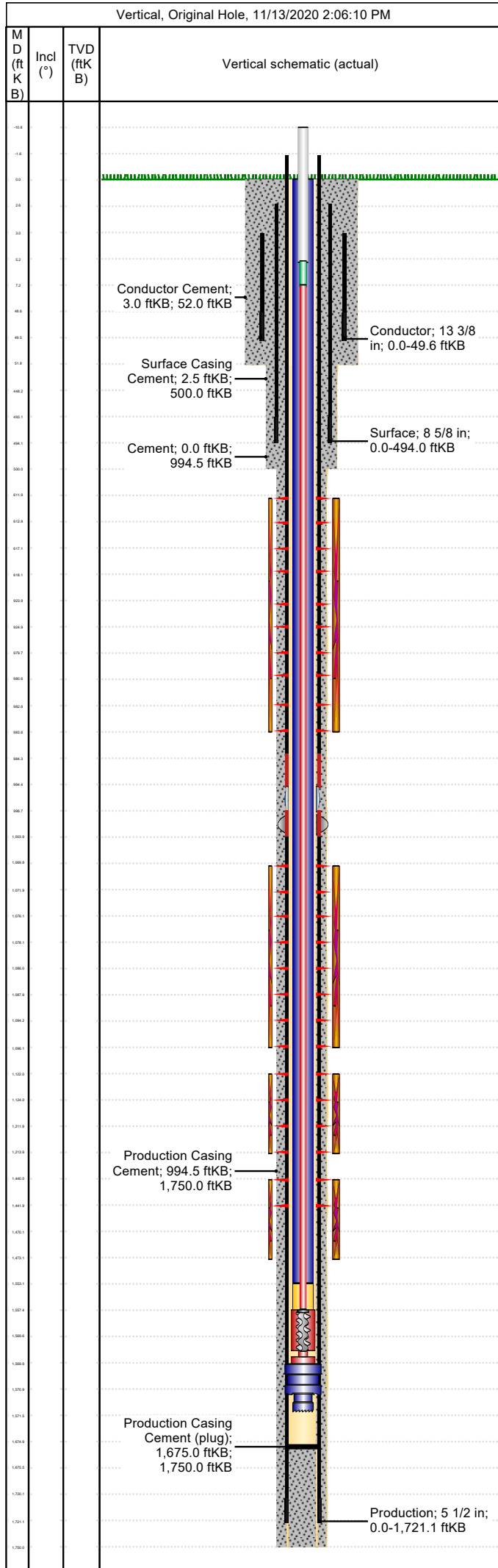


Well Name: Apache Canyon 35-14-02

Conductor

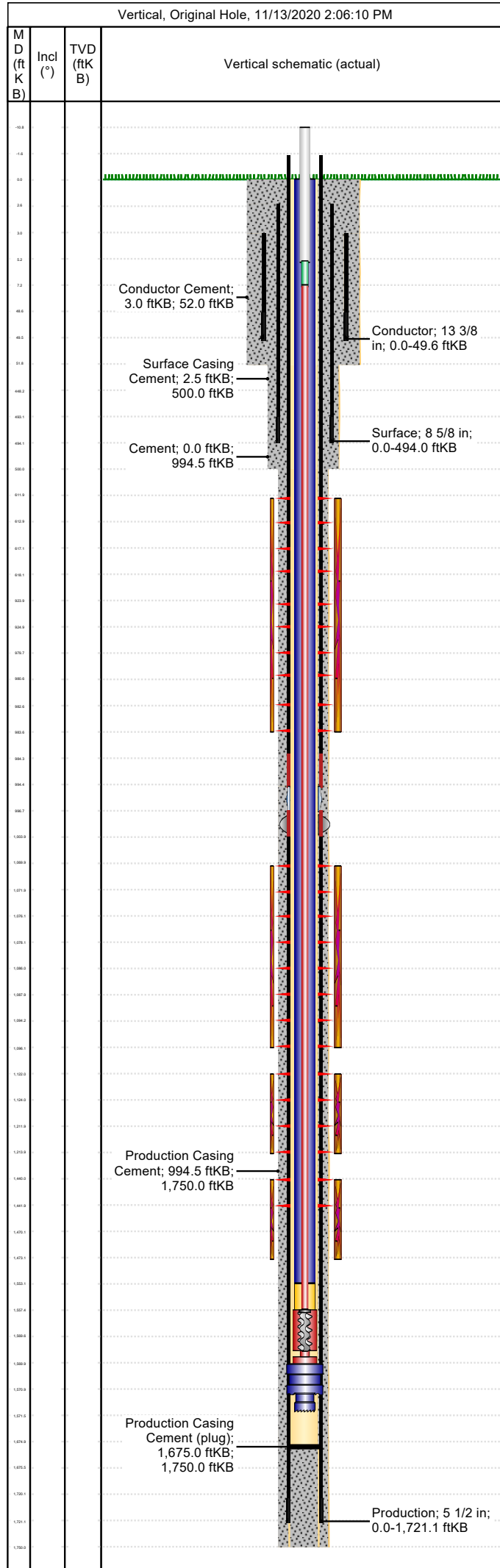
API/UWI 05071092330000	Location T33S-R67W-S35	Field Name Purgatoire River	Permit Number 20070313	State/Province Colorado	Well Configuration Type Vertical
Gr Elev (ft) 7,008.00	Casing Flange Elevation (ft)	KB-Ground Distance (ft) 0.00	KB-Casing Flange Distance (ft)	Spud Date 4/27/2007 12:00	Rig Release Date 4/29/2007 21:30



Wellbore									
Wellbore Name			Profile Type			Vertical Section Direction (°)			
Section Des		Size (in)		Act Top (ftKB)		Act Btm (ftKB)			
<b>Kick Offs &amp; Key Depths</b>									
Type		Top Depth (ftKB)			Depth Top (TVD) (ftKB)				
<b>Wellhead</b>									
Type									
Des		Make		Model		SN		WP Top (psi)	
<b>Last Mud Check</b>									
Date	Type	Depth (ftKB)	Dens (lb/gal)	Vis (s/qt)	Gel 10s (lb/100ft²)	Gel 10m (lb/100ft²)	PV (cP)	YP (lb/100ft²)	
<b>Casing</b>									
Casing Description Conductor			Run Date 4/27/2007 15:00		Set Depth (ftKB) 49.6		Wellbore Original Hole		
Centralizers 1 - 13-3/8" x 17-1/2" bow					Scratchers				
Jts	Item Des	OD (in)	ID (in)	Wt (lb/ft)	Grade	Len (ft)	Top (ftKB)	Btm (ftKB)	
1	Collar BGL					3.00	0.0	3.0	
1	Casing Joints	13 3/8	12.62	54.50	J-55	45.65	3.0	48.6	
1	Guide Shoe	13 3/8	12.62	54.50	J-55	1.00	48.6	49.6	
Casing Description Surface			Run Date 4/28/2007 11:15		Set Depth (ftKB) 494.0		Wellbore Original Hole		
Centralizers 4 - 8-5/8" x 11" bow					Scratchers 2 - Turbos				
Jts	Item Des	OD (in)	ID (in)	Wt (lb/ft)	Grade	Len (ft)	Top (ftKB)	Btm (ftKB)	
1	Collar BGL					2.50	0.0	2.5	
10	Casing Joints	8 5/8	8.10	24.00	J-55	445.82	2.5	448.3	
1	Insert Float Valve	8 5/8	8.10	24.00	J-55	0.00	448.3	448.3	
1	Casing Joints	8 5/8	8.10	24.00	J-55	44.72	448.3	493.0	
1	Guide Shoe	8 5/8	8.10	24.00	J-55	1.00	493.0	494.0	
Casing Description Production			Run Date 4/29/2007 21:00		Set Depth (ftKB) 1,721.1		Wellbore Original Hole		
Centralizers 8 - 5-1/2" x 7-7/8" bow					Scratchers 2 - Turbos & 4 - Cement Baskets				
Jts	Item Des	OD (in)	ID (in)	Wt (lb/ft)	Grade	Len (ft)	Top (ftKB)	Btm (ftKB)	
1	Collar AGL					-1.50	0.0	-1.5	
22	Casing Joints	5 1/2	4.95	15.50	J-55	985.60	-1.5	984.1	
1	Casing Pup Joint	5 1/2	4.95	15.50	J-55	10.40	984.1	994.5	
1	Stage Collar	5 1/2	4.95	15.50	J-55	2.15	994.5	996.7	
1	External Casing Packer	5 1/2	4.95	15.50	J-55	7.15	996.7	1,003.8	
15	Casing Joints	5 1/2	4.95	15.50	J-55	671.70	1,003.8	1,675.5	
1	Insert float valve	5 1/2	4.95	15.50	J-55	0.00	1,675.5	1,675.5	
1	Casing Joints	5 1/2	4.95	15.50	J-55	44.80	1,675.5	1,720.3	
1	Float Shoe	5 1/2	4.95	15.50	J-55	0.83	1,720.3	1,721.1	
<b>Cement: &lt;Description?&gt;</b>									
Cementing Start Date			Cementing End Date			Wellbore			
Evaluation Method			Cement Evaluation Results						
Comment									
<b>Cement Stage: &lt;Description?&gt;</b>									
Top Depth (ftKB)		Bottom Depth (ftKB)		Full Return?		Vol Cement		Top Plug?	
Initial Pump Rate (bbl/min)		Final Pump Rate (bbl/min)		Avg Pump Rate (bbl/min)		Final Pump Pressure (psi)		Plug Bump Pressure (psi)	
Pipe Reciprocated?		Stroke (ft)		Reciprocation Rate (spm)		Pipe Rotated?		Pipe RPM (rpm)	
Tagged Depth (ftKB)		Tag Method		Depth Plug Drilled Out To (ft)		Drill Out Diameter (in)		Drill Out Date	

**Well Name: Apache Canyon 35-14-02**

API/UWI 05071092330000	Location T33S-R67W-S35	Field Name Purgatoire River	Permit Number 20070313	State/Province Colorado	Well Configuration Type Vertical
Gr Elev (ft) 7,008.00	Casing Flange Elevation (ft)	KB-Ground Distance (ft) 0.00	KB-Casing Flange Distance (ft)	Spud Date 4/27/2007 12:00	Rig Release Date 4/29/2007 21:30



**Cement Fluid: <Description?>**

Fluid Type	Fluid Description	Amount (sack)	Class	Volume Pumped (bbl)
Estimated Top (ftKB)	Est Btm (ftKB)	Yield (ft³/sack)	Mix H2O Ratio (gal/sack)	Free Water (%)
Density (lb/gal)	Plastic Viscosity (cP)	Thickening Time (hr)	1st Compressive Strength (psi)	

**Cement Fluid Additives**

Add	Type	Conc