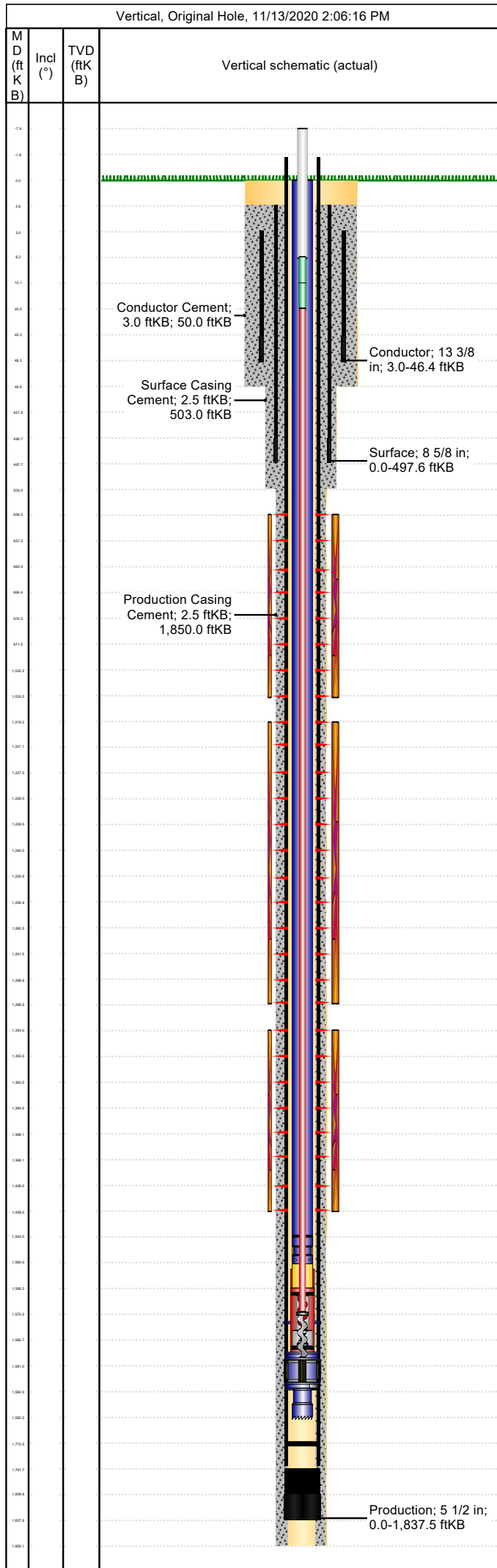


Well Name: Apache Canyon 35-12

Conductor

API/UWI 05071093250000	Location T33S-R67W-S35	Field Name Purgatoire River	Permit Number 20072370	State/Province Colorado	Well Configuration Type Vertical
Gr Elev (ft) 7,080.00	Casing Flange Elevation (ft)	KB-Ground Distance (ft) 0.00	KB-Casing Flange Distance (ft)	Spud Date 9/2/2007 15:00	Rig Release Date 9/4/2007 18:00



Wellbore									
Wellbore Name				Profile Type			Vertical Section Direction (°)		
Section Des		Size (in)		Act Top (ftKB)			Act Btm (ftKB)		
Kick Offs & Key Depths									
Type		Top Depth (ftKB)				Depth Top (TVD) (ftKB)			
Wellhead									
Type									
Des		Make		Model		SN		WP Top (psi)	
Last Mud Check									
Date	Type	Depth (ftKB)	Dens (lb/gal)	Vis (s/qt)	Gel 10s (lb/100ft²)	Gel 10m (lb/100ft²)	PV (cP)	YP (lb/100ft²)	
Casing									
Casing Description Conductor				Run Date 9/2/2007 17:30		Set Depth (ftKB) 46.4		Wellbore Original Hole	
Centralizers 1 - 13-3/8" x 17-1/2"				Scratchers					
Jts	Item Des	OD (in)	ID (in)	Wt (lb/ft)	Grade	Len (ft)	Top (ftKB)	Btm (ftKB)	
1	Casing Joints	13 3/8	12.62	54.50	J-55	42.35	3.0	45.4	
1	Guide Shoe	13 3/8	12.62	54.50	J-55	1.00	45.4	46.4	
Casing Description Surface				Run Date 9/3/2007 15:00		Set Depth (ftKB) 497.6		Wellbore Original Hole	
Centralizers 4 - 8-5/8" x 11"				Scratchers 2 - Turbos					
Jts	Item Des	OD (in)	ID (in)	Wt (lb/ft)	Grade	Len (ft)	Top (ftKB)	Btm (ftKB)	
1	Collar BGL					2.50	0.0	2.5	
10	Casing Joints	8 5/8	8.10	24.00	J-55	449.18	2.5	451.7	
1	Insert float valve	8 5/8	8.10	24.00	J-55	0.00	451.7	451.7	
1	Casing Joints	8 5/8	8.10	24.00	J-55	44.90	451.7	496.6	
1	Guide Shoe	8 5/8	8.10	24.00	J-55	1.00	496.6	497.6	
Casing Description Production				Run Date 9/4/2007 00:00		Set Depth (ftKB) 1,837.5		Wellbore Original Hole	
Centralizers 9 - 5-1/2" x 7-7/8"				Scratchers 3 - Turbos & 4 - cement baskets					
Jts	Item Des	OD (in)	ID (in)	Wt (lb/ft)	Grade	Len (ft)	Top (ftKB)	Btm (ftKB)	
1	AGL					-1.50	0.0	-1.5	
40	Casing Joints	5 1/2	4.95	15.50	J-55	1,793.23	-1.5	1,791.7	
1	Insert float valve	5 1/2	4.95	15.50	J-55	0.00	1,791.7	1,791.7	
1	Casing Joints	5 1/2	0.00	15.50	J-55	44.90	1,791.7	1,836.6	
1	Guide Shoe	5 1/2	0.00	15.50	J-55	0.90	1,836.6	1,837.5	
Cement: <Description?>									
Cementing Start Date			Cementing End Date			Wellbore			
Evaluation Method			Cement Evaluation Results						
Comment									
Cement Stage: <Description?>									
Top Depth (ftKB)		Bottom Depth (ftKB)		Full Return?		Vol Cement		Top Plug?	
Initial Pump Rate (bbl/min)		Final Pump Rate (bbl/min)		Avg Pump Rate (bbl/min)		Final Pump Pressure (psi)		Plug Bump Pressure (psi)	
Pipe Reciprocated?		Stroke (ft)		Reciprocation Rate (spm)		Pipe Rotated?		Pipe RPM (rpm)	
Tagged Depth (ftKB)		Tag Method		Depth Plug Drilled Out To (ft)		Drill Out Diameter (in)		Drill Out Date	
Cement Fluid: <Description?>									
Fluid Type		Fluid Description				Amount (sack)		Class	
Estimated Top (ftKB)		Est Btm (ftKB)		Yield (ft³/sack)		Mix H2O Ratio (gal/sack)		Free Water (%)	
Density (lb/gal)		Plastic Viscosity (cP)			Thickening Time (hr)		1st Compressive Strength (psi)		

Well Name: Apache Canyon 35-12

API/UWI 05071093250000	Location T33S-R67W-S35	Field Name Purgatoire River	Permit Number 20072370	State/Province Colorado	Well Configuration Type Vertical
Gr Elev (ft) 7,080.00	Casing Flange Elevation (ft)	KB-Ground Distance (ft) 0.00	KB-Casing Flange Distance (ft)	Spud Date 9/2/2007 15:00	Rig Release Date 9/4/2007 18:00

[illegible]

Cement Fluid Additives		
Add	Type	Conc