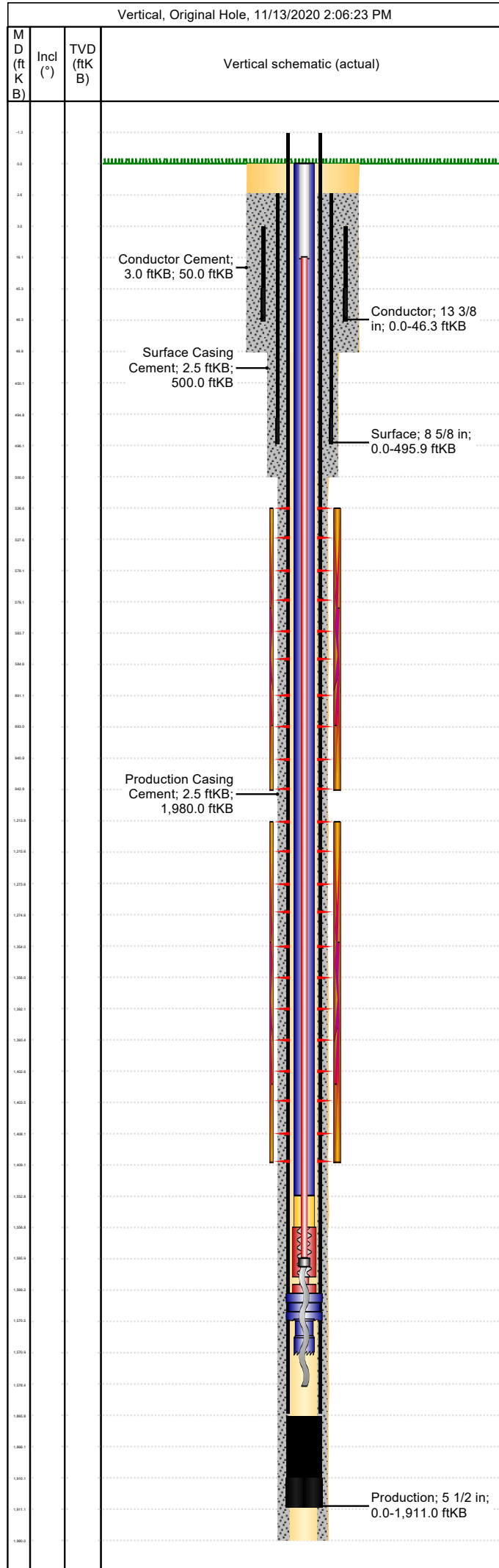


Well Name: Apache Canyon 35-07

Conductor

API/UWI 05071093200000	Location T33S-R67W-S35	Field Name Purgatoire River	Permit Number 20072371	State/Province Colorado	Well Configuration Type Vertical
Gr Elev (ft) 6,953.00	Casing Flange Elevation (ft)	KB-Ground Distance (ft) 0.00	KB-Casing Flange Distance (ft)	Spud Date 8/31/2007 00:00	Rig Release Date 9/2/2007 10:00

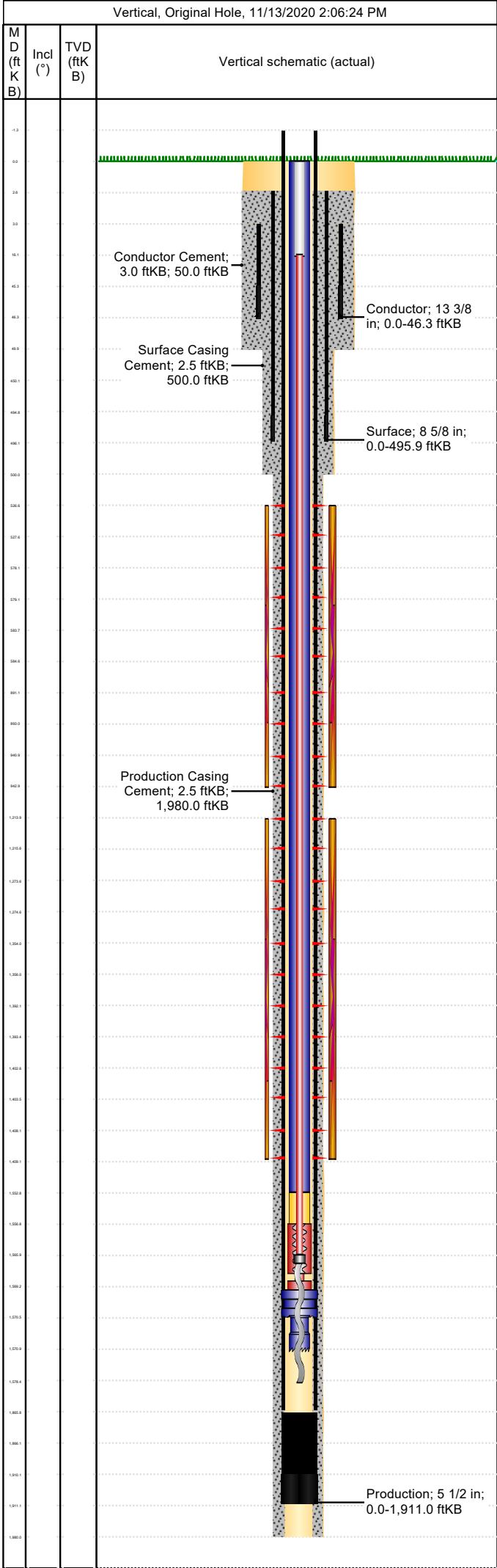


Wellbore									
Wellbore Name			Profile Type			Vertical Section Direction (°)			
Section Des		Size (in)		Act Top (ftKB)		Act Btm (ftKB)			
Kick Offs & Key Depths									
Type		Top Depth (ftKB)				Depth Top (TVD) (ftKB)			
Wellhead									
Type									
Des		Make		Model		SN		WP Top (psi)	
Last Mud Check									
Date	Type	Depth (ftKB)	Dens (lb/gal)	Vis (s/qt)	Gel 10s (lb/100ft²)	Gel 10m (lb/100ft²)	PV (cP)	YP (lb/100ft²)	
Casing									
Casing Description Conductor			Run Date 8/31/2007 15:30		Set Depth (ftKB) 46.3		Wellbore Original Hole		
Centralizers 1 - 13-3/8 x 17-1/2			Scratchers						
Jts	Item Des	OD (in)	ID (in)	Wt (lb/ft)	Grade	Len (ft)	Top (ftKB)	Btm (ftKB)	
1	Collar BGL					3.00	0.0	3.0	
1	Casing Joints	13 3/8	12.62	54.50	J-55	42.25	3.0	45.3	
1	Guide Shoe	13 3/8	12.62	54.50	J-55	1.00	45.3	46.3	
Casing Description Surface			Run Date 9/1/2007 06:45		Set Depth (ftKB) 495.9		Wellbore Original Hole		
Centralizers 4 - 8-5/8 x 11			Scratchers 2 - Turbos						
Jts	Item Des	OD (in)	ID (in)	Wt (lb/ft)	Grade	Len (ft)	Top (ftKB)	Btm (ftKB)	
1	Collar BGL					2.50	0.0	2.5	
10	Casing Joints	8 5/8	8.10	24.00	J-55	447.70	2.5	450.2	
1	Insert float valve	8 5/8	8.10	24.00	J-55	0.00	450.2	450.2	
1	Casing Joints	8 5/8	8.10	24.00	J-55	44.70	450.2	494.9	
1	Guide Shoe	8 5/8	8.10	24.00	J-55	1.00	494.9	495.9	
Casing Description Production			Run Date 9/2/2007 09:30		Set Depth (ftKB) 1,911.0		Wellbore Original Hole		
Centralizers 15 - 5-1/2 x 7-7/8			Scratchers 2 - Turbos & 4 - Cement baskets						
Jts	Item Des	OD (in)	ID (in)	Wt (lb/ft)	Grade	Len (ft)	Top (ftKB)	Btm (ftKB)	
1	AGL					-1.50	0.0	-1.5	
42	Casing Joints	5 1/2	4.95	15.50	J-55	1,867.15	-1.5	1,865.7	
1	Insert float valve	5 1/2	4.95	15.50	J-55	0.00	1,865.7	1,865.7	
1	Casing Joints	5 1/2	0.00	15.50	J-55	44.42	1,865.7	1,910.1	
1	Guide Shoe	5 1/2	0.00	15.50	J-55	0.90	1,910.1	1,911.0	
Cement: <Description?>									
Cementing Start Date		Cementing End Date		Wellbore					
Evaluation Method		Cement Evaluation Results							
Comment									
Cement Stage: <Description?>									
Top Depth (ftKB)		Bottom Depth (ftKB)		Full Return?		Vol Cement		Top Plug?	
Initial Pump Rate (bbl/min)		Final Pump Rate (bbl/min)		Avg Pump Rate (bbl/min)		Final Pump Pressure (psi)		Plug Bump Pressure (psi)	
Pipe Reciprocated?		Stroke (ft)		Reciprocation Rate (spm)		Pipe Rotated?		Pipe RPM (rpm)	
Tagged Depth (ftKB)		Tag Method		Depth Plug Drilled Out To		Drill Out Diameter (in)		Drill Out Date	

Well Name: Apache Canyon 35-07

Conductor

API/UWI 05071093200000	Location T33S-R67W-S35	Field Name Purgatoire River	Permit Number 20072371	State/Province Colorado	Well Configuration Type Vertical
Gr Elev (ft) 6,953.00	Casing Flange Elevation (ft)	KB-Ground Distance (ft) 0.00	KB-Casing Flange Distance (ft)	Spud Date 8/31/2007 00:00	Rig Release Date 9/2/2007 10:00



Cement Fluid: <Description?>				
Fluid Type	Fluid Description		Amount (sack)	Class
Estimated Top (ftKB)	Est Btm (ftKB)	Yield (ft³/sack)	Mix H2O Ratio (gal/sack)	Free Water (%)
Density (lb/gal)		Plastic Viscosity (cP)	Thickening Time (hr)	1st Compressive Strength (psi)
Cement Fluid Additives				
Add		Type		Conc