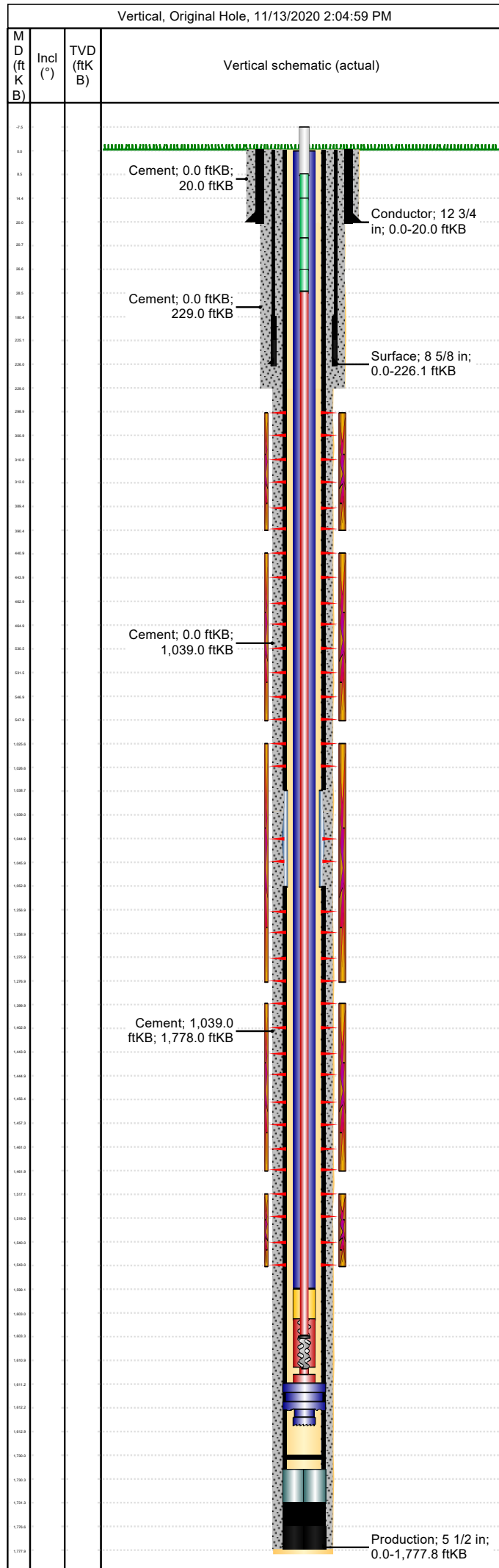


Well Name: Apache Canyon 34-08

Conductor

API/UWI 05071085410000	Location T33S-R67W-S34	Field Name Purgatoire River	Permit Number 20052313	State/Province Colorado	Well Configuration Type Vertical
Gr Elev (ft) 7,067.00	Casing Flange Elevation (ft)	KB-Ground Distance (ft) 0.00	KB-Casing Flange Distance (ft)	Spud Date 11/20/2005 12:15	Rig Release Date 11/22/2005 00:00

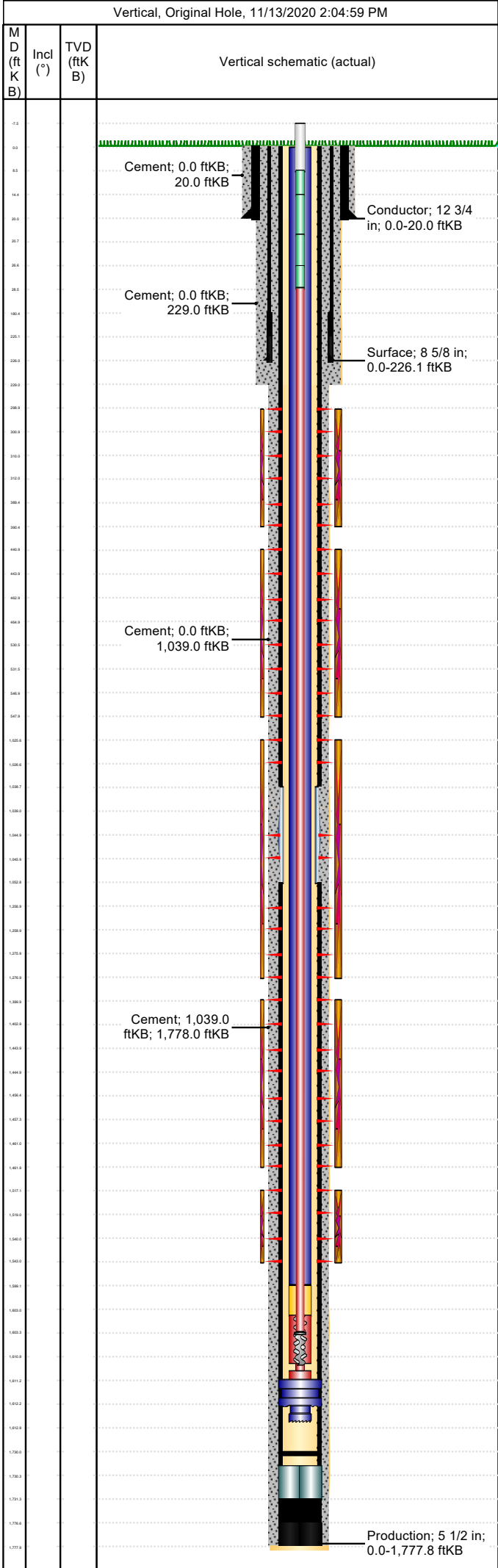


<b>Wellbore</b>									
Wellbore Name			Profile Type			Vertical Section Direction (°)			
Section Des		Size (in)		Act Top (ftKB)		Act Btm (ftKB)			
<b>Kick Offs &amp; Key Depths</b>									
Type		Top Depth (ftKB)			Depth Top (TVD) (ftKB)				
<b>Wellhead</b>									
Type									
Des		Make		Model		SN		WP Top (psi)	
<b>Last Mud Check</b>									
Date	Type	Depth (ftKB)	Dens (lb/gal)	Vis (s/qt)	Gel 10s (lb/100ft²)	Gel 10m (lb/100ft²)	PV (cP)	YP (lb/100ft²)	
<b>Casing</b>									
Casing Description Conductor			Run Date 11/20/2005 00:00		Set Depth (ftKB) 20.0		Wellbore Original Hole		
Centralizers				Scratchers					
Jts	Item Des	OD (in)	ID (in)	Wt (lb/ft)	Grade	Len (ft)	Top (ftKB)	Btm (ftKB)	
	Casing Joints	12 3/4	11.10			20.00	0.0	20.0	
Casing Description Surface			Run Date 11/20/2005 00:00		Set Depth (ftKB) 226.1		Wellbore Original Hole		
Centralizers				Scratchers					
Jts	Item Des	OD (in)	ID (in)	Wt (lb/ft)	Grade	Len (ft)	Top (ftKB)	Btm (ftKB)	
4	Casing Joints	8 5/8	8.10	24.00	J-55	180.49	0.0	180.5	
1	Float Valve	8 5/8				0.00	180.5	180.5	
1	Float Joint	8 5/8				44.60	180.5	225.1	
1	Guide Shoe	8 5/8				1.00	225.1	226.1	
Casing Description Production			Run Date 11/21/2005 00:00		Set Depth (ftKB) 1,777.8		Wellbore Original Hole		
Centralizers				Scratchers					
Jts	Item Des	OD (in)	ID (in)	Wt (lb/ft)	Grade	Len (ft)	Top (ftKB)	Btm (ftKB)	
23	Casing Joints	5 1/2	4.95	15.50	J-55	1,038.69	0.0	1,038.7	
1	Stage Tool	5 1/2				14.25	1,038.7	1,052.9	
15	Casing Joints	5 1/2	4.95	15.50	J-55	677.24	1,052.9	1,730.2	
1	Float Collar	5 1/2	0.00			1.15	1,730.2	1,731.3	
1	Float Joint	5 1/2	0.00			45.13	1,731.3	1,776.5	
1	Float Shoe	5 1/2	0.00			1.30	1,776.5	1,777.8	
<b>Cement: &lt;Description?&gt;</b>									
Cementing Start Date		Cementing End Date			Wellbore				
Evaluation Method		Cement Evaluation Results							
Comment									
<b>Cement Stage: &lt;Description?&gt;</b>									
Top Depth (ftKB)		Bottom Depth (ftKB)		Full Return?		Vol Cement		Top Plug?	
Initial Pump Rate (bbl/min)		Final Pump Rate (bbl/min)		Avg Pump Rate (bbl/min)		Final Pump Pressure (psi)		Plug Bump Pressure (psi)	
Pipe Reciprocated?		Stroke (ft)		Reciprocation Rate (spm)		Pipe Rotated?		Pipe RPM (rpm)	
Tagged Depth (ftKB)		Tag Method		Depth Plug Drilled Out To (ft)		Drill Out Diameter (in)		Drill Out Date	
<b>Cement Fluid: &lt;Description?&gt;</b>									
Fluid Type		Fluid Description				Amount (sack)		Class	
Estimated Top (ftKB)		Est Btm (ftKB)		Yield (ft³/sack)		Mix H2O Ratio (gal/sack)		Free Water (%)	
Density (lb/gal)		Plastic Viscosity (cP)			Thickening Time (hr)			1st Compressive Strength (psi)	

**Well Name: Apache Canyon 34-08**

## Conductor

API/UWI 05071085410000	Location T33S-R67W-S34	Field Name Purgatoire River	Permit Number 20052313	State/Province Colorado	Well Configuration Type Vertical
Gr Elev (ft) 7,067.00	Casing Flange Elevation (ft)	KB-Ground Distance (ft) 0.00	KB-Casing Flange Distance (ft)	Spud Date 11/20/2005 12:15	Rig Release Date 11/22/2005 00:00



Cement Fluid Additives		
Add	Type	Conc