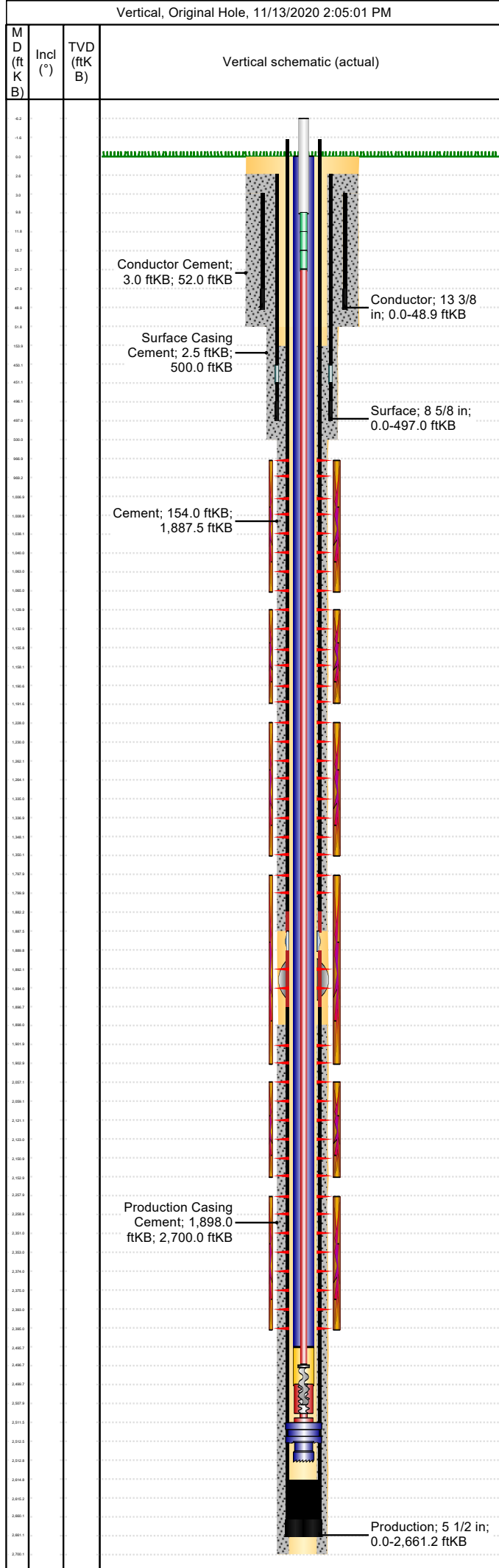


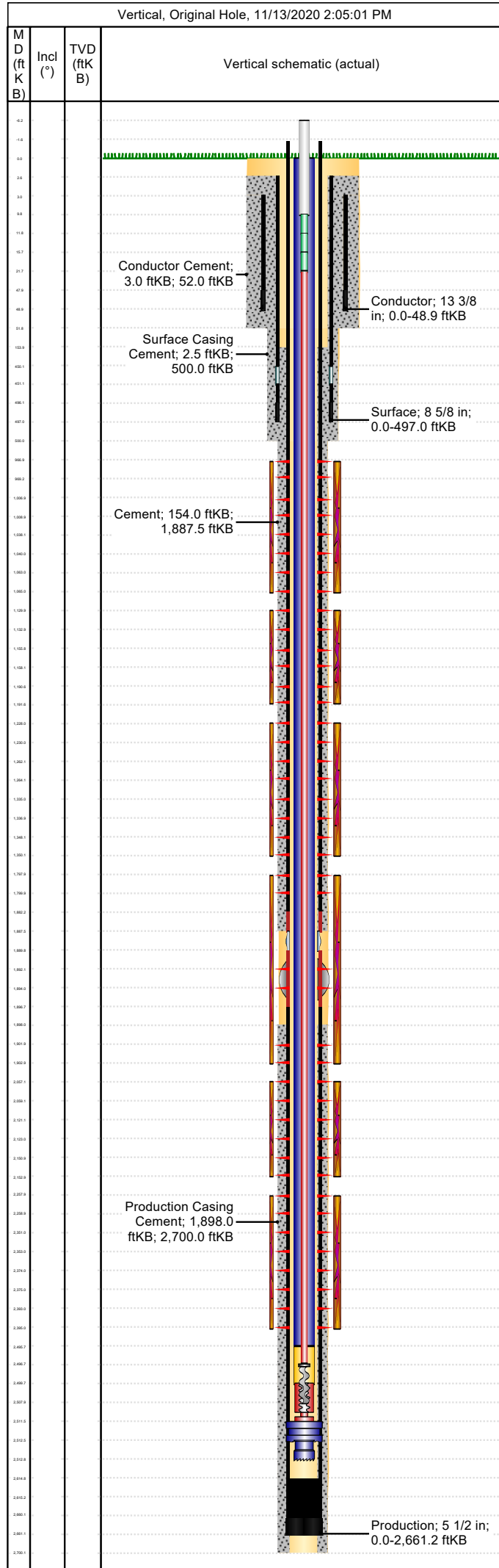
API/UWI 05071091280000	Location T33S-R67W-S32	Field Name Purgatoire River	Permit Number 20065940	State/Province Colorado	Well Configuration Type Vertical
Gr Elev (ft) 8,084.00	Casing Flange Elevation (ft)	KB-Ground Distance (ft) 0.00	KB-Casing Flange Distance (ft)	Spud Date 6/15/2007 13:30	Rig Release Date 6/18/2007 00:00



Wellbore									
Wellbore Name			Profile Type			Vertical Section Direction (°)			
Section Des		Size (in)		Act Top (ftKB)		Act Btm (ftKB)			
Kick Offs & Key Depths									
Type		Top Depth (ftKB)			Depth Top (TVD) (ftKB)				
Wellhead									
Type									
Des		Make		Model		SN		WP Top (psi)	
Last Mud Check									
Date	Type	Depth (ftKB)	Dens (lb/gal)	Vis (s/qt)	Gel 10s (lb/100ft²)	Gel 10m (lb/100ft²)	PV (cP)	YP (lb/100ft²)	
Casing									
Casing Description Conductor			Run Date 6/15/2007 16:30		Set Depth (ftKB) 48.9		Wellbore Original Hole		
Centralizers 1 - 13-3/8" x 17-1/2"					Scratchers				
Jts	Item Des	OD (in)	ID (in)	Wt (lb/ft)	Grade	Len (ft)	Top (ftKB)	Btm (ftKB)	
1	Collar BGL					3.00	0.0	3.0	
1	Casing Joints	13 3/8	12.62	54.50	J-55	44.85	3.0	47.9	
1	Guide Shoe	13 3/8	12.62	54.50	J-55	1.00	47.9	48.9	
Casing Description Surface			Run Date 6/16/2007 08:30		Set Depth (ftKB) 497.0		Wellbore Original Hole		
Centralizers 4 - 8-5/8" x 11"					Scratchers 2 - 8-5/8" x 11" Turbos				
Jts	Item Des	OD (in)	ID (in)	Wt (lb/ft)	Grade	Len (ft)	Top (ftKB)	Btm (ftKB)	
1	Collar BGL					2.50	0.0	2.5	
10	Casing Joints	8 5/8	8.10	24.00	J-55	447.70	2.5	450.2	
1	Float Collar	8 5/8	8.10	24.00	J-55	1.00	450.2	451.2	
1	Casing Joints	8 5/8	8.10	24.00	J-55	44.75	451.2	496.0	
1	Guide Shoe	8 5/8	8.10	24.00	J-55	1.00	496.0	497.0	
Casing Description Production			Run Date 6/17/2007 23:30		Set Depth (ftKB) 2,661.2		Wellbore Original Hole		
Centralizers 15 - 5-1/2" x 7-7/8"					Scratchers 2 - Turbos & 4 - cement baskets				
Jts	Item Des	OD (in)	ID (in)	Wt (lb/ft)	Grade	Len (ft)	Top (ftKB)	Btm (ftKB)	
1	Collar AGL					-1.50	0.0	-1.5	
42	Casing Joints	5 1/2	4.95	15.50	J-55	1,883.70	-1.5	1,882.2	
1	Casing Pup Joint	5 1/2	4.95	15.50	J-55	5.25	1,882.2	1,887.5	
1	Stage Collar	5 1/2	4.95	15.50	J-55	2.30	1,887.5	1,889.8	
1	External Casing Packer	5 1/2	4.95	15.50	J-55	7.00	1,889.8	1,896.8	
16	Casing Joints	5 1/2	4.95	15.50	J-55	717.95	1,896.8	2,614.7	
1	Insert Float Valve	5 1/2	4.95	15.50	J-55	0.00	2,614.7	2,614.7	
1	Casing Joints	5 1/2	0.00	15.50	J-55	45.55	2,614.7	2,660.3	
1	Float Shoe	5 1/2	0.00	15.50	J-55	0.90	2,660.3	2,661.2	
Cement: <Description?>									
Cementing Start Date			Cementing End Date			Wellbore			
Evaluation Method			Cement Evaluation Results						
Comment									
Cement Stage: <Description?>									
Top Depth (ftKB)		Bottom Depth (ftKB)		Full Return?		Vol Cement		Top Plug?	
Initial Pump Rate (bbl/min)		Final Pump Rate (bbl/min)		Avg Pump Rate (bbl/min)		Final Pump Pressure (psi)		Plug Bump Pressure (psi)	
Pipe Reciprocated?		Stroke (ft)		Reciprocation Rate (spm)		Pipe Rotated?		Pipe RPM (rpm)	
Tagged Depth (ftKB)		Tag Method		Depth Plug Drilled Out To (ft)		Drill Out Diameter (in)		Drill Out Date	

Well Name: Apache Canyon 32-12

API/UWI 05071091280000	Location T33S-R67W-S32	Field Name Purgatoire River	Permit Number 20065940	State/Province Colorado	Well Configuration Type Vertical
Gr Elev (ft) 8,084.00	Casing Flange Elevation (ft)	KB-Ground Distance (ft) 0.00	KB-Casing Flange Distance (ft)	Spud Date 6/15/2007 13:30	Rig Release Date 6/18/2007 00:00



Cement Fluid: <Description?>

Fluid Type	Fluid Description	Amount (sack)	Class	Volume Pumped (bbl)
Estimated Top (ftKB)	Est Btm (ftKB)	Yield (ft³/sack)	Mix H2O Ratio (gal/sack)	Free Water (%)
Density (lb/gal)	Plastic Viscosity (cP)	Thickening Time (hr)	1st Compressive Strength (psi)	

Cement Fluid Additives

Add	Type	Conc