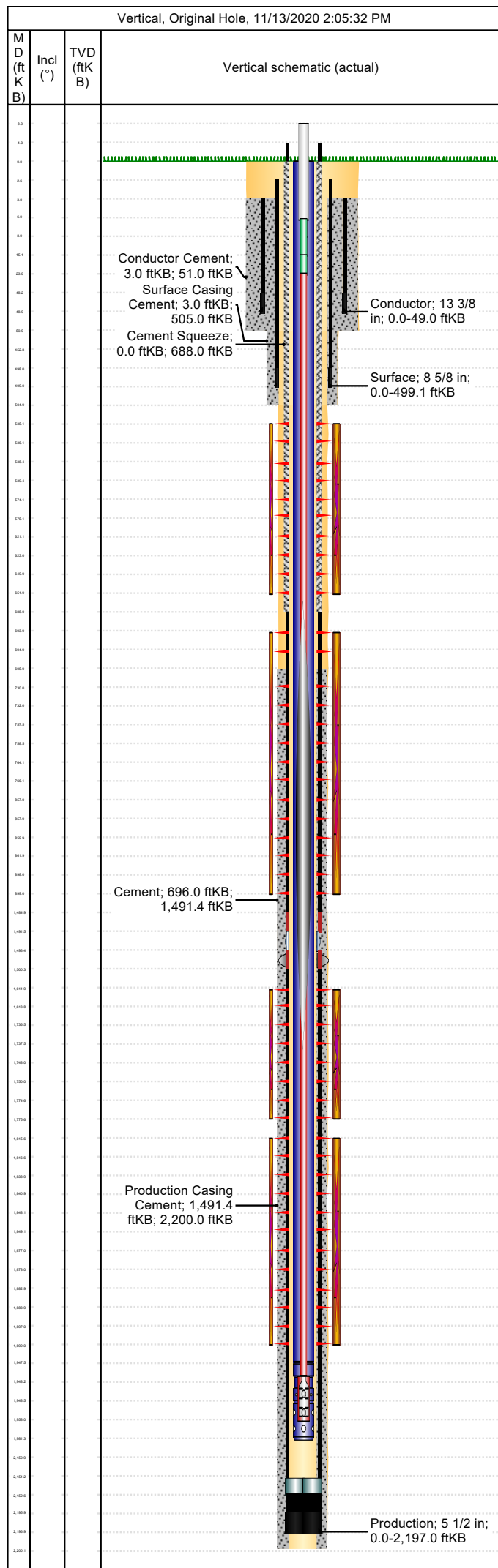


Well Name: Apache Canyon 31-12

Conductor

API/UWI 05071091200000	Location T33S-R67W-S31	Field Name Purgatoire River	Permit Number 20065353	State/Province Colorado	Well Configuration Type Vertical
Gr Elev (ft) 7,743.00	Casing Flange Elevation (ft)	KB-Ground Distance (ft) 0.00	KB-Casing Flange Distance (ft)	Spud Date 3/5/2007 18:30	Rig Release Date 3/10/2007 22:00



Wellbore									
Wellbore Name			Profile Type				Vertical Section Direction (°)		
Section Des		Size (in)		Act Top (ftKB)			Act Btm (ftKB)		
Kick Offs & Key Depths									
Type		Top Depth (ftKB)				Depth Top (TVD) (ftKB)			
Wellhead									
Type									
Des		Make		Model		SN		WP Top (psi)	
Last Mud Check									
Date	Type	Depth (ftKB)	Dens (lb/gal)	Vis (s/qt)	Gel 10s (lb/100ft²)	Gel 10m (lb/100ft²)	PV (cP)	YP (lb/100ft²)	
Casing									
Casing Description Conductor				Run Date 3/6/2007 00:45		Set Depth (ftKB) 49.0		Wellbore Original Hole	
Centralizers 1 - 13-3/8 x 17-1/2 Latch-on bow				Scratchers					
Jts	Item Des	OD (in)	ID (in)	Wt (lb/ft)	Grade	Len (ft)	Top (ftKB)	Btm (ftKB)	
	Collar BGL					3.00	0.0	3.0	
1	Casing Joints	13 3/8	12.62	54.50	J-55	45.15	3.0	48.1	
	Guide Shoe	13 3/8	12.62	54.50	J-55	0.81	48.1	49.0	
Casing Description Surface				Run Date 3/6/2007 18:30		Set Depth (ftKB) 499.1		Wellbore Original Hole	
Centralizers 5 - 8-5/8" x 11" Latch-on bow				Scratchers 2 - Turbos					
Jts	Item Des	OD (in)	ID (in)	Wt (lb/ft)	Grade	Len (ft)	Top (ftKB)	Btm (ftKB)	
	Collar BGL					2.50	0.0	2.5	
10	Casing Joints	8 5/8	8.10	24.00	J-55	450.40	2.5	452.9	
	Insert float valve	8 5/8	8.10	24.00	J-55	0.00	452.9	452.9	
1	Casing Joints	8 5/8	8.10	24.00	J-55	45.25	452.9	498.1	
	Guide Shoe	8 5/8	8.10	24.00	J-55	1.00	498.1	499.1	
Casing Description Production				Run Date 3/10/2007 09:30		Set Depth (ftKB) 2,197.0		Wellbore Original Hole	
Centralizers 12 - 5-1/2" x 7-7/8" Latch-on-bow				Scratchers 2 - Turbos & 4 - Cement baskets					
Jts	Item Des	OD (in)	ID (in)	Wt (lb/ft)	Grade	Len (ft)	Top (ftKB)	Btm (ftKB)	
1	Collar AGL					-4.33	0.0	-4.3	
34	Casing Joints	5 1/2	4.95	15.50	J-55	1,489.08	-4.3	1,484.8	
1	Casing Pup Joint	5 1/2	4.95	15.50	J-55	6.60	1,484.8	1,491.4	
1	Stage Collar	5 1/2	4.95	15.50	J-55	2.15	1,491.4	1,493.5	
1	External Casing Packer	5 1/2	4.87	15.50	J-55	6.90	1,493.5	1,500.4	
15	Casing Joints	5 1/2	4.95	15.50	J-55	650.91	1,500.4	2,151.3	
1	Float Collar	5 1/2	0.00	15.50	J-55	1.15	2,151.3	2,152.5	
1	Casing Joints	5 1/2	0.00	15.50	J-55	43.39	2,152.5	2,195.9	
1	Float Shoe	5 1/2	0.00	15.50	J-55	1.15	2,195.9	2,197.0	
Cement: <Description?>									
Cementing Start Date		Cementing End Date			Wellbore				
Evaluation Method		Cement Evaluation Results							
Comment									
Cement Stage: <Description?>									
Top Depth (ftKB)		Bottom Depth (ftKB)		Full Return?	Vol Cement	Top Plug?		Bottom Plug?	
Initial Pump Rate (bbl/min)		Final Pump Rate (bbl/min)		Avg Pump Rate (bbl/min)		Final Pump Pressure (psi)		Plug Bump Pressure (psi)	
Pipe Reciprocated?		Stroke (ft)		Reciprocation Rate (spm)		Pipe Rotated?		Pipe RPM (rpm)	
Tagged Depth (ftKB)		Tag Method		Depth Plug Drilled Out To (ft)		Drill Out Diameter (in)		Drill Out Date	

Well Name: Apache Canyon 31-12

Conductor

API/UWI 05071091200000	Location T33S-R67W-S31	Field Name Purgatoire River	Permit Number 20065353	State/Province Colorado	Well Configuration Type Vertical
Gr Elev (ft) 7,743.00	Casing Flange Elevation (ft)	KB-Ground Distance (ft) 0.00	KB-Casing Flange Distance (ft)	Spud Date 3/5/2007 18:30	Rig Release Date 3/10/2007 22:00

[illegible]

Cement Fluid: <Description?>				
Fluid Type	Fluid Description		Amount (sack/Class)	Volume Pumped (bbl)
Estimated Top (ftKB)	Est Btm (ftKB)	Yield (ft³/sack)	Mix H2O Ratio (gal/sack)	Free Water (%)
Density (lb/gal)	Plastic Viscosity (cP)		Thickening Time (hr)	1st Compressive Strength (psi)
Cement Fluid Additives				
Add	Type		Conc	