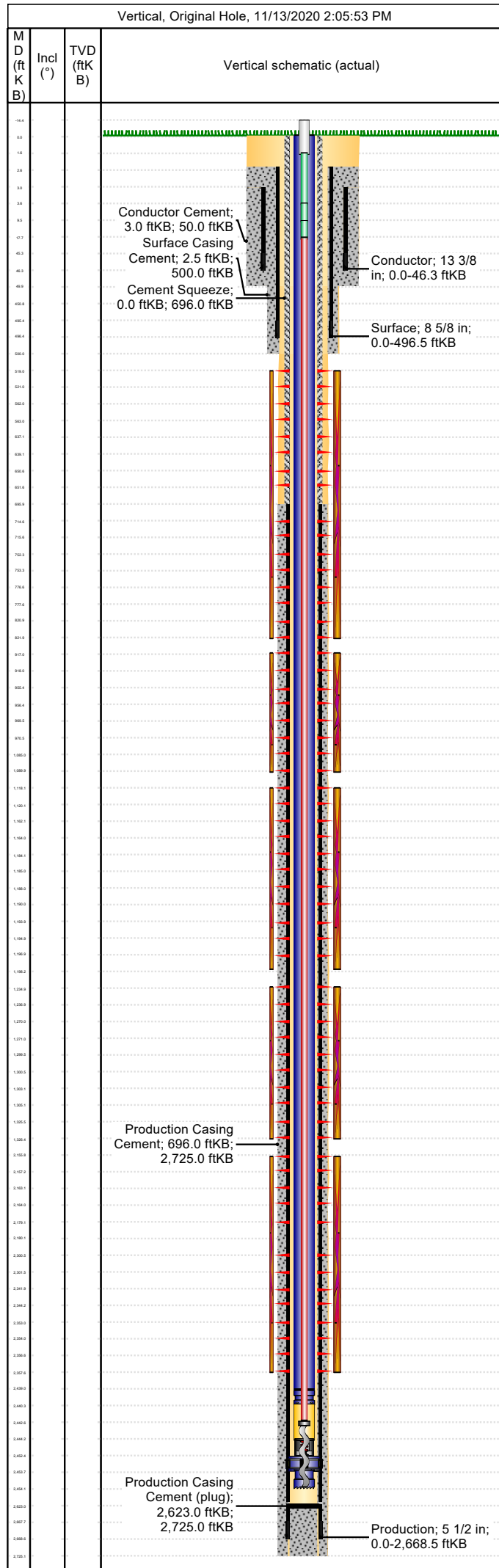


Well Name: Apache Canyon 29-04

Conductor

API/UWI 05071092810000	Location T34S-R67W-S29	Field Name Purgatoire River	Permit Number 20071779	State/Province Colorado	Well Configuration Type Vertical
Gr Elev (ft) 8,130.00	Casing Flange Elevation (ft)	KB-Ground Distance (ft) 0.00	KB-Casing Flange Distance (ft)	Spud Date 8/14/2007 06:00	Rig Release Date 8/17/2007 00:30



Wellbore									
Wellbore Name				Profile Type			Vertical Section Direction (°)		
Section Des		Size (in)		Act Top (ftKB)			Act Btm (ftKB)		
Kick Offs & Key Depths									
Type		Top Depth (ftKB)				Depth Top (TVD) (ftKB)			
Wellhead									
Type									
Des		Make		Model		SN		WP Top (psi)	
Last Mud Check									
Date	Type	Depth (ftKB)	Dens (lb/gal)	Vis (s/qt)	Gel 10s (lb/100ft²)	Gel 10m (lb/100ft²)	PV (cP)	YP (lb/100ft²)	
Casing									
Casing Description Conductor				Run Date 8/14/2007 09:00		Set Depth (ftKB) 46.3		Wellbore Original Hole	
Centralizers 1 - 13-3/8" x 17-1/2"				Scratchers					
Jts	Item Des	OD (in)	ID (in)	Wt (lb/ft)	Grade	Len (ft)	Top (ftKB)	Btm (ftKB)	
1	Collar BGL					3.00	0.0	3.0	
1	Casing Joints	13 3/8	12.62	54.50	J-55	42.30	3.0	45.3	
1	Guide Shoe	13 3/8	12.62	54.50	J-55	1.00	45.3	46.3	
Casing Description Surface				Run Date 8/15/2007 12:00		Set Depth (ftKB) 496.5		Wellbore Original Hole	
Centralizers 4 - 8-5/8" x 11"				Scratchers 2 - Turbos					
Jts	Item Des	OD (in)	ID (in)	Wt (lb/ft)	Grade	Len (ft)	Top (ftKB)	Btm (ftKB)	
1	Collar BGL					2.50	0.0	2.5	
10	Casing Joints	8 5/8	8.10	24.00	J-55	448.30	2.5	450.8	
1	Insert float valve	8 5/8	8.10	24.00	J-55	0.00	450.8	450.8	
1	Casing Joints	8 5/8	8.10	24.00	J-55	44.70	450.8	495.5	
1	Guide Shoe	8 5/8	8.10	44.70	J-55	1.00	495.5	496.5	
Casing Description Production				Run Date 8/17/2007 06:56		Set Depth (ftKB) 2,668.5		Wellbore Original Hole	
Centralizers 19 - 5-1/2" x 7-7/8"				Scratchers 2 - Turbos & 4 - Cement baskets					
Jts	Item Des	OD (in)	ID (in)	Wt (lb/ft)	Grade	Len (ft)	Top (ftKB)	Btm (ftKB)	
1	Collar AGL					0.00	0.0	0.0	
59	Casing Joints	5 1/2	4.95	15.50	J-55	2,623.14	0.0	2,623.1	
1	Insert float valve	5 1/2	4.95	15.50	J-55	0.00	2,623.1	2,623.1	
1	Casing Joints	5 1/2	4.95	15.50	J-55	44.50	2,623.1	2,667.6	
1	Float Shoe	5 1/2	4.95	15.50	J-55	0.90	2,667.6	2,668.5	
Cement: <Description?>									
Cementing Start Date		Cementing End Date			Wellbore				
Evaluation Method		Cement Evaluation Results							
Comment									
Cement Stage: <Description?>									
Top Depth (ftKB)		Bottom Depth (ftKB)		Full Return?		Vol Cement R		Top Plug?	
Initial Pump Rate (bbl/min)		Final Pump Rate (bbl/min)		Avg Pump Rate (bbl/min)		Final Pump Pressure (psi)		Plug Bump Pressure (psi)	
Pipe Reciprocated?		Stroke (ft)		Reciprocation Rate (spm)		Pipe Rotated?		Pipe RPM (rpm)	
Tagged Depth (ftKB)		Tag Method		Depth Plug Drilled Out To (ft)		Drill Out Diameter (in)		Drill Out Date	

Well Name: Apache Canyon 29-04

Conductor

API/UWI 05071092810000	Location T34S-R67W-S29	Field Name Purgatoire River	Permit Number 20071779	State/Province Colorado	Well Configuration Type Vertical
Gr Elev (ft) 8,130.00	Casing Flange Elevation (ft)	KB-Ground Distance (ft) 0.00	KB-Casing Flange Distance (ft)	Spud Date 8/14/2007 06:00	Rig Release Date 8/17/2007 00:30

