

Inspection Photos

Location Name: TEP ROCKY MOUNTAIN LLC UNION ENERGY MINING DIV.-66S96W /33SWSE,
Location ID: 334868



Photo #4323 from entrance to location.



Photo #4324 from entrance to location.



Inspection Photos

Location Name: TEP ROCKY MOUNTAIN LLC UNION ENERGY MINING DIV.-66S96W /33SWSE,
Location ID: 334868



Photo #4325 No battery sign located at the tank battery.



Photo #4328 Unmarked deadman.

Inspection Photos

Location Name: TEP ROCKY MOUNTAIN LLC UNION ENERGY MINING DIV.-66S96W /33SWSE,
Location ID: 334868



Photo #4326 Location lacks stabilization.



Photo #4327 Access road lacks stabilization.

Inspection Photos

Location Name: TEP ROCKY MOUNTAIN LLC UNION ENERGY MINING DIV.-66S96W /33SWSE,
Location ID: 334868



Photo #4329 Sediment trap insufficient.



Photo #4331 Gully erosion occurring downstream of sediment trap.

Inspection Photos

Location Name: TEP ROCKY MOUNTAIN LLC UNION ENERGY MINING DIV.-66S96W /33SWSE,
Location ID: 334868



Photo #4333 Velocity checks insufficient.



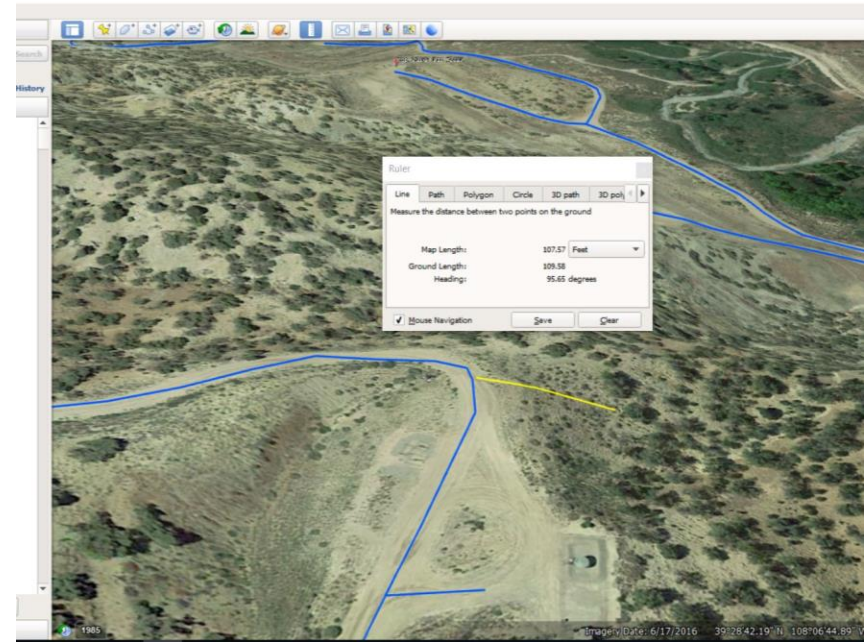
Photo #4334 Gully erosion continued. Velocity checks insufficient.

Inspection Photos

Location Name: TEP ROCKY MOUNTAIN LLC UNION ENERGY MINING DIV.-66S96W /33SWSE,
Location ID: 334868



Photo #4335 Gully erosion continues into tree line.

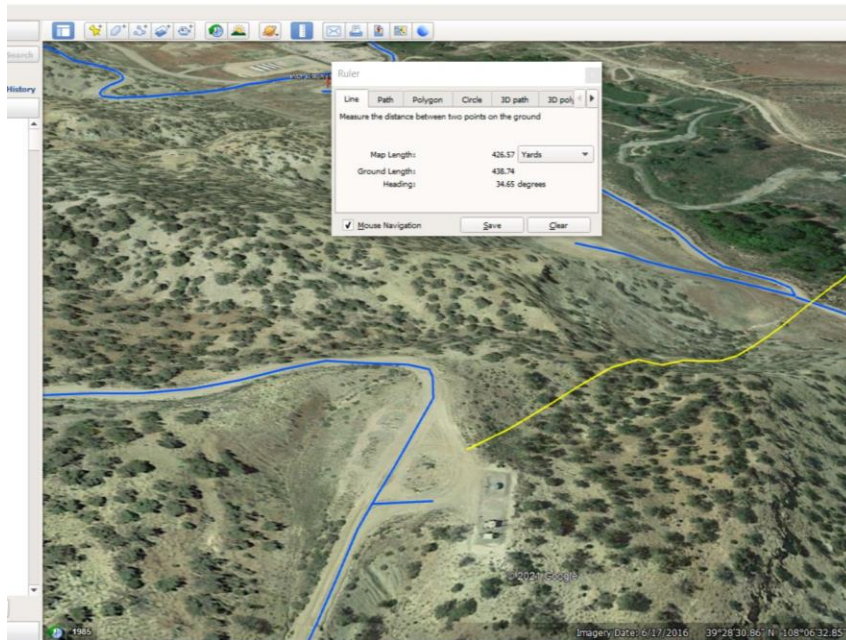


Gully erosion down cut slope for approximately 100 ft.



Inspection Photos

Location Name: TEP ROCKY MOUNTAIN LLC UNION ENERGY MINING DIV.-66S96W /33SWSE,
Location ID: 334868



Location is approximately 440 yards form Parachute creek
with a 300 ft. elevation change.