

Inspection Photos

Location Name: TEP ROCKY MOUNTAIN LLC UNOCAL-66S96W /33SESE

Location ID: 334849



Photo #4302 from entrance to location.



Photo #4303 from entrance to location.

Inspection Photos

Location Name: TEP ROCKY MOUNTAIN LLC UNOCAL-66S96W /33SESE

Location ID: 334849



Photo #4304 Wellhead sign weathered and not legible.



Photo #4308 No battery sign located at the tank battery.



Inspection Photos

Location Name: TEP ROCKY MOUNTAIN LLC UNOCAL-66S96W /33SESE

Location ID: 334849

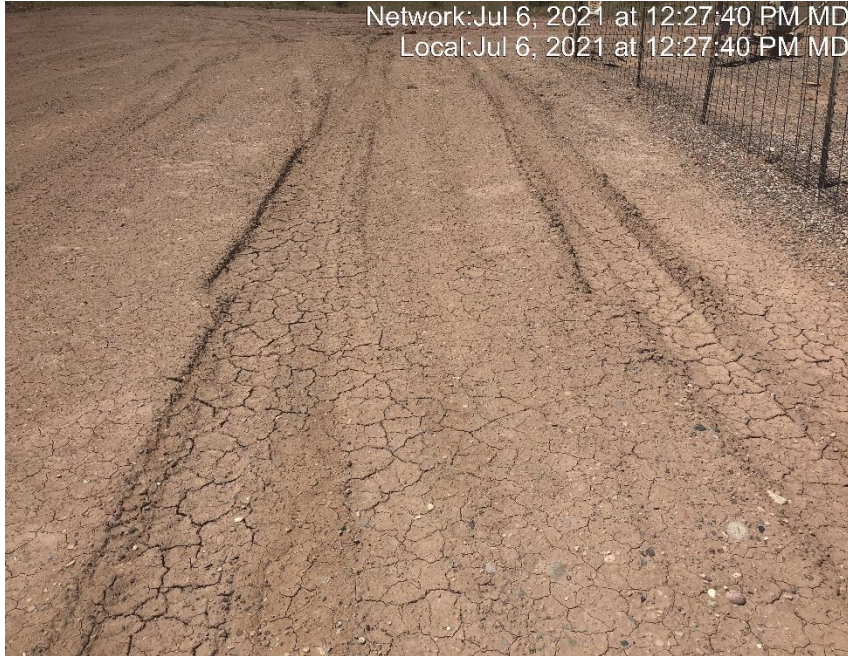


Photo #4305 Location lacks stabilization.



Photo #4306 Location lacks stabilization.

Inspection Photos

Location Name: TEP ROCKY MOUNTAIN LLC UNOCAL-66S96W /33SESE

Location ID: 334849



Photo #4307 No form of tracking BMP located at entrance to location.



Photo #4309 No form of velocity check located in access road ditches.

Inspection Photos

Location Name: TEP ROCKY MOUNTAIN LLC UNOCAL-66S96W /33SESE

Location ID: 334849



Photo #4310 Rill erosion occurring in access road ditch.



Photo #4311 Rill erosion occurring in access road ditch.

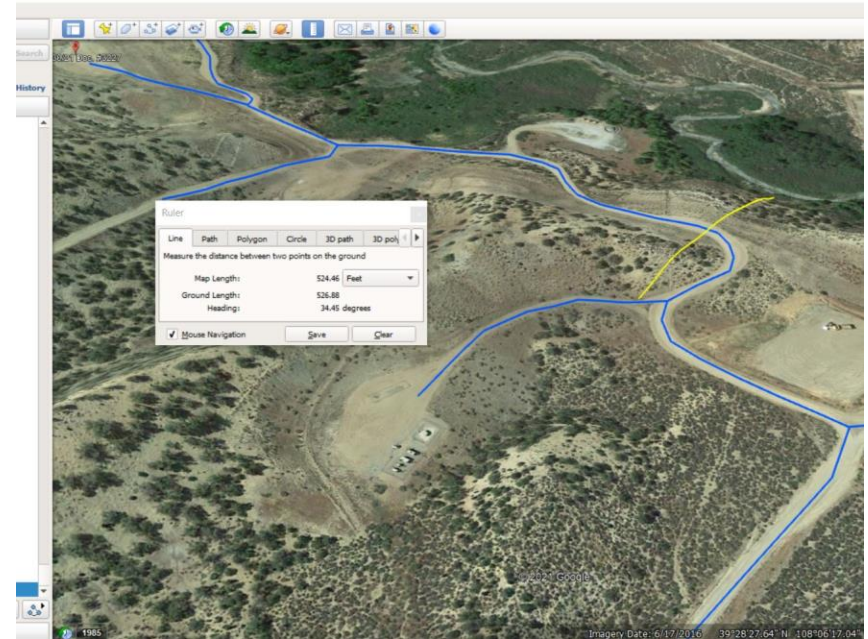
Inspection Photos

Location Name: TEP ROCKY MOUNTAIN LLC UNOCAL-66S96W /33SESE

Location ID: 334849



Photo #4312 Sediment accumulation at entrance to access road.



Access road is located approximately 525 feet from Parachute creek.



COLORADO
Oil & Gas Conservation
Commission
Department of Natural Resources