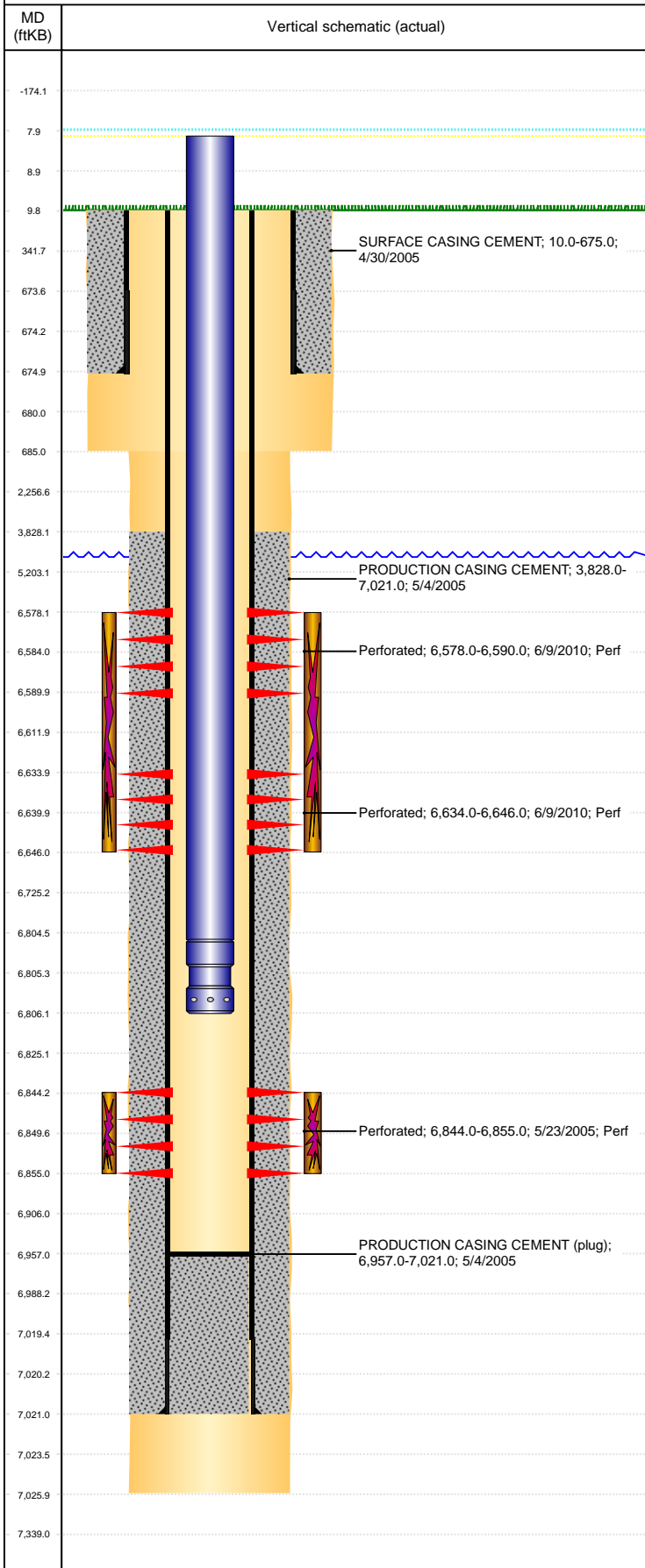


**Well Name: DONOVAN D02-19**

VERTICAL, ORIGINAL HOLE, 6/21/2021 1:09:53 PM



Well Header									
API 05-123-22926		Business Unit DJ BASIN		District 15		Well Config VERTICAL			
KB - GL / MSL (ft... 10.00		Spud Date 4/29/2005		P & A Date		Well Production Status PR		SoRT No	
Comment									
Surface Location (Congressional)									
Qtr 3 NW	Qtr 4 NW	Section 2	Twonshp 3	Twonsh... N	Range 64	Rng E/... W	Actual Latitude (°) 40.25835825	Actual Longitude (°) -104.52332790	
Wellbore Sections									
Section Des			Size (in)			Act Top, MD (ftKB)		Act Btm, MD (ftKB)	
SURFACE			12 1/4			10		685	
PRODUCTION			7 7/8			685		7,026	
Casing Strings									
Csg Des			Run Date		OD (in)	Wt/Len (lb/ft)	Grade	Top, MD (ftKB)	MD (ftKB)
Surface Casing			4/30/2005		8 5/8	24.00	J-55	10.0	675.0
Production			5/4/2005		4 1/2	11.60	M-80	10.0	7,021.0
Cement									
Des					Start Date		Top (ftKB)		Btm (ftKB)
SURFACE CASING CEMENT					4/30/2005		10.0		675.0
PRODUCTION CASING CEMENT					5/4/2005		3,828.0		7,021.0
Zone Statuses									
Zone Name		Status Date		Status	Fluid Type	Job			Prod Method
CODELL		7/3/2005		PR		DRILLING - ORIGINAL, 4/29/2005 00:00			
NIOBRARA		6/10/2010		PR		RE-FRAC & RECOMPLETE, 5/25/2010 14:30			
Perforation Data									
Linked Zone			Bnch/Stg	Entered Shot Total	Top (ftKB)		Btm (ftKB)		Date
NIOBRARA, ORIGINAL HOLE			A	24	6,578.00		6,590.00		6/9/2010
NIOBRARA, ORIGINAL HOLE			B	24	6,634.00		6,646.00		6/9/2010
CODELL, ORIGINAL HOLE				44	6,844.00		6,855.00		5/23/2005
Stimulation Intervals									
Zone					Start Date		Top (ftKB)		Btm (ftKB)
NIOBRARA, ORIGINAL HOLE					6/9/2010		6,578.0		6,646.0
CODELL, ORIGINAL HOLE					6/30/2005		6,844.0		6,855.0
CODELL, ORIGINAL HOLE					6/9/2010		6,844.0		6,855.0
Other In Hole									
Run Date		Des			Make		OD (in)	Top (ftKB)	Btm (ftKB)
Logs									
Date		Type					Top, MD (ftKB)		Btm, MD (ftKB)
5/3/2005		COMPENSATED DENSITY/NEUTRON					3,950.0		7,006.0
5/3/2005		INDUCTION					675.0		7,026.0
5/23/2005		CBL/CCL/GR					3,700.0		6,956.0
8/12/2020		GYRO					100.0		6,800.0
Plug Back Total Depths									
Date		Type		Com					Depth (ftKB)
5/26/2010		GUIDE SHOE		GUIDE SHOE					6,957.0
10/20/2010		PLUG REMNANTS		102' OF RAT HOLE					6,957.0