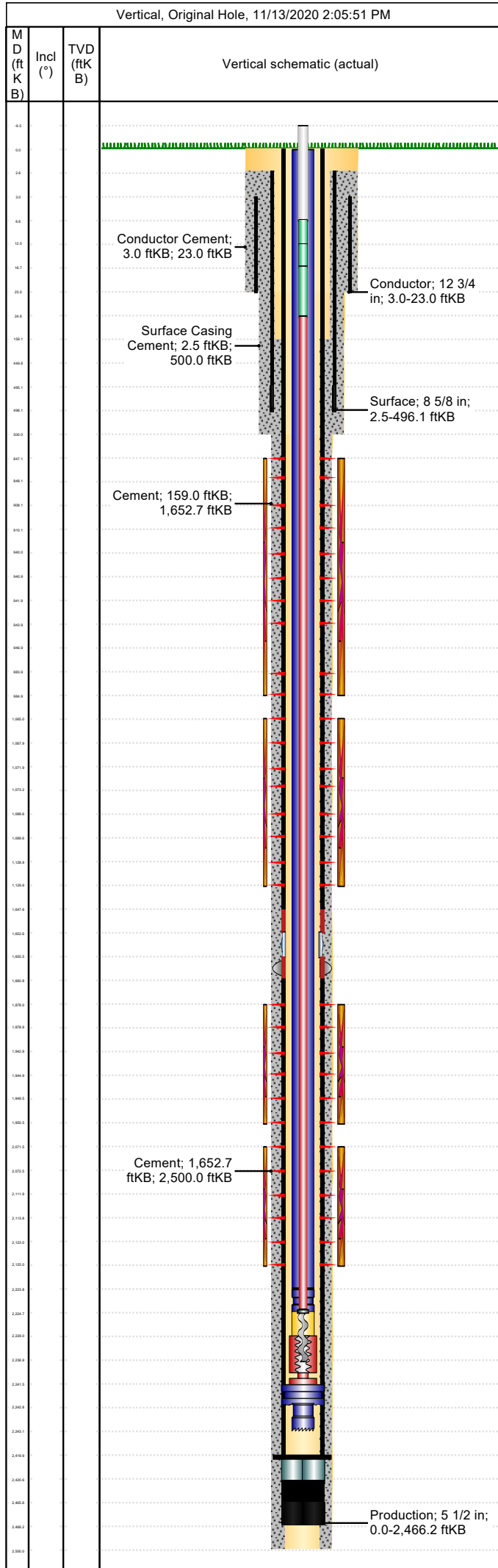


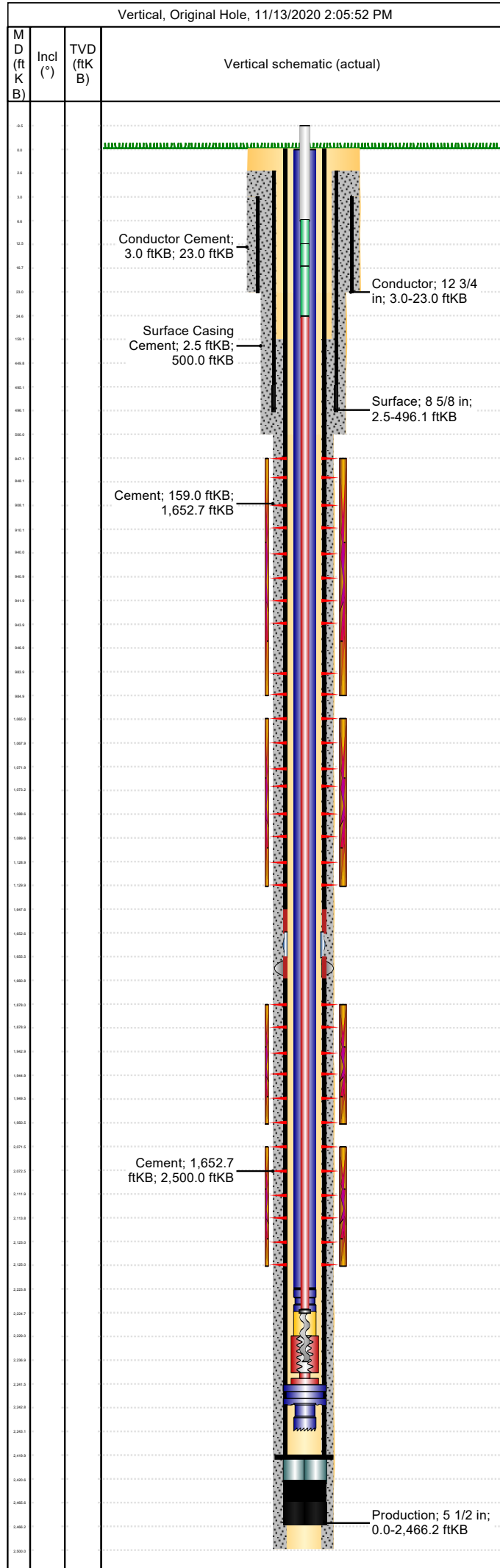
API/UWI 05071088880000	Location T34S-R67W-S19	Field Name Purgatoire River	Permit Number 20062623	State/Province Colorado	Well Configuration Type Vertical
Gr Elev (ft) 7,920.00	Casing Flange Elevation (ft)	KB-Ground Distance (ft) 0.00	KB-Casing Flange Distance (ft)	Spud Date 1/11/2007 14:00	Rig Release Date 1/14/2007 04:00



Wellbore									
Wellbore Name			Profile Type			Vertical Section Direction (°)			
Section Des		Size (in)		Act Top (ftKB)		Act Btm (ftKB)			
<b>Kick Offs &amp; Key Depths</b>									
Type		Top Depth (ftKB)			Depth Top (TVD) (ftKB)				
<b>Wellhead</b>									
Type									
Des		Make		Model		SN		WP Top (psi)	
<b>Last Mud Check</b>									
Date	Type	Depth (ftKB)	Dens (lb/gal)	Vis (s/qt)	Gel 10s (lb/100ft <sup>2</sup> )	Gel 10m (lb/100ft <sup>2</sup> )	PV (cP)	YP (lb/100ft <sup>2</sup> )	
<b>Casing</b>									
Casing Description Conductor			Run Date 1/11/2007 14:45		Set Depth (ftKB) 23.0		Wellbore Original Hole		
Centralizers					Scratchers				
Jts	Item Des	OD (in)	ID (in)	Wt (lb/ft)	Grade	Len (ft)	Top (ftKB)	Btm (ftKB)	
1	Casing Joints	12 3/4	12.50	35.00	L/S	20.00	3.0	23.0	
Casing Description Surface			Run Date 1/12/2007 14:45		Set Depth (ftKB) 496.1		Wellbore Original Hole		
Centralizers 5 - 8-5/8" x 11'					Scratchers 2 - 8-5/8" x 11" Turbos				
Jts	Item Des	OD (in)	ID (in)	Wt (lb/ft)	Grade	Len (ft)	Top (ftKB)	Btm (ftKB)	
0	Collar BGL	8 5/8				0.00	2.5	2.5	
10	Casing Joints	8 5/8	8.10	24.00	J-55	447.49	2.5	450.0	
1	Float Collar	8 5/8	8.10	24.00	J-55	0.00	450.0	450.0	
1	Casing Joints	8 5/8	8.10	24.00	J-55	45.14	450.0	495.1	
1	Guide Shoe	8 5/8	8.10	24.00	J-55	1.00	495.1	496.1	
Casing Description Production			Run Date 1/14/2007 03:45		Set Depth (ftKB) 2,466.2		Wellbore Original Hole		
Centralizers					Scratchers				
Jts	Item Des	OD (in)	ID (in)	Wt (lb/ft)	Grade	Len (ft)	Top (ftKB)	Btm (ftKB)	
37	Casing Joints	5 1/2	4.95	15.50	J-55	1,647.65	0.0	1,647.7	
1	Casing Pup Joint	5 1/2	4.95	15.50	J-55	5.00	1,647.7	1,652.7	
1	Stage Collar	5 1/2	4.95	15.50	J-55	3.00	1,652.7	1,655.7	
1	External Casing Packer	5 1/2	4.95	15.50	J-55	5.00	1,655.7	1,660.7	
17	Casing Joints	5 1/2	4.95	15.50	J-55	759.20	1,660.7	2,419.9	
1	Float Collar	5 1/2	0.00	15.50	J-55	0.75	2,419.9	2,420.6	
1	Casing Joints	5 1/2	0.00	15.50	J-55	44.80	2,420.6	2,465.4	
1	Float Shoe	5 1/2	0.00	15.50	J-55	0.75	2,465.4	2,466.2	
<b>Cement: &lt;Description?&gt;</b>									
Cementing Start Date			Cementing End Date			Wellbore			
Evaluation Method			Cement Evaluation Results						
Comment									
<b>Cement Stage: &lt;Description?&gt;</b>									
Top Depth (ftKB)		Bottom Depth (ftKB)		Full Return?	Vol Cement	Top Plug?		Bottom Plug?	
Initial Pump Rate (bbl/min)		Final Pump Rate (bbl/min)		Avg Pump Rate (bbl/min)		Final Pump Pressure (psi)		Plug Bump Pressure (psi)	
Pipe Reciprocated?		Stroke (ft)		Reciprocation Rate (spm)		Pipe Rotated?		Pipe RPM (rpm)	
Tagged Depth (ftKB)		Tag Method		Depth Plug Drilled Out To		Drill Out Diameter (in)		Drill Out Date	

Well Name: Apache Canyon 19-16

API/UWI 05071088880000	Location T34S-R67W-S19	Field Name Purgatoire River	Permit Number 20062623	State/Province Colorado	Well Configuration Type Vertical
Gr Elev (ft) 7,920.00	Casing Flange Elevation (ft)	KB-Ground Distance (ft) 0.00	KB-Casing Flange Distance (ft)	Spud Date 1/11/2007 14:00	Rig Release Date 1/14/2007 04:00



**Cement Fluid: <Description?>**

Fluid Type	Fluid Description	Amount (sack)	Class	Volume Pumped (bbl)
Estimated Top (ftKB)	Est Btm (ftKB)	Yield (ft³/sack)	Mix H2O Ratio (gal/sack)	Free Water (%)
Density (lb/gal)	Plastic Viscosity (cP)	Thickening Time (hr)	1st Compressive Strength (psi)	

**Cement Fluid Additives**

Add	Type	Conc